

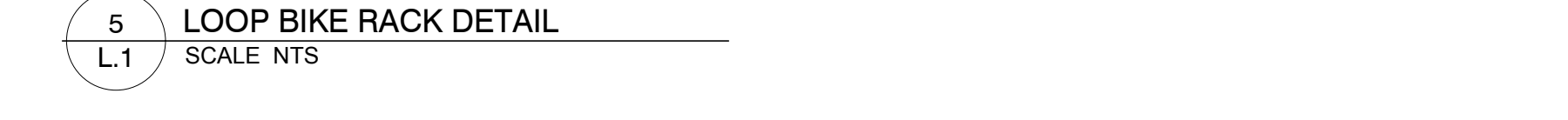
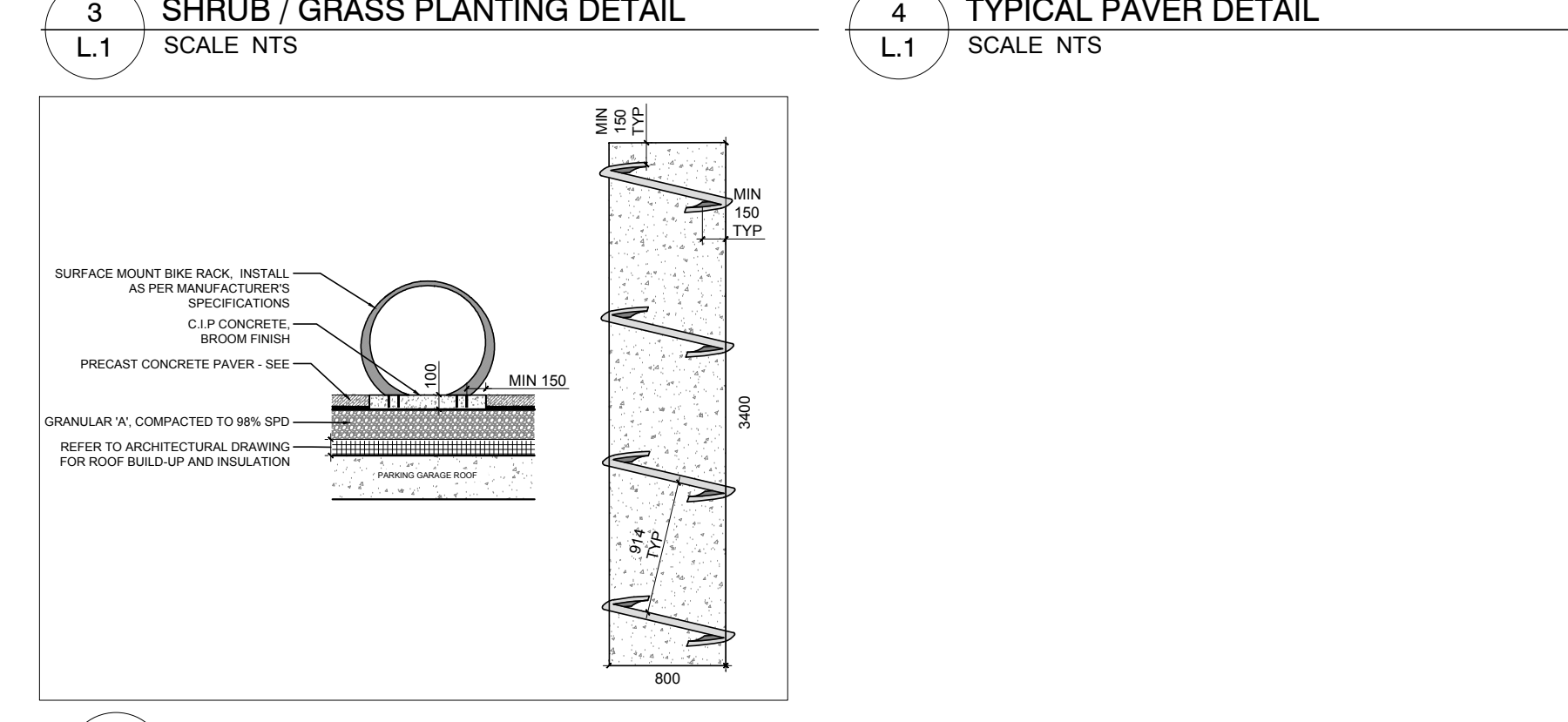
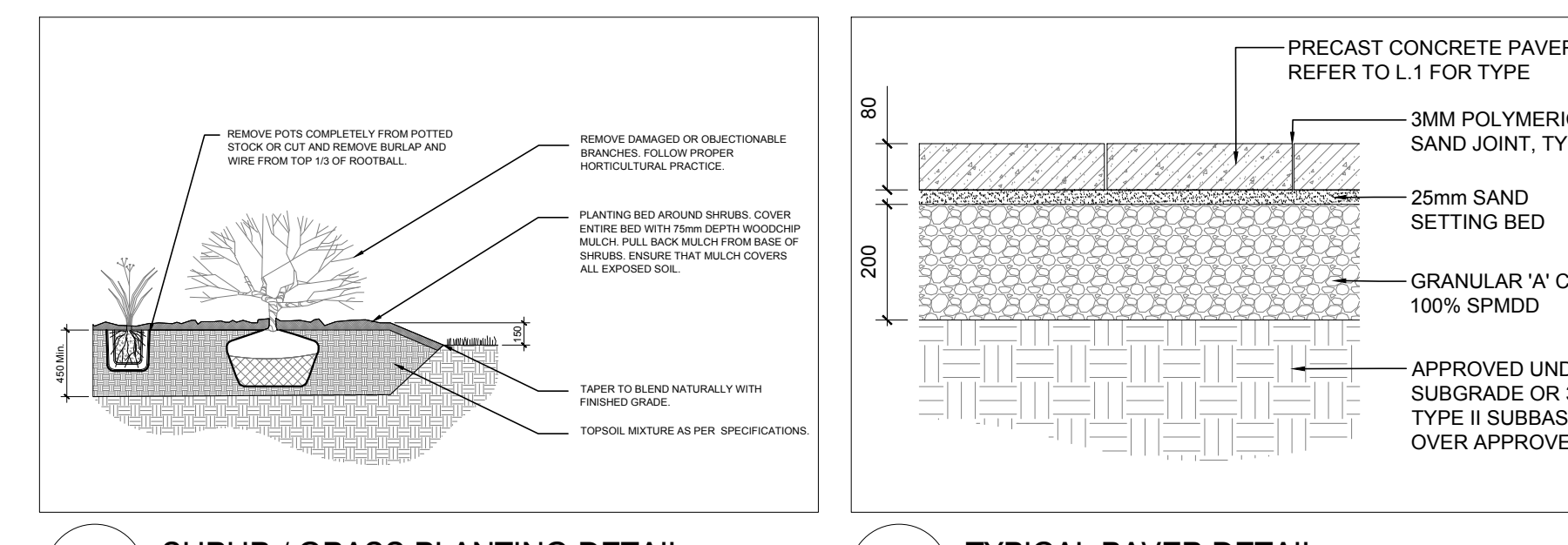
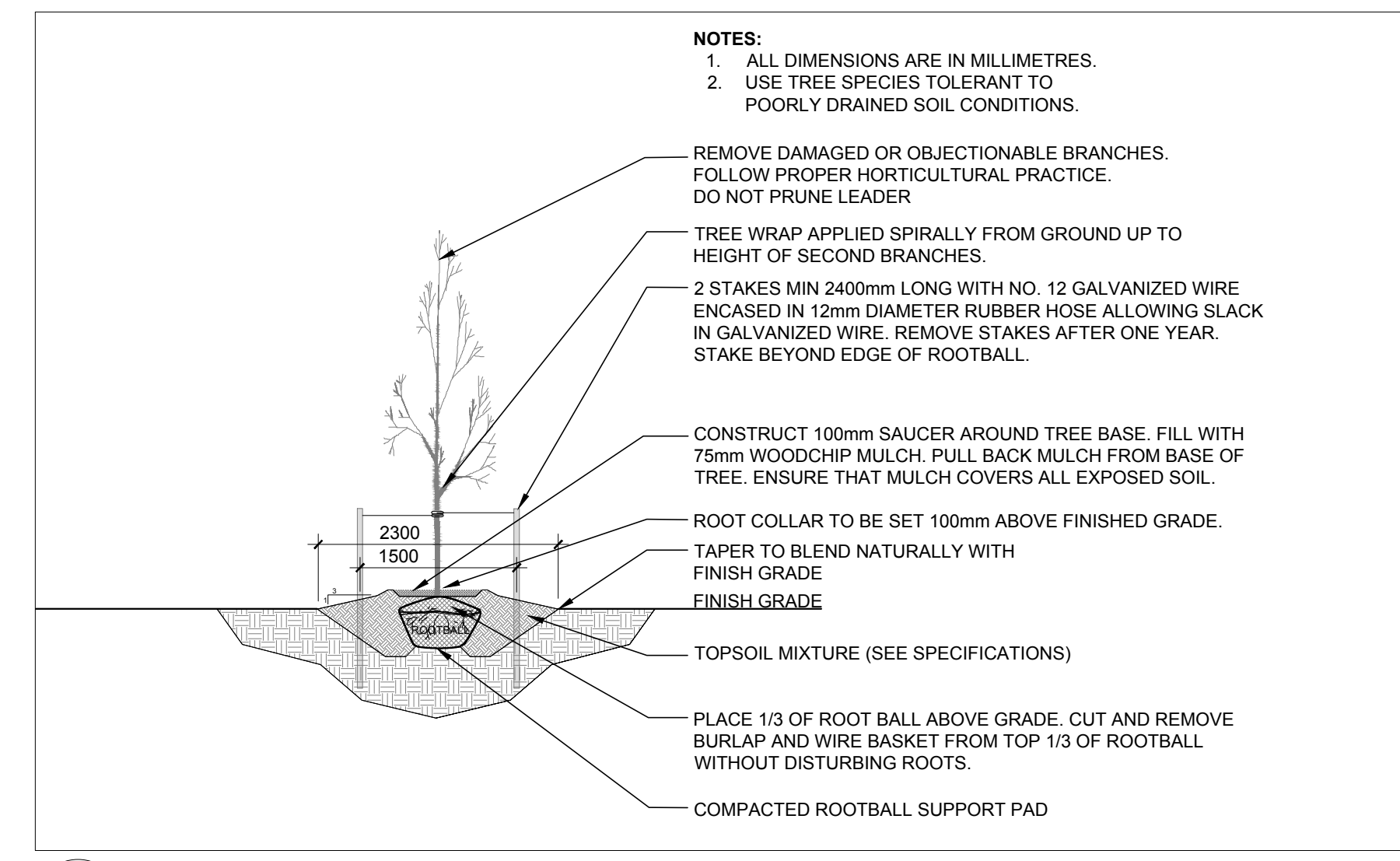
- GENERAL NOTES:**
- IT IS THE RESPONSIBILITY OF THE APPROPRIATE CONTRACTOR OR OFFICIAL TO REPORT ANY ERRORS, OMISSIONS OR DISCREPANCIES ON THIS PLAN WITH ACTUAL SITE CONDITIONS TO THE LANDSCAPE ARCHITECT BEFORE PROCEEDING WITH CONSTRUCTION.
 - THE CONTRACTOR IS TO NOTIFY ALL UTILITY COMPANIES AND AUTHORITIES PRIOR TO ANY EXCAVATION AND ASCERTAIN LOCATIONS OF UNDERGROUND SERVICES.
 - THE CONTRACTOR IS TO RENOVATE ALL AREAS AND ITEMS DAMAGED AS A RESULT OF CONSTRUCTION ACTIVITY.
 - THE CONTRACTOR IS TO COMPLY WITH ALL PERTINENT CODES AND BY-LAWS.
 - THE CONTRACTOR IS TO MAINTAIN A POSITIVE SURFACE RUNOFF THROUGHOUT THE ENTIRE CONSTRUCTION PERIOD.
 - THE LANDSCAPE ARCHITECT IS NOT RESPONSIBLE FOR SUBSURFACE CONDITIONS.
 - THE CONTRACTOR IS TO IDENTIFY ALL EXISTING TREES TO REMAIN ON SITE WITH THE LANDSCAPE ARCHITECT PRIOR TO CONSTRUCTION.
 - THE CONTRACTOR IS TO STAKE THE PROPOSED LOCATION OF ALL PLANT MATERIAL IN CONJUNCTION WITH THE LANDSCAPE ARCHITECT PRIOR TO EXCAVATION.
 - MINIMUM DISTANCES FOR SELECTED DECIDUOUS TREES ARE AS FOLLOWS:
 - 9.1. BUILDING FOUNDATIONS - 7.5M
 - 9.2. SIDEWALKS - 1.5M
 - 9.3. PUBLIC STREETS - 2.5M
 - 9.4. UNDERGROUND INFRASTRUCTURE - 2.0M
 - ALL TREES WITHIN 1M OF UNDERGROUND UTILITY TRENCHES ARE TO BE EXCAVATED BY HAND.
 - REMOVE ALL PROTECTIVE WRAPPINGS FROM TREE TRUNKS AFTER INSTALLATION.
 - STAKING OF TREES SHALL ONLY BE PERFORMED IF NECESSARY.
 - ENSURE THAT MULCH IS PULLED BACK A MINIMUM DISTANCE OF 750MM FROM BASE OF TREE TRUNK.

EXISTING TREE LIST

KEY	QTY	BOTANICAL NAME	COMMON NAME	SIZE	CONDITION	REMARKS	OWNERSHIP
GB	6	Spirea	Mainspring Tree	100-150mm DBH	Poor - Good	To Be Removed	PRIVATE
HL	6	Gleditsia triacanthos	Honey Locust	100-200mm DBH	Good	To Remain	PRIVATE
TC	2	Tilia cordata	Little-Leaf Linden	200mm DBH	Good	To Remain	PRIVATE

PROPOSED PLANT LIST

KEY	QTY	BOTANICAL NAME	COMMON NAME	SIZE	CONDITION	SPACING
SB	5	Amelanchier canadensis	Shadbolt Serviceberry	200mm HL	WB, B&B	1m



GENERAL NOTES / NOTES GÉNÉRALES

- These professional drawings are the intellectual property of JBL and shall not be copied or reproduced without written permission. For information, the drawings are prepared in accordance with the standards of the Institute of Landscape Architects of Ontario (ILOAO) and the standards of the International Association of Landscape Professionals (IALA).
- The drawings are prepared in accordance with the standards of the Institute of Landscape Architects of Ontario (ILOAO) and the standards of the International Association of Landscape Professionals (IALA).
- The drawings are prepared in accordance with the standards of the Institute of Landscape Architects of Ontario (ILOAO) and the standards of the International Association of Landscape Professionals (IALA).
- The drawings are prepared in accordance with the standards of the Institute of Landscape Architects of Ontario (ILOAO) and the standards of the International Association of Landscape Professionals (IALA).

Client/Architect:
Cieland Jardine Eng. Ltd.
100 Yorkville Ave., Toronto, ON M5R 1A5
416-922-1111

Structural Engineer / Ingénieur en Structure:
Michael E. Goodey
100 Yorkville Ave., Toronto, ON M5R 1A5
416-922-1111

Land Surveyor / arpenteur géomètre:
Annis O'Sullivan Vollebæk
100 Yorkville Ave., Toronto, ON M5R 1A5
416-922-1111

Landscape Architect / Architecture de Paysage:
James B. Lennox & Associates Inc.
1125 Carleton Ave., Ottawa, ON K1R 8A5
613-722-0166

Civil Engineer / Ingénieur en Génie Civil:
NEUP architect(e)s inc.
100 Yorkville Ave., Toronto, ON M5R 1A5
416-922-1111

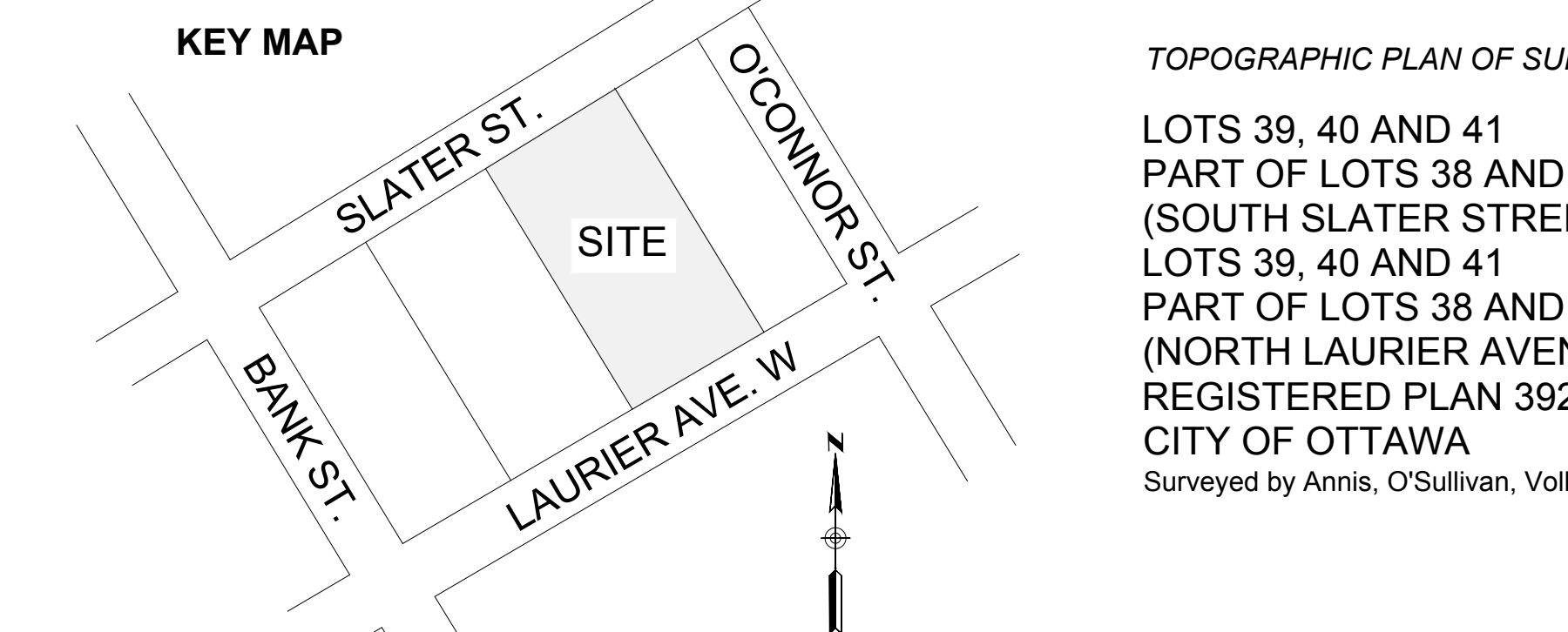
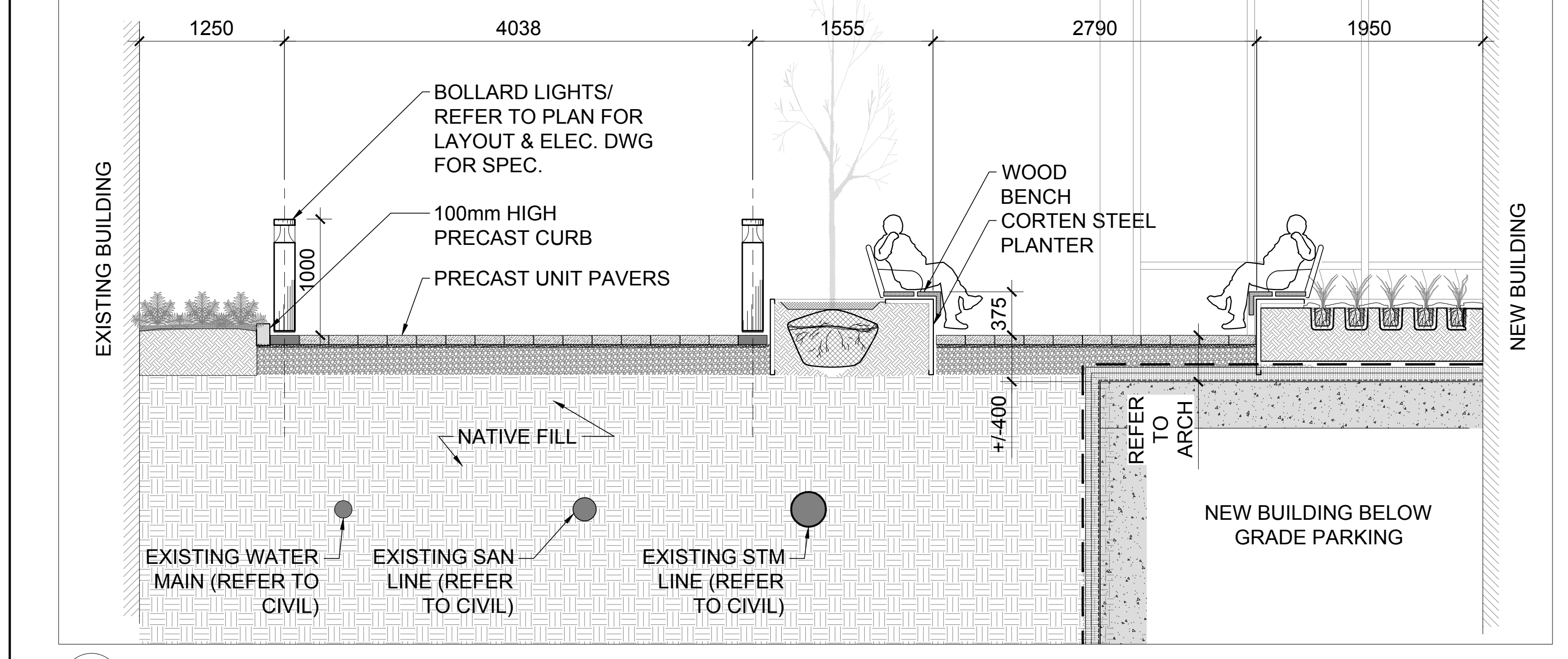
Architects / Architectes:
NEUP architect(e)s inc.
100 Yorkville Ave., Toronto, ON M5R 1A5
416-922-1111

- LEGEND**
- PRECAST CONCRETE PAVER TYPE 1
 - PRECAST CONCRETE PAVER TYPE 2
 - PRECAST CONCRETE PAVER TYPE 3 (ROOF)
 - PROPOSED LANDSCAPE AREA
 - ARTIFICIAL TURF
 - PROPOSED 100mm HIGH PRECAST CURBED LANDSCAPE AREA
 - PROPOSED RAISED CORTEN LANDSCAPE PLANTER
 - EXISTING TREE TO REMAIN
 - EXISTING TREE TO BE REMOVED
 - PROPOSED SHRUBS
 - PROPOSED BENCH
 - ILLUMINATED BOLLARD
 - TEMPORARY BIKE RACK
 - ORNAMENTAL LOOP STYLE BIKE RACK

APPROVED
By Andrew McCreight at 9:23 am, Jun 13, 2024

ANDREW MCCREIGHT
MANAGER, DEVELOPMENT REVIEW CENTRAL
PLANNING, DEVELOPMENT & BUILDING SERVICES
DEVELOPMENT DEPARTMENT, CITY OF OTTAWA

1 PHASE 1 - LANDSCAPE PLAN & TREE CONSERVATION REPORT
SCALE 1:150



CLIENT/CLIENT
GWL REALTY ADVISORS

PROJECT/PROJET
170 SLATER STREET

LOCATION/EMPLACEMENT
OTTAWA, ONTARIO

PROJECT NO./NO. PROJET
23MIS2337

NO. REVISION / RÉVISION **DATE (yy-mm-dd / aa-mm-jj)**

1	ISSUED FOR COORDINATION	23/06/23
2	ISSUED FOR COORDINATION	23/06/23
3	ISSUED FOR COORDINATION	23/06/23
4	ISSUED FOR COORDINATION	23/06/23
5	ISSUED FOR COORDINATION	23/06/23
6	ISSUED FOR COORDINATION	23/06/23
7	REVISED AS PER CITY COMMENTS	24/03/24
8	ISSUED FOR COORDINATION	24/03/24
9	REVISED AS PER COMMENTS	24/03/24
10	REVISED AS PER COMMENTS	24/03/24
11	ISSUED FOR COORDINATION	24/03/24
12	ISSUED FOR COORDINATION	24/03/24
13	ISSUED FOR COORDINATION	24/03/24
14	ISSUED FOR COORDINATION	24/03/24
15	ISSUED FOR COORDINATION	24/03/24

DRAWN BY / Dessiné Par **CHECKED BY / Vérifié Par**
SL JL

DATE / Date **SCALE / ÉCHELLE**
23.06.24 AS NOTED

DRAWING TITLE / TITRE DU DESSIN
LANDSCAPE PLAN & TREE CONSERVATION REPORT
PHASE 1 ONLY

REVISION / RÉVISION **DRAWING NO. / NO. DESSIN**