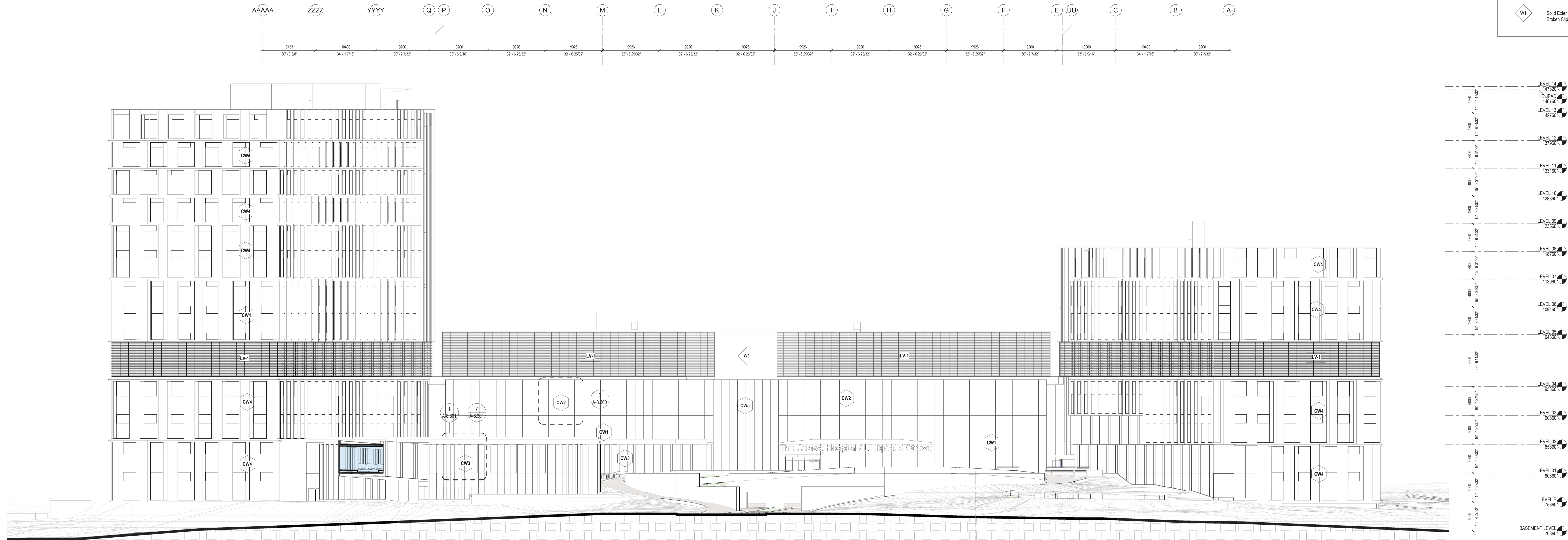


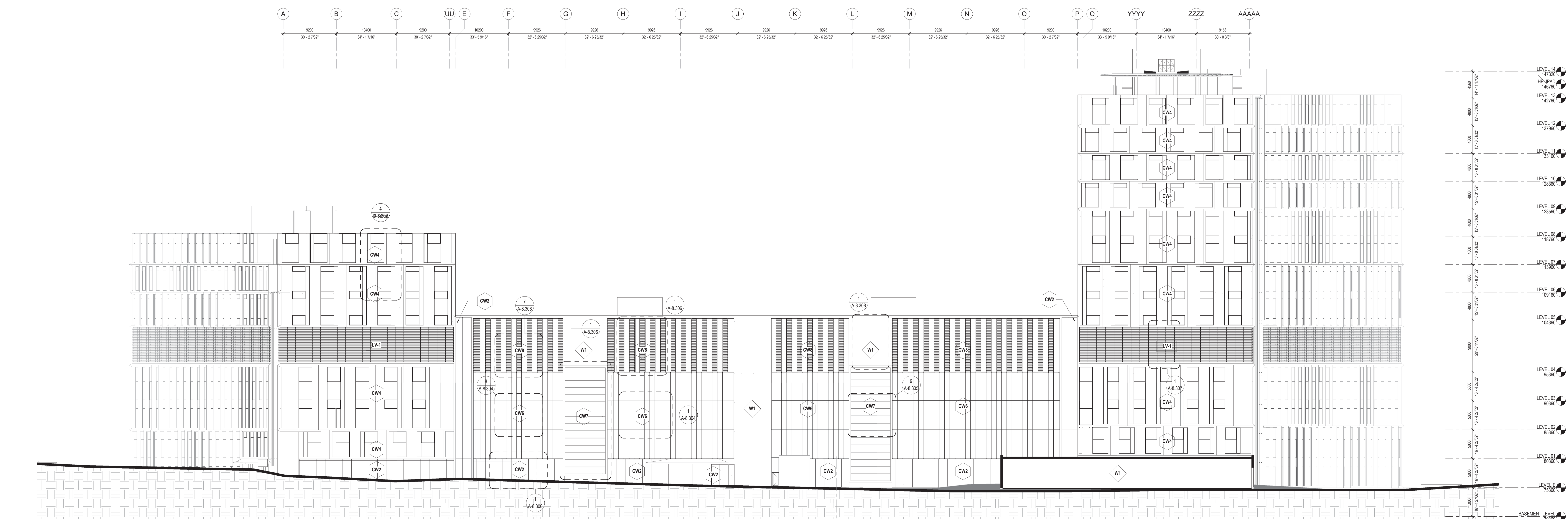
APPROVED
By Lily Xu at 10:12 am, May 21, 2024

LILY XU, MCI, P, RPP
MANAGER, DEVELOPMENT REVIEW SOUTH
PLANNING, DEVELOPMENT, AND BUILDING SERVICES
DEPARTMENT, CITY OF OTTAWA

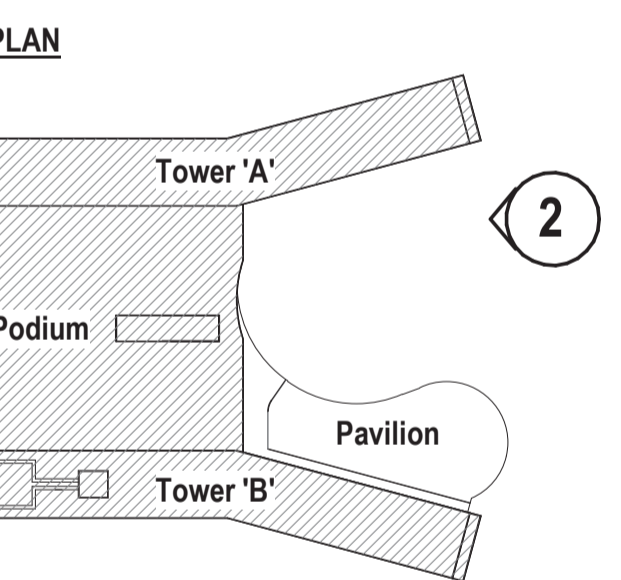
- CW1 4SSG Curtain Wall Casette Assembly - High Span Structural Steel Support
- CW2 4SSG Curtain Wall Assembly
- CW3 2SSG Curtain Wall Assembly w/ 100mm x 50mm Vertical Fin
- CW4 Utilized Wall Panel w/ Zero-Sightline Glazing, Spandrel Shadow Box and Formed Metal Panel Assembly
- CW5 2SSG Curtain Wall Casette Assembly w/ 150mm Fin - High Span Structural Steel Support
- CW6 Utilized Wall Panel w/ Zero-Sightline Glazing, Spandrel Shadow Box and Formed Metal Panel Assembly
- CW7 SSG Curtain Wall Assembly w/ Horizontal Solar Shade Louvers
- CW8 Utilized Wall Panel w/ LV-1 and Formed Metal Panel Assembly
- W1 Solid Exterior Rainscreen Assembly w/ Thermal Broken Clips



1 NORTH ELEVATION
1:250



2 SOUTH ELEVATION
1:250



Architect	HDR
Landscape Architect	HDR
Civil Engineer	Parsons
Structural Engineer	ESF
Mechanical Engineer	Smith + Anderson
Plumbing Engineer	Smith + Anderson
Interior Designer	HDR
Equipment Planner	Collins
Wayfinding	

Sheet Reviewer: Author

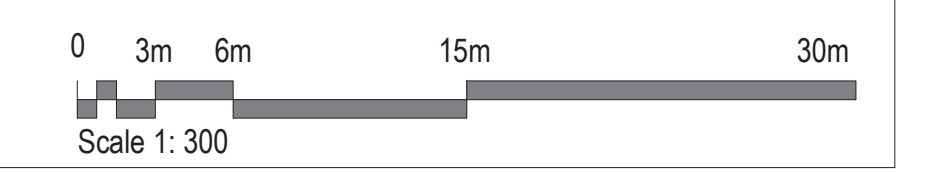
MARK	DATE	DESCRIPTION
1	2022-06-13	ISSUED FOR COSTING
2	2022-06-30	ISSUED FOR 3A1.1
3	2022-09-23	ISSUED FOR PRE-CONSULTATION
4	2022-11-30	ISSUED FOR SPC and FLUDA - 1st Submission
5	2022-12-02	ISSUED FOR 3A1.2
6	2023-04-14	ISSUED FOR SPC and FLUDA APPROVAL

Project Number: 10303962
Original Issue: 02/07/22



PRELIMINARY
NOT FOR CONSTRUCTION
Sheet Name
NORTH & SOUTH
ELEVATIONS

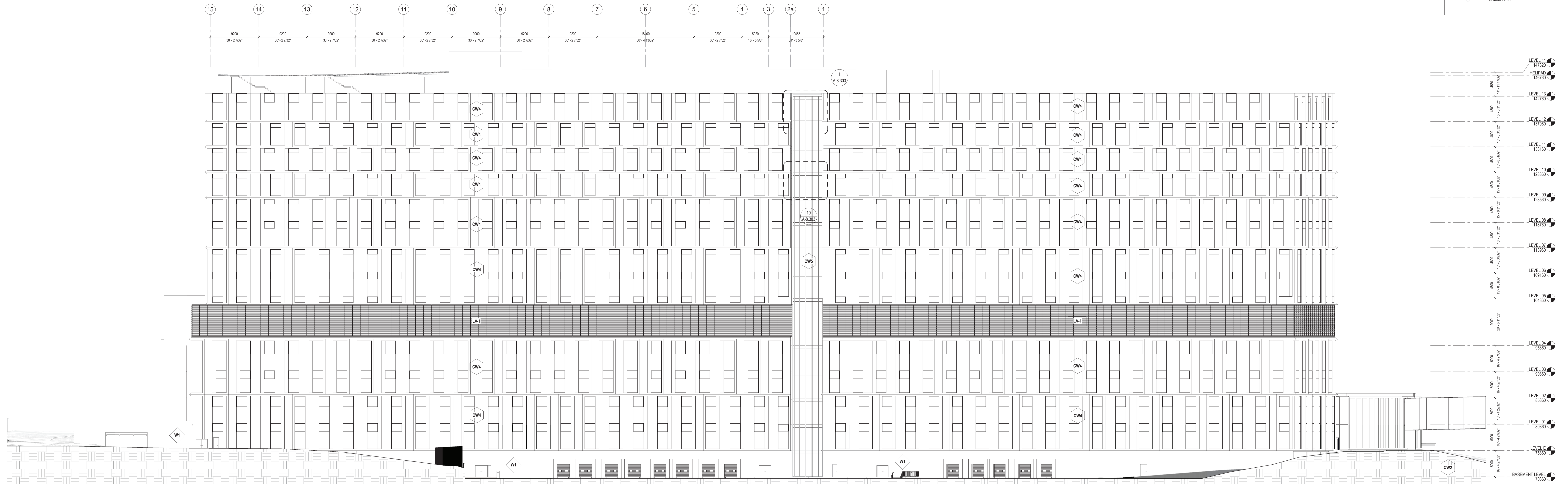
Sheet Number
A-8.100
Project Status
STAGE 3



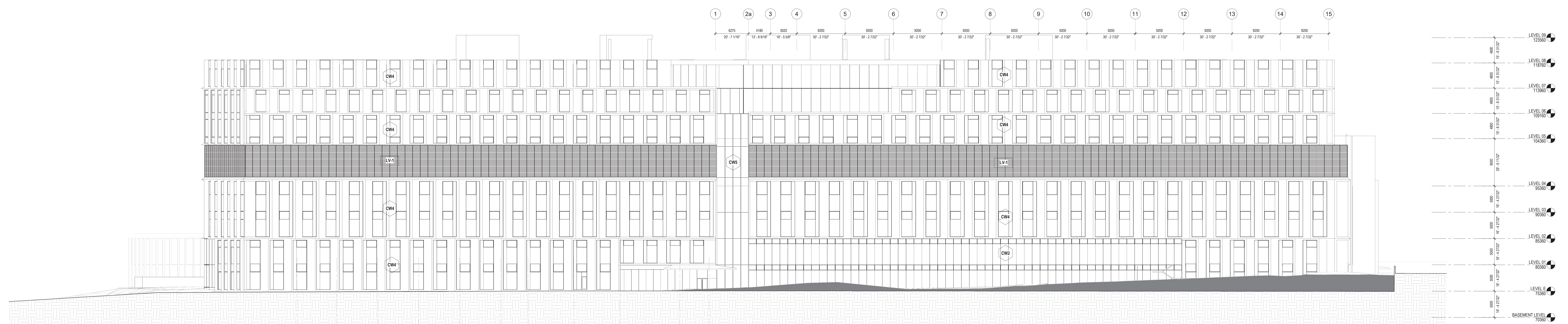
APPROVED
By Lily Xu at 10:06 am, May 21, 2024

LILY XU, MCIP, RPP
MANAGER, DEVELOPMENT REVIEW SOUTH
PLANNING, DEVELOPMENT, AND BUILDING SERVICES
DEPARTMENT, CITY OF OTTAWA

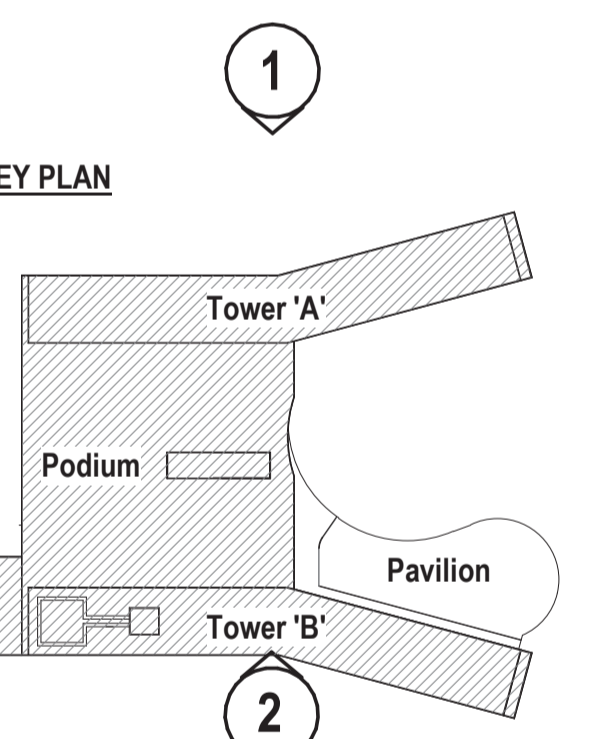
- 4SSG Curtain Wall Casette Assembly - High Span Structural Steel Support
- 4SSG Curtain Wall Assembly
- 2SSG Curtain Wall Assembly w/ 100mm x 510mm Vertical Fin
- Utilized Wall Panel w/ Zero-Sightline Clazing, Spandrel Shadow Box and Formed Metal Panel Assembly
- 2SSG Curtain Wall Casette Assembly w/ 150mm Fin - High Span Structural Steel Support
- Utilized Wall Panel w/ Zero-Sightline Clazing, Spandrel Shadow Box and Formed Metal Panel Assembly
- SSG Curtain Wall Assembly w/ Horizontal Solar Shade Louvers
- Utilized Wall Panel w/ LV-1 and Formed Metal Panel Assembly
- Solid Exterior Rainscreen Assembly w/ Thermal Broken Clips



1 EAST ELEVATION
1:250



2 WEST ELEVATION
1:250

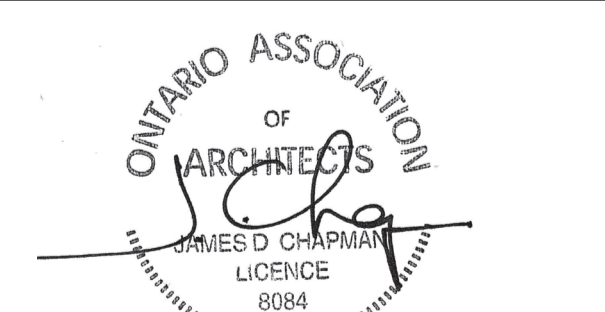


Architect	HDR
Landscape Architect	HDR
Civil Engineer	Parsons
Structural Engineer	ENR
Mechanical Engineer	Smith + Anderson
Electrical Engineer	Smith + Anderson
Plumbing Engineer	Smith + Anderson
Interior Designer	HDR
Equipment Planner	Collins
Wayfinding	

Sheet Reviewer: Author

MARK	DATE	DESCRIPTION
1	2022-06-13	ISSUED FOR COSTING
2	2022-06-30	ISSUED FOR 3A1-1
3	2022-09-23	ISSUED FOR PRE-CONSULTATION
4	2022-11-30	ISSUED FOR EPC and FLUDA - 1st Submission
5	2023-12-02	ISSUED FOR 3A1-2
6	2024-04-14	ISSUED FOR EPC and FLUDA APPROVAL

Project Number: 10303982
Original Issue: 02/01/22



PRELIMINARY
NOT FOR CONSTRUCTION
Sheet Name
EAST & WEST
ELEVATIONS

Sheet Number
A-8.101

Project Status
STAGE 3

