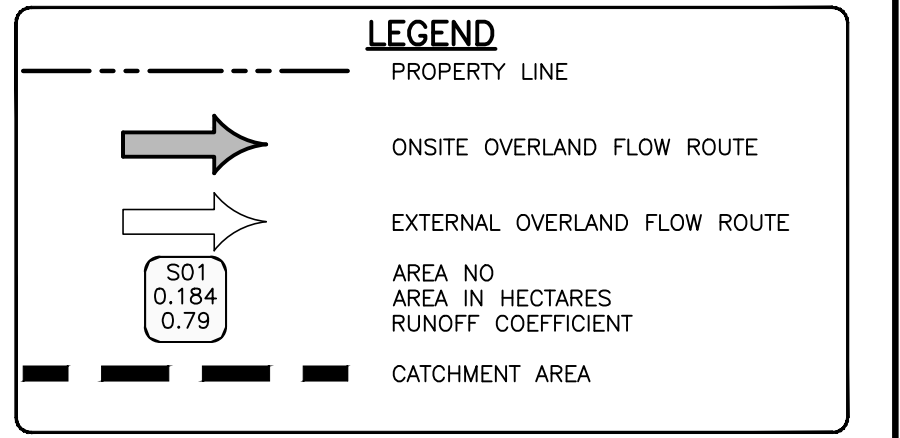
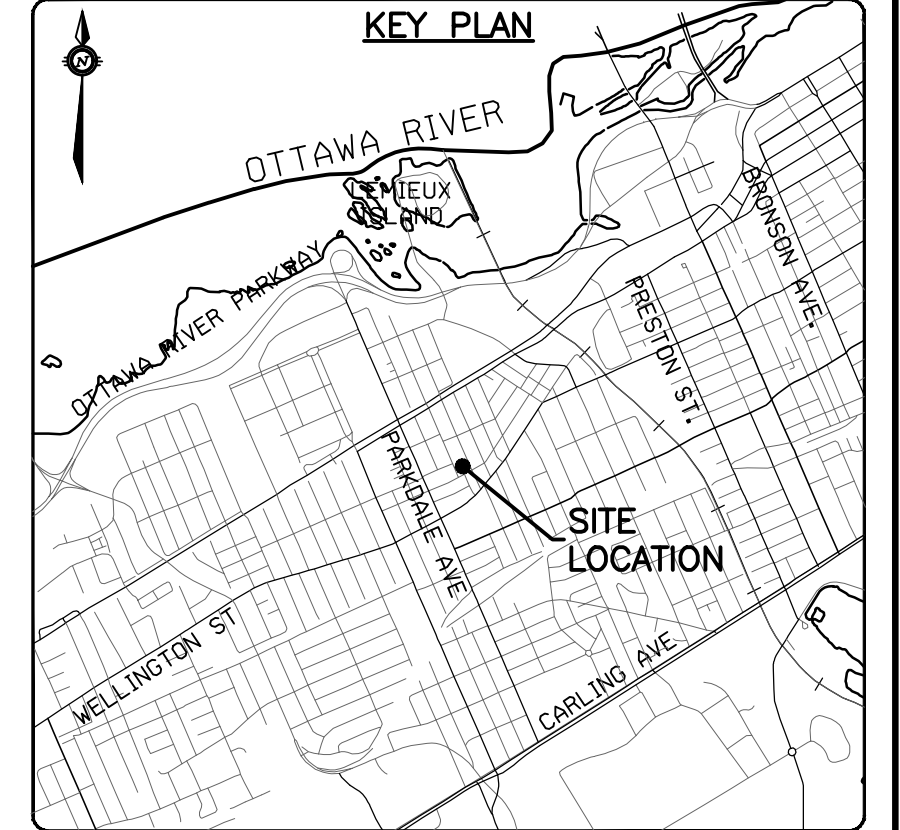
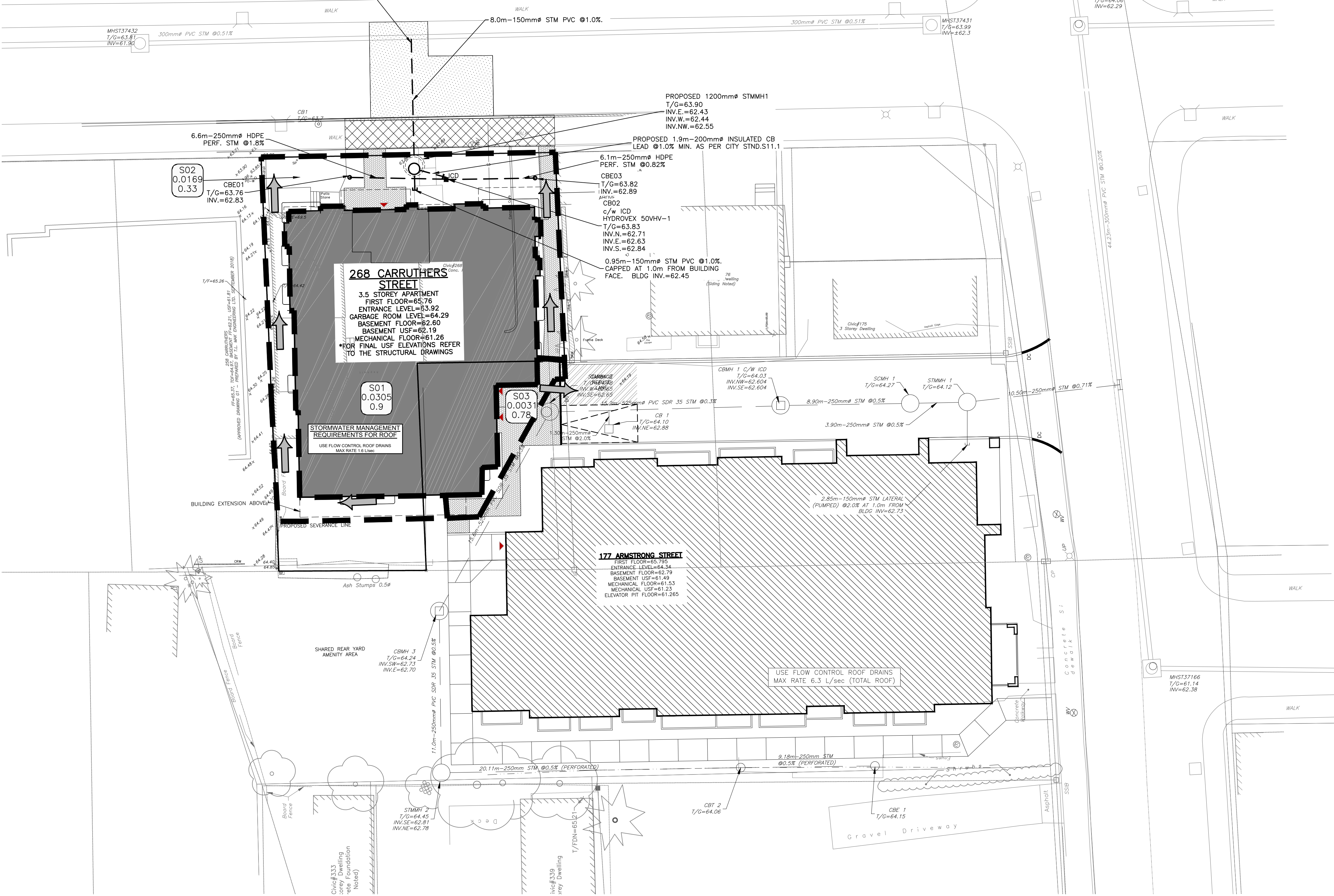


SERVICE CONNECTIONS TO CARRUTHERS AVE. CONNECT 150mm ϕ STORM SERVICE TO 300mm ϕ STORM SEWER (MAIN INV.=62.35). CONNECTION AS PER CITY STANDARD DWG. S11.1. (SANITARY AND STORM LATERALS TO BE INSULATED AS PER CITY STANDARD S35)



ICD SUMMARY TABLE				
Control Location	Max Flow (L/sec)	Max Head (m)	Type	Model
CB02	1.6	1.08	HYDROVEX	50VHV-1

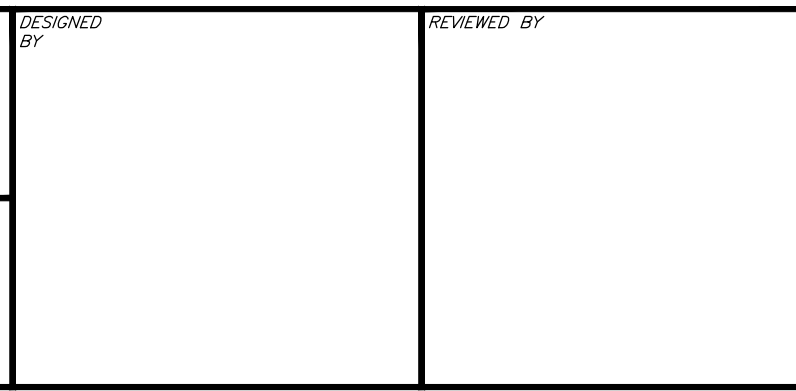
A. McCreight
ANDREW MCCREIGHT
 MANAGER, DEVELOPMENT REVIEW CENTRAL
 PLANNING, DEVELOPMENT & BUILDING SERVICES
 DEVELOPMENT DEPARTMENT, CITY OF OTTAWA

APPROVED
 By Andrew McCreight at 2:15 pm, Jun 06, 2024

CAUTION
 THE POSITION OF ALL POLE LINES, CONDUITS, WATERMANS, SEWERS AND OTHER UNDERGROUND AND OVERGROUND UTILITIES AND STRUCTURES IS NOT NECESSARILY SHOWN ON THE CONTRACT DRAWINGS, AND WHERE SHOWN, THE ACCURACY OF THE POSITION OF SUCH UTILITIES AND STRUCTURES IS NOT GUARANTEED. BEFORE STARTING WORK, DETERMINE THE EXACT LOCATION OF ALL SUCH UTILITIES AND STRUCTURES AND ASSUME ALL LIABILITY FOR DAMAGE TO THEM.

BENCHMARKING NOTES FOR SITE
 1. REFER TO LEGAL SURVEY PLAN PREPARED BY FARLEY, SMITH & DENIS SURVEYING INC. DATED APRIL 22, 2022.
 2. ELEVATIONS SHOWN ARE GEODETIC AND ARE REFERRED TO GEODETIC DATUM CGVD-1928 11978.
 3. ELEVATIONS DERIVED FROM MONUMENT NO. 0191969092 HAVING A PUBLISHED ELEVATION OF 84.092 METRES. LOCATION: ± 340 METRES NORTH OF COLONIALE ROAD, ± 15.3 METRES EAST OF THE EASTERLY FOG LINE ON PRINCE OF WALES DRIVE.
 4. IT IS THE RESPONSIBILITY OF THE USER OF THIS INFORMATION TO VERIFY THAT THE BENCHMARK HAS NOT BEEN ALTERED OR DISTURBED AND THAT ITS RELATIVE ELEVATION AND DESCRIPTION AGREES WITH THE INFORMATION SHOWN ON THIS DRAWING.

REV	REVISION DESCRIPTION	DATE	BY	APPD	REV	REVISION DESCRIPTION	DATE	BY	APPD
6	REVISED AS PER CITY COMMENTS	08/01/24	AC	BMT	7	RE-ISSUED FOR SITE PLAN APPROVAL	04/04/24	AKJ	BMT
5	ISSUED FOR SPC RESPONSE	15/12/23	AC	BMT					
4	REVISED AS PER NEW SITE PLAN	17/11/23	AKJ	BMT					
3	REVISED AS PER CITY COMMENTS	29/06/23	SAB	BMT					
2	REVISED AS PER CITY COMMENTS	21/03/23	SAB	BMT					
1	ISSUED FOR SITE PLAN APPROVAL	09/11/22	SAB	BMT					



DESIGNED BY: [Signature]
 REVIEWED BY: [Signature]
 DEVELOPER: **MCCORMICK PARK DEVELOPMENTS**
 1600 LAPERRIERE AVENUE, SUITE 205
 OTTAWA, ON. K1M 2H9
 613.421.1515
 exp Services Inc.
 1-1-877-668-1899 | 1-613-225-7330
 1025 Deseronto Drive, Unit 100
 Ottawa, ON K2B 8H6
 Canada
 www.exp.com
 BUILDINGS • EARTH & ENVIRONMENT • ENERGY • INDUSTRIAL • INFRASTRUCTURE • SUSTAINABILITY

PROJECT No.	PROJECT	DRAWING No.
OTT-22014656-AG	CARRUTHERS AVENUE DEVELOPMENT	C400
	266-268 CARRUTHERS OTTAWA, ONTARIO.	
	STORM DRAINAGE PLAN	