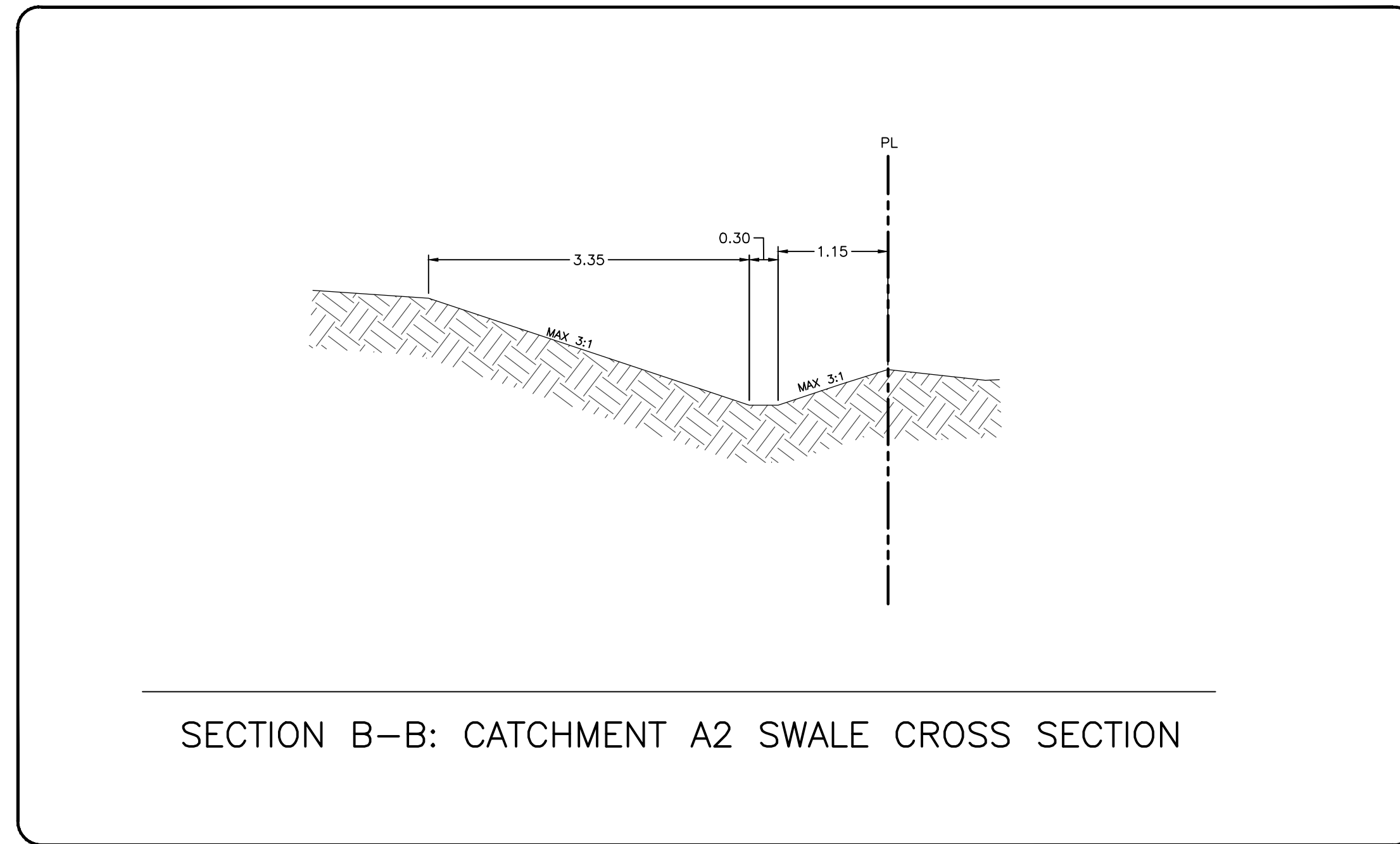
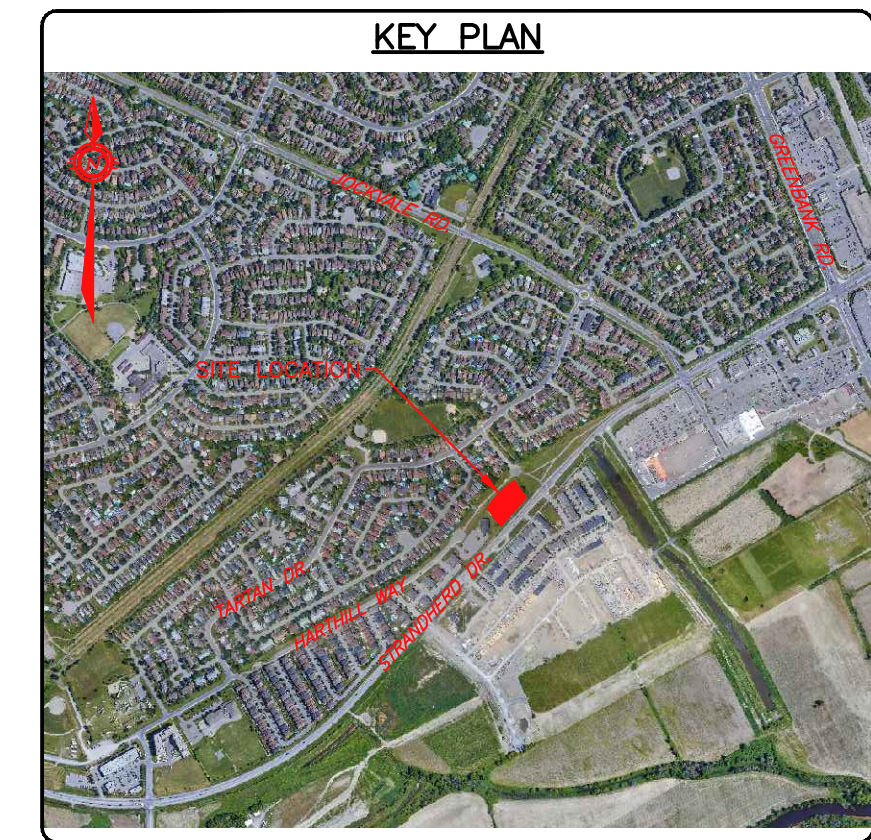


PRE-DEVELOPMENT STORM DRAINAGE CATCHMENTS

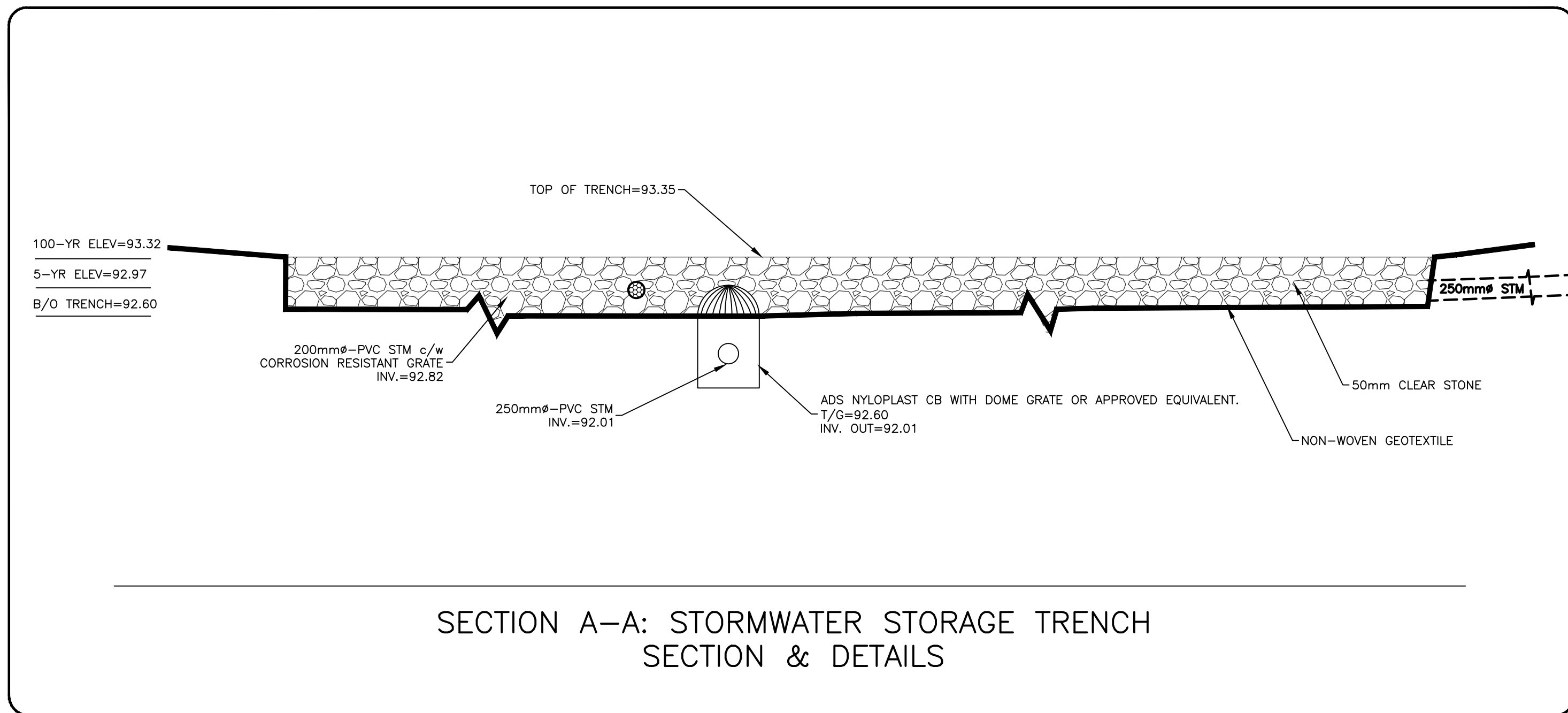


SECTION B-B: CATCHMENT A2 SWALE CROSS SECTION

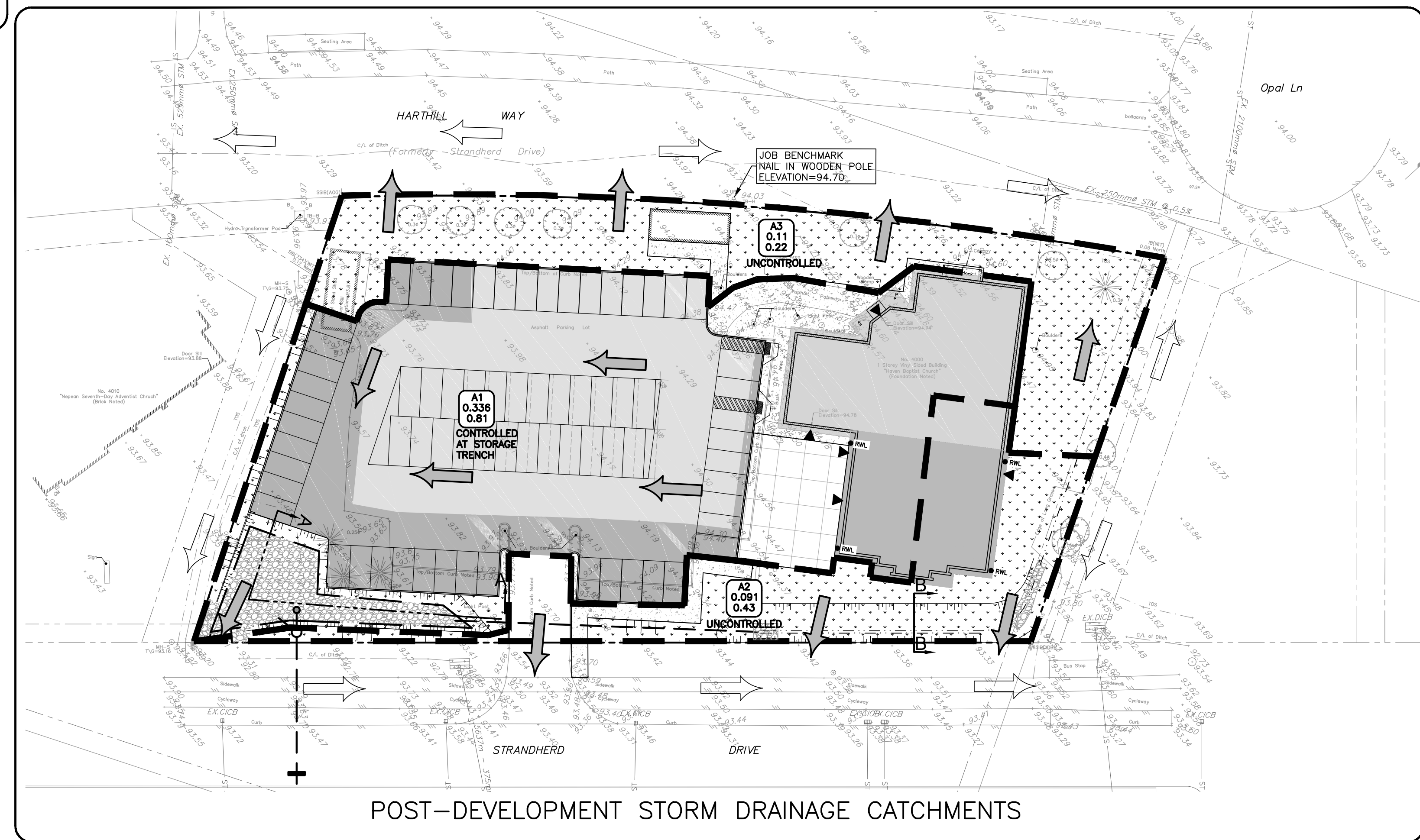


**LEGEND**

- PROPERTY LINE
- PRE-DEV ONSITE OVERLAND FLOW ROUTE
- PRE-DEV EXTERNAL OVERLAND FLOW ROUTE
- ⊡ PRE-DEV CATCHMENT INFO  
AREA NO  
AREA IN HECTARES  
RUNOFF COEFFICIENT
- PRE-DEV CATCHMENT AREA
- POST-DEV ONSITE OVERLAND FLOW ROUTE
- POST-DEV EXTERNAL OVERLAND FLOW ROUTE
- ⊡ POST-DEV CATCHMENT INFO  
AREA NO  
AREA IN HECTARES  
RUNOFF COEFFICIENT
- POST-DEV CATCHMENT AREA
- ▨ MAX. PONDING LIMIT



SECTION A-A: STORMWATER STORAGE TRENCH SECTION & DETAILS

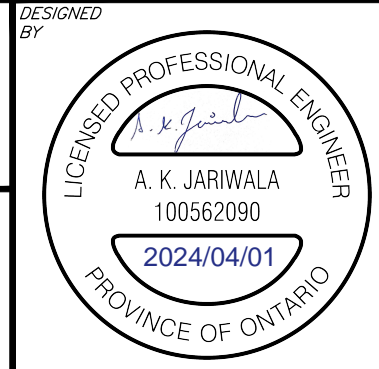
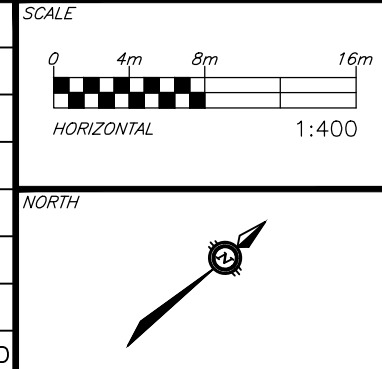


POST-DEVELOPMENT STORM DRAINAGE CATCHMENTS

**CAUTION**  
THE POSITION OF ALL POLE LINES, CONDUITS, WATERMANS, SEWERS AND OTHER UNDERGROUND AND OVERGROUND UTILITIES AND STRUCTURES IS NOT NECESSARILY SHOWN ON THE CONTRACT DRAWINGS, AND WHERE SHOWN, THE ACCURACY OF THE POSITION OF SUCH UTILITIES AND STRUCTURES IS NOT GUARANTEED. BEFORE STARTING WORK, DETERMINE THE EXACT LOCATION OF ALL SUCH UTILITIES AND STRUCTURES AND ASSUME ALL LIABILITY FOR DAMAGE TO THEM.

**NOT FOR CONSTRUCTION**

REV	REVISION DESCRIPTION	DATE	BY	APPD
3	RE-ISSUED FOR SPA	01/04/24	AJ	AJ
2	RE-ISSUED FOR SPA	11/01/24	AJ	AA
1	ISSUED FOR SPA	26/07/23	AJ	AA



CLIENT: HAVEN BAPTIST CHURCH  
4000 STRANDHERD DRIVE  
OTTAWA, ON. K2J 4R8

exp Services Inc.  
1-813-688-1899 | +1-613-225-7330  
2625 Casselman Drive, Unit 100  
Ottawa, ON K2B 8H6  
Canada  
www.exp.com

• BUILDINGS • EARTH & ENVIRONMENT • ENERGY •  
• INDUSTRIAL • INFRASTRUCTURE • SUSTAINABILITY •

BASE PLAN	AJ
DESIGN	AJ
CHECKED	AA
CAD	AJ
PROJECT MANAGER	AA
APPROVED	AA

PROJECT: HAVEN BAPTIST CHURCH  
4000 STRANDHERD Drive  
OTTAWA, ONTARIO.

TITLE: PRE-DEV AND POST-DEV  
STORM DRAINAGE AREA PLAN

PROJECT No. OTT-22029363-AD  
SURVEY BY: AJV  
SURVEY DATE: DEC 10, 2018  
DRAWING No. C400