

- DECIDUOUS TREES (SEE PLANTING NOTES & SCHEDULE FOR SPECIES AND QUANTITIES)
- CONIFEROUS TREES (SEE PLANTING SCHEDULE FOR SPECIES AND QUANTITIES)
- SHRUBS, PERENNIALS, GRASSES (SEE PLANTING SCHEDULE FOR SPECIES AND QUANTITIES)
- PLANT KEY
- EXISTING ASPHALT
- PROPOSED ASPHALT (SEE 5(L3))
- CONCRETE PAVING (SEE 7(L3))
- PRECAST CONCRETE PAVERS (SEE 6(L3) FOR DETAIL AND LAYOUT)
- SOD

rev'n	description / la description	yyyy/mm/dd
05	Re-Issued for SPA	2024-03-28
04	Re-Issued for SPA	2024-01-17
03	Re-Issued for SPA	2023-12-20
02	Re-Issued for SPA	2023-12-18
01	Issued for SPA	2023-08-10
00	Issued for coordination	2023/08/04

FOTENN Planning + Design
396 Cooper Street, Suite 300
Ottawa, ON, CANADA K2P 2H7
613.730.5709
fotenn.com

north / le nord stamp / le cachet

project / projet

4000 Strandherd Drive

drawing / dessin

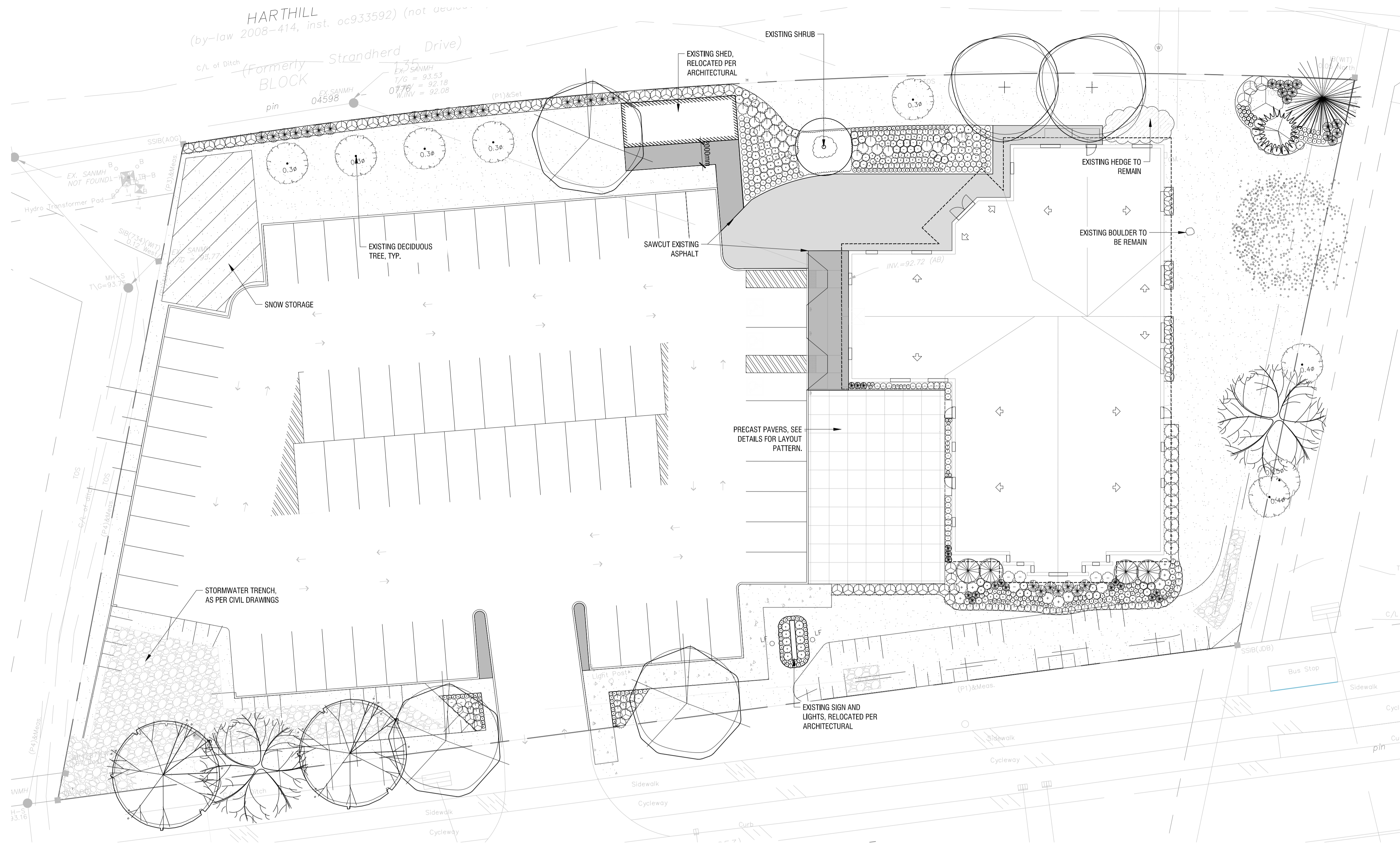
LANDSCAPE SITE PLAN

designed / conçu	drawn / dessiné	reviewed / examiné
SG	SG	OM
date		
JULY 2023		
project number / No. du projet		

drawing number / No. du dessin

L1 of 3

PRELIMINARY
NOT FOR CONSTRUCTION



1 LANDSCAPE SITE PLAN
L1 1:200

NOTES:

DO NOT SCALE DRAWINGS;

NOTES ARE APPLICABLE TO ALL DRAWINGS IN THE SET;

Fotenn Consultants Inc. IS NOT RESPONSIBLE FOR ACCURACY OF BASE INFORMATION;

REFER TO CIVIL ENGINEERING DRAWINGS FOR GRADING & SITE SERVICING INFORMATION;

THE CONTRACTOR IS RESPONSIBLE FOR CONFIRMING SITE CONDITIONS AND REPORTING ANY DISCREPANCIES TO THE LANDSCAPE ARCHITECT;

THE CONTRACTOR IS RESPONSIBLE FOR CONFIRMING EXACT LOCATIONS OF ALL UNDERGROUND SERVICES AND OBTAINING CLEARANCE FROM ALL APPLICABLE UTILITIES. PROPOSED WORKS FOUND TO BE IN CONFLICT WITH UNDERGROUND SERVICES MAY BE ADJUSTED AT THE DIRECTION OF THE LANDSCAPE ARCHITECT;

LANDSCAPE ELEMENTS SHOWN ARE SUBJECT TO THE FINAL LOCATION OF UNDERGROUND SERVICES AND UTILITIES;

DO NOT INSTALL TREES ON PROPERTY / LOT LINES OR WITHIN DRAINAGE EASEMENTS;

PERFORM WORK IN ACCORDANCE WITH DETAILS AND SPECIFICATIONS;

ALL PLANT MATERIAL SHALL BE No. 1 NURSERY STOCK AND SHALL MEET OR EXCEED THE SPECIFICATION OF THE Canadian Standards for Nursery Stock, AS PUBLISHED BY THE Canadian Nursery Landscape Association;

SPECIES SUBSTITUTIONS ARE NOT PERMITTED WITHOUT PRIOR WRITTEN APPROVAL OF THE LANDSCAPE ARCHITECT;

ALL UN-PAVED DISTURBED SURFACES TO RECEIVE 150mm DEPTH TOPSOIL & SOD.

THE CITY OF OTTAWA REQUIRES A Certificate of Completion (F1) Landscape Works TO BE SUBMITTED AND SEALED BY THE LANDSCAPE ARCHITECT. CONTRACTORS ARE RESPONSIBLE FOR FAMILIARIZING THEMSELVES WITH THE REQUIREMENTS OF THIS PROCESS AND PROVIDING SUFFICIENT NOTICE TO THE LANDSCAPE ARCHITECT TO CONDUCT SITE REVIEWS DURING INSTALLATION OF TREES. THE 1 YEAR WARRANTY PERIOD SHALL NOT COMMENCE UNTIL THE LANDSCAPE ARCHITECT HAS SUBMITTED THE F1 Certificate.

PRIOR TO INSTALLATION OF TREES, THE DEVELOPER WILL CONTACT THE PLANNING AND GROWTH MANAGEMENT AND FORESTRY SERVICES TO REVIEW THE SPECIES AND LOCATION OF TREES.

STANDARDS FOR TREE PLANTING:

NO PLANTING ON CORNERS OR ANYWHERE WHERE IT WOULD CREATE A SIGHT LINE CONCERN;

MAINTAIN A MINIMUM DISTANCE OF 2.5m FROM THE CURB FOR DECIDUOUS TREES AND 4.5m FOR CONIFEROUS TREES;

MAINTAIN A MINIMUM DISTANCE OF 1.5m FOR DECIDUOUS (4.5m FOR CONIFERS) FROM ANY SIDEWALK OR PRIVATE WALKWAY;

MAINTAIN A MINIMUM DISTANCE OF 1.2m FROM ALL DRIVEWAYS;

MAINTAIN A MINIMUM DISTANCE OF 2.5m FROM COMMUNITY MAILBOXES, LIGHT STANDARDS, FIRE HYDRANTS AND NO PLANTING IN FRONT OF HYDRANTS;

MAINTAIN A MINIMUM DISTANCE OF 3.0m FROM ALL HYDRO TRANSFORMERS;

MAINTAIN A MINIMUM DISTANCE OF 1.0m FROM ALL UNDERGROUND SERVICES;

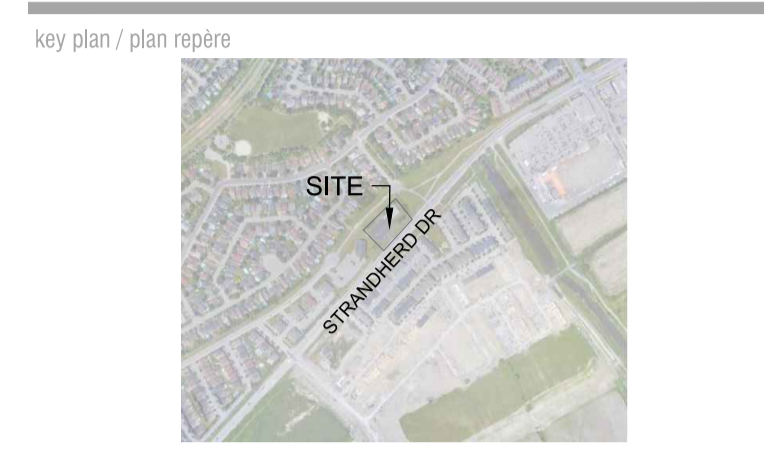
MAINTAIN A MINIMUM DISTANCE OF 1.0m FROM ALL BELL AND CABLE BOXES;

MAINTAIN A MINIMUM DISTANCE OF 10.0 FROM BUS SHELTERS

PLOT INFORMATION: DWG NAME: P:\PROJECTS\Spadola_Angelo\4000 Strandherd Drive_Landscape\SS1\SS1(LANDSCAPE)REVISED.DWG; Landscape\SS1\SS1(LANDSCAPE)REVISED.DWG; 4000 Strandherd Drive - LPA\A\Angelo; PLOT DATE: 2024-03-28 10:15:15 PM; SHEET SIZE: ISO (A4); SHEET NO.: 1; SHEET TOTAL: 3; PLOT DATE: 2024-03-28 10:15:15 PM; PLOTTED BY: Susan Carwood; LAST SAVED BY: gspadola

PRELIMINARY
NOT FOR CONSTRUCTION

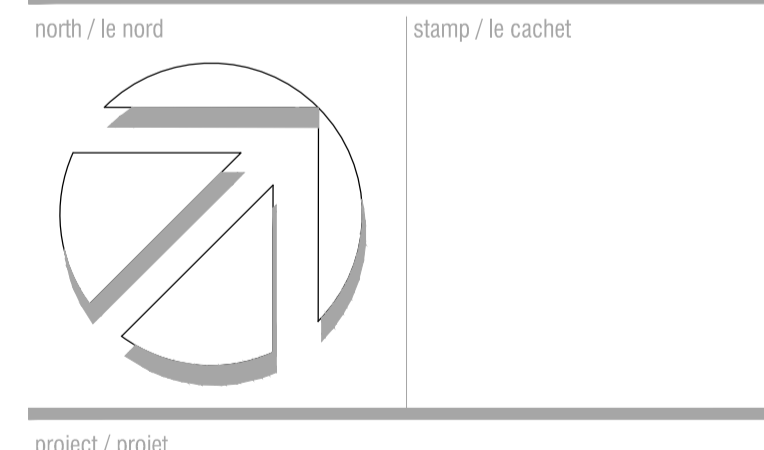
Copyright Reserved
The Copyrights to all designs and drawings are the property of Fotenn Consultants Inc. Unauthorised reproduction or use is forbidden. DO NOT SCALE DRAWING
Copyright réservés
Les droits d'auteur à tous les modèles et dessins sont la propriété de Fotenn Consultants Inc. Reproduction ou utilisation non autorisée est interdite. NE PAS L'ÉCHELLE DE DESSIN



- legend / légende
- DECIDUOUS TREES (SEE PLANTING NOTES & SCHEDULE FOR SPECIES AND QUANTITIES)
 - CONIFEROUS TREES (SEE PLANTING SCHEDULE FOR SPECIES AND QUANTITIES)
 - SHRUBS, PERENNIALS, GRASSES (SEE PLANTING SCHEDULE FOR SPECIES AND QUANTITIES)
 - PLANT KEY
 - EXISTING ASPHALT
 - PROPOSED ASPHALT (SEE 5/L3)
 - CONCRETE PAVING (SEE 7/L3)
 - PRECAST CONCRETE PAVERS (SEE 6/L3 FOR DETAIL AND LAYOUT)
 - SOD

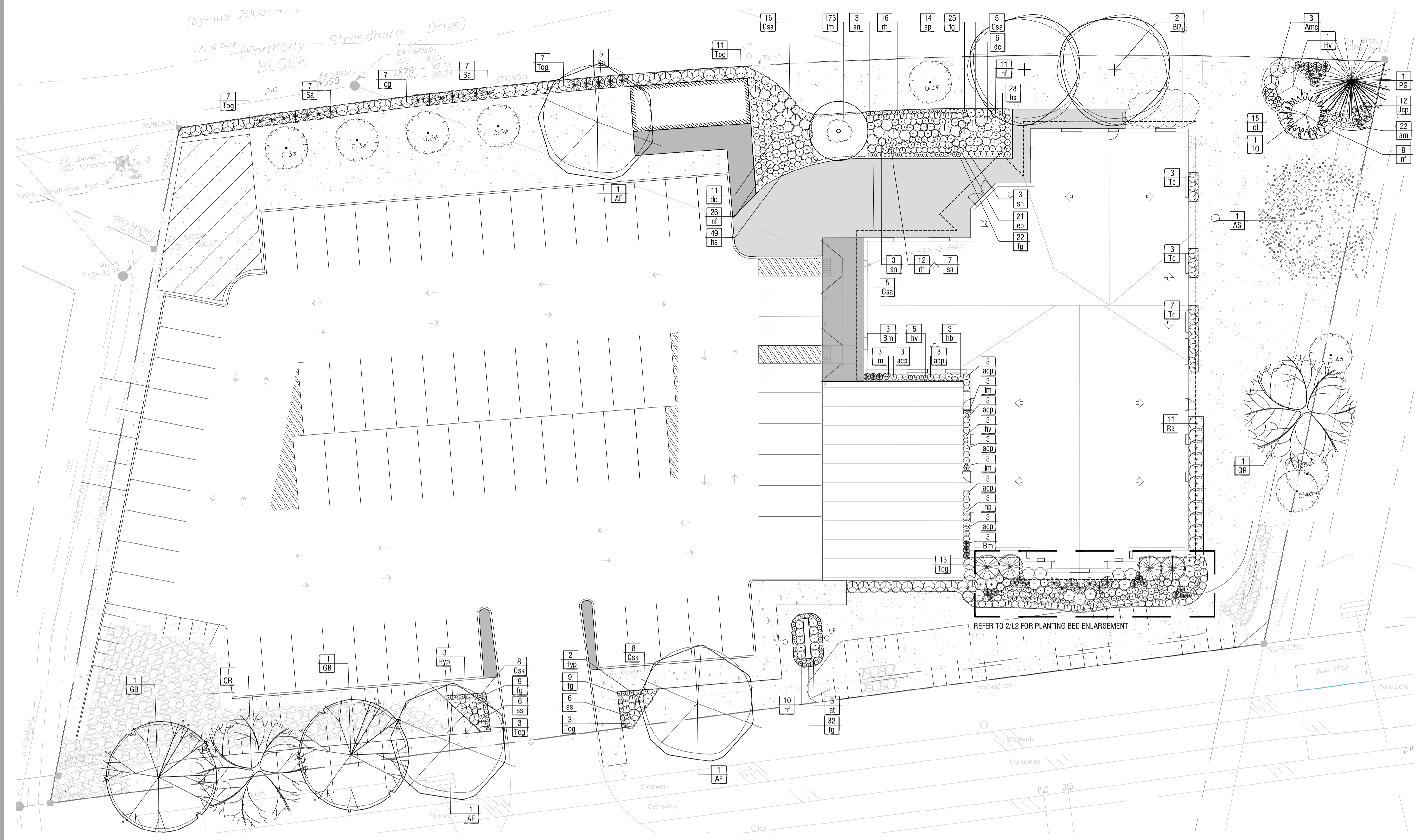
05	Re-Issued for SPA	2024-03-28
04	Re-Issued for SPA	2024-01-17
03	Re-Issued for SPA	2023-12-20
02	Re-Issued for SPA	2023-12-18
01	Issued for SPA	2023-08-10
00	Issued for coordination	2023/08/04
rev'n	description / la description	yyyy/mm/dd

FOTENN Planning + Design
396 Cooper Street, Suite 300
Ottawa, ON, CANADA K2P 2H7
613.730.5709
fotenn.com

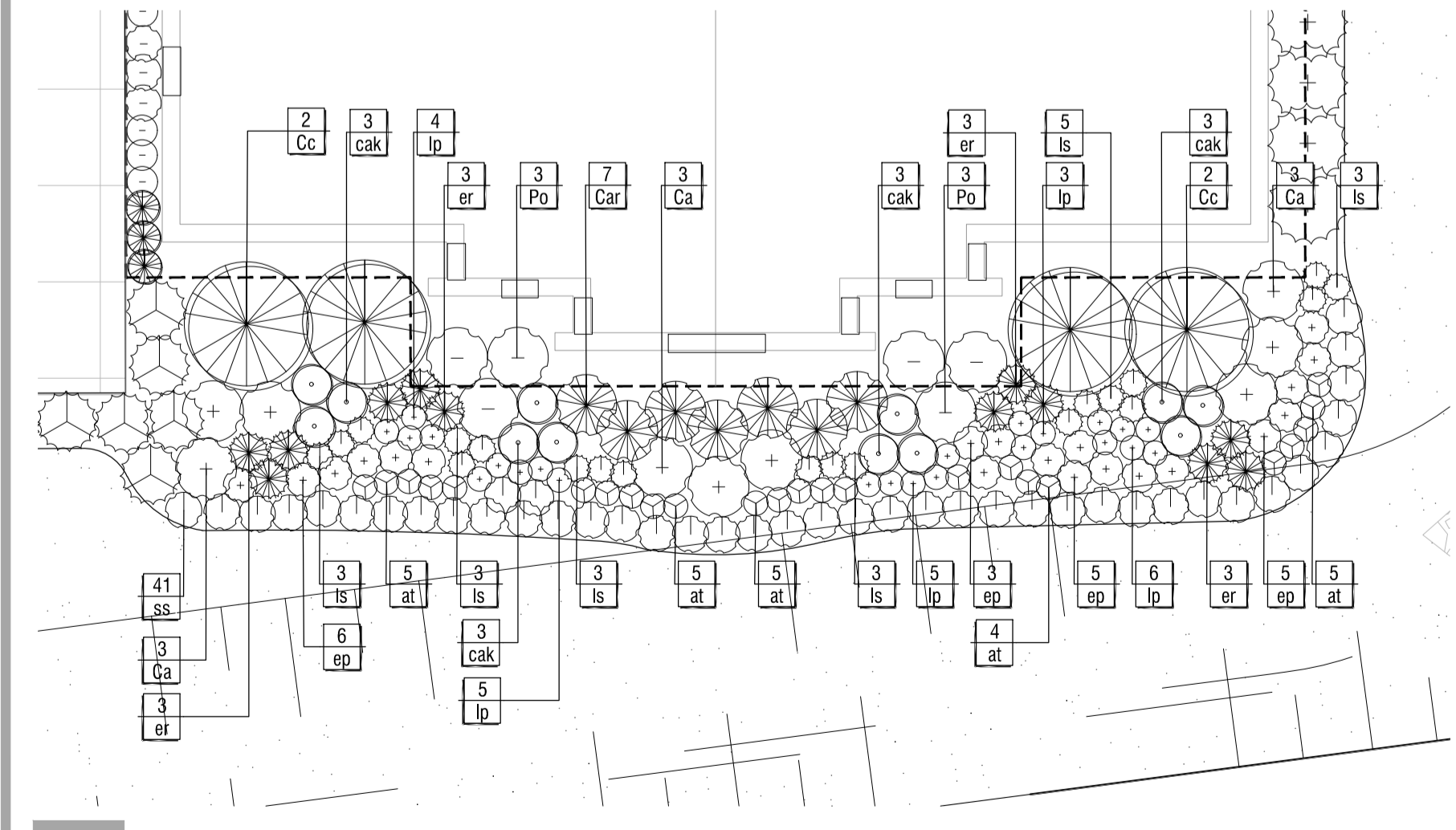


4000 Strandherd Drive

drawing / dessin
PLANTING PLAN
designed / conçu
SG
drawn / dessiné
SG
reviewed / examiné
OM
date
JULY 2023
project number / No. du projet



1 PLANTING PLAN
L2 1:200



2 FRONT PLANTING BED ENLARGEMENT
L2 1:100

PLANTING SCHEDULE

KEY	QTY	BOTANICAL NAME	COMMON NAME	SIZE / CONDITION / SPACING
DECIDUOUS TREES				
AF	3	Acer x freemanii	Freemant's Maple	50mm cal. / W.B.
AS	1	Acer saccharum	Sugar Maple	50mm cal. / W.B.
BP	2	Betula papyrifera	Paper Birch	50mm cal. / W.B. / Multistem
GB	2	Ginkgo biloba	Maidenhair Tree	50mm cal. / W.B.
QR	2	Quercus rubra	Red Oak	50mm cal. / W.B.
CONIFEROUS TREES				
PG	1	Picea glauca	White Spruce	200cm ht. / W.B.
TO	1	Thuja occidentalis	Eastern White Cedar	200 cm ht. / clump, field dug
DECIDUOUS SHRUBS				
Amc	3	Amorpha canescens	Lead Plant	#1 Pot / 80cm sp.
Ca	9	Ceanothus americanus	New Jersey Tea	#2 Pot / 100cm sp.
Car	7	Clethra alnifolia 'Ruby Spice'	Summersweet	80cm ht. / 80cm sp.
Csa	26	Cornus sericea 'Arctic Fire'	Arctic Fire Dogwood	#3 Pot / 80cm sp.
Csk	16	Cornus sericea 'Kelsey'	Kelsey Dwarf Dogwood	#2 Pot / 45cm o.c.
Cc	4	Cotinus coggygria 'Royal Purple'	Royal Purple Smoke Bush	80cm ht. / 200cm sp.
Hv	1	Hamamelis vernalis	Vernal Witchhazel	#3 pot
Hyp	5	Hypericum prolificum	Shrubby St. John's Wort	#2 pot / 70cm o.c.
Po	6	Physocarpus opulifolius 'Dart's Gold'	Dart's Gold Ninebark	#3 pot / 100cm sp.
Ra	11	Ribes aureum	Golden Currant	80cm ht. / 100 sp.
Sa	19	Symphoricarpos albus	Snowberry	50cm ht. / 100cm sp.

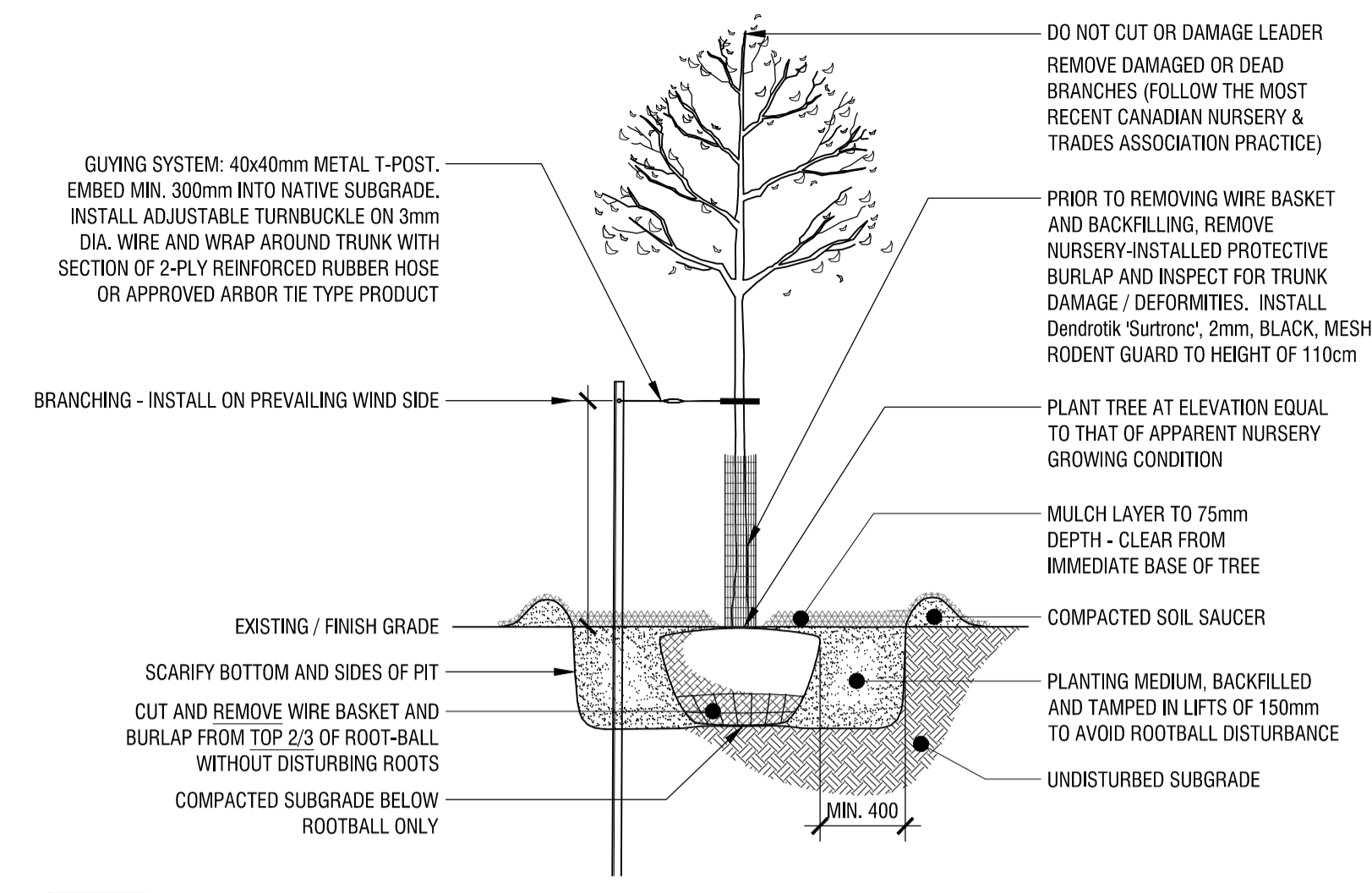
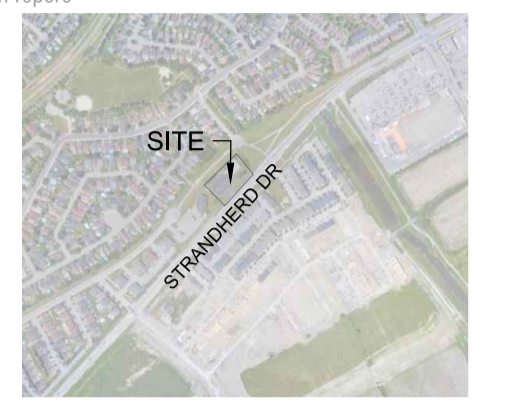
EVERGREEN SHRUBS

Bm	6	Buxus microphylla 'Faulkner'	Faulkner Boxwood	#2 Pot / 40cm sp.
Jcp	12	Juniperus chinensis 'Paul's Gold'	Paul's Gold Juniper	#1 Pot / 40cm sp.
Tc	2	Taxus canadensis	Canadian Yew	#2 Pot / 80cm sp.
Tog	53	Thuja occidentalis 'Golden Globe'	Golden Globe Cedar	80cm ht. / 90cm sp.

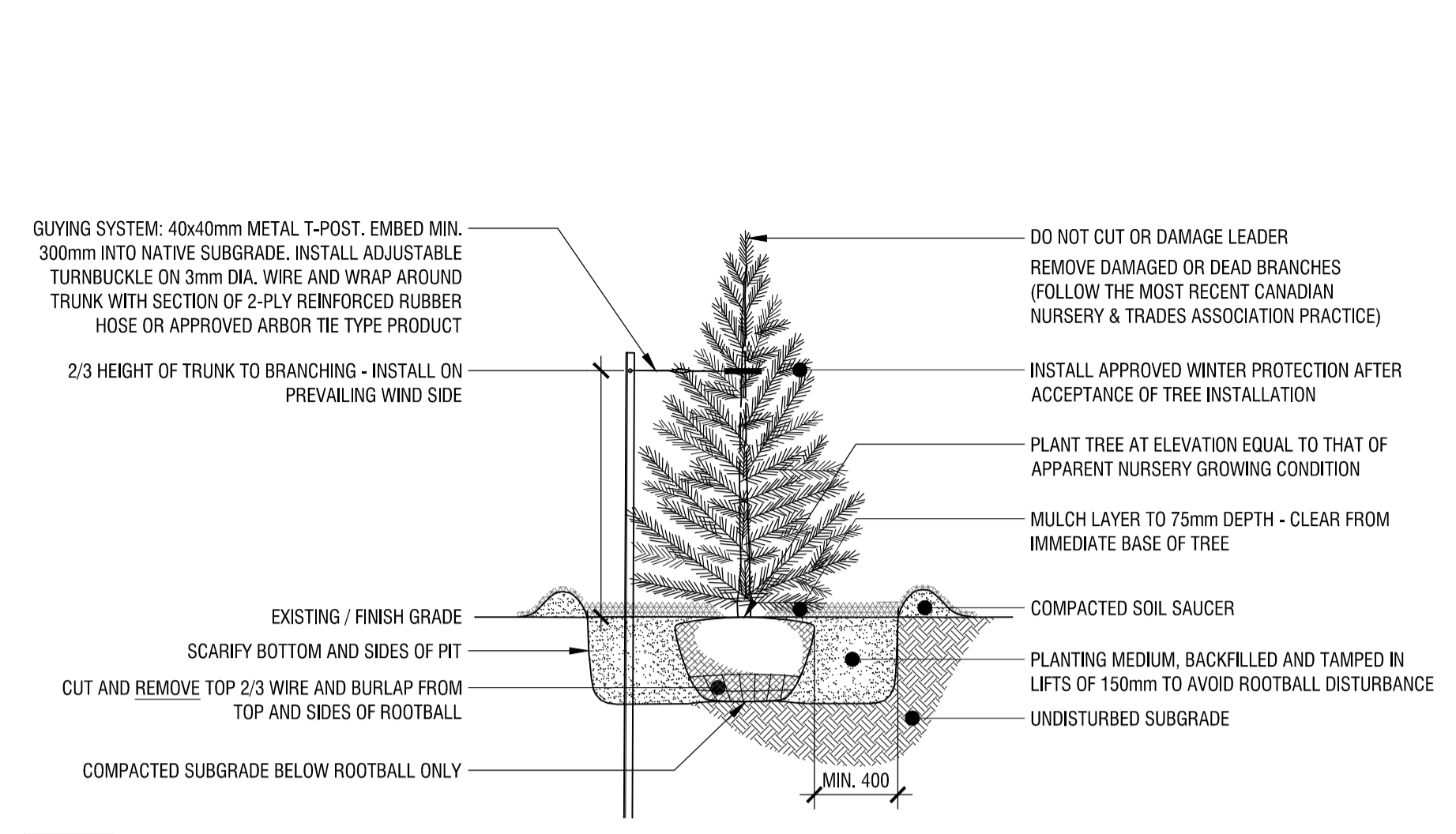
PERENNIALS & GRASSES

am	22	Achillea millefolium 'Summer Pastels'	Summer Pastels Yarrow	#1 Pot / 40cm o.c.
at	27	Asclepias tuberosa	Butterfly Milkweed	#1 / 40cm o.c.
acp	21	Astilbe chinensis 'Vision in Pink'	False Spirea	#1 Pot / 50cm o.c.
cak	12	Calamagrostis acutiflora 'Karl Foerster'	Feather Reed Grass	#2 Pot / 60cm o.c.
cl	15	Coreopsis lanceolata	Lance Leaved Tickseed	#1 Pot / 40cm o.c.
dc	17	Deschampsia cespitosa	Tufted Hair Grass	#1 Pot / 60cm o.c.
ep	54	Echinacea purpurea 'Merlot'	Merlot Coneflower	#1 Pot / 50cm o.c.
er	12	Echinops ritro 'Veitch's Blue'	Globe Thistle	#1 Pot / 60cm o.c.
fg	97	Festuca glauca 'Elijah Blue'	Elijah Blue Fescue	#1 Pot / 30cm o.c.
hs	77	Hemerocallis 'Stella de Oro'	Stella D'Oro Daylily	#1 Pot / 50cm o.c.
hb	6	Heuchera villosa 'Caramel'	Coral Bells	#1 Pot / 30cm o.c.
hb	6	Hosta 'Battie Star'	Plantain Lily	#1 Pot / 50cm o.c.
ls	20	Liatris spicata	Dense Blazing Star	#1 Pot / 35cm o.c.
lm	182	Liriope muscari 'Variegata'	Variegated Lily Turf	#1 Pot / 30cm o.c.
lp	23	Lupinus perennis	Sundial Lupine	#1 Pot / 40cm o.c.
nf	56	Nepeta faassenii 'Cat's Meow'	Catmint	#1 / 60cm o.c.
rh	28	Rudbeckia hurta	Blackeyed Susan	#1 Pot / 40cm o.c.
ss	53	Sedum spectabile 'Autumn Fire'	Showy Stonecrop	#1 Pot / 60cm o.c.
sn	16	Sorghastrum nutans	Indian Grass	#1 Pot / 60cm o.c.

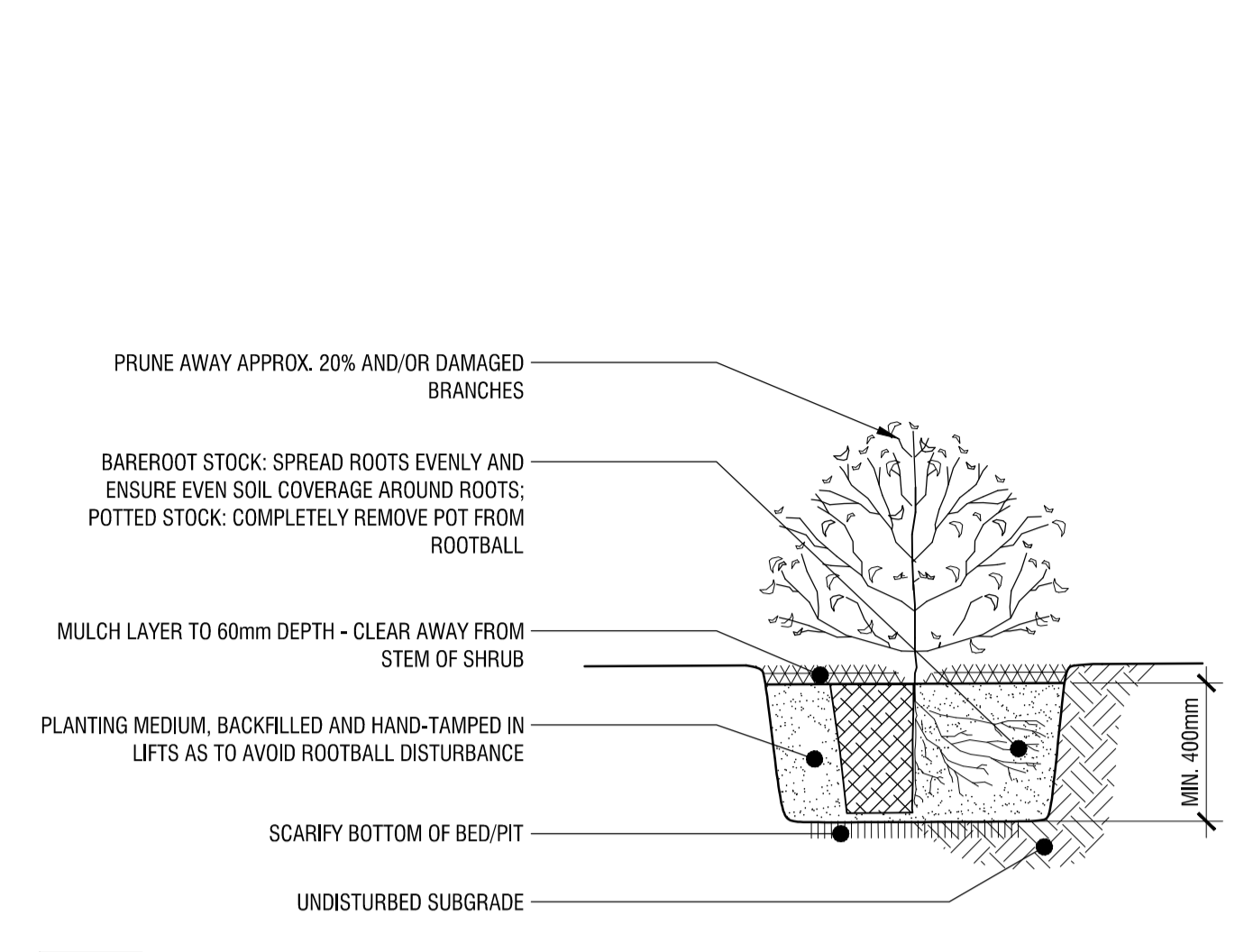
FOTI INFORMATION: DWG NAME: P:\PROJECTS\Spadola_Angelo\4000 Strandherd Drive_Landscape\SS\12530101\12530101_P1_V01.dwg
 FOTI DATE: 2024-03-28 10:22:10 PM
 SHEET SIZE: ISO (A1) (594.0 x 841.0 MM)
 PLOTTED BY: Susan Garwood
 LAST SAVED BY: sgwood



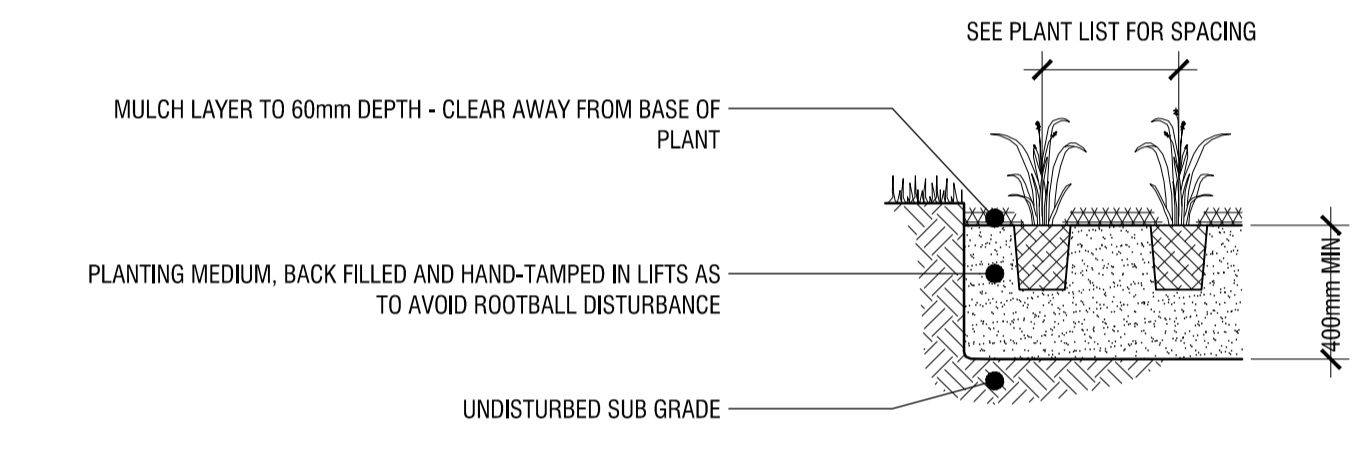
1
L3 **DECIDUOUS TREE**
1:30



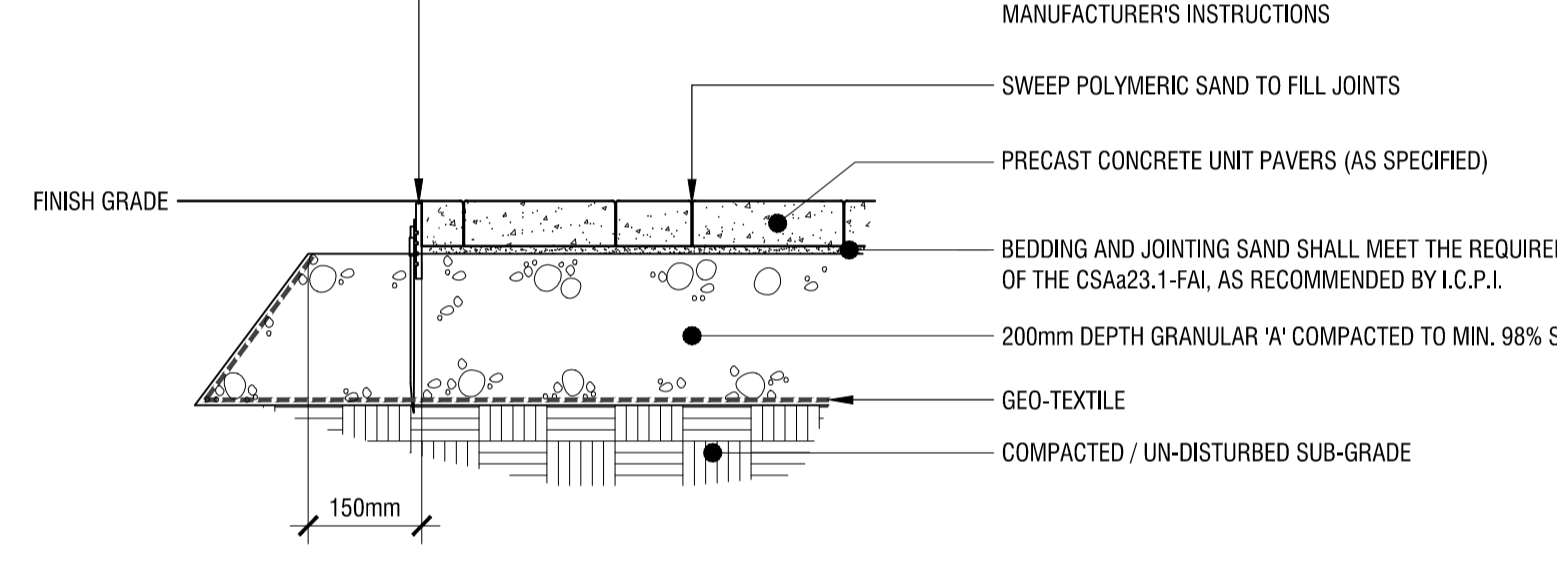
2
L3 **CONIFEROUS TREE**
1:30



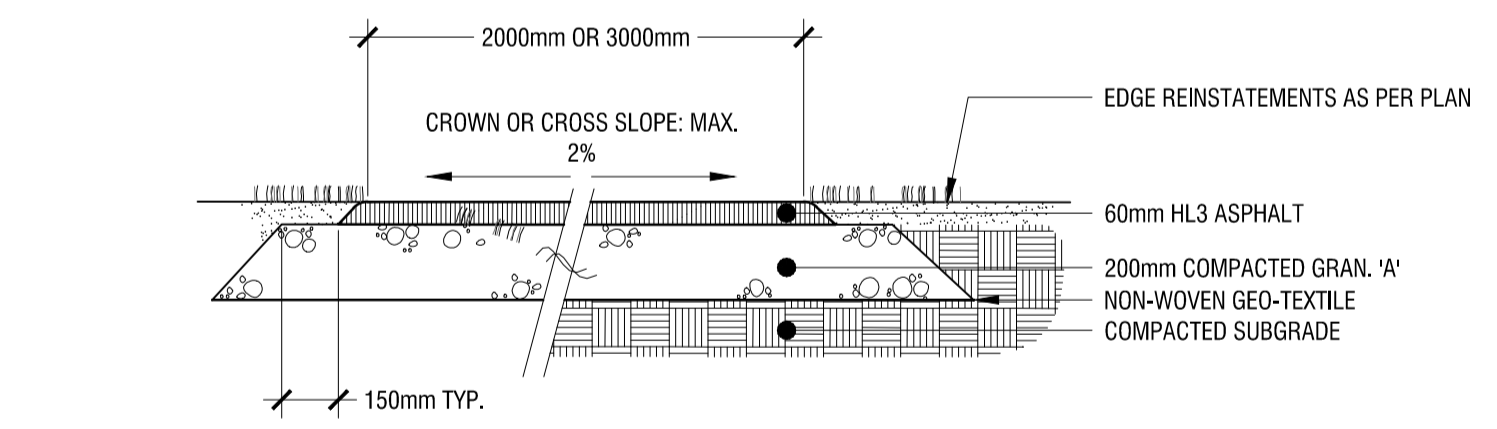
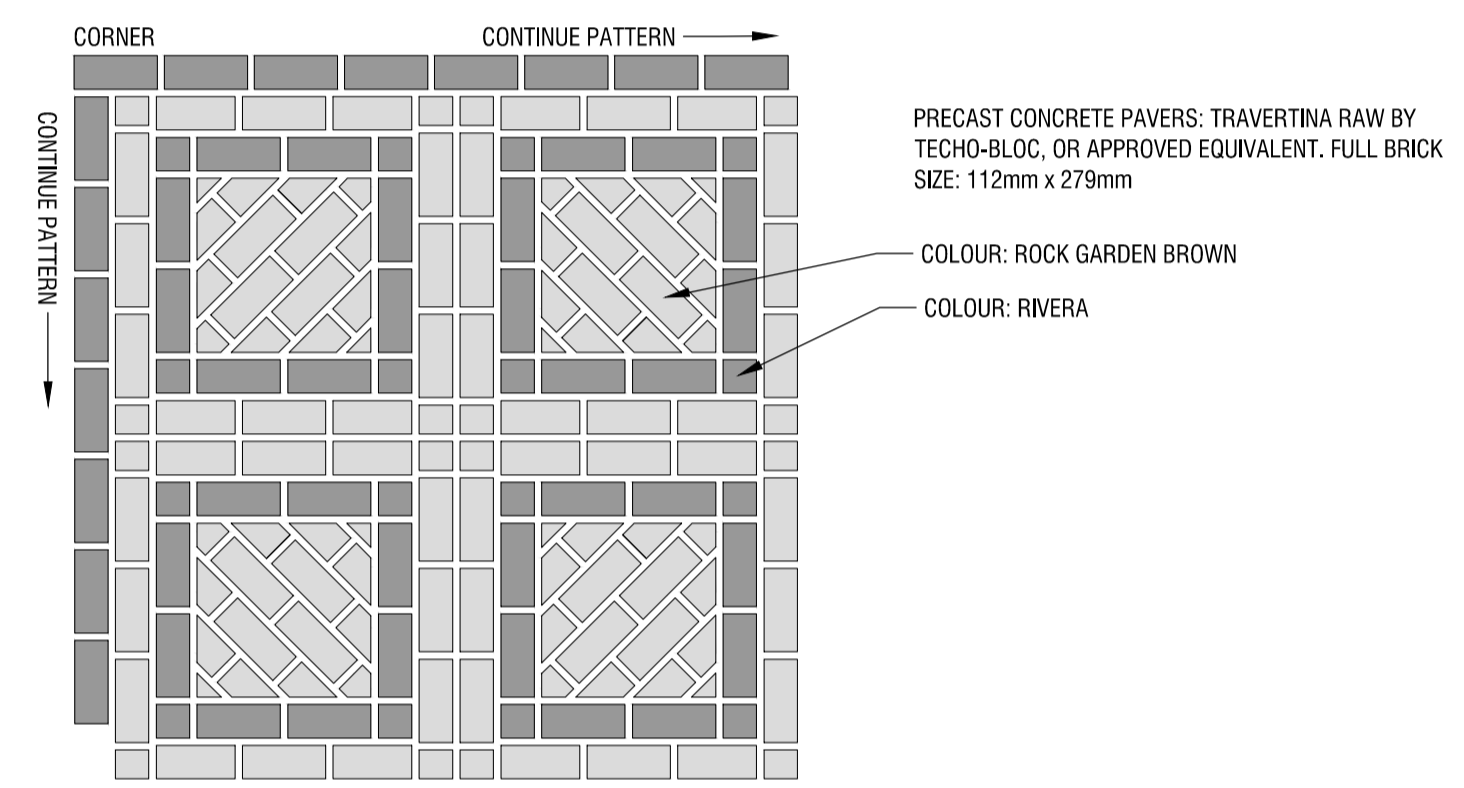
3
L3 **SHRUB PLANTING**
1:20



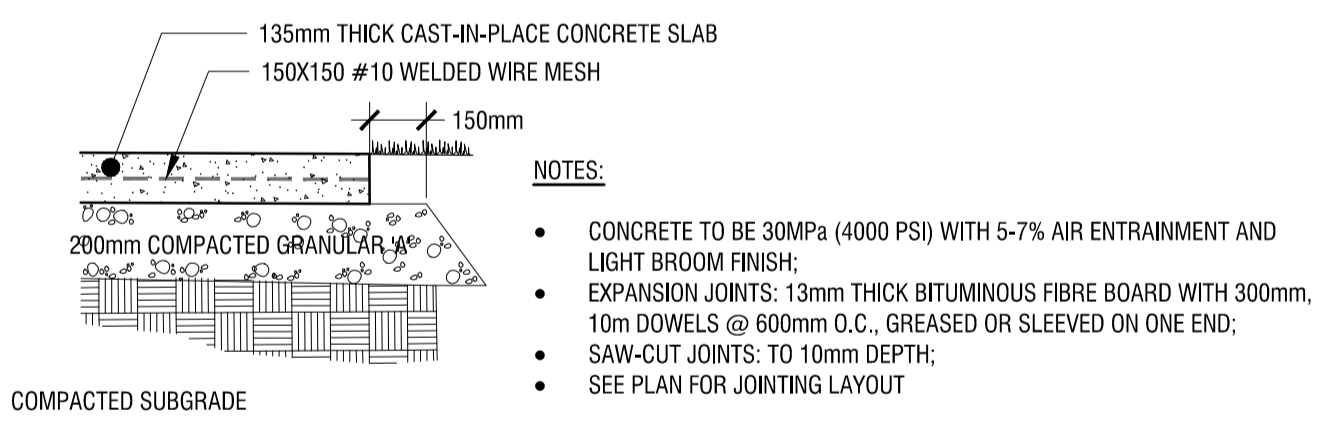
4
L3 **PERENNIAL AND GRASS PLANTING**
1:20



5
L3 **PRECAST CONCRETE PAVER DETAIL AND LAYOUT**
1:10



6
L3 **LIGHT DUTY ASPHALT PATHWAY**
1:20



7
L3 **CAST IN PLACE CONCRETE PAVING**
1:20

PRELIMINARY
NOT FOR CONSTRUCTION

rev'n	description / la description	yyyy/mm/dd
05	Re-Issued for SPA	2024-03-28
04	Re-Issued for SPA	2024-01-17
03	Re-Issued for SPA	2023-12-20
02	Re-Issued for SPA	2023-12-18
01	Issued for SPA	2023-08-10
00	Issued for coordination	2023/08/04

FOTENN Planning + Design
396 Cooper Street, Suite 300
Ottawa, ON, CANADA K2P 2H7
613.730.5709
fotenn.com

project / projet	stamp / le cachet
4000 Strandherd Drive	

drawing / dessin

DETAILS

designed / conçu	drawn / dessiné	reviewed / examiné
SG	SG	OM
date	project number / No. du projet	
JULY 2023		

PLOT INFORMATION: DWG NAME: P:\PROJECTS\Spadola_Angelo\4000 Strandherd Drive_Landscapes\4000 Strandherd Drive - L3.dwg PLOT DATE: 2024-03-28 10:42:29 AM PLOT BY: Susan Garwood - LAST SAVED BY: sgarwood