

FINISH MATERIAL LEGEND:

- AC2 ALUMINUM CORNER CAP
- AC3 ALUMINUM CURTAIN HALL FINISHING (PRE FINISHED)
- AC4 ALUMINUM CAP FLASHING (PRE FINISHED)
- AC5 ALUMINUM 4 GLASS PRIVACY SCREEN
- AC6 ALUMINUM 4 GLASS GUARD C/W ALUMINUM RAILING
- AL ALUMINUM LOUVER (PREFINISHED)
- AD ALUMINUM DOOR
- AP1 ALUMINUM SIDING (PRE FINISHED) (COLOUR 1)
- AP2 ALUMINUM SIDING (PRE FINISHED) (COLOUR 2)
- AP3 ALUMINUM SIDING (PRE FINISHED) (COLOUR 3)
- AP4 ALUMINUM WINDOW FRAMING - FLACED
- AS WINDOW SYSTEM (PRE FINISHED)
- BT1 BRICK MASONRY - TYPE 1
- BT2 BRICK MASONRY - TYPE 2
- EC EXPOSED CONCRETE (BALCONIES, CANOPES)
- EFA EXPOSED ARCHITECTURAL FINISHED CONCRETE (SMOOTH FINISH)
- HM HOLLOW METAL DOOR (INSULATED)
- MT METAL TRUSSES
- OC OVERHEAD DOOR - PRE FINISHED
- PC PRECAST CONCRETE
- PF PRE-FINISH METAL CAP FLASHING
- PSP PAINTED STEEL POST
- PFL PRE-FINISH METAL FLASHING
- RHS RETAINING WALL (SEE LANDSCAPING)
- ST1 STONE VENEER - TYPE 1
- SC STEEL CANOPY
- SP SPANDREL GLASS COLOUR 1
- VPE WOOD FENCE (SEE LANDSCAPING)

- W WINDOW TYPE, FLACED WINDOW SYSTEM, REFER TO WINDOW SCHEDULE
- WH WINDOW TYPE, REFER TO WINDOW SCHEDULE
- CWH CURTAIN HALL TYPE, REFER TO WINDOW SCHEDULE
- DNR DOOR NUMBER, REFER TO DOOR SCHEDULE
- MA MASONRY SHELF ANGLE
- SMA SUSPENDED MASONRY SHELF ANGLE
- CJ MASONRY CONTROL JOINT
- LF EXTERIOR LIGHT FIXTURE, REFER TO ELEC. DWGS. THROUGH WALL
- AL ALUMINUM LOUVER
- SP SPANDREL GLASS PANEL
- AL ALUMINUM LOUVER
- AL ALUMINUM SPANDREL PANEL
- S SPECIES, OFFSHORE (WINDOW SASH - OUT FINISHING)

no.	date	revision
2	MAY /2024	ISSUED FOR SITE PLAN
1	DEC /2023	ISSUED FOR CLASS 'D' ESTIMATE

It is the responsibility of the appropriate contractor to check and verify all dimensions on site and report all errors and/or omissions to the architect.

All contractors must comply with all pertinent codes and by-laws.

Do not scale drawings.

This drawing may not be used for construction until signed.

Copyright reserved.



Hobin Architecture Incorporated
 63 Pamela Street
 Ottawa, Ontario
 Canada K1S 3K7
 T: 613 238-7200
 F: 613 235-2005
 E: info@hobin.com
 hobin.com

PROJECT/LOCATION:
 GLADSTONE & LORETTA
 RESIDENTIAL TOWER
 145 LORETTA AVE. NORTH

DRAWING TITLE:
 EAST ELEVATION

DRAWN BY: TD / JC	DATE: OCT.2023	SCALE: 1:200
PROJECT: 1726		DRAWING NO.: A3.02
REVISION NO.:		

007-12-21-0053



FINISH MATERIAL LEGEND:

- ALP1 ALUMINUM CORNER CAP
- ALP2 ALUMINUM CURTAIN WALL FINISHING (PRE FINISHED)
- ALP3 ALUMINUM CAP FLASHING (PRE FINISHED)
- ALP4 ALUMINUM # GLASS PRIVACY SCREEN
- ALP5 ALUMINUM # GLASS GUARD C/W ALUMINUM RAILING
- ALP6 ALUMINUM LOUVER (PREFINISHED)
- ALP7 ALUMINUM DOOR
- ALP8 ALUMINUM SIDING (PRE FINISHED) (COLOUR 1)
- ALP9 ALUMINUM SIDING (PRE FINISHED) (COLOUR 2)
- ALP10 ALUMINUM SIDING (PRE FINISHED) (COLOUR 3)
- ALP11 ALUMINUM WINDOW FRAMING - FLASHER
- ALP12 WINDOW SYSTEM (PRE FINISHED)
- ALP13 ALUMINUM WINDOW FRAMING - FLASHER
- ALP14 BRICK MASONRY - TYPE 1
- ALP15 BRICK MASONRY - TYPE 2
- ALP16 EXPOSED CONCRETE (BALCONIES, CANOPES)
- ALP17 EXPOSED ARCHITECTURAL FINISHED CONCRETE (SMOOTH FINISH)
- ALP18 HOLLOW METAL DOOR (INSULATED)
- ALP19 METAL SIDING - TYPE 1 (PRE FINISHED)
- ALP20 METAL TRELLIS
- ALP21 OVERHEAD DOOR - PRE FINISHED
- ALP22 PRECAST CONCRETE
- ALP23 PRE-FINISH METAL CAP FLASHING
- ALP24 PAINTED STEEL POST
- ALP25 PRE-FINISH METAL FLASHING
- ALP26 RETAINING WALL (SEE LANDSCAPING)
- ALP27 STONE VENEER - TYPE 1
- ALP28 STEEL CANOPY
- ALP29 SPANDREL GLASS COLOUR 1
- ALP30 WOOD FENCE (SEE LANDSCAPING)

WINDOW TYPE:

- W1 WINDOW TYPE: FLASHER WINDOW SYSTEM REFER TO WINDOW SCHEDULE
- W2 WINDOW TYPE: REFER TO WINDOW SCHEDULE
- W3 WINDOW TYPE: REFER TO WINDOW SCHEDULE
- W4 WINDOW TYPE: REFER TO WINDOW SCHEDULE
- W5 WINDOW TYPE: REFER TO WINDOW SCHEDULE
- W6 WINDOW TYPE: REFER TO WINDOW SCHEDULE
- W7 WINDOW TYPE: REFER TO WINDOW SCHEDULE
- W8 WINDOW TYPE: REFER TO WINDOW SCHEDULE
- W9 WINDOW TYPE: REFER TO WINDOW SCHEDULE
- W10 WINDOW TYPE: REFER TO WINDOW SCHEDULE
- W11 WINDOW TYPE: REFER TO WINDOW SCHEDULE
- W12 WINDOW TYPE: REFER TO WINDOW SCHEDULE
- W13 WINDOW TYPE: REFER TO WINDOW SCHEDULE
- W14 WINDOW TYPE: REFER TO WINDOW SCHEDULE
- W15 WINDOW TYPE: REFER TO WINDOW SCHEDULE
- W16 WINDOW TYPE: REFER TO WINDOW SCHEDULE
- W17 WINDOW TYPE: REFER TO WINDOW SCHEDULE
- W18 WINDOW TYPE: REFER TO WINDOW SCHEDULE
- W19 WINDOW TYPE: REFER TO WINDOW SCHEDULE
- W20 WINDOW TYPE: REFER TO WINDOW SCHEDULE
- W21 WINDOW TYPE: REFER TO WINDOW SCHEDULE
- W22 WINDOW TYPE: REFER TO WINDOW SCHEDULE
- W23 WINDOW TYPE: REFER TO WINDOW SCHEDULE
- W24 WINDOW TYPE: REFER TO WINDOW SCHEDULE
- W25 WINDOW TYPE: REFER TO WINDOW SCHEDULE
- W26 WINDOW TYPE: REFER TO WINDOW SCHEDULE
- W27 WINDOW TYPE: REFER TO WINDOW SCHEDULE
- W28 WINDOW TYPE: REFER TO WINDOW SCHEDULE
- W29 WINDOW TYPE: REFER TO WINDOW SCHEDULE
- W30 WINDOW TYPE: REFER TO WINDOW SCHEDULE
- W31 WINDOW TYPE: REFER TO WINDOW SCHEDULE
- W32 WINDOW TYPE: REFER TO WINDOW SCHEDULE
- W33 WINDOW TYPE: REFER TO WINDOW SCHEDULE
- W34 WINDOW TYPE: REFER TO WINDOW SCHEDULE
- W35 WINDOW TYPE: REFER TO WINDOW SCHEDULE
- W36 WINDOW TYPE: REFER TO WINDOW SCHEDULE
- W37 WINDOW TYPE: REFER TO WINDOW SCHEDULE
- W38 WINDOW TYPE: REFER TO WINDOW SCHEDULE
- W39 WINDOW TYPE: REFER TO WINDOW SCHEDULE
- W40 WINDOW TYPE: REFER TO WINDOW SCHEDULE
- W41 WINDOW TYPE: REFER TO WINDOW SCHEDULE
- W42 WINDOW TYPE: REFER TO WINDOW SCHEDULE
- W43 WINDOW TYPE: REFER TO WINDOW SCHEDULE
- W44 WINDOW TYPE: REFER TO WINDOW SCHEDULE
- W45 WINDOW TYPE: REFER TO WINDOW SCHEDULE
- W46 WINDOW TYPE: REFER TO WINDOW SCHEDULE
- W47 WINDOW TYPE: REFER TO WINDOW SCHEDULE
- W48 WINDOW TYPE: REFER TO WINDOW SCHEDULE
- W49 WINDOW TYPE: REFER TO WINDOW SCHEDULE
- W50 WINDOW TYPE: REFER TO WINDOW SCHEDULE
- W51 WINDOW TYPE: REFER TO WINDOW SCHEDULE
- W52 WINDOW TYPE: REFER TO WINDOW SCHEDULE
- W53 WINDOW TYPE: REFER TO WINDOW SCHEDULE
- W54 WINDOW TYPE: REFER TO WINDOW SCHEDULE
- W55 WINDOW TYPE: REFER TO WINDOW SCHEDULE
- W56 WINDOW TYPE: REFER TO WINDOW SCHEDULE
- W57 WINDOW TYPE: REFER TO WINDOW SCHEDULE
- W58 WINDOW TYPE: REFER TO WINDOW SCHEDULE
- W59 WINDOW TYPE: REFER TO WINDOW SCHEDULE
- W60 WINDOW TYPE: REFER TO WINDOW SCHEDULE
- W61 WINDOW TYPE: REFER TO WINDOW SCHEDULE
- W62 WINDOW TYPE: REFER TO WINDOW SCHEDULE
- W63 WINDOW TYPE: REFER TO WINDOW SCHEDULE
- W64 WINDOW TYPE: REFER TO WINDOW SCHEDULE
- W65 WINDOW TYPE: REFER TO WINDOW SCHEDULE
- W66 WINDOW TYPE: REFER TO WINDOW SCHEDULE
- W67 WINDOW TYPE: REFER TO WINDOW SCHEDULE
- W68 WINDOW TYPE: REFER TO WINDOW SCHEDULE
- W69 WINDOW TYPE: REFER TO WINDOW SCHEDULE
- W70 WINDOW TYPE: REFER TO WINDOW SCHEDULE
- W71 WINDOW TYPE: REFER TO WINDOW SCHEDULE
- W72 WINDOW TYPE: REFER TO WINDOW SCHEDULE
- W73 WINDOW TYPE: REFER TO WINDOW SCHEDULE
- W74 WINDOW TYPE: REFER TO WINDOW SCHEDULE
- W75 WINDOW TYPE: REFER TO WINDOW SCHEDULE
- W76 WINDOW TYPE: REFER TO WINDOW SCHEDULE
- W77 WINDOW TYPE: REFER TO WINDOW SCHEDULE
- W78 WINDOW TYPE: REFER TO WINDOW SCHEDULE
- W79 WINDOW TYPE: REFER TO WINDOW SCHEDULE
- W80 WINDOW TYPE: REFER TO WINDOW SCHEDULE
- W81 WINDOW TYPE: REFER TO WINDOW SCHEDULE
- W82 WINDOW TYPE: REFER TO WINDOW SCHEDULE
- W83 WINDOW TYPE: REFER TO WINDOW SCHEDULE
- W84 WINDOW TYPE: REFER TO WINDOW SCHEDULE
- W85 WINDOW TYPE: REFER TO WINDOW SCHEDULE
- W86 WINDOW TYPE: REFER TO WINDOW SCHEDULE
- W87 WINDOW TYPE: REFER TO WINDOW SCHEDULE
- W88 WINDOW TYPE: REFER TO WINDOW SCHEDULE
- W89 WINDOW TYPE: REFER TO WINDOW SCHEDULE
- W90 WINDOW TYPE: REFER TO WINDOW SCHEDULE
- W91 WINDOW TYPE: REFER TO WINDOW SCHEDULE
- W92 WINDOW TYPE: REFER TO WINDOW SCHEDULE
- W93 WINDOW TYPE: REFER TO WINDOW SCHEDULE
- W94 WINDOW TYPE: REFER TO WINDOW SCHEDULE
- W95 WINDOW TYPE: REFER TO WINDOW SCHEDULE
- W96 WINDOW TYPE: REFER TO WINDOW SCHEDULE
- W97 WINDOW TYPE: REFER TO WINDOW SCHEDULE
- W98 WINDOW TYPE: REFER TO WINDOW SCHEDULE
- W99 WINDOW TYPE: REFER TO WINDOW SCHEDULE
- W100 WINDOW TYPE: REFER TO WINDOW SCHEDULE

2	MAY /2024	ISSUED FOR SITE PLAN
1	DEC /2023	ISSUED FOR CLASS 'D' ESTIMATE
no.	date	revision

It is the responsibility of the appropriate contractor to check and verify all dimensions on site and report all errors and/or omissions to the architect.

All contractors must comply with all pertinent codes and by-laws.

Do not scale drawings.

This drawing may not be used for construction until signed.

Copyright reserved.

ONTARIO ASSOCIATION OF ARCHITECTS

ARCHITECT

ARTHUR J. HOBIN

LICENCE 3049

Hobin Architecture Incorporated

63 Pamela Street
Ottawa, Ontario
Canada K1S 3K7

T: 613 238-7200
F: 613 235-2005
E: info@hobin.com
hobin.com

HOBIN ARCHITECTURE

PROJECT/LOCATION:

GLADSTONE & LORETTA RESIDENTIAL TOWER
145 LORETTA AVE. NORTH

DRAWING TITLE:

NORTH ELEVATION

DRAWN BY:	DATE:	SCALE:
TD / JC	OCT.2023	1:200

PROJECT: 1726
DRAWING NO.: A3.01
REVISION NO.: 001



FINISH MATERIAL LEGEND:

- AC1 ALUMINUM CORNER CAP
- AC2 ALUMINUM CURTAIN HALL FRAMING (PRE FINISHED)
- AC3 ALUMINUM CAP FLASHING (PRE FINISHED)
- AC4 ALUMINUM 4 GLASS PRIVACY SCREEN
- AC5 ALUMINUM 4 GLASS GUARD C/W ALUMINUM RAILING
- AL ALUMINUM LOUVER (PREFINISHED)
- AD ALUMINUM DOOR
- ALP ALUMINUM SIDING (PRE FINISHED) (COLOUR 1)
- AL2 ALUMINUM SIDING (PRE FINISHED) (COLOUR 2)
- AL3 ALUMINUM SIDING (PRE FINISHED) (COLOUR 3)
- AL4 ALUMINUM WINDOW FRAMING - FLACED
- AL5 WINDOW SYSTEM (PRE FINISHED)
- BR1 BRICK MASONRY - TYPE 1
- BR2 BRICK MASONRY - TYPE 2
- CC EXPOSED CONCRETE (BALCONIES, CANOPES)
- CA EXPOSED ARCHITECTURAL FINISHED CONCRETE (SMOOTH FINISH)
- HD HOLLOW METAL DOOR (INSULATED)
- MT1 METAL SIDING - TYPE 1 (PRE FINISHED)
- MT2 METAL SIDING - TYPE 2 (PRE FINISHED)
- TR METAL TRELLIS
- OS OVERHEAD DOOR - PRE FINISHED
- PC PRECAST CONCRETE
- PF1 PRE-FINISH METAL CAP FLASHING
- PF2 PAINTED STEEL POST
- PF3 PRE-FINISH METAL FLASHING
- RF RETAINING WALL (SEE LANDSCAPING)
- ST1 STONE VENEER - TYPE 1
- SC STEEL CANOPY
- SP1 SPANDREL GLASS COLOUR 1
- SP2 HOOD FENCE (SEE LANDSCAPING)

WINDOW & DOOR SCHEDULES:

- W WINDOW TYPE, FLACED WINDOW SYSTEM, REFER TO WINDOW SCHEDULE
- WH WINDOW HALL TYPE, REFER TO WINDOW SCHEDULE
- DN DOOR NUMBER, REFER TO DOOR SCHEDULE
- SA MASONRY SHELF ANGLE
- SA.A SUSPENDED MASONRY SHELF ANGLE
- C.J MASONRY CONTROL JOINT
- LF EXTERIOR LIGHT FIXTURE, REFER TO ELEC. DWGS.
- LF EXTERIOR LIGHT FIXTURE THROUGH WALL
- SPANDREL GLASS PANEL
- ALUMINUM LOUVER
- ALUMINUM SPANDREL PANEL
- SPRINGS, OPTIONAL WINDOW SASH - OUT SWINDING

2	MAY /2024	ISSUED FOR SITE PLAN
1	DEC /2023	ISSUED FOR CLASS 'D' ESTIMATE
no.	date	revision

It is the responsibility of the appropriate contractor to check and verify all dimensions on site and report all errors and/or omissions to the architect.

All contractors must comply with all pertinent codes and by-laws.

Do not scale drawings.

This drawing may not be used for construction until signed.

Copyright reserved.

ONTARIO ASSOCIATION OF ARCHITECTS
 ARCHITECT
ARTHUR J. HOBIN
 LICENCE 3049

Hobin Architecture Incorporated
 63 Pamela Street
 Ottawa, Ontario
 Canada K1S 3K7
 T: 613 238-7200
 F: 613 235-2005
 E: info@hobin.com
 hobin.com

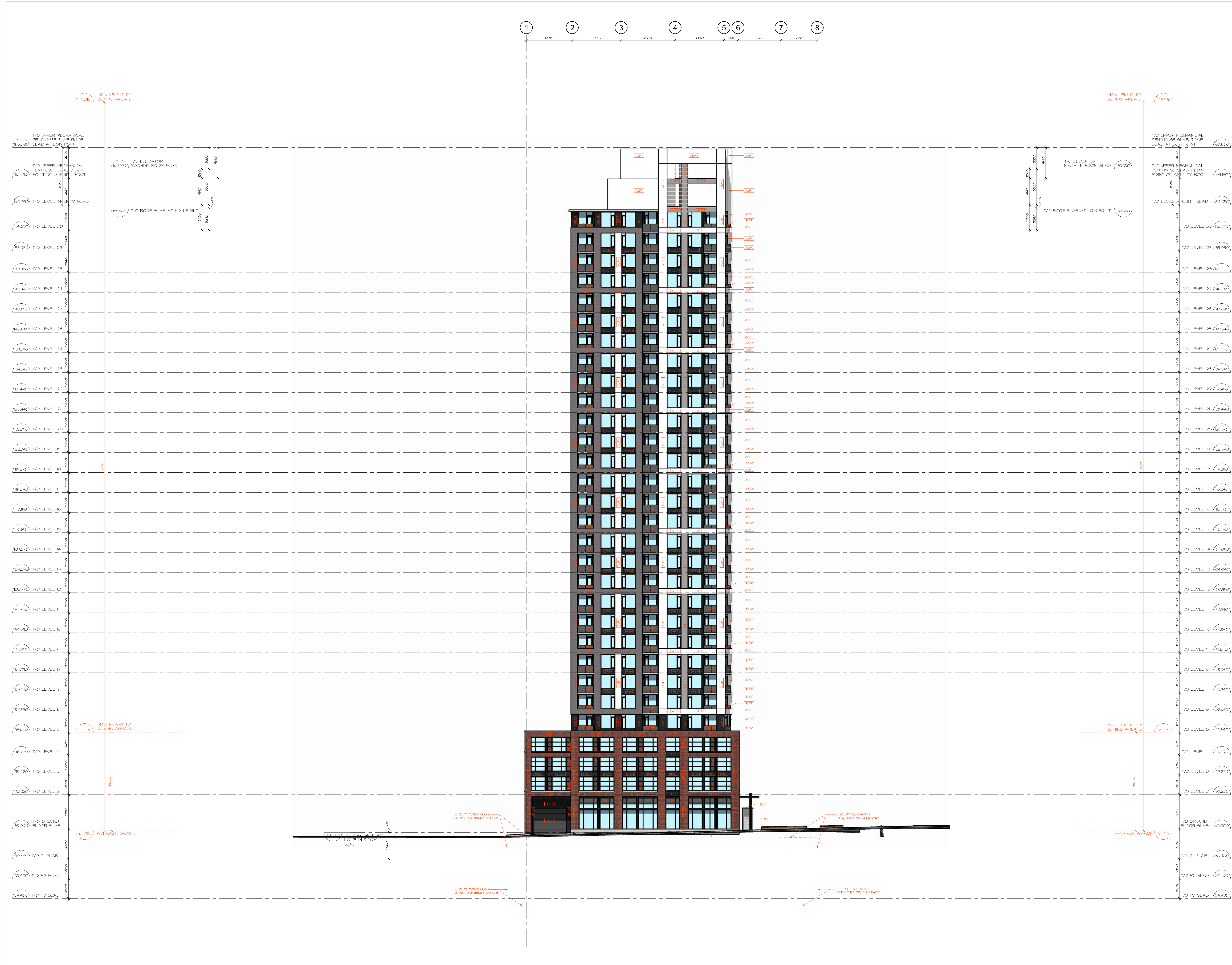
PROJECT/LOCATION:
 GLADSTONE & LORETTA RESIDENTIAL TOWER
 145 LORETTA AVE. NORTH

DRAWING TITLE:
 SOUTH ELEVATION

DRAWN BY:	DATE:	SCALE:
TD / JC	OCT.2023	1:200

PROJECT: 1726
 DRAWING NO.: A3.03
 REVISION NO.: 001

D07-12-21-0053
18526



- FINISH MATERIAL LEGEND:**
- AC2 ALUMINUM CORNER CAP
 - AC3 ALUMINUM CURTAIN HALL FINISHING (PRE FINISHED)
 - AL1 ALUMINUM CAP FLASHING (PRE FINISHED)
 - AS1 ALUMINUM 4 GLASS PRIVACY SCREEN
 - AS2 ALUMINUM 4 GLASS GUARD CAY ALUMINUM RAILING
 - AL ALUMINUM LOUVER (PREFINISHED)
 - AD ALUMINUM DOOR
 - ALP ALUMINUM SIDING (PRE FINISHED) (COLOUR 1)
 - AL2 ALUMINUM SIDING (PRE FINISHED) (COLOUR 2)
 - AL3 ALUMINUM SIDING (PRE FINISHED) (COLOUR 3)
 - ALF ALUMINUM WINDOW FRAMING - FLASCHED
 - AS ALUMINUM WINDOW SYSTEM (PRE FINISHED)
 - BR1 BRICK MASONRY - TYPE 1
 - BR2 BRICK MASONRY - TYPE 2
 - EC EXPOSED CONCRETE (BALCONIES, CANOPES)
 - EA EXPOSED ARCHITECTURAL FINISHED CONCRETE (SMOOTH FINISH)
 - HD HOLLOW METAL DOOR (INSULATED)
 - MT METAL SIDING - TYPE 1 (PRE FINISHED)
 - HT METAL TRELLIS
 - OD OVERHEAD DOOR - PRE FINISHED
 - PC PRECAST CONCRETE
 - PF1 PRE-FINISH METAL CAP FLASHING
 - PF2 PAINTED STEEL POST
 - PF3 PRE-FINISH METAL FLASHING
 - RF RETAINING WALL (SEE LANDSCAPING)
 - ST1 STONE VENEER - TYPE 1
 - SC STEEL CANOPY
 - SP1 SPANDREL GLASS COLOUR 1
 - SP2 HOOD FENCE (SEE LANDSCAPING)

- W WINDOW TYPE, FLASCHED WINDOW SYSTEM, REFER TO WINDOW SCHEDULE
- WH WINDOW HALL TYPE, REFER TO WINDOW SCHEDULE
- DN DOOR NUMBER, REFER TO DOOR SCHEDULE
- SA MASONRY SHELF ANGLE
- SSA SUSPENDED MASONRY SHELF ANGLE
- C.J MASONRY CONTROL JOINT
- LF EXTERIOR LIGHT FIXTURE, REFER TO ELEC. DWGS.
- ALF ALUMINUM LOUVER
- SPANDREL GLASS PANEL
- ALUMINUM LOUVER
- ALUMINUM SPANDREL PANEL
- SH SHIFTER, OPTIONAL (WINDOW SASH - OUT SWINGING)

no.	date	revision
2	MAY /2024	ISSUED FOR SITE PLAN
1	DEC /2023	ISSUED FOR CLASS 'D' ESTIMATE

It is the responsibility of the appropriate contractor to check and verify all dimensions on site and report all errors and/or omissions to the architect.

All contractors must comply with all pertinent codes and by-laws.

Do not scale drawings.

This drawing may not be used for construction until signed.

Copyright reserved.



Hobin Architecture Incorporated
 63 Pamela Street
 Ottawa, Ontario
 Canada K1S 3K7
 T: 613 238-7200
 F: 613 238-2005
 E: info@hobin.com
 hobin.com

PROJECT/LOCATION:
GLADSTONE & LORETTA RESIDENTIAL TOWER
 145 LORETTA AVE. NORTH

DRAWING TITLE:
SOUTH ELEVATION

DRAWN BY: DATE: SCALE:
 TD / JC OCT.2023 1:200

PROJECT: 1726
 DRAWING NO.: A3.03
 REVISION NO.: 001