

STAMP

32	2024.04.10	ISSUED FOR SH13r1
29	2024.03.25	ISSUED FOR SI21
25	2024.02.13	ISSUED FOR SH13
17	2023.12.10	ISSUED FOR SI06
13	2023.10.20	ISSUED FOR CONSTRUCTION
12	2023.10.12	ISSUED FOR REVIEW
10	2023.08.16	ISSUED FOR 75% REVIEW
5	2023.05.29	ISSUED FOR PERMIT
4	2023.04.14	ISSUED FOR 33% REVIEW

REV DATE ISSUE

NOTES

1. OWNERSHIP OF THE COPYRIGHT OF THE DESIGN AND THE WORKS EXECUTED FROM THE DESIGN REMAINS WITH CSV ARCHITECTS, AND MAY NOT BE REPRODUCED IN ANY FORM WITHOUT THE WRITTEN CONSENT OF CSV ARCHITECTS.
2. THE DRAWINGS, PRESENTATIONS AND SPECIFICATIONS AS INSTRUMENTS OF SERVICE ARE AND SHALL REMAIN THE PROPERTY OF CSV ARCHITECTS. THEY ARE NOT TO BE USED BY THE CLIENT ON OTHER PROJECTS OR ON EXTENSIONS TO THIS PROJECT WITHOUT THE WRITTEN CONSENT OF CSV ARCHITECTS.
3. THIS DRAWING IS TO BE READ IN CONJUNCTION WITH ALL OTHER PROJECT DRAWINGS AND SPECIFICATIONS.
4. DO NOT SCALE DRAWINGS. CONTRACTOR SHALL BE RESPONSIBLE TO VERIFY DIMENSIONS ON SITE.
5. ALL WORK SHALL BE IN ACCORDANCE WITH THE ONTARIO BUILDING CODE AND ALL SUPPLEMENTS AND APPLICABLE MUNICIPAL REGULATIONS.

CLIENT

AZURE

OTTAWA
ONTARIO, CANADA

PROJECT

**WINONA PH
DEVELOPMENT**

377 -381 WINONA AVE. OTTAWA,
ON

TITLE

**EXTERIOR
ELEVATIONS**

PROJECT NO: 2022-1290
DRAWN: IK / EF
APPROVED: RG
SCALE: 1 : 100
DATE PRINTED: 2024-04-29 2:55:46 PM

REV DRAWING NO.



2 EAST ELEVATION

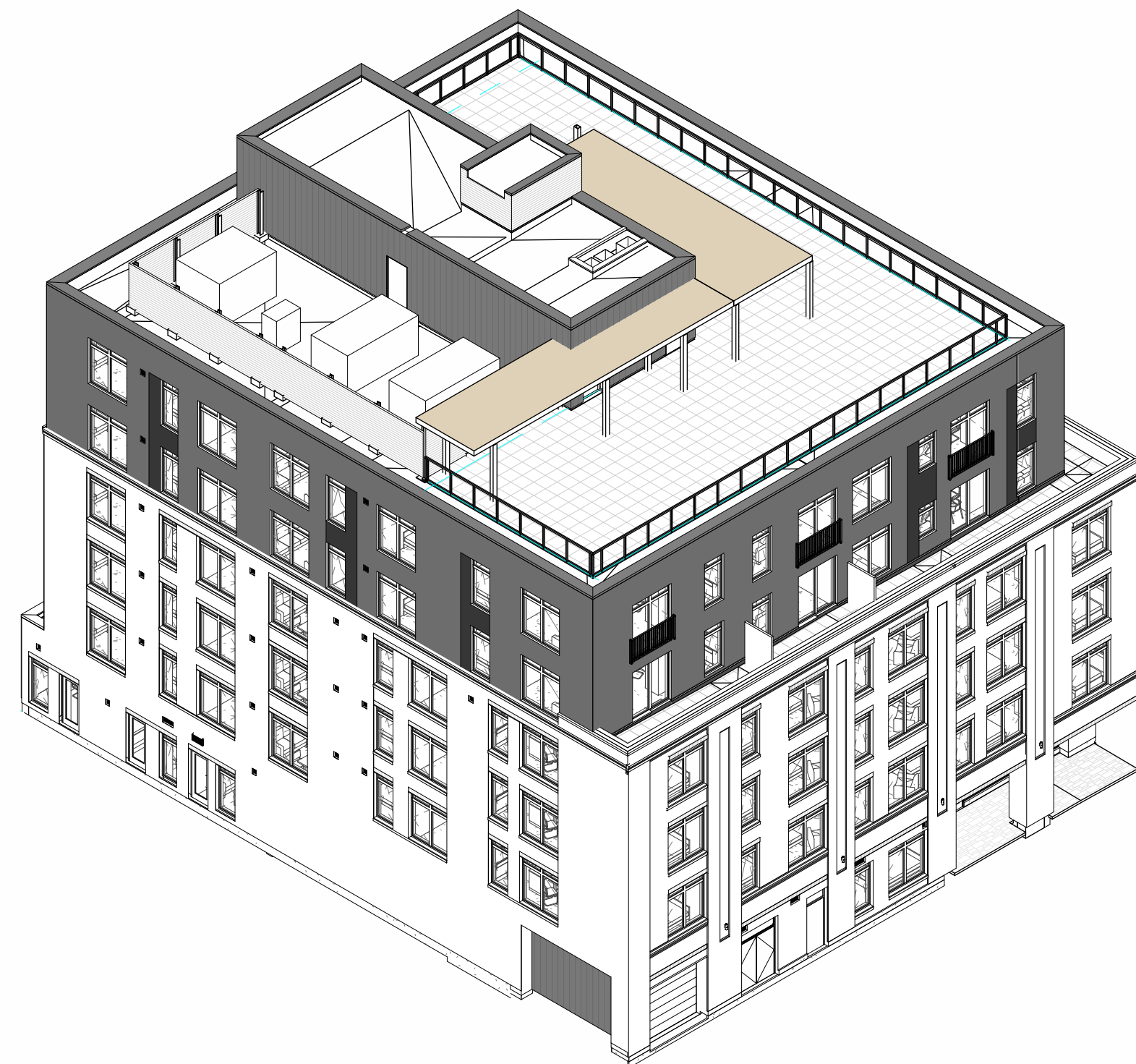
A300r2 1:100



1 NORTH ELEVATION

A300r2 1:100

PROPOSED CHANGES IN ROOFTOP AMMENITY SPACE:
EXISTING AMMENITY AREA: 315.5 m²
NEW AMMENITY AREA: 67.5 m²
TOTAL AMMENITY AREA: 383 m²



3 NORTHEAST CORNER VIEW

A300r2

EXTERIOR ELEVATIONS GENERAL NOTES:

- A. CONTRACTOR TO COORDINATE WITH MANUFACTURER'S SPECIFICATIONS AND INSTALLATIONS GUIDELINES FOR ALL MATERIAL SEALING, TRANSITIONS, SEPARATIONS, FLASHING DETAILS, CONNECTIONS, ANCHORAGES, ETC. CONTRACTOR TO PROVIDE DETAIL DRAWINGS OR MOCK-UP FOR ARCHITECT'S REVIEW AND APPROVAL FOR ALL SPECIAL CONDITIONS NOT SHOWN IN THE CONTRACT DOCUMENTS.

EXTERIOR ELEVATIONS KEYNOTES:

- 1 ALUMINUM & GLASS GUARD. TYPICAL
- 2 GARAGE DOOR
- 3 ROOFTOP TRELLIS
- 4 ROOFTOP MECHANICAL SCREEN
- 5 ELEVATOR OVERRUN
- 6 PRECAST WINDOW SILL. TYPICAL
- 7 STOREFRONT GLAZING. NO SPANDREL PANELS PROPOSED
- 8 PAINTED STEEL CANOPY. TYPICAL
- 9 GARBAGE ENCLOSURE
- 10 METAL CAP FLASHING OVER PRE-FABRICATED WOOD CAP
- 11 MASONRY CORNICE
- 12 BRICK SOLDIER COURSE. TYPICAL
- 13 METAL FLASHING
- 14 JULIETTE BALCONY GUARD WALL, MOUNTED.
- 15 ALUMINUM DIVIDER SECTION
- 16 MECHANICAL LOUVRE
- 17 LOCATION OF TRAFFIC SIGNAL
- 18 ROOF SCUPPER

EXTERIOR ELEVATION LEGEND:

HATCH PATTERNS SHOWN ARE FOR GRAPHIC PURPOSES ONLY AND SHOULD BE COORDINATED WITH ACTUAL SPECIFIED MATERIALS.

HATCH	SYMBOL	DESCRIPTION
	BR1	BRICK VENEER MANUFACTURER: COLOUR:
	AP1	ALUMINUM CASSETTE PANEL CLADDING 1 MANUFACTURER: ALUMICOR COLOUR: CHARCOAL
	AP2	ALUMINUM CASSETTE PANEL CLADDING 1 MANUFACTURER: ALUMICOR COLOUR: BLACK
	MP	PREFINISHED METAL SIDING PANEL MANUFACTURER: COLOUR: GREY
	L	MECHANICAL LOUVRE INTEGRATED INTO WINDOW FRAME
	SP	BACK-PAINTED SPANDREL PANEL

DIMENSION FROM FACE OF BRICK TO SURFACE OF SHEATHING/CONCRETE

STAMP

32	2024.04.10	ISSUED FOR SH13r1
25	2024.02.13	ISSUED FOR SH13
17	2023.12.10	ISSUED FOR SI06
16	2023.12.01	ISSUED FOR SI05
13	2023.10.20	ISSUED FOR CONSTRUCTION
12	2023.10.12	ISSUED FOR REVIEW
10	2023.08.16	ISSUED FOR 75% REVIEW
5	2023.05.29	ISSUED FOR PERMIT
4	2023.04.14	ISSUED FOR 33% REVIEW

REV DATE ISSUE

NOTES

1. OWNERSHIP OF THE COPYRIGHT OF THE DESIGN AND THE WORKS EXECUTED FROM THE DESIGN REMAINS WITH CSV ARCHITECTS, AND MAY NOT BE REPRODUCED IN ANY FORM WITHOUT THE WRITTEN CONSENT OF CSV ARCHITECTS.
2. THE DRAWINGS, PRESENTATIONS AND SPECIFICATIONS AS INSTRUMENTS OF SERVICE ARE AND SHALL REMAIN THE PROPERTY OF CSV ARCHITECTS. THEY ARE NOT TO BE USED BY THE CLIENT ON OTHER PROJECTS OR ON EXTENSIONS TO THIS PROJECT WITHOUT THE WRITTEN CONSENT OF CSV ARCHITECTS.
3. THIS DRAWING IS TO BE READ IN CONJUNCTION WITH ALL OTHER PROJECT DRAWINGS AND SPECIFICATIONS.
4. DO NOT SCALE DRAWINGS. CONTRACTOR SHALL BE RESPONSIBLE TO VERIFY DIMENSIONS ON SITE.
5. ALL WORK SHALL BE IN ACCORDANCE WITH THE ONTARIO BUILDING CODE AND ALL SUPPLEMENTS AND APPLICABLE MUNICIPAL REGULATIONS.

CLIENT

AZURE
OTTAWA
ONTARIO, CANADA

PROJECT

WINONA PH DEVELOPMENT

377 -381 WINONA AVE. OTTAWA, ON

TITLE

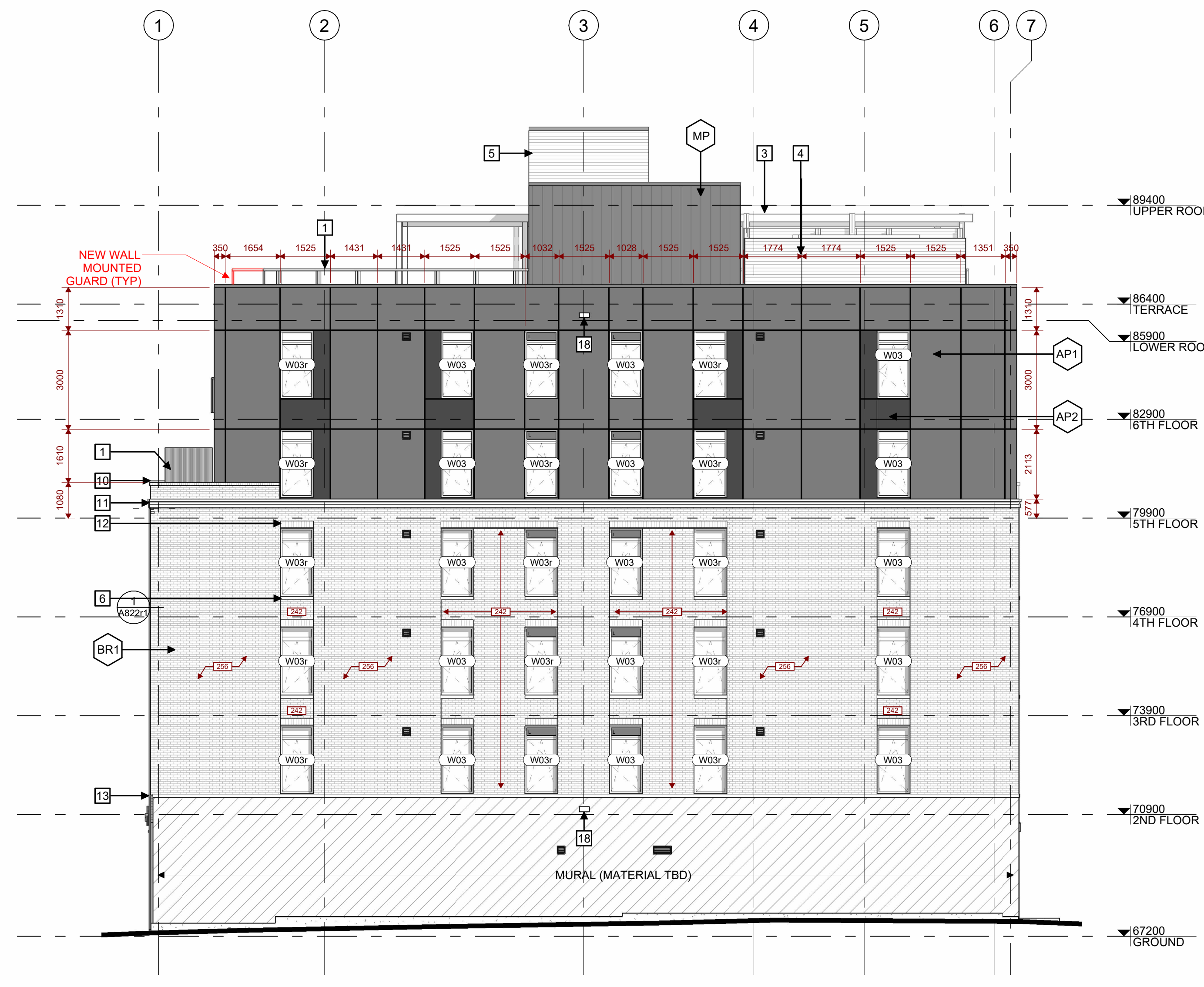
EXTERIOR ELEVATIONS

PROJECT NO: 2022-1290
DRAWN: IK / EF
APPROVED: RF
SCALE: 1 : 100
DATE PRINTED: 2024-04-29 2:55:57 PM

REV DRAWING NO.

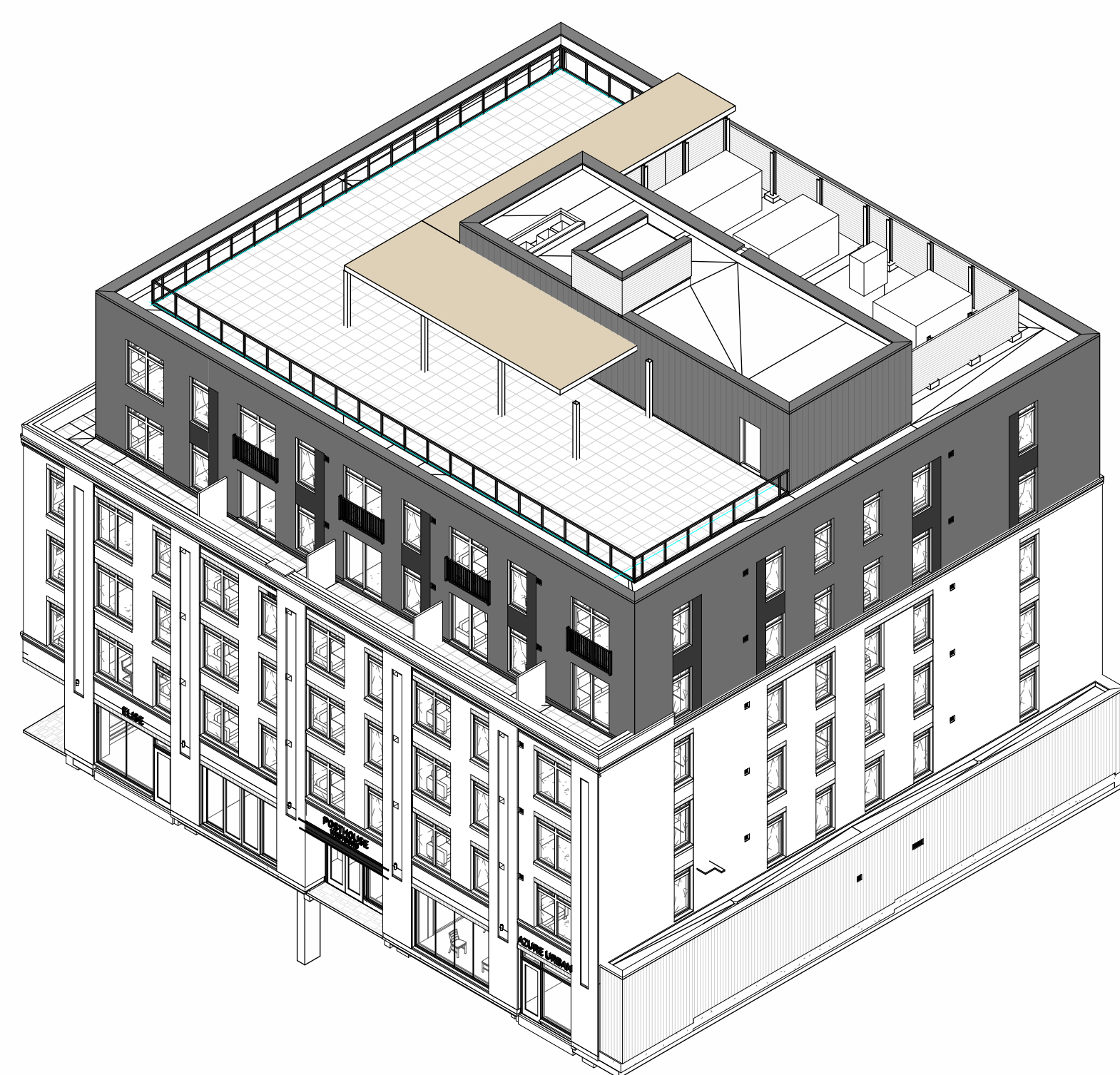


2 WEST ELEVATION
A301r2 1:100



1 SOUTH ELEVATION
A301r2 1:100

PROPOSED CHANGES IN ROOFTOP AMMENITY SPACE:
EXISTING AMMENITY AREA: 315.5 m²
NEW AMMENITY AREA: 67.5 m²
TOTAL AMMENITY AREA: 383 m²



3 SOUTHWEST CORNER VIEW
A301r2

EXTERIOR ELEVATIONS GENERAL NOTES:

- CONTRACTOR TO COORDINATE WITH MANUFACTURER'S SPECIFICATIONS AND INSTALLATIONS GUIDELINES FOR ALL MATERIAL SEALING, TRANSITIONS, SEPARATIONS, FLASHING DETAILS, CONNECTIONS, ANCHORAGES, ETC. CONTRACTOR TO PROVIDE DETAIL DRAWINGS OR MOCK-UP FOR ARCHITECT'S REVIEW AND APPROVAL FOR ALL SPECIAL CONDITIONS NOT SHOWN IN THE CONTRACT DOCUMENTS.

EXTERIOR ELEVATIONS KEYNOTES:

- ALUMINUM & GLASS GUARD. TYPICAL
- GARAGE DOOR
- ROOFTOP TRELLIS
- ROOFTOP MECHANICAL SCREEN
- ELEVATOR OVERRUN
- PRECAST WINDOW SILL. TYPICAL
- STOREFRONT GLAZING. NO SPANDREL PANELS PROPOSED
- PAINTED STEEL CANOPY. TYPICAL
- GARBAGE ENCLOSURE
- METAL CAP FLASHING OVER PRE-FABRICATED WOOD CAP
- MASONRY CORNICE
- BRICK SOLDIER COURSE. TYPICAL
- METAL FLASHING
- JULIETTE BALCONY GUARD WALL, MOUNTED.
- ALUMINUM DIVIDER SECTION
- MECHANICAL LOUVRE
- LOCATION OF TRAFFIC SIGNAL
- ROOF SCUPPER

EXTERIOR ELEVATION LEGEND:

HATCH PATTERNS SHOWN ARE FOR GRAPHIC PURPOSES ONLY AND SHOULD BE COORDINATED WITH ACTUAL SPECIFIED MATERIALS.

HATCH	SYMBOL	DESCRIPTION
[Hatch Pattern]	BR1	BRICK VENEER MANUFACTURER: COLOUR:
[Hatch Pattern]	AP1	ALUMINUM CASSETTE PANEL CLADDING 1 MANUFACTURER: ALUMICOR COLOUR: CHARCOAL
[Hatch Pattern]	AP2	ALUMINUM CASSETTE PANEL CLADDING 1 MANUFACTURER: ALUMICOR COLOUR: BLACK
[Hatch Pattern]	MP	PREFINISHED METAL SIDING PANEL MANUFACTURER: COLOUR: GREY
[Hatch Pattern]	L	MECHANICAL LOUVRE INTEGRATED INTO WINDOW FRAME
[Hatch Pattern]	SP	BACK-PAINTED SPANDREL PANEL

[Dimension Line] DIMENSION FROM FACE OF BRICK TO SURFACE OF SHEATHING/CONCRETE