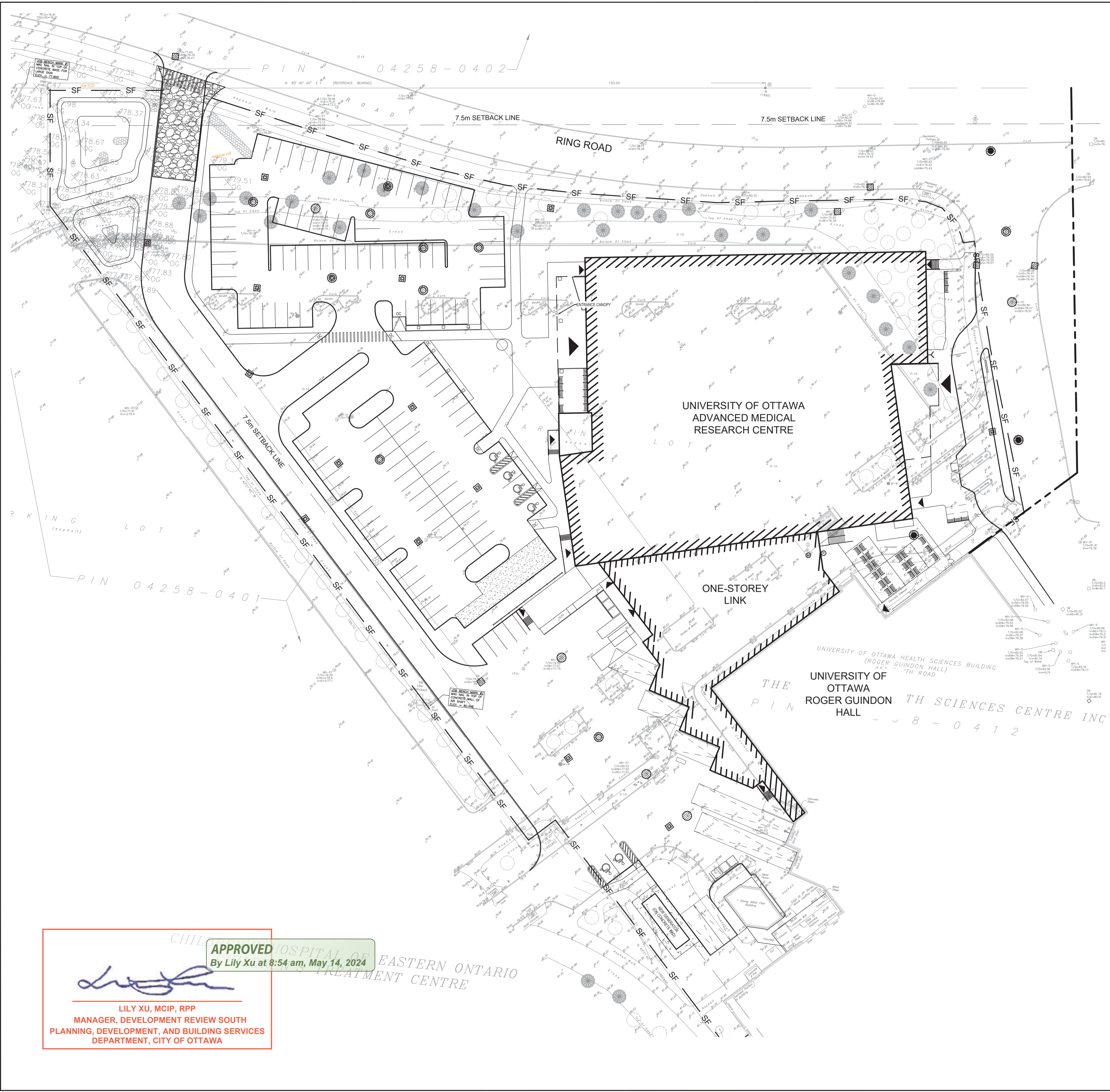
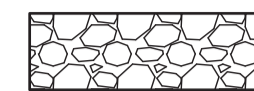



C:\Users\lilyxu\OneDrive\Desktop\10-13 May 2022\project\ca0009956_0165-ca_0412\working drawings\sheet\ca0009956_0165-ca_0412_mrc.dwg
 FILE: \\wsp-pwsm-mtl\casat\300\casat\10-13 May 2022\project\ca0009956_0165-ca_0412\working drawings\sheet\ca0009956_0165-ca_0412_mrc.dwg
 C:\Users\lilyxu\OneDrive\Desktop\10-13 May 2022\project\ca0009956_0165-ca_0412\working drawings\sheet\ca0009956_0165-ca_0412_mrc.dwg

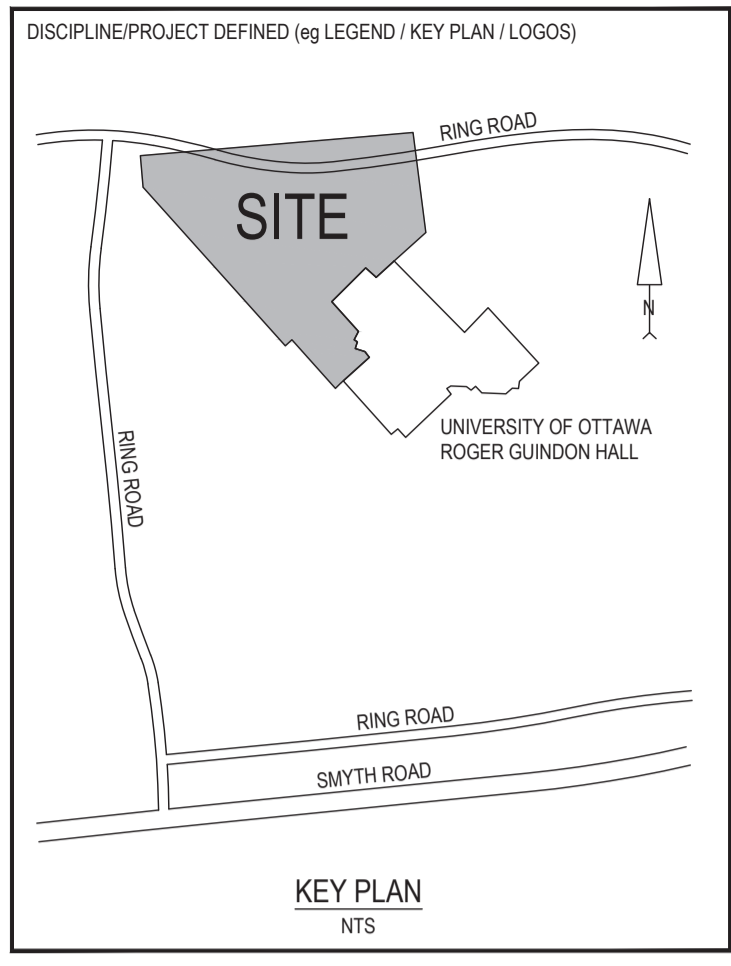


LEGEND: ESC

— SF — SF — SILT FENCE

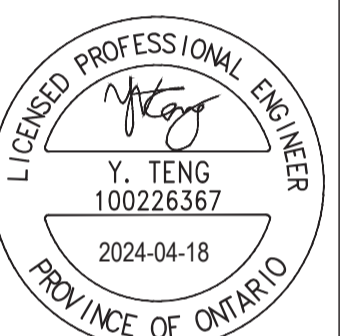
 MUD MAT

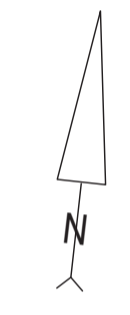
 SILT SACK



REVISION:

REV	DATE	DESCRIPTION	BY
7	2024-04-30	30% CONSTRUCTION DOCUMENT SUBMISSION	VT
6	2024-04-18	ISSUED FOR ZBLA AND SPC SUBMISSION	VT
5	2024-02-26	ISSUED FOR SITE PLAN APPROVAL	VT
4	2024-02-02	ISSUED FOR COORDINATION	VT
3	2023-11-30	ISSUED FOR SITE PLAN APPROVAL	VT
2	2023-11-20	ISSUED FOR BUILDING PERMIT	VT
1	2023-10-31	ISSUED FOR PRICING PROPOSAL	VT

SEAL: 

NORTH: 

DISCLAIMER: THIS DRAWING AND DESIGN IS COPYRIGHT PROTECTED WHICH SHALL NOT BE USED, REPRODUCED OR REVISED WITHOUT WRITTEN PERMISSION BY WSP. THE CONTRACTOR SHALL CHECK AND VERIFY ALL DIMENSIONS AND UTILITY LOCATIONS AND REPORT ALL ERRORS AND OMISSIONS PRIOR TO COMMENCING WORK.

ORIGINAL SCALE: AS NOTED DATE: 2023-09-25

DESIGNED BY: V. TENG IF THIS BAR IS NOT 25mm LONG, ADJUST YOUR PLOTTING SCALE.

DRAWN BY: B. NANDLAL

APPROVED BY: I. JAFFERJEE

DISCIPLINE: CIVIL

25mm

wsp

WSP CANADA INC.
2611 QUEENVIEW DRIVE, SUITE 300
OTTAWA ONTARIO K2B 8K2 CANADA
WSP.COM

PROJECT NUMBER: CA0009956.0165-CA

CLIENT:

CLIENT REF. #:


PROJECT: **ADVANCED MEDICAL RESEARCH CENTRE**

TITLE: **EROSION AND SEDIMENT CONTROL PLAN**

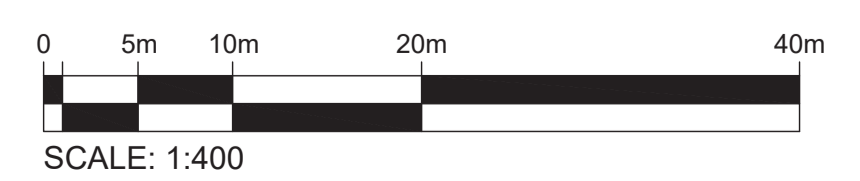
DRAWING NUMBER: **C109**

REV: **7**

APPROVED
By Lily Xu at 8:54 am, May 14, 2024



LILY XU, MCIP, RPP
MANAGER, DEVELOPMENT REVIEW SOUTH
PLANNING, DEVELOPMENT, AND BUILDING SERVICES
DEPARTMENT, CITY OF OTTAWA



File No. D07-12-24-0021 Plan No. 19104