

STORM STRUCTURE AND ICD DATA TABLE table with columns: STRUCTURE ID, AREA ID, SIZE, STRUCTURE, COVER, TOP OF GRATE, INLET, INVERT, OUTLET, DIAMETER, TYPE, HEAD, FLOW, ICD TYPE. Includes details for various storm structures like STMH1, CBMH5, etc.

Post Development Storm Drainage Area Table table with columns: Catchment Area, Total (ha), Grass, Gravel, Asphalt, Outlet Structure, Ponding Area (m2), Ponding Depth, Ponding Volume. Includes a Total row at the bottom.

SAN STRUCTURE TABLE table with columns: STRUCTURE ID, TOP OF GRATE ELEVATION, INVERT, DESCRIPTION, SIZE, OPSD, COVER. Lists structures SAMH100, SAMH101, SAMH102, SAMH103.

PIPE CROSSING TABLE table with columns: Invert, Obvert, Invert, Obvert, and various structural details for crossings 1 through 10.

WATERMAIN SCHEDULE table with columns: STATION, DESCRIPTION, FINISHED GRADE, TOP OF WATERMAIN, AS-BUILT WATERMAIN, COVER. Lists various watermain services and crossings.



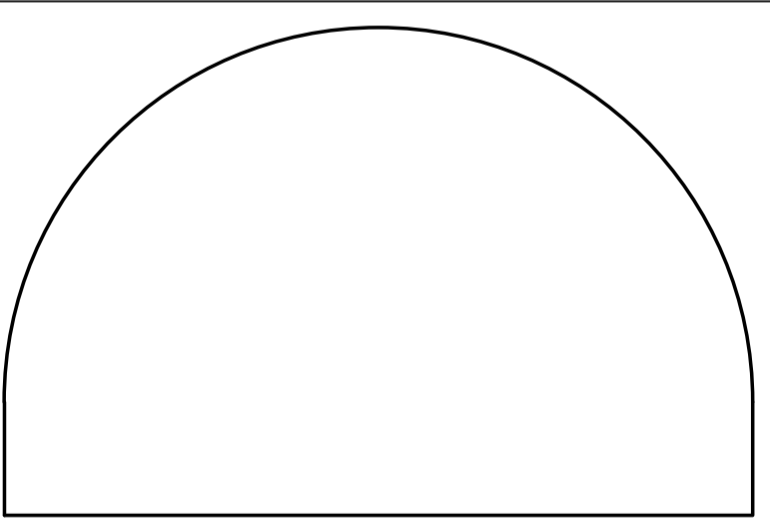
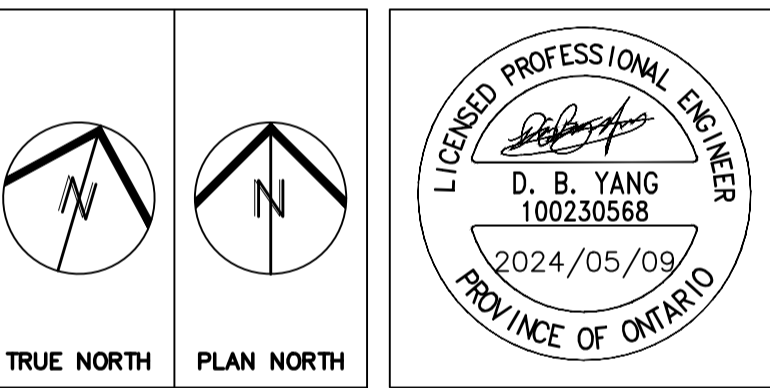
- Issue log entries including dates and descriptions: 2024/05/09 ISSUED FOR RESUBMISSION TO CITY AND ADDENDUM, 2024/04/23 ISSUED FOR TENDER, etc.

LES IDEES, CONCEPTS, DISPOSITIONS ET PLANS MONTRÉS OU REPRÉSENTÉS PAR CE DESSIN APPARTIENNENT À EDWARD J. CUHACI AND ASSOCIATES ARCHITECTS INC. ET ONT ÉTÉ CRÉÉS, ET DÉVELOPPÉS POUR ÊTRE UTILISÉS DANS LE CADRE DU PRÉSENT PROJET. ILS NE DOIVENT PAS ÊTRE UTILISÉS À D'AUTRES FINS NI COMMUNIQUÉS À QUI QUE CE SOIT SANS LA PERMISSION ÉCRITE DE EDWARD J. CUHACI AND ASSOCIATES ARCHITECTS INC.

ALL IDEAS, DESIGNS, ARRANGEMENTS, AND PLANS INDICATED OR REPRESENTED BY THIS DRAWING ARE OWNED BY AND THE PROPERTY OF EDWARD J. CUHACI AND ASSOCIATES INC. AND WERE CREATED, EVOLVED, AND DEVELOPED FOR USE ON AND IN CONNECTION WITH THE SPECIFIED PROJECT.

THE ARCHITECT WAIVES ANY AND ALL RESPONSIBILITY AND LIABILITY FOR PROBLEMS WHICH ARISE FROM FAILURE TO FOLLOW THESE PLANS, SPECIFICATIONS, AND THE DESIGN INTENT THEY CONVEY, OR FOR PROBLEMS WHICH ARISE FROM OTHERS' FAILURE TO OBTAIN AND/OR FOLLOW THE ARCHITECT'S GUIDANCE WITH RESPECT TO ANY ERRORS, OMISSIONS, INCONSISTENCIES, AMBIGUITIES OR CONFLICTS WHICH ARE ALLEGED.

CONTRACTOR TO VERIFY ALL DIMENSIONS AND NOTIFY THE ARCHITECT OF ANY DISCREPANCIES BEFORE WORK COMMENCES. DO NOT SCALE DRAWINGS



EDWARD J. CUHACI & ASSOCIATES ARCHITECTS Inc. 171 Slater St., Suite 100, Ottawa, Ontario, K1P 5H7. Fax: (613) 236-1944 Telephone: (613) 236-7135 E-mail: info@cuhaci.com

PROJECT TITLE/TITRE DU PROJET: ÉCOLE ÉLÉMENTAIRE PUBLIQUE ORLÉANS SUD 675 MONARDIA WAY OTTAWA, ONTARIO

DRAWING TITLE/TITRE DU DESSIN: SERVICING TABLES

SCALE, PROJ. No, ISSUE No, REV. No, DRAWN BY, CHECKED BY, DATE table with fields for project details and a large 'C02' stamp.



- 8 0 2024/05/09 ISSUED FOR RESUBMISSION TO CITY AND ADDENDUM
- 7 0 2024/04/23 ISSUED FOR TENDER
- 6 0 2024/01/17 ISSUED FOR SITE PLAN CONTROL
- 5 0 2023/11/24 ISSUED FOR SITE PLAN CONTROL
- 4 0 2023/11/17 ISSUED FOR COORDINATION
- 3 0 2023/09/28 ISSUED FOR BUILDING PERMIT

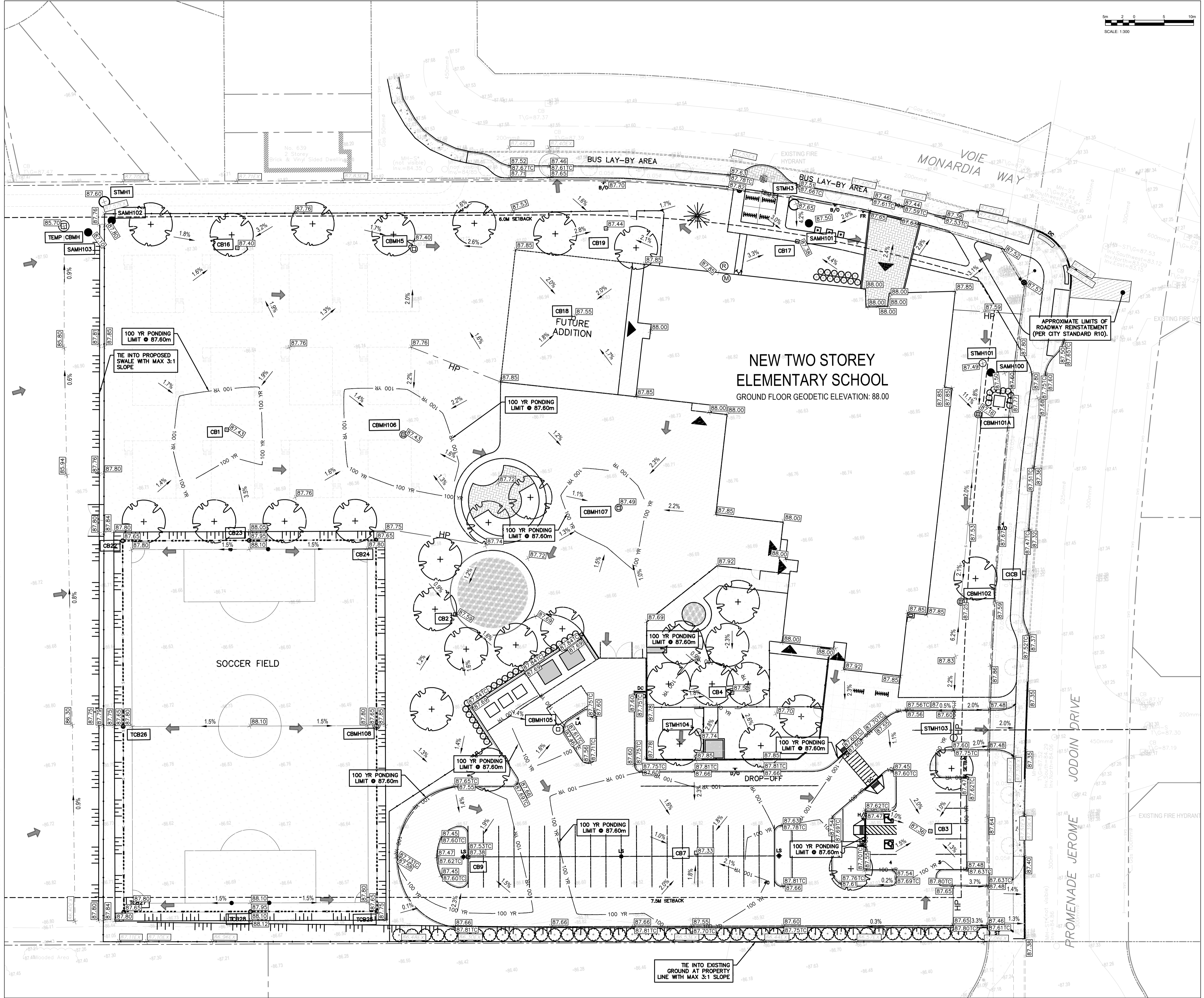
LES IDÉES, CONCEPTS, DÉSSINS ET PLANS MONTRÉS OU REPRÉSENTÉS PAR CE DESSIN APPARTIENNENT À EDWARD J. CUHACI AND ASSOCIATES ARCHITECTS INC. ET ONT ÉTÉ CRÉÉS, ET DÉVELOPPÉS POUR ÊTRE UTILISÉS DANS LE CADRE DU PRÉSENT PROJET. ILS NE DOIVENT PAS ÊTRE UTILISÉS À D'AUTRES FINS NI COMMUNIQUÉS À QUI QUE CE SOIT SANS LA PERMISSION ÉCRITE DE EDWARD J. CUHACI AND ASSOCIATES ARCHITECTS INC.

L'ARCHITECTE DÉCLINE TOUTE RESPONSABILITÉ DÉCOULANT DE PROBLÈMES FAISANT SUITE AU NON RESPECT DES PLANS ET DEVIS OU DE L'INTENTION DU CONCEPT QU'ILS TRANSMETTIENT, OU DE TOUTS PROBLÈMES POUVANT RÉSULTER DU DÉFAUT DE TIERS D'OBTENIR OU DE SUIVRE LES INSTRUCTIONS DE L'ARCHITECTE RELATIVEMENT AUX ERREURS, OMISSIONS, INCOHÉRENCES, AMBIGUITÉS OU CONTRADICTIONS ALLEGÉES.

ALL IDEAS, DESIGNS, ARRANGEMENTS, AND PLANS INDICATED OR REPRESENTED BY THIS DRAWING ARE OWNED BY AND THE PROPERTY OF EDWARD J. CUHACI AND ASSOCIATES INC. AND WERE CREATED, EVOLVED, AND DEVELOPED FOR USE ON AND IN CONNECTION WITH THE SPECIFIED PROJECT. NONE OF THE IDEAS, DESIGNS, ARRANGEMENTS OR PLANS SHALL BE USED OR DISCLOSED TO ANY PERSON, FIRM, OR CORPORATION FOR ANY PURPOSE WHATSOEVER WITHOUT THE WRITTEN PERMISSION OF EDWARD J. CUHACI AND ASSOCIATES INC.

THE ARCHITECT WAIVES ANY AND ALL RESPONSIBILITY AND LIABILITY FOR PROBLEMS WHICH ARISE FROM FAILURE TO FOLLOW THESE PLANS, SPECIFICATIONS, AND THE DESIGN INTENT THEY CONVEY, OR FOR PROBLEMS WHICH ARISE FROM OTHERS' FAILURE TO OBTAIN AND/OR FOLLOW THE ARCHITECT'S GUIDANCE WITH RESPECT TO ANY ERRORS, OMISSIONS, INCONSISTENCIES, AMBIGUITIES OR CONFLICTS WHICH ARE ALLEGED.

CONTRACTOR TO VERIFY ALL DIMENSIONS AND NOTIFY THE ARCHITECT OF ANY DISCREPANCIES BEFORE WORK COMMENCES. DO NOT SCALE DRAWINGS

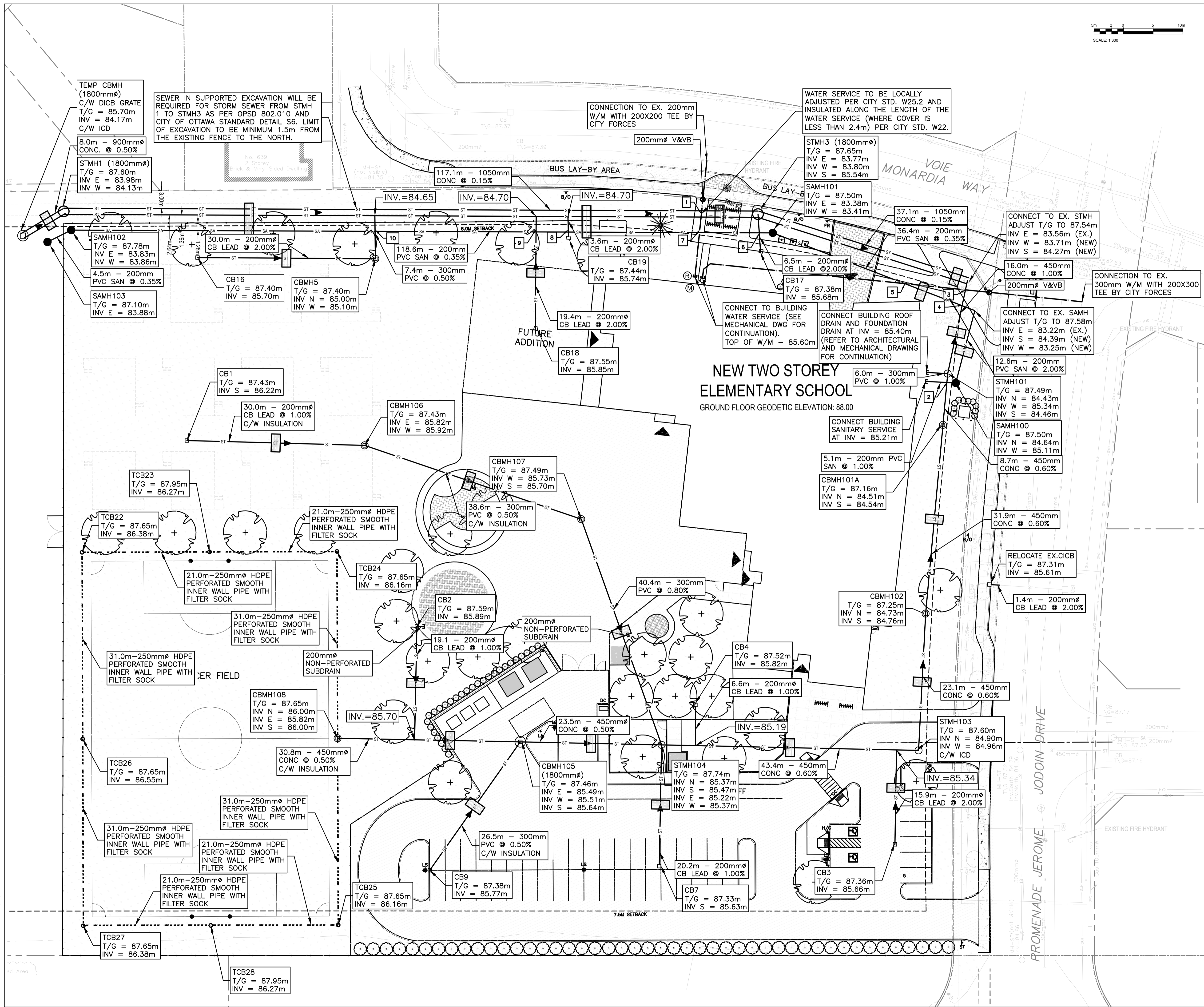


EDWARD J. CUHACI & ASSOCIATES ARCHITECTS Inc.
 171 Slater St, Suite 100, Ottawa, Ontario, K1P 5H7
 Fax: (613) 236-1944 Telephone: (613) 236-7135 E-mail: info@cuhaci.com

PROJECT TITLE/TITRE DU PROJET
ÉCOLE ÉLÉMENTAIRE PUBLIQUE ORLÉANS SUD
 675 MONARDIA WAY
 OTTAWA, ONTARIO

CONSEIL DES ÉCOLES PUBLIQUES DE L'EST DE L'ONTARIO
 2445 BOUL. ST-LAURENT, OTTAWA, ON

DRAWING TITLE/TITRE DU DESSIN			
GRADING PLAN			
SCALE ÉCHELLE	PROJ. No. 0003850-9668	ISSUE No. 8	REV. No. 0
DRAWN BY DESSINE PAR	ST-RVT	DRAWING/DESSIN	
CHECKED BY VÉRIFIÉ PAR	DY	C03	
DATE MAY 2024	ACAD FILE/FICHER: 0003850-9668 C01-8.dwg		



8	0	2024/05/09	ISSUED FOR RESUBMISSION TO CITY AND ADDENDUM
7	0	2024/04/23	ISSUED FOR TENDER
6	0	2024/01/17	ISSUED FOR SITE PLAN CONTROL
5	0	2023/11/24	ISSUED FOR SITE PLAN CONTROL
4	0	2023/11/17	ISSUED FOR COORDINATION
3	0	2023/09/28	ISSUED FOR BUILDING PERMIT

LES IDÉES, CONCEPTS, DISPOSITIONS ET PLANS MONTRÉS OU REPRÉSENTÉS PAR CE DESSIN APPARTIENNENT À EDWARD J. CUHACI AND ASSOCIATES ARCHITECTS INC. ET ONT ÉTÉ CRÉÉS, ET DÉVELOPPÉS POUR ÊTRE UTILISÉS DANS LE CADRE DU PRÉSENT PROJET. ILS NE DOIVENT PAS ÊTRE UTILISÉS À D'AUTRES FINS NI COMMUNIQUÉS À QUI QUE CE SOIT SANS LA PERMISSION ÉCRITE DE EDWARD J. CUHACI AND ASSOCIATES ARCHITECTS INC.

L'ARCHITECTE DÉCLINE TOUTE RESPONSABILITÉ DÉCOULANT DE PROBLÈMES FAISANT SUITE AU NON RESPECT DES PLANS ET DEVIS OU DE L'INTENTION DU CONCEPT QU'ILS TRANSMETTENT, OU DE TOUTES PROBLÈMES POUVANT RÉSULTER DU DÉFAUT DE TIERS D'OBTENIR OU DE SUIVRE LES INSTRUCTIONS DE L'ARCHITECTE RELATIVEMENT AUX ERREURS, OMISSIONS, INCOHÉRENCES, AMBIGUITÉS OU CONTRADICTIONS ALLEGUÉS.

L'ENTREPRENEUR DOIT VÉRIFIER TOUTES LES DIMENSIONS SUR PLACE ET INFORMER L'ARCHITECTE DE TOUT ÉCART AVANT LE DÉBUT DES TRAVAUX. NE PAS MESURER LES DESSINS À L'ÉCHELLE.

ALL IDEAS, DESIGNS, ARRANGEMENTS, AND PLANS INDICATED OR REPRESENTED BY THIS DRAWING ARE OWNED BY AND THE PROPERTY OF EDWARD J. CUHACI AND ASSOCIATES INC. AND WERE CREATED, EVOLVED, AND DEVELOPED FOR USE ON AND IN CONNECTION WITH THE SPECIFIED PROJECT. NONE OF THE IDEAS, DESIGNS, ARRANGEMENTS OR PLANS SHALL BE USED BY OR DISCLOSED TO ANY PERSON, FIRM, OR CORPORATION FOR ANY PURPOSE WHATSOEVER WITHOUT THE WRITTEN PERMISSION OF EDWARD J. CUHACI AND ASSOCIATES INC.

THE ARCHITECT WAIVES ANY AND ALL RESPONSIBILITY AND LIABILITY FOR PROBLEMS WHICH ARISE FROM FAILURE TO FOLLOW THESE PLANS, SPECIFICATIONS, AND THE DESIGN INTENT THEY CONVEY, OR FOR PROBLEMS WHICH ARISE FROM OTHERS' FAILURE TO OBTAIN AND/OR FOLLOW THE ARCHITECT'S GUIDANCE WITH RESPECT TO ANY ERRORS, OMISSIONS, INCONSISTENCIES, AMBIGUITIES OR CONFLICTS WHICH ARE ALLEGED.

CONTRACTOR TO VERIFY ALL DIMENSIONS AND NOTIFY THE ARCHITECT OF ANY DISCREPANCIES BEFORE WORK COMMENCES. DO NOT SCALE DRAWINGS

TRUE NORTH

PLAN NORTH

EDWARD J. CUHACI & ASSOCIATES ARCHITECTS Inc.
 171 Slater St, Suite 100, Ottawa, Ontario, K1P 5H7
 Fax: (613) 236-1944 Telephone: (613) 236-7135 E-mail: info@cuhaci.com

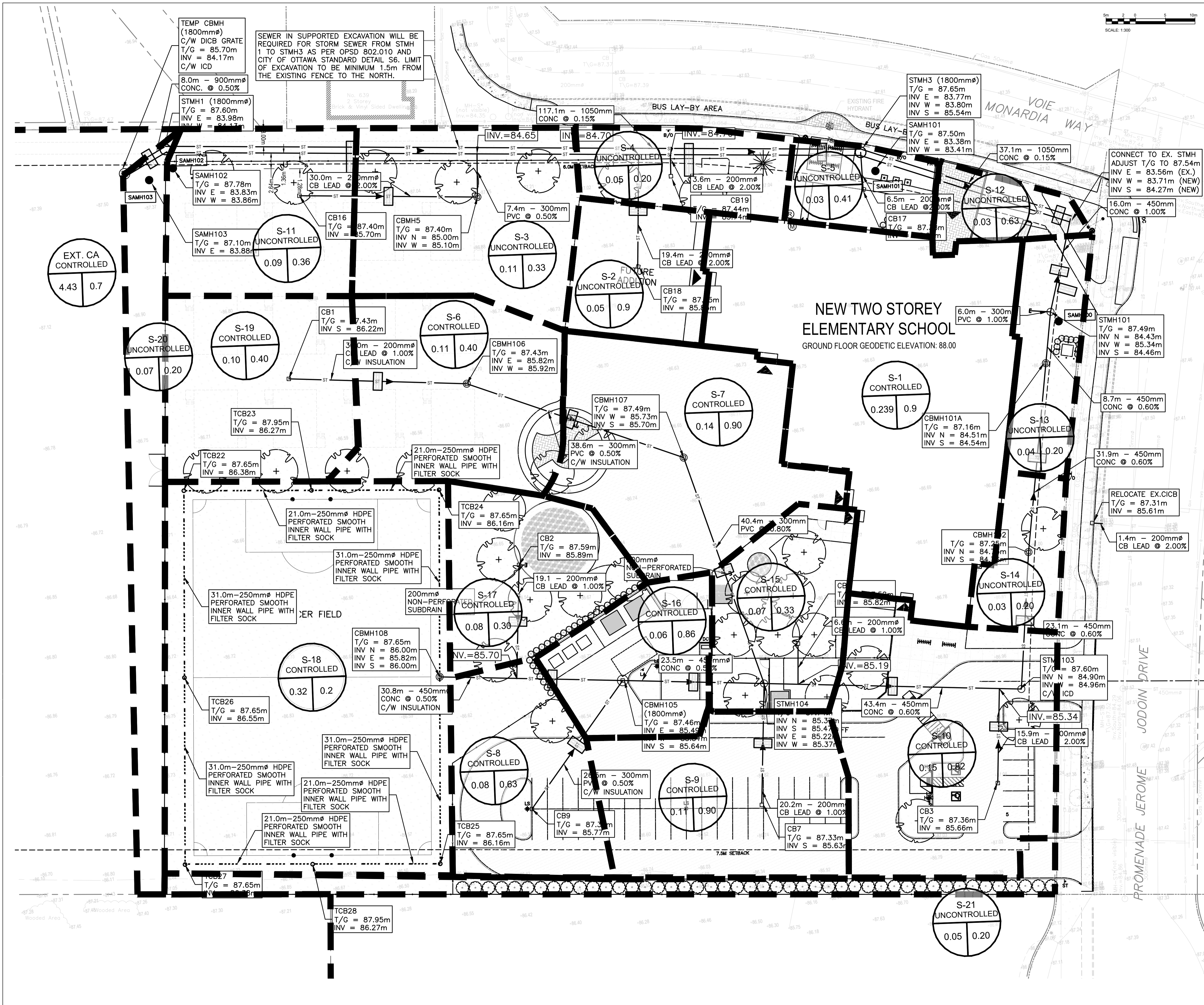
PROJECT TITLE/TITRE DU PROJET
ÉCOLE ÉLÉMENTAIRE PUBLIQUE ORLÉANS SUD
 675 MONARDRIA WAY
 OTTAWA, ONTARIO

CONSEIL DES ÉCOLES PUBLIQUES DE L'EST DE L'ONTARIO
 2445 BOUL. ST-LAURENT, OTTAWA, ON

DRAWING TITLE/TITRE DU DESSIN
SERVICING PLAN

SCALE	PROJ. No	ISSUE No	REV. No
ECHELLE	1:300	0003850-9668	8 0
DRAWN BY	DESIGNER	C04	
DESIGNED BY	ST-RVT		
CHECKED BY	DY		
DATE	MAY 2024		

D07-12-23-0102



- 8 0 2024/05/09 ISSUED FOR RESUBMISSION TO CITY AND ADDENDUM
- 7 0 2024/04/23 ISSUED FOR TENDER
- 6 0 2024/01/17 ISSUED FOR SITE PLAN CONTROL
- 5 0 2023/11/24 ISSUED FOR SITE PLAN CONTROL
- 4 0 2023/11/17 ISSUED FOR COORDINATION
- 3 0 2023/09/28 ISSUED FOR BUILDING PERMIT

LES IDÉES, CONCEPTS, DISPOSITIONS ET PLANS MONTRÉS OU REPRÉSENTÉS PAR CE DESSIN APPARTIENNENT À EDWARD J. CUHACI AND ASSOCIATES ARCHITECTS INC. ET ONT ÉTÉ CRÉÉS, ET DÉVELOPPÉS POUR ÊTRE UTILISÉS DANS LE CADRE DU PRÉSENT PROJET. ILS NE DOIVENT PAS ÊTRE UTILISÉS À D'AUTRES FINS NI COMMUNIQUÉS À QUI QUE CE SOIT SANS LA PERMISSION ÉCRITE DE EDWARD J. CUHACI AND ASSOCIATES ARCHITECTS INC.

L'ARCHITECTE DÉCLINE TOUTE RESPONSABILITÉ DÉCOULANT DE PROBLÈMES FAISANT SUITE AU NON RESPECT DES PLANS ET DEVIS OU DE L'INTENTION DU CONCEPT QU'ILS TRANSMETTENT, OU DE TOUTES PROBLÈMES POUVANT RÉSULTER DU DÉFAUT DE TIERS D'OBTENIR OU DE SUIVRE LES INSTRUCTIONS DE L'ARCHITECTE RELATIVEMENT AUX ERREURS, OMISSIONS, INCOHÉRENCES, AMBIGUITÉS OU CONTRADICTIONS ALLEGÉES.

L'ENTREPRENEUR DOIT VÉRIFIER TOUTES LES DIMENSIONS SUR PLACE ET INFORMER L'ARCHITECTE DE TOUT ÉCART AVANT LE DÉBUT DES TRAVAUX. NE PAS MESURER LES DESSINS À L'ÉCHELLE.

ALL IDEAS, DESIGNS, ARRANGEMENTS, AND PLANS INDICATED OR REPRESENTED BY THIS DRAWING ARE OWNED BY AND THE PROPERTY OF EDWARD J. CUHACI AND ASSOCIATES INC. AND WERE CREATED, EVOLVED, AND DEVELOPED FOR USE ON AND IN CONNECTION WITH THE SPECIFIED PROJECT. NONE OF THE IDEAS, DESIGNS, ARRANGEMENTS OR PLANS SHALL BE USED BY OR DISCLOSED TO ANY PERSON, FIRM, OR CORPORATION FOR ANY PURPOSE WHATSOEVER WITHOUT THE WRITTEN PERMISSION OF EDWARD J. CUHACI AND ASSOCIATES INC.

THE ARCHITECT WAIVES ANY AND ALL RESPONSIBILITY AND LIABILITY FOR PROBLEMS WHICH ARISE FROM FAILURE TO FOLLOW THESE PLANS, SPECIFICATIONS, AND THE DESIGN INTENT THEY CONVEY, OR FOR PROBLEMS WHICH ARISE FROM OTHERS' FAILURE TO OBTAIN AND/OR FOLLOW THE ARCHITECT'S GUIDANCE WITH RESPECT TO ANY ERRORS, OMISSIONS, INCONSISTENCIES, AMBIGUITIES OR CONFLICTS WHICH ARE ALLEGED.

CONTRACTOR TO VERIFY ALL DIMENSIONS AND NOTIFY THE ARCHITECT OF ANY DISCREPANCIES BEFORE WORK COMMENCES. DO NOT SCALE DRAWINGS

TRUE NORTH PLAN NORTH

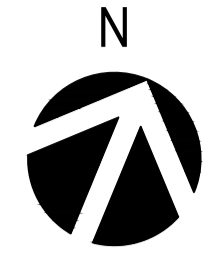
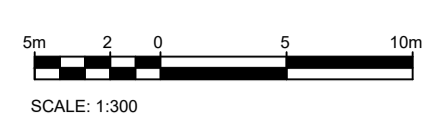
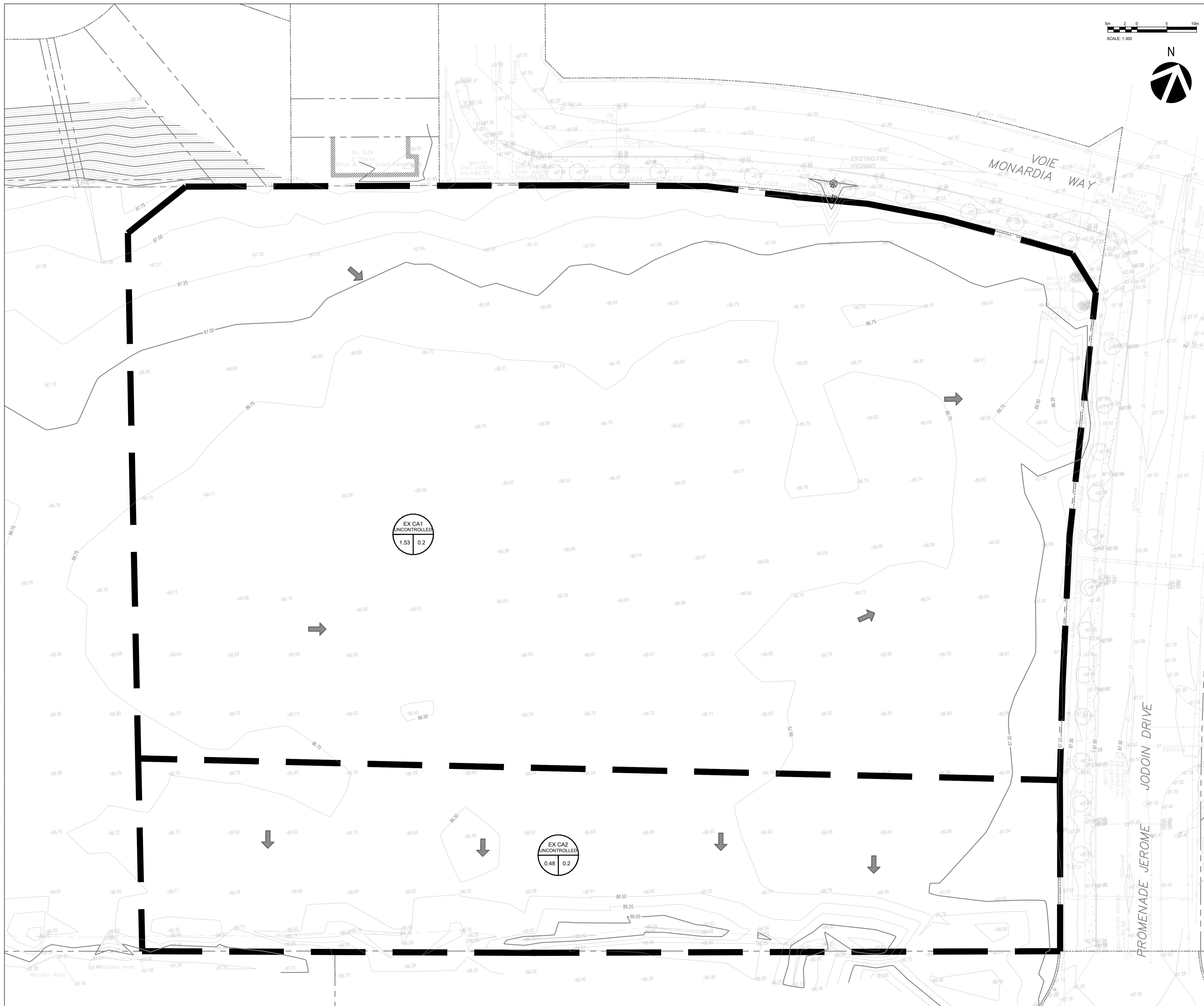
EDWARD J. CUHACI & ASSOCIATES ARCHITECTS Inc.
 171 Slater St, Suite 100, Ottawa, Ontario, K1P 5H7
 Fax: (613) 236-1944 Telephone: (613) 236-7135 E-mail: info@cuhaci.com

PROJECT TITLE/TITRE DU PROJET
 ÉCOLE ÉLÉMENTAIRE PUBLIQUE ORLÉANS SUD
 675 MONARDIA WAY
 OTTAWA, ONTARIO

CONSEIL DES ÉCOLES PUBLIQUES DE L'EST DE L'ONTARIO
 2445 BOUL. ST-LAURENT, OTTAWA, ON

DRAWING TITLE/TITRE DU DESSIN
STORM DRAINAGE AREA PLAN

SCALE ECHELLE	1:300	PROJ. No. 0003850-9668	ISSUE No. 8	REV. No. 0
DRAWN BY DESSINE PAR	ST-RVT	DRAWING/DESSIN		
CHECKED BY VÉRIFIÉ PAR	DY	C05		
DATE	MAY 2024	ACAD FILE/FICHIER: 0003850-9668 C01-8.dwg		



- 8 0 2024/05/09 ISSUED FOR RESUBMISSION TO CITY AND ADDENDUM
- 7 0 2024/04/23 ISSUED FOR TENDER
- 6 0 2024/01/17 ISSUED FOR SITE PLAN CONTROL
- 5 0 2023/11/24 ISSUED FOR SITE PLAN CONTROL
- 4 0 2023/11/17 ISSUED FOR COORDINATION
- 3 0 2023/09/28 ISSUED FOR BUILDING PERMIT

ISSUE NO.	REV. NO.	DATE	ISSUE

LES IDÉES, CONCEPTS, DISPOSITIONS ET PLANS MONTRÉS OU REPRÉSENTÉS PAR CE DESSIN APPARTIENNENT À EDWARD J. CUHACI AND ASSOCIATES ARCHITECTS INC. ET ONT ÉTÉ CRÉÉS, ET DÉVELOPPÉS POUR ÊTRE UTILISÉS DANS LE CADRE DU PRÉSENT PROJET. ILS NE DOIVENT PAS ÊTRE UTILISÉS À D'AUTRES FINS NI COMMUNIQUÉS À QUI QUE CE SOIT SANS LA PERMISSION ÉCRITE DE EDWARD J. CUHACI AND ASSOCIATES ARCHITECTS INC.

L'ARCHITECTE DÉCLINE TOUTE RESPONSABILITÉ DÉCOULANT DE PROBLÈMES FAISANT SUITE AU NON RESPECT DES PLANS ET DEVIS OU DE L'INTENTION DU CONCEPT QU'ILS TRANSMETTENT, OU DE TOUTS PROBLÈMES POUVANT RÉSULTER DU DÉFAUT DE TIERS D'OBTENIR OU DE SUIVRE LES INSTRUCTIONS DE L'ARCHITECTE RELATIVEMENT AUX ERREURS, OMISSIONS, INCOHÉRENCES, AMBIGUITÉS OU CONTRADICTIONS ALLEGUÉS.

L'ENTREPRENEUR DOIT VÉRIFIER TOUTES LES DIMENSIONS SUR PLACE ET INFORMER L'ARCHITECTE DE TOUT ÉCART AVANT LE DÉBUT DES TRAVAUX. NE PAS MESURER LES DESSINS À L'ÉCHELLE.

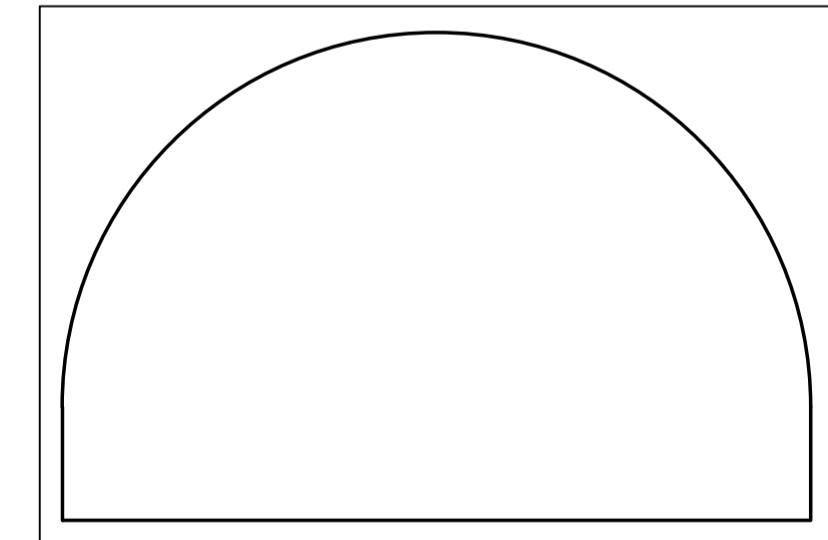
ALL IDEAS, DESIGNS, ARRANGEMENTS, AND PLANS INDICATED OR REPRESENTED BY THIS DRAWING ARE OWNED BY AND THE PROPERTY OF EDWARD J. CUHACI AND ASSOCIATES INC. AND WERE CREATED, EVOLVED, AND DEVELOPED FOR USE ON AND IN CONNECTION WITH THE SPECIFIED PROJECT. NONE OF THE IDEAS, DESIGNS, ARRANGEMENTS OR PLANS SHALL BE USED BY OR DISCLOSED TO ANY PERSON, FIRM, OR CORPORATION FOR ANY PURPOSE WHATSOEVER WITHOUT THE WRITTEN PERMISSION OF EDWARD J. CUHACI AND ASSOCIATES INC.

THE ARCHITECT WAIVES ANY AND ALL RESPONSIBILITY AND LIABILITY FOR PROBLEMS WHICH ARISE FROM FAILURE TO FOLLOW THESE PLANS, SPECIFICATIONS, AND THE DESIGN INTENT THEY CONVEY, OR FOR PROBLEMS WHICH ARISE FROM OTHERS' FAILURE TO OBTAIN AND/OR FOLLOW THE ARCHITECT'S GUIDANCE WITH RESPECT TO ANY ERRORS, OMISSIONS, INCONSISTENCIES, AMBIGUITIES OR CONFLICTS WHICH ARE ALLEGED.

CONTRACTOR TO VERIFY ALL DIMENSIONS AND NOTIFY THE ARCHITECT OF ANY DISCREPANCIES BEFORE WORK COMMENCES. DO NOT SCALE DRAWINGS

TRUE NORTH

PLAN NORTH



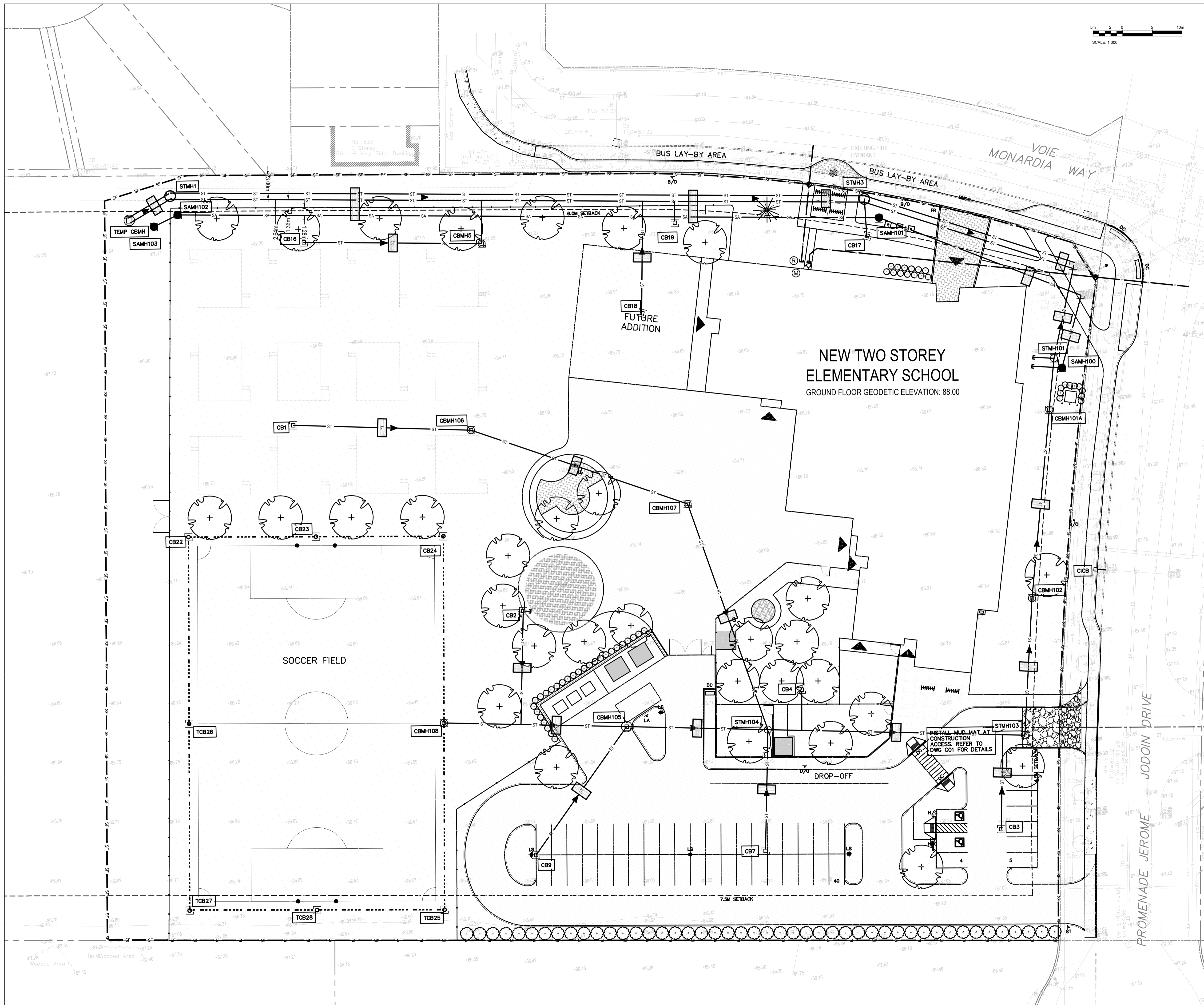
EDWARD J. CUHACI & ASSOCIATES ARCHITECTS Inc.
 171 Slater St, Suite 100, Ottawa, Ontario, K1P 5H7
 Fax: (613) 236-1944 Telephone: (613) 236-7135 E-mail: info@cuhaci.com

PROJECT TITLE/TITRE DU PROJET
ÉCOLE ÉLÉMENTAIRE PUBLIQUE ORLÉANS SUD
 675 MONARDIE WAY
 OTTAWA, ONTARIO

CONSEIL DES ÉCOLES PUBLIQUES DE L'EST DE L'ONTARIO
 2445 BOUL. ST-LAURENT, OTTAWA, ON

DRAWING TITLE/TITRE DU DESSIN
PRE-DEVELOPMENT DRAINAGE AREA PLAN

SCALE ECHELLE	1:300	PROJ. No. 0003850-9668	ISSUE No. 8	REV. No. 0
DRAWN BY DESSINE PAR	ST-RVT	DRAWING/DESSIN		
CHECKED BY VÉRIFIÉ PAR	DY	C06		
DATE	MAY 2024	ACAD FILE/FICHIER: 0003850-9668 C01-8.dwg		



- 8 0 2024/05/09 ISSUED FOR RESUBMISSION TO CITY AND ADDENDUM
- 7 0 2024/04/23 ISSUED FOR TENDER
- 6 0 2024/01/17 ISSUED FOR SITE PLAN CONTROL
- 5 0 2023/11/24 ISSUED FOR SITE PLAN CONTROL
- 4 0 2023/11/17 ISSUED FOR COORDINATION
- 3 0 2023/09/28 ISSUED FOR BUILDING PERMIT

ISSUE NO.	REV.	DATE	ISSUE
8	0	2024/05/09	ISSUED FOR RESUBMISSION TO CITY AND ADDENDUM
7	0	2024/04/23	ISSUED FOR TENDER
6	0	2024/01/17	ISSUED FOR SITE PLAN CONTROL
5	0	2023/11/24	ISSUED FOR SITE PLAN CONTROL
4	0	2023/11/17	ISSUED FOR COORDINATION
3	0	2023/09/28	ISSUED FOR BUILDING PERMIT

LES IDÉES, CONCEPTS, DISPOSITIONS ET PLANS MONTRÉS OU REPRÉSENTÉS PAR CE DESSIN APPARTIENNENT À EDWARD J. CUHACI AND ASSOCIATES ARCHITECTS INC. ET ONT ÉTÉ CRÉÉS, ET DÉVELOPPÉS POUR ÊTRE UTILISÉS DANS LE CADRE DU PRÉSENT PROJET. ILS NE DOIVENT PAS ÊTRE UTILISÉS À D'AUTRES FINS NI COMMUNIQUÉS À QUI QUE CE SOIT SANS LA PERMISSION ÉCRITE DE EDWARD J. CUHACI AND ASSOCIATES ARCHITECTS INC.

L'ARCHITECTE DÉCLINE TOUTE RESPONSABILITÉ DÉCOULANT DE PROBLÈMES FAISANT SUITE AU NON RESPECT DES PLANS ET DEVIS OU DE L'INTENTION DU CONCEPT QU'ILS TRANSMETTENT, OU DE TOUTS PROBLÈMES POUVANT RÉSULTER DU DÉFAUT DE TIERS D'OBTENIR OU DE SUIVRE LES INSTRUCTIONS DE L'ARCHITECTE RELATIVEMENT AUX ERREURS, OMISSIONS, INCOHÉRENCES, AMBIGUITÉS OU CONTRADICTIONS ALLEGUÉS.

L'ENTREPRENEUR DOIT VÉRIFIER TOUTES LES DIMENSIONS SUR PLACE ET INFORMER L'ARCHITECTE DE TOUT ÉCART AVANT LE DÉBUT DES TRAVAUX. NE PAS MESURER LES DESSINS À L'ÉCHELLE.

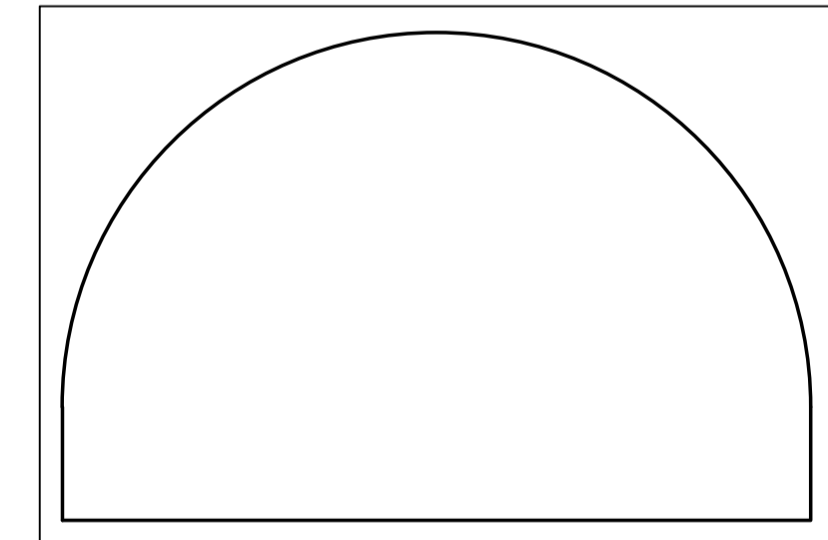
ALL IDEAS, DESIGNS, ARRANGEMENTS, AND PLANS INDICATED OR REPRESENTED BY THIS DRAWING ARE OWNED BY AND THE PROPERTY OF EDWARD J. CUHACI AND ASSOCIATES INC. AND WERE CREATED, EVOLVED, AND DEVELOPED FOR USE AND IN CONNECTION WITH THE SPECIFIED PROJECT. NONE OF THE IDEAS, DESIGNS, ARRANGEMENTS OR PLANS SHALL BE USED BY OR DISCLOSED TO ANY PERSON, FIRM, OR CORPORATION FOR ANY PURPOSE WHATSOEVER WITHOUT THE WRITTEN PERMISSION OF EDWARD J. CUHACI AND ASSOCIATES INC.

THE ARCHITECT WAIVES ANY AND ALL RESPONSIBILITY AND LIABILITY FOR PROBLEMS WHICH ARISE FROM FAILURE TO FOLLOW THESE PLANS, SPECIFICATIONS, AND THE DESIGN INTENT THEY CONVEY, OR FOR PROBLEMS WHICH ARISE FROM OTHERS' FAILURE TO OBTAIN AND/OR FOLLOW THE ARCHITECT'S GUIDANCE WITH RESPECT TO ANY ERRORS, OMISSIONS, INCONSISTENCIES, AMBIGUITIES OR CONFLICTS WHICH ARE ALLEGED.

CONTRACTOR TO VERIFY ALL DIMENSIONS AND NOTIFY THE ARCHITECT OF ANY DISCREPANCIES BEFORE WORK COMMENCES. DO NOT SCALE DRAWINGS

TRUE NORTH PLAN NORTH

LICENCED PROFESSIONAL ENGINEER
D. B. YANG
100230568
2024/05/09
PROVINCE OF ONTARIO



EDWARD J. CUHACI & ASSOCIATES ARCHITECTS Inc.
171 Slater St, Suite 100, Ottawa, Ontario, K1P 5H7
Fax: (613) 236-1944 Telephone: (613) 236-7135 E-mail: info@cuhaci.com

PROJECT TITLE/TITRE DU PROJET
ÉCOLE ÉLÉMENTAIRE PUBLIQUE ORLÉANS SUD
675 MONARDIA WAY
OTTAWA, ONTARIO

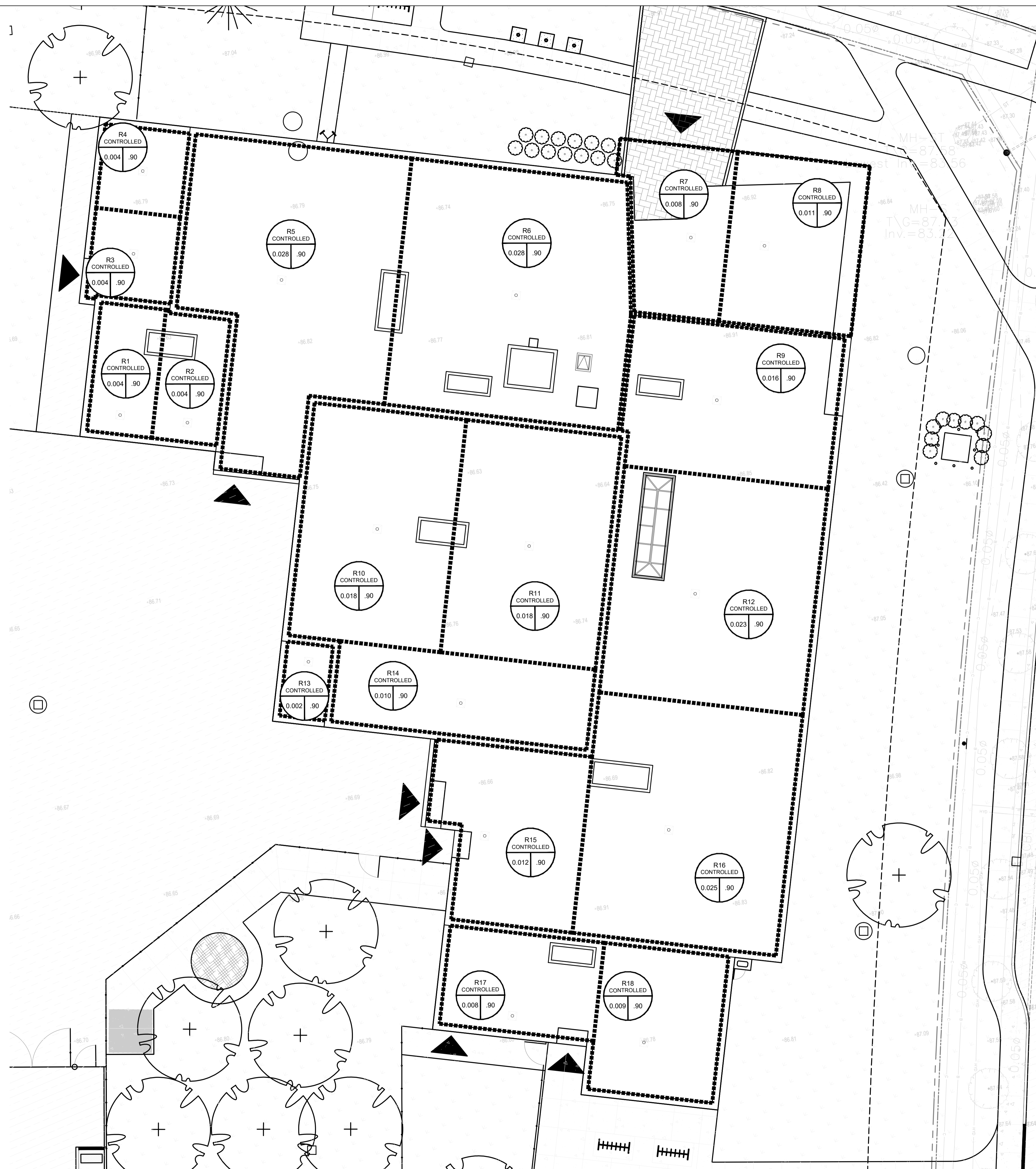
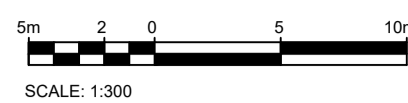
CONSEIL DES ÉCOLES PUBLIQUES DE L'EST DE L'ONTARIO
2445 BOUL. ST-LAURENT, OTTAWA, ON

DRAWING TITLE/TITRE DU DESSIN
EROSION AND SEDIMENT CONTROL PLAN

SCALE ECHELLE	1:300	PROJ. No. 0003850-9668	ISSUE No. 8	REV. No. 0
DRAWN BY DESSINE PAR	ST-RVT	DRAWING/DESSIN		
CHECKED BY VÉRIFIÉ PAR	DY	C07		
DATE	MAY 2024	ACAD FILE/FICHER: 0003850-9668 C01-8.dwg		

Roof Drain	Area (m ²)	Depth (m)	Theoretical Rooftop Storage Volume (m ³)	Storage Volume (m ³)	Max Flow Rate (L/s)
1	41.6	0.05	0.7	0.6	0.32
2	40.7	0.05	0.7	0.5	0.32
3	36.6	0.06	0.7	0.6	0.66
4	35.3	0.06	0.7	0.6	0.66
5	276.6	0.15	13.8	11.1	0.95
6	282.0	0.15	14.1	11.3	0.95
7	84.2	0.11	3.1	2.5	0.82
8	112.3	0.11	4.1	3.3	0.82
9	157.0	0.15	7.9	6.3	0.95
10	177.0	0.15	8.9	7.1	0.95
11	180.5	0.15	9.0	7.2	0.95
12	230.8	0.15	11.5	9.2	0.95
13	16.8	0.075	0.4	0.3	0.71
14	102.8	0.15	5.1	4.1	0.95
15	120.6	0.14	5.6	4.5	0.91
16	245.3	0.15	12.3	9.8	0.95
17	75.8	0.11	2.8	2.2	0.82
18	91.0	0.13	3.9	3.2	0.88
Total	2306.9			84.3	14.52

ROOF DRAIN PER WATTS ADJUSTABLE FLOW CONTROL FOR ROOF DRAINS OR APPROVED EQUIVALENT.



- 8 0 2024/05/09 ISSUED FOR RESUBMISSION TO CITY AND ADDENDUM
- 7 0 2024/04/23 ISSUED FOR TENDER
- 6 0 2024/01/17 ISSUED FOR SITE PLAN CONTROL
- 5 0 2023/11/24 ISSUED FOR SITE PLAN CONTROL
- 4 0 2023/11/17 ISSUED FOR COORDINATION
- 3 0 2023/09/28 ISSUED FOR BUILDING PERMIT

ISSUE NO.	REV.	DATE	ISSUE

LES IDÉES, CONCEPTS, DISPOSITIONS ET PLANS MONTRÉS OU REPRÉSENTÉS PAR CE DESSIN APPARTIENNENT À EDWARD J. CUHACI AND ASSOCIATES ARCHITECTS INC. ET ONT ÉTÉ CRÉÉS, DÉVELOPPÉS POUR ÊTRE UTILISÉS DANS LE CADRE DU PRÉSENT PROJET. ILS NE DOIVENT PAS ÊTRE UTILISÉS À D'AUTRES FINS NI COMMUNIQUÉS À QUI QUE CE SOIT SANS LA PERMISSION ÉCRITE DE EDWARD J. CUHACI AND ASSOCIATES ARCHITECTS INC.

L'ARCHITECTE DÉCLINE TOUTE RESPONSABILITÉ DÉCOULANT DE PROBLÈMES FAISANT SUITE AU NON RESPECT DES PLANS ET DEVIS OU DE L'INTENTION DU CONCEPT QU'ILS TRANSMETTENT, OU DE TOUTS PROBLÈMES POUVANT RÉSULTER DU DÉFAUT DE TIERS D'OBTENIR OU DE SUIVRE LES INSTRUCTIONS DE L'ARCHITECTE RELATIVEMENT AUX ERREURS, OMISSIONS, INCOHÉRENCES, AMBIGUITÉS OU CONTRADICTIONS ALLEGUÉS.

L'ENTREPRENEUR DOIT VÉRIFIER TOUTES LES DIMENSIONS SUR PLACE ET INFORMER L'ARCHITECTE DE TOUT ÉCART AVANT LE DÉBUT DES TRAVAUX. NE PAS MESURER LES DESSINS À L'ÉCHELLE.

ALL IDEAS, DESIGNS, ARRANGEMENTS, AND PLANS INDICATED OR REPRESENTED BY THIS DRAWING ARE OWNED BY AND THE PROPERTY OF EDWARD J. CUHACI AND ASSOCIATES INC. AND WERE CREATED, EVOLVED, AND DEVELOPED FOR USE ON AND IN CONNECTION WITH THE SPECIFIED PROJECT. NONE OF THE IDEAS, DESIGNS, ARRANGEMENTS OR PLANS SHALL BE USED BY OR DISCLOSED TO ANY PERSON, FIRM, OR CORPORATION FOR ANY PURPOSE WHATSOEVER WITHOUT THE WRITTEN PERMISSION OF EDWARD J. CUHACI AND ASSOCIATES INC.

THE ARCHITECT WAIVES ANY AND ALL RESPONSIBILITY AND LIABILITY FOR PROBLEMS WHICH ARISE FROM FAILURE TO FOLLOW THESE PLANS, SPECIFICATIONS, AND THE DESIGN INTENT THEY CONVEY, OR FOR PROBLEMS WHICH ARISE FROM OTHERS' FAILURE TO OBTAIN AND/OR FOLLOW THE ARCHITECT'S GUIDANCE WITH RESPECT TO ANY ERRORS, OMISSIONS, INCONSISTENCIES, AMBIGUITIES OR CONFLICTS WHICH ARE ALLEGED.

CONTRACTOR TO VERIFY ALL DIMENSIONS AND NOTIFY THE ARCHITECT OF ANY DISCREPANCIES BEFORE WORK COMMENCES. DO NOT SCALE DRAWINGS

TRUE NORTH

PLAN NORTH

WATTS Adjustable Accutrol Weir Tag: _____ Adjustable Flow Control for Roof Drains

ADJUSTABLE ACCUTROL (for Large Sump Roof Drains only)
 For more flexibility in controlling flow with heads deeper than 2", Watts Drainage offers the Adjustable Accutrol. The Adjustable Accutrol Weir is designed with a single parabolic opening that can be covered to restrict flow above 2" of head to less than 5 gpm per inch, up to 6" of head. To adjust the flow rate for depths over 2" of head, set the slot in the adjustable upper cone according to the flow rate required. Refer to Table 1 below.
 Note: Flow rates are directly proportional to the amount of weir opening that is exposed.

EXAMPLE:
 For example, if the adjustable upper cone is set to cover 1/2 of the weir opening, flow rates above 2" of head will be restricted to 2-1/2 gpm per inch of head.
 Therefore, at 3" of head, the flow rate through the Accutrol Weir that has 1/2 the slot exposed will be:
 [5 gpm (per inch of head) x 2 inches of head] + 2-1/2 gpm (for the third inch of head) = 12-1/2 gpm.

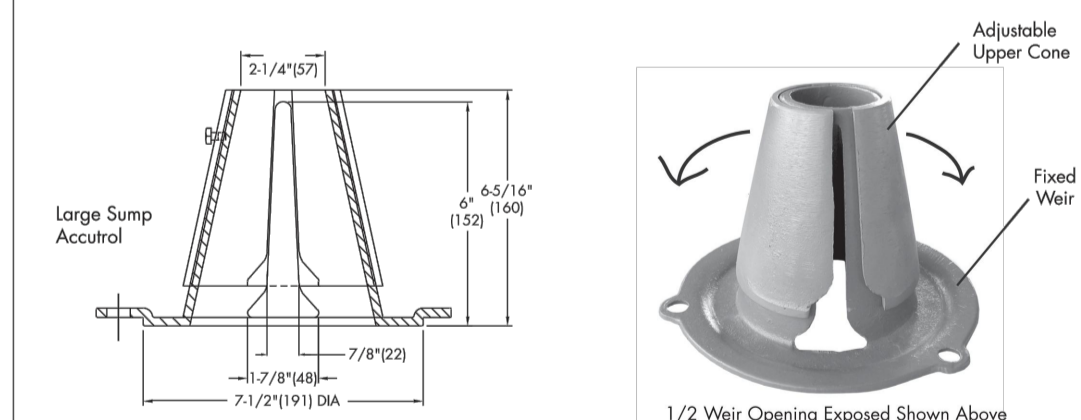
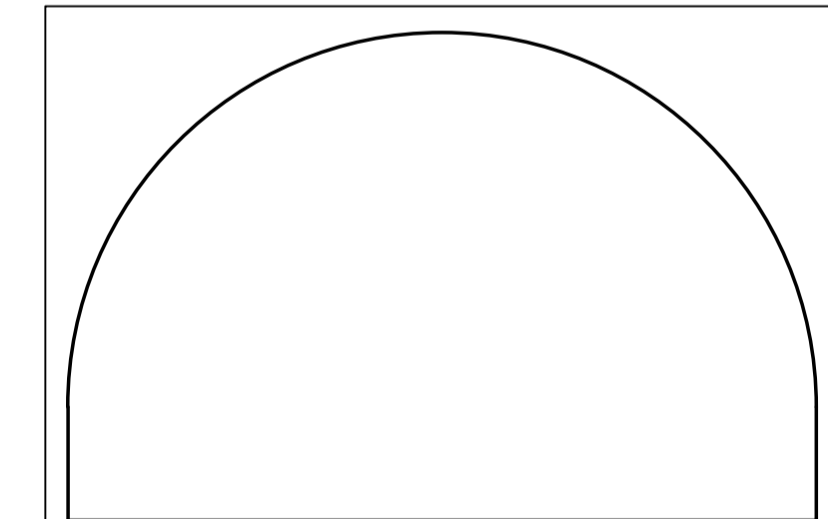


TABLE 1. Adjustable Accutrol Flow Rate Settings

Weir Opening Exposed	1"	2"	3"	4"	5"	6"
Fully Exposed	5	10	15	20	25	30
3/4	5	10	13.75	17.5	21.25	25
1/2	5	10	12.5	15	17.5	20
1/4	5	10	11.25	12.5	13.75	15
Closed	5	5	5	5	5	5

Job Name _____ Contractor _____
 Job Location _____ Contractor's P.O. No. _____
 Engineer _____ Representative _____

Watts product specifications in U.S. customary units and metric are approximate and are provided for reference only. For precise measurements, please contact Watts Technical Service. Watts reserves the right to change or modify product design, construction, specifications, or materials without prior notice and without incurring any obligation to make such changes and modifications on Watts products previously or subsequently sold.
 USA: Tel: (800) 238-2581 • Fax: (800) 248-3020 • Watts.com
 Canada: Tel: (905) 332-4000 • Fax: (905) 332-7068 • Watts.ca
 Latin America: Tel: (52) 81-1001-8600 • Fax: (52) 81-8000-7091 • Watts.com
 ES-WD-FD-ACCUTROL-ADU-CAN 1615 © 2016 Watts



EDWARD J. CUHACI & ASSOCIATES ARCHITECTS Inc.
 171 Slaters St, Suite 100, Ottawa, Ontario, K1P 5H7
 Fax: (613) 236-1944 Telephone: (613) 236-7135 E-mail: info@cuhaci.com

PROJECT TITLE/TITRE DU PROJET
ÉCOLE ÉLÉMENTAIRE PUBLIQUE ORLÉANS SUD
 675 MONARDIA WAY
 OTTAWA, ONTARIO
 CONSEIL DES ÉCOLES PUBLIQUES DE L'EST DE L'ONTARIO
 2445 BOUL. ST-LAURENT, OTTAWA, ON

DRAWING TITLE/TITRE DU DESSIN
ROOF DRAINAGE AREA PLAN

SCALE	PROJ. No.	ISSUE No.	REV. No.
ECHELLE 1:150	0003850-9668	8	0
DRAWN BY	ST-RVT	DRAWING/DESSIN	
CHECKED BY	DY		
DATE	MAY 2024		

C08

ACAD FILE/FICHIER: 0003850-9668 C01-8.dwg

D07-12-23-0102

#####