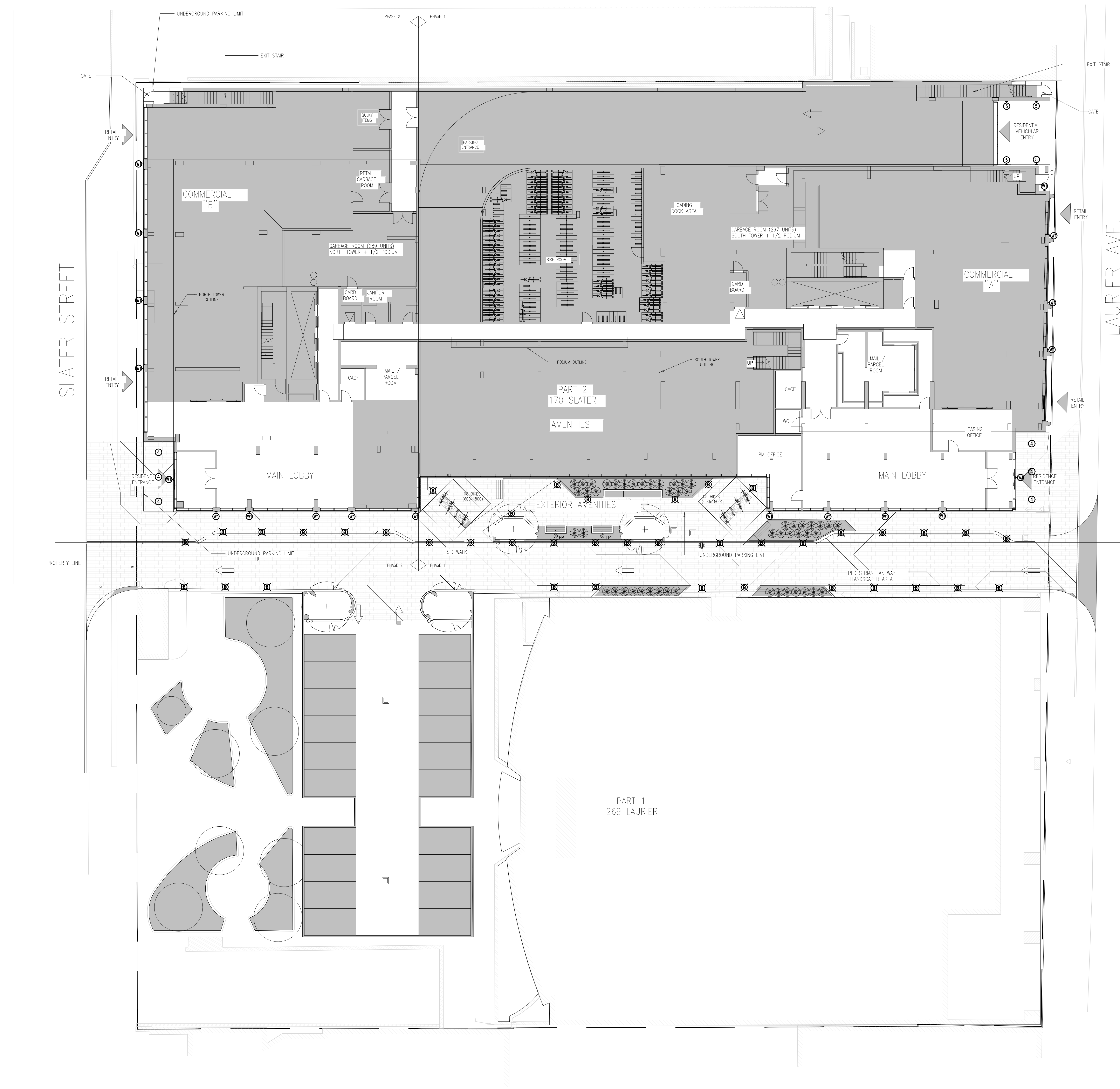


EXTERIOR LIGHTING FIXTURE SCHEDULE						
TYPE	DESCRIPTION	QTY/NO.	LUMPS PER FIXTURE		MOUNTING	REMARKS
			TYPE	WATTS		
W1	WALL MOUNT	PERFORMANCE IN LIGHTING	LED	15	3000K	347 SURFACE C/W ACCESSORIES
B	EXTERIOR LIGHTING BOLLARD	PERFORMANCE IN LIGHTING PL - KVA 8_830_076451	LED	15	3000K	347 SURFACE PHOTOCELL C/W ACCESSORIES
4	CEILING CANOPY	PERFORMANCE IN LIGHTING LFR-480-M-6L35KNO-DM1-LFR-480-1-S	LED	32.89	3000K	347 SURFACE C/W ACCESSORIES PHOTOCELL
5	WALL MOUNT	PERFORMANCE IN LIGHTING PML-16X-05-46-47	LED	65	4000K	347 SURFACE C/W ACCESSORIES PHOTOCELL

LIGHTING LEGEND	
SYMBOL	DESCRIPTION
	LIGHT FIXTURE - TYPE AS SHOWN
	LIGHT FIXTURES ON EMERGENCY POWER OR NIGHT LIGHT - DO NOT SWITCH
	CEILING MOUNTED LIGHT FIXTURE - TYPE AS SHOWN
	WALL MOUNTED LIGHT FIXTURE - TYPE AS SHOWN
	EXTERIOR POLE MOUNTED LIGHT FIXTURE - TYPE AS SHOWN
	EXTERIOR BOLLARD LIGHT FIXTURE - TYPE AS SHOWN

- GENERAL NOTES**
- TYPICAL
- REFER TO ARCHITECTURAL ELEVATIONS FOR ALL BUILDING MOUNTED LIGHTS. COORDINATE EXACT LOCATION PRIOR TO CONSTRUCTION.
 - FINAL FIXTURE FINISH COLOR SELECTION SHALL BE BY ARCHITECT.
 - ALL LED FIXTURES SHALL BE C/W DRIVERS.
 - ALL EXTERIOR SITE LIGHT FIXTURE TO BE OPERATED BY PHOTOCELL.



ELECTRICAL SITE PLAN
E1
1:150

2024-04-26	ISSUED FOR SITE PLAN REVIEW		
2024-03-11	ISSUED FOR SITE PLAN		
DATE	REVISION	REV	

THE ENGINEER MAKES NO WARRANTY OR LIABILITY FOR THE QUALITY OF THE WORK OR THE DESIGN OR THE CONSTRUCTION OF THE PROJECT OR THE RESULTS THEREOF. THE ENGINEER'S RESPONSIBILITY IS LIMITED TO THE DESIGN AND CONSTRUCTION OF THE PROJECT AS SHOWN ON THESE DRAWINGS. THE ENGINEER SHALL NOT BE RESPONSIBLE FOR THE DESIGN OR CONSTRUCTION OF ANY OTHER WORK OR THE RESULTS THEREOF. THE ENGINEER SHALL NOT BE RESPONSIBLE FOR THE DESIGN OR CONSTRUCTION OF ANY OTHER WORK OR THE RESULTS THEREOF.

GWAL 65
Goodley Woodmark & Associates Ltd.

1688 Woodward Dr. 613 227-5111 Voice
Ottawa Ontario 613 227-5115 Fax
Canada K2C 3R6 www.gwal.com Web

Project No. / No. du projet: 2022-689

Scale / Echelle: AS NOTED / 2022-689

Design by: LAU

Drawn by: H.PANDEY

Checked by: D.WYAS

Professional Engineer
D.B. VIVAS
PROFESSIONAL ENGINEER
PROVINCE OF ONTARIO

Project/Projet: 170 SLATER STREET OTTAWA, ON

Drawing/Plan: ELECTRICAL SITE PLAN

Scale / Echelle: AS NOTED / 2022-689

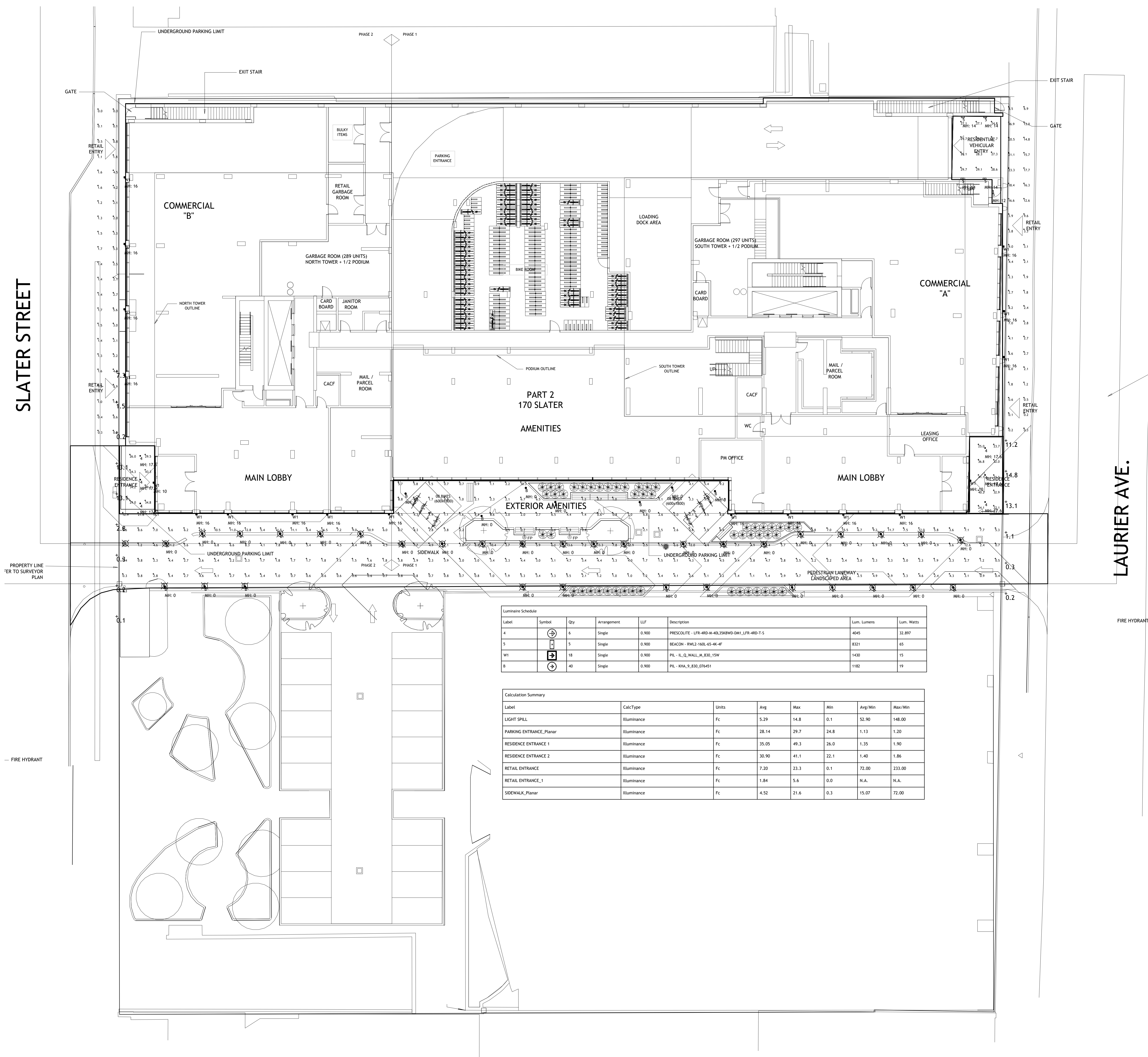
Design by: LAU

Drawn by: H.PANDEY

Checked by: D.WYAS

E1

Client



Label	Symbol	Qty	Arrangement	LFP	Description	Lum. Lumens	Lum. Watts
A	⊕	4	Single	0.900	PRESCOLITE - 175-400-H-402500W-DNA1_LFR-400-T-5	4075	32.897
S	⊕	1	Single	0.900	SEACOR - PML2-1605-65-48-4F	8321	65
WI	⊕	18	Single	0.900	PL - H_L_WALL_ALB_15W	1430	15
SI	⊕	40	Single	0.900	PL - KHL_P_830_07501	1182	19

Label	CalcType	Units	Avg	Max	Min	Avg/Min	Max/Min
LIGHT SPILL	Illuminance	Fc	5.29	14.8	0.1	52.90	148.00
PARKING ENTRANCE_Planar	Illuminance	Fc	28.14	29.7	24.8	1.13	1.20
RESIDENCE ENTRANCE 1	Illuminance	Fc	35.05	49.3	26.0	1.35	1.90
RESIDENCE ENTRANCE 2	Illuminance	Fc	30.90	41.1	22.1	1.40	1.86
RETAIL ENTRANCE_1	Illuminance	Fc	7.20	23.3	0.1	72.00	233.00
RETAIL ENTRANCE_2	Illuminance	Fc	1.84	5.6	0.0	N.A.	N.A.
SIDEWALK_Planar	Illuminance	Fc	4.52	21.6	0.3	15.07	72.00

1 ELECTRICAL SITE PHOTOMETRIC
E2 1:150

DATE	REVISION	REF
2024-04-26	ISSUED FOR SITE PLAN REVIEW	-
2024-03-11	ISSUED FOR SITE PLAN	-

THE ENGINEER MAKES NO WARRANTY OR REPRESENTATION AS TO THE ACCURACY OF THE INFORMATION PROVIDED HEREON AND THE ENGINEER SHALL NOT BE RESPONSIBLE FOR ANY DAMAGE TO PERSONS OR PROPERTY CAUSED BY THE FAILURE TO OBTAIN AND / OR FOLLOW THE ENGINEER'S RECOMMENDATIONS WITH RESPECT TO ANY DESIGN, CONSTRUCTION, INSTALLATION, MAINTENANCE OR OPERATION WHICH MAY BE REQUIRED. THIS DRAWING IS THE PROPERTY OF GOODFREY WEAVER & ASSOCIATES LIMITED AND ALL RIGHTS ARE RESERVED. NO USE OF THIS DRAWING MAY BE MADE WITHOUT EXPRESS WRITTEN CONSENT. DO NOT SCALE DRAWINGS.

L'INGÉNIEUR DÉCLARE QU'IL NE GARANTIT NI ASSUME DE RESPONSABILITÉ EN CE QUI CONCERNE L'INFORMATION FOURNIE ICI ET QU'IL NE SERA PAS RESPONSABLE EN CAS DE DOMMAGE À PERSONNES OU BIENS CAUSÉ PAR LE MANQUE DE SUCCÈS À OBTENIR ET / OU DE SUIVRE LES RECOMMANDATIONS DE L'INGÉNIEUR EN CE QUI CONCERNE LES CONCEPTIONS, INSTALLATIONS, MAINTENANCE OU OPÉRATIONS. CE DOCUMENT EST LA PROPRIÉTÉ DE GOODFREY WEAVER & ASSOCIATES LIMITED ET TOUTS LES DROITS SONT RÉSERVÉS. L'UTILISATION EST INTERDITE SANS LE CONSENTEMENT ÉCRIT DE L'AUTEUR. NE PAS MESURER LES CROQUIS À L'ÉCHELLE.

GWAL 65
Goodfrey Weaver & Associates Ltd.

1888 Woodward Dr. Ottawa, Ontario K2C 3R6
613 227-5111
613 727-5115
www.gwal.com

Project: 170 Slater Street
Sheet: 0201

D. B. VIVAS
PROFESSIONAL ENGINEER
PROVINCE OF ONTARIO

170 SLATER STREET
OTTAWA, ON

Drawing Title / Titre du dessin
ELECTRICAL SITE PHOTOMETRIC

Scale: AS NOTED / Échelle: AS NOTED
Project no./No. du projet: 2022-689

Design by: LAU / Conçu par: LAU
Drawn by: H.PANDEY / Dessiné par: H.PANDEY
Reviewed by: D.VIVAS / Vérifié par: D.VIVAS

E2