

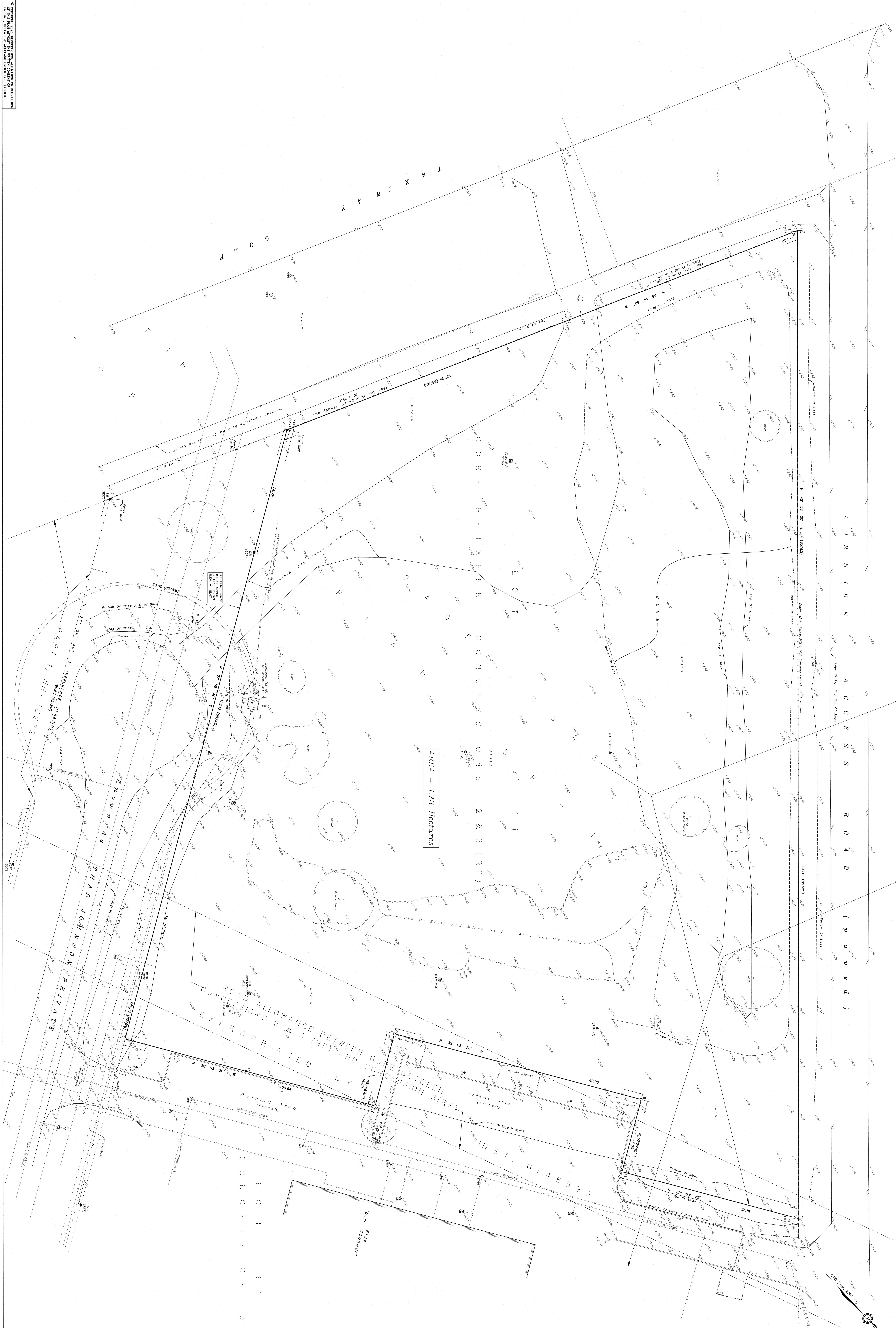
VERTICAL DISTANCES AND ELEVATIONS SHOWN ON THIS PLAN ARE IN METERS AND ON A CONVERSION TO FEET OF 1 METRE = 3.281 FT

PART 2, SR-10272

PART 2, SR-942

PIN 04035-0153

TOPOGRAPHIC SURVEY OF PART OF LOT 11 GORE BETWEEN CONCESSIONS 2 & 3 (RIDEAU FRONT) PART OF THE ROAD ALLOWANCE BETWEEN THE GORE BETWEEN CONCESSIONS 2&3 (RIDEAU FRONT) AND CONCESSION 3 (RIDEAU FRONT) PART OF LOT 11 CONCESSION 3 (RIDEAU FRONT) GEOGRAPHIC TOWNSHIP OF GLOUCESTER CITY OF OTTAWA FAIRHALL, JOFFATT & WOODLAND LIMITED OTTAWA LAND SURVEYORS SCALE 1:200



ARDA = 173 Hectares

**LEGEND**  
- S- SURVEY MONUMENT SET  
- S- STANDARD IRON BARS  
- C- CONCRETE PILE  
- P- PLASTIC PIPE  
- (M) - METRIC COORDINATE NUMBER  
- (RF) - RIDEAU FRONT  
- (RF) - FAIRHALL, JOFFATT & WOODLAND LIMITED, O.L.S.  
- H- ROAD FRONT  
- C-SP - COMBUSTIBLE STEEL PIPE  
- W- WATER TANK  
- W- WATER VALVE  
- B- BARRIERS  
- S- SINKHOLE MARKERS  
- W- WIRE MARKERS  
- O- STRIP MARKERS  
- L- LAPEL MARKERS  
- T- TREE MARKERS  
- M- METEOROLOGICAL  
- W- WIND VANE  
- S- STAKE MARKERS  
- B- BENCH MARKERS

**EXEMPT NOTES**  
1. THE SURVEYOR HAS CONDUCTED THIS SURVEY IN ACCORDANCE WITH THE SURVEY ACT AND THE REGULATIONS MADE UNDER THEREOF.  
2. THE SURVEYOR HAS CONDUCTED THIS SURVEY IN ACCORDANCE WITH THE SURVEY ACT AND THE REGULATIONS MADE UNDER THEREOF.  
3. THE SURVEYOR HAS CONDUCTED THIS SURVEY IN ACCORDANCE WITH THE SURVEY ACT AND THE REGULATIONS MADE UNDER THEREOF.  
4. THE SURVEYOR HAS CONDUCTED THIS SURVEY IN ACCORDANCE WITH THE SURVEY ACT AND THE REGULATIONS MADE UNDER THEREOF.

**NOTES**  
1. THE DIGITAL SOUNDINGS ARE REFERENCED TO THE UTM 8000 SYSTEM, ZONE 18N (ORIGINAL).  
2. THE CORRECTED SCALE FACTOR IS 0.999997.  
3. ALL SURVEY MONUMENTS (PM) SET DUE TO UNDERGROUND UTILITY LOCATIONS.

**PLANNING NOTE**  
THE PLANNING NOTE IS PROVIDED FOR YOUR INFORMATION ONLY AND IS NOT PART OF THE SURVEY. IT IS SUBJECT TO CHANGE WITHOUT NOTICE AND IS NOT TO BE USED FOR ANY OTHER PURPOSE.

**SURVEYOR'S CERTIFICATE**  
I, JAMES W. WOODLAND, a duly qualified and licensed land surveyor, certify that this plan was prepared by me or under my direct supervision and that it is a true and correct copy of the original plan as recorded in the Land Information System of the City of Ottawa and that the same complies with the provisions of the Survey Act and the Regulations made under thereof.

**ASSOCIATION OF ONTARIO LAND SURVEYORS**  
MEMBER SINCE 1981  
No. 123456  
1000 SHEPPARD AVENUE EAST, SUITE 100  
SCARBOROUGH, ONTARIO M1B 1T7

ACCOMMODATION OF ONTARIO LAND SURVEYORS  
V-154535

ASSOCIATION OF ONTARIO LAND SURVEYORS  
MEMBER SINCE 1981  
No. 123456  
1000 SHEPPARD AVENUE EAST, SUITE 100  
SCARBOROUGH, ONTARIO M1B 1T7