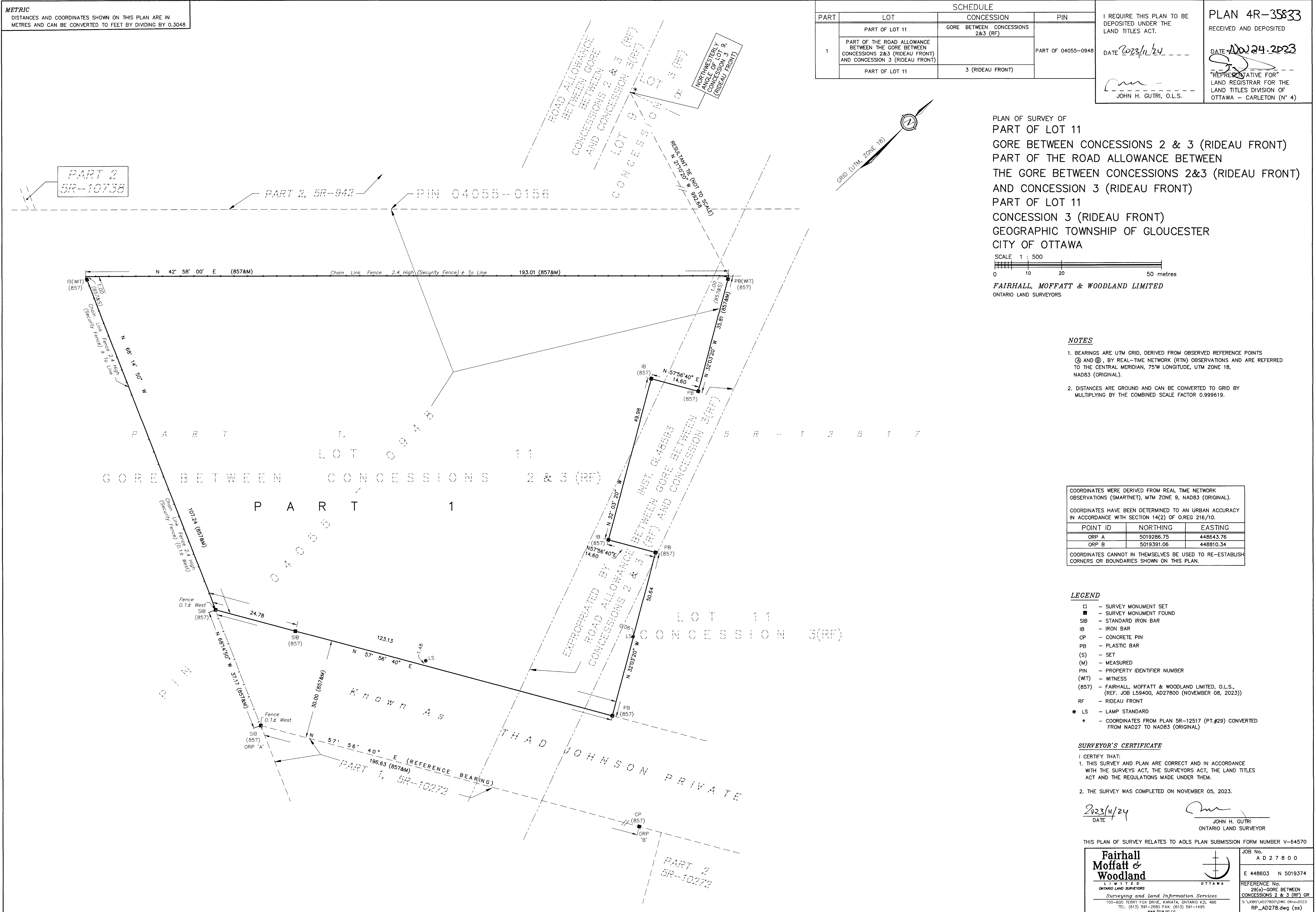


**METRIC**  
DISTANCES AND COORDINATES SHOWN ON THIS PLAN ARE IN METRES AND CAN BE CONVERTED TO FEET BY DIVIDING BY 0.3048

SCHEDULE			
PART	LOT	CONCESSION	PIN
1	PART OF LOT 11	GORE BETWEEN CONCESSIONS 2&3 (RF)	PART OF 04055-0948
	PART OF THE ROAD ALLOWANCE BETWEEN CONCESSIONS 2&3 (RIDEAU FRONT) AND CONCESSION 3 (RIDEAU FRONT)		
	PART OF LOT 11	3 (RIDEAU FRONT)	

I REQUIRE THIS PLAN TO BE DEPOSITED UNDER THE LAND TITLES ACT.  
DATE 2023/11/24  
JOHN H. GUTRI, O.L.S.

PLAN 4R-35833  
RECEIVED AND DEPOSITED  
DATE NOV 24 2023  
REPRESENTATIVE FOR  
LAND REGISTRAR FOR THE  
OTTAWA - CARLETON (N° 4)



PLAN OF SURVEY OF  
PART OF LOT 11  
GORE BETWEEN CONCESSIONS 2 & 3 (RIDEAU FRONT)  
PART OF THE ROAD ALLOWANCE BETWEEN  
THE GORE BETWEEN CONCESSIONS 2&3 (RIDEAU FRONT)  
AND CONCESSION 3 (RIDEAU FRONT)  
PART OF LOT 11  
CONCESSION 3 (RIDEAU FRONT)  
GEOGRAPHIC TOWNSHIP OF GLOUCESTER  
CITY OF OTTAWA

SCALE 1 : 500  
0 10 20 50 metres  
FAIRHALL, MOFFATT & WOODLAND LIMITED  
ONTARIO LAND SURVEYORS

- NOTES**
- BEARINGS ARE UTM GRID, DERIVED FROM OBSERVED REFERENCE POINTS (S) AND (M), BY REAL-TIME NETWORK (RTN) OBSERVATIONS AND ARE REFERRED TO THE CENTRAL MERIDIAN, 75°W LONGITUDE, UTM ZONE 18, NAD83 (ORIGINAL).
  - DISTANCES ARE GROUND AND CAN BE CONVERTED TO GRID BY MULTIPLYING BY THE COMBINED SCALE FACTOR 0.999619.

COORDINATES WERE DERIVED FROM REAL TIME NETWORK OBSERVATIONS (SMARTNET), MTM ZONE 9, NAD83 (ORIGINAL).  
COORDINATES HAVE BEEN DETERMINED TO AN URBAN ACCURACY IN ACCORDANCE WITH SECTION 14(2) OF O.REG 216/10.

POINT ID	NORTHING	EASTING
ORP A	5019286.75	448643.76
ORP B	5019391.06	448810.34

COORDINATES CANNOT IN THEMSELVES BE USED TO RE-ESTABLISH CORNERS OR BOUNDARIES SHOWN ON THIS PLAN.

- LEGEND**
- - SURVEY MONUMENT SET
  - - SURVEY MONUMENT FOUND
  - SIB - STANDARD IRON BAR
  - IB - IRON BAR
  - CP - CONCRETE PIN
  - PB - PLASTIC BAR
  - (S) - SET
  - (M) - MEASURED
  - PIN - PROPERTY IDENTIFIER NUMBER
  - (WT) - WITNESS
  - (857) - FAIRHALL, MOFFATT & WOODLAND LIMITED, O.L.S., (REF. JOB L59400, AD27800 (NOVEMBER 08, 2023))
  - RF - RIDEAU FRONT
  - LS - LAMP STANDARD
  - \* - COORDINATES FROM PLAN 5R-12517 (PT.#29) CONVERTED FROM NAD27 TO NAD83 (ORIGINAL)

**SURVEYOR'S CERTIFICATE**

I CERTIFY THAT:  
1. THIS SURVEY AND PLAN ARE CORRECT AND IN ACCORDANCE WITH THE SURVEYS ACT, THE SURVEYORS ACT, THE LAND TITLES ACT AND THE REGULATIONS MADE UNDER THEM.  
2. THE SURVEY WAS COMPLETED ON NOVEMBER 05, 2023.

DATE 2023/11/24  
JOHN H. GUTRI  
ONTARIO LAND SURVEYOR

THIS PLAN OF SURVEY RELATES TO AOLS PLAN SUBMISSION FORM NUMBER V-64570

<b>Fairhall Moffatt &amp; Woodland</b> LIMITED OTTAWA Surveying and Land Information Services 100-600 TERRY FOX DRIVE, KANATA, ONTARIO K2L 4B6 TEL: (613) 591-2260 FAX: (613) 591-1426 www.fmw.on.ca	JOB No. A D 2 7 8 0 0
	REFERENCE No. E 448603 N 5019374 29(a)-GORE BETWEEN CONCESSIONS 2 & 3 (RF) GR S:\4085\AD27800\DWG_06nov2023 RP_AD278.dwg (52)