

PROJET | PAYSAGE

24 Mont-Royal O. Bureau 801 Montréal Québec H2T 2S2
T: 514.849.7700 F: 514.849.2027 info@projetpaysage.com



CLIENT:



PROJECT: 2026 SCOTT STREET

LANDSCAPE ARCHITECTURE

| SHEET | TITLE | SCALE |
|-------|----------------------------|----------|
| AP-10 | SITE PLAN | 1:150 |
| AP-20 | LANDSCAPE PLAN AND GRADING | 1:150 |
| AP-30 | PLANTING PLAN | 1:150 |
| AP-40 | PLANTING BED PLAN | 1:150 |
| AP-50 | CONSTRUCTION DETAILS | VARIABLE |
| AP-51 | CONSTRUCTION DETAILS | VARIABLE |
| AP-52 | PLANTING DETAILS | VARIABLE |

In collaboration with:

Architecture

Civil Eng.

Urban Planning





LEGEND

- Lot limit
- - - Intervention limit
- Proposed deciduous trees and shrubs
- ⊙ Proposed coniferous trees and shrubs
- ▨ Perennials and grasses
- ◻ Sod
- ⊕ Lighting
- ⊕ Proposed table (not included)
- Bench

| Revisions | | | |
|-----------|-------------------|-------|----------|
| No. | Description | Appr. | Date |
| 1 | Site Plan Control | S.G. | 23/02/22 |
| 2 | Site Plan Control | P.L. | 23/10/13 |
| 3 | Site Plan Control | P.L. | 24/03/25 |
| 4 | Site Plan Control | P.L. | 24/04/12 |
| | | | |
| | | | |
| | | | |
| | | | |
| | | | |
| | | | |
| | | | |
| | | | |
| | | | |

DO NOT USE FOR CONSTRUCTION

- Notes :**
- 1- The Contractor must verify all site existing conditions before beginning the work and inform the Project Director of any errors, omissions or contradictions.
 - 2- Existing grades indicated on the plan come from the survey provided by the owner.
 - 3- The Contractor must not cut down any existing vegetation without the approval of the Project Director.
 - 4- Implantation of the works on site must be approved by the Project Director.
 - 5- The Contractor must use the CAD file for implantation of all work.
 - 6- The contractor must verify the amounts specified in the schedule and notify the landscape architect of any errors, omissions or contradictions before the close of the bid.

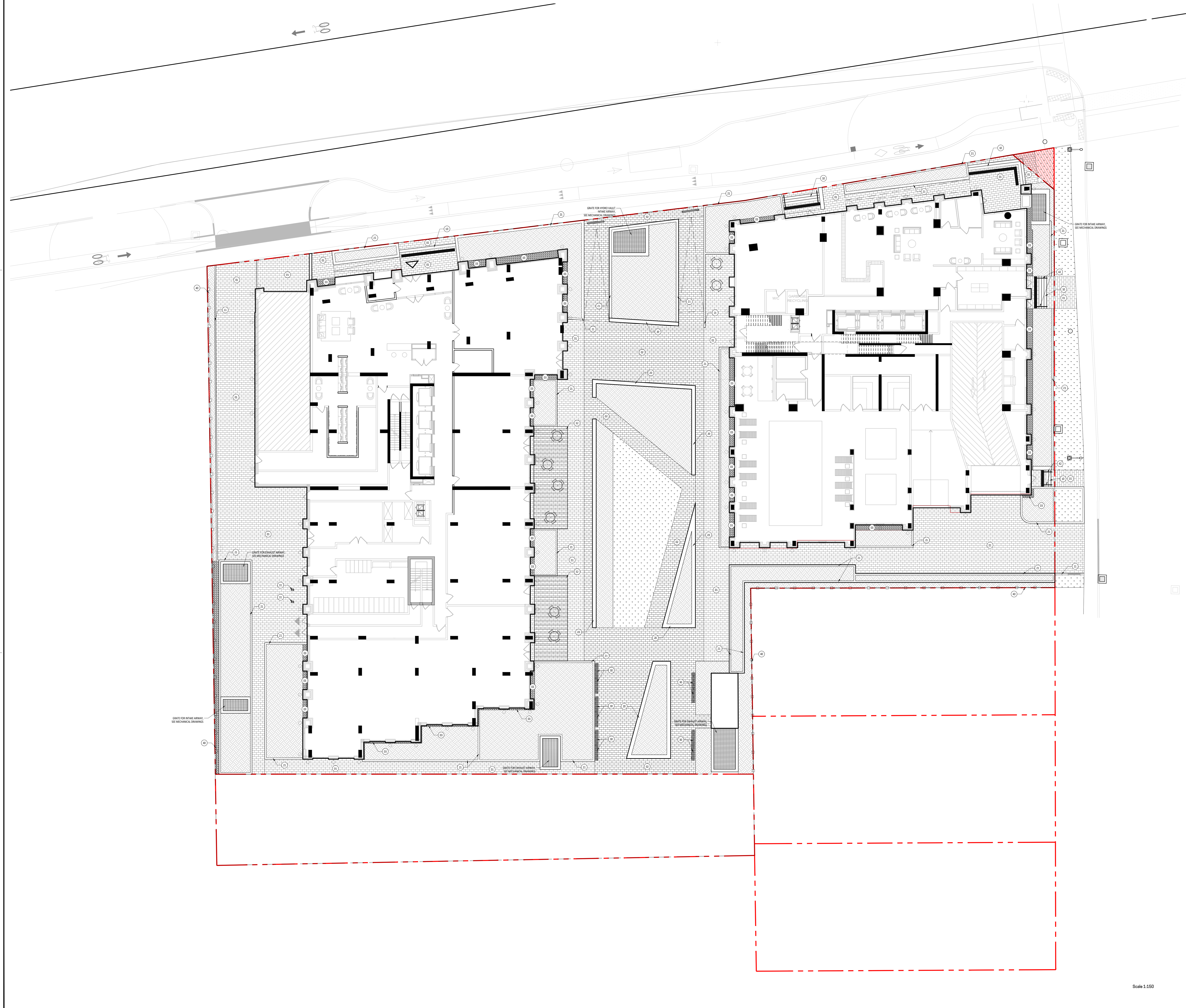
PROJET | PAYSAGE
 24 Mont-Royal O. Bureau 801 Montréal Québec H2T 2S2
 T: 514 849 7700 F: 514 849 2027 info@projetpaysage.com

Professional seal

Project name
2026 Scott Street
 File Number: 037-12-23-0019
 Plan Number #: 18076

Drawing title
SITE PLAN
 Scale 1:150

| | |
|-----------------------------|--|
| Designed by P.L. Richard | <p style="text-align: center; font-size: 2em; margin: 0;">AP-00</p> |
| Checked by A. Syedah | |
| Approved by S. Gallant | |
| Date March 2024 | <p style="text-align: center; font-weight: bold;">21-698</p> |



LEGEND

- Lot limit
- Intervention limit
- Lighting
- Planting bed, see planting plan
- Sod, see planting plan

List of details on plans

Key Description

Surfaces

- 01 High albedo concrete unit paver type 01
- 02 High albedo concrete unit paver type 02
- 03 River rock strip

Stairs, thresholds, edges and walls

- 10 Prefabricated concrete stairs
- 11 Concrete curb, see civil

Precast concrete

- 20 Precast concrete bench planter (450mm)
- 21 Precast concrete planter-wall (300mm)

Site furniture

- 30 Wood bench typ.
- 31 Bike ring typ.
- 32 Architectural trellis

Fence, gate, handrail and railing

- 40 Metal fence 2m of height
- 42 Handrail

| No. | Description | Appr. | Date |
|-----|-------------------|-------|----------|
| 1 | Site Plan Control | S.G. | 23/02/22 |
| 2 | Site Plan Control | P.L. | 23/10/13 |
| 3 | Site Plan Control | P.L. | 24/03/25 |
| 4 | Site Plan Control | P.L. | 24/04/12 |
| | | | |
| | | | |
| | | | |
| | | | |
| | | | |
| | | | |
| | | | |
| | | | |
| | | | |
| | | | |
| | | | |

DO NOT USE FOR CONSTRUCTION

- Notes :**
- The Contractor must verify all site existing conditions before beginning the work and inform the Project Director of any errors, omissions or contradictions.
 - Existing grades indicated on the plan come from the survey provided by the owner.
 - The Contractor must not cut down any existing vegetation without the approval of the Project Director.
 - Implementation of the works on site must be approved by the Project Director.
 - The Contractor must use the CAD file for implementation of all work.
 - The contractor must verify the amounts specified in the schedule and notify the landscape architect of any errors, omissions or contradictions before the close of the bid.

PROJET | PAYSAGE

24 Mont-Royal O. Bureau 801 Montréal Québec H2T 2S2
T: 514 849 7700 F: 514 849 2027 info@projetpaysage.com

Professional seal

Project name
2026 Scott Street
File Number 037-12-23-0019
Plan Number # 18076

Drawing title
LANDSCAPE PLAN AND GRADING
Scale 1:150

Designed by
P.L. Richard
Project
A. Syedah
Approved by
S. Gallant
Date
March 2024
Draw No.
AP-20
21-698

Scale 1:150

| No. | Description | Appr. | Date |
|-----|-------------------|-------|----------|
| 1 | Site Plan Control | S.G. | 23/02/22 |
| 2 | Site Plan Control | P.L. | 23/10/13 |
| 3 | Site Plan Control | P.L. | 24/03/05 |
| 4 | Site Plan Control | P.L. | 24/04/12 |

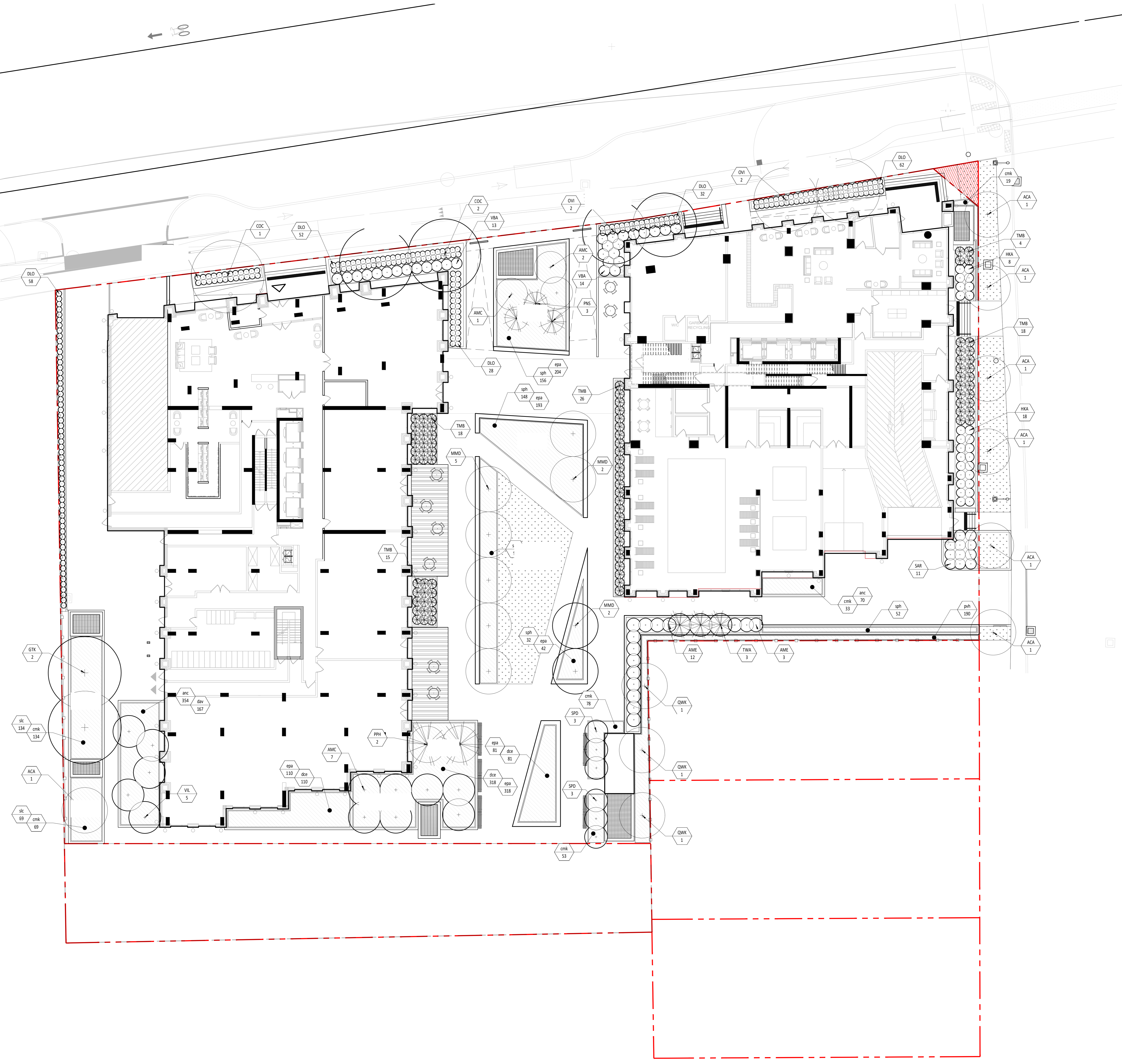
DO NOT USE FOR CONSTRUCTION

LEGEND

- Limit
- - - - - Intervention limit
- Proposed deciduous trees and shrubs
- ⊙ Proposed coniferous trees and shrubs
- ▨ Perennials and grasses
- ▤ Sod
- ⊕ Planting key

PLANTING LIST

| Key | Qty | Latin Name/Scientific Name | Caliper | Distance | SP |
|-----------------------|-----|--|---------|----------|----------|
| DECIDUOUS TREE | | | | | |
| ACA 1 | 1 | American Sycamore (Fraxinus americana) | 100 | 100mm | see plan |
| ACA 2 | 2 | Red Maple (Acer rubrum) | 100 | 100mm | see plan |
| ACA 3 | 3 | White Birch (Betula papyrifera) | 100 | 100mm | see plan |
| ACA 4 | 4 | Black Birch (Betula nigra) | 100 | 100mm | see plan |
| ACA 5 | 5 | Green Ash (Fraxinus viridis) | 100 | 100mm | see plan |
| ACA 6 | 6 | Black Walnut (Juglans nigra) | 100 | 100mm | see plan |
| ACA 7 | 7 | White Birch (Betula papyrifera) | 100 | 100mm | see plan |
| ACA 8 | 8 | Black Birch (Betula nigra) | 100 | 100mm | see plan |
| ACA 9 | 9 | White Birch (Betula papyrifera) | 100 | 100mm | see plan |
| ACA 10 | 10 | Black Birch (Betula nigra) | 100 | 100mm | see plan |
| ACA 11 | 11 | White Birch (Betula papyrifera) | 100 | 100mm | see plan |
| ACA 12 | 12 | Black Birch (Betula nigra) | 100 | 100mm | see plan |
| ACA 13 | 13 | White Birch (Betula papyrifera) | 100 | 100mm | see plan |
| ACA 14 | 14 | Black Birch (Betula nigra) | 100 | 100mm | see plan |
| ACA 15 | 15 | White Birch (Betula papyrifera) | 100 | 100mm | see plan |
| ACA 16 | 16 | Black Birch (Betula nigra) | 100 | 100mm | see plan |
| ACA 17 | 17 | White Birch (Betula papyrifera) | 100 | 100mm | see plan |
| ACA 18 | 18 | Black Birch (Betula nigra) | 100 | 100mm | see plan |
| ACA 19 | 19 | White Birch (Betula papyrifera) | 100 | 100mm | see plan |
| ACA 20 | 20 | Black Birch (Betula nigra) | 100 | 100mm | see plan |
| ACA 21 | 21 | White Birch (Betula papyrifera) | 100 | 100mm | see plan |
| ACA 22 | 22 | Black Birch (Betula nigra) | 100 | 100mm | see plan |
| ACA 23 | 23 | White Birch (Betula papyrifera) | 100 | 100mm | see plan |
| ACA 24 | 24 | Black Birch (Betula nigra) | 100 | 100mm | see plan |
| ACA 25 | 25 | White Birch (Betula papyrifera) | 100 | 100mm | see plan |
| ACA 26 | 26 | Black Birch (Betula nigra) | 100 | 100mm | see plan |
| ACA 27 | 27 | White Birch (Betula papyrifera) | 100 | 100mm | see plan |
| ACA 28 | 28 | Black Birch (Betula nigra) | 100 | 100mm | see plan |
| ACA 29 | 29 | White Birch (Betula papyrifera) | 100 | 100mm | see plan |
| ACA 30 | 30 | Black Birch (Betula nigra) | 100 | 100mm | see plan |
| ACA 31 | 31 | White Birch (Betula papyrifera) | 100 | 100mm | see plan |
| ACA 32 | 32 | Black Birch (Betula nigra) | 100 | 100mm | see plan |
| ACA 33 | 33 | White Birch (Betula papyrifera) | 100 | 100mm | see plan |
| ACA 34 | 34 | Black Birch (Betula nigra) | 100 | 100mm | see plan |
| ACA 35 | 35 | White Birch (Betula papyrifera) | 100 | 100mm | see plan |
| ACA 36 | 36 | Black Birch (Betula nigra) | 100 | 100mm | see plan |
| ACA 37 | 37 | White Birch (Betula papyrifera) | 100 | 100mm | see plan |
| ACA 38 | 38 | Black Birch (Betula nigra) | 100 | 100mm | see plan |
| ACA 39 | 39 | White Birch (Betula papyrifera) | 100 | 100mm | see plan |
| ACA 40 | 40 | Black Birch (Betula nigra) | 100 | 100mm | see plan |
| ACA 41 | 41 | White Birch (Betula papyrifera) | 100 | 100mm | see plan |
| ACA 42 | 42 | Black Birch (Betula nigra) | 100 | 100mm | see plan |
| ACA 43 | 43 | White Birch (Betula papyrifera) | 100 | 100mm | see plan |
| ACA 44 | 44 | Black Birch (Betula nigra) | 100 | 100mm | see plan |
| ACA 45 | 45 | White Birch (Betula papyrifera) | 100 | 100mm | see plan |
| ACA 46 | 46 | Black Birch (Betula nigra) | 100 | 100mm | see plan |
| ACA 47 | 47 | White Birch (Betula papyrifera) | 100 | 100mm | see plan |
| ACA 48 | 48 | Black Birch (Betula nigra) | 100 | 100mm | see plan |
| ACA 49 | 49 | White Birch (Betula papyrifera) | 100 | 100mm | see plan |
| ACA 50 | 50 | Black Birch (Betula nigra) | 100 | 100mm | see plan |
| ACA 51 | 51 | White Birch (Betula papyrifera) | 100 | 100mm | see plan |
| ACA 52 | 52 | Black Birch (Betula nigra) | 100 | 100mm | see plan |
| ACA 53 | 53 | White Birch (Betula papyrifera) | 100 | 100mm | see plan |
| ACA 54 | 54 | Black Birch (Betula nigra) | 100 | 100mm | see plan |
| ACA 55 | 55 | White Birch (Betula papyrifera) | 100 | 100mm | see plan |
| ACA 56 | 56 | Black Birch (Betula nigra) | 100 | 100mm | see plan |
| ACA 57 | 57 | White Birch (Betula papyrifera) | 100 | 100mm | see plan |
| ACA 58 | 58 | Black Birch (Betula nigra) | 100 | 100mm | see plan |
| ACA 59 | 59 | White Birch (Betula papyrifera) | 100 | 100mm | see plan |
| ACA 60 | 60 | Black Birch (Betula nigra) | 100 | 100mm | see plan |
| ACA 61 | 61 | White Birch (Betula papyrifera) | 100 | 100mm | see plan |
| ACA 62 | 62 | Black Birch (Betula nigra) | 100 | 100mm | see plan |
| ACA 63 | 63 | White Birch (Betula papyrifera) | 100 | 100mm | see plan |
| ACA 64 | 64 | Black Birch (Betula nigra) | 100 | 100mm | see plan |
| ACA 65 | 65 | White Birch (Betula papyrifera) | 100 | 100mm | see plan |
| ACA 66 | 66 | Black Birch (Betula nigra) | 100 | 100mm | see plan |
| ACA 67 | 67 | White Birch (Betula papyrifera) | 100 | 100mm | see plan |
| ACA 68 | 68 | Black Birch (Betula nigra) | 100 | 100mm | see plan |
| ACA 69 | 69 | White Birch (Betula papyrifera) | 100 | 100mm | see plan |
| ACA 70 | 70 | Black Birch (Betula nigra) | 100 | 100mm | see plan |
| ACA 71 | 71 | White Birch (Betula papyrifera) | 100 | 100mm | see plan |
| ACA 72 | 72 | Black Birch (Betula nigra) | 100 | 100mm | see plan |
| ACA 73 | 73 | White Birch (Betula papyrifera) | 100 | 100mm | see plan |
| ACA 74 | 74 | Black Birch (Betula nigra) | 100 | 100mm | see plan |
| ACA 75 | 75 | White Birch (Betula papyrifera) | 100 | 100mm | see plan |
| ACA 76 | 76 | Black Birch (Betula nigra) | 100 | 100mm | see plan |
| ACA 77 | 77 | White Birch (Betula papyrifera) | 100 | 100mm | see plan |
| ACA 78 | 78 | Black Birch (Betula nigra) | 100 | 100mm | see plan |
| ACA 79 | 79 | White Birch (Betula papyrifera) | 100 | 100mm | see plan |
| ACA 80 | 80 | Black Birch (Betula nigra) | 100 | 100mm | see plan |
| ACA 81 | 81 | White Birch (Betula papyrifera) | 100 | 100mm | see plan |
| ACA 82 | 82 | Black Birch (Betula nigra) | 100 | 100mm | see plan |
| ACA 83 | 83 | White Birch (Betula papyrifera) | 100 | 100mm | see plan |
| ACA 84 | 84 | Black Birch (Betula nigra) | 100 | 100mm | see plan |
| ACA 85 | 85 | White Birch (Betula papyrifera) | 100 | 100mm | see plan |
| ACA 86 | 86 | Black Birch (Betula nigra) | 100 | 100mm | see plan |
| ACA 87 | 87 | White Birch (Betula papyrifera) | 100 | 100mm | see plan |
| ACA 88 | 88 | Black Birch (Betula nigra) | 100 | 100mm | see plan |
| ACA 89 | 89 | White Birch (Betula papyrifera) | 100 | 100mm | see plan |
| ACA 90 | 90 | Black Birch (Betula nigra) | 100 | 100mm | see plan |
| ACA 91 | 91 | White Birch (Betula papyrifera) | 100 | 100mm | see plan |
| ACA 92 | 92 | Black Birch (Betula nigra) | 100 | 100mm | see plan |
| ACA 93 | 93 | White Birch (Betula papyrifera) | 100 | 100mm | see plan |
| ACA 94 | 94 | Black Birch (Betula nigra) | 100 | 100mm | see plan |
| ACA 95 | 95 | White Birch (Betula papyrifera) | 100 | 100mm | see plan |
| ACA 96 | 96 | Black Birch (Betula nigra) | 100 | 100mm | see plan |
| ACA 97 | 97 | White Birch (Betula papyrifera) | 100 | 100mm | see plan |
| ACA 98 | 98 | Black Birch (Betula nigra) | 100 | 100mm | see plan |
| ACA 99 | 99 | White Birch (Betula papyrifera) | 100 | 100mm | see plan |
| ACA 100 | 100 | Black Birch (Betula nigra) | 100 | 100mm | see plan |



- Notes :**
- The Contractor must verify all site existing conditions before beginning the work and inform the Project Director of any errors, omissions or contradictions.
 - Existing grades indicated on the plan come from the survey provided by the owner.
 - The Contractor must not cut down any existing vegetation without the approval of the Project Director.
 - Implementation of the works on site must be approved by the Project Director.
 - The Contractor must use the CAD file for implementation of all work.
 - The contractor must verify the amounts specified in the schedule and notify the landscape architect of any errors, omissions or contradictions before the close of the bid.

PROJET | PAYSAGE
 24 Mont-Royal O. Bureau 801. Montréal. Québec. H2T 2S2
 T: 514 849 7700 F: 514 849 2027 info@projetpaysage.com

Professional seal

Project name
2026 Scott Street
 File Number: 037-12-23-0019
 Plan Number: #18076

Drawing title
PLANTING PLAN

Scale 1:150

Designed by
 P.L. Richard

Drawn by
 A. Syedah

Approved by
 S. Gallant

Date
 March 2024

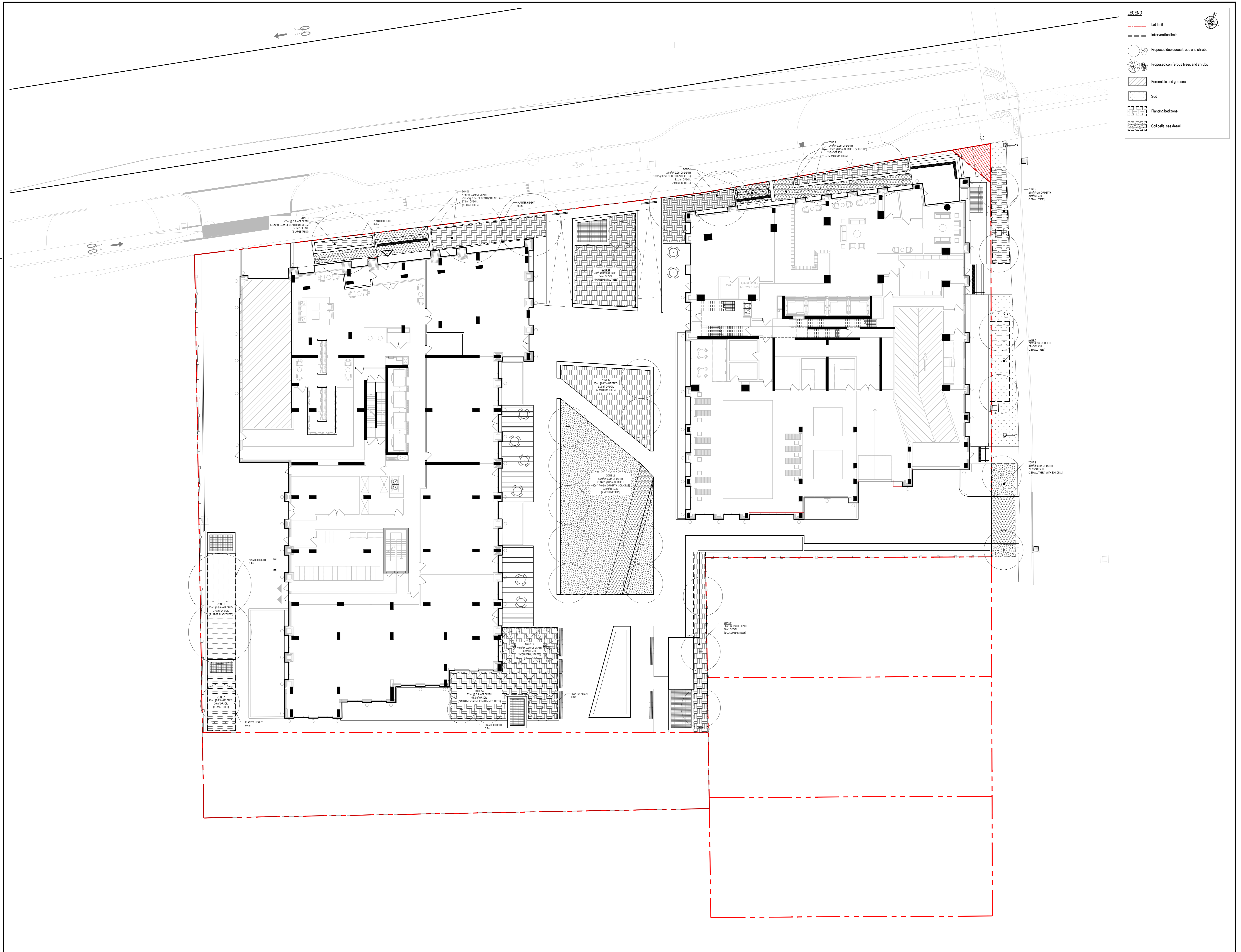
Sheet No.
AP-30

21-698



| No. | Description | Appr. | Date |
|-----|-------------------|-------|----------|
| 1 | Site Plan Control | S.G. | 23/09/22 |
| 2 | Site Plan Control | P.L. | 23/10/13 |
| 3 | Site Plan Control | P.L. | 24/03/25 |
| 4 | Site Plan Control | P.L. | 24/04/12 |
| | | | |
| | | | |
| | | | |
| | | | |
| | | | |
| | | | |
| | | | |
| | | | |
| | | | |
| | | | |
| | | | |
| | | | |

DO NOT USE FOR CONSTRUCTION



| | |
|---------|--------------------------------------|
| --- | Lot limit |
| - - - - | Intervention limit |
| (•) (•) | Proposed deciduous trees and shrubs |
| (•) (•) | Proposed coniferous trees and shrubs |
| ▨ | Perennials and grasses |
| ▩ | Sod |
| ▧ | Planting bed zone |
| ▨ | Soil cells, see detail |

- Notes :**
- 1- The Contractor must verify all site existing conditions before beginning the work and inform the Project Director of any errors, omissions or contradictions.
 - 2- Existing grades indicated on the plan come from the survey provided by the owner.
 - 3- The Contractor must not cut down any existing vegetation without the approval of the Project Director.
 - 4- Implantation of the works on site must be approved by the Project Director.
 - 5- The Contractor must use the CAD file for implantation of all work.
 - 6- The contractor must verify the amounts specified in the schedule and notify the landscape architect of any errors, omissions or contradictions before the close of the bid.

PROJET | PAYSAGE

24 Mont-Royal O. Bureau 801, Montréal, Québec H2T 2S2
T: 514.849.7700 F: 514.849.2027 info@projetpaysage.com

Professional seal

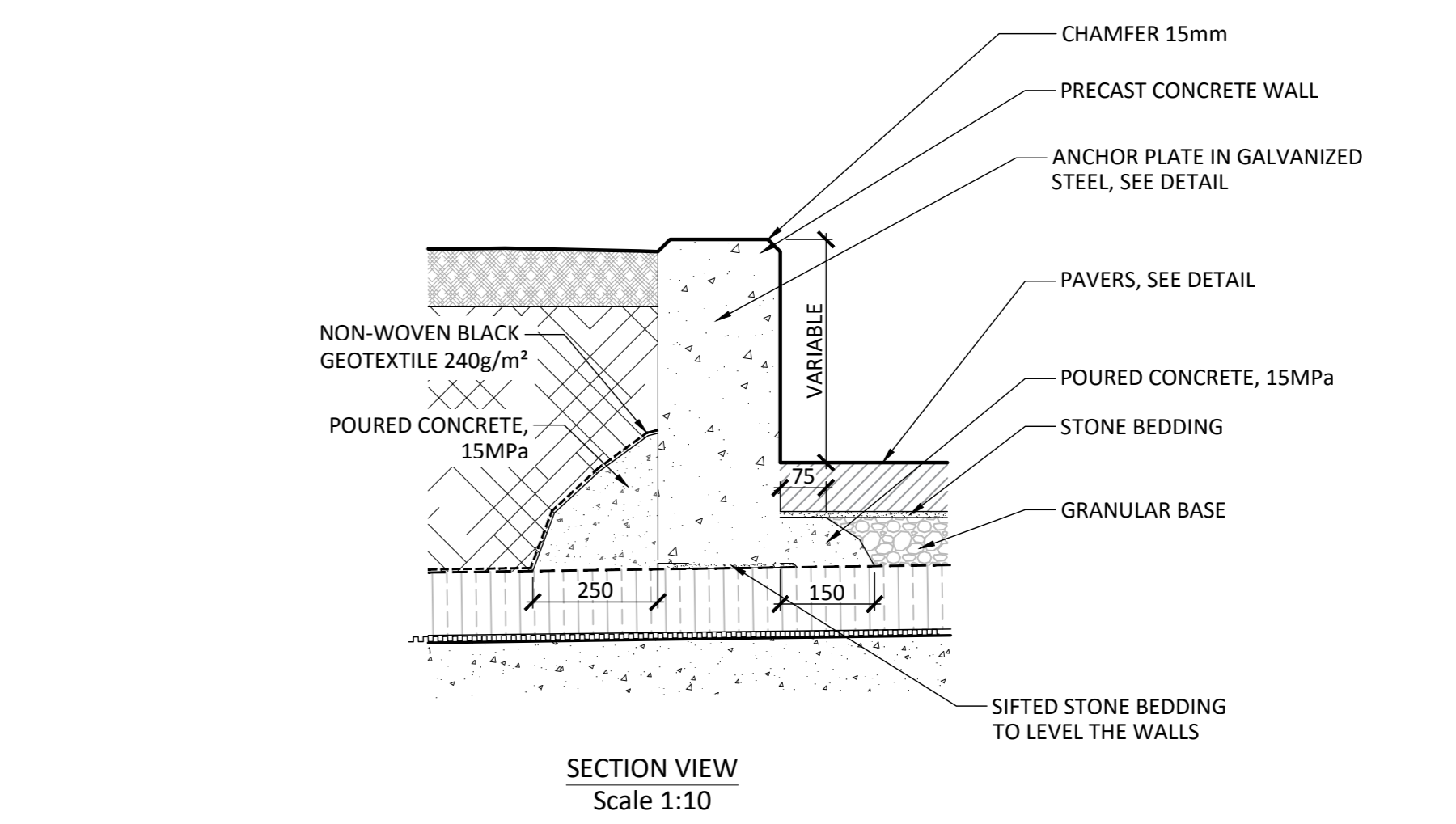
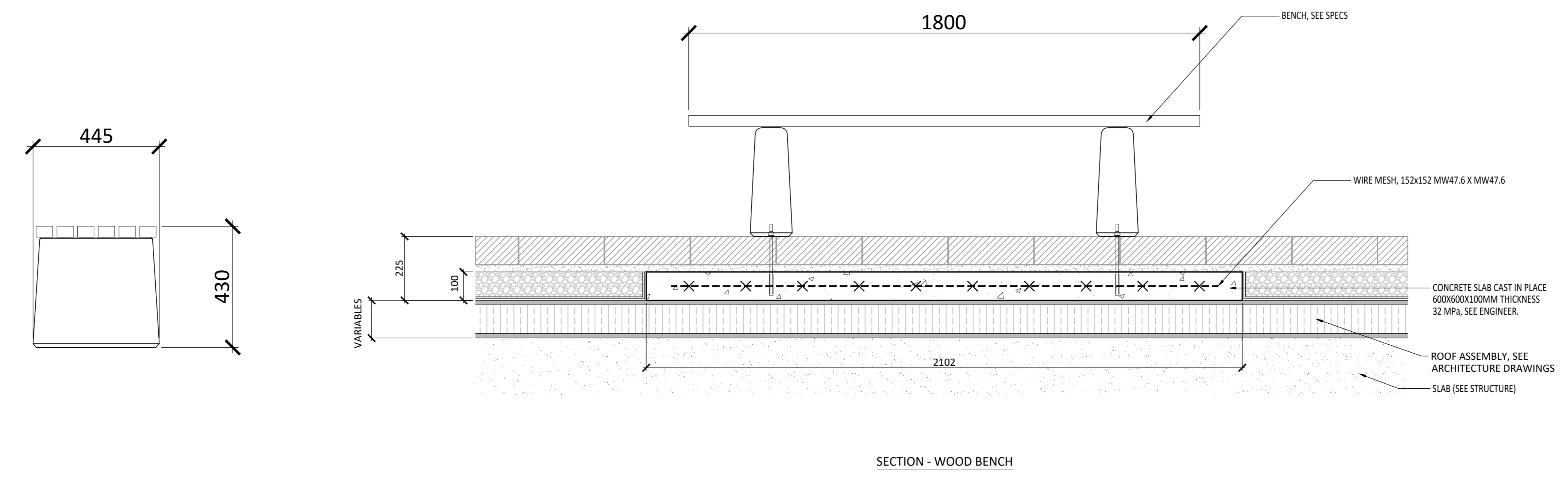
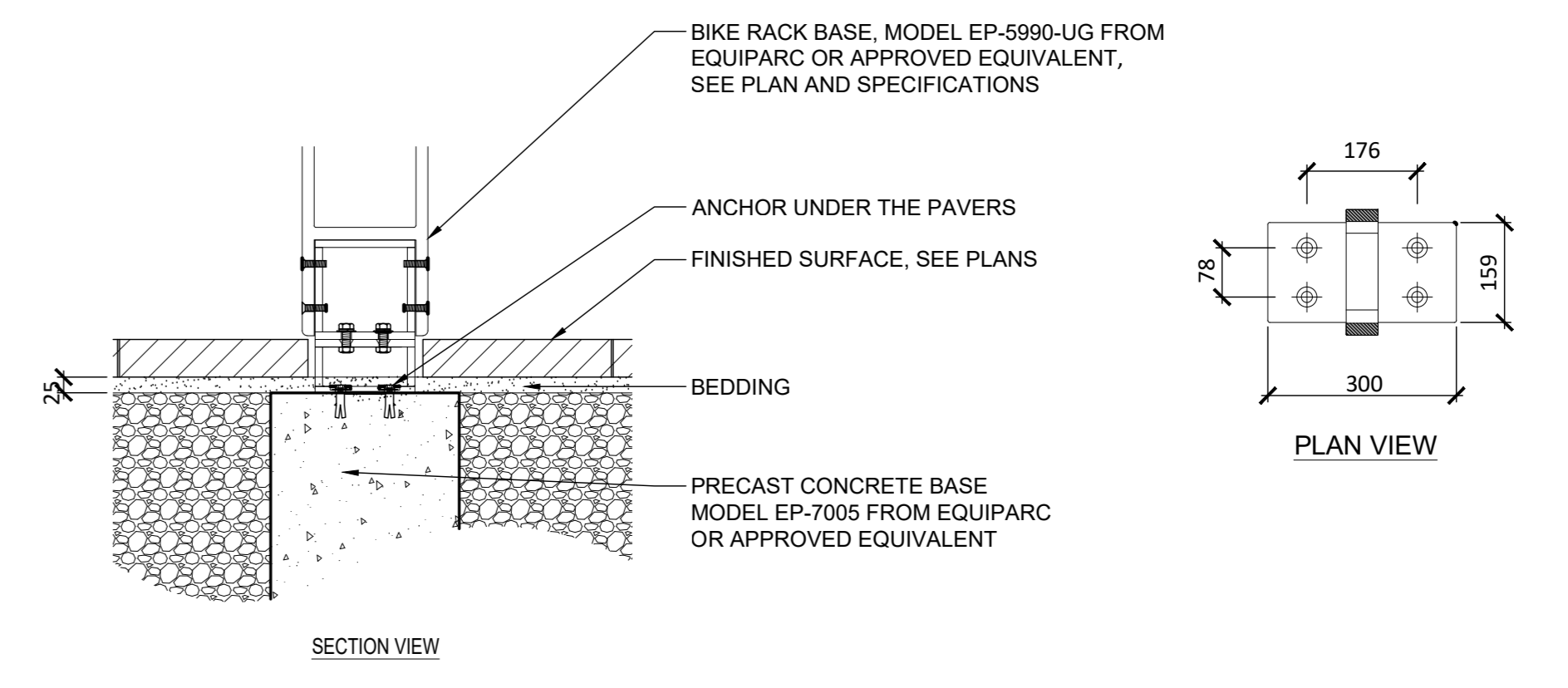
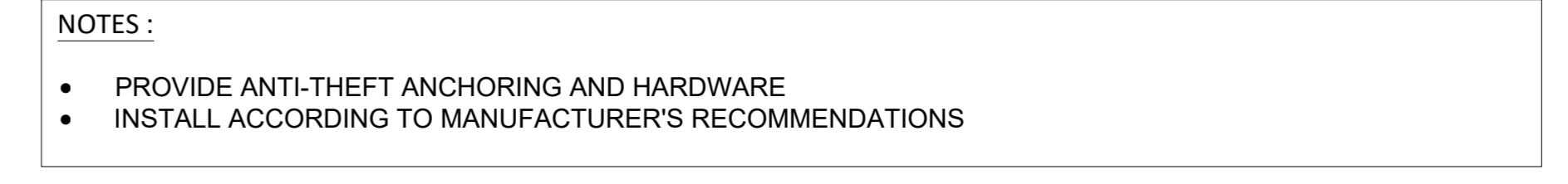
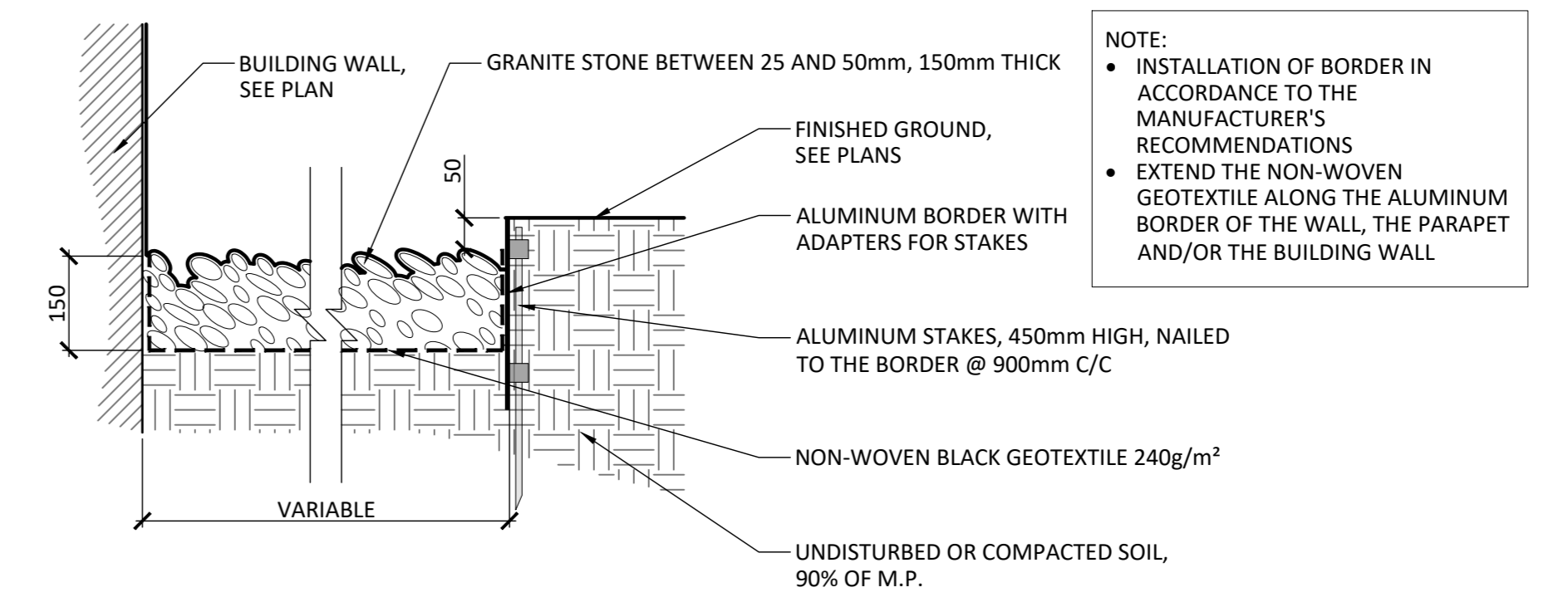
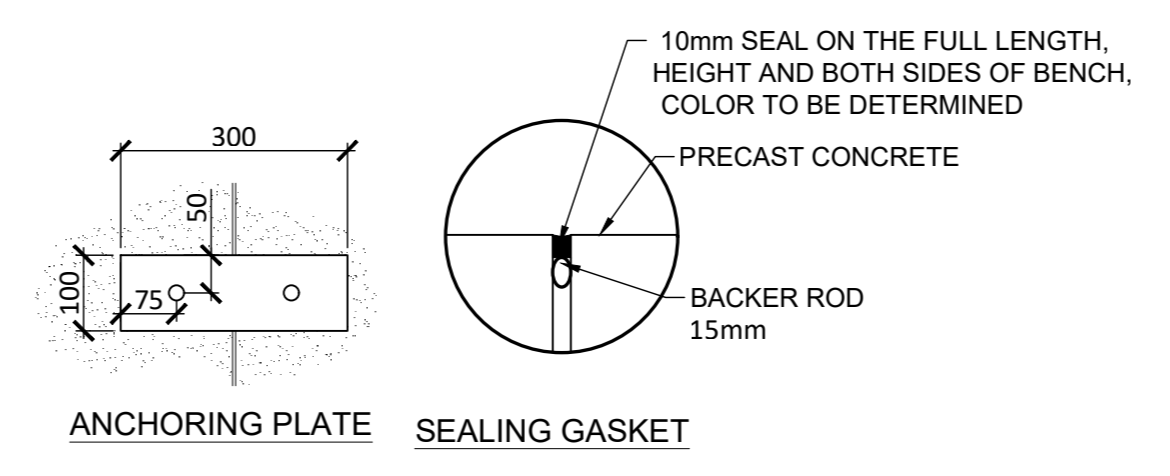
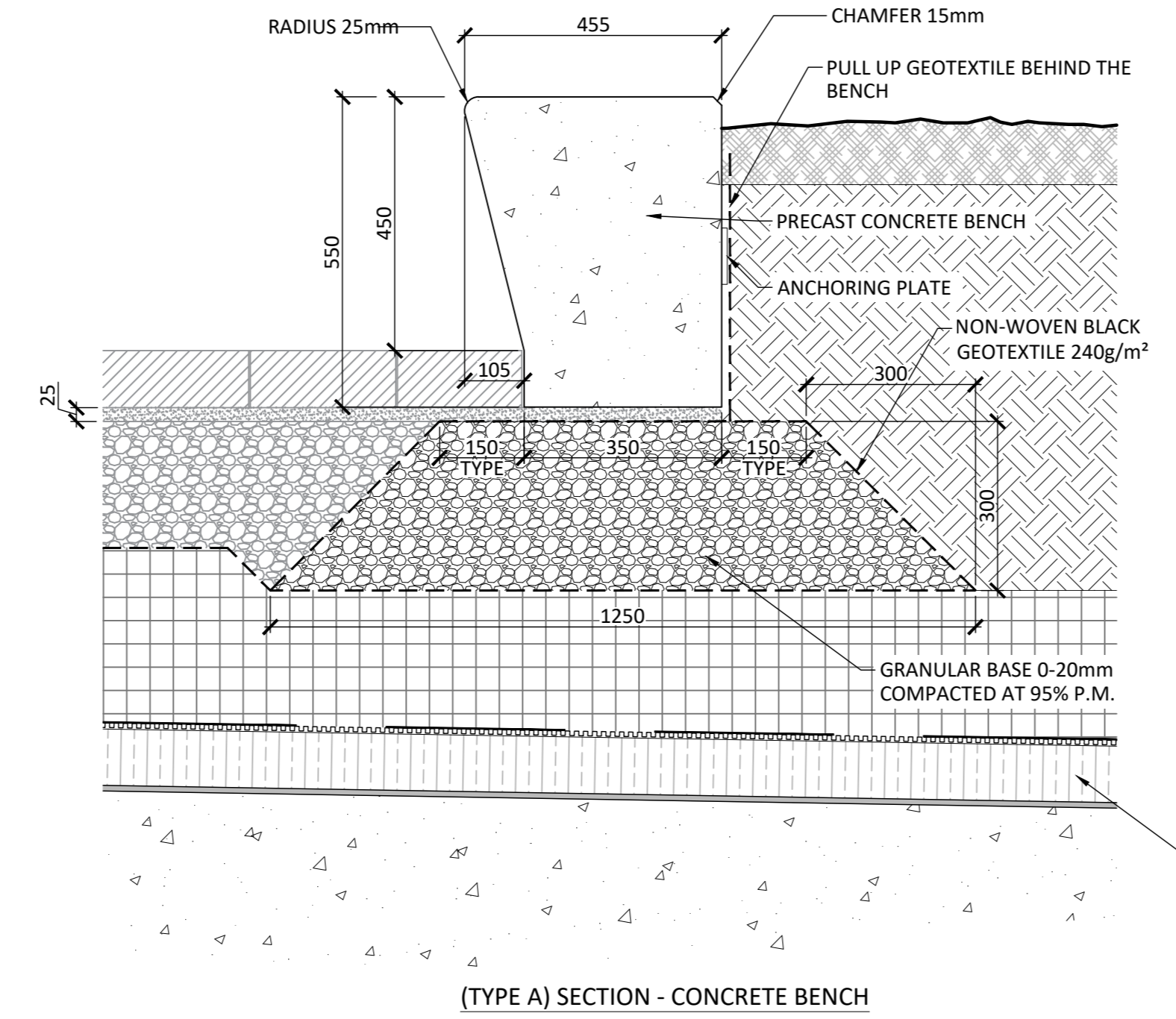
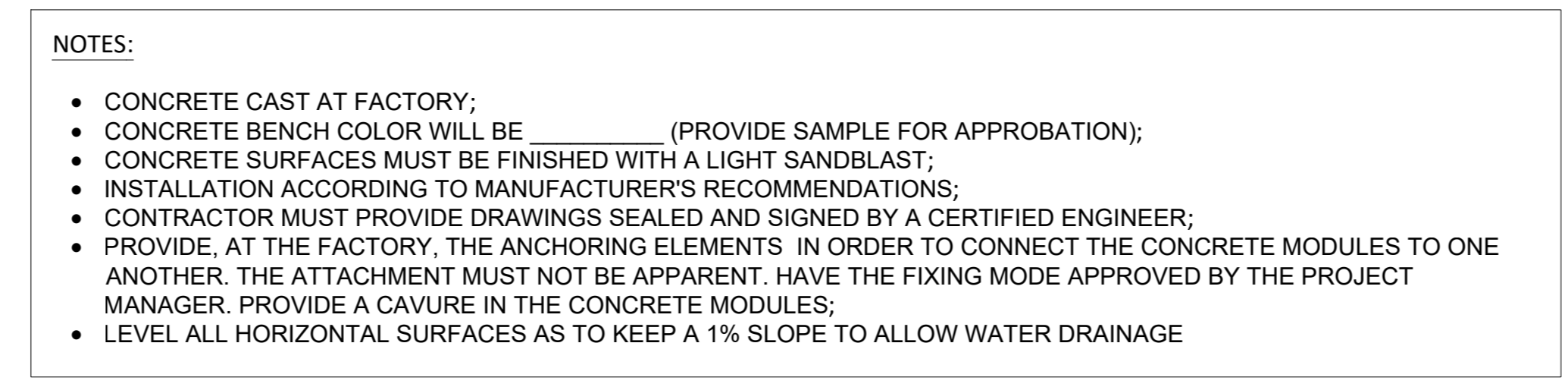
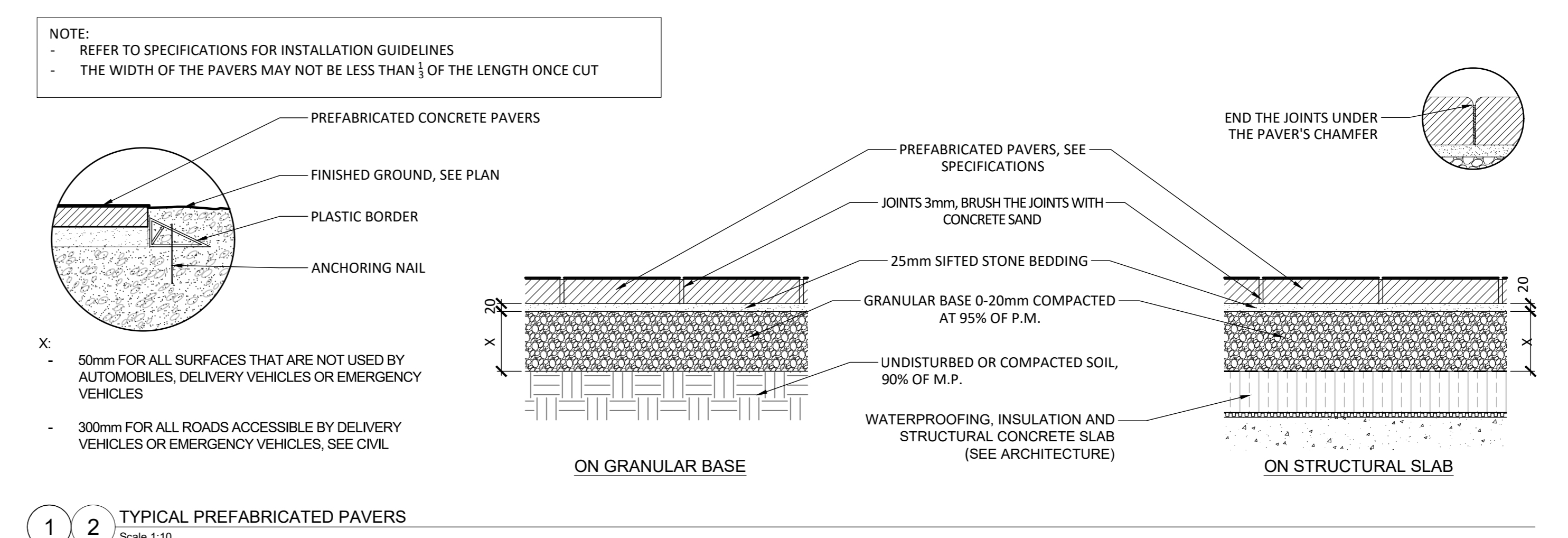
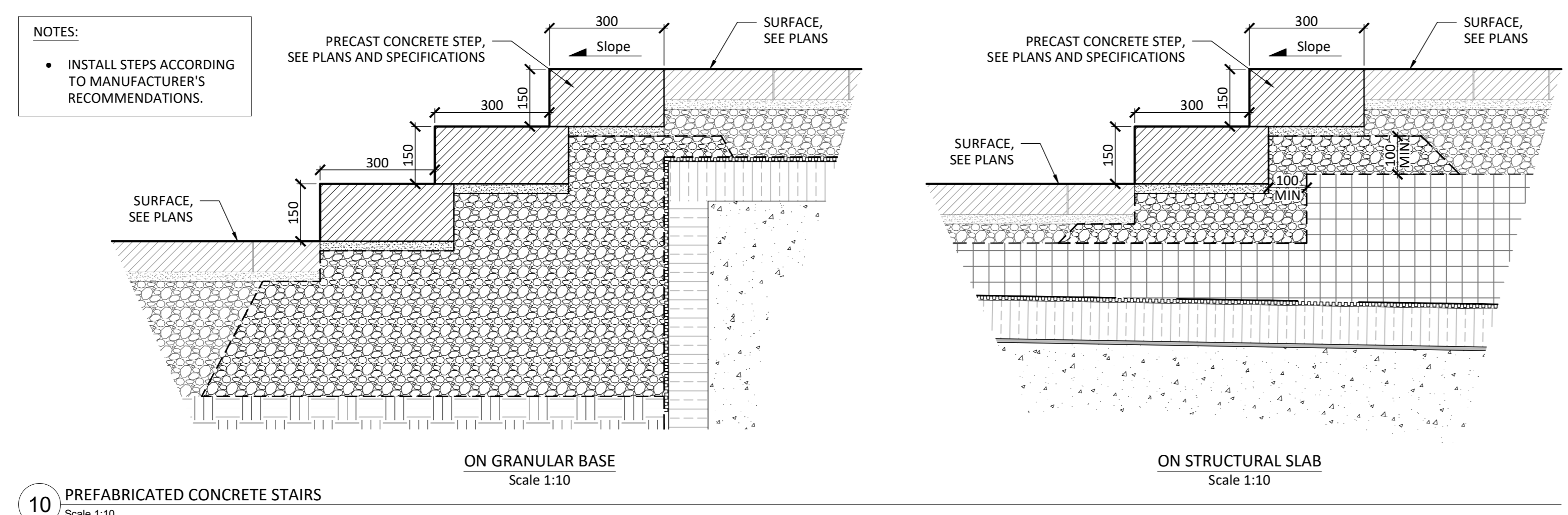
Project name
2026 Scott Street
File Number: 0307-12-23-0019
Plan Number: # 18076

Drawing title
PLANTING BED PLAN
Scale 1:150

Designed by
P.L. Richard
Drawn by
A. Syedah
Approved by
S. Gallant
Date
March 2024

Sheet No.
AP-40
21-698

| No. | Description | Appr. | Date |
|-----|-------------------|-------|----------|
| 1 | Site Plan Control | S.G. | 23/02/22 |
| 2 | Site Plan Control | P.L. | 23/10/13 |
| 3 | Site Plan Control | P.L. | 24/03/25 |
| 4 | Site Plan Control | P.L. | 24/04/12 |



DO NOT USE FOR CONSTRUCTION

- Notes:
- The Contractor must verify all site existing conditions before beginning the work and inform the Project Director of any errors, omissions or contradictions.
 - Existing grades indicated on the plan come from the survey provided by the owner.
 - The Contractor must not cut down any existing vegetation without the approval of the Project Director.
 - Implementation of the works on site must be approved by the Project Director.
 - The Contractor must use the CAD file for implementation of all work.
 - The contractor must verify the amounts specified in the schedule and notify the landscape architect of any errors, omissions or contradictions before the close of the bid.

PROJET | PAYSAGE

24 Mont-Royal O. Bureau 801, Montréal, Québec H2T 2S2
T: 514-849-7700 F: 514-849-2027 info@projetpaysage.com

Professional seal

Project name:
2026 Scott Street
File Number: 007-12-23-0019
Plan Number: #18076

Drawing title:
CONSTRUCTION DETAILS

Scale: **VARIABLE**

Designed by:
P.L. Richard

Drawn by:
A. Syedah

Approved by:
S. Gallant

Date:
March 2024

Sheet No.: **AP-50**

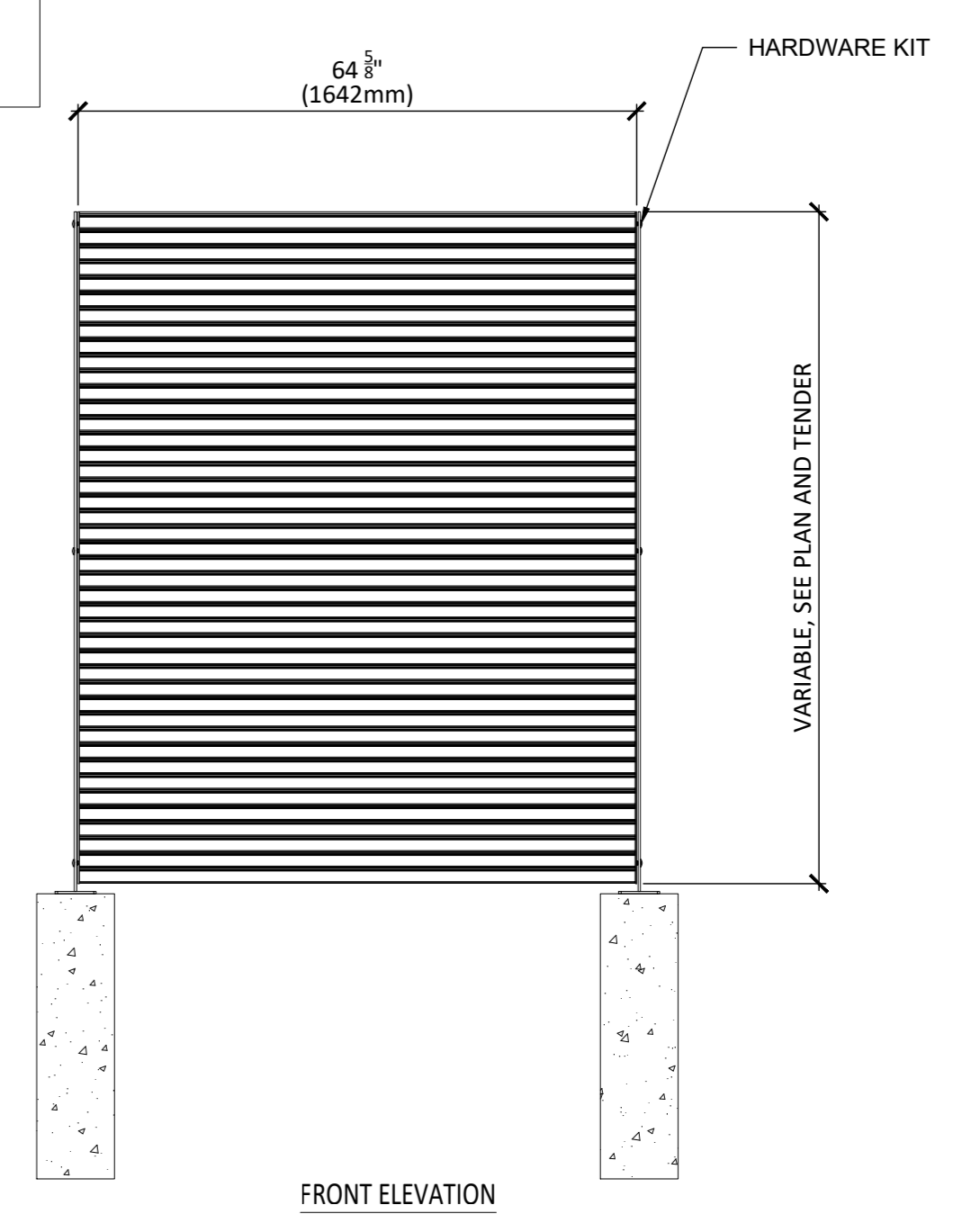
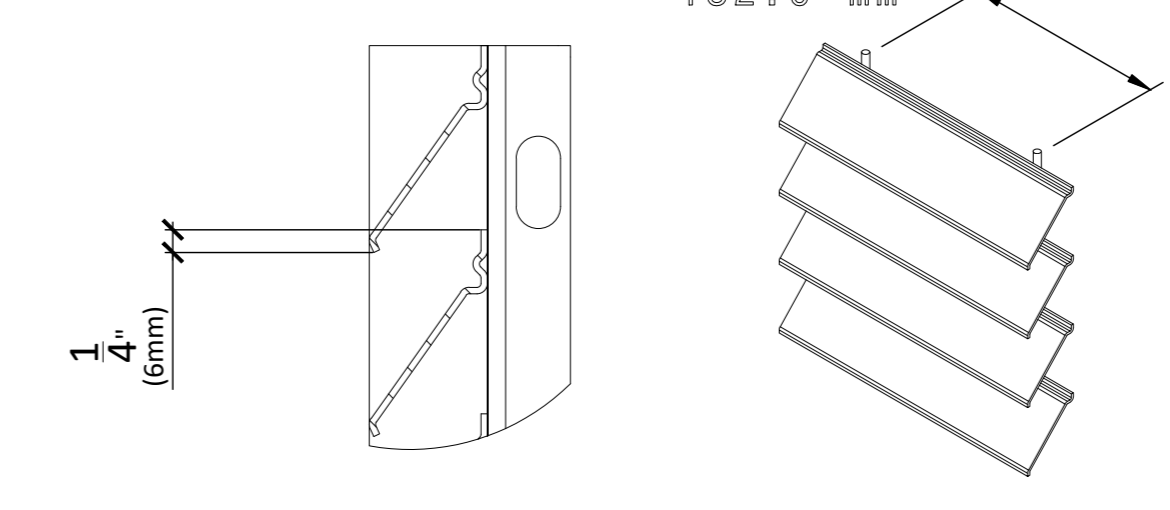
21-698

| Revisions | | | |
|-----------|-------------------|-------|----------|
| No | Description | Appr. | Date |
| 1 | Site Plan Control | S.G. | 23/02/22 |
| 2 | Site Plan Control | P.L. | 23/10/13 |
| 3 | Site Plan Control | P.L. | 24/03/25 |
| 4 | Site Plan Control | P.L. | 24/04/12 |
| | | | |
| | | | |
| | | | |
| | | | |
| | | | |
| | | | |
| | | | |
| | | | |
| | | | |
| | | | |
| | | | |
| | | | |
| | | | |
| | | | |
| | | | |
| | | | |
| | | | |

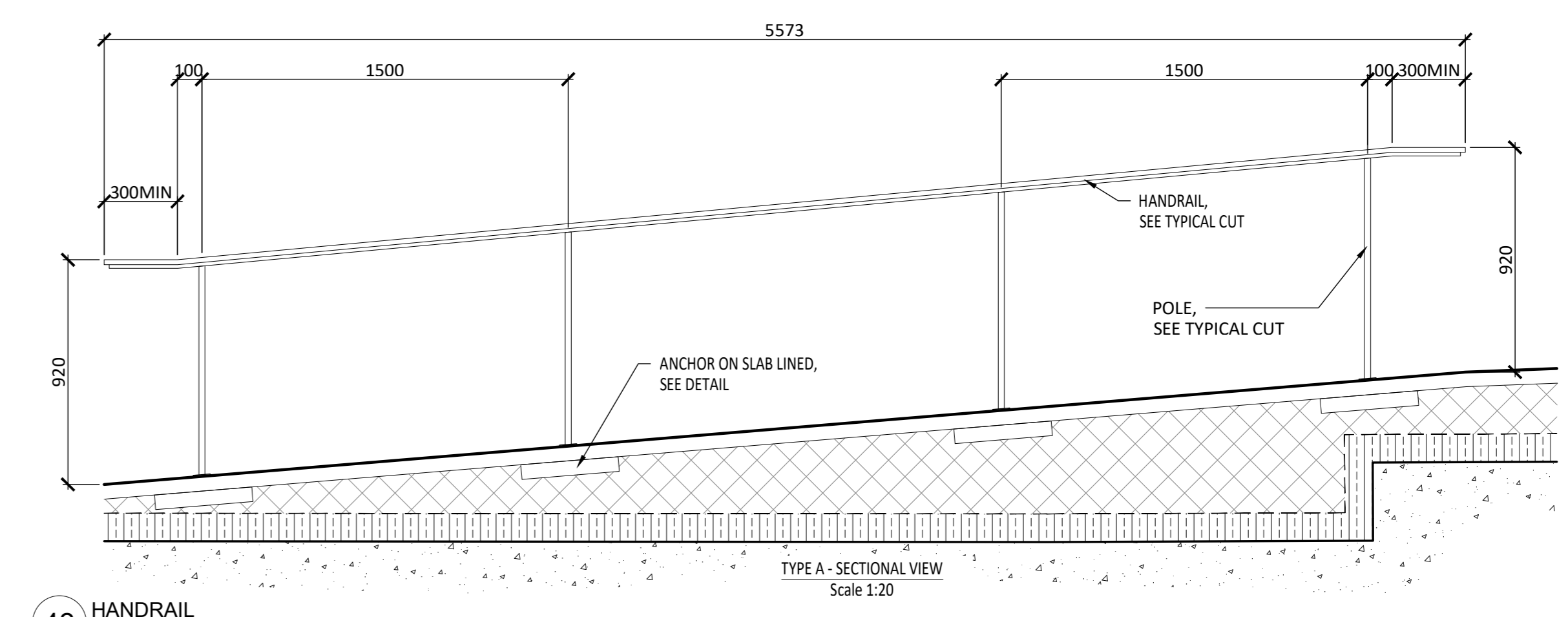
DO NOT USE FOR CONSTRUCTION

NOTES:
 • PROVIDE WORKSHOP DRAWING TO THE LANDSCAPE ARCHITECT FOR APPROVAL
 • INSTALLATION TO BE COMPLETED IN ACCORDANCE WITH MANUFACTURERS SPECIFICATIONS.
 • SEE TENDER FOR COLOR SPECIFICATION

| | |
|--------------------|---------------------------------|
| PANEL HEIGHT | NUMBER OF BRACKET KITS PER POST |
| VARIABLE, SEE PLAN | 3 |
| HORIZONTAL LOUVERS | 0.08" THICK 2mm |
| VERTICAL FLAT | 2" x 11 GA 50mm x 3mm |
| VERTICAL WIRES | 8GA Ø4.06mm |



40 METAL FENCE TYP. 2.0M OF HEIGHT
Scale 1:20



42 HANDRAIL
Scale 1:20

- Notes :
- The Contractor must verify all site existing conditions before beginning the work and inform the Project Director of any errors, omissions or contradictions.
 - Existing grades indicated on the plan come from the survey provided by the owner.
 - The Contractor must not cut down any existing vegetation without the approval of the Project Director.
 - Implantation of the works on site must be approved by the Project Director.
 - The Contractor must use the CAD file for implantation of all work.
 - The contractor must verify the amounts specified in the schedule and notify the landscape architect of any errors, omissions or contradictions before the close of the bid.

PROJET | PAYSAGE
 24 Mont-Royal O. Bureau 801. Montréal Québec H2T 2S2
 T: 514 849 7700 F: 514 849 2027 info@projetpaysage.com

Professional seal

Project name
 2026 Scott Street
 File Number: 037-12-25-0019
 Plan Number # 18076

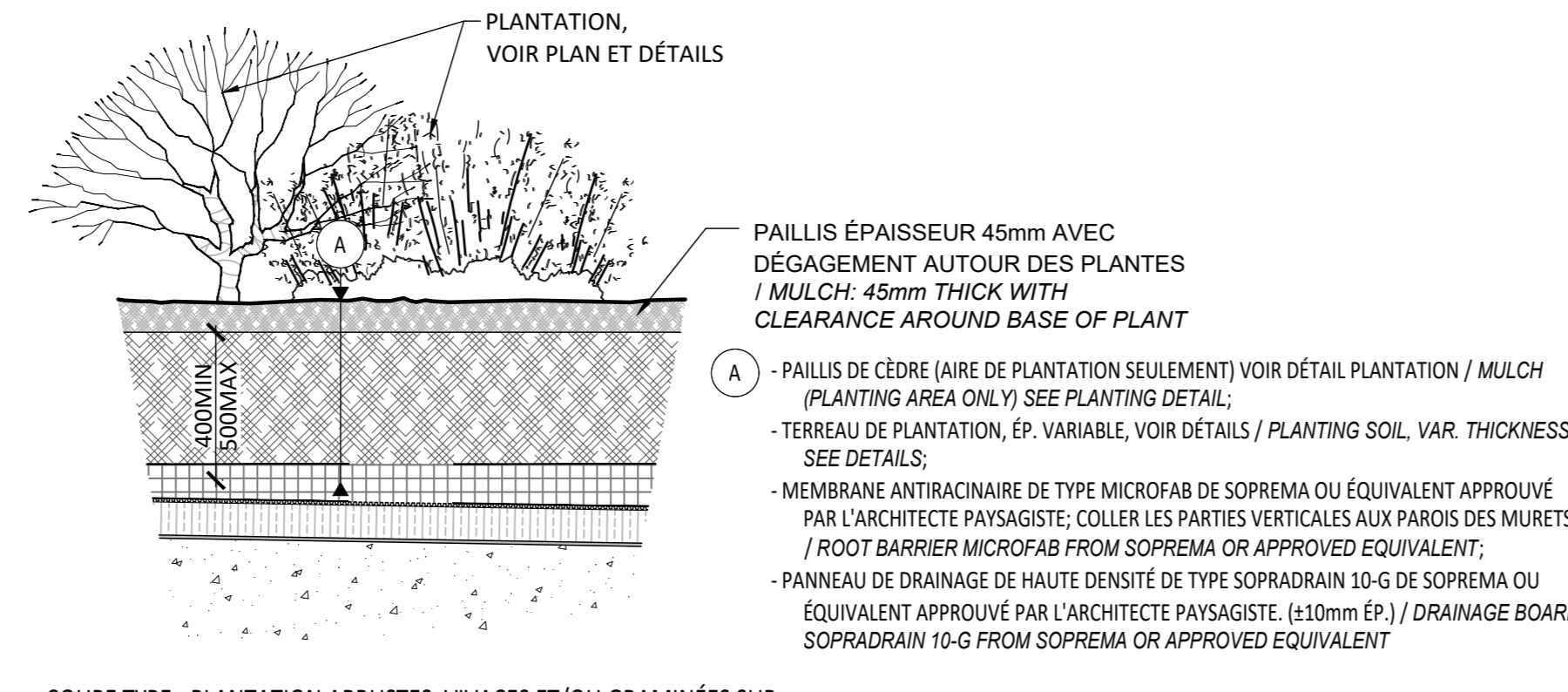
Drawing title
CONSTRUCTION DETAILS
 Scale VARIABLE

| | | |
|-----------------------------|-----------------------|-------|
| Designed by P.L. Richard | Drawn by A. Syedah | AP-51 |
| Approved by S. Gallant | Date March 2024 | |
| 21-698 | | |

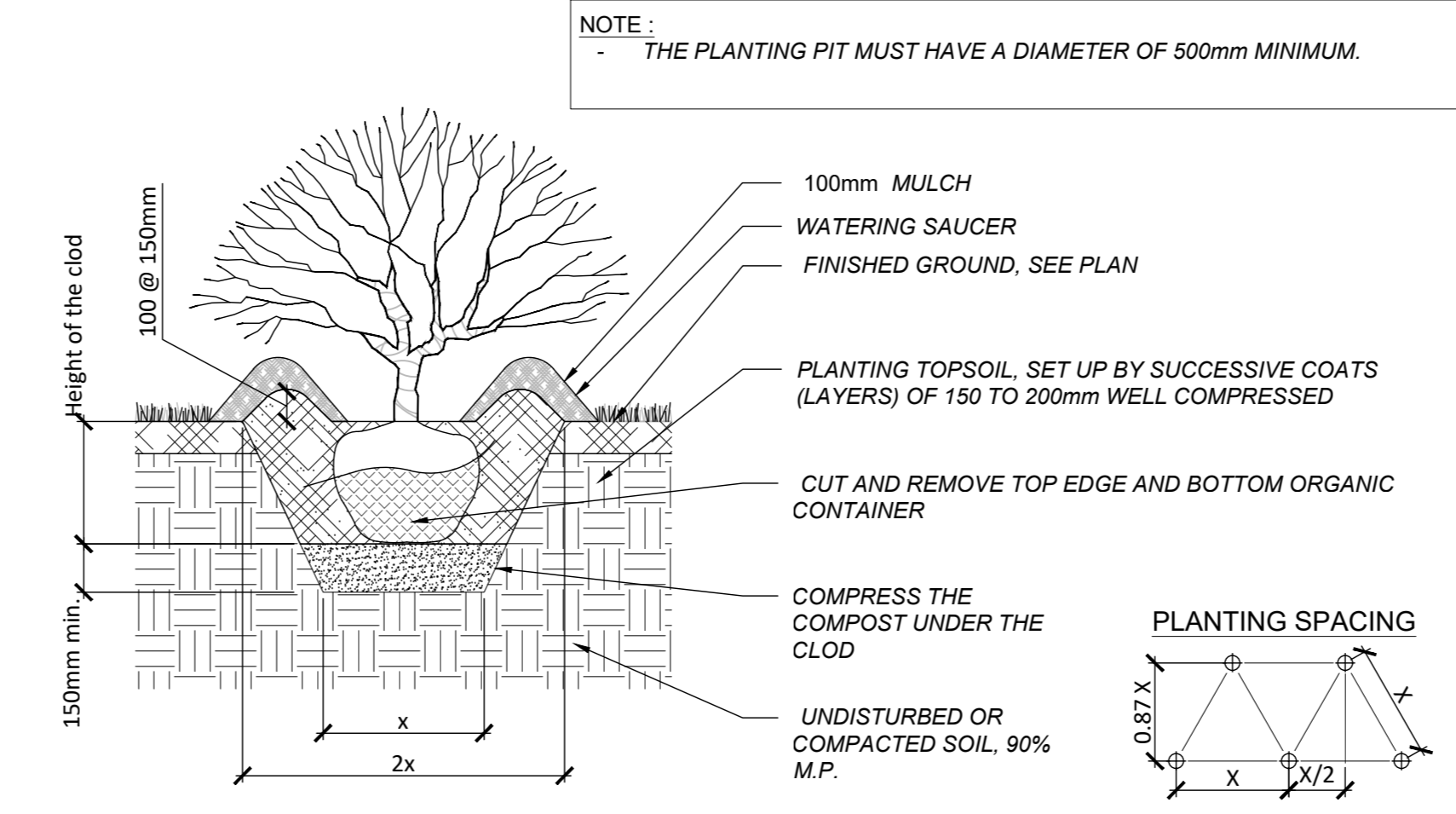
| Revisions | No. | Description | Appr. | Date |
|-----------|-------------------|-------------|-------|----------|
| 1 | Site Plan Control | S.G. | | 23/02/22 |
| 2 | Site Plan Control | P.L. | | 23/10/13 |
| 3 | Site Plan Control | P.L. | | 24/03/25 |
| 4 | Site Plan Control | P.L. | | 24/04/12 |
| | | | | |
| | | | | |
| | | | | |
| | | | | |
| | | | | |
| | | | | |
| | | | | |
| | | | | |
| | | | | |

DO NOT USE FOR CONSTRUCTION

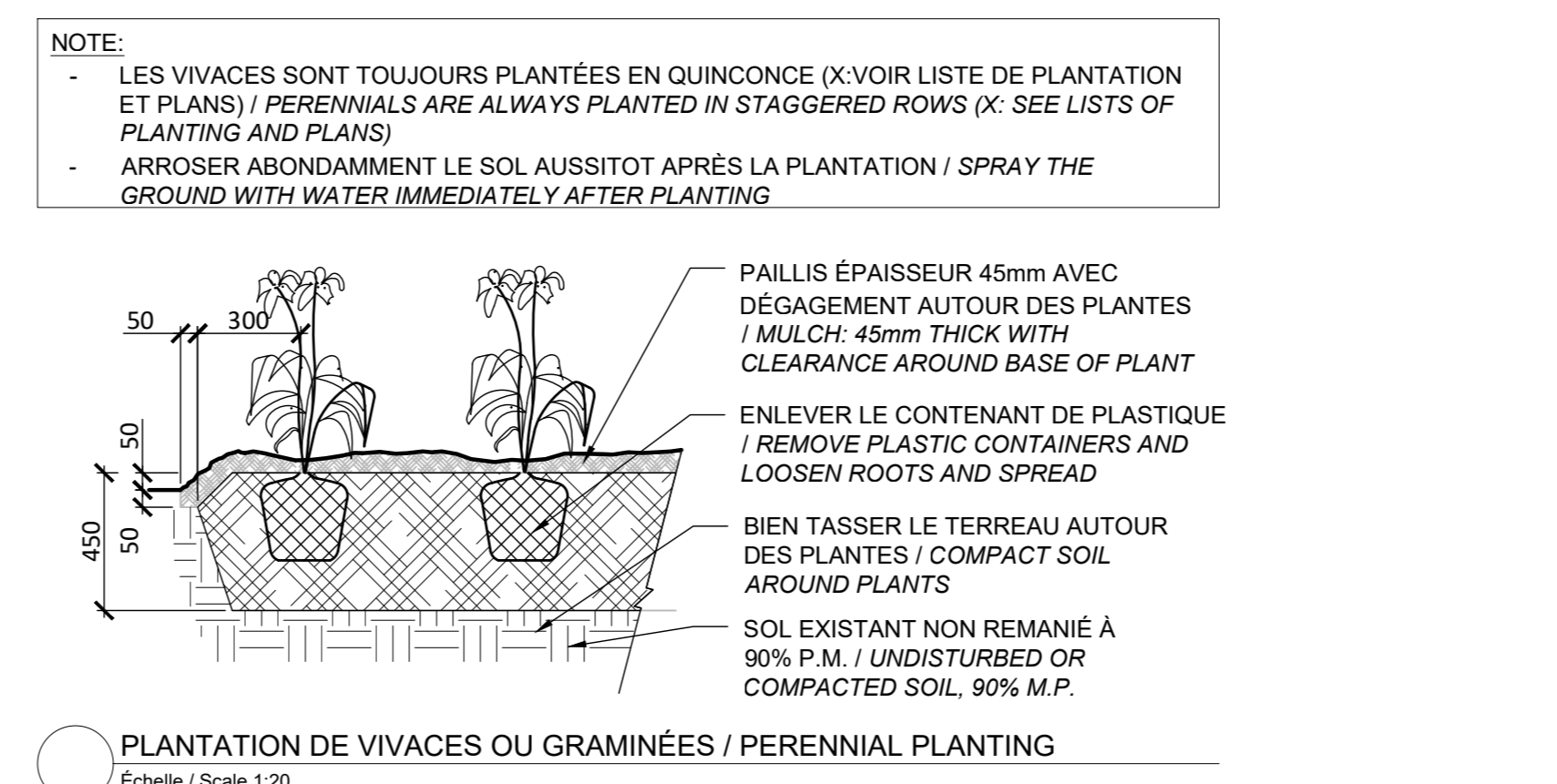
- NOTES:
- IT IS THE RESPONSIBILITY OF THE CONTRACTOR TO VALIDATE THE THICKNESS OF THE SOIL WITH THE BUILDING STRUCTURE
 - WITH THE EXCEPTION OF TREES, THERE MUST BE A MAXIMUM OF 500MM OF SOIL AND/OR GRANULAR FOUNDATION ON THE CONCRETE SLAB. FILL ALL SPACE ABOVE THE REQUIRED SOIL AND/OR GRANULAR FOUNDATION THICKNESS WITH RIGID INSULATION TO REACH THE FINISH GRADE INDICATED ON THE PLANS.
 - MAKE SURE TO HAVE A MINIMUM AND MAXIMUM OF 100MM OF SOIL. FILL ALL SPACE ADJACENT TREE WITH RIGID INSULATION, AS TO RESPECT THE MAXIMUM OF 500MM OF SOIL.
 - WHEN PLANTING SHRUBS, MAKE SURE TO HAVE A MINIMUM OF 500M OF SOIL.
 - WHEN PLANTING PERENNIALS AND/OR ORNAMENTAL GRASSES, MAKE SURE TO HAVE A MINIMUM OF 500M OF SOIL.
 - FOR SOD, ENSURE YOU HAVE A MINIMUM OF 150MM OF SOIL.
 - REGARDLESS OF THE TYPE OF SURFACE (PLANTING, PAVERS, EDGES OR WALLS), INSTALL ALL THE DRAINAGE PANEL ON THE ENTIRE SURFACE OF THE SLAB AND IN A CONTINUOUS MANNER.



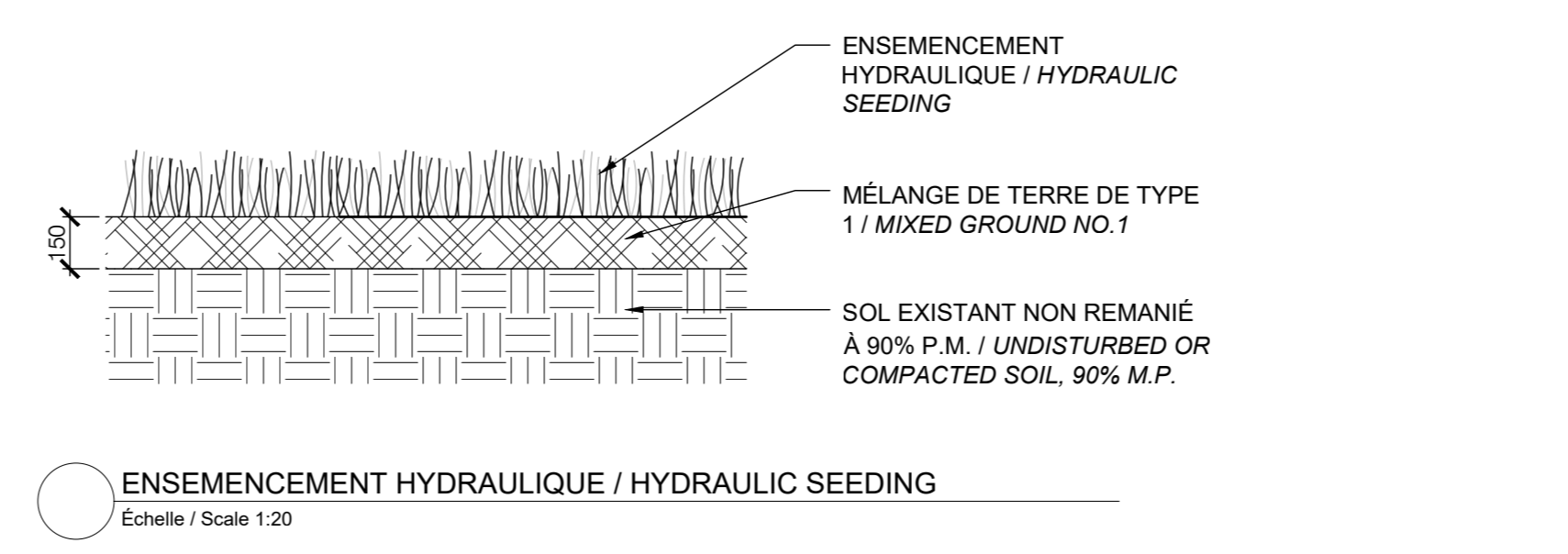
PLANTATION SUR DALLE / PLANTING ON CONCRETE SLAB
Echelle / Scale 1:20



SHRUB PLANTING
Scale 1:20

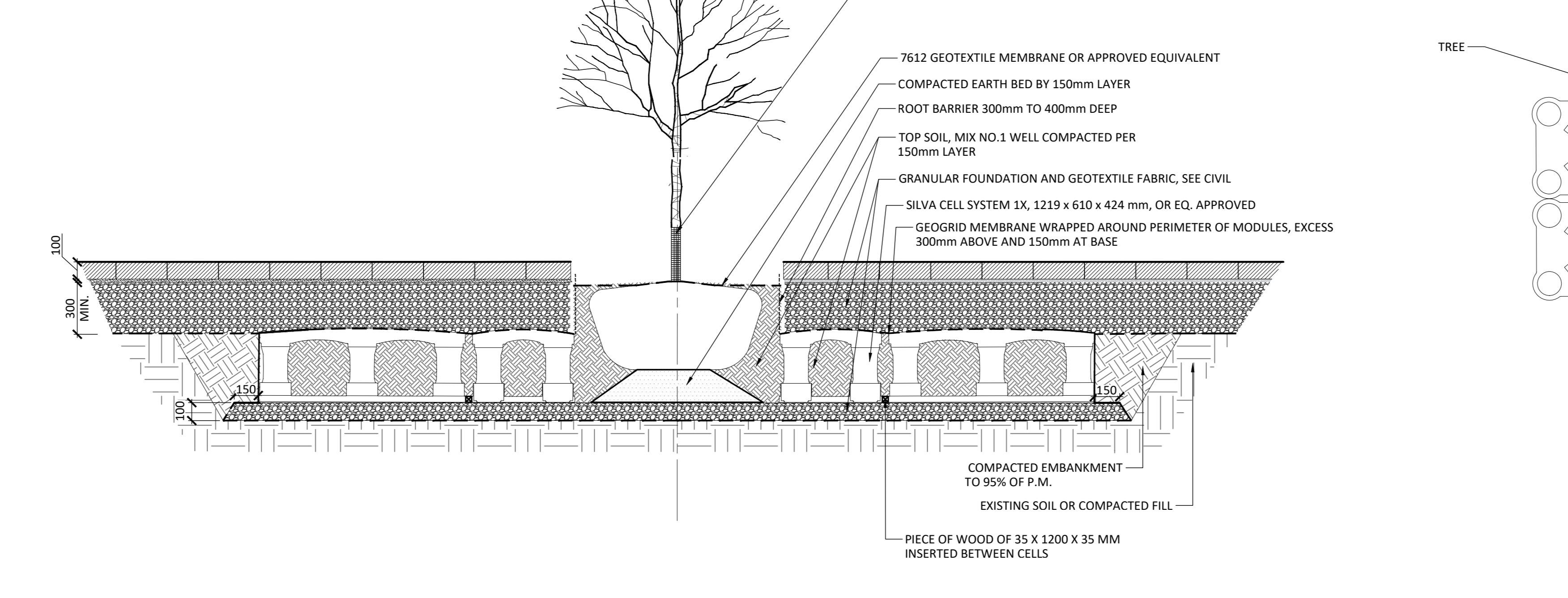


PLANTATION DE VIVACES OU GRAMINÉES / PERENNIAL PLANTING
Echelle / Scale 1:20



ENSEMENCEMENT HYDRAULIQUE / HYDRAULIC SEEDING
Echelle / Scale 1:20

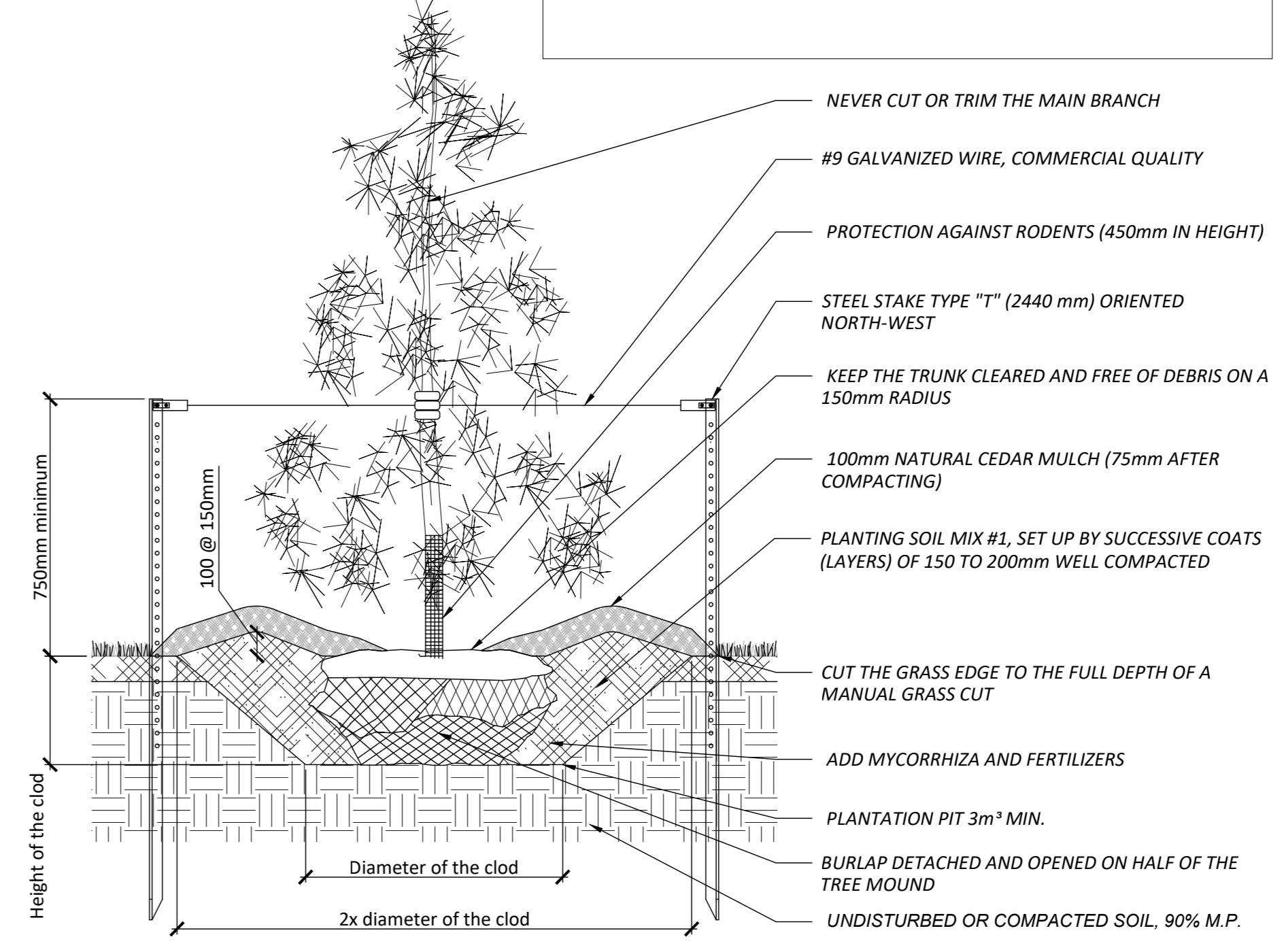
- NOTES:
- PROVIDE A MINIMUM OF 30M3 OF SOIL FOR EACH TREE IF THE DETAIL IS CHANGED.
 - THE TECHNICAL DETAIL HAS BEEN DESIGNED ACCORDING TO THE DIMENSIONS OF CIE DEEP ROOT SILVA CELLS 1X CELLS
 - THE SLOPE AT THE BASE OF THE SILVA CELL MODULES CANNOT EXCEED 10%
 - 25mm TO 150mm SPACING BETWEEN THE BASE OF SILVA CELL MODULES
 - AT EACH WHEELBASE, ATTACH THE GEOGRID TO THE MODULE WITH A CABLE TIE



SOIL CELL SYSTEM FOR TREE PLANTING (DETAIL IN PROGRESS)
Echelle 1:20

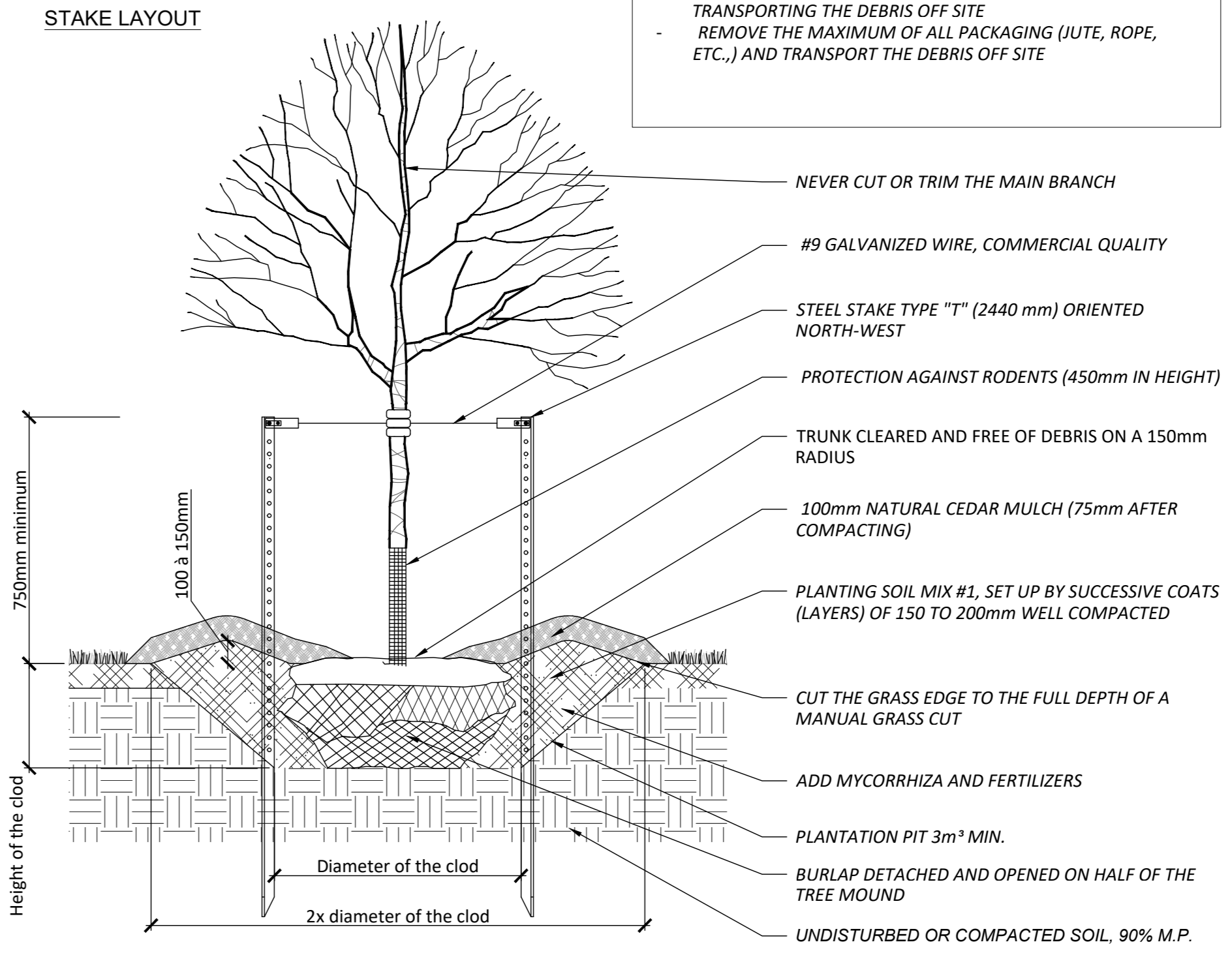
NOTE: THE PLANTING PIT MUST HAVE A DIAMETER OF 500mm MINIMUM.

STAKE LAYOUT



CONIFEROUS TREE PLANTING
Scale 1:20

STAKE LAYOUT



DECIDUOUS TREE PLANTING
Scale 1:20

- Notes:
- The Contractor must verify all site existing conditions before beginning the work and inform the Project Director of any errors, omissions or contradictions.
 - Existing grades indicated on the plan come from the survey provided by the owner.
 - The Contractor must not cut down any existing vegetation without the approval of the Project Director.
 - Implementation of the works on site must be approved by the Project Director.
 - The Contractor must use the CAD file for implantation of all work.
 - The contractor must verify the amounts specified in the schedule and notify the landscape architect of any errors, omissions or contradictions before the close of the bid.

PROJET | PAYSAGE
24 Mont-Royal O. Bureau 801. Montréal Québec H2T 2S2
T: 514.849.7700 F: 514.849.2027 info@projetpaysage.com

Professional seal

Project name

2026 Scott Street
File Number: 037-12-23-0019
Plan Number: #18076

Drawing title

PLANTING DETAILS

Scale VARIABLE

Designed by: P.L. Richard
Checked by: A. Syedah
Approved by: S. Gallant
Date: March 2024

Project No.

AP-52

21-698