



3	REV. FOR SPC COMMENTS	231013
2	REV. FOR SPC COMMENTS	230721
1	ISSUED FOR SITE PLAN CONTROL	230504

no revisions _____ date _____

stamp | timbre _____



architect | architecte



general notes | note générale

- CONTRACTOR SHALL CHECK AND VERIFY ALL DIMENSIONS AND REPORT ALL ERRORS AND OMISSIONS TO THE ARCHITECT.
- DO NOT SCALE THE DRAWINGS.
- NOT FOR CONSTRUCTION UNITS, SIGNED BY THE ARCHITECT.

project title

360 LAURIER AVE W
PROPOSED MIXED-USE RENOVATION

360 LAURIER AVE W | OTTAWA | ON | K1P 1C8

drawing title | titre du dessin

NORTH (LAURIER AVE W) ELEVATION

project number | numéro du projet **2225**

drawn | dessiné **JH**

checked | vérifié **JAP / MAR / JR**

date | date **11/28/22**

scale | échelle **1 : 100**



drawing number | numéro du dessin

A4-100

#xxxxx



Andrew McCreight
ANDREW MCCREIGHT
MANAGER, DEVELOPMENT REVIEW CENTRAL
PLANNING, REAL ESTATE & ECONOMIC DEVELOPMENT
DEPARTMENT, CITY OF OTTAWA

APPROVED
By Andrew McCreight at 2:43 pm, Apr 05, 2024

1 NORTH (LAURIER AVE W) ELEVATION
A4-100 1:100

MATERIAL LEGEND

TAG	DESCRIPTION	TAG	DESCRIPTION	TAG	DESCRIPTION	TAG	DESCRIPTION	TAG	DESCRIPTION	TAG	DESCRIPTION		
1	CLEAR GLASS (WINDOW), COLOUR TBD, DOUBLE GLAZED, LOW E COATING	4	ALUMINUM PROFILED CLADDING.	7	NOT USED.	10	ACOUSTICAL LOUVRES AT MECHANICAL PENTHOUSE.	13	CLEAR GLASS (CURTAIN WALL), COLOUR TBD, DOUBLE GLAZED, LOW E COATING.	16	METAL EXTRUSION CANOPY, EXISTING CANOPY TO RECEIVE NEW FINISHES.	19	ALLOW FOR NEW PUNCHED WINDOWS IN EXISTING PRECAST PANEL OPENINGS WHERE OPENINGS ARE NOT OBSTRUCTED BY COLUMNS.
2	EXTERIOR LIGHTING	5	5'-0" HIGH GLASS GUARDS, WITH BIRD FRIENDLY GLASS - AS PER CITY BIRD SAFE GUIDELINES.	8	NOT USED.	11	ENTRANCE TO UNDERGROUND PARKING, TO PEDESTRIAN LIGHTING AND ARCHITECTURAL FEATURES.	14	COLOURED GLASS FILM (WINDOW), COLOUR TBD, DOUBLE GLAZED, LOW E COATING.	17	EXTERIOR GLASS PATIO DOORS, COLOUR TBD, DOUBLE GLAZED, LOW E COATING.	20	SPA ENCLOSURE.
3	EXTERIOR GLASS GUARD, COLOUR TBD.	6	METAL SIGNAGE.	9	EXISTING RIB PROFILED PRECAST PANEL.	12	SPANDREL PANEL.	15	EXISTING EXTERIOR BRICK.	18	CLEAR GLASS (PATIO DOORS), COLOUR TBD, DOUBLE GLAZED, LOW E COATING.	21	OPERABLE WINDOWS.

GENERAL NOTES:

- ALL REMAINING EXISTING WINDOWS TO BE REPLACED.
- ALLOW FOR INTAKE AND EXHAUST VENTS FOR SUITE FAN COIL UNITS, INTEGRATED INTO NEW EXTERIOR WINDOWS, JULIET BALCONIES AND/OR EXTERIOR WALLS.
- COLOURED GLAZING TO BE FILM, INSTALLED ON SITE.
- BIRD FRIENDLY GLASS - AS PER CITY BIRD SAFE GUIDELINES. GUIDELINE 2 - TREATMENTS TO BE APPLIED TO A MINIMUM OF 90% OF THE GLASS WITHIN THE FIRST 16 METRES OF HEIGHT AND GLASS GUARDS ON LEVEL 12 AMENITY. OPERABLE WINDOWS TO HAVE A MECHANISM CAPABLE OF CONTROLLING THE FREE SWINGING OR SLIDING OF THE OPERABLE PART OF THE WINDOW SO AS TO LIMIT ANY CLEAR UNOBSTRUCTED OPENING TO A SIZE THAT WILL PREVENT THE PASSAGE OF A SPHERE HAVING A DIAMETER MORE THAN 100mm, OR BE PRETECTED BY A GUARD NO LESS THAN 1075mm.

D07-12-23-0055



LRL
ENGINEERING | INGENIEURIE



3	REV. FOR SPC COMMENTS	231013
2	REV. FOR SPC COMMENTS	230721
1	ISSUED FOR SITE PLAN CONTROL	230504

no revisions _____ date _____

stamp | timbre _____



architect | architecte



general notes | note générale

- CONTRACTOR SHALL CHECK AND VERIFY ALL DIMENSIONS AND REPORT ALL ERRORS AND OMISSIONS TO THE ARCHITECT.
- DO NOT SCALE THE DRAWINGS.
- NOT FOR CONSTRUCTION UNLESS SIGNED BY THE ARCHITECT.

project title

360 LAURIER AVE W
PROPOSED MIXED-USE RENOVATION

360 LAURIER AVE W | OTTAWA | ON | K1P 1C8

drawing title | titre du dessin

SOUTH ELEVATION

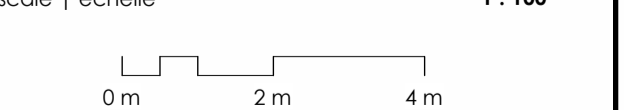
project number | numéro du projet **2225**

drawn | dessiné **JH**

checked | vérifié **JAP / MAR / JR**

date | date **11/28/22**

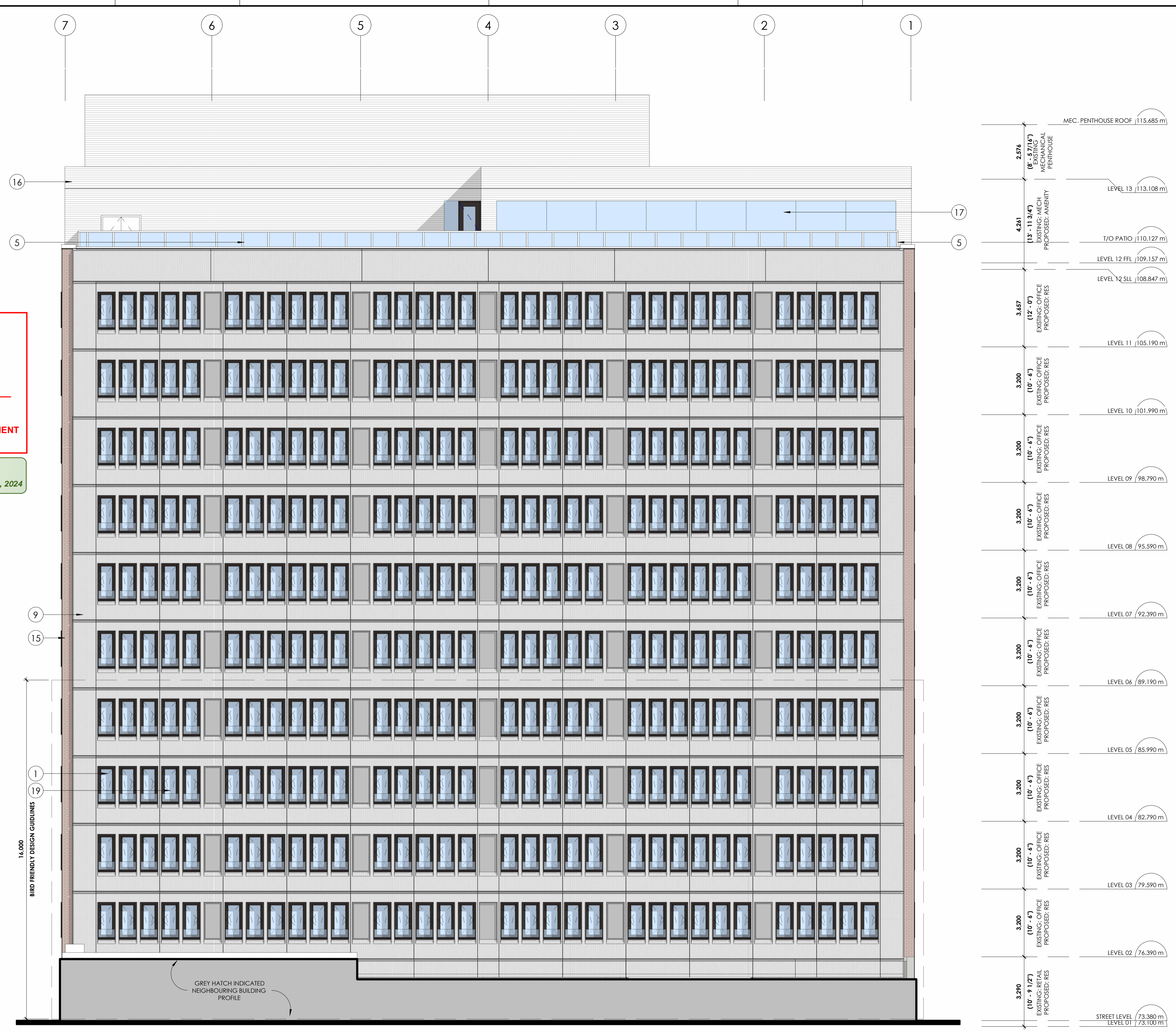
scale | échelle **1 : 100**



drawing number | numéro du dessin

A4-102

#XXXXX



Andrew McCreight
ANDREW MCCREIGHT
MANAGER, DEVELOPMENT REVIEW CENTRAL
PLANNING, REAL ESTATE & ECONOMIC DEVELOPMENT
DEPARTMENT, CITY OF OTTAWA

APPROVED
By Andrew McCreight at 2:43 pm, Apr 05, 2024

1 SOUTH ELEVATION
A4-102 1:100

TAG	DESCRIPTION	TAG	DESCRIPTION	TAG	DESCRIPTION	TAG	DESCRIPTION	TAG	DESCRIPTION	TAG	DESCRIPTION		
1	CLEAR GLASS (WINDOW), COLOUR TBD, DOUBLE GLAZED, LOW E COATING	4	ALUMINUM PROFILED CLADDING.	7	NOT USED.	10	ACOUSTICAL LOUVRES AT MECHANICAL PENTHOUSE.	13	CLEAR GLASS (CURTAIN WALL), COLOUR TBD, DOUBLE GLAZED, LOW E COATING.	16	METAL EXTRUSION CANOPY, EXISTING CANOPY TO RECEIVE NEW FINISHES.	19	ALLOW FOR NEW PUNCHED WINDOWS IN EXISTING PRECAST PANEL OPENINGS WHERE OPENINGS ARE NOT OBSTRUCTED BY COLUMNS.
2	EXTERIOR LIGHTING	5	5'-0" HIGH GLASS GUARDS, WITH BIRD FRIENDLY GLASS - AS PER CITY BIRD SAFE GUIDELINES.	8	NOT USED.	11	ENTRANCE TO UNDERGROUND PARKING, TO PEDESTRIAN LIGHTING AND ARCHITECTURAL FEATURES.	14	COLOURED GLASS FILM (WINDOW), COLOUR TBD, DOUBLE GLAZED, LOW E COATING.	17	EXTERIOR GLASS PATIO DOORS, COLOUR TBD, DOUBLE GLAZED, LOW E COATING.	20	SPA ENCLOSURE.
3	EXTERIOR GLASS GUARD, COLOUR TBD.	6	METAL SIGNAGE.	9	EXISTING RIB PROFILED PRECAST PANEL.	12	SPANDREL PANEL.	15	EXISTING EXTERIOR BRICK.	18	CLEAR GLASS (PATIO DOORS), COLOUR TBD, DOUBLE GLAZED, LOW E COATING.	21	OPERABLE WINDOWS.

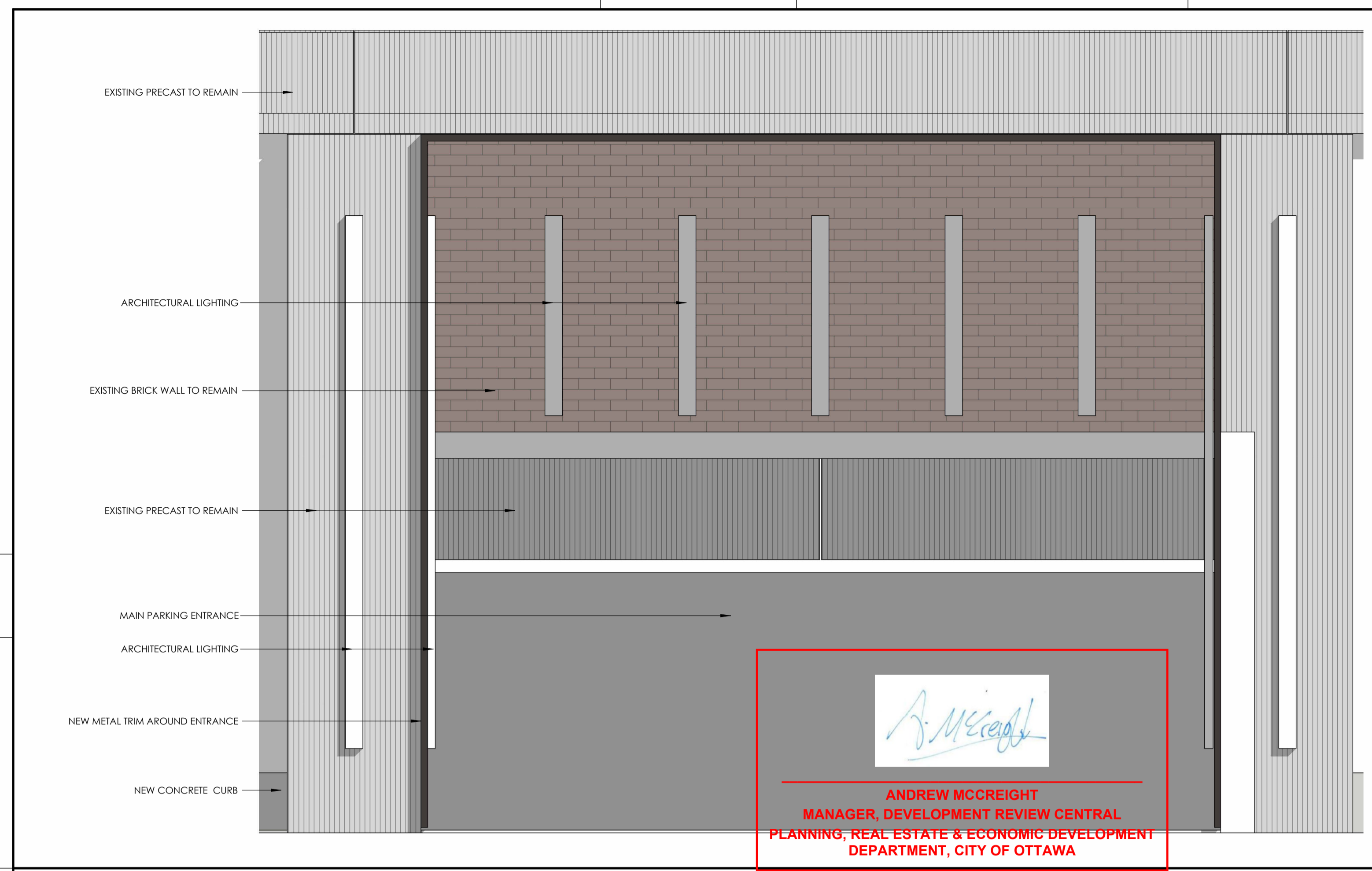
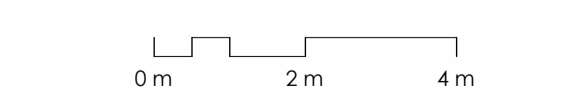
GENERAL NOTES:

- ALL REMAINING EXISTING WINDOWS TO BE REPLACED.
- ALLOW FOR INTAKE AND EXHAUST VENTS FOR SUITE FAN COIL UNITS, INTEGRATED INTO NEW EXTERIOR WINDOWS, JULIET BALCONIES AND/OR EXTERIOR WALLS.
- COLOURED GLAZING TO BE FILM, INSTALLED ON-SITE.
- BIRD FRIENDLY GLASS - AS PER CITY BIRD SAFE GUIDELINES. GUIDELINE 2 - TREATMENTS TO BE APPLIED TO A MINIMUM OF 90% OF THE GLASS WITHIN THE FIRST 16 METRES OF HEIGHT AND GLASS GUARDS ON LEVEL 12 AMENITY. OPERABLE WINDOWS TO HAVE A MECHANISM CAPABLE OF CONTROLLING THE FREE SWINGING OR SLIDING OF THE OPERABLE PART OF THE WINDOW SO AS TO LIMIT ANY CLEAR UNOBSTRUCTED OPENING TO A SIZE THAT WILL PREVENT THE PASSAGE OF A SPHERE HAVING A DIAMETER MORE THAN 100mm, OR BE PRETECTED BY A GUARD NO LESS THAN 1075mm.

D07-12-23-0055



- CONTRACTOR SHALL CHECK AND VERIFY ALL DIMENSIONS AND REPORT ALL ERRORS AND OMISSIONS TO THE ARCHITECT.
- DO NOT SCALE THE DRAWINGS.
- NOT FOR CONSTRUCTION UNITS, SIGNED BY THE ARCHITECT.



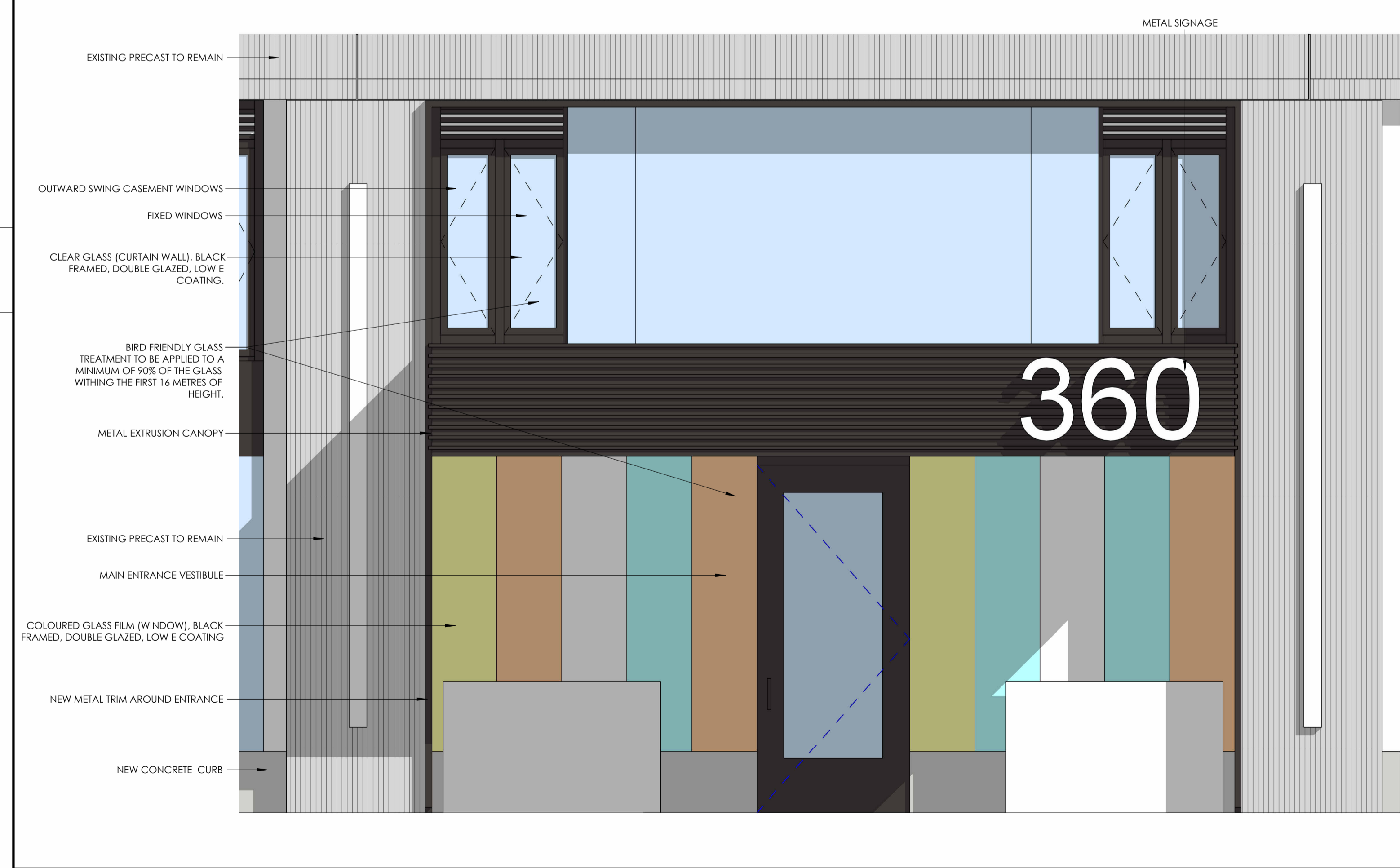
4 ENLARGED ELEVATION - PARKING ENTRANCE
A4-110 1:25 P400

APPROVED
By Andrew McCreight at 2:43 pm, Apr 05, 2024

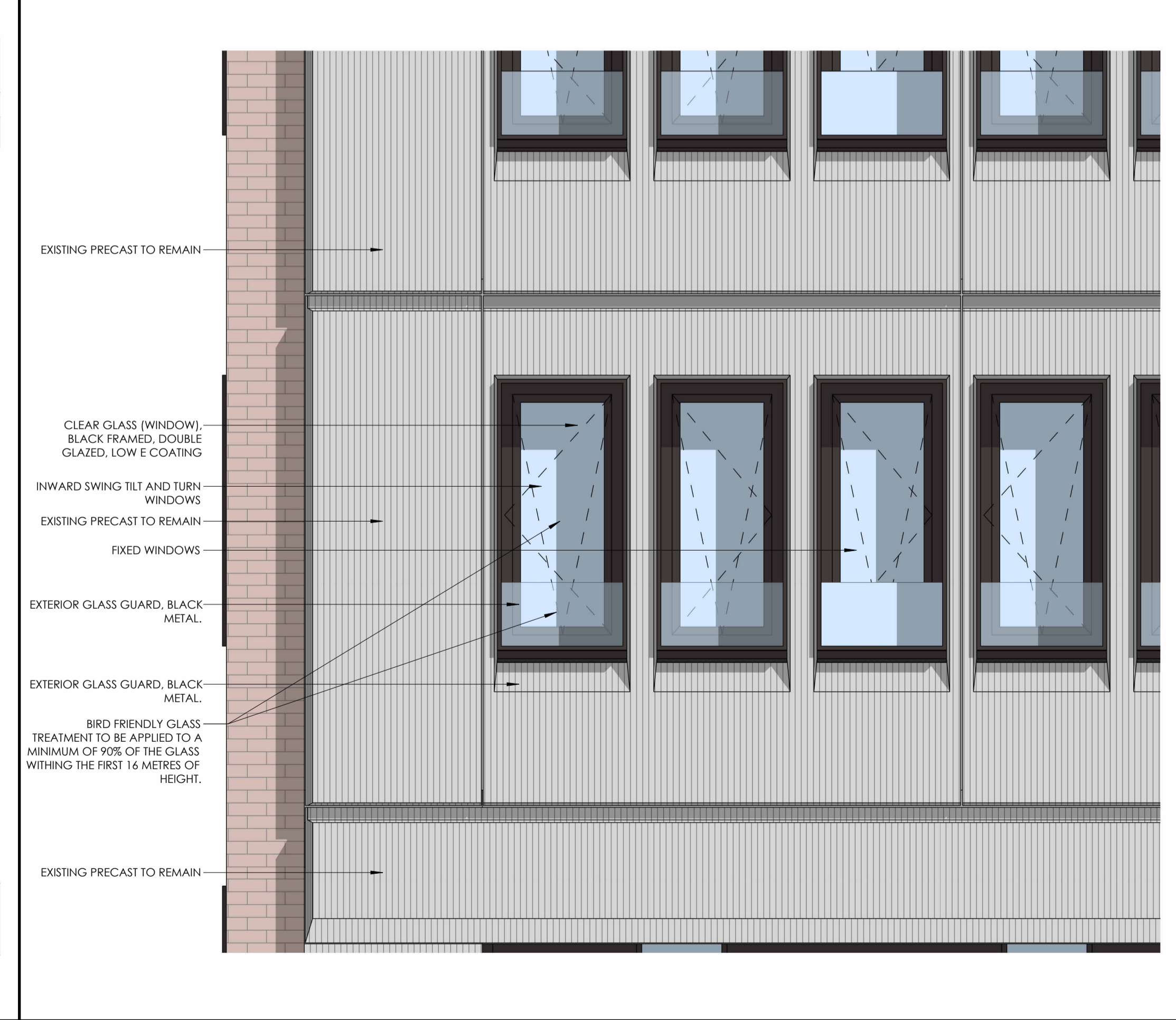
Andrew McCreight
ANDREW MCCREIGHT
MANAGER, DEVELOPMENT REVIEW CENTRAL
PLANNING, REAL ESTATE & ECONOMIC DEVELOPMENT
DEPARTMENT, CITY OF OTTAWA



2 ENLARGED ELEVATION - JULIET WINDOWS @ SUITES (LAURIER AVE. LEVEL 02)
A4-110 1:25 P400



3 ENLARGED ELEVATION - MAIN ENTRANCE
A4-110 1:25 P400



1 ENLARGED ELEVATION - TYPICAL PUNCHED WINDOWS @ SUITES (LEVEL 03 - 11)
A4-110 1:25 P400