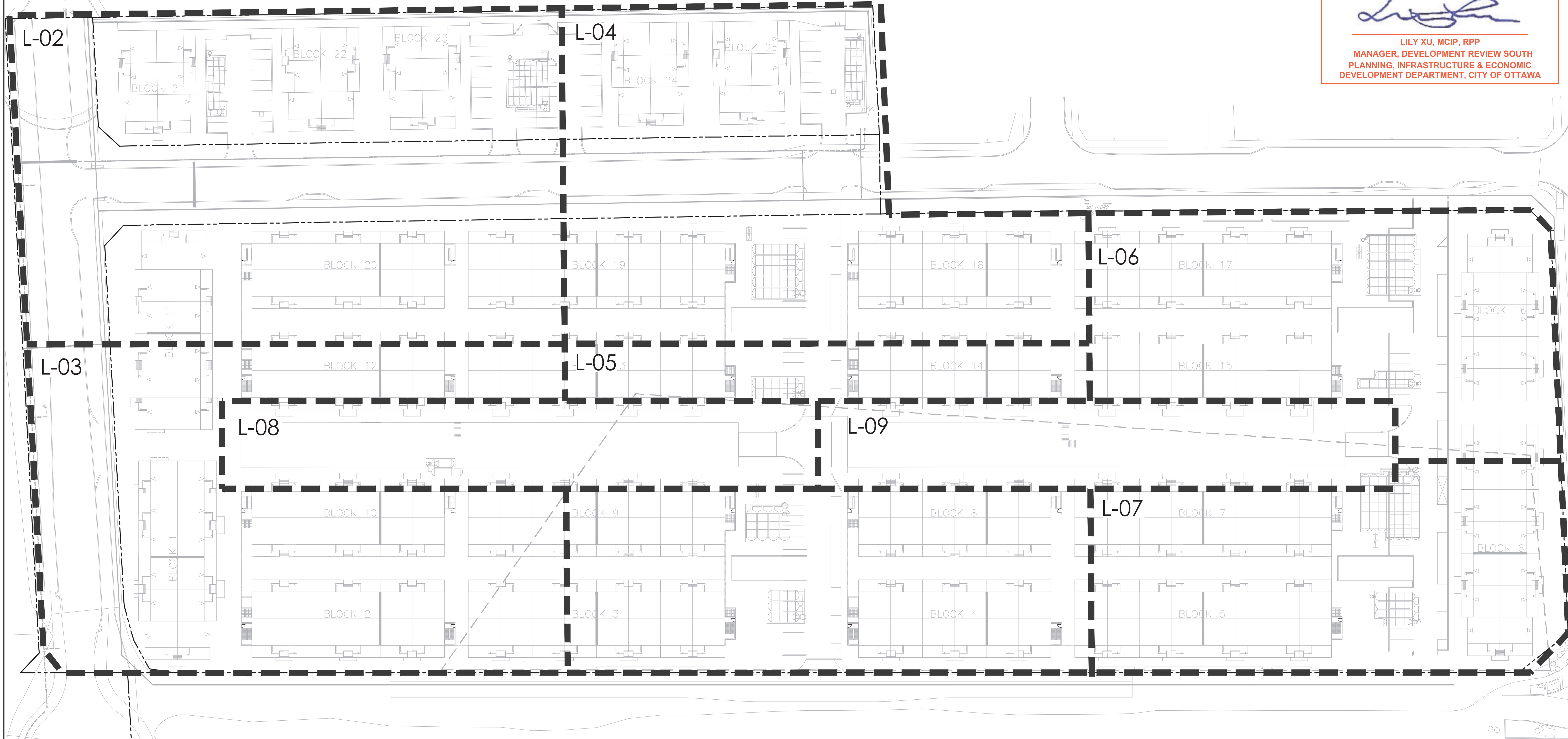


APPROVED
By Lily Xu at 11:37 am, Apr 03, 2024



LILY XU, MCIP, RPP
MANAGER, DEVELOPMENT REVIEW SOUTH
PLANNING, INFRASTRUCTURE & ECONOMIC
DEVELOPMENT DEPARTMENT, CITY OF OTTAWA

Contractor shall check all dimensions on the work and report any discrepancy to the Landscape Architect before proceeding. All drawings and specifications are the property of the Landscape Architect and must be returned at the completion of the work. This drawing is not to be used for construction until signed by the Landscape Architect.

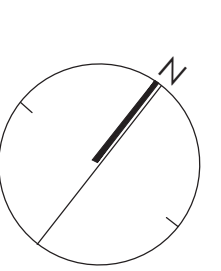


GENERAL NOTES:

- ALL WORKS AND MATERIALS SHALL CONFORM TO THE LATEST REVISION OF THE STANDARDS AND SPECIFICATIONS FOR THE CITY OF OTTAWA, ONTARIO PROVINCIAL STANDARD DRAWINGS (OPSD) AND SPECIFICATIONS (OPSS), WHERE APPLICABLE. LOCAL UTILITY STANDARDS AND MINISTRY OF TRANSPORTATION STANDARDS WILL APPLY WHERE REQUIRED.
- THE CONTRACTOR SHALL CONFIRM THE LOCATION OF ALL EXISTING UTILITIES WITHIN THE SITE AND ADJACENT WORK AREAS. THE CONTRACTOR SHALL BE RESPONSIBLE FOR PROTECTING ALL EXISTING UTILITIES TO THE SATISFACTION OF THE AUTHORITY HAVING JURISDICTION. THE CONTRACTOR SHALL BE RESPONSIBLE FOR THE REPAIR OR REPLACEMENT OF ANY SERVICES OR UTILITIES DISTURBED DURING CONSTRUCTION, TO THE SATISFACTION OF THE AUTHORITY HAVING JURISDICTION.
- ALL DIMENSIONS SHALL BE CHECKED AND VERIFIED IN THE FIELD BY THE CONTRACTOR PRIOR TO THE START OF CONSTRUCTION. ANY DISCREPANCIES SHALL BE REPORTED IMMEDIATELY TO THE ENGINEER. LOST TIME DUE TO FAILURE OF THE CONTRACTOR TO CONFIRM UTILITY LOCATIONS AND NOTIFY ENGINEER OF POSSIBLE CONFLICTS PRIOR TO CONSTRUCTION WILL BE AT THE CONTRACTOR'S EXPENSE.
- ANY AREAS BEYOND THE LIMIT OF THE SITE DISTURBED DURING CONSTRUCTION SHALL BE RESTORED TO ORIGINAL CONDITION OR BETTER TO THE SATISFACTION OF THE AUTHORITY HAVING JURISDICTION AT THE CONTRACTOR'S EXPENSE.
- ALL WORK SHALL BE COMPLETED IN ACCORDANCE WITH THE OCCUPATIONAL HEALTH AND SAFETY ACT AND REGULATIONS FOR CONSTRUCTION PROJECTS; THE GENERAL CONTRACTOR SHALL BE DEEMED TO BE THE 'CONSTRUCTOR' AS DEFINED IN THE ACT.
- ALL CONSTRUCTION SIGNAGE MUST CONFORM TO THE MINISTRY OF TRANSPORTATION OF ONTARIO MANUAL OF UNIFORM TRAFFIC CONTROL DEVICES PER LATEST AMENDMENT.
- THE CONTRACTOR IS ADVISED THAT WORKS BY OTHERS MAY BE ONGOING DURING THE PERIOD OF THIS CONTRACT. THE CONTRACTOR SHALL COORDINATE CONSTRUCTION ACTIVITIES TO PREVENT CONFLICTS.
- ALL DIMENSIONS ARE IN METRES UNLESS SPECIFIED OTHERWISE.
- THERE WILL BE NO SUBSTITUTION OF MATERIALS UNLESS PRIOR WRITTEN APPROVAL IS RECEIVED FROM THE ENGINEER.
- ALL CONSTRUCTION SHALL BE CARRIED OUT IN ACCORDANCE WITH THE RECOMMENDATIONS MADE IN THE GEOTECHNICAL REPORT.
- ALL SEWERS CONSTRUCTED WITH GRADES LESS THAN 1.0% SHALL BE INSTALLED USING LASER ALIGNMENT AND CHECKED WITH LEVEL INSTRUMENT PRIOR TO BACKFILLING.
- THE CONTRACTOR IS RESPONSIBLE FOR OBTAINING ALL PERMITS REQUIRED AND TO BEAR THE COST OF THE SAME.
- THE CONTRACTOR WILL BE RESPONSIBLE FOR ADDITIONAL BEDDING, OR ADDITIONAL STRENGTH PIPE IF THE MAXIMUM TRENCH WIDTH AS SPECIFIED BY OPSD IS EXCEEDED.
- THE CONTRACTOR WILL BE RESPONSIBLE FOR ADDITIONAL BEDDING, OR ADDITIONAL STRENGTH PIPE IF THE MAXIMUM TRENCH WIDTH AS SPECIFIED BY OPSD IS EXCEEDED.
- ALL PIPE / CULVERT SECTION SIZES REFER TO INSIDE DIMENSIONS.
- SHOULD DEEPLY BURIED ARCHAEOLOGICAL REMAINS BE FOUND ON THE PROPERTY DURING CONSTRUCTION ACTIVITIES, THE HERITAGE OPERATIONS UNIT OF THE ONTARIO MINISTRY OF CULTURE MUST BE NOTIFIED IMMEDIATELY.
- ALL NECESSARY CLEARING AND GRUBBING SHALL BE COMPLETED BY THE CONTRACTOR. REVIEW WITH CONTRACT ADMINISTRATOR AND THE CITY OF OTTAWA PRIOR TO ANY TREE CUTTING / REMOVAL.
- DRAWINGS SHALL BE READ IN CONJUNCTION WITH THE SITE PLAN.
- THE CONTRACTOR SHALL PROVIDE THE PROJECT ENGINEER ONE SET OF AS CONSTRUCTED SITE SERVICING AND GRADING DRAWINGS.
- BENCHMARKS: IT IS THE RESPONSIBILITY OF THE CONTRACTOR TO VERIFY THAT THE SITE BENCHMARK(S) HAS NOT BEEN ALTERED OR DISTURBED AND THAT ITS RELATIVE ELEVATION AND DESCRIPTION AGREES WITH THE INFORMATION DEPICTED ON THIS PLAN.

9	REVISION FOR FIFTH SUBMISSION	MAR 15/24
8	ISSUED FOR FIFTH SUBMISSION	FEB 13/24
7	ISSUED FOR THIRD SUBMISSION	OCT 13/23
6	RE-ISSUED FOR SECOND SUBMISSION	JUN 30/23
5	RE-ISSUED FOR SECOND SUBMISSION	MAY 31/23
4	ISSUED FOR SECOND SUBMISSION	APR 24/23
3	ISSUED FOR FIRST SUBMISSION	JUN 30/22
2	ISSUED FOR CLIENT REVIEW	JUN 10/22
1	ISSUED FOR CLIENT REVIEW	MAY 16/22

Revision
City Approval Stamp



NAK
design strategies

1285 WELLINGTON STREET WEST, OTTAWA, ON K1Y 3A8 CANADA
T 613.237.2345 F 613.237.4423 OTTAWA@NAK-DESIGN.COM



Project

BARRHAVEN TOWN CENTRE

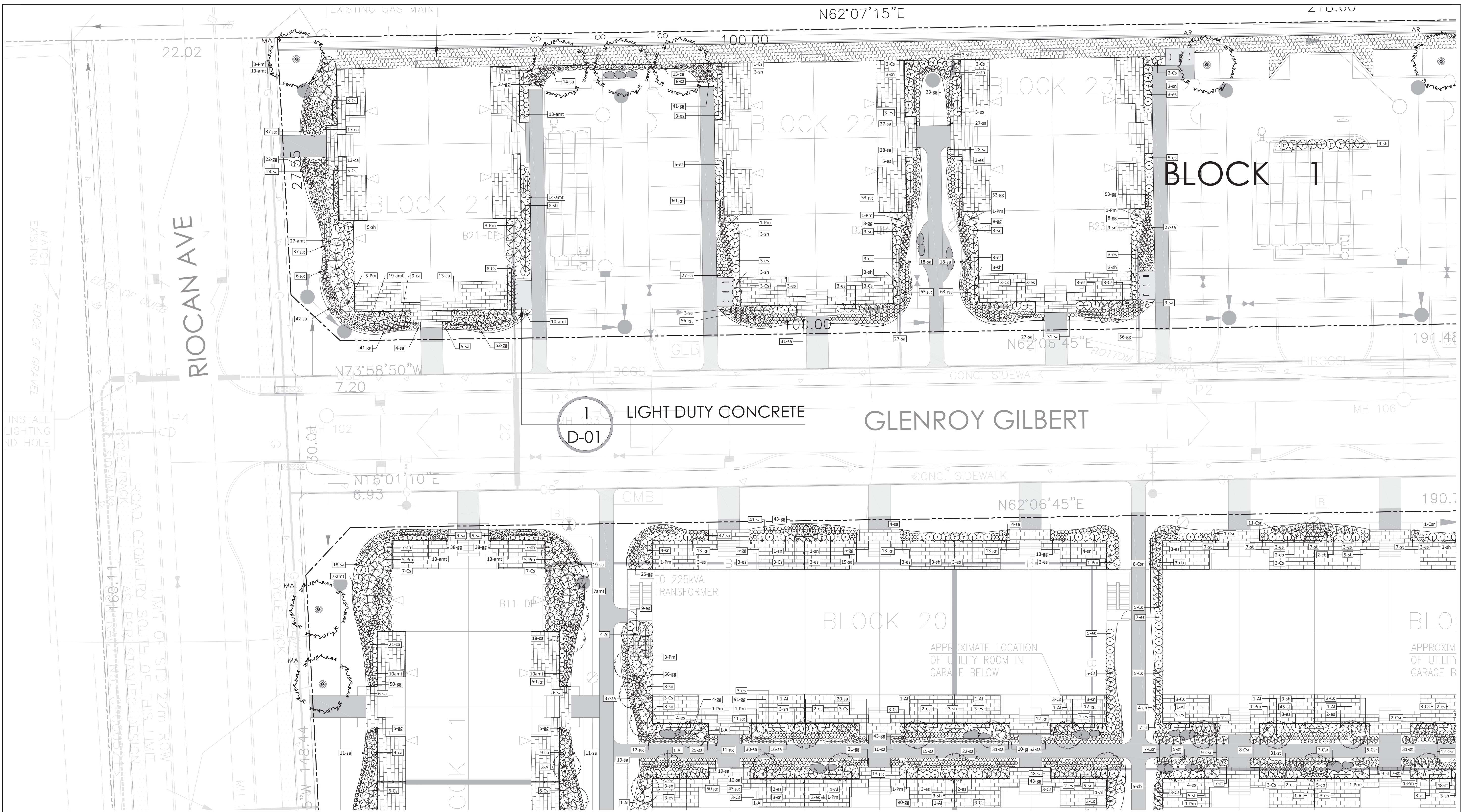
Title

LANDSCAPE PLAN

Date OCTOBER 2023
Scale 1:500
Drawn EL
Checked SC
Job No. 21-195

Sheet

L-01



Contractor shall check all dimensions on the work and report any discrepancy to the Landscape Architect before proceeding. All drawings and specifications are the property of the Landscape Architect and must be returned at the completion of the work. This drawing is not to be used for construction until signed by the Landscape Architect.

LEGEND

- PROPERTY LINE
- DECORATIVE FENCE

PLANTING

- DECIDUOUS STREET TREE (N.I.C.)
- MEDIUM DECIDUOUS TREE
- CONIFEROUS TREE
- TREE FORMED SHRUB
- DECIDUOUS SHRUB
- CONIFEROUS SHRUB
- ORNAMENTAL GRASSES
- PERENNIALS

SURFACING

- RIVER STONE
- UNIT PAVERS LIGHT DUTY PAVING
- UNIT PAVERS HEAVY DUTY PAVING
- CIP CONCRETE LIGHT DUTY PAVING
- ASPHALT LIGHT DUTY PAVING

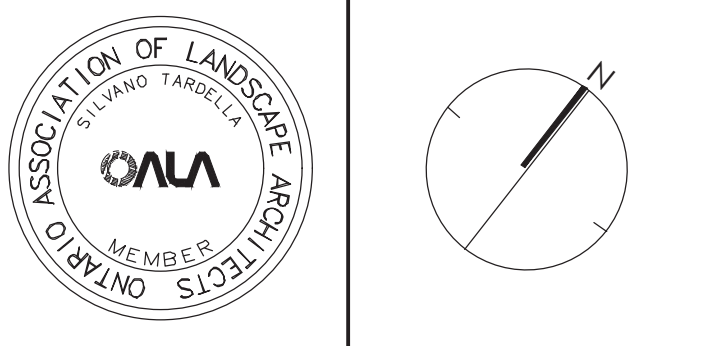
AMENITIES

- BIKE RACK
- GRANITE SEATING BOULDERS

PLANT KEY

- PLANT SPECIES
- QUANTITY

9	REVISION FOR FIFTH SUBMISSION	MAR 15/24
8	ISSUED FOR FIFTH SUBMISSION	FEB 13/24
7	ISSUED FOR THIRD SUBMISSION	OCT 13/23
6	RE-ISSUED FOR SECOND SUBMISSION	JUN 30/23
5	RE-ISSUED FOR SECOND SUBMISSION	MAY 31/23
4	ISSUED FOR SECOND SUBMISSION	APR 24/23
3	ISSUED FOR FIRST SUBMISSION	JUN 30/22
2	ISSUED FOR CLIENT REVIEW	JUN 10/22
1	ISSUED FOR CLIENT REVIEW	MAY 16/22



NAK
design strategies
1285 WELLINGTON STREET WEST, OTTAWA, ON K1Y 3A8 CANADA
T 613.237.2345 F 613.237.6423 OTTAWA@NAK-DESIGN.COM



Project: BARRHAVEN TOWN CENTRE

Title: LANDSCAPE PLAN

Date	OCTOBER 2023	Sheet	
Scale	1:200		
Drawn	EL		
Checked/SC			
Job No.	21-195		

- PLANTING NOTES:**
- CONTRACTOR TO VERIFY LOCATION OF ALL SERVICES PRIOR TO ANY EXCAVATION.
 - LOCATIONS OF ALL PLANT MATERIALS TO BE STAKED BY THE CONTRACTOR AND VERIFIED IN THE FIELD BY LANDSCAPE ARCHITECT PRIOR TO THE EXCAVATION OF PITS.
 - ALL PLANT MATERIAL SHALL BE NURSERY GROWN STOCK UNLESS OTHERWISE NOTED.
 - DECIDUOUS TREES TO HAVE A MINIMUM 1800 CLEAR STEM ABOVE GRADE.
 - ALL PLANT MATERIAL SHALL BE WARRANTED FOR TWO YEARS FROM THE DATE OF PERFORMANCE ACCEPTANCE AS DETERMINED BY THE LANDSCAPE ARCHITECT.
 - ALL STEEL T-BARS TO BE REMOVED AT THE ONE YEAR INTERIM INSPECTION UNLESS OTHERWISE DIRECTED BY THE LANDSCAPE ARCHITECT.
 - CONTRACTOR TO MAKE GOOD ALL EXISTING AREAS DAMAGED BY HIS WORK TO THE SATISFACTION OF THE LANDSCAPE ARCHITECT.
 - PERIODIC REVIEWS OF PLANTING SHALL BE CARRIED OUT BY THE LANDSCAPE ARCHITECT.
 - ANY PROPOSED SUBSTITUTIONS OF PLANT SPECIES SHALL BE MADE WITH PLANTS OF EQUIVALENT OVERALL FORM, HEIGHT, BRANCHING HABIT, FLOWER, LEAF, COLOR, FRUIT AND CULTURE AND ONLY AFTER APPROVAL OF THE LANDSCAPE ARCHITECT.
- SHRUB NOTES:**
- PLACE THE SHRUB AS UPRIGHT AS POSSIBLE, INCLUDING ON SLOPES.
 - PLANT SHRUBS AT THE PROPER DEPTH AS INDICATED ON THE DRAWINGS.

- PACK THE SOIL WELL AROUND THE PLANT BASE TO REMOVE AIR POCKETS, BUT DO NOT COMPACT SOIL. PRESS SOIL GENTLY BUT FIRMLY TO PREVENT SHOCKING THE ROOTS.
 - PLACE SPECIES ACCORDING TO THE QUANTITIES AND SPACING AS INDICATED ON THE DRAWINGS.
 - PLANT SHRUBS AT THE PROPER DEPTH THE ROOT COLLARS SHOULD BE AT GROUND LEVEL.
 - MULCH THE SOIL SURFACE AS INDICATED ON DRAWINGS.
 - WATER PLANTS THOROUGHLY FOLLOWING PLANTING.
 - REFER TO SPECIFICATIONS FOR MAINTENANCE REQUIREMENTS.
- SOD NOTES:**
- SODDED AREAS SHALL HAVE A MINIMUM 150mm TOPSOIL.
 - FIRM THE SOIL BY GENTLY TAMPPING OR ROLLING THE TOPSOIL. DO NOT COMPACT THE SOIL. EXCESSIVE FORCE WILL DESTROY THE SOIL STRUCTURE AND INHIBIT GERMINATION.
 - CUT THE GRASS TO 50mm WHENEVER IT REACHES THE HEIGHT OF 70mm. REMOVE CLIPPINGS THAT WILL SMOTHER GRASS.
 - SODDED AREAS WILL BE ACCEPTED BY THE PROJECT MANAGER FOLLOWING PERFORMANCE ACCEPTANCE PROVIDED:
 - SEEDED AREAS ARE PROPERLY ESTABLISHED.
 - TURF IS FREE OF DEAD SPOTS AND WEEDS.
 - NO SURFACE SOIL IS VISIBLE WHEN GRASS HAS BEEN CUT TO A HEIGHT OF 50mm
 - TURF AREAS HAVE BEEN CUT NO LESS THAN TWICE. THE LAST CUT BEING CARRIED OUT WITHIN 24 HOURS PRIOR TO THE ACCEPTANCE INSPECTION.

PLANT LIST SITE PLAN

KEY	QTY.	BOTANICAL NAME	COMMON NAME	CAL/HT.	ROOT
MEDIUM DECIDUOUS TREES (10-15m)					
AG	6	ASCULUS GLABRA	OHIO BUCKEYE	70mm	B&B
AR	5	ACER RUBRUM 'REDPOINT'	REDPOINT MAPLE	70mm	B&B
CC	1	CORYLUS COLURNA	TURKISH HAZEL	70mm	B&B
CO	3	CELTIS OCCIDENTALIS	HACKBERRY	70mm	B&B
MA	6	MAACKIA AMURENSIS	AMUR MAACKIA	70mm	B&B
TM	3	TILIA MONGOLICA	MONGOLIAN LINDEN	70mm	B&B
CONIFEROUS TREES (10-15m)					
IV	1	JUNIPERUS VIRGINIANA	EASTERN RED CEDAR	200cm	W&B
PB	1	PINUS BANKSIANA	JACK PINE	200cm	W&B
PP	2	PICEA PUNGENS 'HOOPSII'	HOOPSII BLUE SPRUCE	200cm	W&B
TREE FORMES SHRUBS					
AI	120	AMELANCHIER LAEVIS	ALLEGHENY SERVICEBERRY	125cm	7 GAL.
DECIDUOUS SHRUBS					
Am	113	ARONIA MELANOCARPA	BLACK CHOKEBERRY	125cm	3 GAL.
Au	555	ARCTOSTAPHYLOS UVA-URSI 'VANCOUVER JADE'	VANCOUVER JADE BEARBERRY	25cm	3 GAL.
Cs	343	CORNUS SERICEA 'ARCTIC FIRE'	ARCTIC FIRE DOGWOOD	175cm	3 GAL.
Cof	574	COTONEASTER SALICIFOLIUS 'REPENS'	SPREADING WILLOWLEAF COTONEASTER	50cm	3 GAL.
Pf	243	PHYSCONEASTER OPULIFOLIUS 'LITTLE DEVIL'	LITTLE DEVIL NINEBARK	125cm	3 GAL.
CONIFEROUS SHRUBS					
Pm	211	PINUS MUGO VAR. PUMILIO	DWARF MUGO VAR. PUMILIO	125cm	3 GAL.

GRASSES

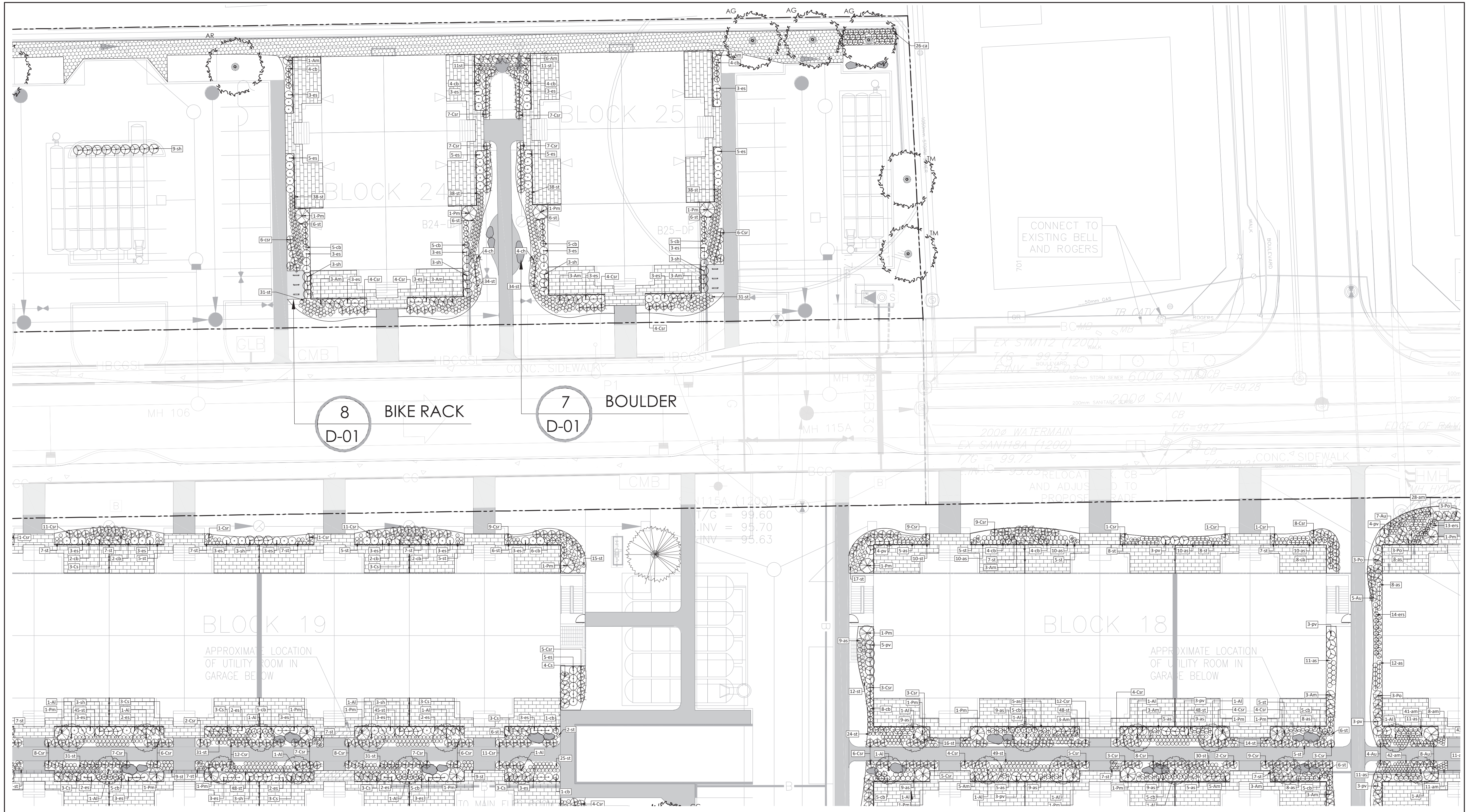
ca	251	CALAMAGROSTIS X ACUTIFLORA 'KARL FOERSTER'	KARL FOERSTER REED GRASS	150cm	1 GAL.
cb	338	CALAMAGROSTIS BRACHYTRICHA	AUTUMN FEATHER GRASS	125cm	1 GAL.
ers	529	ERAGROSTIS SPECTABILIS	PURPLE LOVE GRASS	50cm	1 GAL.
pv	238	PANICUM VIRGATUM	SWITCH GRASS	150cm	1 GAL.
sh	229	SPOROBOLUS HETEROLEPIS	PRAIRIE DROPSSEED	50cm	1 GAL.
sn	128	SORGHASTRUM NUTANS	INDIAN GRASS	150cm	1 GAL.
ss	43	SCHIZACHYRIUM SCOPARIUM 'BLUE PARADISE'	BLUE PARADISE LITTLE BLUE STEM	150cm	1 GAL.
PERENNIALS					
amt	384	ACHILLEA MILLEFOLIUM 'TERRACOTTA'	YARROW	50cm	1 GAL.
am	3167	ALLIUM X 'MILLENNIUM'	ORNAMENTAL ONION	50cm	1 GAL.
as	1381	ASTER NOVAE-ANGLIAE 'PURPLE DOME'	NEW ENGLAND ASTER	50cm	1 GAL.
es	619	ECHINACEA X SOMBRERO 'HOT CORA'	CONEFLOWER	60cm	1 GAL.
gg	3196	GALLIARDIA X GRANDIFLORA 'ARIZONA RED'	BLANNET FLOWER	30cm	1 GAL.
pn	122	PEROVSKIA ATRIPLEXIFOLIA	RUSSIAN SAGE	60cm	1 GAL.
sa	1631	SEDUM ALBUM	CARPET STONE CROP	5cm	1 GAL.
st	2413	SEDUM TELEPHIUM 'MATRONA'	STONECROP	60cm	1 GAL.

APPROVED
By Lily Xu at 11:37 am, Apr 03, 2024

Lily Xu

LILY XU, MCIP, RPP
MANAGER, DEVELOPMENT REVIEW SOUTH
PLANNING, INFRASTRUCTURE & ECONOMIC
DEVELOPMENT DEPARTMENT, CITY OF OTTAWA

Contractor shall check all dimensions on the work and report any discrepancy to the Landscape Architect before proceeding. All drawings and specifications are the property of the Landscape Architect and must be returned at the completion of the work. This drawing is not to be used for construction until signed by the Landscape Architect.



LEGEND

- PROPERTY LINE
- DECORATIVE FENCE

PLANTING

- DECIDUOUS STREET TREE (N.I.C.)
- MEDIUM DECIDUOUS TREE
- CONIFEROUS TREE
- TREE FORMED SHRUB
- DECIDUOUS SHRUB
- CONIFEROUS SHRUB
- ORNAMENTAL GRASSES
- PERENNIALS

SURFACING

- RIVER STONE
- UNIT PAVERS LIGHT DUTY PAVING
- UNIT PAVERS HEAVY DUTY PAVING
- CIP CONCRETE LIGHT DUTY PAVING
- ASPHALT LIGHT DUTY PAVING

AMENITIES

- BIKE RACK
- GRANITE SEATING BOULDERS

PLANT KEY

- PLANT SPECIES
- QUANTITY

9	REVISION FOR FIFTH SUBMISSION	MAR 15/24
8	ISSUED FOR FIFTH SUBMISSION	FEB 13/24
7	ISSUED FOR THIRD SUBMISSION	OCT 13/23
6	RE-ISSUED FOR SECOND SUBMISSION	JUN 30/23
5	RE-ISSUED FOR SECOND SUBMISSION	MAY 31/23
4	ISSUED FOR SECOND SUBMISSION	APR 24/23
3	ISSUED FOR FIRST SUBMISSION	JUN 30/22
2	ISSUED FOR CLIENT REVIEW	JUN 10/22
1	ISSUED FOR CLIENT REVIEW	MAY 16/22

Revision
City Approval Stamp

NAK
design strategies
1285 WELLINGTON STREET WEST, OTTAWA, ON K1Y 3A8 CANADA
T 613.237.2345 F 613.237.6423 OTTAWA@NAK-DESIGN.COM

Project

BARRHAVEN TOWN CENTRE

Title

LANDSCAPE PLAN

Date	OCTOBER 2023	Sheet	
Scale	1:200		
Drawn	EL		
Checked	SC		
Job No.	21-195		

- PLANTING NOTES:**
- CONTRACTOR TO VERIFY LOCATION OF ALL SERVICES PRIOR TO ANY EXCAVATION.
 - LOCATIONS OF ALL PLANT MATERIALS TO BE STAKED BY THE CONTRACTOR AND VERIFIED IN THE FIELD BY LANDSCAPE ARCHITECT PRIOR TO THE EXCAVATION OF PITS.
 - ALL PLANT MATERIAL SHALL BE NURSERY GROWN STOCK UNLESS OTHERWISE NOTED.
 - DECIDUOUS TREES TO HAVE A MINIMUM 1800 CLEAR STEM ABOVE GRADE.
 - ALL PLANT MATERIAL SHALL BE WARRANTED FOR TWO YEARS FROM THE DATE OF PERFORMANCE ACCEPTANCE AS DETERMINED BY THE LANDSCAPE ARCHITECT.
 - ALL STEEL T-BARS TO BE REMOVED AT THE ONE YEAR INTERIM INSPECTION UNLESS OTHERWISE DIRECTED BY THE LANDSCAPE ARCHITECT.
 - CONTRACTOR TO MAKE GOOD ALL EXISTING AREAS DAMAGED BY HIS WORK TO THE SATISFACTION OF THE LANDSCAPE ARCHITECT.
 - PERIODIC REVIEWS OF PLANTING SHALL BE CARRIED OUT BY THE LANDSCAPE ARCHITECT.
 - ANY PROPOSED SUBSTITUTIONS OF PLANT SPECIES SHALL BE MADE WITH PLANTS OF EQUIVALENT OVERALL FORM, HEIGHT, BRANCHING HABIT, FLOWER, LEAF, COLOR, FRUIT AND CULTURE AND ONLY AFTER APPROVAL OF THE LANDSCAPE ARCHITECT.
- SHRUB NOTES:**
- PLACE THE SHRUB AS UPRIGHT AS POSSIBLE, INCLUDING ON SLOPES.
 - PLANT SHRUBS AT THE PROPER DEPTH AS INDICATED ON THE DRAWINGS.

- PACK THE SOIL WELL AROUND THE PLANT BASE TO REMOVE AIR POCKETS, BUT DO NOT COMPACT SOIL. PRESS SOIL GENTLY BUT FIRMLY TO PREVENT SHOCKING THE ROOTS.
 - PLACE SPECIES ACCORDING TO THE QUANTITIES AND SPACING AS INDICATED ON THE DRAWINGS.
 - PLANT SHRUBS AT THE PROPER DEPTH THE ROOT COLLARS SHOULD BE AT GROUND LEVEL.
 - MULCH THE SOIL SURFACE AS INDICATED ON DRAWINGS.
 - WATER PLANTS THOROUGHLY FOLLOWING PLANTING.
 - REFER TO SPECIFICATIONS FOR MAINTENANCE REQUIREMENTS.
- SOD NOTES:**
- SODDED AREAS SHALL HAVE A MINIMUM 150mm TOPSOIL.
 - FIRM THE SOIL BY GENTLY TAMPING OR ROLLING THE TOPSOIL. DO NOT COMPACT THE SOIL. EXCESSIVE FORCE WILL DESTROY THE SOIL STRUCTURE AND INHIBIT GERMINATION.
 - CUT THE GRASS TO 50mm WHENEVER IT REACHES THE HEIGHT OF 70mm. REMOVE CLIPPINGS THAT WILL SMOTHER GRASS.
 - SODDED AREAS WILL BE ACCEPTED BY THE PROJECT MANAGER FOLLOWING PERFORMANCE ACCEPTANCE PROVIDED:
 - SEEDING AREAS ARE PROPERLY ESTABLISHED.
 - TURF IS FREE OF DEAD SPOTS AND WEEDS.
 - NO SURFACE SOIL IS VISIBLE WHEN GRASS HAS BEEN CUT TO A HEIGHT OF 50mm
 - TURF AREAS HAVE BEEN CUT NO LESS THAN TWICE. THE LAST CUT BEING CARRIED OUT WITHIN 24 HOURS PRIOR TO THE ACCEPTANCE INSPECTION.

PLANT LIST SITE PLAN

KEY	QTY.	BOTANICAL NAME	COMMON NAME	CAL/HT.	ROOT
MEDIUM DECIDUOUS TREES (10-15m)					
AG	6	AESCULUS GLABRA	OHIO BUCKEYE	70mm	B&B
AR	5	ACER RUBRUM 'REDPOINTE'	REDPOINTE MAPLE	70mm	B&B
CC	1	CORYLUS COLURNA	TURKISH HAZEL	70mm	B&B
CO	3	CELTIS OCCIDENTALIS	HACKBERRY	70mm	B&B
MA	6	MAACKIA AMURENSIS	AMUR MAACKIA	70mm	B&B
TM	3	TILIA MONGOLICA	MONGOLIAN LINDEN	70mm	B&B
CONIFEROUS TREES (10-15m)					
JV	1	JUNIPERUS VIRGINIANA	EASTERN RED CEDAR	200cm	W&B
PB	1	PINUS BANKSIANA	JACK PINE	200cm	W&B
PP	2	PICEA PUNGENS 'HOOPSII'	HOOPSII BLUE SPRUCE	200cm	W&B
TREE FORMES SHRUBS					
AI	120	AMELANCHIER LAEVIS	ALLEGHENY SERVICEBERRY	125cm	7 GAL.
DECIDUOUS SHRUBS					
Am	113	ARONIA MELANOCARPA	BLACK CHOKEBERRY	125cm	3 GAL.
Au	555	ARCTOSTAPHYLOS UVA-URSI 'VANCOUVER JADE'	VANCOUVER JADE BEARBERRY	25cm	3 GAL.
Cs	343	CORNUS SERICEA 'ARCTIC FIRE'	ARCTIC FIRE DOGWOOD	175cm	3 GAL.
Csr	574	COTONEASTER SALICIFOLIUS 'REPPENS'	SPREADING WILLOWLEAF COTONEASTER	50cm	3 GAL.
Po	243	PHYSCARPUS OPULIFOLIUS 'LITTLE DEVIL'	LITTLE DEVIL NINEBARK	125cm	3 GAL.
CONIFEROUS SHRUBS					
Pm	211	PINUS MUGO VAR. PUMILIO	DWARF MUGO VAR. PUMILIO	125cm	3 GAL.

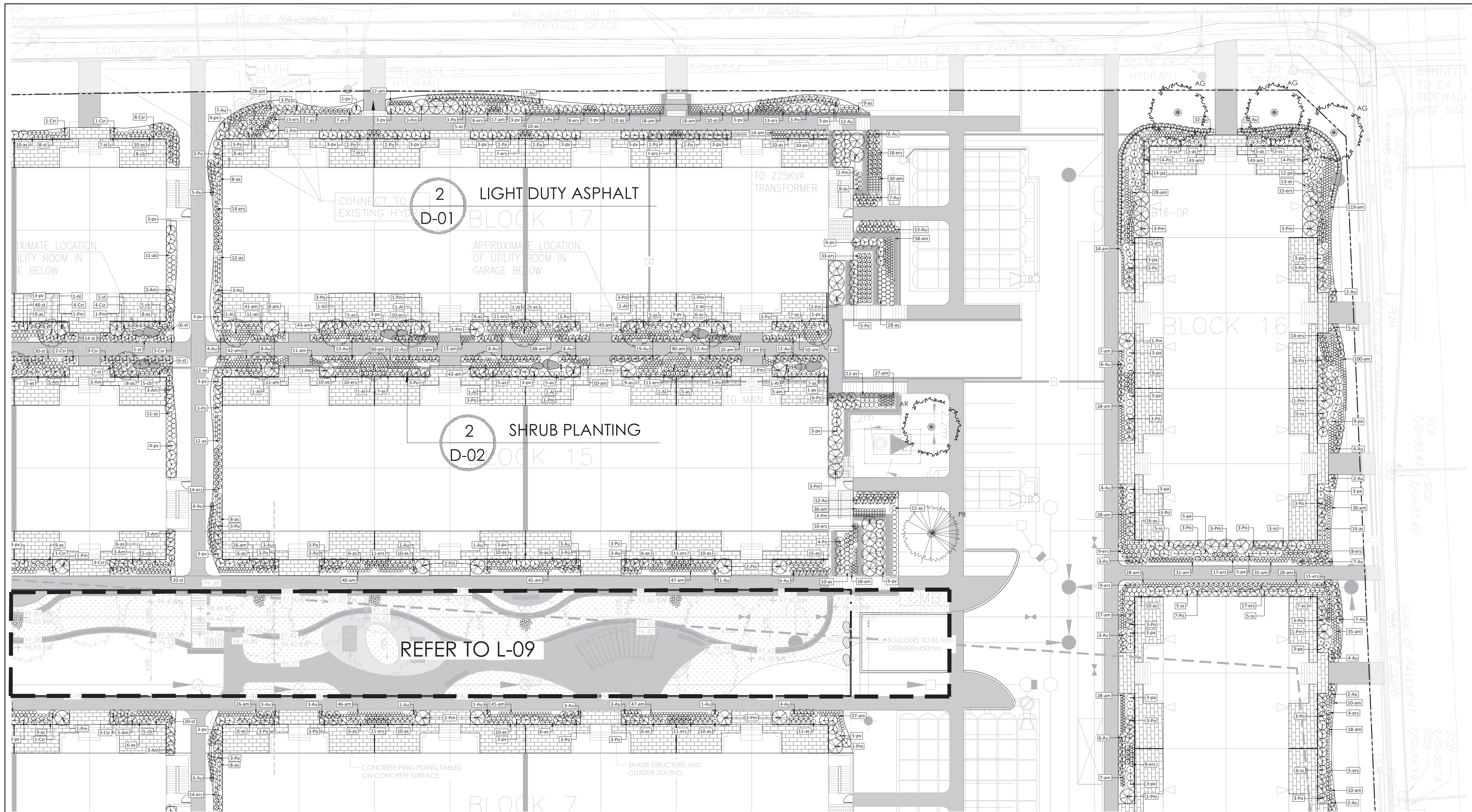
GRASSES

ca	251	CALAMAGROSTIS X ACUTIFLORA 'KARL FOERSTER'	KARL FOERSTER REED GRASS	150cm	1 GAL.
cb	338	CALAMAGROSTIS BRACHYTRICHA	AUTUMN FEATHER GRASS	125cm	1 GAL.
ers	536	ERAGROSTIS SPECTABILIS	PURPLE LOVE GRASS	50cm	1 GAL.
pv	238	PANICUM VIRGATUM	SWITCH GRASS	150cm	1 GAL.
sh	229	SPOROBOLUS HETEROLEPIS	PRAIRIE DROPSIED	50cm	1 GAL.
sn	128	SORGHASTRUM NUTANS	INDIAN GRASS	150cm	1 GAL.
ss	43	SCHIZACHYRIUM SCOPARIUM 'BLUE PARADISE'	BLUE PARADISE LITTLE BLUE STEM	150cm	1 GAL.
PERENNIALS					
amt	384	ACHILLEA MILLEFOLIUM 'TERRACOTTA'	YARROW	50cm	1 GAL.
am	3167	ALLIUM X 'MILLENIUM'	ORNAMENTAL ONION	50cm	1 GAL.
as	1381	ASTER NOVAE-ANGLIAE 'PURPLE DOME'	NEW ENGLAND ASTER	50cm	1 GAL.
es	619	ECHINACEA X SOMBRERO 'HOT CORA'	CONEFLOWER	60cm	1 GAL.
gg	3196	GALLARDIA X GRANDIFLORA 'ARIZONA RED'	BLANKET FLOWER	30cm	1 GAL.
pa	122	PEROVSKIA ATRIPLICIFOLIA	RUSSIAN SAGE	60cm	1 GAL.
sa	1631	SEDUM ALBUM	CARPET STONE CROP	5cm	1 GAL.
st	2413	SEDUM TELEPHIUM 'MATRONA'	STONECROP	60cm	1 GAL.

APPROVED
By Lily Xu at 11:38 am, Apr 03, 2024

LILY XU, MCIP, RPP
MANAGER, DEVELOPMENT REVIEW SOUTH
PLANNING, INFRASTRUCTURE & ECONOMIC
DEVELOPMENT DEPARTMENT, CITY OF OTTAWA

CITY FILE N° D07-12-22-0104 CITY PLAN N° 18822



Contractor shall check all dimensions on the work and report any discrepancy to the Landscape Architect before proceeding. All drawings and specifications are the property of the Landscape Architect and must be returned at the completion of the work. This drawing is not to be used for construction until signed by the Landscape Architect.

LEGEND

- PROPERTY LINE
- DECORATIVE FENCE

PLANTING

- DECIDUOUS STREET TREE (N.I.C.)
- MEDIUM DECIDUOUS TREE
- CONIFEROUS TREE
- TREE FORMED SHRUB
- DECIDUOUS SHRUB
- CONIFEROUS SHRUB
- ORNAMENTAL GRASSES
- PERENNIALS

SURFACING

- RIVER STONE
- UNIT PAVERS LIGHT DUTY PAVING
- UNIT PAVERS HEAVY DUTY PAVING
- CIP CONCRETE LIGHT DUTY PAVING
- ASPHALT LIGHT DUTY PAVING

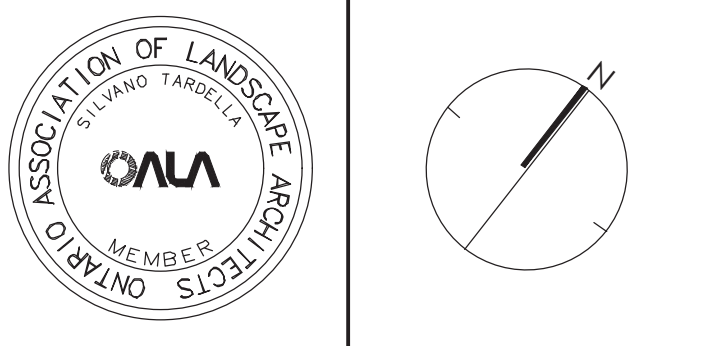
AMENITIES

- BIKE RACK
- GRANITE SEATING BOULDERS

PLANT KEY

- PLANT SPECIES
- QUANTITY

9	REVISION FOR FIFTH SUBMISSION	MAR 15/24
8	ISSUED FOR FIFTH SUBMISSION	FEB 13/24
7	ISSUED FOR THIRD SUBMISSION	OCT 13/23
6	RE-ISSUED FOR SECOND SUBMISSION	JUN 30/23
5	RE-ISSUED FOR CLIENT REVIEW	MAY 31/23
4	ISSUED FOR SECOND SUBMISSION	APR 24/23
3	ISSUED FOR FIRST SUBMISSION	JUN 30/22
2	ISSUED FOR CLIENT REVIEW	JUN 10/22
1	ISSUED FOR CLIENT REVIEW	MAY 16/22



NAK
design strategies
1285 WELLINGTON STREET WEST, OTTAWA, ON K1Y 3A8 CANADA
T 613.237.2345 F 613.237.6423 OTTAWA@NAK-DESIGN.COM



Project

BARRHAVEN TOWN CENTRE

Title
LANDSCAPE PLAN

Date	OCTOBER 2023	Sheet	
Scale	1:200		
Drawn	EL		
Checked/SC			
Job No.	21-195		

- PLANTING NOTES:**
- CONTRACTOR TO VERIFY LOCATION OF ALL SERVICES PRIOR TO ANY EXCAVATION.
 - LOCATIONS OF ALL PLANT MATERIALS TO BE STAKED BY THE CONTRACTOR AND VERIFIED IN THE FIELD BY LANDSCAPE ARCHITECT PRIOR TO THE EXCAVATION OF PITS.
 - ALL PLANT MATERIAL SHALL BE NURSERY GROWN STOCK UNLESS OTHERWISE NOTED.
 - DECIDUOUS TREES TO HAVE A MINIMUM 1800 CLEAR STEM ABOVE GRADE.
 - ALL PLANT MATERIAL SHALL BE WARRANTED FOR TWO YEARS FROM THE DATE OF PERFORMANCE ACCEPTANCE AS DETERMINED BY THE LANDSCAPE ARCHITECT.
 - ALL STEEL T-BARS TO BE REMOVED AT THE ONE YEAR INTERIM INSPECTION UNLESS OTHERWISE DIRECTED BY THE LANDSCAPE ARCHITECT.
 - CONTRACTOR TO MAKE GOOD ALL EXISTING AREAS DAMAGED BY HIS WORK TO THE SATISFACTION OF THE LANDSCAPE ARCHITECT.
 - PERIODIC REVIEWS OF PLANTING SHALL BE CARRIED OUT BY THE LANDSCAPE ARCHITECT.
 - ANY PROPOSED SUBSTITUTIONS OF PLANT SPECIES SHALL BE MADE WITH PLANTS OF EQUIVALENT OVERALL FORM, HEIGHT, BRANCHING HABIT, FLOWER, LEAF, COLOR, FRUIT AND CULTURE AND ONLY AFTER APPROVAL OF THE LANDSCAPE ARCHITECT.

- PACK THE SOIL WELL AROUND THE PLANT BASE TO REMOVE AIR POCKETS, BUT DO NOT COMPACT SOIL. PRESS SOIL GENTLY BUT FIRMLY TO PREVENT SHOCKING THE ROOTS.
 - PLACE SPECIES ACCORDING TO THE QUANTITIES AND SPACING AS INDICATED ON THE DRAWINGS.
 - PLANT SHRUBS AT THE PROPER DEPTH THE ROOT COLLARS SHOULD BE AT GROUND LEVEL.
 - MULCH THE SOIL SURFACE AS INDICATED ON DRAWINGS.
 - WATER PLANTS THOROUGHLY FOLLOWING PLANTING.
 - REFER TO SPECIFICATIONS FOR MAINTENANCE REQUIREMENTS.
- SOD NOTES:**
- SODDED AREAS SHALL HAVE A MINIMUM 150mm TOPSOIL.
 - FIRM THE SOIL BY GENTLY TAMPING OR ROLLING THE TOPSOIL. DO NOT COMPACT THE SOIL. EXCESSIVE FORCE WILL DESTROY THE SOIL STRUCTURE AND INHIBIT GERMINATION.
 - CUT THE GRASS TO 50mm WHENEVER IT REACHES THE HEIGHT OF 70mm. REMOVE CLIPPINGS THAT WILL SMOTHER GRASS.
 - SODDED AREAS WILL BE ACCEPTED BY THE PROJECT MANAGER FOLLOWING PERFORMANCE ACCEPTANCE. PROVIDED:
 - SEEDS ARE PROPERLY ESTABLISHED.
 - TURF IS FREE OF DEAD SPOTS AND WEEDS.
 - NO SURFACE SOIL IS VISIBLE WHEN GRASS HAS BEEN CUT TO A HEIGHT OF 50mm.
 - TURF AREAS HAVE BEEN CUT NO LESS THAN TWICE. THE LAST CUT BEING CARRIED OUT WITHIN 24 HOURS PRIOR TO THE ACCEPTANCE INSPECTION.

PLANT LIST SITE PLAN

KEY	QTY.	BOTANICAL NAME	COMMON NAME	CAL/HT.	ROOT
MEDIUM DECIDUOUS TREES (10-15m)					
AG	6	AESCULUS GLABRA	OHIO BUCKEY	70mm	B&B
AR	5	ACER RUBRUM 'REDPOINTE'	REDPOINTE MAPLE	70mm	B&B
CC	1	CORNUS COLUINA	TURKISH HAZEL	70mm	B&B
CO	3	CELTIS OCCIDENTALIS	HACKBERRY	70mm	B&B
MA	6	MAACKIA AMURENSIS	AMUR MAACKIA	70mm	B&B
TM	3	TILIA MONGOLICA	MONGOLIAN LINDEN	70mm	B&B
CONIFEROUS TREES (10-15m)					
JV	1	JUNIPERUS VIRGINIANA	EASTERN RED CEDAR	200cm	W&B
PB	1	PINUS BANKSIANA	JACK PINE	200cm	W&B
PP	2	PICEA PUNGENS 'HOOPSIA'	HOOPSIA BLUE SPRUCE	200cm	W&B
TREE FORMES SHRUBS					
AI	120	AMELANCHIER LAEVIS	ALLEGHENY SERVICEBERRY	125cm	7 GAL
DECIDUOUS SHRUBS					
Am	113	ARONIA MELANOCARPA	BLACK CHOKEBERRY	125cm	3 GAL
AV	555	ARCTOSTAPHYLOS UVA-URSI 'VANCOUVER JADE'	VANCOUVER JADE BEARBERRY	25cm	3 GAL
Cs	343	CORNUS SERICEA 'ARCTIC FIRE'	ARCTIC FIRE DOGWOOD	175cm	3 GAL
Cr	574	COTONEASTER SALICIFOLIUS 'REFRENS'	SPREADING WILLOWLEAF COTONEASTER	50cm	3 GAL
Po	243	PHYSCOCARPUS OPUULIFOLIUS 'LITTLE DEVIL'	LITTLE DEVIL NINEBARK	125cm	3 GAL
CONIFEROUS SHRUBS					
Pm	211	PINUS MUGO VAR. PUMILO	DWARF MUGO VAR. PUMILO	125cm	3 GAL

GRASSES

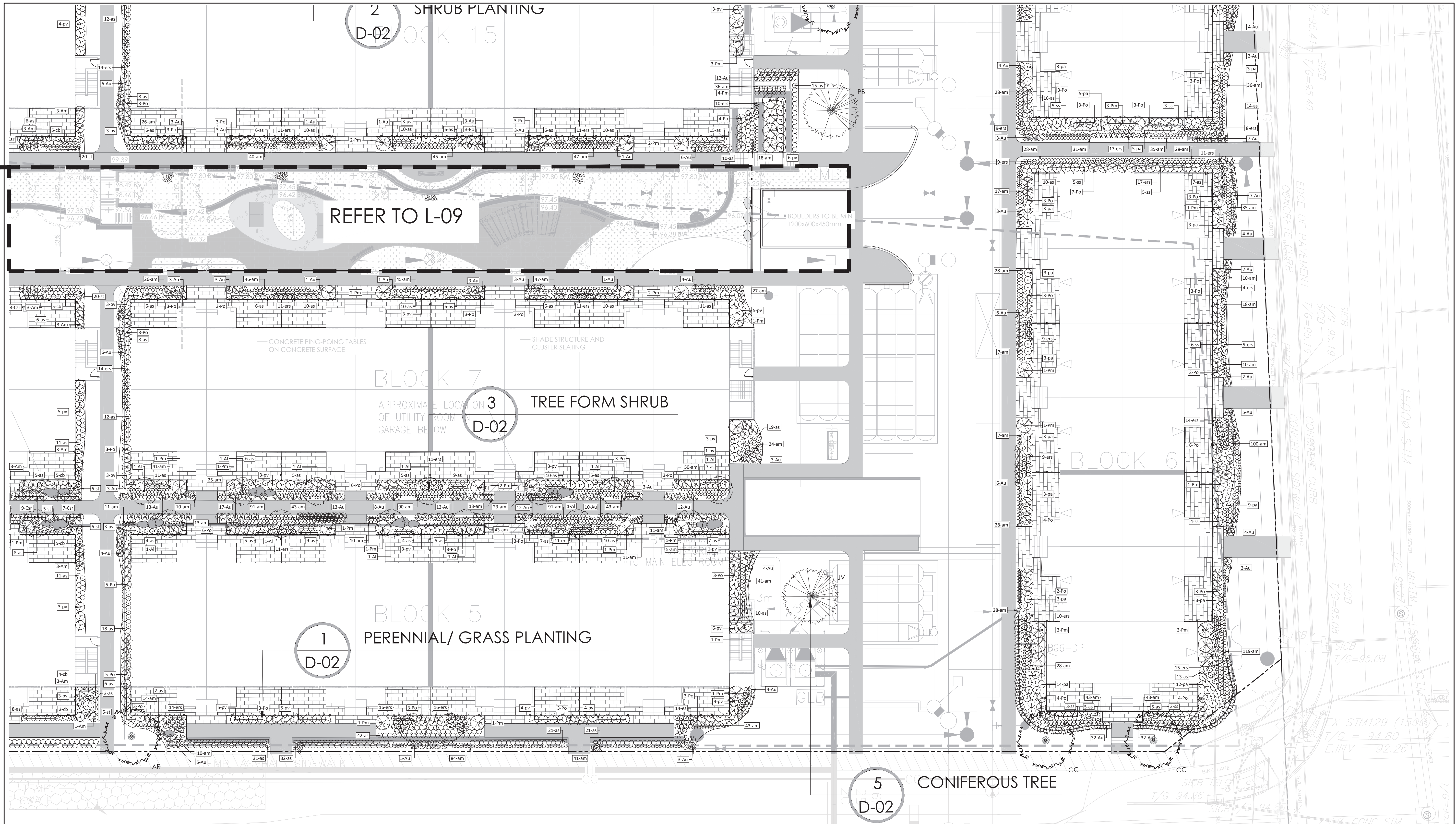
ca	251	CALAMAGROSTIS X ACUTIFLORA 'KARL FOENSTER'	KARL FOENSTER REED GRASS	150cm	1 GAL
cb	338	CALAMAGROSTIS BRACHYTRICHA	AUTUMN FEATHER GRASS	125cm	1 GAL
ers	536	ERAGROSTIS SPECTABILIS	PURPLE LOVE GRASS	50cm	1 GAL
pv	238	PANICUM VIRGATUM	SWITCH GRASS	150cm	1 GAL
sh	229	SPOROBOLUS HETEROLEPIS	PRAIRIE DROPSIDE	50cm	1 GAL
sn	128	SORGHASTRUM NUTANS	INDIAN GRASS	150cm	1 GAL
ss	43	SCHIZACHYRIUM SCOPARIUM 'BLUE PARADISE'	BLUE PARADISE LITTLE BLUE STEM	150cm	1 GAL
PERENNIALS					
am	384	ACHILLEA MILLEFOLIUM 'TERRACOTTA'	YARROW	50cm	1 GAL
al	3167	ALLIUM X 'MILLENIUM'	ORNAMENTAL ONION	50cm	1 GAL
as	1382	ASTER NOVAE-ANGLIAE 'PURPLE DOME'	NEW ENGLAND ASTER	50cm	1 GAL
es	619	ECHINACEA X SOMBRERO 'HOT CORA'	CONEFLOWER	60cm	1 GAL
gg	3196	GALLIARDIA X GRANDIFLORA 'ARIZONA RED'	BLANKET FLOWER	30cm	1 GAL
pa	122	PEROVSKIA ATRIPLICIFOLIA	RUSSIAN SAGE	60cm	1 GAL
sa	1631	SEDUM ALBUM	CARPET STONE CROP	50cm	1 GAL
st	2413	SEDUM 'TELEPHUM 'MATRONA'	STONECROP	60cm	1 GAL

APPROVED
By Lily Xu at 11:38 am, Apr 03, 2024

Lily Xu

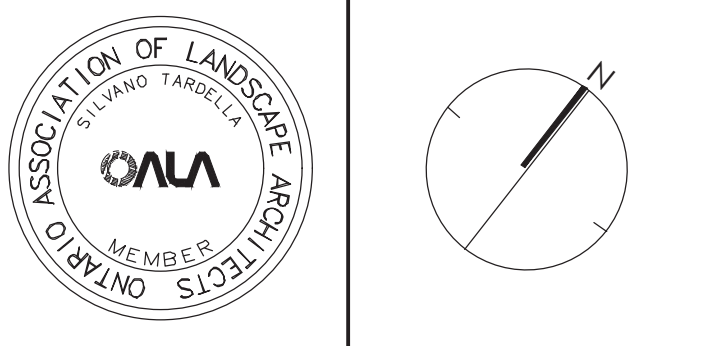
LILY XU, MCIP, RPP
MANAGER, DEVELOPMENT REVIEW SOUTH
PLANNING, INFRASTRUCTURE & ECONOMIC
DEVELOPMENT DEPARTMENT, CITY OF OTTAWA

Contractor shall check all dimensions on the work and report any discrepancy to the Landscape Architect before proceeding. All drawings and specifications are the property of the Landscape Architect and must be returned at the completion of the work. This drawing is not to be used for construction until signed by the Landscape Architect.



- LEGEND**
- PROPERTY LINE
 - DECORATIVE FENCE
- PLANTING**
- DECIDUOUS STREET TREE (N.I.C.)
 - MEDIUM DECIDUOUS TREE
 - CONIFEROUS TREE
 - TREE FORMED SHRUB
 - DECIDUOUS SHRUB
 - CONIFEROUS SHRUB
 - ORNAMENTAL GRASSES
 - PERENNIALS
- SURFACING**
- RIVER STONE
 - UNIT PAVERS LIGHT DUTY PAVING
 - UNIT PAVERS HEAVY DUTY PAVING
 - CIP CONCRETE LIGHT DUTY PAVING
 - ASPHALT LIGHT DUTY PAVING
- AMENITIES**
- BIKE RACK
 - GRANITE SEATING BOULDERS
- PLANT KEY**
- PLANT SPECIES
 - QUANTITY

9	REVISION FOR FIFTH SUBMISSION	MAR 15/24
8	ISSUED FOR FIFTH SUBMISSION	FEB 13/24
7	ISSUED FOR THIRD SUBMISSION	OCT 13/23
6	RE-ISSUED FOR SECOND SUBMISSION	JUN 30/23
5	RE-ISSUED FOR SECOND SUBMISSION	MAY 31/23
4	ISSUED FOR SECOND SUBMISSION	APR 24/23
3	ISSUED FOR FIRST SUBMISSION	JUN 30/22
2	ISSUED FOR CLIENT REVIEW	JUN 10/22
1	ISSUED FOR CLIENT REVIEW	MAY 16/22



NAK
design strategies
1285 WELLINGTON STREET WEST, OTTAWA, ON K1Y 3A8 CANADA
T 613.237.2345 F 613.237.6423 OTTAWA@NAK-DESIGN.COM



Project

BARRHAVEN TOWN CENTRE

Title
LANDSCAPE PLAN

Date OCTOBER 2023 Sheet
Scale 1:200
Drawn EL
Checked SC
Job No. 21-195

- PLANTING NOTES:**
- CONTRACTOR TO VERIFY LOCATION OF ALL SERVICES PRIOR TO ANY EXCAVATION.
 - LOCATIONS OF ALL PLANT MATERIALS TO BE STAKED BY THE CONTRACTOR AND VERIFIED IN THE FIELD BY LANDSCAPE ARCHITECT PRIOR TO THE EXCAVATION OF PITS.
 - ALL PLANT MATERIAL SHALL BE NURSERY GROWN STOCK UNLESS OTHERWISE NOTED.
 - DECIDUOUS TREES TO HAVE A MINIMUM 1800 CLEAR STEM ABOVE GRADE.
 - ALL PLANT MATERIAL SHALL BE WARRANTED FOR TWO YEARS FROM THE DATE OF PERFORMANCE ACCEPTANCE AS DETERMINED BY THE LANDSCAPE ARCHITECT.
 - ALL STEEL T-BARS TO BE REMOVED AT THE ONE YEAR INTERIM INSPECTION UNLESS OTHERWISE DIRECTED BY THE LANDSCAPE ARCHITECT.
 - CONTRACTOR TO MAKE GOOD ALL EXISTING AREAS DAMAGED BY HIS WORK TO THE SATISFACTION OF THE LANDSCAPE ARCHITECT.
 - PERIODIC REVIEWS OF PLANTING SHALL BE CARRIED OUT BY THE LANDSCAPE ARCHITECT.
 - ANY PROPOSED SUBSTITUTIONS OF PLANT SPECIES SHALL BE MADE WITH PLANTS OF EQUIVALENT OVERALL FORM, HEIGHT, BRANCHING HABIT, FLOWER, LEAF, COLOR, FRUIT AND CULTURE AND ONLY AFTER APPROVAL OF THE LANDSCAPE ARCHITECT.

- SHRUB NOTES:**
- PLACE THE SHRUB AS UPRIGHT AS POSSIBLE, INCLUDING ON SLOPES.
 - PLANT SHRUBS AT THE PROPER DEPTH AS INDICATED ON THE DRAWINGS.

- PACK THE SOIL WELL AROUND THE PLANT BASE TO REMOVE AIR POCKETS, BUT DO NOT COMPACT SOIL. PRESS SOIL GENTLY BUT FIRMLY TO PREVENT SHOCKING THE ROOTS.
 - PLACE SPECIES ACCORDING TO THE QUANTITIES AND SPACING AS INDICATED ON THE DRAWINGS.
 - PLANT SHRUBS AT THE PROPER DEPTH THE ROOT COLLARS SHOULD BE AT GROUND LEVEL.
 - MULCH THE SOIL SURFACE AS INDICATED ON DRAWINGS.
 - WATER PLANTS THOROUGHLY FOLLOWING PLANTING.
 - REFER TO SPECIFICATIONS FOR MAINTENANCE REQUIREMENTS.
- SOD NOTES:**
- SODDED AREAS SHALL HAVE A MINIMUM 150mm TOPSOIL.
 - FIRM THE SOIL BY GENTLY TAMPING OR ROLLING THE TOPSOIL. DO NOT COMPACT THE SOIL. EXCESSIVE FORCE WILL DESTROY THE SOIL STRUCTURE AND INHIBIT GERMINATION.
 - CUT THE GRASS TO 50mm WHENEVER IT REACHES THE HEIGHT OF 70mm. REMOVE CLIPPINGS THAT WILL SMOTHER GRASS.
 - SODDED AREAS WILL BE ACCEPTED BY THE PROJECT MANAGER FOLLOWING PERFORMANCE ACCEPTANCE, PROVIDED:
 - SEEDS ARE PROPERLY ESTABLISHED.
 - TURF IS FREE OF DEAD SPOTS AND WEEDS.
 - NO SURFACE SOIL IS VISIBLE WHEN GRASS HAS BEEN CUT TO A HEIGHT OF 50mm
 - TURF AREAS HAVE BEEN CUT NO LESS THAN TWICE. THE LAST CUT BEING CARRIED OUT WITHIN 24 HOURS PRIOR TO THE ACCEPTANCE INSPECTION.

PLANT LIST SITE PLAN

KEY	QTY.	BOTANICAL NAME	COMMON NAME	CAL/HT.	ROOT
MEDIUM DECIDUOUS TREES (10-15m)					
AG	6	AESCULUS GLABRA	OHIO BUCKEYE	70mm	B&B
AR	5	ACER RUBRUM 'REDPOINTE'	REDPOINTE MAPLE	70mm	B&B
CC	1	CORYLUS COLLINA	TURKISH HAZEL	70mm	B&B
CO	3	CELTIS OCCIDENTALIS	HACKBERRY	70mm	B&B
MA	6	MAACKIA AMURENSIS	AMUR MAACKIA	70mm	B&B
TM	3	TILIA MONGOLICA	MONGOLIAN LINDEN	70mm	B&B
CONIFEROUS TREES (10-15m)					
JV	1	JUNIPERUS VIRGINIANA	EASTERN RED CEDAR	200cm	W&B
PB	1	PINUS BANKSIANA	JACK PINE	200cm	W&B
PP	2	PICEA PUNGENS 'HOOPSII'	HOOPSII BLUE SPRUCE	200cm	W&B
TREE FORMES SHRUBS					
AI	120	AMELANCHIER LAEVIS	ALLEGHENY SERVICEBERRY	125cm	7 GAL.
DECIDUOUS SHRUBS					
Am	113	ARONIA MELANOCARPA	BLACK CHOKEBERRY	125cm	3 GAL.
Am	555	ARCTOSTAPHYLOS UVA-URSI 'VANCOUVER JADE'	VANCOUVER JADE BEARBERRY	25cm	3 GAL.
Cr	343	CORNUS SERICEA 'ARCTIC FIRE'	ARCTIC FIRE DOGWOOD	175cm	3 GAL.
Cs	574	COTONEASTER SALICIFOLIUS 'REPENS'	SPREADING WILLOWLEAF COTONEASTER	50cm	3 GAL.
Po	243	PHYTOSARPIS OPUULIFOLIUS 'LITTLE DEVIL'	LITTLE DEVIL NINEBARK	125cm	3 GAL.
CONIFEROUS SHRUBS					
Pm	211	PINUS MUGO VAR. PUMILIO	DWARF MUGO VAR. PUMILIO	125cm	3 GAL.

GRASSES		PERENNIALS	
ca	251	ACHILLEA MILLEFOLIUM 'TERRACOTTA'	YARROW
cb	338	ALLIUM X 'MILLENIUM'	ORNAMENTAL ONION
ers	536	ASTER NOVAE-ANGLIAE 'PURPLE DOME'	NEW ENGLAND ASTER
pv	238	ECHINACEA X SOMBRERO 'HOT CORA'	CONEFLOWER
sh	229	GALLIARDIA X GRANDIFLORA 'ARIZONA RED'	BLANKET FLOWER
sn	128	PEROVSKIA ATRIPLICIFOLIA	RUSSIAN SAGE
ss	43	SEDUM ALBUM	CARPET STONE CROP
		SEDUM TELEPHIUM 'MATRONA'	STONECROP
ca	251	CALAMAGROSTIS X ACUTIFLORA 'KARL FOERSTER'	KARL FOERSTER REED GRASS
cb	338	ALYSSUM BRACHYTRICHA	AUTUMN FEATHER GRASS
ers	536	ERAGROSTIS SPECTABILIS	PURPLE LOVE GRASS
pv	238	PANICUM VIRGATUM	SWITCH GRASS
sh	229	SPOROBOLUS HETEROLEPIS	PRAIRIE DROPSPEED
sn	128	SORGHASTRUM NUTANS	INDIAN GRASS
ss	43	SCHIZACHYRIUM SCOPARIUM 'BLUE PARADISE'	BLUE PARADISE LITTLE BLUE STEM

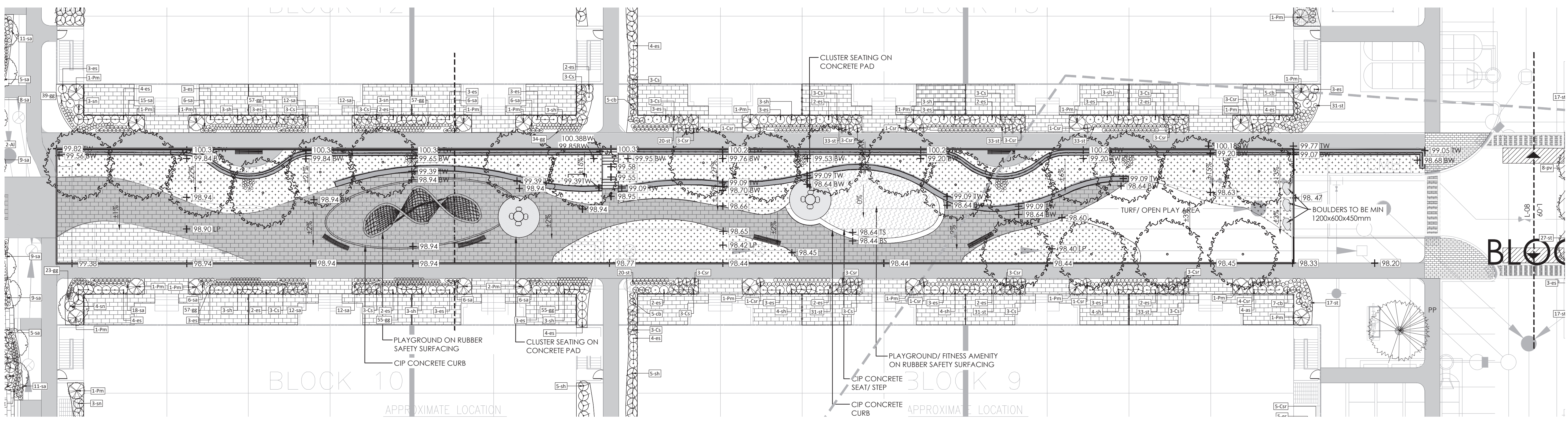
APPROVED
By Lily Xu at 11:38 am, Apr 03, 2024

Lily Xu

LILY XU, MCIP, RPP
MANAGER, DEVELOPMENT REVIEW SOUTH
PLANNING, INFRASTRUCTURE & ECONOMIC
DEVELOPMENT DEPARTMENT, CITY OF OTTAWA

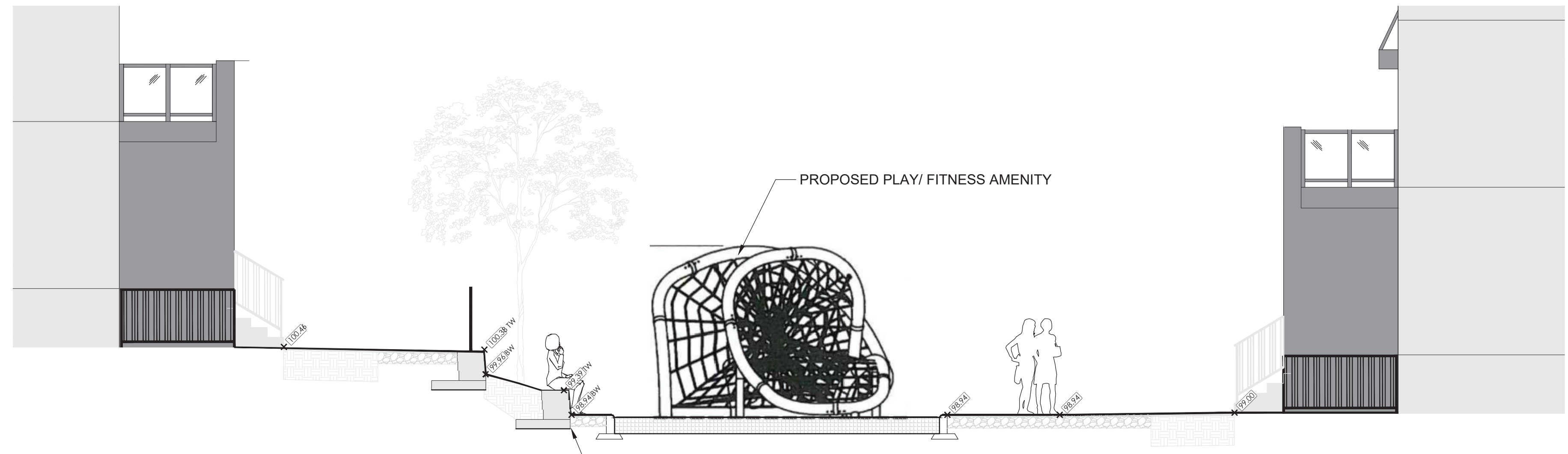
CITY FILE N° D07-12-22-0104 CITY PLAN N° 18822

Contractor shall check all dimensions on the work and report any discrepancy to the Landscape Architect before proceeding. All drawings and specifications are the property of the Landscape Architect and must be returned at the completion of the work. This drawing is not to be used for construction until signed by the Landscape Architect.



- LEGEND**
- PROPERTY LINE
 - PRIVATE TERRACE FENCE
 - GUARD RAIL ON RET. WALL
 - LANDSCAPE RETAINING WALL
- PLANTING**
- DECIDUOUS TREE
 - SHRUB/ PERENNIALS/ GRASSES
- SURFACING**
- LIGHT DUTY UNIT PAVING
 - CIP CONCRETE LIGHT DUTY PAVING
 - ASPHALT LIGHT DUTY PAVING
 - RUBBER SAFETY SURFACE
- AMENITIES**
- ACCESSIBLE BENCH/ CLUSTER SEATING
 - CONCRETE PING PONG TABLE

1 CENTRAL AMENITY SPACE
1:200



2 WEST SECTION
1:60

- PLANTING NOTES:**
- CONTRACTOR TO VERIFY LOCATION OF ALL SERVICES PRIOR TO ANY EXCAVATION.
 - LOCATIONS OF ALL PLANT MATERIALS TO BE STAKED BY THE CONTRACTOR AND VERIFIED IN THE FIELD BY LANDSCAPE ARCHITECT PRIOR TO THE EXCAVATION OF PITS.
 - ALL PLANT MATERIAL SHALL BE NURSERY GROWN STOCK UNLESS OTHERWISE NOTED.
 - DECIDUOUS TREES TO HAVE A MINIMUM 1800mm CLEAR STEM ABOVE GRADE.
 - ALL PLANT MATERIAL SHALL BE WARRANTED FOR TWO YEARS FROM THE DATE OF PERFORMANCE ACCEPTANCE AS DETERMINED BY THE LANDSCAPE ARCHITECT.
 - ALL STEEL T-BARS TO BE REMOVED AT THE ONE YEAR INTERIM INSPECTION UNLESS OTHERWISE DIRECTED BY THE LANDSCAPE ARCHITECT.
 - CONTRACTOR TO MAKE GOOD ALL EXISTING AREAS DAMAGED BY HIS WORK TO THE SATISFACTION OF THE LANDSCAPE ARCHITECT.
 - PERIODIC REVIEWS OF PLANTING SHALL BE CARRIED OUT BY THE LANDSCAPE ARCHITECT.
 - ANY PROPOSED SUBSTITUTIONS OF PLANT SPECIES SHALL BE MADE WITH PLANTS OF EQUIVALENT OVERALL FORM, HEIGHT, BRANCHING HABIT, FLOWER, LEAF, COLOR, FRUIT AND CULTURE AND ONLY AFTER APPROVAL OF THE LANDSCAPE ARCHITECT.

- SHRUB NOTES:**
- PLACE THE SHRUB AS UPRIGHT AS POSSIBLE, INCLUDING ON SLOPES.
 - PLANT SHRUBS AT THE PROPER DEPTH AS INDICATED ON THE DRAWINGS.
 - PACK THE SOIL WELL AROUND THE PLANT BASE TO REMOVE AIR POCKETS, BUT DO NOT COMPACT SOIL. PRESS SOIL GENTLY BUT FIRMLY TO PREVENT SHOCKING THE ROOTS.
 - PLACE SPECIES ACCORDING TO THE QUANTITIES AND SPACING AS INDICATED ON THE DRAWINGS.

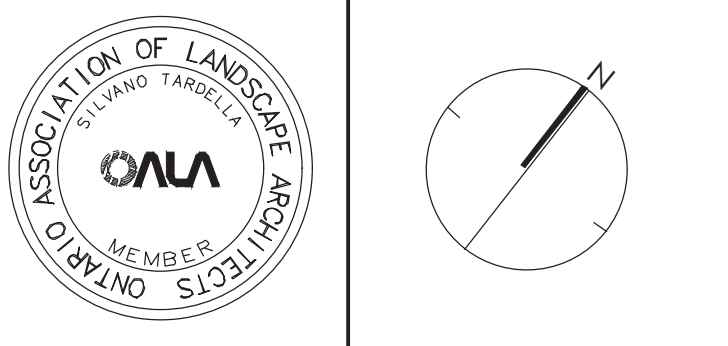
- PLANT SHRUBS AT THE PROPER DEPTH THE ROOT COLLARS SHOULD BE AT GROUND LEVEL.
 - MULCH THE SOIL SURFACE AS INDICATED ON DRAWINGS.
 - WATER PLANTS THOROUGHLY FOLLOWING PLANTING.
 - REFER TO SPECIFICATIONS FOR MAINTENANCE REQUIREMENTS.
- SOD NOTES:**
- SODDED AREAS SHALL HAVE A MINIMUM 150mm TOPSOIL.
 - FIRM THE SOIL BY GENTLY TAMPING OR ROLLING THE TOPSOIL. DO NOT COMPACT THE SOIL. EXCESSIVE FORCE WILL DESTROY THE SOIL STRUCTURE AND INHIBIT GERMINATION.
 - CUT THE GRASS TO 50mm WHENEVER IT REACHES THE HEIGHT OF 70mm. REMOVE CLIPPINGS THAT WILL SMOOTH GRASS.
 - SODDED AREAS WILL BE ACCEPTED BY THE PROJECT MANAGER FOLLOWING PERFORMANCE ACCEPTANCE PROVIDED:
 - SEEDING AREAS ARE PROPERLY ESTABLISHED.
 - TURF IS FREE OF DEAD SPOTS AND WEEDS.
 - NO SURFACE SOIL IS VISIBLE WHEN GRASS HAS BEEN CUT TO A HEIGHT OF 50mm
 - TURF AREAS HAVE BEEN CUT NO LESS THAN TWICE. THE LAST CUT BEING CARRIED OUT WITHIN 24 HOURS PRIOR TO THE ACCEPTANCE INSPECTION.

- RETAINING WALL NOTES:**
- RETAINING WALL LAYOUT AND HEIGHT ARE UNDER REVIEW. FINAL RETAINING WALL LAYOUT AND DESIGN TO BE CONFIRMED WITH STRUCTURAL ENGINEER.
 - TREE LOCATIONS ARE UNDER REVIEW. FINAL PLACEMENT OF TREES TO BE CONFIRMED BASED ON REQUIRED DEPTH OF GEGRID REINFORCEMENT BEHIND RETAINING WALLS.

PLANT LIST AMENITY SPACE

KEY	QTY.	BOTANICAL NAME	COMMON NAME	CAL/HT.	ROOT
MEDIUM DECIDUOUS TREES (10-15m)					
AR	X	ACER RUBRUM 'REDPOINTE'	REDPOINTE MAPLE	70mm	8&B
CC	X	CORYLUS COLURNA	TURKISH HAZEL	70mm	8&B
CO	X	CELTIS OCCIDENTALIS	HACKBERRY	70mm	8&B
MA	X	MAACKIA AMURENSIS	AMUR MAACKIA	70mm	8&B
TREE FORMES SHRUBS					
Al	X	AMELANCHIER LAEVIS	ALLEGHENY SERVICEBERRY	125cm	7 GAL.
DECIDUOUS SHRUBS					
Am	X	ARONIA MELANOCARPA	BLACK CHOKEBERRY	125cm	3 GAL.
Cs	X	CORNUS SERICEA 'ARCTIC FIRE'	ARCTIC FIRE DOGWOOD	175cm	3 GAL.
CONIFEROUS SHRUBS					
Pm	X	PINUS MUGO VAR. PUMILIO	DWARF MUGO VAR. PUMILIO	125cm	3 GAL.
GRASSES					
cb	X	CALAMAGROSTIS BRACHYTRICHA	AUTUMN FEATHER GRASS	125cm	1 GAL.
ers	X	ERAGROSTIS SPECTABILIS	PURPLE LOVE GRASS	50cm	1 GAL.
pv	X	PANICUM VIRGATUM	SWITCH GRASS	150cm	1 GAL.
PERENNIALS					
as	X	ASTER NOVAE-ANGLIAE 'PURPLE DOME'	NEW ENGLAND ASTER	50cm	1 GAL.
es	X	ECHINACEA X SOMBRERO 'HOT CORA'	CONEFLOWER	60cm	1 GAL.
gs	X	GAILLARDIA X GRANDIFLORA 'ARIZONA RED'	BLANKET FLOWER	30cm	1 GAL.
pa	X	PEROVSKIA ATRIPLICIFOLIA	RUSSIAN SAGE	60cm	1 GAL.
st	X	SEDUM 'TELEPHIUM' 'MATRONA'	STONECROP	60cm	1 GAL.

Revision	Date	
9	REVISION FOR FIFTH SUBMISSION	MAR 15/24
8	ISSUED FOR FIFTH SUBMISSION	FEB 13/24
7	ISSUED FOR THIRD SUBMISSION	OCT 13/23
6	RE-ISSUED FOR SECOND SUBMISSION	JUN 30/23
5	RE-ISSUED FOR SECOND SUBMISSION	MAY 31/23
4	ISSUED FOR SECOND SUBMISSION	APR 24/23
3	ISSUED FOR FIRST SUBMISSION	JUN 30/22
2	ISSUED FOR CLIENT REVIEW	JUN 10/22
1	ISSUED FOR CLIENT REVIEW	MAY 16/22



NAK
design strategies
1285 WELLINGTON STREET WEST, OTTAWA, ON K1Y 3A8 CANADA
T 613.237.2345 F 613.237.6423 OTTAWA@NAK-DESIGN.COM



BARRHAVEN TOWN CENTRE

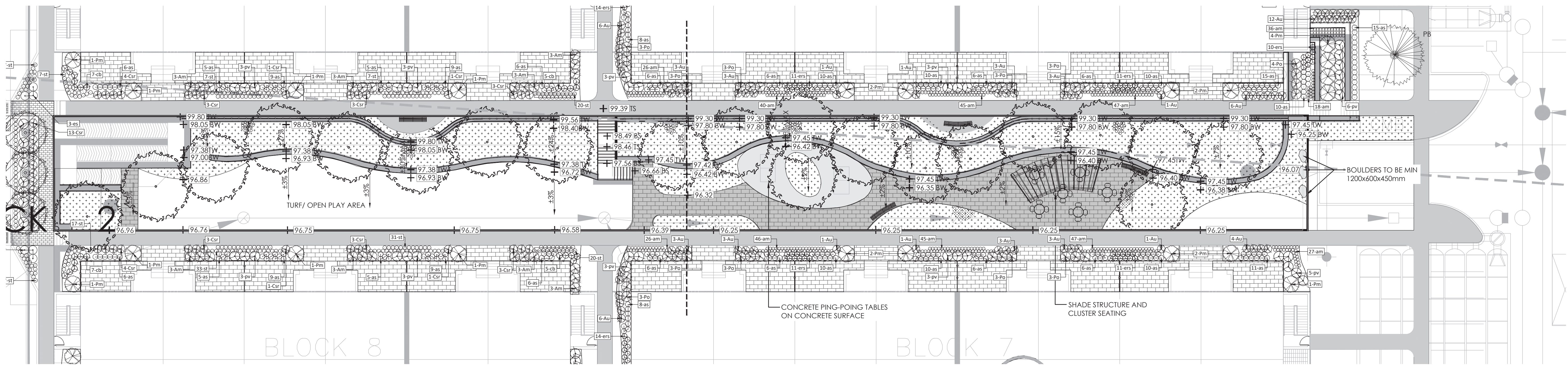
Title: AMENITY SPACE

Date: OCTOBER 2023
Scale: 1:200
Drawn: EL
Checked: SC
Job No.: 21-195

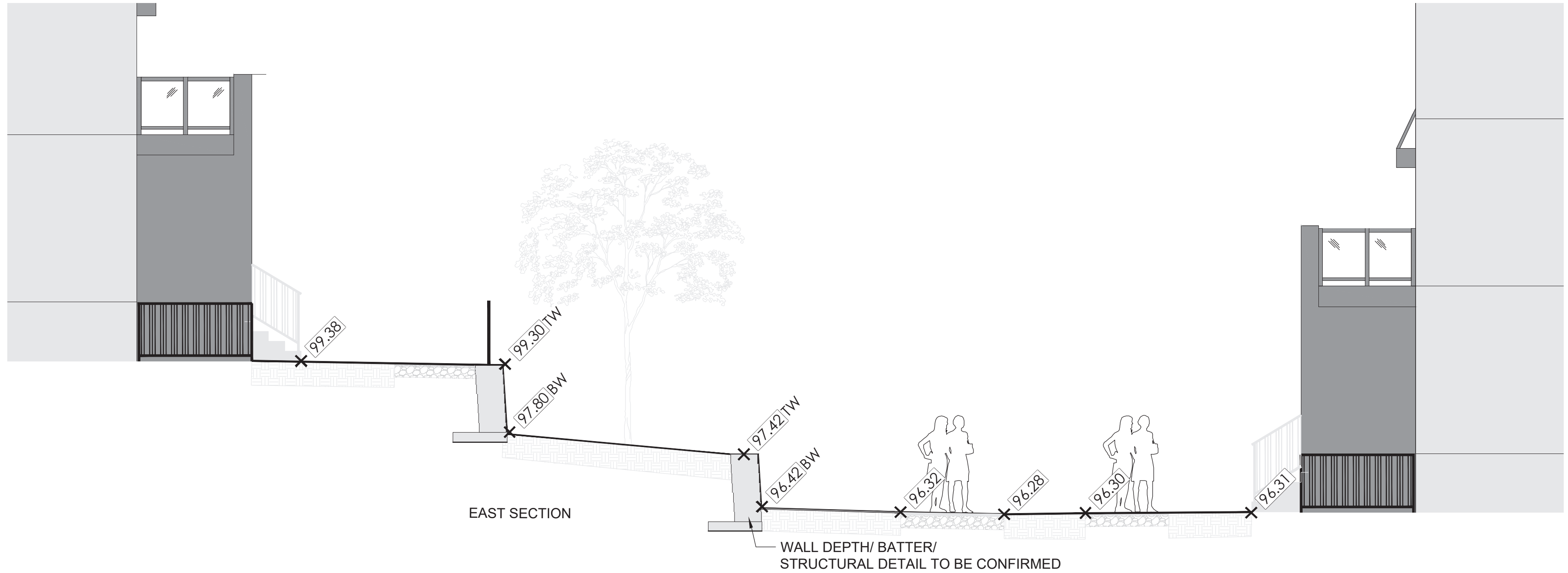
APPROVED
By Lily Xu at 11:38 am, Apr 03, 2024

Lily Xu
LILY XU, MCIP, RPP
MANAGER, DEVELOPMENT REVIEW SOUTH
PLANNING, INFRASTRUCTURE & ECONOMIC
DEVELOPMENT DEPARTMENT, CITY OF OTTAWA

Contractor shall check all dimensions on the work and report any discrepancy to the Landscape Architect before proceeding. All drawings and specifications are the property of the Landscape Architect and must be returned at the completion of the work. This drawing is not to be used for construction until signed by the Landscape Architect.



1 CENTRAL AMENITY SPACE
1:200



2 EAST SECTION
1:60

- PLANTING NOTES:**
- CONTRACTOR TO VERIFY LOCATION OF ALL SERVICES PRIOR TO ANY EXCAVATION.
 - LOCATIONS OF ALL PLANT MATERIALS TO BE STAKED BY THE CONTRACTOR AND VERIFIED IN THE FIELD BY LANDSCAPE ARCHITECT PRIOR TO THE EXCAVATION OF PITS.
 - ALL PLANT MATERIAL SHALL BE NURSERY GROWN STOCK UNLESS OTHERWISE NOTED.
 - DECIDUOUS TREES TO HAVE A MINIMUM 1800 CLEAR STEM ABOVE GRADE.
 - ALL PLANT MATERIAL SHALL BE WARRANTED FOR TWO YEARS FROM THE DATE OF PERFORMANCE ACCEPTANCE AS DETERMINED BY THE LANDSCAPE ARCHITECT.
 - ALL STEEL T-BARS TO BE REMOVED AT THE ONE YEAR INTERIM INSPECTION UNLESS OTHERWISE DIRECTED BY THE LANDSCAPE ARCHITECT.
 - CONTRACTOR TO MAKE GOOD ALL EXISTING AREAS DAMAGED BY HIS WORK TO THE SATISFACTION OF THE LANDSCAPE ARCHITECT.
 - PERIODIC REVIEWS OF PLANTING SHALL BE CARRIED OUT BY THE LANDSCAPE ARCHITECT.
 - ANY PROPOSED SUBSTITUTIONS OF PLANT SPECIES SHALL BE MADE WITH PLANTS OF EQUIVALENT OVERALL FORM, HEIGHT, BRANCHING HABIT, FLOWER, LEAF, COLOR, FRUIT AND CULTURE AND ONLY AFTER APPROVAL OF THE LANDSCAPE ARCHITECT.
- SHRUB NOTES:**
- PLACE THE SHRUB AS UPRIGHT AS POSSIBLE, INCLUDING ON SLOPES.
 - PLANT SHRUBS AT THE PROPER DEPTH AS INDICATED ON THE DRAWINGS.
 - PACK THE SOIL WELL AROUND THE PLANT BASE TO REMOVE AIR POCKETS, BUT DO NOT COMPACT SOIL. PRESS SOIL GENTLY BUT FIRMLY TO PREVENT SHOCKING THE ROOTS.
 - PLACE SPECIES ACCORDING TO THE QUANTITIES AND SPACING AS INDICATED ON THE DRAWINGS.
 - PLANT SHRUBS AT THE PROPER DEPTH THE ROOT COLLARS SHOULD BE AT GROUND LEVEL.

- PLANT SHRUBS AT THE PROPER DEPTH THE ROOT COLLARS SHOULD BE AT GROUND LEVEL.
 - MULCH THE SOIL SURFACE AS INDICATED ON DRAWINGS.
 - WATER PLANTS THOROUGHLY FOLLOWING PLANTING.
 - REFER TO SPECIFICATIONS FOR MAINTENANCE REQUIREMENTS.
- SOD NOTES:**
- SODDED AREAS SHALL HAVE A MINIMUM 150mm TOPSOIL.
 - FIRM THE SOIL BY GENTLY TAMPING OR ROLLING THE TOPSOIL. DO NOT COMPACT THE SOIL. EXCESSIVE FORCE WILL DESTROY THE SOIL STRUCTURE AND INHIBIT GERMINATION.
 - CUT THE GRASS TO 30mm WHENEVER IT REACHES THE HEIGHT OF 70mm. REMOVE CLIPPINGS THAT WILL SMOOTH GRASS.
 - SODDED AREAS WILL BE ACCEPTED BY THE PROJECT MANAGER FOLLOWING PERFORMANCE ACCEPTANCE, PROVIDED:
 - SEEDED AREAS ARE PROPERLY ESTABLISHED.
 - TURF IS FREE OF DEAD SPOTS AND WEEDS.
 - NO SURFACE SOIL IS VISIBLE WHEN GRASS HAS BEEN CUT TO A HEIGHT OF 50mm
 - TURF AREAS HAVE BEEN CUT NO LESS THAN TWICE. THE LAST CUT BEING CARRIED OUT WITHIN 24 HOURS PRIOR TO THE ACCEPTANCE INSPECTION.
- RETAINING WALL NOTES:**
- RETAINING WALL LAYOUT AND HEIGHT ARE UNDER REVIEW. FINAL RETAINING WALL LAYOUT AND DESIGN TO BE CONFIRMED WITH STRUCTURAL ENGINEER
 - TREE LOCATIONS ARE UNDER REVIEW. FINAL PLACEMENT OF TREES TO BE CONFIRMED BASED ON REQUIRED DEPTH OF GEOGRID REINFORCEMENT BEHIND RETAINING WALLS.

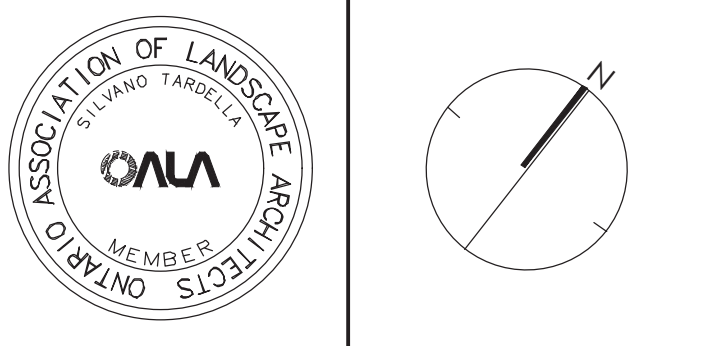
PLANT LIST AMENITY SPACE

KEY	QTY.	BOTANICAL NAME	COMMON NAME	CAL/HT.	ROOT
MEDIUM DECIDUOUS TREES (10-15m)					
AR	X	ACER RUBRUM 'REDPOINTE'	REDPOINTE MAPLE	70mm	B&B
CC	X	CORYLUS COLURNA	TURKISH HAZEL	70mm	B&B
CO	X	CELTIS OCCIDENTALIS	HACKBERRY	70mm	B&B
MA	X	MAACKIA AMURENSIS	AMUR MAACKIA	70mm	B&B
TREE FORMES SHRUBS					
AI	X	AMELANCHIER LAEVIS	ALLEGHENY SERVICEBERRY	125cm	7 GAL.
DECIDUOUS SHRUBS					
Am	X	ARONIA MELANOCARPA	BLACK CHOKEBERRY	125cm	3 GAL.
Cs	X	CORNUS SERICEA 'ARCTIC FIRE'	ARCTIC FIRE DOGWOOD	175cm	3 GAL.
CONIFEROUS SHRUBS					
Pm	X	PINUS MUGO VAR. PUMILIO	DWARF MUGO VAR. PUMILIO	125cm	3 GAL.
GRASSES					
cb	X	CALAMAGROSTIS BRACHYTRICHA	AUTUMN FEATHER GRASS	125cm	1 GAL.
ers	X	ERAGROSTIS SPECTABILIS	PURPLE LOVE GRASS	50cm	1 GAL.
pv	X	PANICUM VIRGATUM	SWITCH GRASS	150cm	1 GAL.
PERENNIALS					
as	X	ASTER NOVAE-ANGLIAE 'PURPLE DOME'	NEW ENGLAND ASTER	50cm	1 GAL.
es	X	ECHINACEA X SOMBRERO 'HOT CORA'	CONFLOWER	60cm	1 GAL.
gg	X	GAILLARDIA X GRANDIFLORA 'ARIZONA RED'	BLANKET FLOWER	30cm	1 GAL.
ps	X	PEROVSKIA ATRIPLEXIFOLIA	RUSSIAN SAGE	60cm	1 GAL.
st	X	SEDUM TELEPHIUM 'MATRONA'	STONECROP	60cm	1 GAL.

- LEGEND**
- PROPERTY LINE
 - PRIVATE TERRACE FENCE
 - GUARD RAIL ON RET. WALL
 - LANDSCAPE RETAINING WALL
- PLANTING**
- DECIDUOUS TREE
 - SHRUB/ PERENNIALS/ GRASSES
- SURFACING**
- LIGHT DUTY UNIT PAVERS
 - CIP CONCRETE LIGHT DUTY PAVING
 - ASPHALT LIGHT DUTY PAVING
 - RUBBER SAFETY SURFACE
- AMENITIES**
- ACCESSIBLE BENCH/ CLUSTER SEATING
 - CONCRETE PING PONG TABLE

Revision	Date	
9	REVISION FOR FIFTH SUBMISSION	MAR 15/24
8	ISSUED FOR FIFTH SUBMISSION	FEB 13/24
7	ISSUED FOR THIRD SUBMISSION	OCT 13/23
6	RE-ISSUED FOR SECOND SUBMISSION	JUN 30/23
5	RE-ISSUED FOR SECOND SUBMISSION	MAY 31/23
4	ISSUED FOR SECOND SUBMISSION	APR 24/23
3	ISSUED FOR FIRST SUBMISSION	JUN 30/22
2	ISSUED FOR CLIENT REVIEW	JUN 10/22
1	ISSUED FOR CLIENT REVIEW	MAY 16/22

City Approval Stamp



NAK
design strategies
1285 WELLINGTON STREET WEST, OTTAWA, ON K1Y 3A8 CANADA
T 613.237.2345 F 613.237.6423 OTTAWA@NAK-DESIGN.COM



Project

BARRHAVEN TOWN CENTRE

Title
AMENITY SPACE

Date OCTOBER 2023
Scale 1:200
Drawn EL
Checked SC
Job No. 21-195

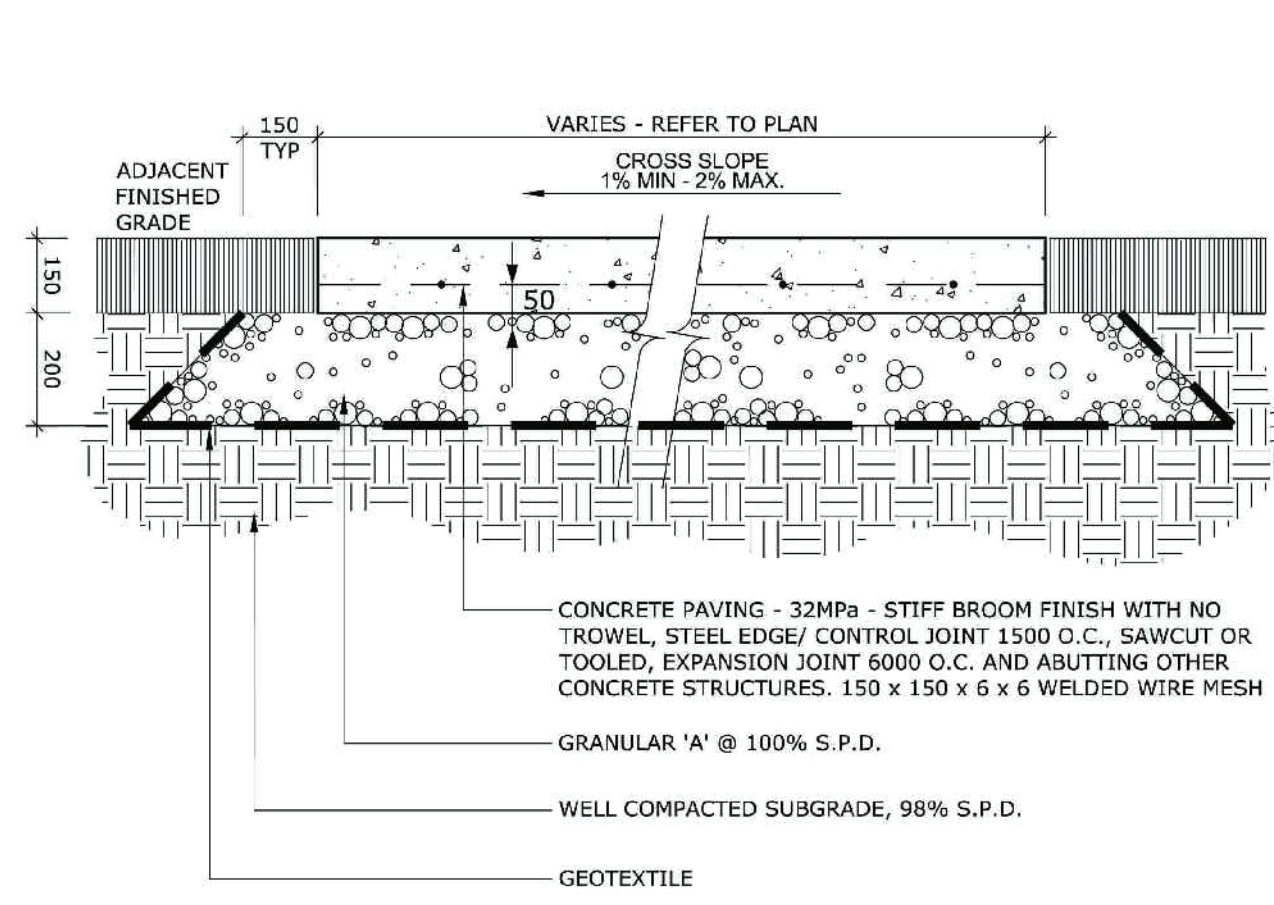
Sheet
L-09

APPROVED
By Lily Xu at 11:39 am, Apr 03, 2024

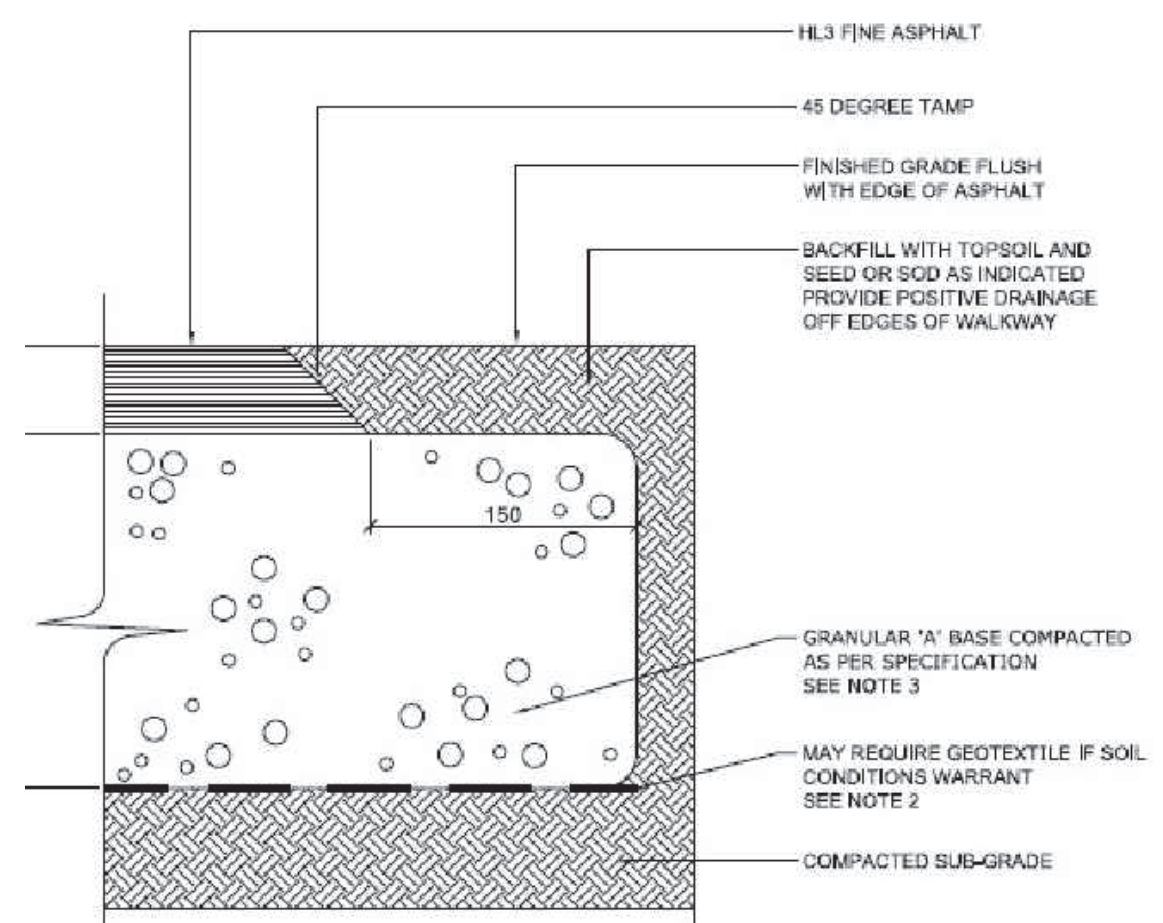
Lily Xu

LILY XU, MCIP, RPP
MANAGER, DEVELOPMENT REVIEW SOUTH
PLANNING, INFRASTRUCTURE & ECONOMIC
DEVELOPMENT DEPARTMENT, CITY OF OTTAWA

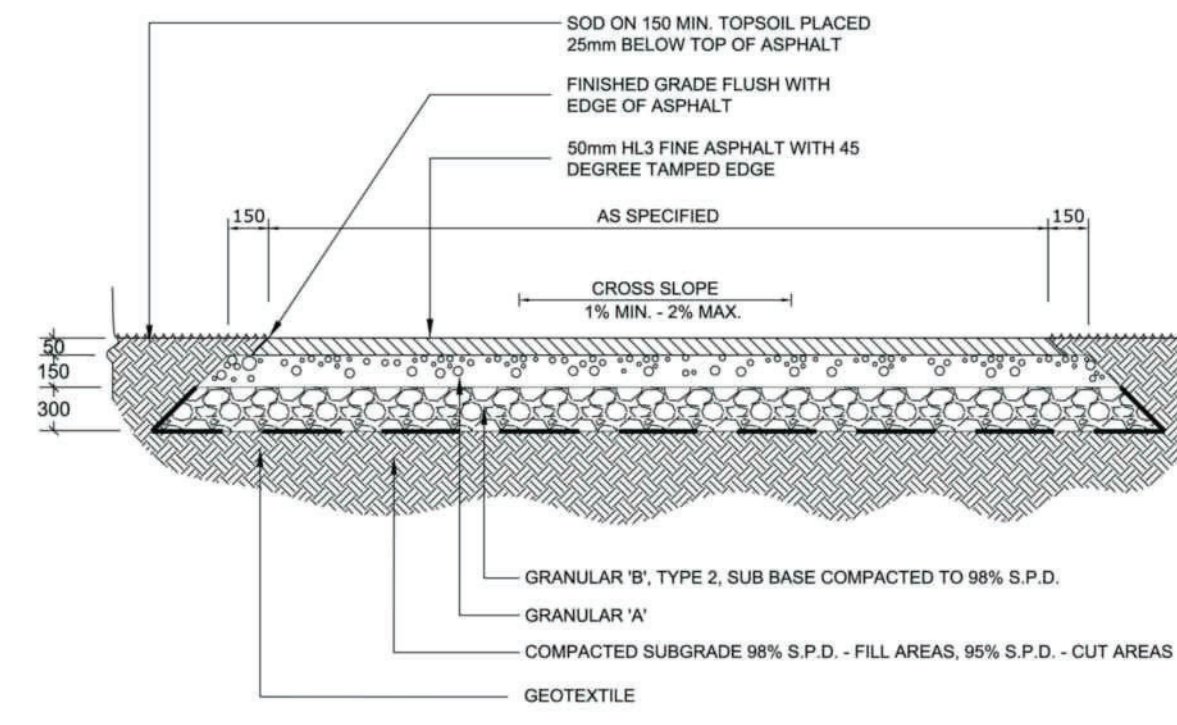
Contractor shall check all dimensions on the work and report any discrepancy to the Landscape Architect before proceeding. All drawings and specifications are the property of the Landscape Architect and must be returned at the completion of the work. This drawing is not to be used for construction until signed by the Landscape Architect.



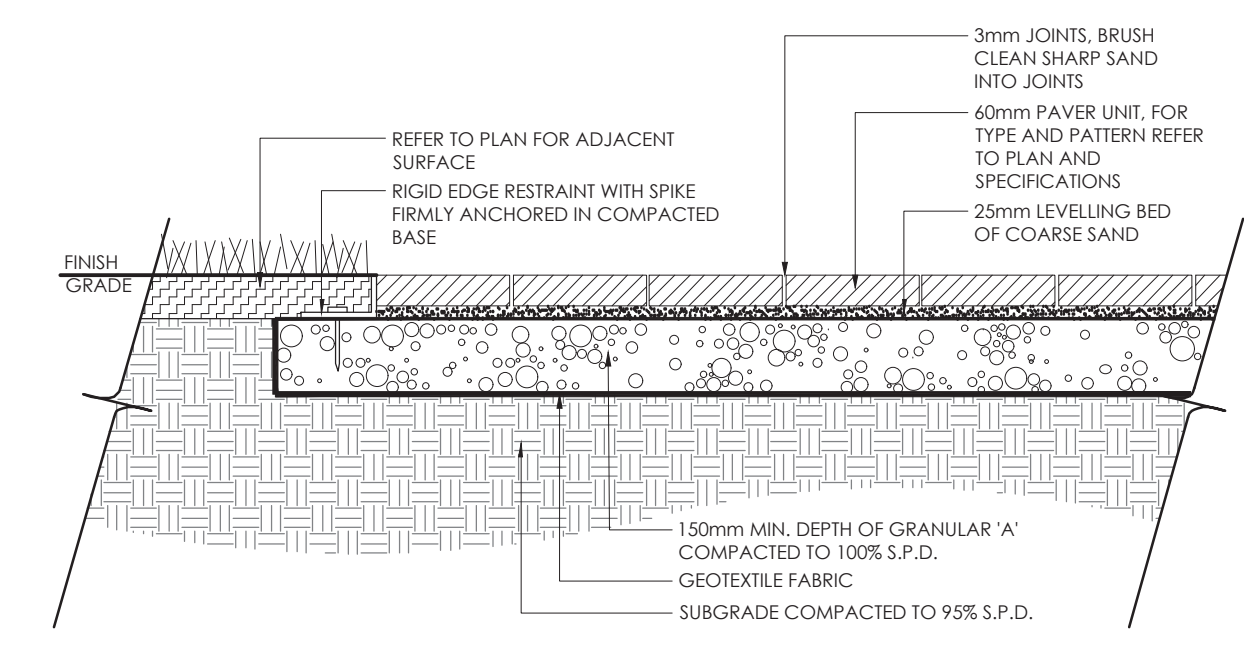
- NOTES:**
- ALL MEASUREMENTS ARE IN MILLIMETRES UNLESS OTHERWISE NOTED
 - CONCRETE SHALL BE 32MPa CLASS C-2 MEETING THE REQUIREMENTS OF S.P. F-3510 AND PLACED IN ACCORDANCE WITH S.P. F-9040
 - GRANULAR 'A' SHALL MEET THE REQUIREMENTS OF OPSS 1010
 - APPROVED NON-WOVEN CLASS 1 GEOTEXTILE AS PER MS-22.15 WHEN WARRANTED BY SOIL CONDITION, SUBJECT TO APPROVAL BY THE CONTRACT ADMINISTRATOR



- NOTE:**
- ALL MEASUREMENTS ARE IN MILLIMETRES UNLESS OTHERWISE NOTED
 - CROSS SLOPE SIDEWALK 1 TO 2% IN DIRECTION OF NATURAL DRAINAGE TO PROVIDE POSITIVE DRAINAGE OFF ALL WALKS
 - APPROVED NON-WOVEN CLASS 1 GEOTEXTILE AS PER MS-22.15 WHEN WARRANTED BY SOIL CONDITION, SUBJECT TO APPROVAL BY THE CONTRACT ADMINISTRATOR
 - GRANULAR 'A' SHALL MEET THE REQUIREMENTS OF OPSS 1010

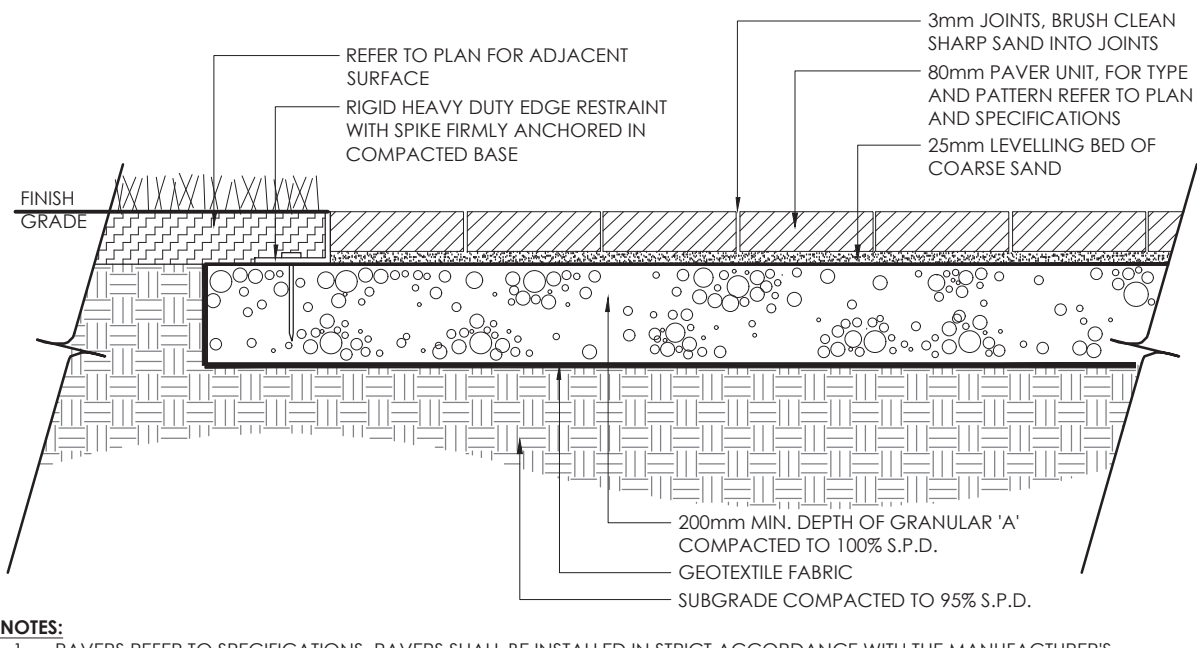


- NOTES:**
- ALL MEASUREMENTS ARE IN MILLIMETRES UNLESS OTHERWISE NOTED
- EXCAVATION:** EXCAVATE TO 500mm MIN. DEPTH OR DEEPER, AS REQUIRED. CONTRACTOR SHALL BE RESPONSIBLE FOR THE REMOVAL AND REPLACEMENT OF ANY UNSUITABLE SUBGRADE MATERIAL SUCH AS TOPSOIL, ALL SOFT SPOTS AND/OR ORGANIC MATTER AND REPLACEMENT WITH CLEAN SUBSOIL. FILL SUBGRADE SHALL BE CONSOLIDATED TO A 98% S.P.D. REMOVE EXCAVATED MATERIAL OFF SITE UNLESS OTHERWISE DIRECTED
- GRANULAR BASE:** GRANULAR 'A' - 100% STANDARD PROCTOR DENSITY MIN., GRANULAR 'B', TYPE 2, SUB BASE GRANULARS TO OPSS ASPHALT: 50 TOP SURFACE LAYER (AFTER COMPACTION) OF HOT MIX HLB3 FINE IN ACCORDANCE WITH O.P.S.S. STANDARDS
- EDGE TREATMENT:** ASPHALT EDGE TO BE 45 DEGREES WELL TAMPED TO FORM UNIFORMLY SMOOTH, CLEAN EDGES WITHOUT LATERAL DEVIATIONS. SOD TO FEATHER IN WITH EXISTING SOD AND GRADES AT A MAXIMUM SLOPE OF 4:1. ALL SODDED AREAS SHALL BE 25mm BELOW THE ASPHALT SURFACE. REPLACE ALL TOPSOIL AND SOD AS DIRECTED IN CUT AND FILL SITUATIONS
- DRAINAGE:** SLOPE TO BE A MINIMUM OF 2% ON CROWNED OR CROSS SLOPED PATHS AS DIRECTED ON SITE OR AS SHOWN IN DRAWINGS
- SODDING:** ALL DISTURBED AREAS ALONG ASPHALT WALKWAYS SHALL BE SODDED OVER 150mm TOPSOIL FOR A MINIMUM DISTANCE OF 600mm
- GEOTEXTILE:** GEOTEXTILE SHALL BE APPROVED NON-WOVEN CLASS 1 GEOTEXTILE AS PER MS-22.15 WHEN WARRANTED BY SOIL CONDITIONS. SUBJECT TO APPROVAL BY THE CONTRACT ADMINISTRATOR
- *NOTE: TO BE CONFIRMED WITH SOIL INVESTIGATIONS AND MODIFIED ACCORDINGLY**



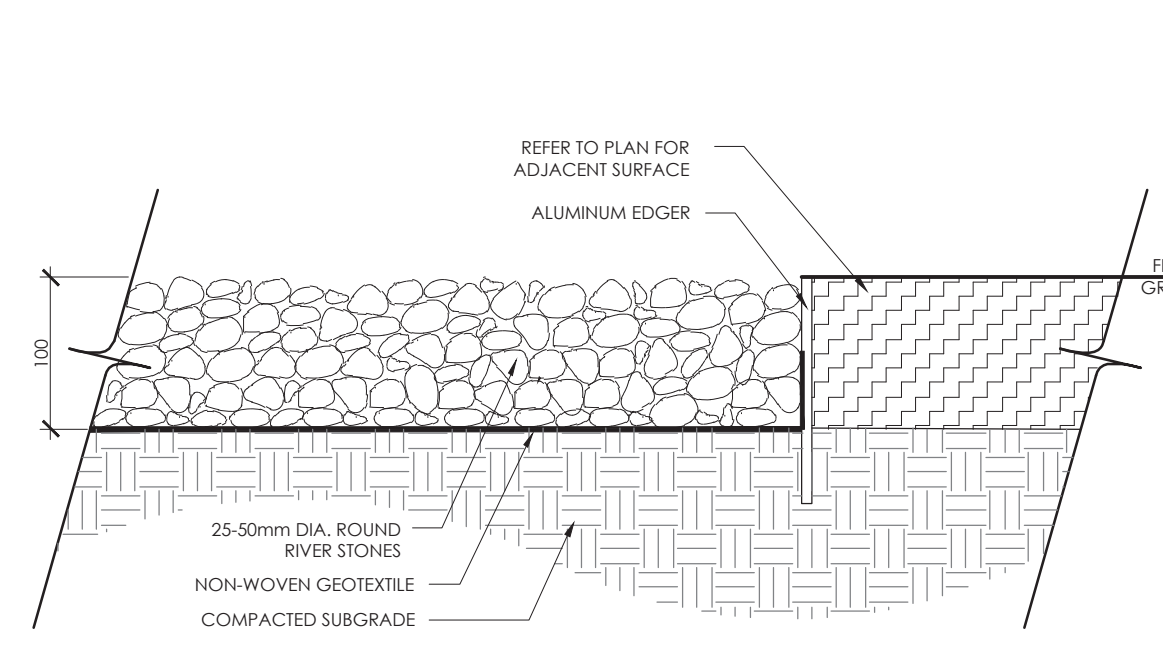
- NOTES:**
- FOR PAVES TYPE REFER TO SPECIFICATIONS. PAVES SHALL BE INSTALLED IN STRICT ACCORDANCE WITH THE MANUFACTURER'S RECOMMENDATIONS WITH TIGHT BUTT JOINTS OF APPROXIMATELY 3mm, ON A SAND BASE. SAW CUT PAVES AS REQUIRED. USE AN APPROVED VIBRATORY COMPACTOR IN A CIRCULAR PATTERN.
 - ALL DAMAGED OR CHIPPED PAVES MUST BE REPLACED AT THE CONTRACTOR'S COST.
 - EXCAVATE AND REMOVE ALL TOPSOIL AND UNSTABLE MATERIALS OFF SITE. SUBGRADE TO BE GRADED TO SIMILAR CONTOURS AS FINISH GRADE. COMPACT SUBGRADE TO 95% S.P.D. PLACE 150mm LAYER OF GRANULAR 'A' COMPACTED TO 100% S.P.D.
 - PLACE MAXIMUM 25mm UNCOMPACTED SAND FOR LEVELLING COURSE.
 - INSTALL PAVING UNITS IN THE PATTERN AS SPECIFIED PER MANUFACTURER'S PATTERN RECOMMENDATION AND SPECIFICATIONS.
 - RETAIN EDGING WITH RIGID PAVES EDGE RESTRAINTS AS PER SPECIFICATIONS.

1 LIGHT DUTY CONCRETE
N.T.S.



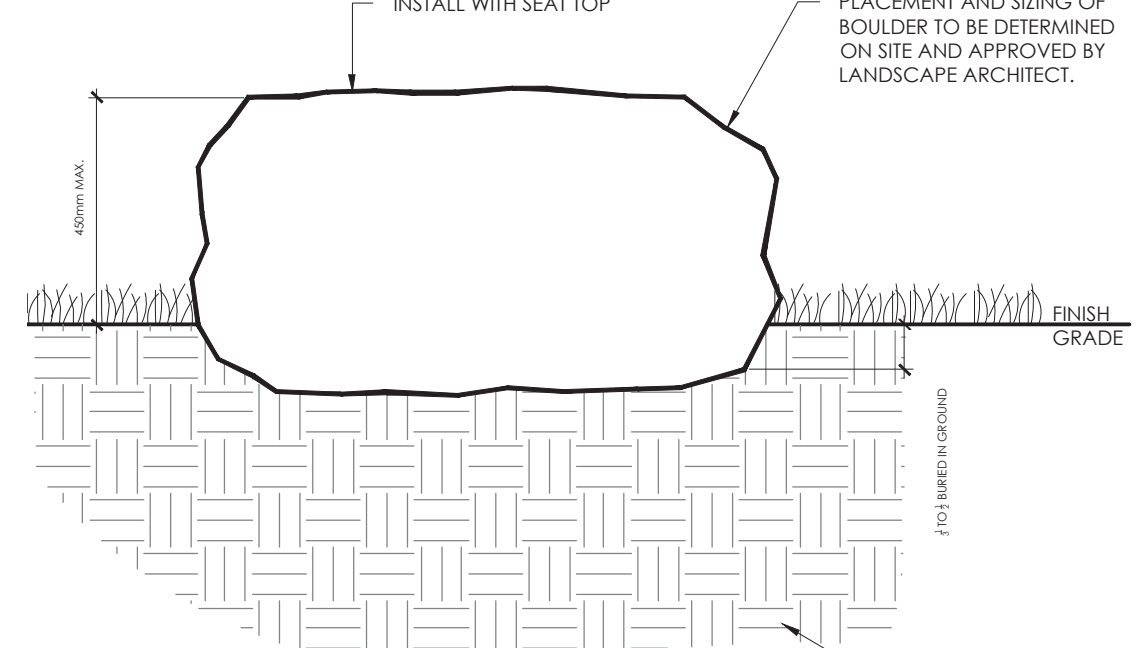
- NOTES:**
- PAVERS REFER TO SPECIFICATIONS. PAVES SHALL BE INSTALLED IN STRICT ACCORDANCE WITH THE MANUFACTURER'S RECOMMENDATIONS WITH TIGHT BUTT JOINTS OF APPROXIMATELY 3mm ON A SAND BASE. SAW CUT PAVES AS REQUIRED. USE AN APPROVED VIBRATORY COMPACTOR IN A CIRCULAR PATTERN.
 - ALL DAMAGED OR CHIPPED PAVES MUST BE REPLACED AT THE CONTRACTOR'S COST.
 - EXCAVATE AND REMOVE ALL TOPSOIL AND UNSTABLE MATERIALS OFF SITE. SUBGRADE TO BE GRADED TO SIMILAR CONTOURS AS FINISH GRADE. COMPACT SUBGRADE TO 95% S.P.D. PLACE 200mm LAYER OF GRANULAR 'A' COMPACTED TO 100% S.P.D.
 - PLACE MAXIMUM 25mm UNCOMPACTED SAND FOR LEVELLING COURSE.
 - INSTALL PER UNITS IN THE PATTERN SPECIFIED PER MANUFACTURER'S PATTERN RECOMMENDATION AND SPECIFICATIONS.
 - RETAIN EDGING WITH RIGID, HEAVY DUTY PAVES EDGE RESTRAINTS AS PER SPECIFICATIONS.
 - ALL MEASUREMENTS ARE IN MILLIMETRES UNLESS NOTED OTHERWISE.

2 LIGHT DUTY ASPHALT
N.T.S.



- NOTES:**
- APPROVED NON-WOVEN CLASS 1 GEOTEXTILE AS PER MS-22.15 WHEN WARRANTED BY SOIL CONDITION, SUBJECT TO APPROVAL BY THE LANDSCAPE ARCHITECT.
 - RETAIN RIVERSTONES WITH RIGID EDGE RESTRAINTS AS PER SPECIFICATIONS.

3 HEAVY DUTY ASPHALT
N.T.S.



- NOTES:**
- NO SHARP EDGES, CRACKS OR SPALLING.
 - NO FROST SUSCEPTIBLE BOULDER

4 LIGHT DUTY PAVERS
1:15

ELEVEN' BIKE RACK

INSTALL WITH SEAT TOP

PLACEMENT AND SIZING OF BOULDER TO BE DETERMINED ON SITE AND APPROVED BY LANDSCAPE ARCHITECT.

ELIVEN' BIKE RACK

SURFACE MOUNT INSTALLATION INSTRUCTIONS

Mark hole locations:

- Place bike rack in desired location ensuring specifications. Mark center of each hole location with a pencil.
- Note: For 3/8" anchors, a minimum 1/2" thick concrete slab is recommended for mounting.

Drill holes:

- Use hammer drill to drill 4 1/2" deep x 3/4" diameter anchor hole at each marked location using a 3/4" drill bit suitable for concrete drilling.
- NOTE: Forms+Surfaces recommends starting holes with 1/4" diameter drill bit followed by 1/2" and finally 3/4" for maximum accuracy.

Fit holes & insert anchors:

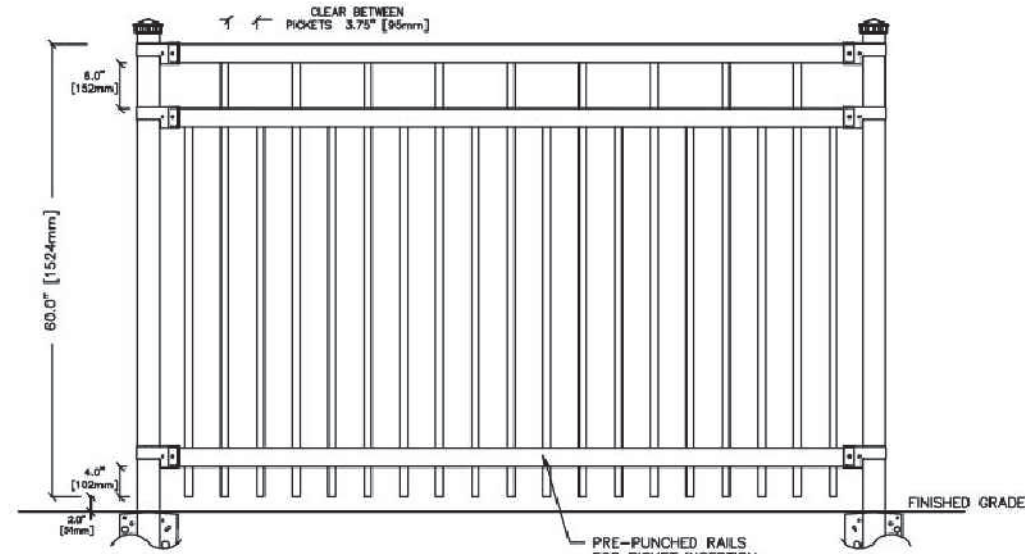
- Use compressed air and steel wire brush to clean each anchor hole in accordance with epoxy instructions.
- Use epoxy in epoxy gun to fill each anchor hole 3/4" of the hole depth in accordance with epoxy instructions.
- Insert 3/8" dia x 1-1/2" spacer anchor (fit into each anchor hole to anchor top to hole with anchor. Allow proper curing time according to cure schedule on epoxy instructions before moving on to Step 4.

FORMS+SURFACES

9	REVISION FOR FIFTH SUBMISSION	MAR 15/24
8	ISSUED FOR FIFTH SUBMISSION	FEB 13/24
7	ISSUED FOR THIRD SUBMISSION	OCT 10/23
6	RE-ISSUED FOR SECOND SUBMISSION	JUN 30/23
5	RE-ISSUED FOR SECOND SUBMISSION	MAY 31/23
4	ISSUED FOR SECOND SUBMISSION	APR 24/23
3	ISSUED FOR FIRST SUBMISSION	JUN 30/22
2	ISSUED FOR CLIENT REVIEW	JUN 10/22
1	ISSUED FOR CLIENT REVIEW	MAY 16/22

Revision
City Approval Stamp

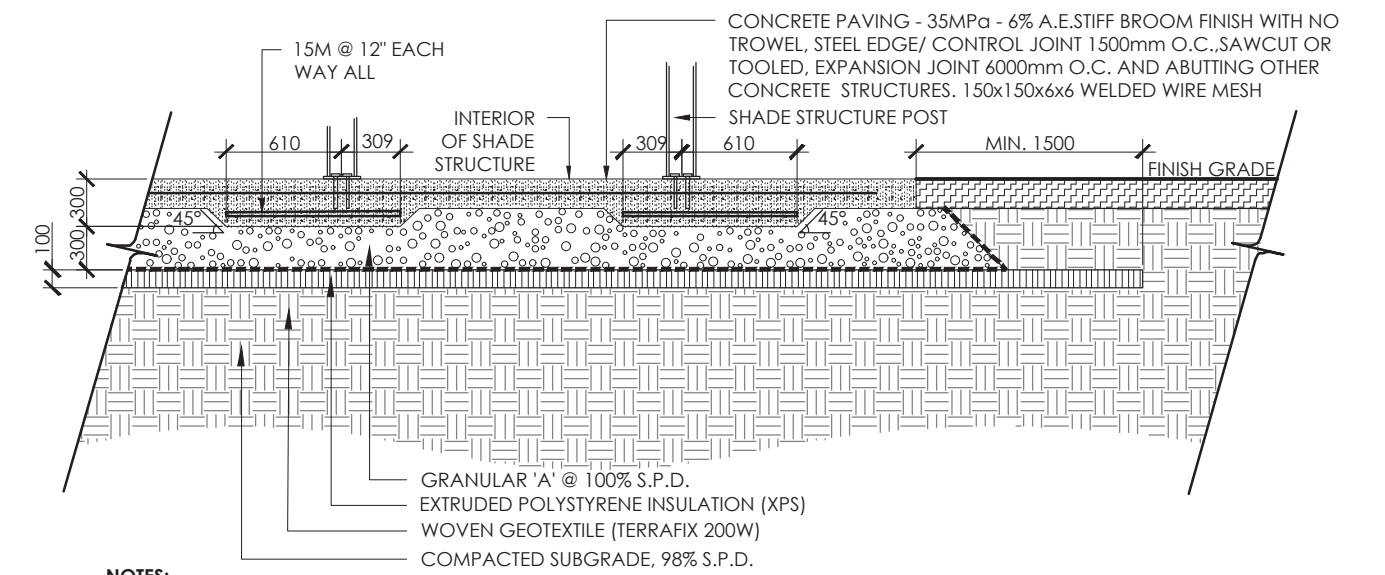
5 HEAVY DUTY PAVERS
1:15



PANEL HEIGHT	PANEL WIDTH	POST CENTERS
UP TO 6FT. HIGH	91" (231mm)	96" (2445mm)
7FT. AND HIGHER	72" (1829mm)	77" (1962mm)

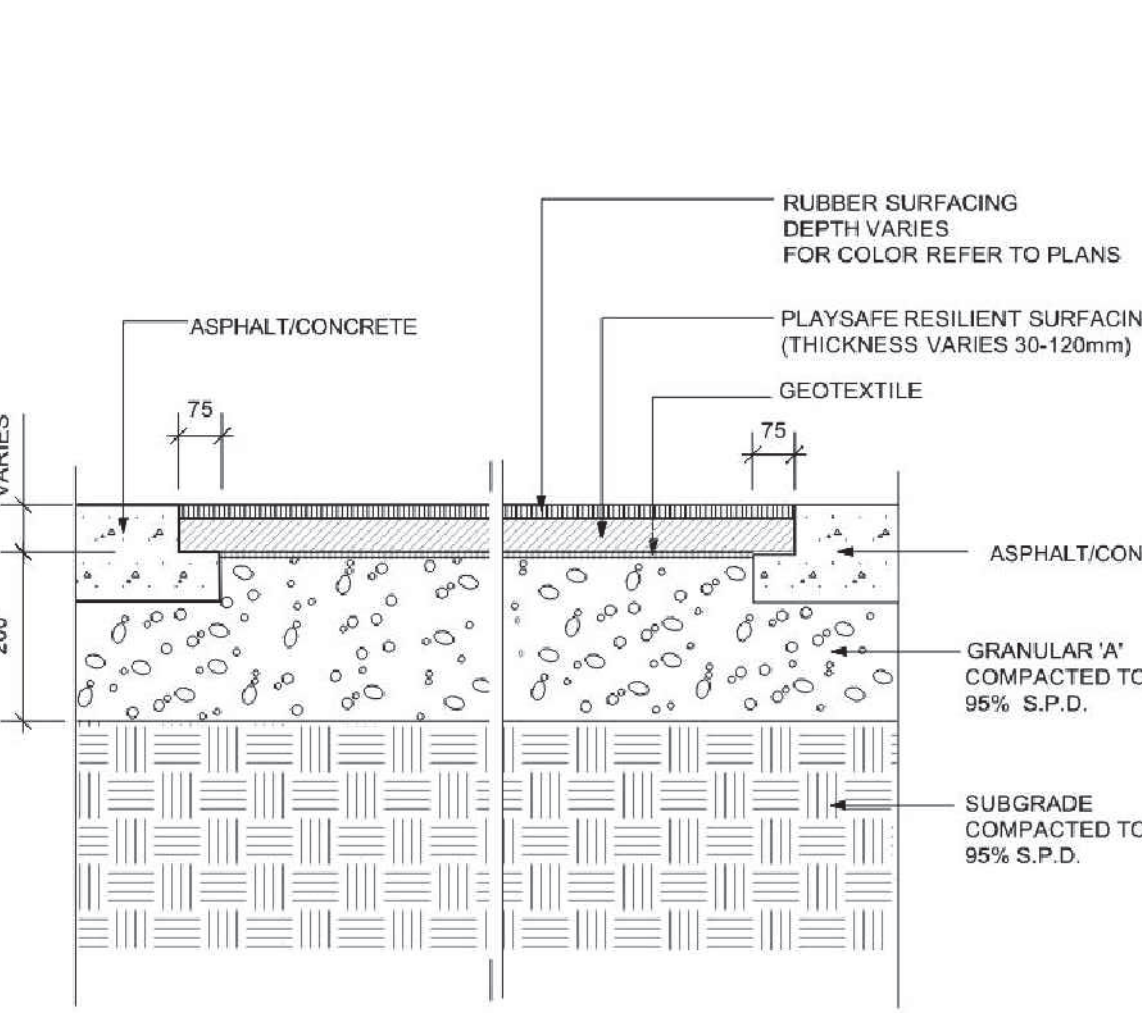
NOTE: ENQUIRE ABOUT PANEL WIDTHS OF 91" (2311) FOR PANELS ABOVE 72" (1829) HIGH

- SPECIFICATIONS:**
- POSTS:** COLD FORMED STEEL TUBING INTERIOR & EXTERIOR GALVALUME™ COATING
- RAILS:** 2MM COATED COLD FORMED TUBING (CIVIL, ALUMINUM, MAGNESIUM) COATED INTERIOR AND EXTERIOR
- FINISH:** CHROMATE CONVERSION COATING ELECTROSTATICALLY APPLIED THERMALLY BONDING POLYESTER POWDER COATING MINIMUM FILM THICKNESS 125mic.
- POSTS:** 76mm x 76mm (3"x3"), 104, 154, 254 OR 250MM. OPTION: 102mm x 102mm (4"x4") OR 150mm x 150mm (6"x6")
- POST FLANGES:** 152mm x 152mm x 6mm (6"x6"x1/4") OR 203mm x 203mm x 13mm (8"x8"x1/2")
- POST CAP:** PYRAMID OR BALL
- RAILS:** 38mm x 64mm (1 1/2" x 2 1/2") 16GA
- PICKETS:** 25mm x 25mm (1" x 1") 16GA
- FITTINGS:** 12GA STAMPED FORGED (FINISH AS DESCRIBED)
- WELDS:** STAINLESS STEEL
- COLOR:** STANDARD COLORS ARE BLACK, SEMI-BLACK, BROWN, GREEN, WHITE AND POWDER GREY. (CUSTOM COLOURS AVAILABLE UPON REQUEST)
- WARRANTY:** FIVE YEARS
- NOTES:** ALL TYPES OF GATES AVAILABLE TURNKEY PROOF US8 AVAILABLE I-COAT PROTECTION AVAILABLE (ADDITIONAL FIVE YEAR WARRANTY)



- NOTES:**
- CONCRETE TO BE 35 MPa CLASS C-1 MEETING THE REQUIREMENTS OF S.P. F-3510 AND PLACED IN ACCORDANCE WITH S.P. F-9040. SEE SPECIFICATIONS.
 - GRANULAR 'A' SHALL MEET THE REQUIREMENTS OF OPSS 1010.

7 BOULDER
1:5



- NOTE:**
- ALL DIMENSIONS ARE IN MILLIMETRES.
 - REFER TO PLAN FOR RUBBER SURFACE COLOUR.

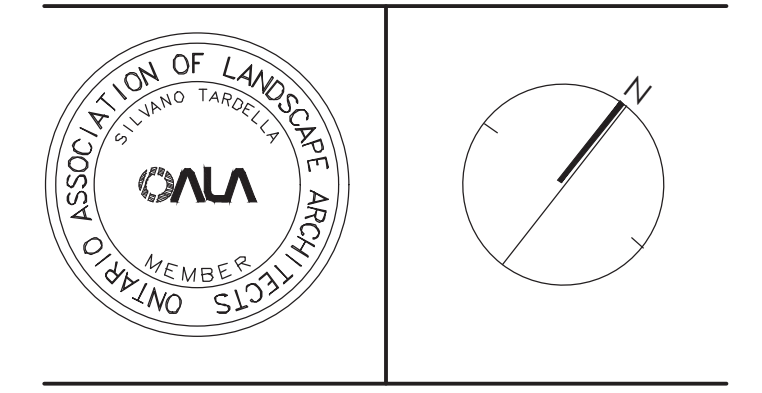
9 DECORATIVE FENCING
N.T.S.

10 THICKENED SLAB AT SHADE STRUCTURE
1:40

11 RUBBER SURFACING
N.T.S.

APPROVED
By Lily Xu at 11:39 am, Apr 03, 2024

LILY XU, MCIP, RPP
MANAGER, DEVELOPMENT REVIEW SOUTH
PLANNING, INFRASTRUCTURE & ECONOMIC
DEVELOPMENT DEPARTMENT, CITY OF OTTAWA



NAK
design strategies
1285 WELLINGTON STREET WEST, OTTAWA, ON K1Y 3A8 CANADA
T 613.237.2345 F 613.237.6423 OTTAWA@NAK-DESIGN.COM

minto
Communities

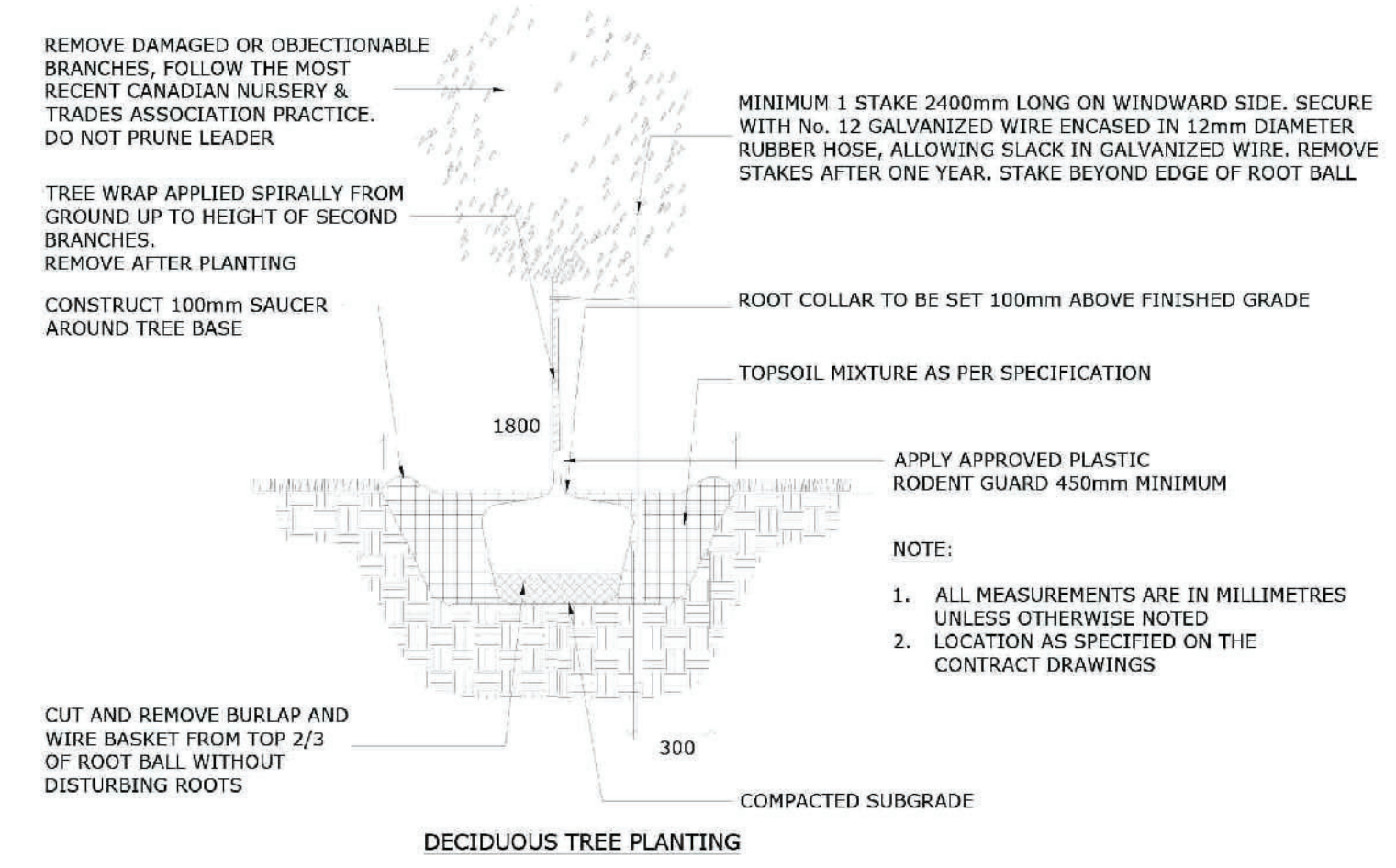
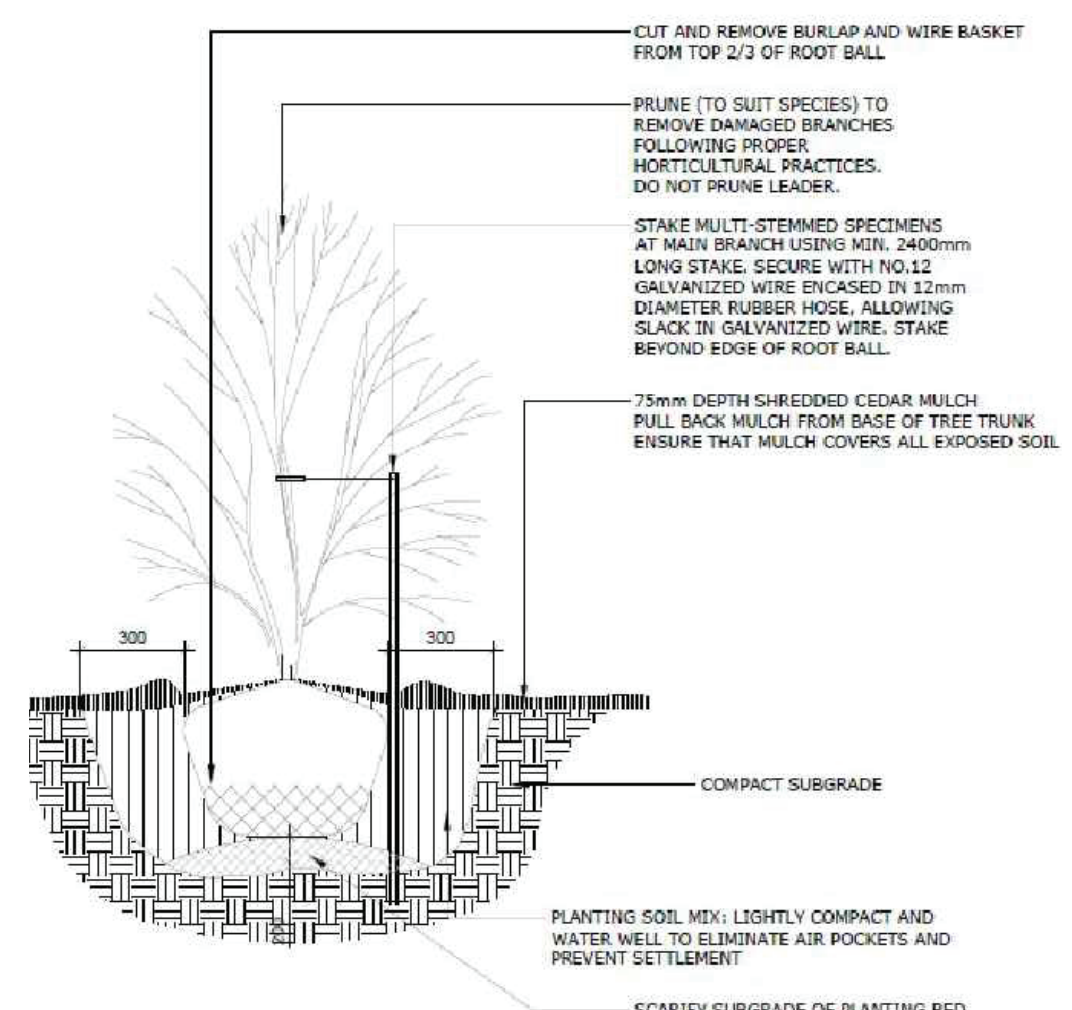
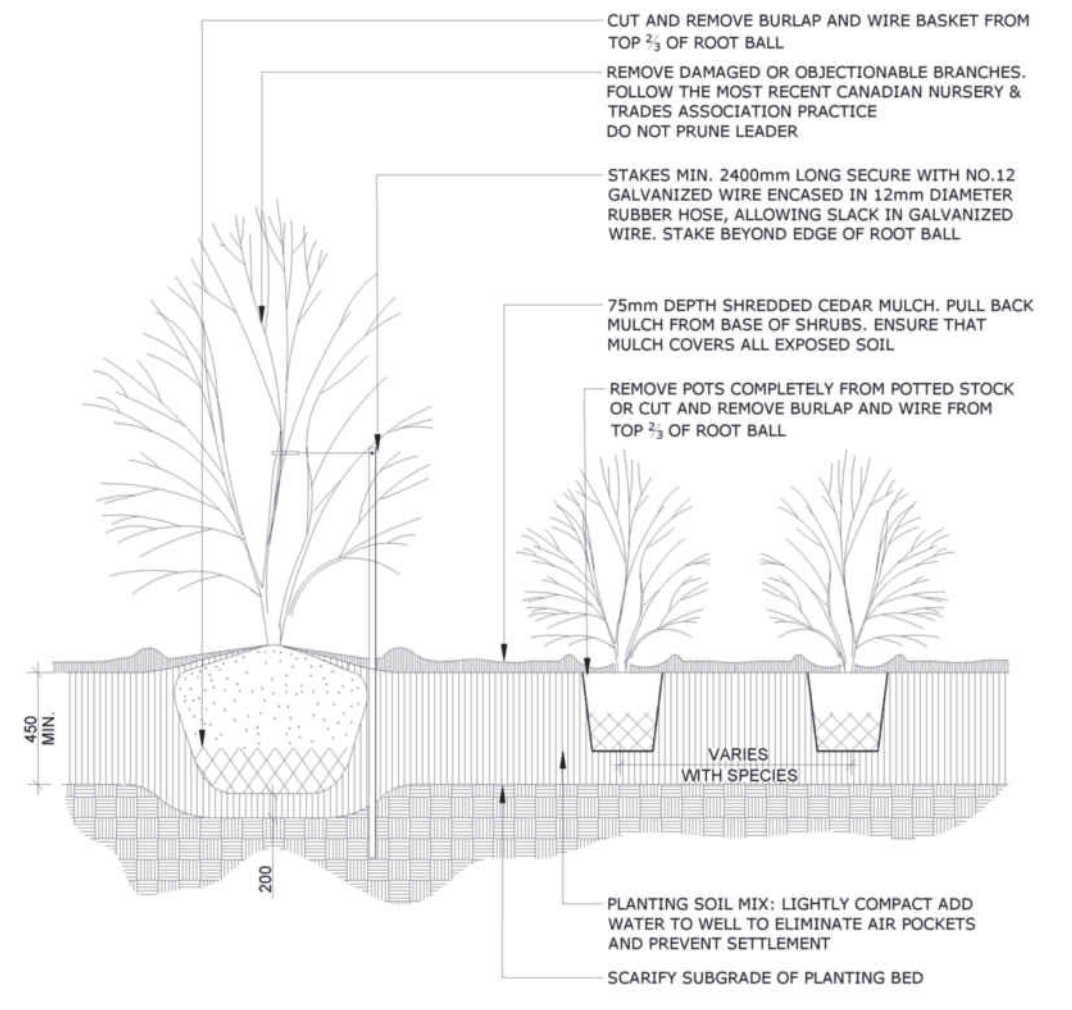
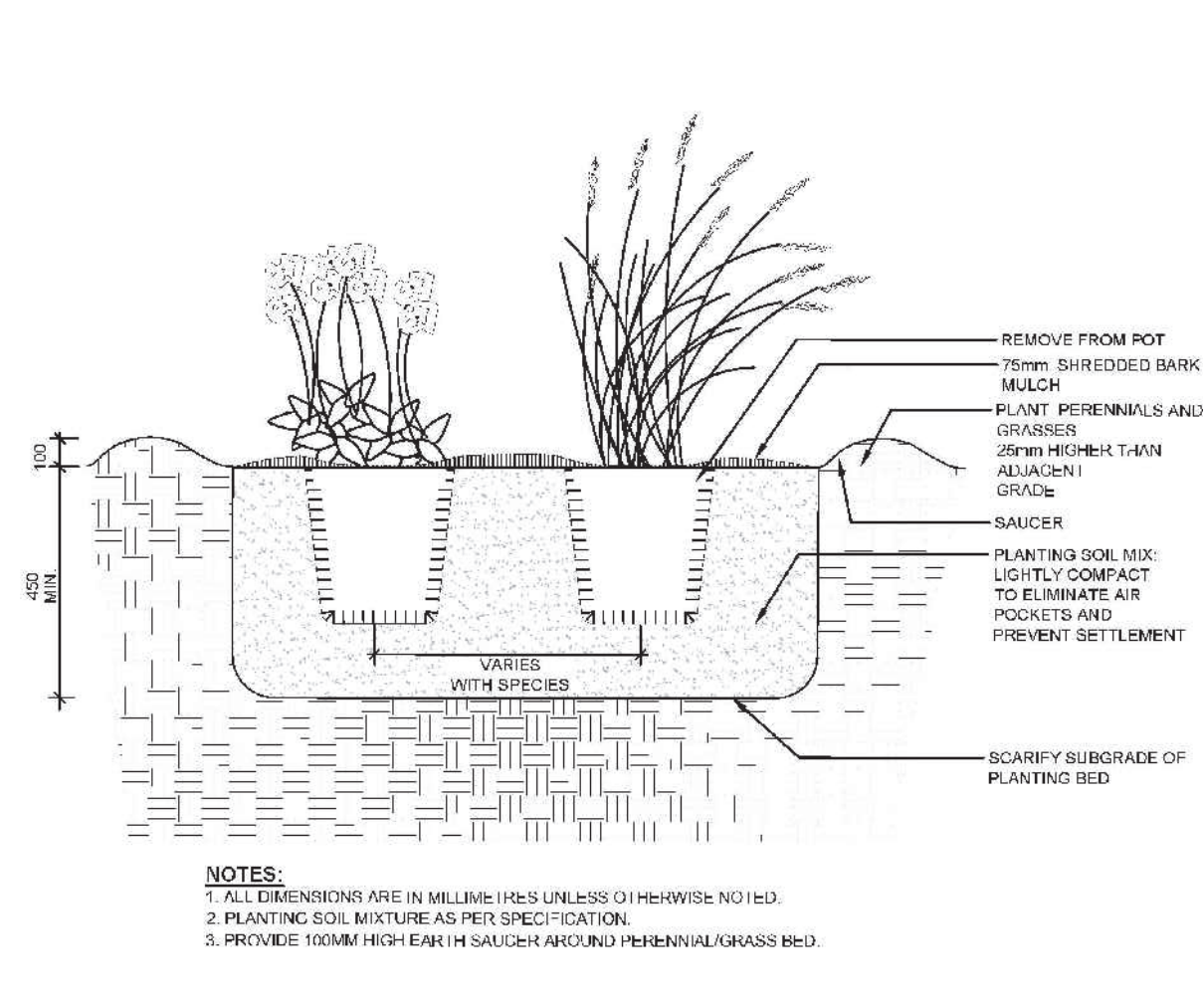
Project
BARRHAVEN TOWN CENTRE

Title
DETAILS

Date	OCTOBER 2023	Sheet	
Scale	AS NOTED		
Drawn	EL		
Checked	SC		
Job No.	21-195		

D-01

Contractor shall check all dimensions on the work and report any discrepancy to the Landscape Architect before proceeding. All drawings and specifications are the property of the Landscape Architect and must be returned at the completion of the work. This drawing is not to be used for construction until signed by the Landscape Architect.

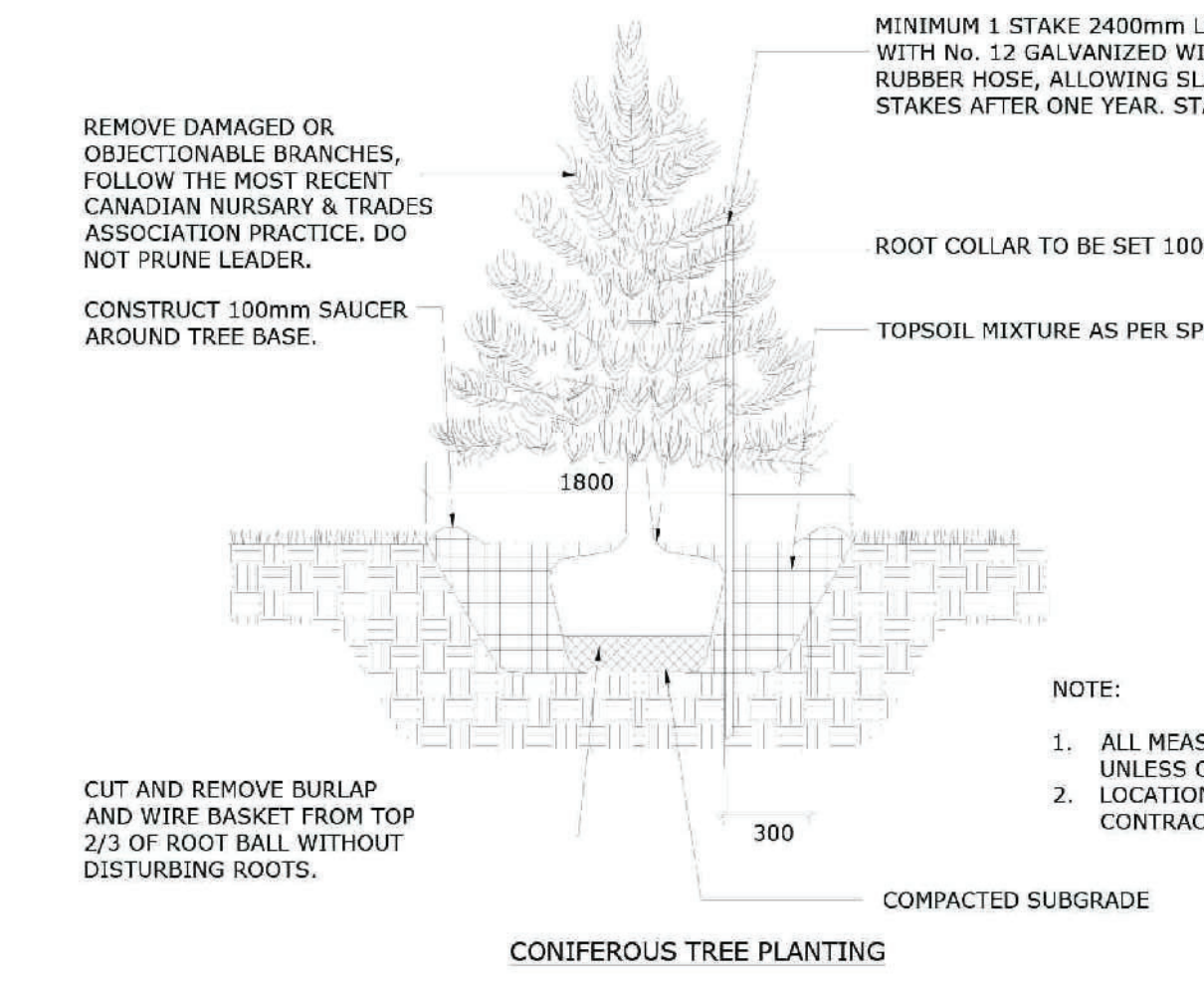


1 PERENNIAL/GRASSES PLANTING
N.T.S.

2 SHRUB PLANTING
N.T.S.

3 TREE FORM SHRUB
N.T.S.

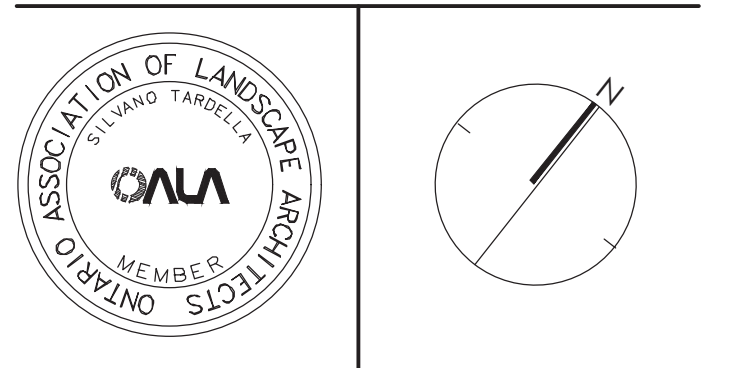
4 DECIDUOUS TREE
N.T.S.



5 CONIFEROUS TREE
N.T.S.

9	REVISION FOR FIFTH SUBMISSION	MAR 15/24
8	ISSUED FOR FIFTH SUBMISSION	FEB 13/24
7	ISSUED FOR THIRD SUBMISSION	OCT 13/23
6	RE-ISSUED FOR SECOND SUBMISSION	JUN 30/23
5	RE-ISSUED FOR SECOND SUBMISSION	MAY 31/23
4	ISSUED FOR SECOND SUBMISSION	APR 24/23
3	ISSUED FOR FIRST SUBMISSION	JUN 30/22
2	ISSUED FOR CLIENT REVIEW	JUN 10/22
1	ISSUED FOR CLIENT REVIEW	MAY 16/22

Revision
City Approval Stamp



NAK
design strategies
1285 WELLINGTON STREET WEST, OTTAWA, ON K1Y 3A8 CANADA
T 613.237.2345 F 613.237.4423 OTTAWA@NAK-DESIGN.COM



Project

BARRHAVEN TOWN CENTRE

Title
DETAILS

Date	OCTOBER 2023	Sheet	
Scale	N.T.S.		
Drawn	EL		
Checked	SC		
Job No.	21-195		

APPROVED
By Lily Xu at 11:39 am, Apr 03, 2024



LILY XU, MCIP, RPP
MANAGER, DEVELOPMENT REVIEW SOUTH
PLANNING, INFRASTRUCTURE & ECONOMIC
DEVELOPMENT DEPARTMENT, CITY OF OTTAWA

CITY FILE N° D07-12-22-0104 CITY PLAN N° 18822