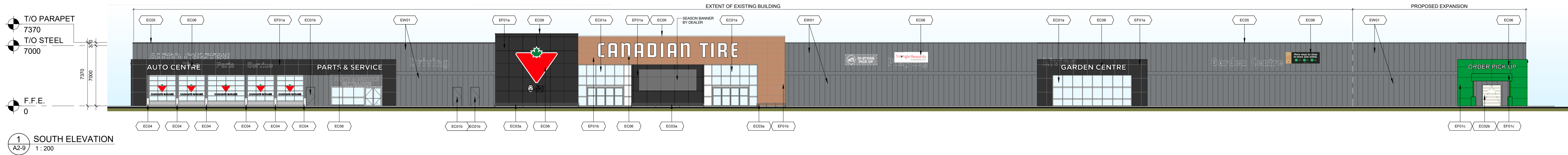


This drawing is an instrument of service, it is prepared and issued by the company of Turner Fleischer Architects Inc. The company shall not be held responsible for any errors or omissions in this drawing and shall not be held responsible for any actions taken in reliance on this drawing. The client is advised that this drawing is prepared for the specific project and site conditions and is not intended to be used for any other project or site conditions. The client is advised that this drawing is prepared for the specific project and site conditions and is not intended to be used for any other project or site conditions. The client is advised that this drawing is prepared for the specific project and site conditions and is not intended to be used for any other project or site conditions.

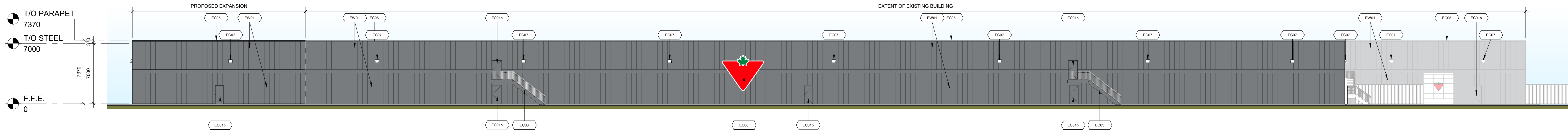
EXTERIOR FINISH SCHEDULE

EW01	CONCRETE FINISH: CONCRETE STEEL WORK
EF01A	ALUMINUM COMPOSITE PANEL: COLOR: BLACK (AS PER APPROVED EQUIVALENT) FINISH: GLOSS (AS PER APPROVED EQUIVALENT) NOTE: CONTRACTOR TO PROVIDE COLOR CHIP SAMPLES FOR APPROVAL PRIOR TO ORDERING OF MATERIALS.
EF01B	ALUMINUM COMPOSITE PANEL: COLOR: CUSTOM GREEN (AS PER APPROVED EQUIVALENT) FINISH: GLOSS (AS PER APPROVED EQUIVALENT) NOTE: CONTRACTOR TO PROVIDE COLOR CHIP SAMPLES FOR APPROVAL PRIOR TO ORDERING OF MATERIALS.
EF01C	ALUMINUM COMPOSITE PANEL: COLOR: CUSTOM GREEN (AS PER APPROVED EQUIVALENT) FINISH: GLOSS (AS PER APPROVED EQUIVALENT) NOTE: CONTRACTOR TO PROVIDE COLOR CHIP SAMPLES FOR APPROVAL PRIOR TO ORDERING OF MATERIALS.
EC01A	GLASS DOORS & WINDOWS: GLASS: CLEAR INSULATED GLASS (LOW E COATING) FRAMES: BLACK ANODIZED ALUMINUM NOTE: CONTRACTOR TO PROVIDE COLOR CHIP SAMPLES FOR APPROVAL PRIOR TO ORDERING OF MATERIALS.
EC01B	GLASS DOORS & WINDOWS: GLASS: CLEAR INSULATED GLASS (LOW E COATING) FRAMES: BLACK ANODIZED ALUMINUM NOTE: CONTRACTOR TO PROVIDE COLOR CHIP SAMPLES FOR APPROVAL PRIOR TO ORDERING OF MATERIALS.
EC02A	INTERIORS DOOR & WINDOW FRAMES: FRAMES: FACTORY WHITE COLOR: PAINTED STEEL WORK
EC02B	INTERIORS DOOR & WINDOW FRAMES: FRAMES: FACTORY WHITE COLOR: PAINTED STEEL WORK
EC03	EXPOSED STEEL STUDS: COLOR: BLACK ANODIZED ALUMINUM FRAMES: FACTORY WHITE COLOR: PAINTED STEEL WORK
EC04	STAINLESS STEEL CHECKER PLATE: COLOR: STAINLESS STEEL FRAMES: FACTORY WHITE COLOR: PAINTED STEEL WORK
EC05	WELDED METAL FLASHING: COLOR: BLACK ANODIZED ALUMINUM FRAMES: FACTORY WHITE COLOR: PAINTED STEEL WORK
EC06	EXTERIOR ROOFING: COLOR: BLACK ANODIZED ALUMINUM FRAMES: FACTORY WHITE COLOR: PAINTED STEEL WORK
EC07	EXTERIOR ROOFING: COLOR: BLACK ANODIZED ALUMINUM FRAMES: FACTORY WHITE COLOR: PAINTED STEEL WORK
EC08A	EXTERIOR ROOFING: COLOR: BLACK ANODIZED ALUMINUM FRAMES: FACTORY WHITE COLOR: PAINTED STEEL WORK
EC08B	EXTERIOR ROOFING: COLOR: BLACK ANODIZED ALUMINUM FRAMES: FACTORY WHITE COLOR: PAINTED STEEL WORK

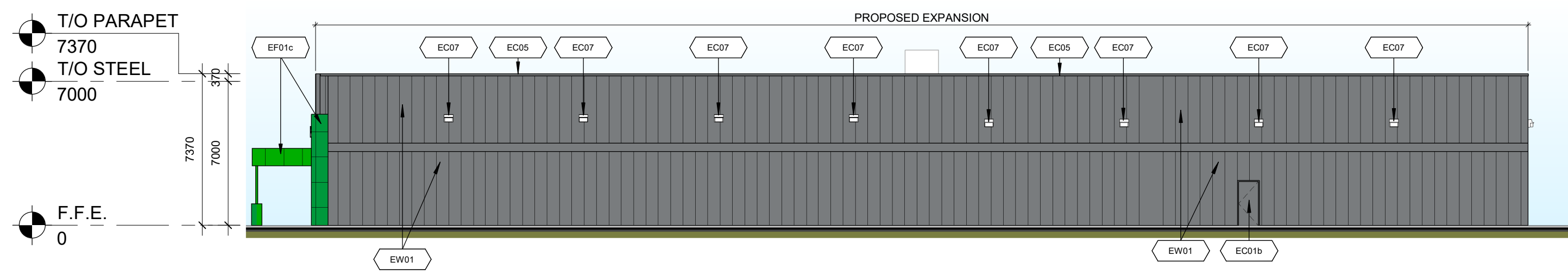
GENERAL NOTES:
1. EXTERIOR FINISH SCHEDULE ARE ONLY A REPRESENTATION OF THE COLOR & FINISH. CONTRACTOR TO PROVIDE COLOR CHIP SAMPLES FOR APPROVAL PRIOR TO ORDERING OF MATERIALS.
2. CONTRACTOR TO PROVIDE COLOR CHIP SAMPLES FOR APPROVAL PRIOR TO ORDERING OF MATERIALS.
3. CONTRACTOR TO PROVIDE COLOR CHIP SAMPLES FOR APPROVAL PRIOR TO ORDERING OF MATERIALS.
4. CONTRACTOR TO PROVIDE COLOR CHIP SAMPLES FOR APPROVAL PRIOR TO ORDERING OF MATERIALS.
5. CONTRACTOR TO PROVIDE COLOR CHIP SAMPLES FOR APPROVAL PRIOR TO ORDERING OF MATERIALS.



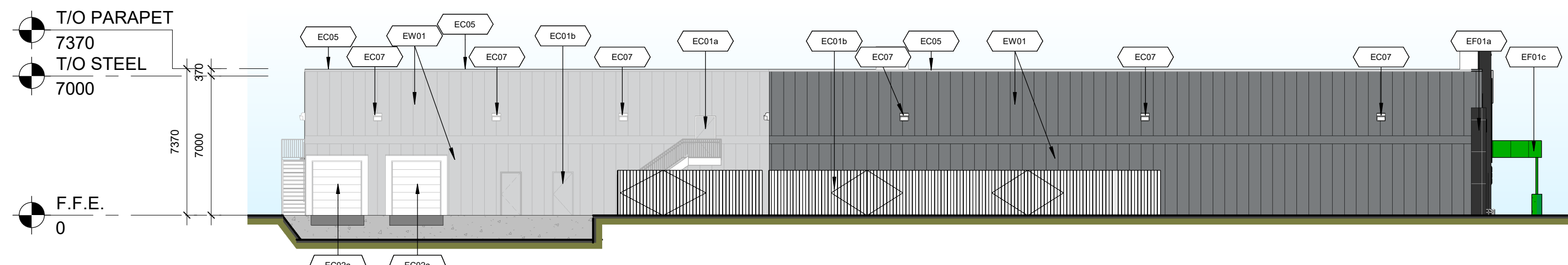
1 SOUTH ELEVATION
A2-9 / 1:200



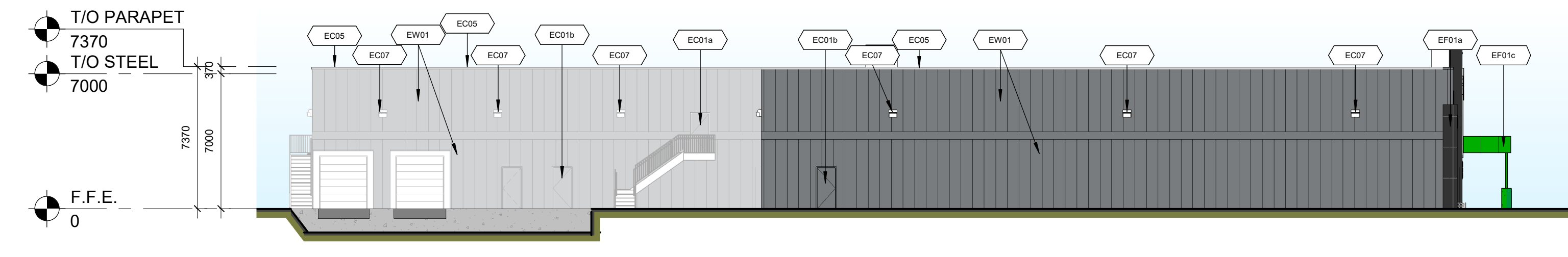
2 NORTH ELEVATION
A2-9 / 1:200



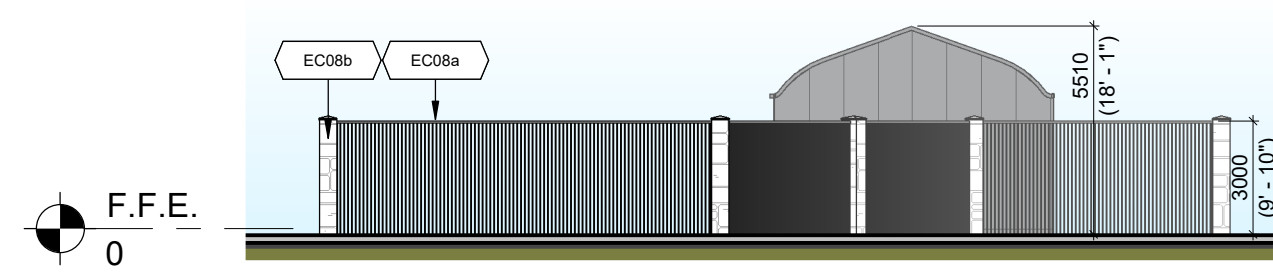
3 EAST ELEVATION
A2-9 / 1:200



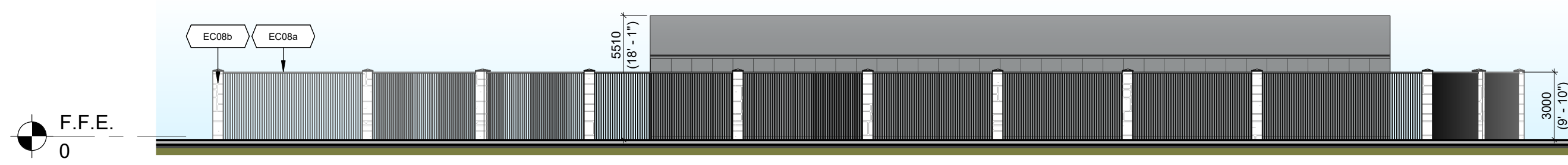
4 WEST ELEVATION
A2-9 / 1:200



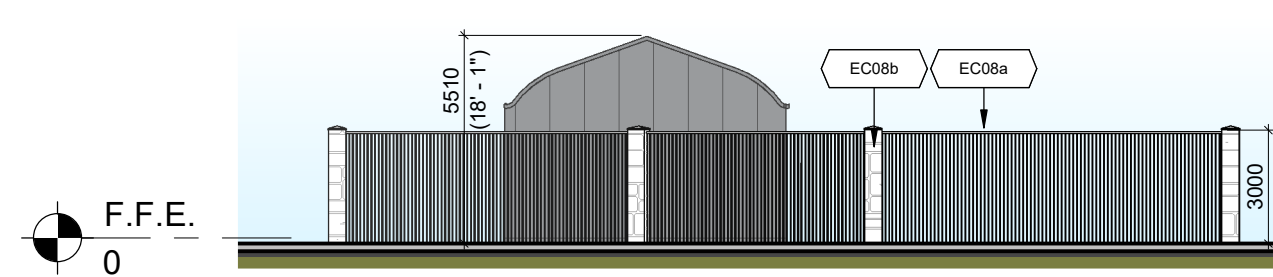
5 WEST ELEVATION - BEYOND
A2-9 / 1:200



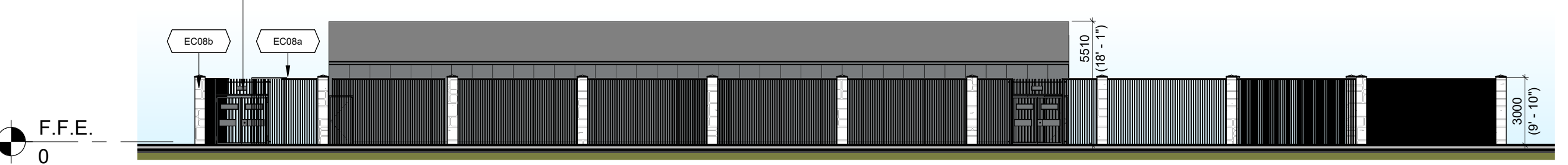
6 GARDEN CENTRE - SOUTH ELEVATION
A2-9 / 1:200



7 GARDEN CENTRE - EAST ELEVATION
A2-9 / 1:200



8 GARDEN CENTRE - NORTH ELEVATION
A2-9 / 1:200



9 GARDEN CENTRE - WEST ELEVATION
A2-9 / 1:200

APPROVED
By Lily Xu at 10:15 am, Apr 02, 2024

LILY XU, MCIP, RPP
MANAGER, DEVELOPMENT REVIEW SOUTH
PLANNING, INFRASTRUCTURE & ECONOMIC
DEVELOPMENT DEPARTMENT, CITY OF OTTAWA

#	DATE	DESCRIPTION	BY
1	2023-10-05	ISSUED FOR COORDINATION	NAR
2	2023-09-15	ISSUED FOR COORDINATION	FPI
3	2023-08-28	ISSUED FOR COORDINATION	FPI
4	2023-08-02	ISSUED FOR COORDINATION	FPI
5	2023-07-13	ISSUED FOR COORDINATION	FPI
6	2023-06-09	ISSUED FOR COORDINATION	FPI
7	2023-05-17	ISSUED FOR COORDINATION	FPI



PROJECT
PROPOSED CANADIAN TIRE STORE#412 EXPANSION AND RENOVATION
BARRHAVEN, ON

DRAWING
EXTERIOR ELEVATIONS

PROJECT NO:
05-26450

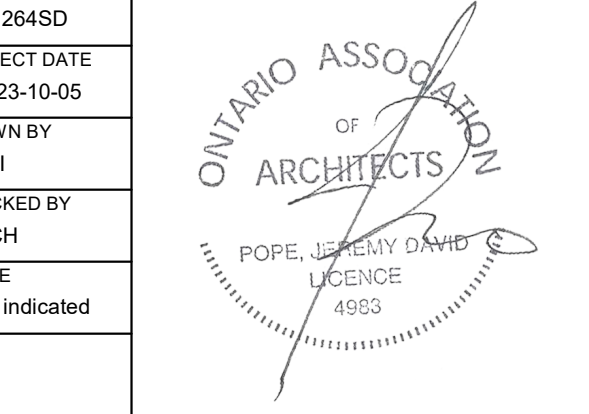
PROJECT DATE:
2023-10-05

DRAWN BY:
FPI

CHECKED BY:
RCH

SCALE:
As Indicated

DRAWING NO:
A2-9



POPULOUS ARCHITECTS
ARCHITECTS
1000
1000

DATE: 2023-10-05 10:59:09 AM