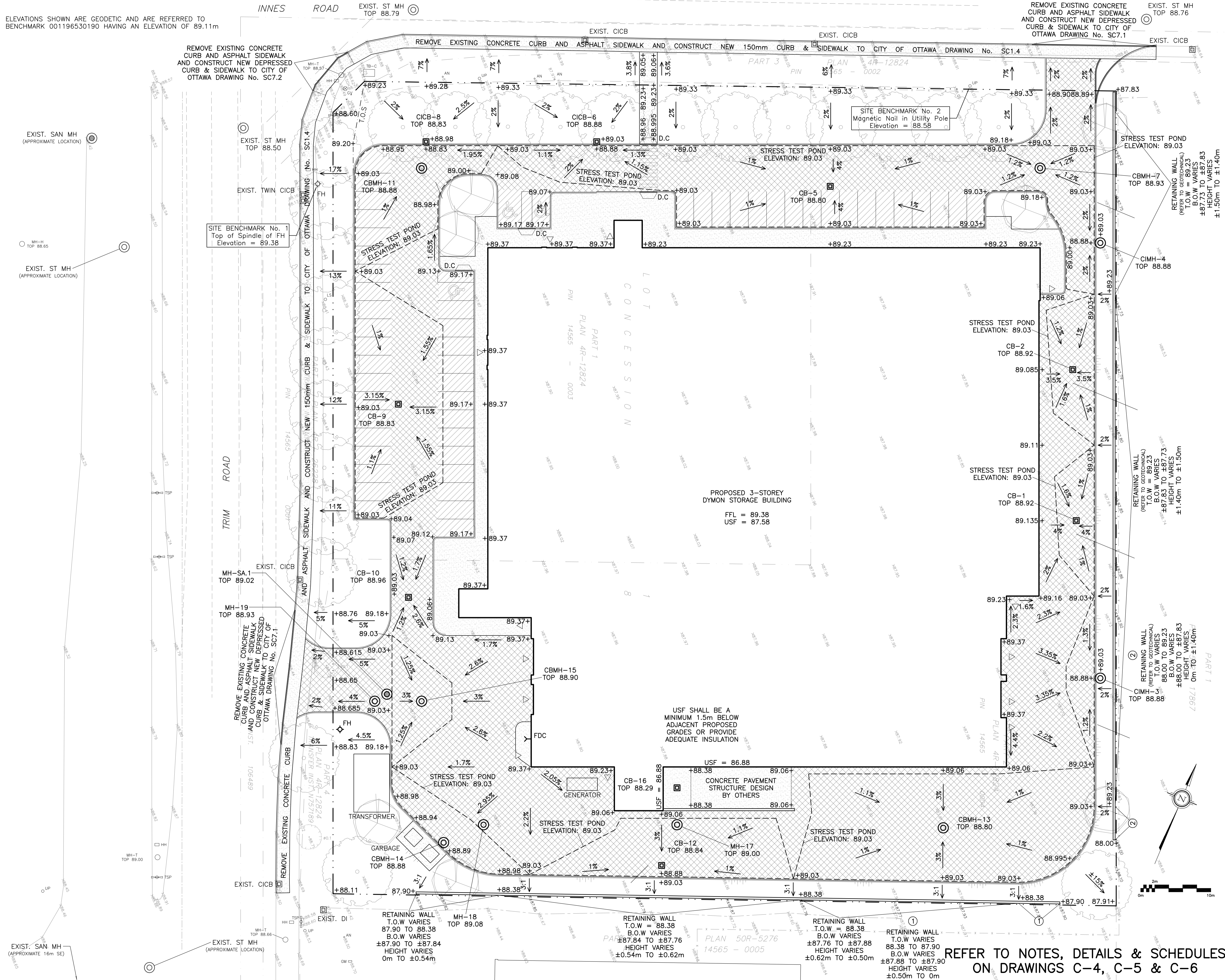


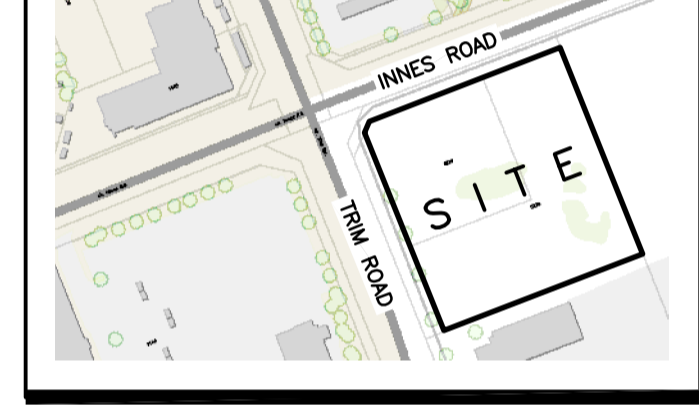
ELEVATIONS SHOWN ARE GEODETIC AND ARE REFERRED TO BENCHMARK 001196530190 HAVING AN ELEVATION OF 89.11m



LEGEND

- FFL FINISHED FLOOR ELEVATION
- USF UNDERSIDE OF FOOTING
- PROPERTY LINE
- CB CATCH BASIN
- CICB CURB INLET CATCH BASIN
- MH STORM MANHOLE
- CBMH CATCH BASIN MANHOLE
- CIMH CURB INLET MANHOLE
- MH SANITARY MANHOLE
- FH FIRE HYDRANT
- FDC FIRE DEPARTMENT CONNECTION
- +99.99 PROPOSED GRADE ELEVATION
- 2% PROPOSED SLOPE OF GRADE
- T.O.S TOP OF SLOPE
- 150mm BARRIER CURB
- D.C DEPRESSED CURB
- MEDIUM DUTY PAVEMENT
- HEAVY DUTY PAVEMENT
- CONCRETE

KEY PLAN



No.	DATE	REVISION
5	MAR 26-24	RE-ISSUED FOR APPROVAL
4	NOV 15-23	RE-ISSUED FOR APPROVAL
3	JUN 30-23	RE-ISSUED FOR APPROVAL
2	DEC 21-22	ISSUED FOR APPROVAL
1	DEC 19-22	ISSUED FOR COORDINATION

D. B. GRAY ENGINEERING INC.
 Stormwater Management - Grading & Drainage - Storm & Sanitary Sewers - Watermain
 700 Long Point Circle 613-425-8044
 Ottawa, Ontario d.gray@dbgrayengineering.com

Project
PROPOSED 3-STOREY DYMON STORAGE BUILDING
 5210 INNES ROAD
 OTTAWA, ONTARIO

GRADING PLAN

Engineer's Seal

 NOT VALID UNLESS SIGNED & DATED

Drawn D.B.G.
 H. Scale 1:250
 V. Scale
 Date DEC 19-22
 Job No. 21025

Drawing No.
C-2
 of 9

REFER TO NOTES, DETAILS & SCHEDULES ON DRAWINGS C-4, C-5 & C-6