

LEGEND

DC	PROPOSED BARRIER CURB	STW	PROPOSED STORM MANHOLE & SEWER (WT-WATER TIGHT COVER)
DC	PROPOSED DEPRESSED CURB	STW	PROPOSED STORM MANHOLE & SEWER (WT-WATER TIGHT COVER)
DA	DRAINAGE AREA LIMITS	CBM	PROPOSED CATCH-BASIN MANHOLE
AP	APPROXIMATE PONDING LIMITS	CB	PROPOSED CATCH-BASIN
A-2	POST-DEVELOPMENT AREA ID	ICD	PROPOSED STORM SEWER AND FLOW DIRECTION
0.129	POST-DEVELOPMENT DRAINAGE AREA (m ²)	ICD	PROPOSED STORM SEWER AND FLOW DIRECTION
0.82	1.5 YEAR WEIGHTED RUNOFF COEFFICIENT	ICD	EMERGENCY OVERLAND FLOW ROUTE
STM 120	PROPOSED STORM MANHOLE & SEWER		
STM 128	PROPOSED STORM MANHOLE & SEWER (WT-WATER TIGHT COVER)		
CBM	PROPOSED CATCH-BASIN MANHOLE		
CB	PROPOSED CATCH-BASIN		
ICD	PROPOSED STORM SEWER AND FLOW DIRECTION		
ICD	PROPOSED STORM SEWER AND FLOW DIRECTION		
ICD	EMERGENCY OVERLAND FLOW ROUTE		

- GENERAL NOTES:**
- COORDINATE AND SCHEDULE ALL WORK WITH OTHER TRADES AND CONTRACTORS.
 - DETERMINE THE EXACT LOCATION, SIZE, MATERIAL AND ELEVATION OF ALL EXISTING UTILITIES PRIOR TO COMMENCING CONSTRUCTION. PROTECT AND ASSUME RESPONSIBILITY FOR ALL EXISTING UTILITIES WHETHER OR NOT SHOWN ON THIS DRAWING.
 - OBTAIN ALL NECESSARY PERMITS AND APPROVALS FROM THE CITY OF OTTAWA BEFORE COMMENCING CONSTRUCTION.
 - BEFORE COMMENCING CONSTRUCTION OBTAIN AND PROVIDE PROOF OF COMPREHENSIVE ALL RISK AND OPERATIONAL LIABILITY INSURANCE FOR \$5,000,000.00. INSURANCE POLICY TO NAME OWNERS, ENGINEERS AND ARCHITECTS AS CO-INSURED.
 - COMPLETE ALL WORKS IN ACCORDANCE WITH THE MOST CURRENT CITY OF OTTAWA STANDARDS AND SPECIFICATIONS USING THE CURRENT GUIDELINES BY LAWS AND STANDARDS INCLUDING MATERIALS OF CONSTRUCTION, DIMENSION AND ALL RELEVANT REFERENCES TO OPCS, OPCS & WWW GUIDELINES. ALL CURRENT VERSIONS AND AS AMENDED.
 - RESTORE ALL DISTURBED AREAS ON-SITE AND OFF-SITE, INCLUDING TRENCHES AND SURFACES ON PUBLIC ROAD ALLOWANCES TO EXISTING CONDITIONS OR BETTER TO THE SATISFACTION OF THE CITY OF OTTAWA AND ENGINEER.
 - REMOVE FROM SITE ALL EXCESS EXCAVATED MATERIAL, ORGANIC MATERIAL AND DEBRIS UNLESS OTHERWISE INSTRUCTED BY ENGINEER. EXCAVATE AND REMOVE FROM SITE ANY CONTAMINATED MATERIAL. ALL CONTAMINATED MATERIAL SHALL BE DISPOSED OF AT A LICENSED LANDFILL FACILITY.
 - ALL ELEVATIONS ARE GEODETIC.
 - REFER TO THE GEOTECHNICAL INVESTIGATION AND HYDROGEOLOGICAL ASSESSMENT - 600 MARCH ROAD - (REPORT NO. 1206073-RPT-1), PREPARED BY GHD ON JUNE 16, 2023. FOR SUBSURFACE CONDITIONS, CONSTRUCTION RECOMMENDATIONS AND GEOTECHNICAL INSPECTION REQUIREMENTS. THE GEOTECHNICAL CONSULTANT IS TO REVIEW ON-SITE CONDITIONS AFTER EXCAVATION PRIOR TO PLACEMENT OF THE GRANULAR MATERIAL.
 - REFER TO ARCHITECTS AND LANDSCAPE ARCHITECTS DRAWINGS FOR BUILDING AND HARDSURFACE AREAS AND DIMENSIONS.
 - REFER TO THE STORMWATER MANAGEMENT REPORT (R-2023-143) PREPARED BY NOVATECH.
 - SAW CUT AND KEY GRIND ASPHALT AT ALL ROAD CUTS AND ASPHALT TIE IN POINTS AS PER CITY OF OTTAWA STANDARDS (R10).

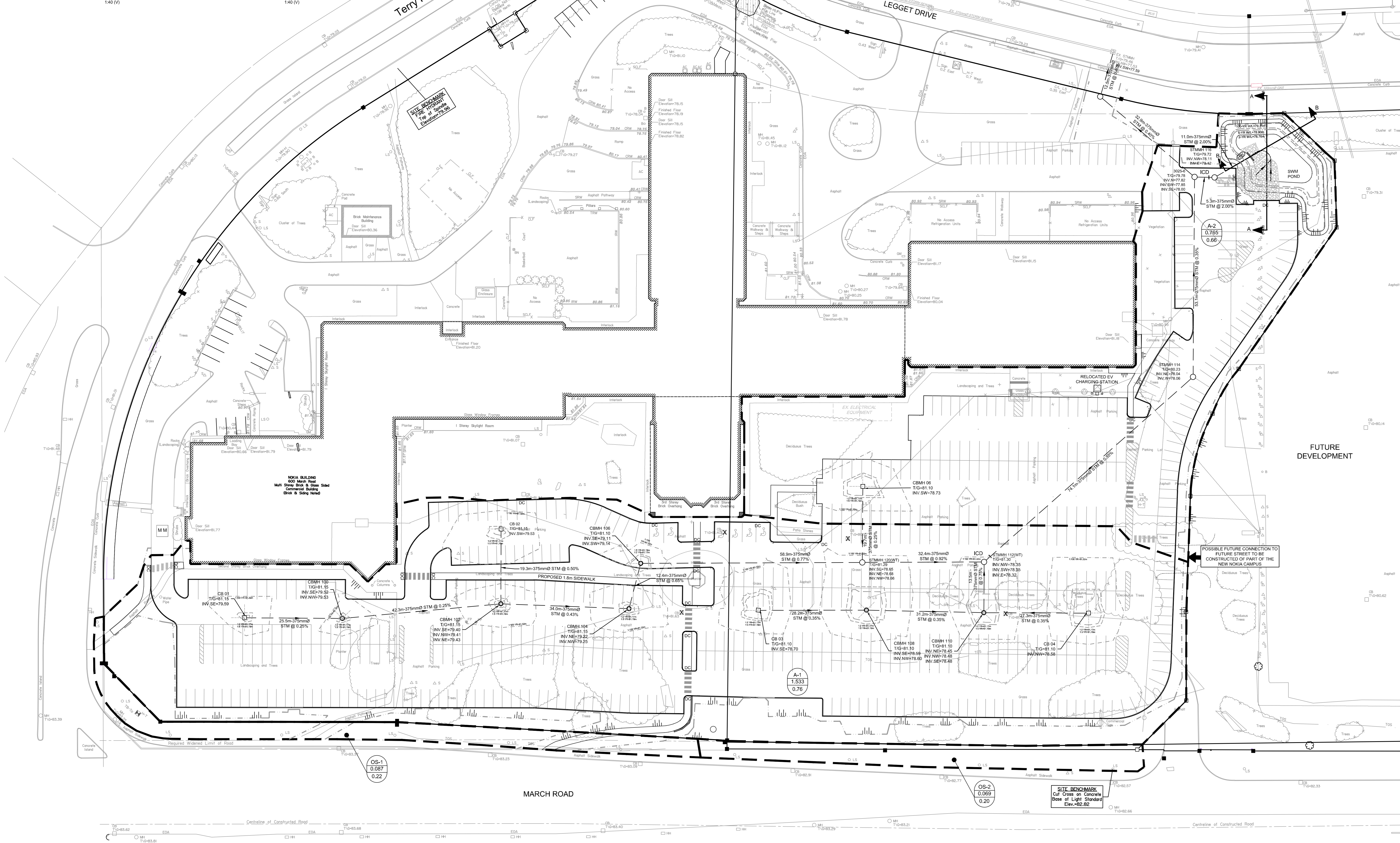
- BENCHMARK NOTES:**
- ELEVATIONS SHOWN ARE GEODETIC AND ARE REFERRED TO THE CGVD25 GEODETIC DATUM.
 - IT IS THE RESPONSIBILITY OF THE USER OF THIS INFORMATION TO VERIFY THAT THE JOB BENCHMARK HAS NOT BEEN ALTERED OR DISTURBED AND THAT ITS RELATIVE ELEVATION AND DESCRIPTION AGREES WITH THE INFORMATION SHOWN ON THIS DRAWING.
 - BENCHMARK WAS PROVIDED ON SURVEYOR'S REAL PROPERTY REPORT PART 1, PLAN OF PART OF LOT 5, CONCESSION 2 (OTTAWA FRONT) GEOGRAPHIC TOWNSHIP OF GLOUCESTER, CITY OF OTTAWA, SURVEYED BY ANNIS, OSULLIVAN AND VOLLEBECK LTD.

INLET CONTROL DEVICE DATA TABLE: AREA A-1 (INCL. AREAS OS-1 & OS-2)

DESIGN EVENT	ICD TYPE (PLUG TYPE)	OUTLET STRUCTURE	SWAPPER OF OUTLET PIPE (mm)	PEAK DESIGN FLOW (L/s)	DESIGN HEAD (m)	DESIGN WATER ELEVATION (m)	DESIGN WATER ELEVATION (m)	VOLUME (m ³)	AVAILABLE STORAGE
12 HR	18mm RA	STM#4 112	375mm PVC	58.2	2.68	81.17	82.4	108.0m ³	108.0m ³
12 HR	18mm RA	STM#4 112	1200mm PVC	58.2	2.68	81.17	82.4	108.0m ³	108.0m ³
15 MIN	18mm RA	STM#4 112	375mm PVC	103.8	2.61	81.32	82.7	108.0m ³	108.0m ³

INLET CONTROL DEVICE DATA TABLE: AREA A2 (POND)

DESIGN EVENT	ICD TYPE (PLUG TYPE)	OUTLET STRUCTURE	SWAPPER OF OUTLET PIPE (mm)	PEAK DESIGN FLOW (L/s)	DESIGN HEAD (m)	DESIGN WATER ELEVATION (m)	DESIGN WATER ELEVATION (m)	VOLUME (m ³)	AVAILABLE STORAGE
12 HR	18mm RA	STM#4 116	375mm PVC	25.4	0.86	79.76	82.1	48.5m ³	48.5m ³
15 MIN	18mm RA	STM#4 116	375mm PVC	33.3	0.86	79.76	82.1	48.5m ³	48.5m ³
1500 HR	18mm RA	STM#4 116	375mm PVC	32.2	1.20	79.57	80.4	28.4	28.4



APPROVED
By Krishon Walker at 9:48 am, Mar 05, 2024

Signature
KRISHON WALKER
PLANNER
PLANNING, REAL ESTATE & ECONOMIC DEVELOPMENT
DEPARTMENT, CITY OF OTTAWA

NOTE:
THE POSITION OF ALL POLE LINES, CONDUITS, WATERMANS, SEWERS AND OTHER UNDERGROUND AND OVERGROUND UTILITIES AND STRUCTURES IS NOT NECESSARILY SHOWN ON THE CONTRACT DRAWINGS, AND WHERE SHOWN, THE ACCURACY OF THE POSITION OF SUCH UTILITIES AND STRUCTURES IS NOT GUARANTEED. BEFORE STARTING WORK, DETERMINE THE EXACT LOCATION OF ALL SUCH UTILITIES AND STRUCTURES AND ASSUME ALL LIABILITY FOR DAMAGE TO THEM.

OWNER INFORMATION
NOKIA CO COLLIERS
181 BAY STREET, SUITE 1400
TORONTO, ONTARIO, M5J 2V1
ERIK CUNNINGTON
PHONE: (416) 920-0155
EMAIL: erik.cunnington@colliers.com

SURVEYOR
ANNIS, OSULLIVAN, VOLLEBECK LTD.
14 CONCOURSE GATE, SUITE 400
OTTAWA, ONTARIO, K2E 7S6
PHONE: (613) 727-0850

CIVIL ENGINEER/LANDSCAPE ARCHITECT
NOVATECH ENGINEERS, PLANNERS & LANDSCAPE ARCHITECTS
240 MICHAEL COWPLAND DRIVE, SUITE 200
OTTAWA, ONTARIO, K2M 1P6
PHONE: (613) 254-9643

REVISION

3.	REVISED AS PER CITY COMMENTS	FEB 14/24	FST
2.	ISSUED FOR SPC APPROVAL	NOV 7/23	FST
1.	PRELIMINARY PLANS ISSUED TO CITY	OCT 29/23	FST

SCALE

1:400

0 4 8 12 16

FOR REVIEW ONLY

CV	FST
CV	FST
FST	FST
FST	FST



NOVATECH
Engineers, Planners & Landscape Architects
Suite 200, 340 Michael Cowpland Drive
Ottawa, Ontario, Canada K2M 1P6
Telephone: (613) 254-9643
Facsimile: (613) 254-8807
Website: www.novatech-eng.com

LOCATION
CITY OF OTTAWA
600 MARCH ROAD - NOKIA PARKING LOT EXPANSION

DRAWING NAME
POST-DEVELOPMENT
STORMWATER MANAGEMENT
PLAN

PROJECT NO: 121334
REV: 3
DRAWING NO: 121334-SWM
PLAN #1907