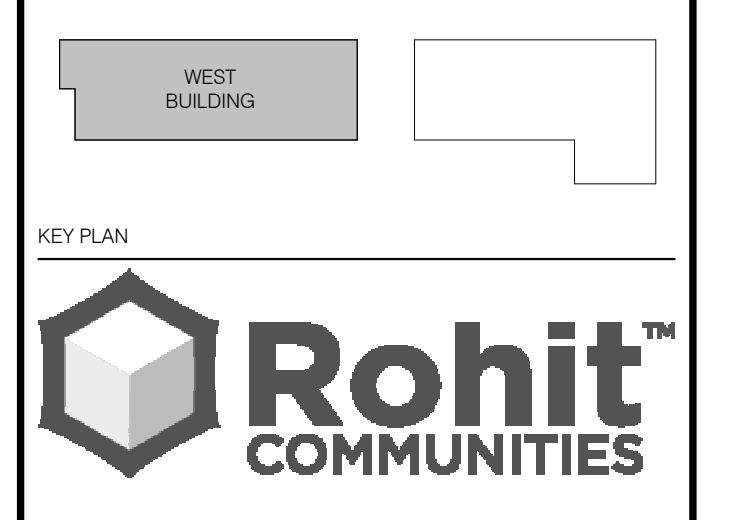




- CLADDING LEGEND:**
- BRICK MASONRY
COLOUR EBONYE SMOOTH
 - FIBRE CEMENT PLANK
COLOUR SUMMER WHEAT
 - FIBRE CEMENT PANEL
COLOUR ARCTIC WHITE
 - FIBRE CEMENT PANEL
COLOUR PEARL GRAY
 - FIBRE CEMENT PANEL
COLOUR NIGHT GRAY
 - ALUMINUM COMPOSITE PANEL
COLOUR SILVER
 - ALUMINUM COMPOSITE PANEL
COLOUR YELLOW
 - ALUMINUM COMPOSITE PANEL
COLOUR TEAL
 - ALUMINUM GLASS SYSTEM
FRAME COLOUR
COLOUR BLACK
- CLADDING LEGEND**

GENERAL ARCHITECTURAL NOTES:

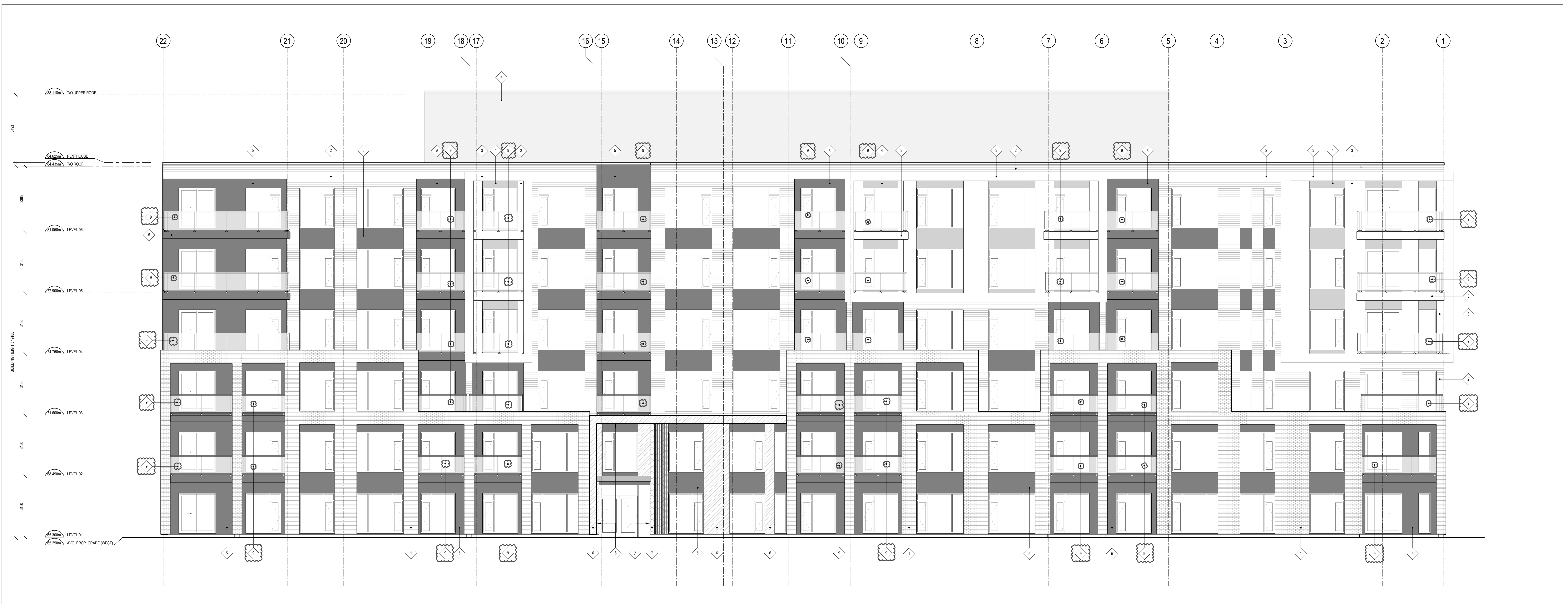
- This drawing is the property of the Architect and may not be reproduced or used without the expressed consent of the Architect.
- Drawings are not to be scaled. The Contractor is responsible for checking and verifying all levels and dimensions and shall report all discrepancies to the Architect and obtain clarification prior to commencing work.
- Upon notice of starting, the Architect will provide unambiguous clarification or supplementary information regarding the intent of the Contract Documents.
- The Architectural Drawings are to be read in conjunction with all other Contract Documents including Project Manuals and the Structural, Mechanical and Electrical Drawings.
- Revisions or changes to the Architectural Drawings, including but not limited to, shall be indicated on the Architectural Drawings. Locations shown on the Architectural Drawings shall govern over Mechanical and Electrical Drawings. Mechanical and Electrical items not clearly located will be located as directed by the Architect.
- These documents are not to be used for construction unless specifically noted for each purpose.



Allison Hamlin
ALLISON HAMLIN
 MANAGER (A) DEVELOPMENT REVIEW WEST
 PLANNING, REAL ESTATE & ECONOMIC DEVELOPMENT
 DEPARTMENT, CITY OF OTTAWA

APPROVED
 By Allison Hamlin at 5:16 pm, Feb 29, 2024

2 WEST BUILDING - SOUTH ELEVATION
 SCALE: 1 : 75



1 WEST BUILDING - NORTH ELEVATION
 SCALE: 1 : 75

ISSUE RECORD

37	RE-ISSUED FOR SITE PLAN CONTROL	24-02-08
36	ISSUED FOR COORDINATION	24-02-02
34	RE-ISSUED FOR SITE PLAN CONTROL	24-01-31
6	ISSUED FOR SITE PLAN CONTROL	22-12-16
4	ISSUED FOR RE-ZONING	22-12-09
3	ISSUED FOR COORDINATION	22-11-16



project1 studio
 Project1 Studio Incorporated
 (613) 884-3009 | info@project1studio.ca

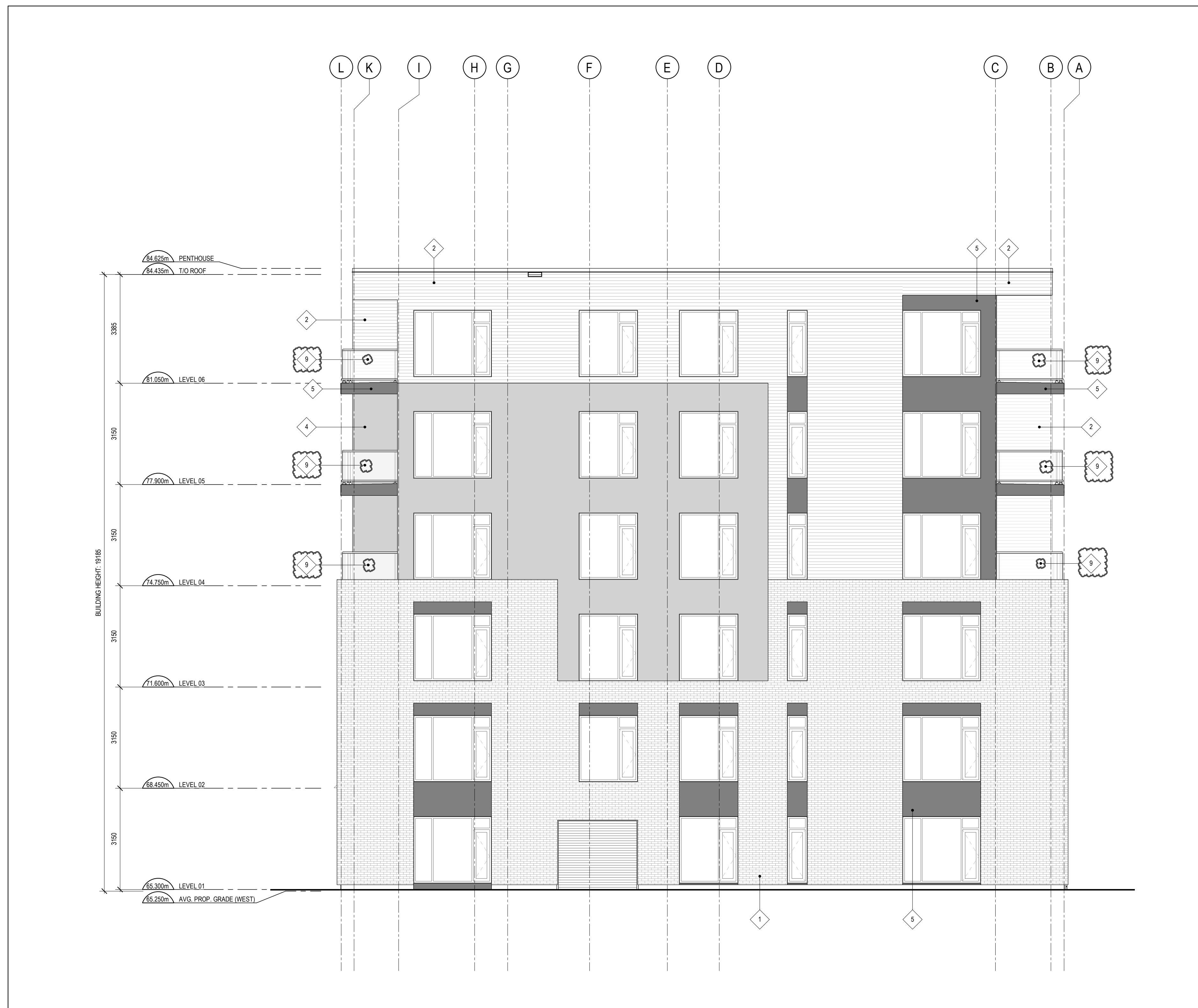
3430 CARLING
 3430 CARLING AVENUE
 OTTAWA, ON

PROJ	SCALE	DRAWN	REVIEWED
2211	NOTED	AR	RMK

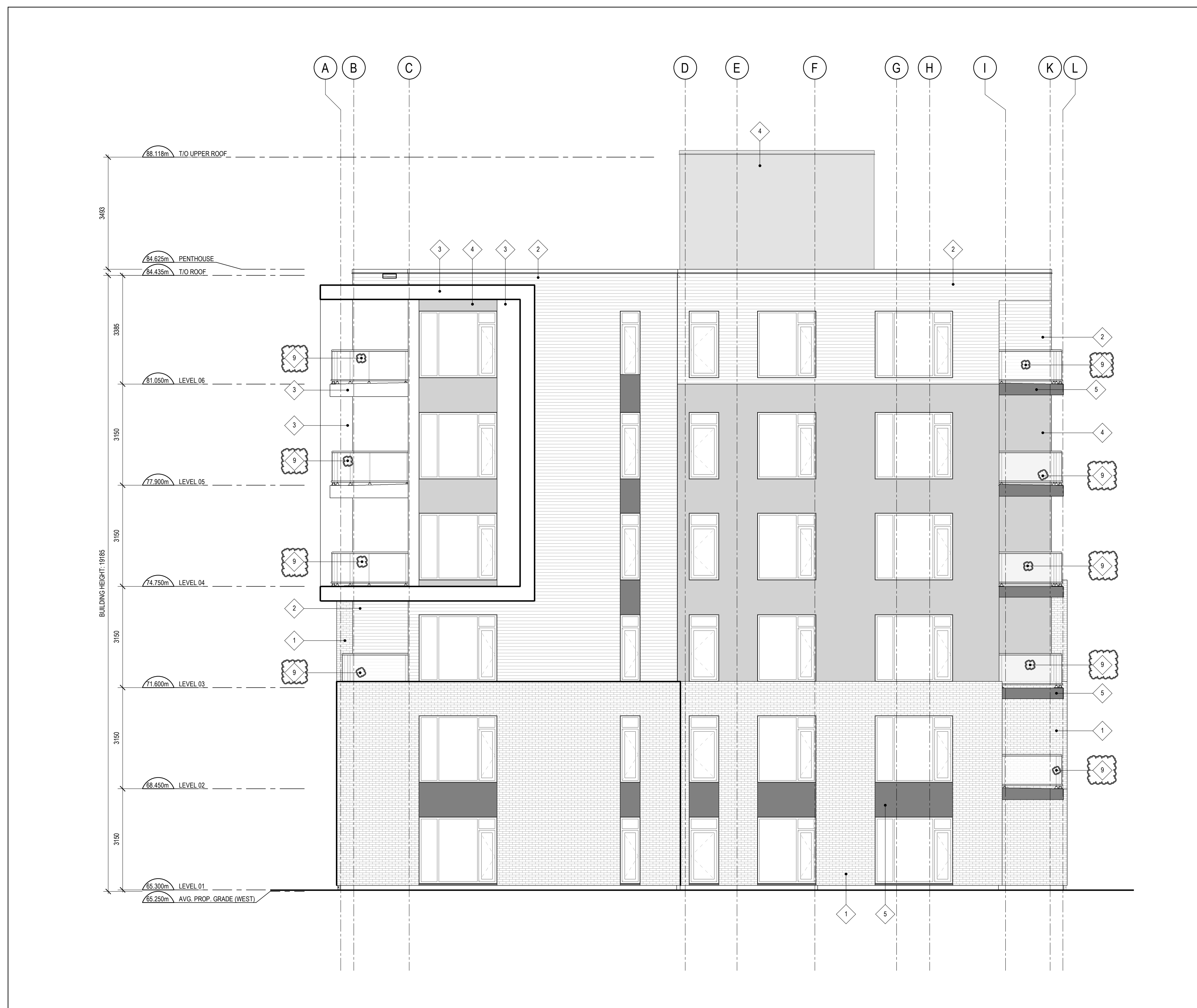
WEST BUILDING - NORTH & SOUTH ELEVATIONS

A200

D07-12-22-0177



1 WEST BUILDING - EAST ELEVATION
SCALE: 1:75



2 WEST BUILDING - WEST ELEVATION
SCALE: 1:75

CLADDING LEGEND:

	BRICK MASONRY COLOUR EBONYE SMOOTH
	FIBRE CEMENT PLANK COLOUR SUMMER WHEAT
	FIBRE CEMENT PANEL COLOUR ARCTIC WHITE
	FIBRE CEMENT PANEL COLOUR PEARL GRAY
	FIBRE CEMENT PANEL COLOUR NIGHT GRAY
	ALUMINUM COMPOSITE PANEL COLOUR SILVER
	ALUMINUM COMPOSITE PANEL COLOUR YELLOW
	ALUMINUM COMPOSITE PANEL COLOUR TEAL
	ALUMINUM GLASS SYSTEM FRAME-GLOSS/WHITE FRAME-GLOSS/BLACK

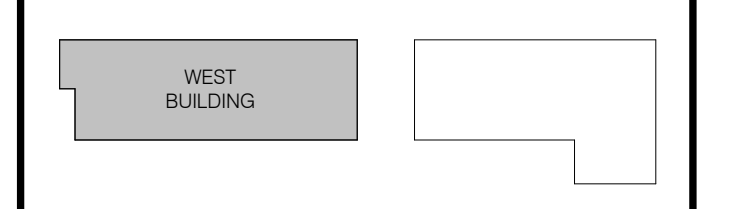
CLADDING LEGEND

Allison Hamlin
ALLISON HAMLIN
MANAGER (A), DEVELOPMENT REVIEW WEST
PLANNING, REAL ESTATE & ECONOMIC DEVELOPMENT
DEPARTMENT, CITY OF OTTAWA

APPROVED
By Allison Hamlin at 5:16 pm, Feb 29, 2024

GENERAL ARCHITECTURAL NOTES:

- This drawing is the property of the Architect and may not be reproduced or used without the expressed consent of the Architect.
- Drawings are not to be scaled. The Contractor is responsible for checking and verifying all levels and dimensions and shall report all discrepancies to the Architect and obtain clarification prior to commencing work.
- Upon notice in writing, the Architect will provide photographic, clarification or supplementary information regarding the intent of the Contract Documents.
- The Architectural Drawings are to be read in conjunction with all other Contract Documents including Project Manuals and the Structural, Mechanical and Electrical Drawings.
- Revisions or changes to the Architectural Drawings, including but not limited to, Mechanical and Electrical Drawings, shall govern over the original drawings. Mechanical and Electrical drawings not clearly located will be located as directed by the Architect.
- These documents are not to be used for construction unless specifically noted for such purpose.



KEY PLAN
Rohit COMMUNITIES

ISSUE RECORD

37	RE-ISSUED FOR SITE PLAN CONTROL	24-02-08
36	ISSUED FOR COORDINATION	24-02-02
34	RE-ISSUED FOR SITE PLAN CONTROL	24-01-31
6	ISSUED FOR SITE PLAN CONTROL	22-12-16
4	ISSUED FOR RE-ZONING	22-12-09
3	ISSUED FOR COORDINATION	22-11-16



project1 studio
Project1 Studio Incorporated
(613) 884-3009 | email@project1studio.ca

3430 CARLING
3430 CARLING AVENUE
OTTAWA, ON

PROJ	SCALE	DRAWN	REVIEWED
2211	NOTED	AR	RMK

WEST BUILDING - EAST & WEST ELEVATIONS

A201

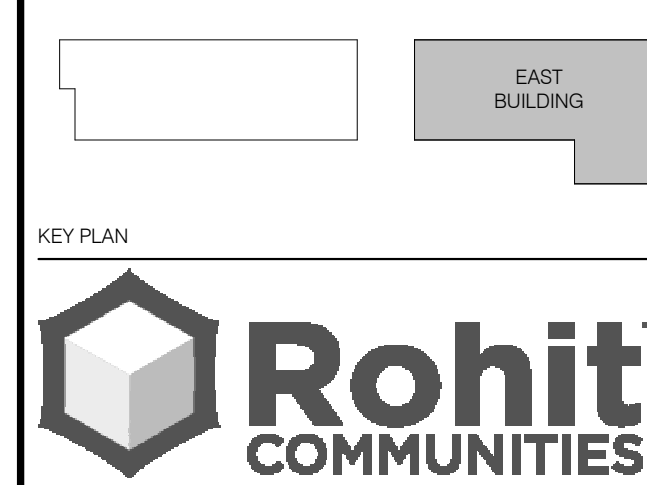
D07-12-22-0177

GENERAL ARCHITECTURAL NOTES:

- This drawing is the property of the Architect and may not be reproduced or used without the expressed consent of the Architect.
- Drawings are not to be scaled. The Contractor is responsible for checking and verifying all levels and dimensions and shall report all discrepancies to the Architect and obtain clarification prior to commencing work.
- Upon notice in writing, the Architect will provide unambiguous clarification or supplementary information regarding the intent of the Contract Documents.
- The Architectural Drawings are to be read in conjunction with all other Contract Documents including Project Manuals and the Structural, Mechanical and Electrical Drawings.
- Revisions approved by the Architect, Mechanical and Electrical Drawings, and others are indicated on the Architectural Drawings. Locations shown on the Architectural Drawings shall govern over Mechanical and Electrical Drawings. Mechanical and Electrical items not clearly located will be located as directed by the Architect.
- These documents are not to be used for construction unless specifically noted for such purposes.

CLADDING LEGEND:

	BRICK MASONRY COLOUR EBONY SMOOTH
	FIBRE CEMENT PLANK COLOUR SUMMER WHEAT
	FIBRE CEMENT PANEL COLOUR MATTE WHITE
	FIBRE CEMENT PANEL COLOUR PEARL GRAY
	FIBRE CEMENT PANEL COLOUR NIGHT GRAY
	ALUMINUM COMPOSITE PANEL COLOUR SILVER
	ALUMINUM COMPOSITE PANEL COLOUR YELLOW
	ALUMINUM COMPOSITE PANEL COLOUR TEAL
	ALUMINUM GLASS SYSTEM FRAME COLOUR COLOUR BLACK



Rohit COMMUNITIES

CLADDING LEGEND

Allison Hamlin

ALLISON HAMLIN
MANAGER (A) DEVELOPMENT REVIEW WEST
PLANNING, REAL ESTATE & ECONOMIC DEVELOPMENT
DEPARTMENT, CITY OF OTTAWA

APPROVED
By Allison Hamlin at 5:17 pm, Feb 29, 2024

ISSUE RECORD

37	RE-ISSUED FOR SITE PLAN CONTROL	24-02-08
35	ISSUED FOR COORDINATION	24-02-02
34	RE-ISSUED FOR SITE PLAN CONTROL	24-01-31
6	ISSUED FOR SITE PLAN CONTROL	22-12-16
4	ISSUED FOR RE-ZONING	22-12-09
3	ISSUED FOR COORDINATION	22-11-16



project1 studio
Project Studio Incorporated
(613) 884-2009 | mail@project1studio.ca

3430 CARLING
3430 CARLING AVENUE
OTTAWA, ON

PROJ	SCALE	DRAWN	REVIEWED
2211	NOTED	AR	RMK

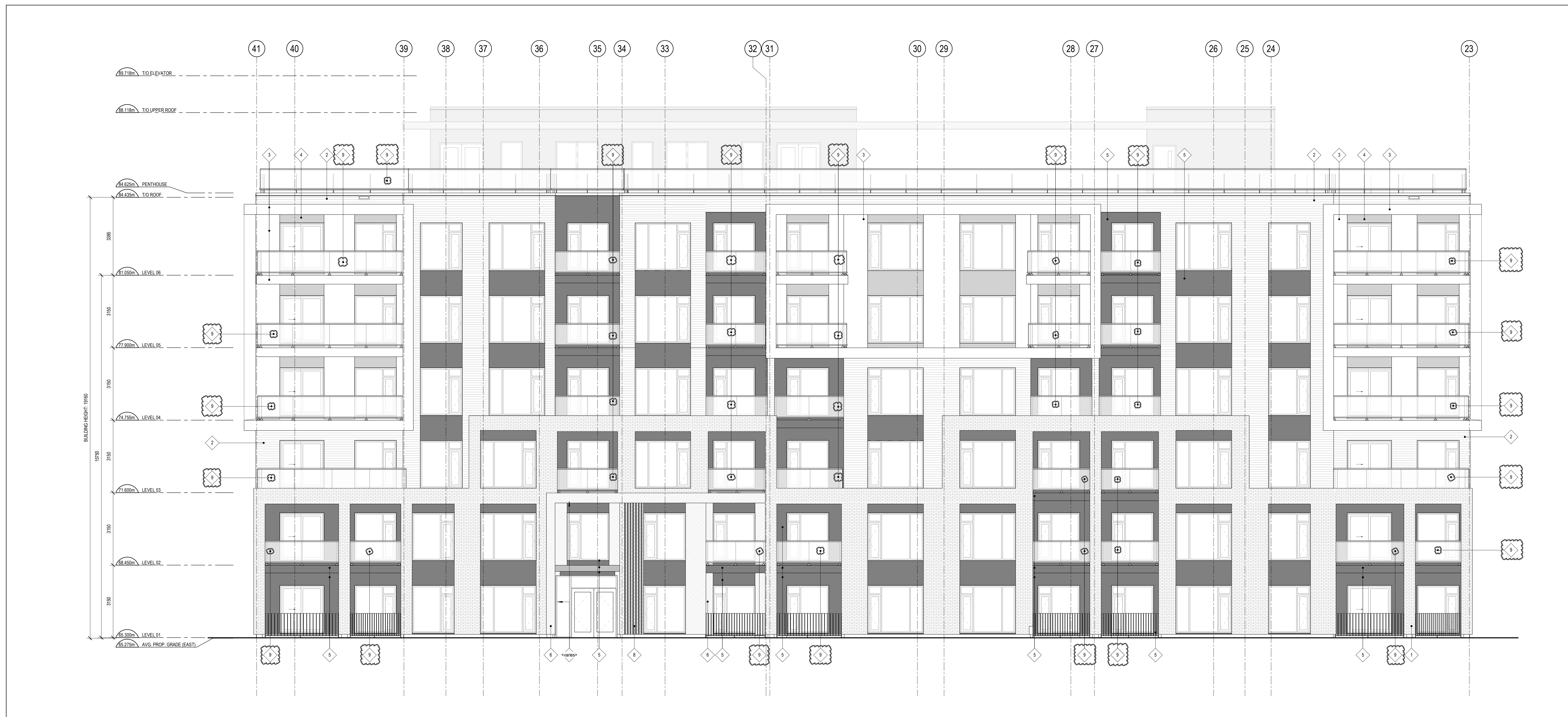
EAST BUILDING - NORTH & SOUTH ELEVATIONS

A202

D07-12-22-0177



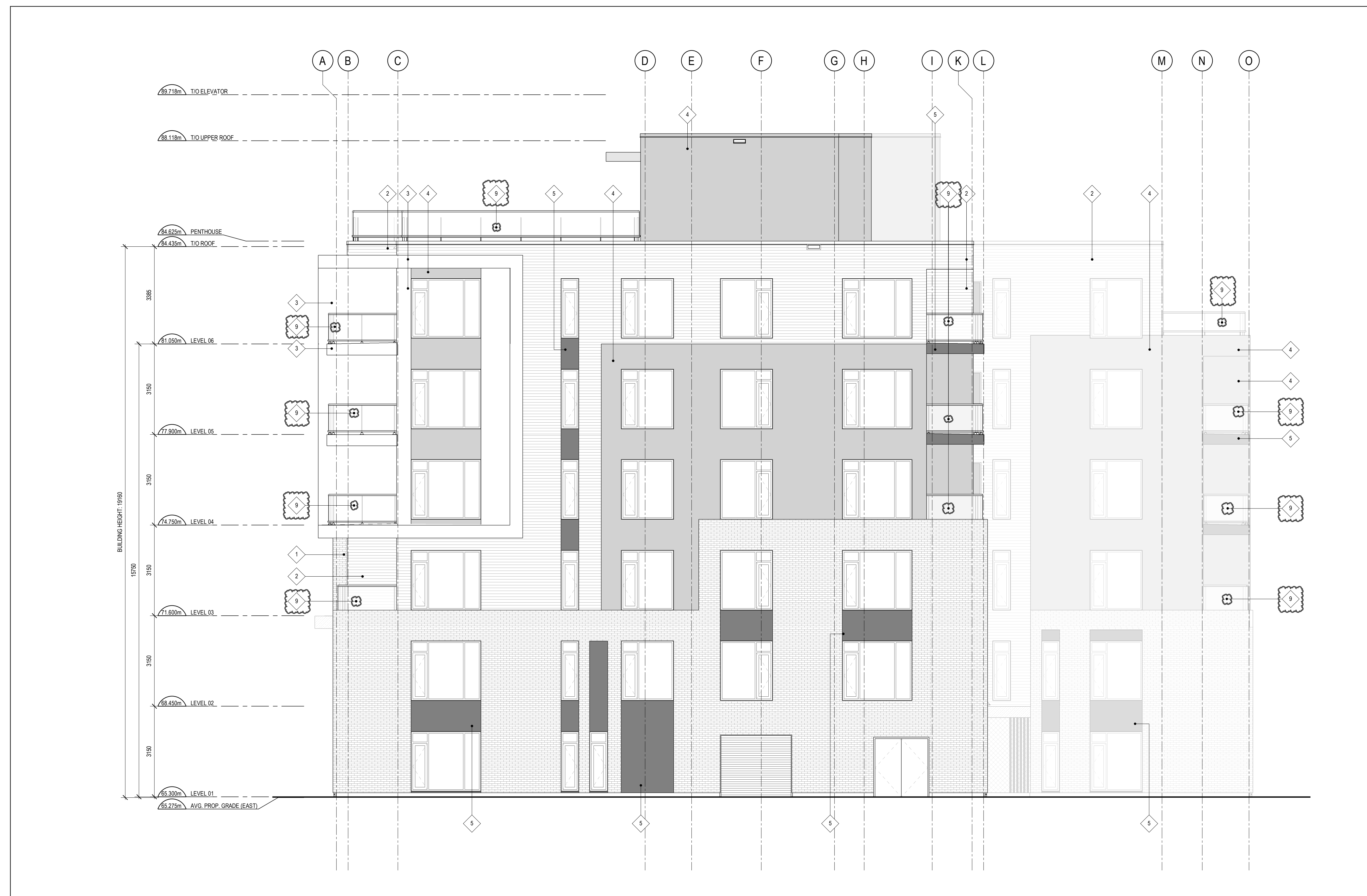
2 EAST BUILDING - SOUTH ELEVATION
SCALE: 1:75



1 EAST BUILDING - NORTH ELEVATION
SCALE: 1:75



1 EAST BUILDING - EAST ELEVATION
SCALE: 1 : 75



2 EAST BUILDING - WEST ELEVATION
SCALE: 1 : 75

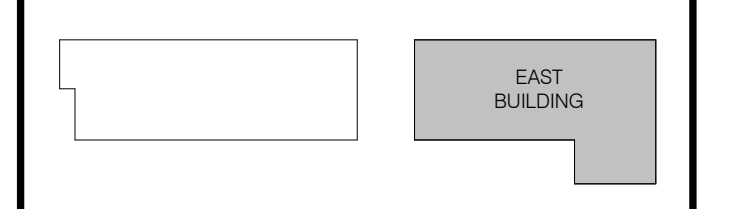
CLADDING LEGEND:

- BRICK MASONRY
COLOUR EBONYE SMOOTH
- FIBRE CEMENT PLANK
COLOUR SUMMER WHEAT
- FIBRE CEMENT PANEL
COLOUR WHITE
- FIBRE CEMENT PANEL
COLOUR PEARL GRAY
- FIBRE CEMENT PANEL
COLOUR NIGHT GRAY
- ALUMINUM COMPOSITE PANEL
COLOUR SILVER
- ALUMINUM COMPOSITE PANEL
COLOUR YELLOW
- ALUMINUM COMPOSITE PANEL
COLOUR TEAL
- ALUMINUM GLASS SYSTEM
FRAME CHASSIS
PANEL CLEAR GLASS

CLADDING LEGEND

GENERAL ARCHITECTURAL NOTES:

- This drawing is the property of the Architect and may not be reproduced or used without the expressed consent of the Architect.
- Drawings are not to be scaled. The Contractor is responsible for checking and verifying all levels and dimensions and shall report all discrepancies to the Architect and obtain clarification prior to commencing work.
- Upon notice in writing, the Architect will provide photographic, clarification or supplementary information regarding the intent of the Contract Documents.
- The Architectural Drawings are to be read in conjunction with all other Contract Documents including Project Manual and the Structural, Mechanical and Electrical Drawings.
- Revisions or changes to the Architectural Drawings, Specifications, Mechanical and Electrical Drawings, Structural Drawings, and other documents shall govern over these documents and shall be located as directed by the Architect.
- These documents are not to be used for construction unless specifically noted for such purpose.



Allison Hamlin
ALLISON HAMLIN
MANAGER (A), DEVELOPMENT REVIEW WEST
PLANNING, REAL ESTATE & ECONOMIC DEVELOPMENT
DEPARTMENT, CITY OF OTTAWA

APPROVED
By Allison Hamlin at 5:17 pm, Feb 29, 2024

ISSUE RECORD

37	RE-ISSUED FOR SITE PLAN CONTROL	24-02-08
36	ISSUED FOR COORDINATION	24-02-02
34	RE-ISSUED FOR SITE PLAN CONTROL	24-01-31
6	ISSUED FOR SITE PLAN CONTROL	22-12-16
4	ISSUED FOR RE-ZONING	22-12-09
3	ISSUED FOR COORDINATION	22-11-16



project1 studio
Project1 Studio Incorporated
(613) 884-3009 | mail@project1studio.ca

3430 CARLING
3430 CARLING AVENUE
OTTAWA, ON

PROJ	SCALE	DRAWN	REVIEWED
2211	NOTED	AR	RMK

EAST BUILDING - EAST & WEST ELEVATIONS

A203

D07-12-22-0177