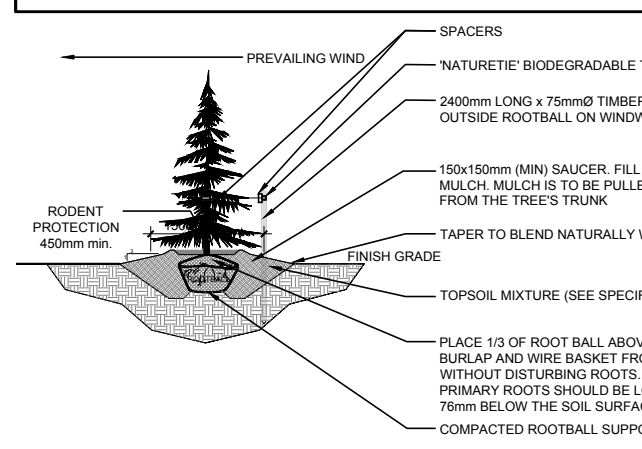
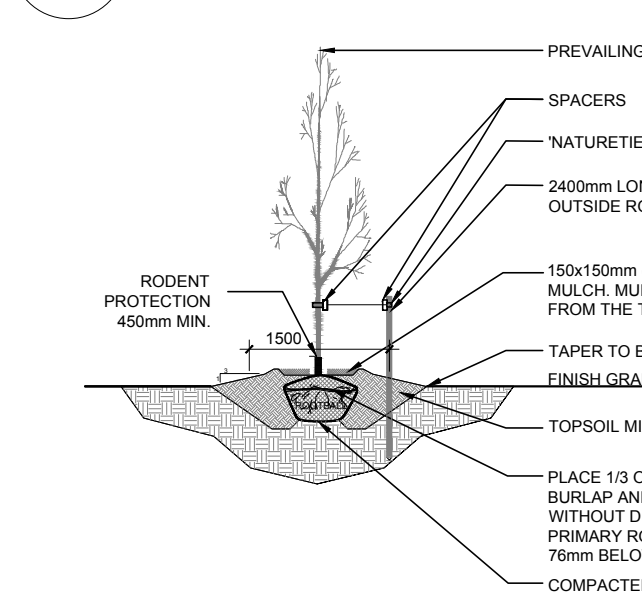


40 YEAR CANOPY CALCULATION:

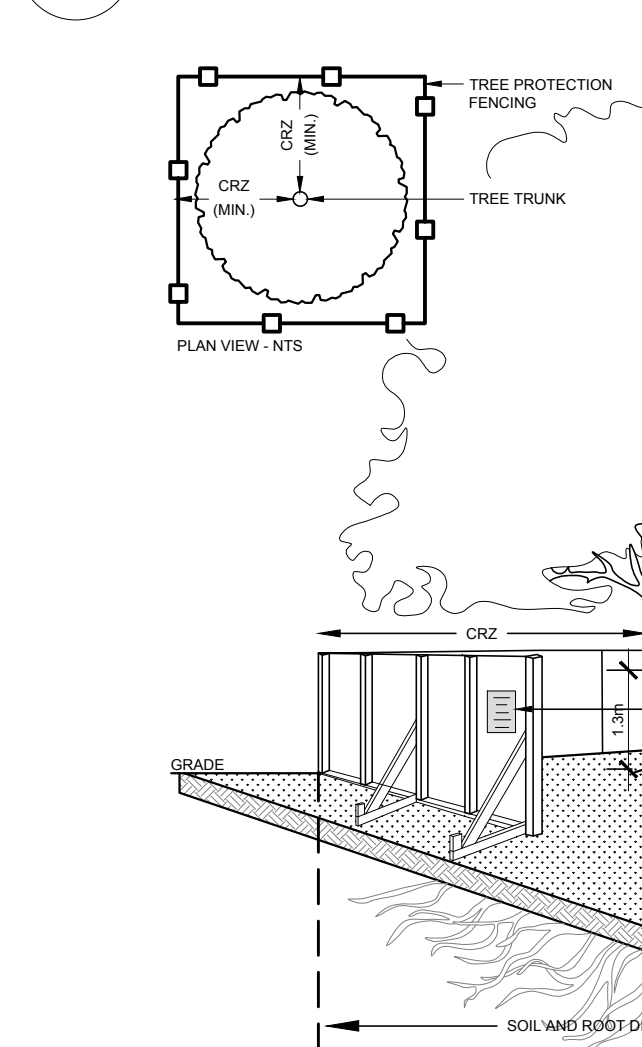
- 17,794 m2 site area
- (39) large trees proposed (154m2 ea.)
- (28) medium trees proposed / transplanted (79m2 ea.)
- (5) small trees proposed / transplanted (7m2 ea.)
- (1) large coniferous tree proposed (79m2 ea.)
- =8,332m2 canopy cover =46.8% canopy cover
- *Large trees calculated at 14m, medium & coniferous at 10m and small at 3m.



2 CONIFEROUS TREE PLANTING SCALE NTS



3 DECIDUOUS TREE PLANTING SCALE NTS

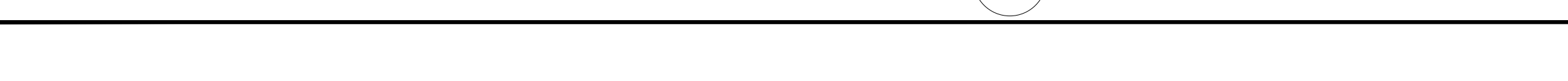


4 TREE PROTECTION FENCE SCALE NTS

EXISTING TREE LIST

| KEY | QTY | BOTANICAL NAME | COMMON NAME | SIZE | CONDITION | REMARKS | OWNERSHIP |
|-----|-----|---------------------------|---------------------|---------------|-----------|-----------------|-----------------|
| AB | 2 | <i>Abies balsamea</i> | Balsam Fir | 200-250mm DBH | GOOD | To remain | 2680 TENTH LINE |
| AN | 3 | <i>Acer negundo</i> | Manitoba Maple | 150-350mm DBH | GOOD | See plan | CITY OF OTTAWA |
| MA | 6 | <i>Maackia amurensis</i> | Amur Maackia | 100mm DBH | GOOD | See plan | CITY OF OTTAWA |
| PC | 10 | <i>Pyrus calleryana</i> | Ornamental Pear | 100mm DBH | GOOD | See plan | CITY OF OTTAWA |
| PD | 1 | <i>Populus deltoides</i> | Eastern Cottonwood | FAIR | To remain | 2680 TENTH LINE | CITY OF OTTAWA |
| PG | 1 | <i>Picea glauca</i> | White Spruce | 250-300mm DBH | GOOD | To remain | 2680 TENTH LINE |
| PG | 2 | <i>Salix spp.</i> | Willow | 2x200mm DBH | GOOD | To be removed | 2686 TENTH LINE |
| TM | 10 | <i>Tilia mongolica</i> | Mongolian Linden | 100mm DBH | GOOD | See plan | CITY OF OTTAWA |
| TO | 5 | <i>Thuja occidentalis</i> | Eastern White Cedar | 150mm DBH | GOOD | To be removed | 2666 TENTH LINE |

5 SHRUB AND ORNAMENTAL GRASS PLANTING SCALE NTS



- ##### TREE PROTECTION REQUIREMENTS:
1. PRIOR TO ANY WORK WITHIN THE CRITICAL ROOT ZONE (CRZ) ± 10% DIAMETER OF A TREE, TREE PROTECTION FENCING MUST BE INSTALLED SURROUNDING THE CRITICAL ROOT ZONE AND REMAIN IN PLACE UNTIL THE WORK IS COMPLETE.
 2. UNLESS PLANS ARE APPROVED BY CITY FORESTRY STAFF, FOR WORK WITHIN THE CRZ: DO NOT PLACE ANY MATERIAL OR EQUIPMENT INCLUDING OUTHOUSES; DO NOT ATACH ANY SIGNS, NOTICES OR POSTERS TO ANY TREE; DO NOT RAISE OR LOWER THE EXISTING GRADE; TUNNELS THAT EXHAUST FUMES FROM ALL EQUIPMENT ARE NOT DIRECTED TOWARD ANY TREE CANOPY; DO NOT EXTEND HARD SURFACE OR SIGNIFICANTLY CHANGE LANDSCAPE.
 3. TREE PROTECTION FENCING MUST BE AT LEAST 1.2m IN HEIGHT AND BE CONSTRUCTED OF RIGID OR FRAMED MATERIALS (E.G. MODULAR STEEL PL/WOOD) HOARDINGS, OR SNOW FENCE ON 2"x4" WOOD FRAMES WITH POSTS 2.4m APART. SUCH THAT THE FENCE LOCATION CANNOT BE ALTERED. ALL SUPPORTS AND BRACKETS MUST BE PLACED OUTSIDE OF THE CRZ AND INSTALLATION MUST MINIMIZE DAMAGE TO EXISTING ROOTS. (SEE DETAIL).
 4. THE LOCATION OF THE TREE PROTECTION FENCING MUST BE DETERMINED BY AN ARBORIST AND DETAILED ON ANY ASSOCIATED PLANNING AND/OR TREE CONSERVATION REPORT, TREE DISCLOSURE REPORT, ETC. THE PLAN AND CONSTRUCTED FENCING MUST BE APPROVED BY CITY FORESTRY STAFF PRIOR TO THE COMMENCEMENT OF WORK.
 5. IF THE FENCED TREE PROTECTION AREA MUST BE REDUCED TO FACILITATE CONSTRUCTION, MITIGATION MEASURES MUST BE PRESCRIBED BY AN ARBORIST AND APPROVED BY CITY FORESTRY STAFF. THESE MAY INCLUDE THE PLACEMENT OF PL/WOOD, WOOD CHIPS OR STEEL PLATING OVER THE ROOTS FOR PROTECTION OR THE PROPER PRUNING AND CARE OF ROOTS WHERE ENCOUNTERED.

BY-LAWS:

ALL CITY OWNED TREES ARE PROTECTED UNDER THE MUNICIPAL TREES AND NATURAL AREAS PROTECTION BY-LAW (2006-279) WITHIN THE URBAN AREA.

PRIVATELY OWNED TREES GREATER THAN 50cm IN DIAMETER ON LOTS 1 HECTARE OR LESS, AND TREES GREATER THAN 100cm IN DIAMETER ON LOTS GREATER THAN 1 HECTARE, ARE PROTECTED UNDER BY-LAW (2006-200).

CRZ = DBH x 10cm
CRZ IS TO BE MEASURED FROM THE OUTSIDE EDGE OF THE TREE BASE

TREE PROTECTION SIGNAGE AS PER CITY STANDARD

1.2m HIGH TREE PROTECTION FENCING AS PER REQUIREMENT #2

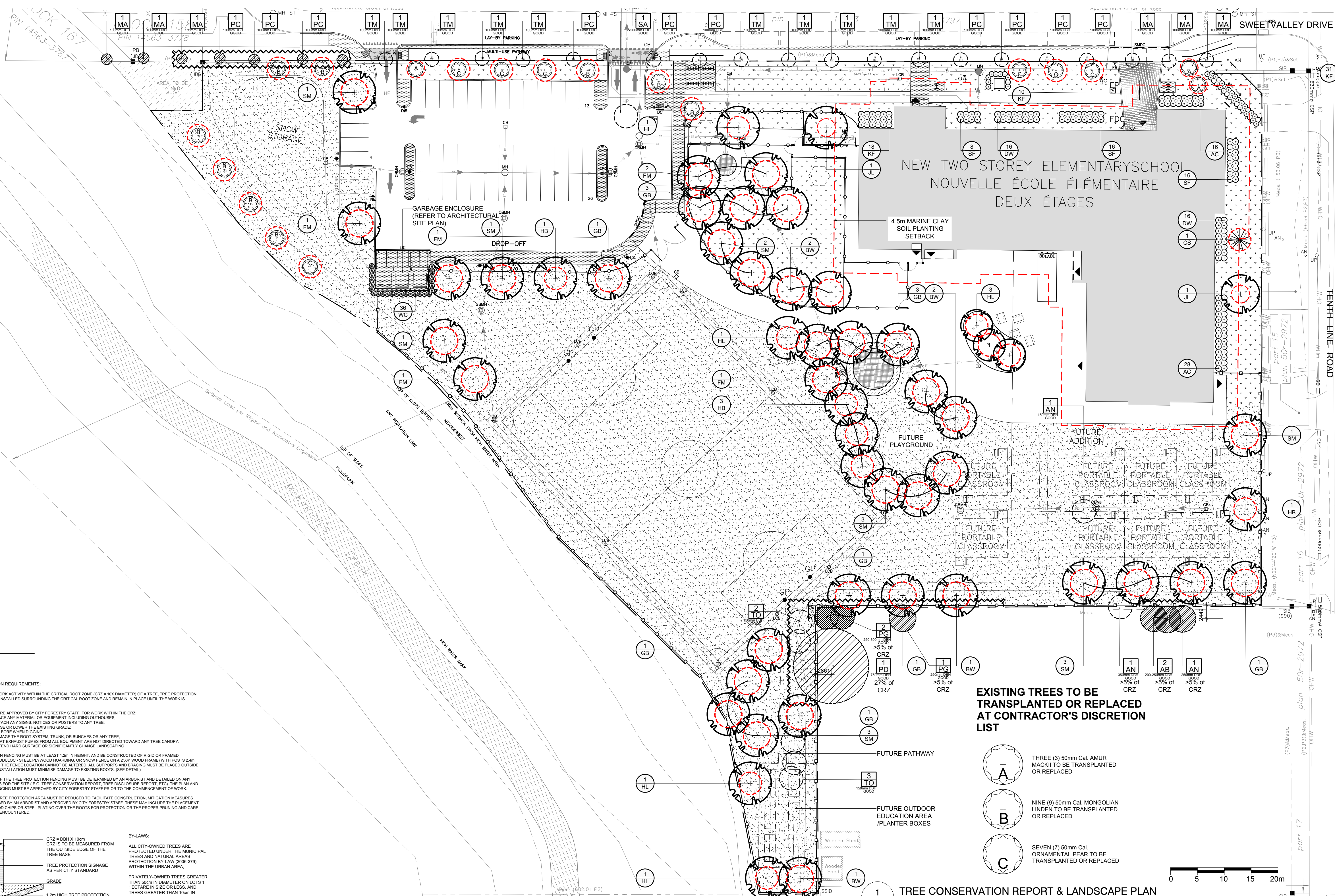
POSTS TO BE SPACED AT 2.4m O.C. MAX. AS PER REQUIREMENT #4

REMOVE DAMAGED OR OBJECTIONABLE BRANCHES FROM POTTED STOCK OR CUT AND REMOVE BURLAP AND WIRE FROM TOP 1/3 OF ROOTBALL

PLANTING BED AROUND SHRUBS COVER ENTIRE BED WITH DOWN GRENTH WOODCHIP MULCH. PULL BACK MULCH FROM BASE OF SHRUBS. ENSURE THAT MULCH COVERS ALL EXPOSED SOIL.

TAPER TO BLEND NATURALLY WITH FINISHED GRADE.

TOPSOIL MIXTURE AS PER SPECIFICATIONS.



EXISTING TREES TO BE TRANSPLANTED OR REPLACED AT CONTRACTOR'S DISCRETION LIST

- THREE (3) 50mm Cal. AMUR MACKI TO BE TRANSPLANTED OR REPLACED
- NINE (9) 50mm Cal. MONGOLIAN LINDEN TO BE TRANSPLANTED OR REPLACED
- SEVEN (7) 50mm Cal. ORNAMENTAL PEAR TO BE TRANSPLANTED OR REPLACED

TREE CONSERVATION REPORT & LANDSCAPE PLAN SCALE 1:400

PROPOSED PLANT LIST

| KEY | QTY | BOTANICAL NAME | COMMON NAME | SIZE | CONDITION | REMARKS |
|---------------------------|-----|--------------------------------------|------------------------|------------|-----------|---------------|
| TREES | | | | | | |
| BW | 6 | <i>Tilia americana</i> | Basswood | 60mm cal. | B&B | |
| CS | 1 | <i>Picea pungens</i> | Colorado Spruce | 1800mm ht. | B&B | |
| FM | 6 | <i>Acer x freemanii</i> | Freeman's Maple | 60mm cal. | B&B | |
| GB | 12 | <i>Ginkgo biloba</i> | Maidenhair Tree | 60mm cal. | B&B | Male tree |
| HB | 5 | <i>Celtis occidentalis</i> | Hackberry | 60mm cal. | B&B | |
| HL | 7 | <i>Gleditsia triacanthos</i> | Shademoor Honey Locust | 60mm cal. | B&B | Single leader |
| JL | 2 | <i>Syringa reticulata</i> | Japanese Tree Lilac | 60mm cal. | B&B | |
| SM | 15 | <i>Acer saccharum</i> | Sugar Maple | 60mm cal. | B&B | |
| SHRUBS | | | | | | |
| AC | 44 | <i>Ribes alpinum</i> | Alpine Currant | 800 mm ht. | Potted | 1200 mm o.c. |
| DW | 32 | <i>Cornus sericea</i> | Red Osier Dogwood | 800 mm ht. | Potted | 1200 mm o.c. |
| SF | 40 | <i>Sorbaria sorbifolia</i> | Sem False Spirea | 600mm ht. | B&B | 1000 mm o.c. |
| WC | 36 | <i>Thuja occidentalis</i> | 'Clumps' | 2000mm ht. | Potted | 600 mm o.c. |
| ORNAMENTAL GRASSES | | | | | | |
| KF | 59 | <i>Calamagrostis 'Karl Foerster'</i> | Karl Foerster Grass | 250mm pot | Potted | 800 mm o.c. |

NOTE: ALL PROPOSED PLANTING IS ON PRIVATE PROPERTY

CLIENT
CONSEIL DES ÉCOLES CATHOLIQUES DU CENTRE-EST
 Le meilleur conseil qu'on puisse vous donner

CONSULTANTS
 ARCHITECTS: **EDWARD J. CUHACI & ASSOCIATES ARCHITECTS INC.**
 111 Queen St. Suite 100, Ottawa, Ontario, K1P 5B7
 Tel: (613) 236-1544 Telephone: (613) 236-7135 Email: info@ejca.com

CIVIL ENGINEERS:
wsp
 T: 1-613-690-3786 M: 1-613-298-5960
 2811 Queensview Drive, Suite 300, Ottawa, Ontario, K2B 8K2 Canada

LEGEND

- PROPOSED PAVERS
- PROPOSED SOD
- PROPOSED SEEDED GRASS AREA
- PROPOSED ENGINEERED WOOD FIBER
- PROPOSED ASPHALT (REGULAR / HEAVY DUTY)
- EXISTING TREE TO REMAIN
- EXISTING TREE TO BE REMOVED
- REQUIRED SOIL VOLUME PROPOSED DECIDUOUS TREE
- REQUIRED SOIL VOLUME EXISTING TREE TO BE TRANSPLANTED OR REPLACED AT CONTRACTOR'S DISCRETION
- PROPOSED CONIFEROUS TREE
- PROPOSED SHRUBS / ORNAMENTAL GRASSES
- PROPOSED 1.5m HI CHAINLINK FENCE
- PROPOSED TREE PROTECTION FENCE

- #### GENERAL NOTES:
1. IT IS THE RESPONSIBILITY OF THE APPROPRIATE CONTRACTOR OR OFFICIAL TO REPORT ANY ERRORS, OMISSIONS OR DISCREPANCIES ON THIS PLAN WITH ACTUAL SITE CONDITIONS TO THE LANDSCAPE ARCHITECT BEFORE PROCEEDING WITH CONSTRUCTION.
 2. THE CONTRACTOR IS TO NOTIFY ALL UTILITY COMPANIES AND AUTHORITIES PRIOR TO ANY EXCAVATION AND ASCERTAIN LOCATIONS OF UNDERGROUND SERVICES.
 3. THE CONTRACTOR IS TO REINSTATE ALL AREAS AND ITEMS DAMAGED AS A RESULT OF CONSTRUCTION ACTIVITY.
 4. THE CONTRACTOR IS TO COMPLY WITH ALL PERTINENT CODES AND BY-LAWS.
 5. THE CONTRACTOR IS TO MAINTAIN A POSITIVE SURFACE RUN-OFF THROUGHOUT THE ENTIRE CONSTRUCTION PERIOD.
 6. THE LANDSCAPE ARCHITECT IS NOT RESPONSIBLE FOR SUBSURFACE CONDITIONS.
 7. THE CONTRACTOR IS TO IDENTIFY ALL EXISTING TREES TO REMAIN ON SITE WITH THE LANDSCAPE ARCHITECT PRIOR TO CONSTRUCTION.
 8. THE CONTRACTOR IS TO STAKE THE PROPOSED LOCATION OF ALL PLANT MATERIAL IN CONJUNCTION WITH THE LANDSCAPE ARCHITECT PRIOR TO EXCAVATION.
 9. MINIMUM DISTANCES FOR SELECTED DECIDUOUS TREES ARE AS FOLLOWS:
 - 9.1. BUILDING FOUNDATIONS - 7.5M
 - 9.2. SIDEWALKS - 1.5M
 - 9.3. PUBLIC STREETS - 2.5M
 - 9.4. UNDERGROUND INFRASTRUCTURE - 2.0M
 10. ALL TREES WITHIN 1M OF UNDERGROUND UTILITY TRENCHES ARE TO BE EXCAVATED BY HAND.
 11. REMOVE ALL PROTECTIVE WRAPPING FROM TREE TRUNKS AFTER INSTALLATION.
 12. STAKING OF TREES SHALL ONLY BE PERFORMED IF NECESSARY.
 13. ENSURE THAT MULCH IS PULLED BACK A MINIMUM DISTANCE OF 75MM FROM BASE OF TREE TRUNK.
 14. TREE REMOVAL IS NOT TO TAKE PLACE BETWEEN APRIL 15TH AND AUGUST 15TH DURING BIRD NESTING SEASON.

JAMES B. LENNOX & ASSOCIATES INC.
 LANDSCAPE ARCHITECTS
 3332 CARLING AVE. OTTAWA, ONTARIO K2H 5A5
 Tel: (613) 732-5168 Fax: (613) 732-5168

PROJECT
AVALON III ELEMENTARY SCHOOL

DRAWING
TREE CONSERVATION REPORT AND LANDSCAPE PLAN

STAMP

SCALE
 AS SHOWN

START DATE
 MAY, 2023

PROJECT NO.
 23EJC2351

PROJECT NORTH

DRAWING NO.
L.1

PLOT SIZE ARCH-D