

DRAWING NOTES

- 1 BLUE TINED THERMAL UNITS
- 2 SOLER CROWNALL SYSTEM C/W SOLAR SHADDE THERMAL UNITS
- 3 PAI PANELS, SLATE METALL. FINISH, TYPICAL
- 4 PREFINISHED REBOD METAL SINK, DARK GREY
- 5 SPONGROCK ENTRANCE AND VENTILATE PROGRAM WOOD GRAB PANELS
- 6 CONTINUOUS LED STRIP LIGHTING AROUND PERIMETER
- 7 SHOP WINDOWS, CLEAR THERMAL UNITS C/W BUT SLIDING JOINTS
- 8 ALL ALUMINIUM FINISHES AND O/H DOORS TO BE CLEAR ANODIZED FINISH, TYPICAL
- 9 PAINTED STEEL DOORS TO BE DARK GREY TO MATCH SINK
- 10 WOOD WORKING AS PER VOLVO SIGN PROGRAM
- 11 DEALERSHIP NAME SIGN AS PER VOLVO SIGN PROGRAM
- 12 SERVICE SIGN AS PER SIGN PROGRAM

NOTES

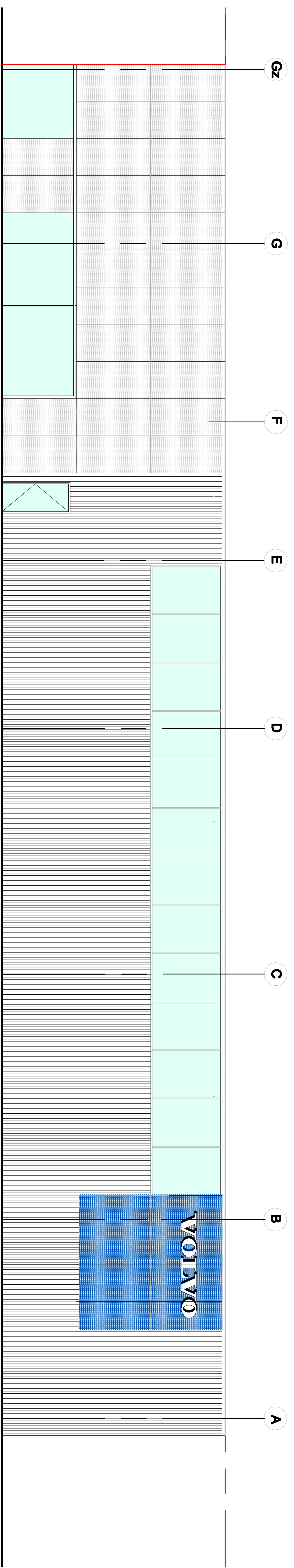
It is the responsibility of the appropriate contractor to check and verify all dimensions on site and report all errors and/or omissions to the architect. All references to codes and by-laws. Do not scale drawings. This drawing may not be used for construction until signed by the Architect. Copyright reserved.

LOCATION MAP



LEGAL DESCRIPTION

PART OF LOTS 17 AND 18
REGISTERED PLAN 23
CITY OF OTTAWA



SOUTH ELEVATION (PARISIEN)

Lucy Ramirez
LUCY RAMIREZ
PLANNER
PLANNING, INFRASTRUCTURE & ECONOMIC
DEVELOPMENT DEPARTMENT, CITY OF OTTAWA

APPROVED
By Lucy Ramirez at 12:55 pm, Feb 22, 2024

no.	date	revision
4	20 JUN 2023	ISSUED FOR REVIEW
3	28 JUL 2022	ISSUED FOR REVIEW
2	26 MAY 2022	ISSUED FOR REVIEW
1	12 OCT 2021	ISSUED FOR REVIEW

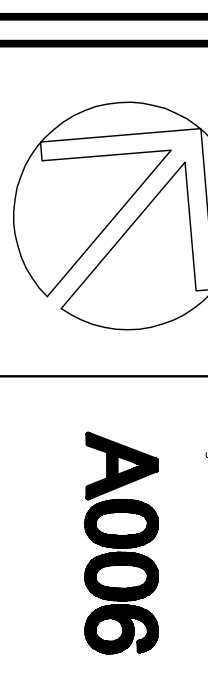
Stamp:
brian k. clark
A.R.C.H.I.T.E.C.T

141 Catherine Street, Suite 102
Ottawa, Ontario K2S 1G3
TEL: (613) 236-7412 • FAX: 236-1799
Email: MichaelChilde@arclha.com

Project:
VOLVO ST. LAURENT
1300 MICHAEL STREET
OTTAWA, ONTARIO

OTTAWA ONTARIO
Drawing:
SOUTH ELEVATION

Project No: 1811
Drawn By: DC
Scale: 1 : 75
North Arrow:
Date: 12-OCT-2021
Drawing No: A006



1 SOUTH ELEVATION
SCALE: 1:75
A006