

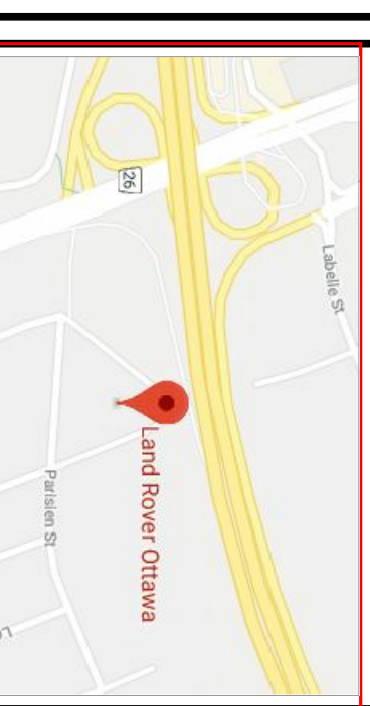
**DRAWING NOTES**

- 1 BLUE TINED THERMAL UNITS
- 2 SOLERA CURTAINWALL SYSTEM C/W SOLA SHADDE THERMAL UNITS
- 3 HAZI PANELS, SILVER METALLIC FINISH, TYPICAL
- 4 PREFINISHED RIBBED METAL SINK, DARK GREY
- 5 SPONGROCK ENTRANCE AND VENTILATE PROGRAM WOOD GRAY PANELS
- 6 CONTINUOUS LED STRIP LIGHTING AROUND PERIMETER
- 7 SHOP WINDOWS, CLEAR THERMAL UNITS C/W BUT SLOTTED JOINTS
- 8 ALL ALUMINIUM ENTRANCES AND O/H DOORS TO BE CLEAR ANODIZED FINISH, TYPICAL
- 9 PAINTED STEEL DOORS TO BE DARK GREY TO MATCH SINK
- 10 WOOD WORKING AS PER WOLO SPM PROGRAM
- 11 KEYSHIPER WAVE SINK AS PER WOLO SPM PROGRAM
- 12 SERVICE SIGN AS PER SPM PROGRAM

**NOTES**

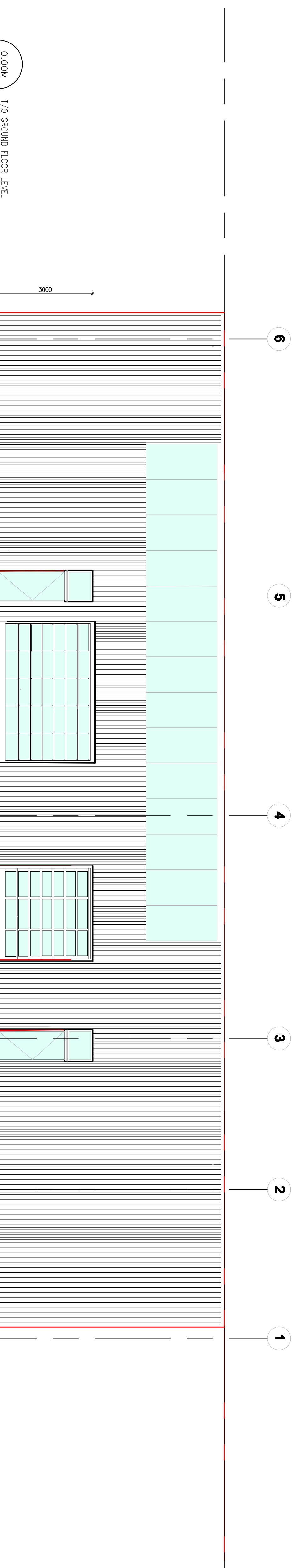
It is the responsibility of the appropriate contractor to check and verify all dimensions on site and report all errors and/or omissions to the architect. All references to codes and by-laws, Do not scale drawings. This drawing may not be used for construction until signed by the Architect. Copyright reserved.

**LOCATION MAP**



**LEGAL DESCRIPTION**

PART OF LOTS 17 AND 18  
REGISTERED PLAN 23  
CITY OF OTTAWA



**EAST ELEVATION (MICHAEL ST.)**

*Lucy Ramirez*  
LUCY RAMIREZ  
PLANNER  
PLANNING, INFRASTRUCTURE & ECONOMIC  
DEVELOPMENT DEPARTMENT, CITY OF OTTAWA

**APPROVED**  
By Lucy Ramirez at 12:52 pm, Feb 22, 2024

**1 EAST ELEVATION**  
A007 SCALE: 1:75

no.	date	revision
4	20 JUL 2023	ISSUED FOR REVIEW
3	26 JUL 2022	ISSUED FOR REVIEW
2	26 MAY 2022	ISSUED FOR REVIEW
1	12 OCT 2021	ISSUED FOR REVIEW

**brian k. clark**  
**A.R.C.H.I.T.E.C.T**  
141 Catherine Street, Suite 102  
Ottawa, Ontario K2S 1G3  
TEL: (613) 238-7412 • FAX: 238-1799  
Email: [Michaelchloed@arclha.com](mailto:Michaelchloed@arclha.com)

**VOLVO ST. LAURENT**  
**1300 MICHAEL STREET**  
**OTTAWA, ONTARIO**

**EAST ELEVATION**

Project No: **1811** Drawn By: **DC** Scale: **1 : 75**  
North Arrow: Date: **12-OCT-2021**  
Drawing No: **A007**

