

PAVEMENT DESIGN
 40mm SUPERPAVE 12.5 ASPHALTIC CONCRETE
 50mm SUPERPAVE 13.0 ASPHALTIC CONCRETE
 150mm OPSS GRANULAR A CRUSHED STONE
 450mm OPSS GRANULAR B TYPE II

ANY DISTURBED AREA DURING CONSTRUCTION TO BE RESTORED TO THE ORIGINAL CONDITION OR BETTER TO THE SATISFACTION OF THE AUTHORITIES HAVING JURISDICTION

CONTRACTOR TO VERIFY THE PRECISE LOCATIONS AND INVERT ELEVATIONS OF EX. UNDERGROUND SERVICES AND EX. UTILITIES PRIOR TO STARTING CONSTRUCTION

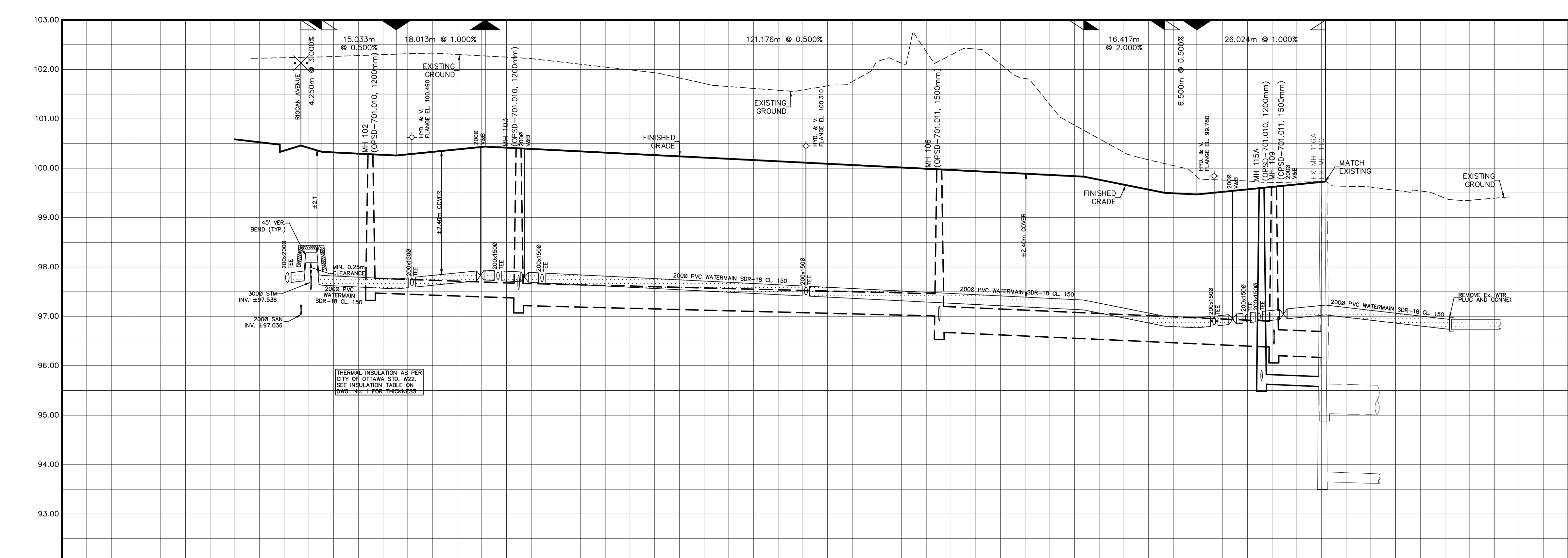
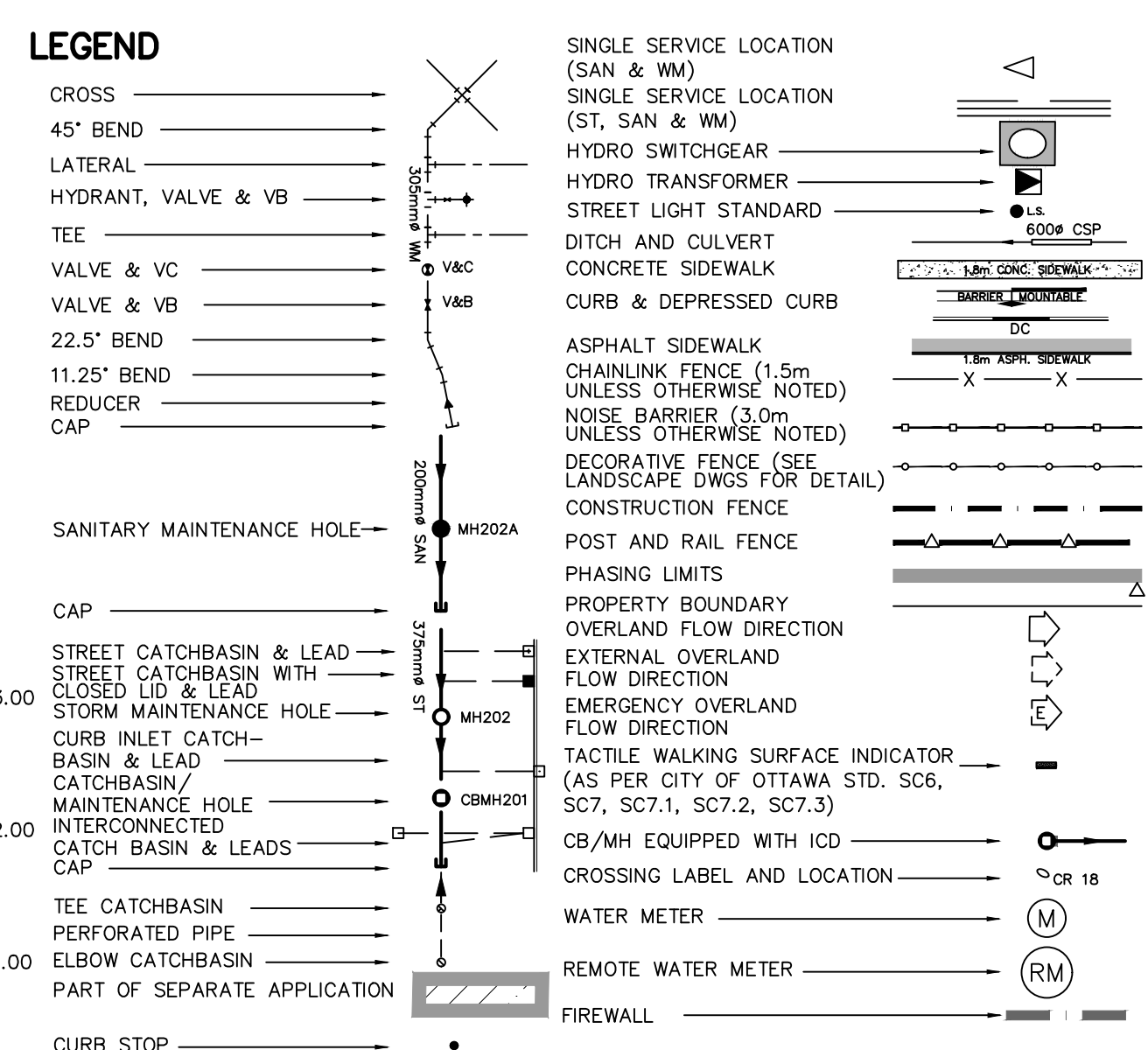
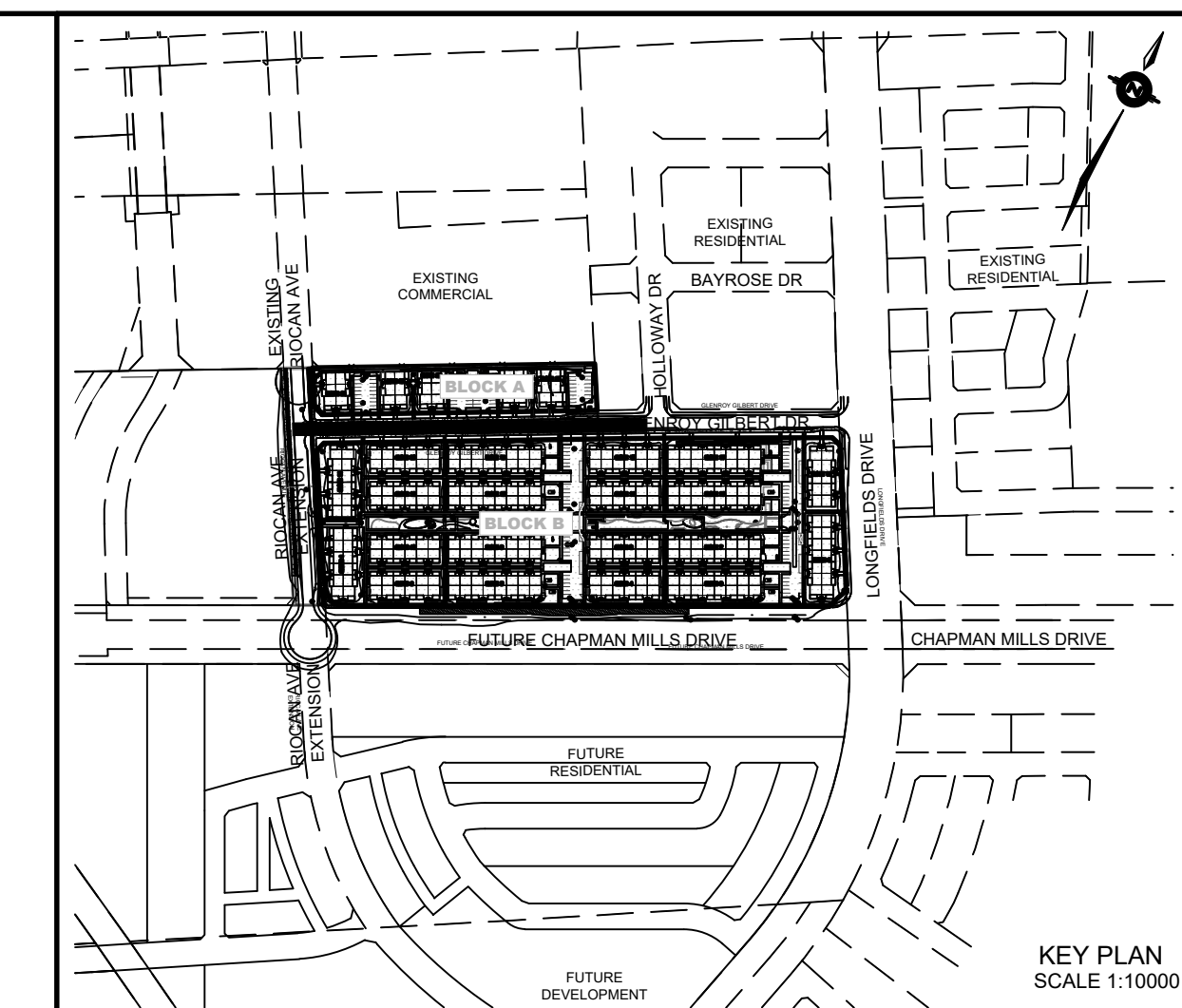
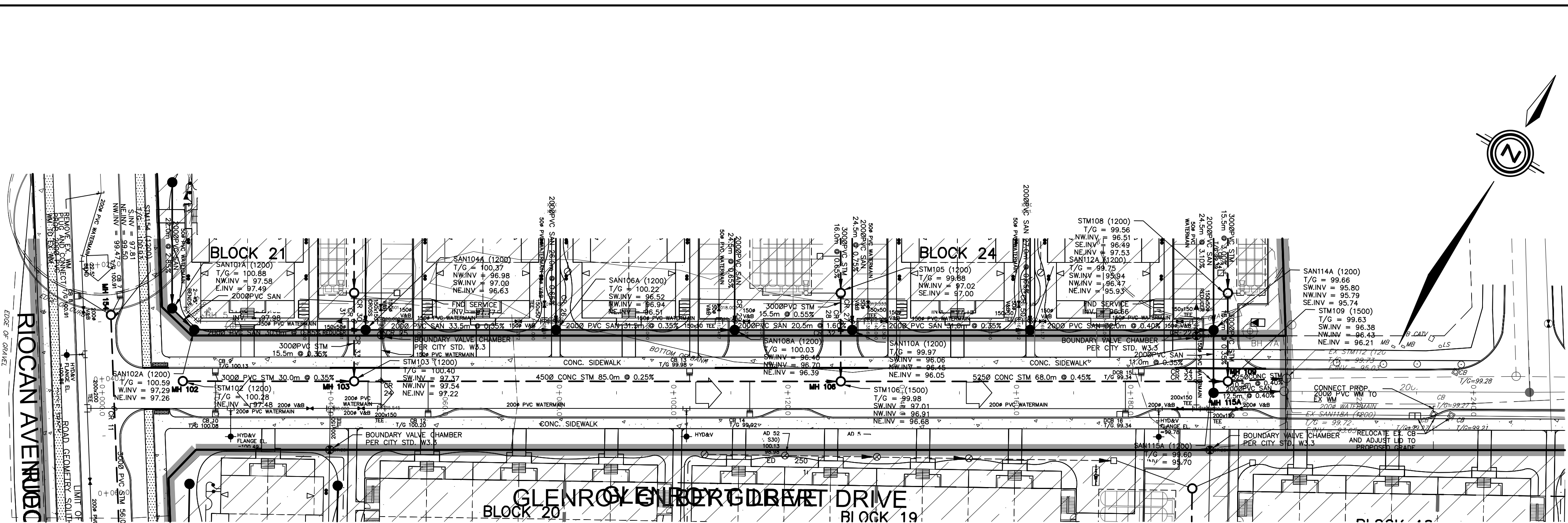
NOTE:
 ALL EXISTING TREES, SHRUBS ETC. WITHIN LOTS, BLOCKS AND ROADS TO BE REMOVED, UNLESS OTHERWISE NOTED

PERMISSION REQUIRED FOR WORK ON ADJACENT LANDS

NOTE: CATCHBASIN DATA
 FOR CATCHBASIN DATA, REFER TO DRAWING No. 3 FOR DETAIL.

NOTE:
 FOR WATERMAIN STUBS, 2.4m MIN. COVER TO BE PROVIDED.

NOTE-RE: TEST PIT/BOREHOLE EXCAVATIONS
 ANY DISTURBED MATERIAL ENCOUNTERED BELOW THE SUBGRADE LEVEL WITHIN A BUILDING FOOTPRINT TO BE SUB-EXCAVATED AND BACKFILLED WITH COMPACTED ENGINEERED FILL AS PER GEOTECHNICAL ENGINEERS RECOMMENDATION.



STATION	TOP OF WATERMAIN	SANITARY INVERT	STORM INVERT	PROPOSED GRADES	CENTERLINE CHAINAGE
0+000.000	97.865			100.459	0+000.000
0+005.000	98.288			100.331	0+005.000
0+010.000	97.831			100.284	0+010.000
0+015.000	97.816			100.284	0+015.000
0+020.000	97.724			100.284	0+020.000
0+025.000	97.756			100.284	0+025.000
0+030.000	97.724			100.336	0+030.000
0+035.000	97.724			100.423	0+035.000
0+040.000	97.724			100.404	0+040.000
0+045.000	97.724			100.404	0+045.000
0+050.000	97.724			100.404	0+050.000
0+055.000	97.724			100.404	0+055.000
0+060.000	97.823			100.323	0+060.000
0+065.000	97.723			100.223	0+065.000
0+070.000	97.723			100.223	0+070.000
0+075.000	97.723			100.223	0+075.000
0+080.000	97.723			100.223	0+080.000
0+085.000	97.723			100.223	0+085.000
0+090.000	97.723			100.223	0+090.000
0+095.000	97.723			100.223	0+095.000
0+100.000	97.723			100.223	0+100.000
0+105.000	97.723			100.223	0+105.000
0+110.000	97.723			100.223	0+110.000
0+115.000	97.723			100.223	0+115.000
0+120.000	97.723			100.223	0+120.000
0+125.000	97.723			100.223	0+125.000
0+130.000	97.723			100.223	0+130.000
0+135.000	97.723			100.223	0+135.000
0+140.000	97.723			100.223	0+140.000
0+145.000	97.723			100.223	0+145.000
0+150.000	97.723			100.223	0+150.000
0+155.000	97.723			100.223	0+155.000
0+160.000	97.723			100.223	0+160.000
0+165.000	97.723			100.223	0+165.000
0+170.000	97.723			100.223	0+170.000
0+175.000	97.723			100.223	0+175.000
0+180.000	97.723			100.223	0+180.000
0+185.000	97.723			100.223	0+185.000
0+190.000	97.723			100.223	0+190.000
0+195.000	97.723			100.223	0+195.000
0+200.000	97.723			100.223	0+200.000
0+205.000	97.723			100.223	0+205.000
0+210.000	97.723			100.223	0+210.000
0+215.000	97.723			100.223	0+215.000
0+220.000	97.723			100.223	0+220.000
0+225.000	97.723			100.223	0+225.000
0+230.000	97.723			100.223	0+230.000
0+235.000	97.723			100.223	0+235.000
0+240.000	97.723			100.223	0+240.000

NOT FOR CONSTRUCTION

No.	BY	DATE	DESCRIPTION
7	S.L.M.	24-02-09	SUBMISSION 5
6	S.L.M.	23-10-06	ISSUED FOR TENDER
5	S.L.M.	23-09-22	ISSUED FOR TENDER
4	S.L.M.	23-09-06	ISSUED FOR TENDER

TOPOGRAPHIC INFORMATION
 TOPOGRAPHIC INFORMATION PROVIDED BY STANTEC GEOMATICS LTD., PROJECT No. 161614291-111, DATED MARCH 1, 2022

SITE PLAN INFORMATION
 SITE PLAN PROVIDED BY SRN ARCHITECTS LTD., PROJECT No. S21001, DATED OCTOBER 5, 2023

LEGAL INFORMATION
 CALCULATED DRAFT PLAN PROVIDED BY STANTEC GEOMATICS LTD., PROJECT No. 161614291-131, DATED AUGUST 9, 2023

BENCH MARK
 ELEVATIONS ARE REFERRED TO THE CANADIAN GEODETIC VERTICAL DATUM (CGVD-1928:1978) AND ARE DERIVED FROM BENCHMARK MONUMENT No. 196530071*, HAVING A PUBLISHED ELEVATION OF 99.742 METRES

MINTO COMMUNITIES INC.

BARRHAVEN TOWN CENTRE
 GLENROY GILBERT DRIVE RIOCAN AVENUE & CHAPMAN MILLS DRIVE EXTENSION

120 Ier Road Unit 103
 Stittsville, Ontario, K2S 1E9
 Tel. (613) 836-0856
 Fax. (613) 836-7183
 www.DSEL.ca

Ottawa

110 Laurier Ave W
 Ottawa, Ontario, K1P 1J1
 Tel. (613) 580-2400
 www.Ottawa.ca

PLAN AND PROFILE OF
GLENROY GILBERT DRIVE
 (STA 0+000.000 TO STA 0+240.000)

© DSEL

DRAWN BY: AM	CHECKED BY: BC	PROJECT No. 15-816
DESIGNED BY: BC	CHECKED BY: SM	SHEET No. 6

SCALE: HORZ: 1:500
 VERT: 1:50