

**NOTE:**  
A GEOTECHNICAL ENGINEER LICENSED IN THE PROVINCE OF ONTARIO IS TO INSPECT ALL SUBGRADE SURFACES FOR FOOTING AND PAVEMENT STRUCTURES PRIOR TO CONSTRUCTION

**NOTE:**  
ALL EXISTING POST & WIRE FENCE, CULVERTS, UTILITY WIRE / POLES, TREES, SHRUBS ETC. WITHIN LOTS, BLOCKS AND ROADS TO BE REMOVED, UNLESS OTHERWISE NOTED

**NOTE RE: PERFORATED PIPE**  
PERFORATED PIPE IS REQUIRED FOR SWALE SLOPE LESS THAN 1.5%. REFER TO CITY STD. S29, S30 FOR REAR YARD TRENCH AND PIPE DETAIL ONLY

**NOTE:**  
ALL SWALES SHALL BE 0.15m DEEP WITH 3:1 SIDE SLOPES UNLESS OTHERWISE INDICATED

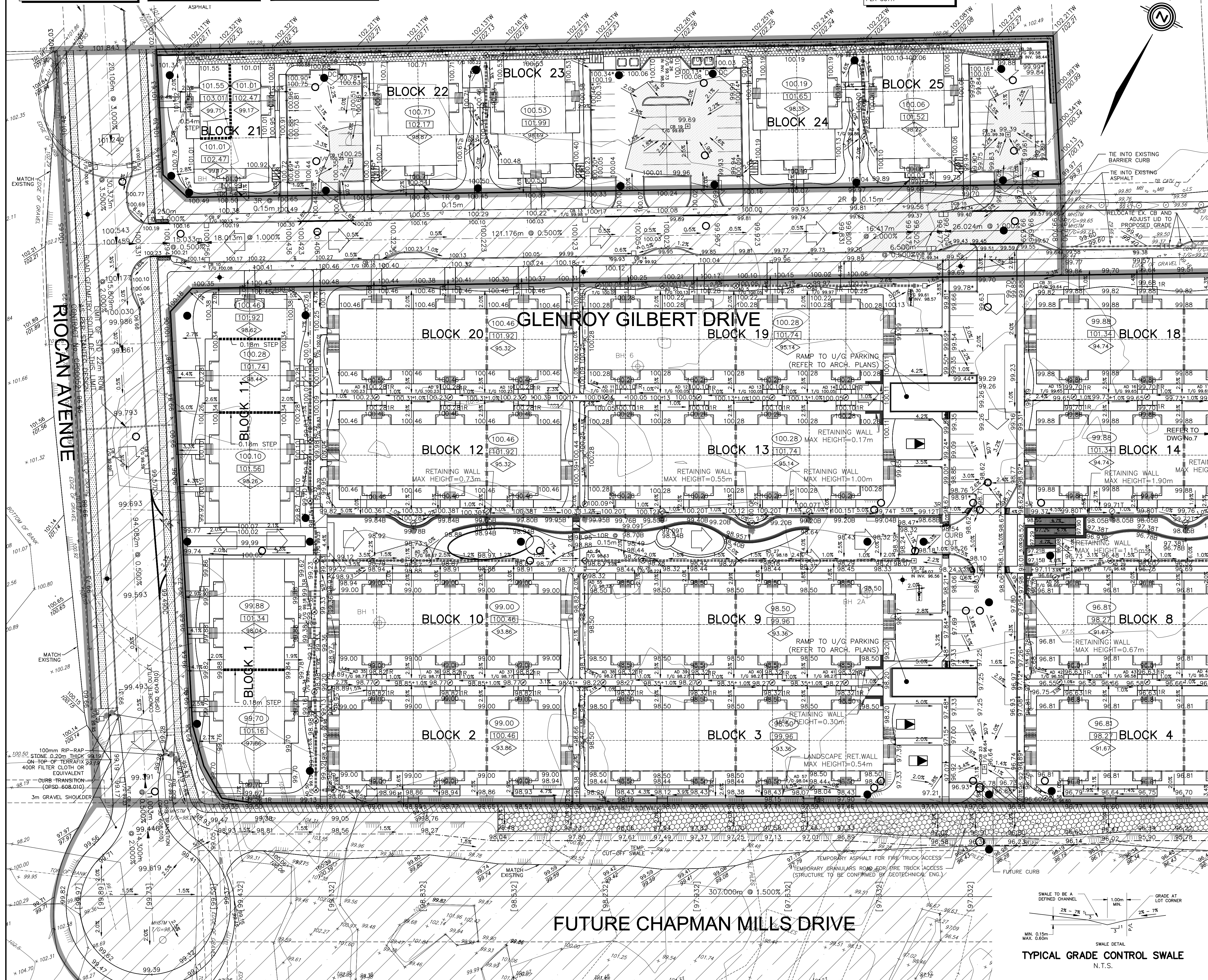
**NOTE:**  
REFER TO DETAIL ON DWG 2 FOR FURTHER DETAILS ON SERVICES TO THE STACKED TOWNHOMES

ANY DISTURBED AREA DURING CONSTRUCTION TO BE RESTORED TO THE ORIGINAL CONDITION OR BETTER TO THE SATISFACTION OF THE AUTHORITIES HAVING JURISDICTION

CONTRACTOR TO VERIFY THE PRECISE LOCATIONS AND INVERT ELEVATIONS OF EX UNDERGROUND SERVICES AND EX UTILITIES PRIOR TO STARTING CONSTRUCTION

PERMISSION REQUIRED FOR WORK ON ADJACENT LANDS  
**NOTE:**  
ENTRANCES TO PRIVATE SITE PER SC7.1

**NOTE:**  
REFER TO CITY STD. SC7.1 FOR DRIVEWAY DETAIL



**LEGEND**

PROPOSED ELEVATION	103.45	OVERLAND FLOW DIRECTION	→
EXISTING ELEVATION	102.73	EXTERNAL OVERLAND FLOW DIRECTION	→
FUTURE ELEVATION	[93.90]	EMERGENCY OVERLAND FLOW DIRECTION	→
PROPOSED SWALE GRADE	1.5%	TOP OF WALL ELEVATION	103.10 T
HIGH POINT	102.16	RETAINING WALL AND ELEVATIONS	102.44 B
STREET CATCHBASIN		BOTTOM OF WALL ELEVATION	102.44 B
STREET CATCHBASIN WITH CATCHBASIN MANHOLE		CHAINLINK FENCE (1.5m UNLESS OTHERWISE NOTED)	
TEE CATCHBASIN		NOISE BARRIER (3.0m UNLESS OTHERWISE NOTED)	
ELBOW CATCHBASIN		VALVE & VB	
HYDRANT, VALVE & VB		VALVE & VC	
VALVE & VC		VALVE & VB	
VALVE & VB		BUILDING ENVELOPE	
BUILDING ENVELOPE		TOP OF FOUNDATION (TOF)	
TOP OF FOUNDATION (TOF)		FINISHED FLOOR ELEVATION (FFE)	
FINISHED FLOOR ELEVATION (FFE)		UNDERSIDE OF FOOTING ELEVATION (USF)	
UNDERSIDE OF FOOTING ELEVATION (USF)		UNITS REQUIRING WATER PRESSURE REDUCING VALVES	
UNITS REQUIRING WATER PRESSURE REDUCING VALVES		WALKOUT UNITS	
WALKOUT UNITS		SLAB ON GRADE	
SLAB ON GRADE		250µ PVC PERFORATED PIPE (REFER TO CITY STD S29 FOR REAR YARD TRENCH AND PIPE DETAILS ONLY) (SUBRAN APPLIED FOR SLOPE LESS THAN 1.5%)	
250µ PVC PERFORATED PIPE (REFER TO CITY STD S29 FOR REAR YARD TRENCH AND PIPE DETAILS ONLY) (SUBRAN APPLIED FOR SLOPE LESS THAN 1.5%)		HYDRO SWITCHGEAR	
HYDRO SWITCHGEAR		HYDRO TRANSFORMER	
HYDRO TRANSFORMER		STREET LIGHT STANDARD	
STREET LIGHT STANDARD		TACTILE WALKING SURFACE INDICATOR (AS PER CITY OF OTTAWA STD. SC6)	
TACTILE WALKING SURFACE INDICATOR (AS PER CITY OF OTTAWA STD. SC6)		PREVIOUS PHASES / PHASES NOT PART OF CURRENT GRADING APPROVAL	
PREVIOUS PHASES / PHASES NOT PART OF CURRENT GRADING APPROVAL			

**NOT FOR CONSTRUCTION**

No.	BY	DATE	DESCRIPTION
7	S.L.M.	24-02-04	5TH SUBMISSION
6	S.L.M.	23-10-06	4TH SUBMISSION
5	S.L.M.	23-09-22	ISSUED FOR TENDER
4	S.L.M.	23-09-06	ISSUED FOR TENDER

**TOPOGRAPHIC INFORMATION**  
TOPOGRAPHIC INFORMATION PROVIDED BY STANTEC GEOMATICS LTD., PROJECT No. 161614291-111, DATED MARCH 1, 2022

**SITE PLAN INFORMATION**  
SITE PLAN PROVIDED BY SRN ARCHITECTS LTD., PROJECT No. S21001, DATED DECEMBER 14, 2023

**LEGAL INFORMATION**  
CALCULATED DRAFT PLAN PROVIDED BY STANTEC GEOMATICS LTD., PROJECT No. 161614291-131, DATED AUGUST 9, 2023

**BENCH MARK**  
ELEVATIONS ARE REFERRED TO THE CANADIAN GEODETIC VERTICAL DATUM (CGVD-1928:1978) AND ARE DERIVED FROM BENCHMARK MONUMENT No. 196530071\*, HAVING A PUBLISHED ELEVATION OF 99.742 METRES

MINTO COMMUNITIES INC. BARRHAVEN TOWN CENTRE STAGE 1

**DSEL** 120 Iber Road Unit 103 Slittsville, Ontario, K2S 1E9 Tel. (613) 836-0856 Fax. (613) 836-7183 www.DSEL.ca

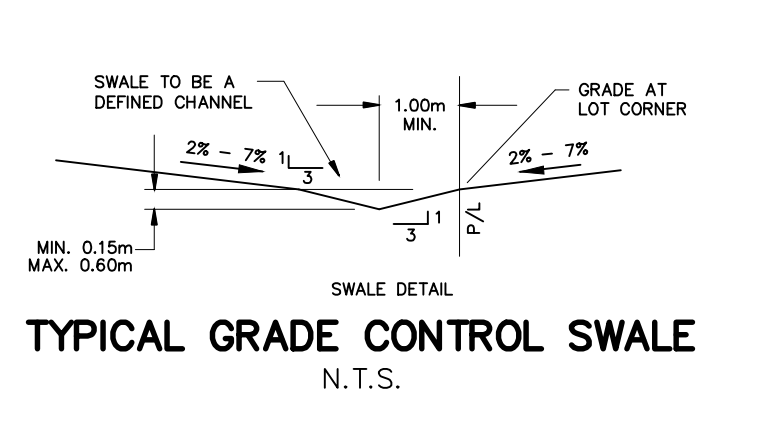
**S.L. MERRICK** 10016523 PROFESSIONAL ENGINEER PROVINCE OF ONTARIO

**Ottawa**

110 Laurier Ave W Ottawa, Ontario, K1P 1J1 Tel. (613) 580-2400 www.Ottawa.ca

**GRADING PLAN WEST**

DRAWN BY: AM	CHECKED BY: BC	PROJECT No. 15-816
DESIGNED BY: BC	CHECKED BY: SM	SHEET No. 6
SCALE: 1:400		



CITY PLAN No. 18822  
CITY FILE No. D07-12-22-0104