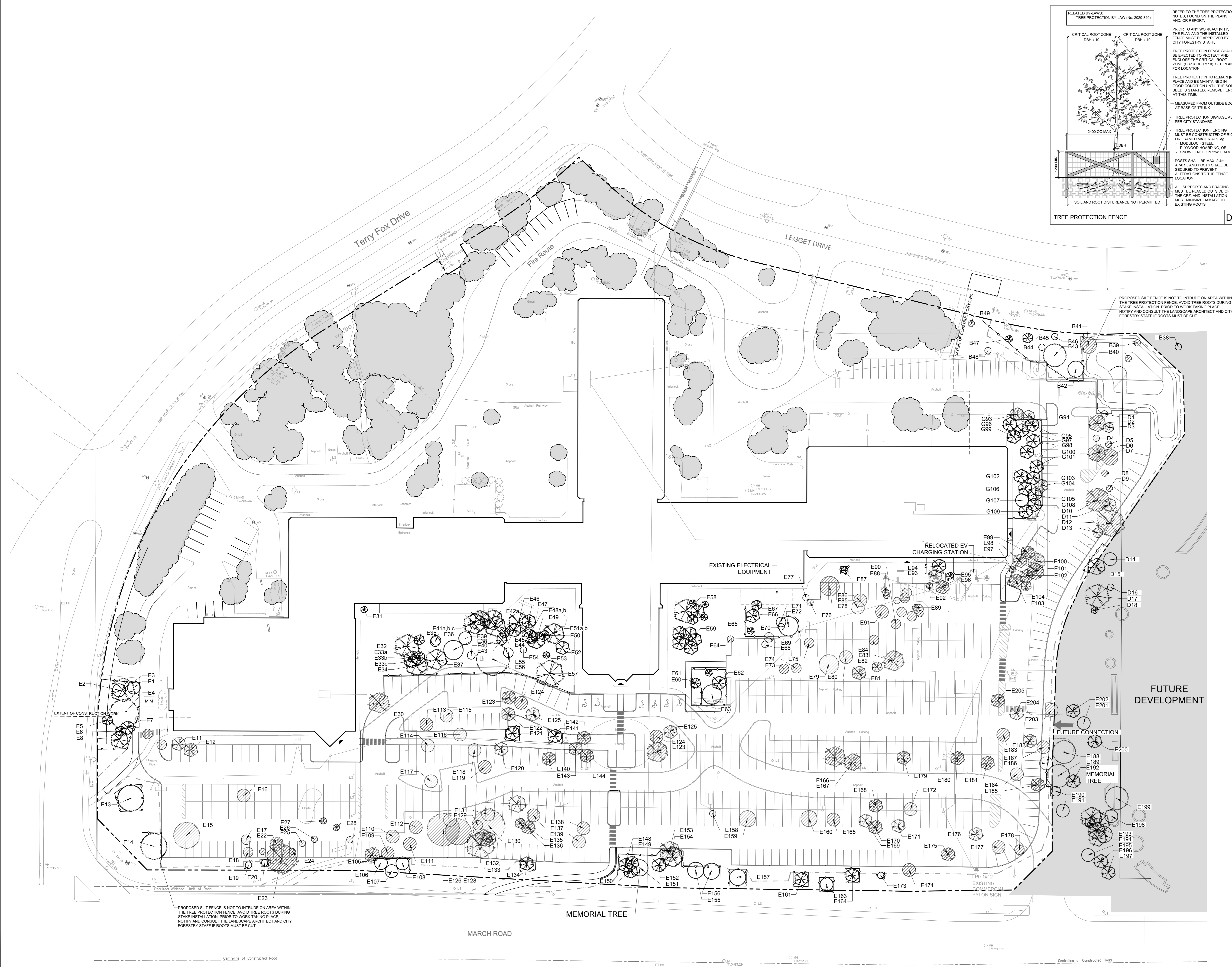
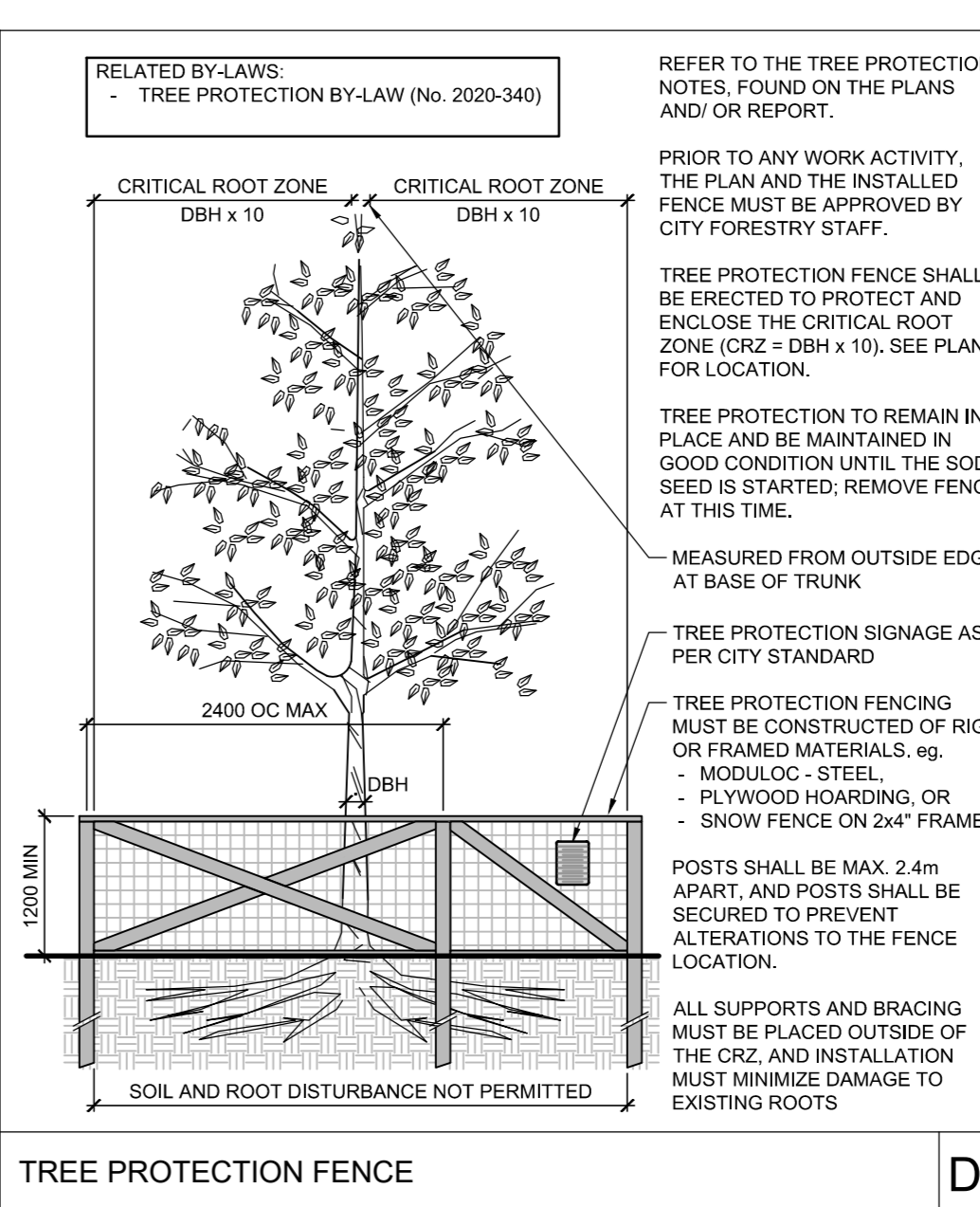


- LEGEND**
- 3-D1: DETAIL SHEET A OR CITY DETAIL NUMBER SEE LIST FOR CODE
 - PROPERTY LIMIT
 - EXISTING TREE TO REMAIN, SYMBOL SIZE REFLECTS CRZ
 - EXISTING TREE TO REMOVE, SYMBOL SIZE REFLECTS CRZ
 - TREE PROTECTION FENCE
 - SILT FENCE
 - EXISTING VEGETATION BEYOND THE LIMIT OF CONSTRUCTION TO REMAIN
- CITY DETAILS**
- Related details from City of Ottawa Standard Tender Documents Volume No. 2 Standard Detail Drawings.
 - SC4: Typical Concrete Sidewalk in Boulevard
 - SC5: Sidewalk Construction Joints
 - F5: 100mm Diameter Steel Ballot Installation for Parking
- NOVATECH DETAILS**
- Found on Sheet L2.
- D1: Standard Deciduous Tree Planting
 - D2: Standard Coniferous Tree Planting
 - D3: Shrub and Perennial Planting
 - D4: Tree Protection Fence
 - D5: Shrub Reinstatement
- SUMMARY OF TREES**
- There are a total of 133 existing trees to remain as indicated on 121334-TR1 plan.
 - There are a total of 151 existing trees to be removed as indicated on 121334-TR1 plan.
 - There are a total of 124 trees proposed, 88 trees in the property limit and 36 trees in the ROW along March road as indicated on the Landscape plan 121334-L1.
 - With 712 parking spaces proposed, a 5:1 ratio of parking to trees would yield a recommendation of 142 trees.
- TREE PROTECTION**
- Implement the following protection measures for retained trees, both on site and on adjacent sites, prior to any work activity, including tree removal. Maintain tree protection fence in place and in good condition for the duration of the site works:
- The Landscape Architect or Certified Arborist is to determine the location of the tree protection fencing and detail it on any associated plans for the site (e.g. tree conservation report, tree disclosure report, etc.).
 - Under the guidance of a Landscape Architect or Certified Arborist, erect a fence at the critical root zone (CRZ) of trees. Diameter at breast height (DBH) is the trunk diameter measured at 1.3m height on the tree trunk. The CRZ is calculated as DBH x 10. Refer to the Tree Protection Fence detail.
 - Refer to the Tree Protection Plan for fence location. City Forestry Staff are to approve both the plan and the installed fence prior to work commencement.
 - Do not place any material or equipment within 2m of the CRZ of any tree, including outhouses.
 - Do not attach any signs, notices, or posters to any tree.
 - Do not disturb, raise, or lower the existing grade within the CRZ without approval.
 - Only tunnel or bore when digging within the CRZ of a tree. Hand work only where required within the CRZ, absolutely no machinery permitted.
 - Do not damage the root system, trunk, or branches, or any tree.
 - Do not extend hard surface or significantly change landscaping.
 - Ensure that exhaust fumes from all equipment are directed away from any tree canopy.
 - When trees marked for removal overlap with the CRZ of trees marked for preservation, cut roots at the edge of the CRZ and grind down stumps after tree removals, do not pull out stumps. Ensure there is not root pulling or disturbance of the ground within the CRZ.
 - Prior to work taking place, notify and consult the Landscape Architect and City Forestry Staff if roots must be cut. Roots 200mm or larger should be cut at right angles with clean, sharp hand saws without tearing, crushing, or pulling. Refer to City of Ottawa Specification S.07.F-8011 Tree Protection, Excavation of Root Zone.
 - If damaged or objectionable branches are observed, consult the Landscape Architect, before any work is conducted. Do not prune leaders. Do not prune more than 1/4 of crown.
 - Set up a water and fertilizing program, if trees are being affected by site works, to the satisfaction of the Landscape Architect.
 - The Landscape Architect is to prescribe mitigation measures if the protected fenced area must be reduced to facilitate construction. Measures may include the placement of plywood, wood chips, or steel plating over the roots for protection. City Forestry Staff are to approve said measures prior to fence movement.
 - The Landscape Architect is to prescribe mitigation measures if the protected fenced area must be reduced to facilitate construction. Measures may include the placement of plywood, wood chips, or steel plating over the roots for protection. City Forestry Staff are to approve said measures prior to fence movement.
 - City of Ottawa By-law: Protects municipal trees and municipal natural areas in the City of Ottawa and trees on private property in the urban area of the City of Ottawa (2020-340).



PROPOSED SILT FENCE IS NOT TO INTRUDE ON AREA WITHIN THE TREE PROTECTION FENCE. AVOID TREE ROOTS DURING STAKE INSTALLATION. PRIOR TO WORK TAKING PLACE, NOTIFY AND CONSULT THE LANDSCAPE ARCHITECT AND CITY FORESTRY STAFF IF ROOTS MUST BE CUT.

This drawing has been prepared in conjunction with CSW Landscape Architects Limited and is based on the Tree Information Report (TIR) completed by CSW dated 27th October 2022. Information regarding tree removal and tree protection measures has been prepared by Novatech.

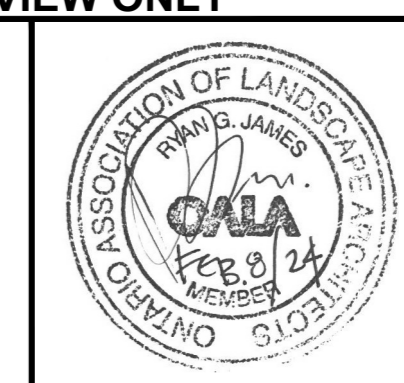
NOTE: THE POSITION OF ALL POLE LINES, CONDUITS, WATERMANS, SEWERS AND OTHER UNDERGROUND AND OVERGROUND UTILITIES AND STRUCTURES IS NOT NECESSARILY SHOWN ON THE CONTRACT DRAWINGS, AND WHERE SHOWN, THE ACCURACY OF THE POSITION OF SUCH UTILITIES AND STRUCTURES IS NOT GUARANTEED. BEFORE STARTING WORK, DETERMINE THE EXACT LOCATION OF ALL SUCH UTILITIES AND STRUCTURES AND ASSUME ALL LIABILITY FOR DAMAGE TO THEM.

OWNER INFORMATION
COLLIERS
 191 BAY STREET
 TORONTO, ONTARIO, M5J 2V1
 AARON CLOOD
 PHONE: (647) 798-9534
 EMAIL: Aaron.Clood@colliers.com

NOT FOR CONSTRUCTION

NO.	REVISION	DATE	BY
5	REVISED PER CITY COMMENTS	FEB 08/24	RJG
4	ADDRESS INSERTION ON TITLEBLOCK	DEC 21/23	RJG
3	REVISED PER CITY COMMENTS	DEC 06/23	RJG
2	REVISED PER CITY COMMENTS	NOV 08/23	RJG
1	ISSUED FOR CITY REVIEW	OCT 02/23	RJG

SCALE	FOR REVIEW ONLY
1:400	TCB
	RGJ
	TCB
	RGJ
	RGJ



NOVATECH
 Engineers, Planners & Landscape Architects
 Suite 200, 340 Michael Coopers Drive
 Ottawa, Ontario, Canada K2M 1P6
 Telephone: (613) 254-9643
 Facsimile: (613) 254-5887
 Website: www.novatech-eng.com

LOCATION
 CITY OF OTTAWA
 600 MARCH ROAD - NOKIA PARKING LOT EXPANSION
DRAWING NAME
 TREE CONSERVATION PLAN
PROJECT NO.
 121334-00
REV.
 REV 4
DRAWING NO.
 121334-TR1