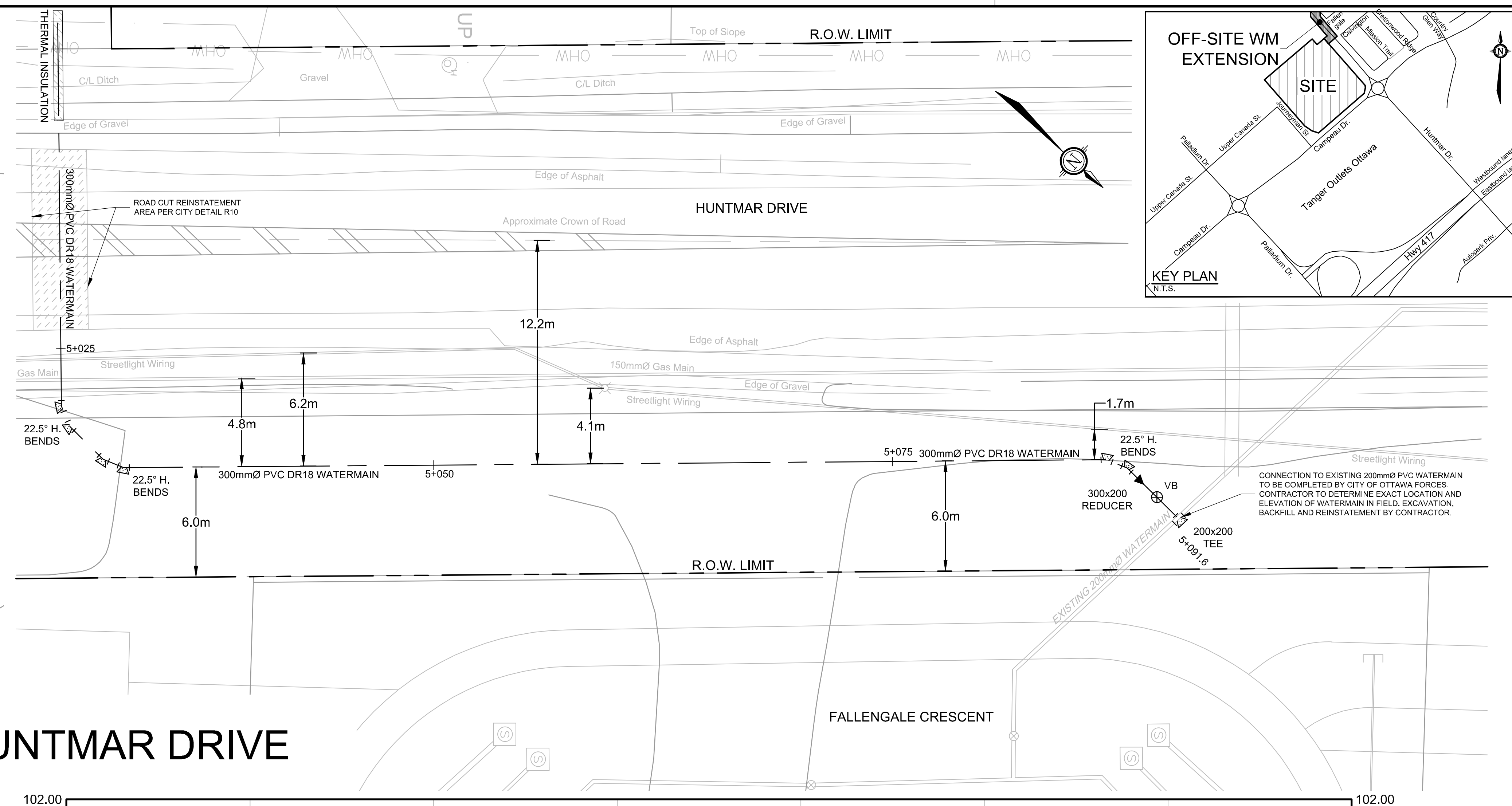
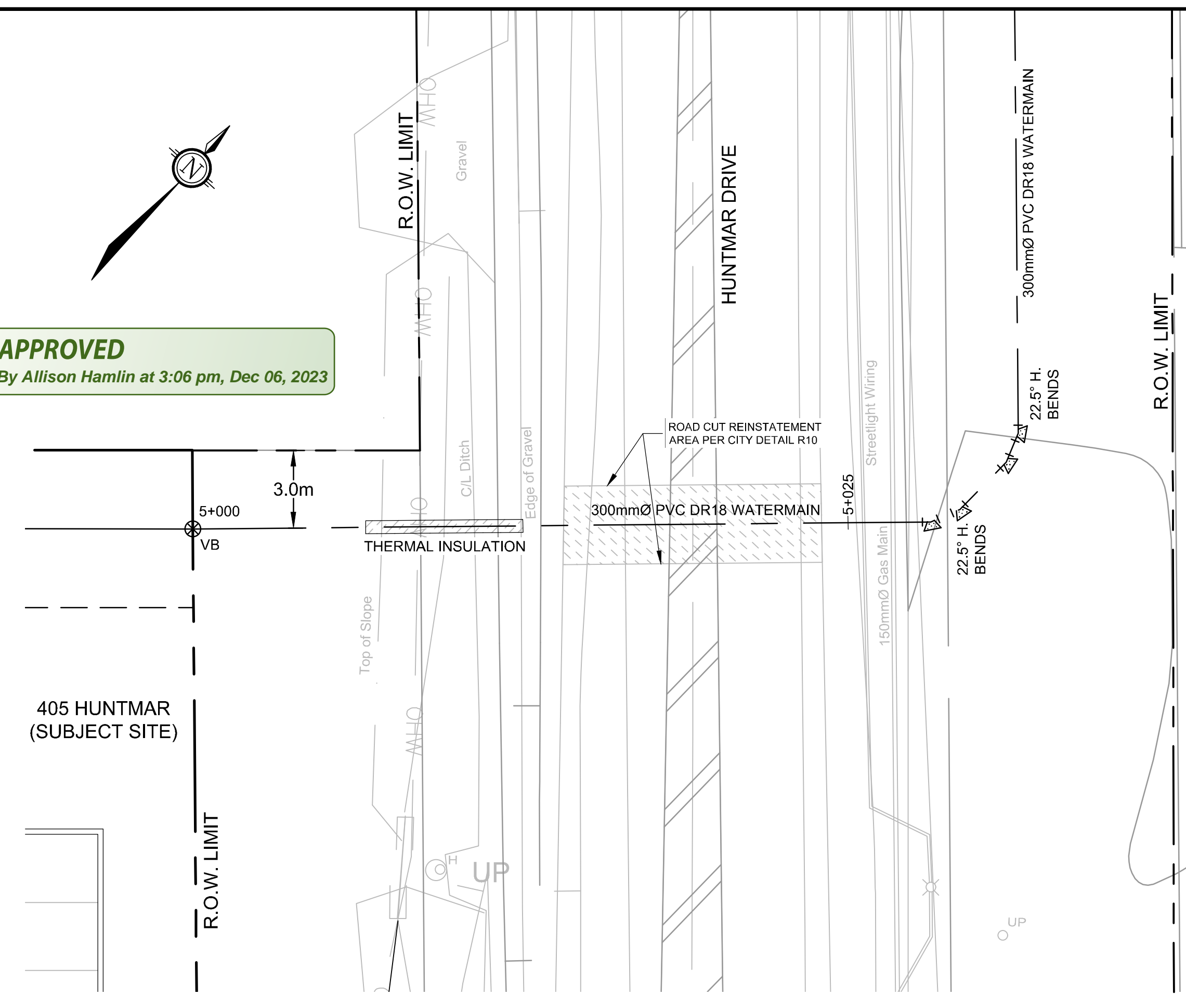
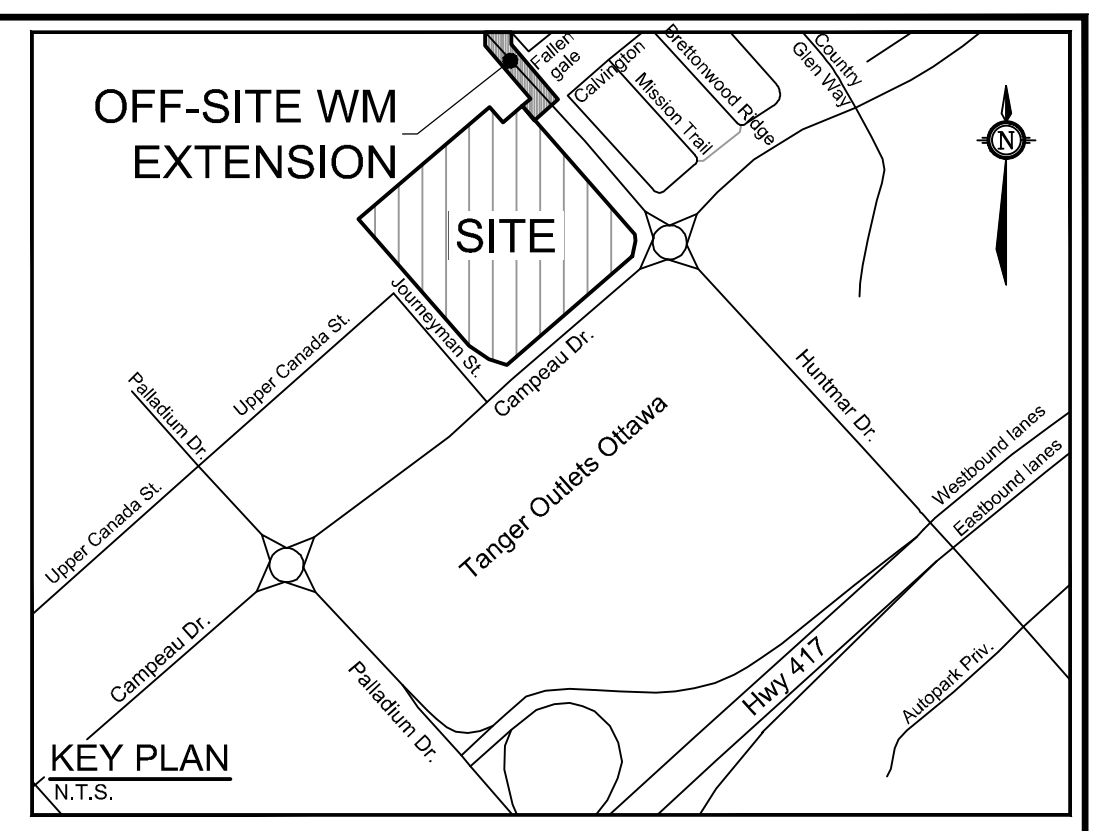
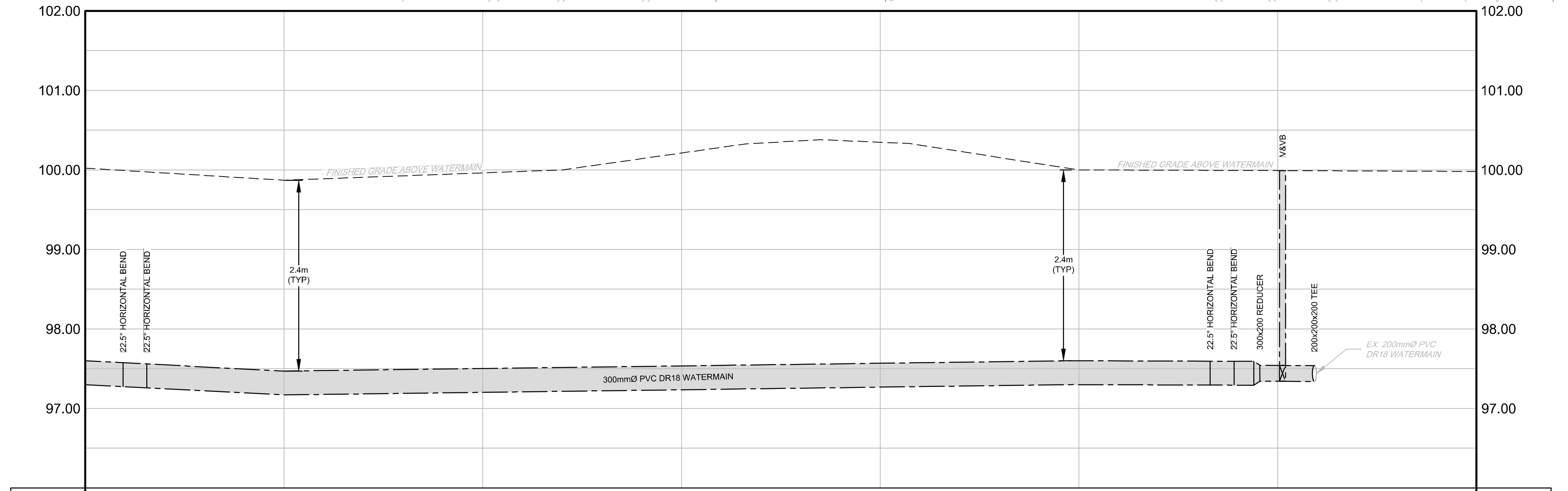
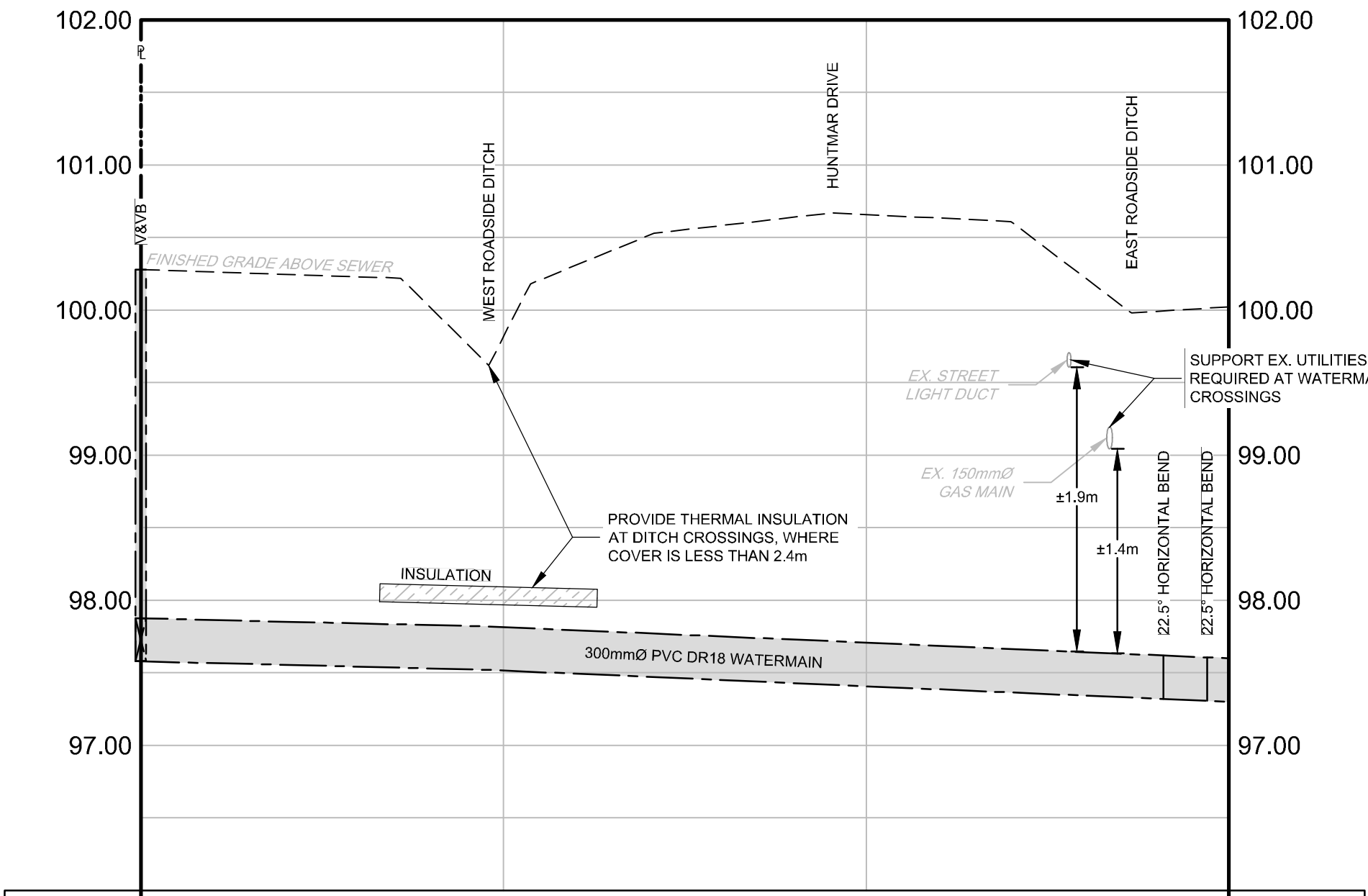


APPROVED
By Allison Hamlin at 3:06 pm, Dec 06, 2023



THIS PLAN IS TO BE READ IN CONJUNCTION WITH CIVIL PLANS
122151-NLD1,2&3, 122151-GP1&2 AND 122151-GR1&GR2

HUNTMAR DRIVE



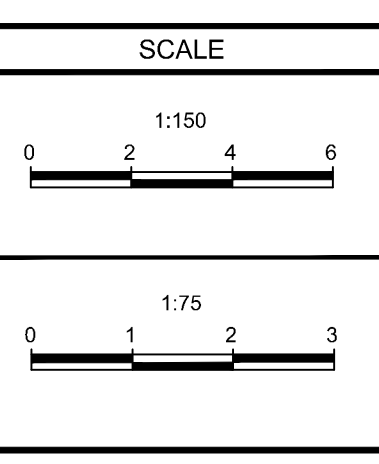
EXISTING GROUND ELEVATION	102.26	102.22	99.02	100.18	100.53	100.07	102.61	99.88	100.02	100.02	EXISTING GROUND ELEVATION
TOP OF WATERMAIN ELEVATION	97.88	97.62	97.92	300mm PVC DR18 WATERMAIN	97.96	97.60	97.60	97.60	97.60	97.60	TOP OF WATERMAIN ELEVATIONS
STORM SEWER INVERTS											STORM SEWER INVERTS
DESCRIPTION	CHAINAGE	5+000	5+006 & DITCH	5+010	5+020	5+027.3 DITCH	5+028.2 H.BEND	5+030	5+031.1 H.BEND	5+030	DESCRIPTION

EXISTING GROUND ELEVATION	102.03	102.00	99.86	99.87	99.86	102.21	102.38	102.35	100.00	99.89	99.89	99.89	99.89	99.89	99.89	EXISTING GROUND ELEVATION
TOP OF WATERMAIN ELEVATIONS	97.60	97.60	97.58	97.47	300mm PVC DR18 WATERMAIN	97.50	97.54	97.57	300mm PVC DR18 WATERMAIN	97.60	97.60	97.60	97.55	97.55	97.55	TOP OF WATERMAIN ELEVATIONS
STORM SEWER INVERTS																STORM SEWER INVERTS
DESCRIPTION	CHAINAGE	5+030	5+031.9 H.BEND	5+033.1 H.BEND	5+040	5+050	5+060	5+070	5+080	5+086.6 H.BEND	5+087.8 H.BEND	5+088.1 H.BEND	5+090.1 V&VB	5+091.6 TEE	5+091.6	DESCRIPTION

NOTE:
THE POSITION OF ALL POLE LINES, CONDUITS, WATERMANS, SEWERS AND OTHER UNDERGROUND AND OVERGROUND UTILITIES AND STRUCTURES IS NOT NECESSARILY SHOWN ON THE CONTRACT DRAWINGS, AND WHERE SHOWN, THE ACCURACY OF THE POSITION OF SUCH UTILITIES AND STRUCTURES IS NOT GUARANTEED. BEFORE STARTING WORK, DETERMINE THE EXACT LOCATION OF ALL SUCH UTILITIES AND STRUCTURES AND ASSUME ALL LIABILITY FOR DAMAGE TO THEM.

Allison Hamlin
ALLISON HAMLIN
MANAGER (A), DEVELOPMENT REVIEW WEST
PLANNING, REAL ESTATE & ECONOMIC DEVELOPMENT
DEPARTMENT, CITY OF OTTAWA

No.	REVISION	DATE	BY	No.	REVISION	DATE	BY
8	ISSUED FOR MUNICIPAL CONSENT	NOV 10/23	DDB	2	REVISED PER CITY COMMENTS	MAR 30/23	DDB
7	ISSUED FOR CONSTRUCTION	OCT 27/23	DDB	1	ISSUED FOR CITY OF OTTAWA REVIEW	DEC 16/22	DDB
6	RE-ISSUED FOR SITE PLAN APPROVAL	SEPT 15/23	DDB				
5	ISSUED FOR SITE PLAN APPROVAL	AUG 4/23	DDB				
4	ISSUED FOR BUILDING PERMIT	JUL 14/23	DDB				
3	REVISED PER CITY COMMENTS	MAY 31/23	DDB				
2	REVISED PER CITY COMMENTS	MAR 30/23	DDB				
1	ISSUED FOR CITY OF OTTAWA REVIEW	DEC 16/22	DDB				
9	REVISED 300mm WATERMAIN PER CITY COMMENTS	DEC 5/23	DDB				



DESIGN	SM / BM / DDB
CHECKED	DDB
DESIGN	SM
CHECKED	BM / DDB
APPROVED	DDB



NOVATECH
Engineers, Planners & Landscape Architects
Suite 200, 240 Michael Cowpland Drive
Ottawa, Ontario, Canada K2M 1P6
Telephone: (613) 254-9643
Facsimile: (613) 254-5867
Website: www.novatech-eng.com

LOCATION
CITY OF OTTAWA
405 HUNTMAR DRIVE - WAREHOUSE DEVELOPMENT
DRAWING NAME
PLAN and PROFILE
OFF-SITE WATERMAIN EXTENSION
STATION 5+000 to 5+100
PROJECT NO.
122151
REV # 9
DRAWING NO.
122151-PR1