



LEGEND

- MS-1 PREFINISHED VERTICAL METAL SIDING TYPE 1- IDEAL ROOFING HERITAGE SERIES- REGENT GRAY
- MS-2 PREFINISHED VERTICAL METAL SIDING TYPE 2- IDEAL ROOFING HERITAGE SERIES- BLACK MICA
- MF-1 PREFINISHED METAL FLASHING TYPE 1- TO MATCH REGENT GRAY
- MF-2 PREFINISHED METAL FLASHING TYPE 2- TO MATCH BLACK MICA
- HP-1 HARDIE PANEL MAGNOLIA COLLECTION - COLOUR: MIDNIGHT SOOT
- BV-1 BRICK VENEER TYPE 1- MERIDIAN BRICK - WAKEFIELD BORDEAU
- BSC-1 BRICK SOLIDER COURSE TYPE 1 - MERIDIAN BRICK - WAKEFIELD BORDEAU
- BLV-1 BLOCK VENEER TYPE 1 BRAMPTON BRICK - FINESSE MINERAL GRAY, SAUVIE
- PC-1 PRECAST CONCRETE SILL BRAMPTON BRICK - FINESSE MINERAL GRAY, SAUVIE
- PC-2 PRECAST CONCRETE CAP BRAMPTON BRICK - FINESSE MINERAL GRAY, SAUVIE
- CP CEMENT PARING
- W1 WINDOW TYPE
- D1 EXTERIOR DOOR TYPE
- SC DENOTES OPERABLE WINDOW
- SC OVER FLOW SCUPPER SEE ROOF PLAN
- CJ MASONRY CONTROL JOINT
- LF LIGHT FIXTURE - REFER TO ELEC
- GR CUSTOM POWDER COATED STEEL GUARD FRAME & PERFORATED STEEL SCREEN
- SO-1 PRE-FINISHED METAL SOFFIT c/w VENT STRIPS. COLOUR TO MATCH FASCIA.
- SO-2 CLEAR CEDAR SOFFIT c/w VENT STRIPS. CUTEK STAIN FINISH. COLOUR TBD.

GENERAL NOTES:
REFER TO CIVIL DRAWINGS FOR GRADING ELEVATIONS
REFER TO SPEC SECTION 09 00 02 EXTERIOR FINISHES COLOR LEGEND FOR FULL MATERIALS DESCRIPTION

no.	date	revision
11	2024-01-17	RE-ISSUED FOR SITE PLAN APPROVAL
10	2024-01-05	ISSUED FOR SITE PLAN APPROVAL
9	2023-12-22	ISSUED FOR TENDER
8	2023-12-12	ISSUED ZONING DEFICIENCY RESPONSE
7	2023-12-08	ISSUED FOR TENDER COORDINATION
6	2023-11-09	ISSUED FOR BUILDING PERMIT
5	2023-09-14	ISSUED TO LIGHTING CONSULTANT
4	2023-09-11	ISSUED FOR CONSULTANT COORDINATION
3	2023-07-13	RE-LABELLING FOR exp
2	2023-06-28	RE-ISSUED FOR ENERGY MODELING
1	2023-06-23	ISSUED FOR ENERGY MODELING

It is the responsibility of the appropriate contractor to check and verify all dimensions on site and report all errors and/or omissions to the architect.

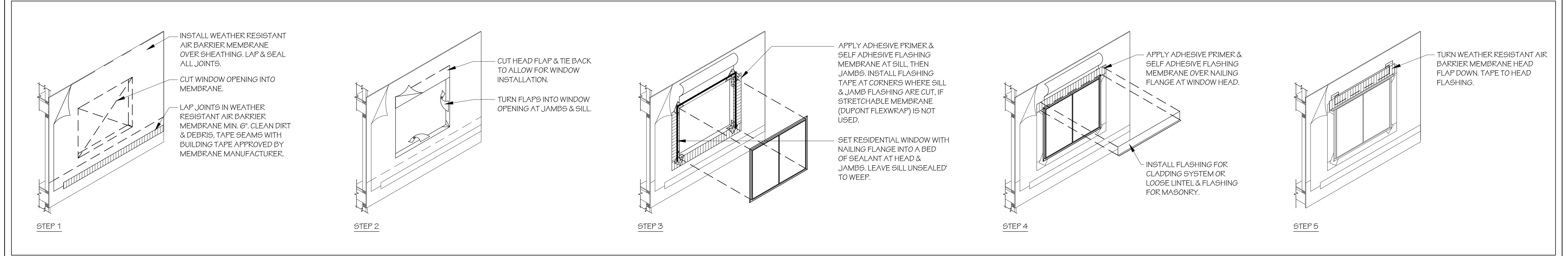
All contractors must comply with all pertinent codes and by-laws.

Do not scale drawings.

This drawing may not be used for construction until signed.

Copyright reserved.

1 SOUTH ELEVATION
SCALE: 1/4"=1'-0"



2 TYPICAL WINDOW PENETRATION FLASHING INSULATION DETAIL
SCALE: N.T.S.

Hobin Architecture Incorporated
63 Pamela Street
Ottawa, Ontario
Canada K1S 3K7
T: 613-238-7200
F: 613-238-2005
E: info@hobinarc.com
hobinarc.com

project title
LARCH APARTMENTS
15 LARCH ST, OTTAWA, ONTARIO

drawing title
FRONT ELEVATION

drawn	date	scale
SC	JUNE 2023	AS NOTED

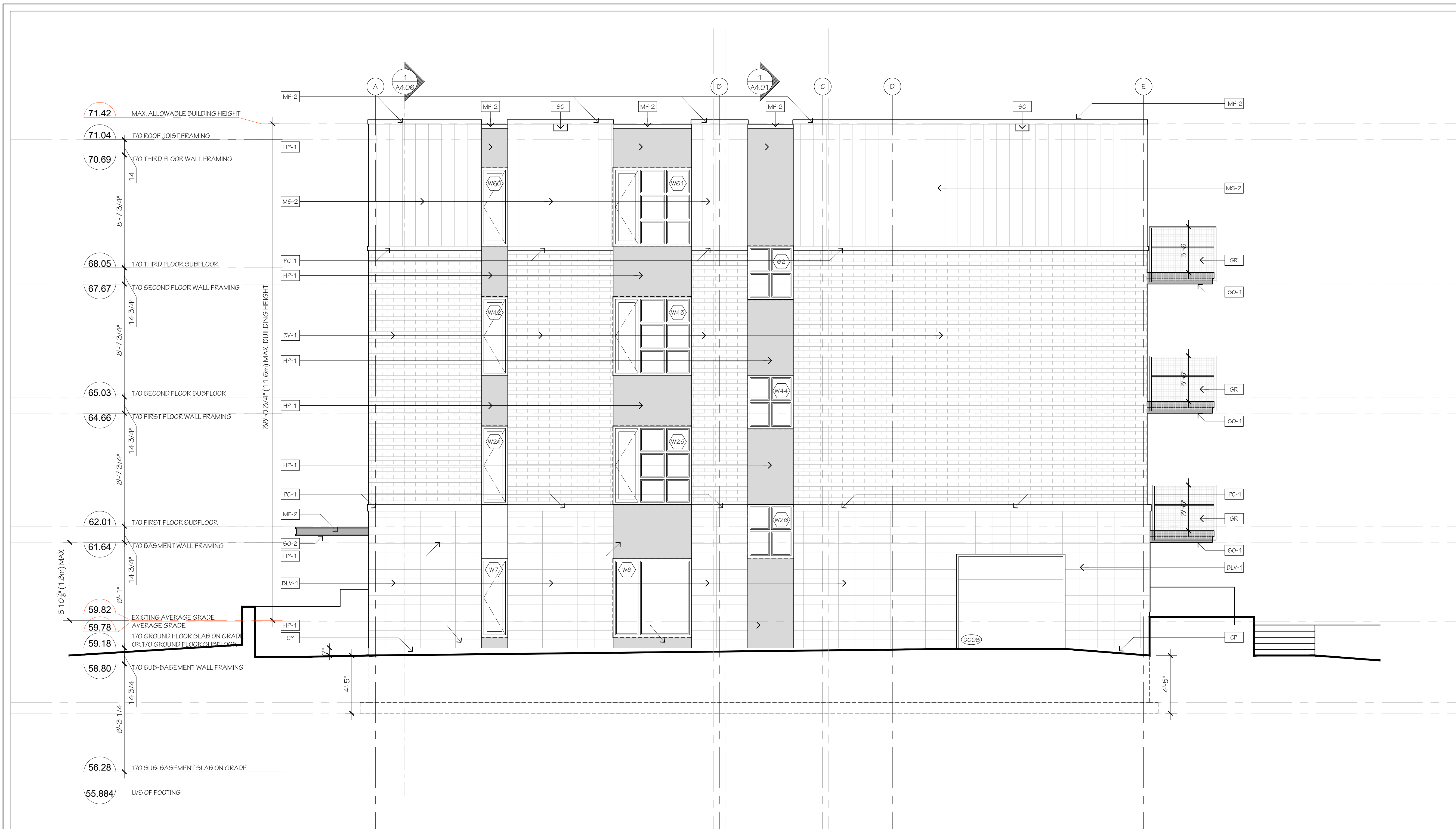
project
2024

drawing no.
A3.01

revision no.

ANTONIO J. HOBIN
LICENCE
3049

D07-12-22-0027



LEGEND

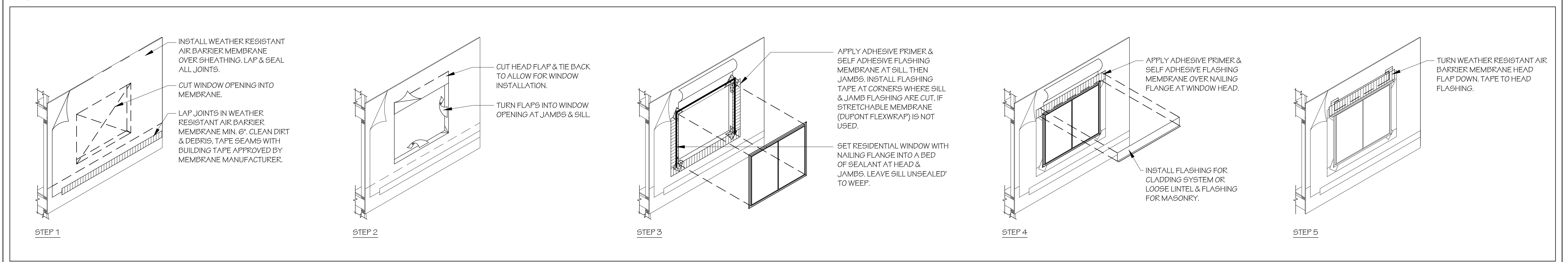
- MS-1 PREFINISHED VERTICAL METAL SIDING TYPE 1 - IDEAL ROOFING HERITAGE SERIES - REGENT GRAY
- MS-2 PREFINISHED VERTICAL METAL SIDING TYPE 2 - IDEAL ROOFING HERITAGE SERIES - BLACK MICA
- MF-1 PREFINISHED METAL FLASHING TYPE 1 - TO MATCH REGENT GRAY
- MF-2 PREFINISHED METAL FLASHING TYPE 2 - TO MATCH BLACK MICA
- HP-1 HARDIE PANEL MAGNOLIA COLLECTION - COLOUR: MIDNIGHT SOOT
- BV-1 BRICK VENEER TYPE 1 - MERIDIAN BRICK - WAKEFIELD BORDEAU
- BSC-1 BRICK SOLIDER COURSE TYPE 1 - MERIDIAN BRICK - WAKEFIELD BORDEAU
- BLV-1 BLOCK VENEER - TYPE 1 BRAMPTON BRICK - FINESSE MINERAL GRAY, SAUVÉ
- PC-1 PRECAST CONCRETE SILL BRAMPTON BRICK - FINESSE MINERAL GRAY, SAUVÉ
- PC-2 PRECAST CONCRETE CAP BRAMPTON BRICK - FINESSE MINERAL GRAY, SAUVÉ
- CP CEMENT PARING
- W1 WINDOW TYPE
- D1 EXTERIOR DOOR TYPE
- SC OVERFLOW SCUPPER SEE ROOF PLAN
- CJ MASONRY CONTROL JOINT
- LF LIGHT FIXTURE - REFER TO ELEC
- GR CUSTOM POWDER COATED STEEL GUARD FRAME & PERFORATED STEEL SCREEN
- SO-1 PRE-FINISHED METAL SOFFIT c/w VENT STRIPS. COLOUR TO MATCH FASCIA.
- SO-2 CLEAR CEDAR SOFFIT c/w VENT STRIPS. CUTEK STAIN FINISH. COLOUR TBD.

GENERAL NOTES:
 REFER TO CIVIL DRAWINGS FOR GRADING ELEVATIONS
 REFER TO SPEC SECTION 09 00 02 EXTERIOR FINISHES COLOR LEGEND FOR FULL MATERIALS DESCRIPTION

no.	date	revision
11	2024-01-17	RE-ISSUED FOR SITE PLAN APPROVAL
10	2024-01-05	ISSUED FOR SITE PLAN APPROVAL
9	2023-12-22	ISSUED FOR TENDER
8	2023-12-12	ISSUED ZONING DEFICIENCY RESPONSE
7	2023-12-08	ISSUED FOR TENDER COORDINATION
6	2023-11-09	ISSUED FOR BUILDING PERMIT
5	2023-09-14	ISSUED TO LIGHTING CONSULTANT
4	2023-09-11	ISSUED FOR CONSULTANT COORDINATION
3	2023-07-13	RE-LABELLING FOR exp
2	2023-06-28	RE-ISSUED FOR ENERGY MODELING
1	2023-06-23	ISSUED FOR ENERGY MODELING

It is the responsibility of the appropriate contractor to check and verify all dimensions on site and report all errors and/or omissions to the architect.
 All contractors must comply with all pertinent codes and by-laws.
 Do not scale drawings.
 This drawing may not be used for construction until signed.
 Copyright reserved.

1 EAST ELEVATION
 SCALE: 1/4"=1'-0"



2 TYPICAL WINDOW PENETRATION FLASHING INSULATION DETAIL
 SCALE: N.T.S.

ROCAHOMES

Hobin Architecture Incorporated
 63 Pamela Street
 Ottawa, Ontario
 Canada K1S 3K7
 T: 613-238-7200
 F: 613-238-2005
 E: mail@hobinarc.com
 hobinarc.com

HOBIN ARCHITECTURE

project title
LARCH APARTMENTS
15 LARCH ST. OTTAWA, ONTARIO

drawing title
RIGHT-SIDE ELEVATION

drawn SC	date JUNE 2023	scale AS NOTED
project 2024		project 2024
drawing no. A3.02		revision no.

ONTARIO ASSOCIATION OF ARCHITECTS
 LARRY J. HOBIN
 LICENCE 3049

D07-12-22-0027



LEGEND

- MS-1 PREFINISHED VERTICAL METAL SIDING TYPE 1 - IDEAL ROOFING HERITAGE SERIES - REGENT GRAY
- MS-2 PREFINISHED VERTICAL METAL SIDING TYPE 2 - IDEAL ROOFING HERITAGE SERIES - BLACK MICA
- MF-1 PREFINISHED METAL FLASHING TYPE 1 - TO MATCH REGENT GRAY
- MF-2 PREFINISHED METAL FLASHING TYPE 2 - TO MATCH BLACK MICA
- HP-1 HARDIE PANEL MAGNOLIA COLLECTION - COLOUR: MIDNIGHT SOOT
- BV-1 BRICK VENEER TYPE 1 - MERIDIAN BRICK - WAKEFIELD BORDEAU
- BSC-1 BRICK SOLIDER COURSE TYPE 1 - MERIDIAN BRICK - WAKEFIELD BORDEAU
- BLV-1 BLOCK VENEER TYPE 1 BRAMPTON BRICK - FINESSE MINERAL GRAY, SAUVÉ
- PC-1 PRECAST CONCRETE SILL BRAMPTON BRICK - FINESSE MINERAL GRAY, SAUVÉ
- PC-2 PRECAST CONCRETE CAP BRAMPTON BRICK - FINESSE MINERAL GRAY, SAUVÉ
- CP CEMENT PARING
- W1 WINDOW TYPE
- D1 EXTERIOR DOOR TYPE
- SC DENOTES OPERABLE WINDOW
- OVERFLOW SCUPPER SEE ROOF PLAN
- CJ MASONRY CONTROL JOINT
- LF LIGHT FIXTURE - REFER TO ELEC
- GR CUSTOM POWDER COATED STEEL GUARD FRAME & PERFORATED STEEL SCREEN
- SO-1 PRE-FINISHED METAL SOFFIT c/w VENT STRIPS. COLOUR TO MATCH FASCIA.
- SO-2 CLEAR CEDAR SOFFIT c/w VENT STRIPS. CUTEK STAIN FINISH. COLOUR TBD.

GENERAL NOTES:
 REFER TO CIVIL DRAWINGS FOR GRADING ELEVATIONS
 REFER TO SPEC SECTION 09 00 02 EXTERIOR FINISHES COLOR LEGEND FOR FULL MATERIALS DESCRIPTION

no.	date	revision
11	2024-01-17	RE-ISSUED FOR SITE PLAN APPROVAL
10	2024-01-05	ISSUED FOR SITE PLAN APPROVAL
9	2023-12-22	ISSUED FOR TENDER
8	2023-12-12	ISSUED ZONING DEFICIENCY RESPONSE
7	2023-12-08	ISSUED FOR TENDER COORDINATION
6	2023-11-09	ISSUED FOR BUILDING PERMIT
5	2023-09-14	ISSUED TO LIGHTING CONSULTANT
4	2023-09-11	ISSUED FOR CONSULTANT COORDINATION
3	2023-07-13	RE-LABELLING FOR exp
2	2023-06-28	RE-ISSUED FOR ENERGY MODELING
1	2023-06-23	ISSUED FOR ENERGY MODELING

It is the responsibility of the appropriate contractor to check and verify all dimensions on site and report all errors and/or omissions to the architect.

All contractors must comply with all pertinent codes and by-laws.

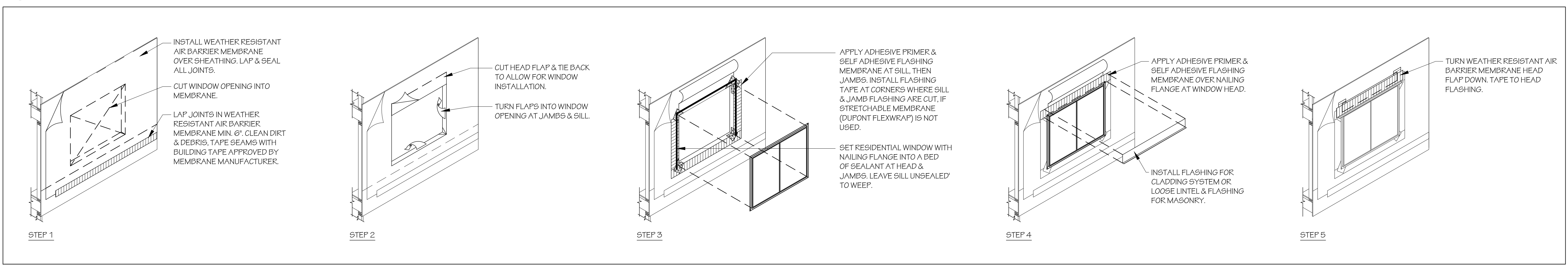
Do not scale drawings.

This drawing may not be used for construction until signed.

Copyright reserved.



1 NORTH ELEVATION
SCALE: 1/4"=1'-0"



2 TYPICAL WINDOW PENETRATION FLASHING INSULATION DETAIL
SCALE: N.T.S.

Hobin Architecture Incorporated
 63 Pamela Street
 Ottawa, Ontario
 Canada K1S 3K7
 T: 613 238-7200
 F: 613 235-2005
 E: mail@hobin.com
 hobin.com
HOBIN ARCHITECTURE

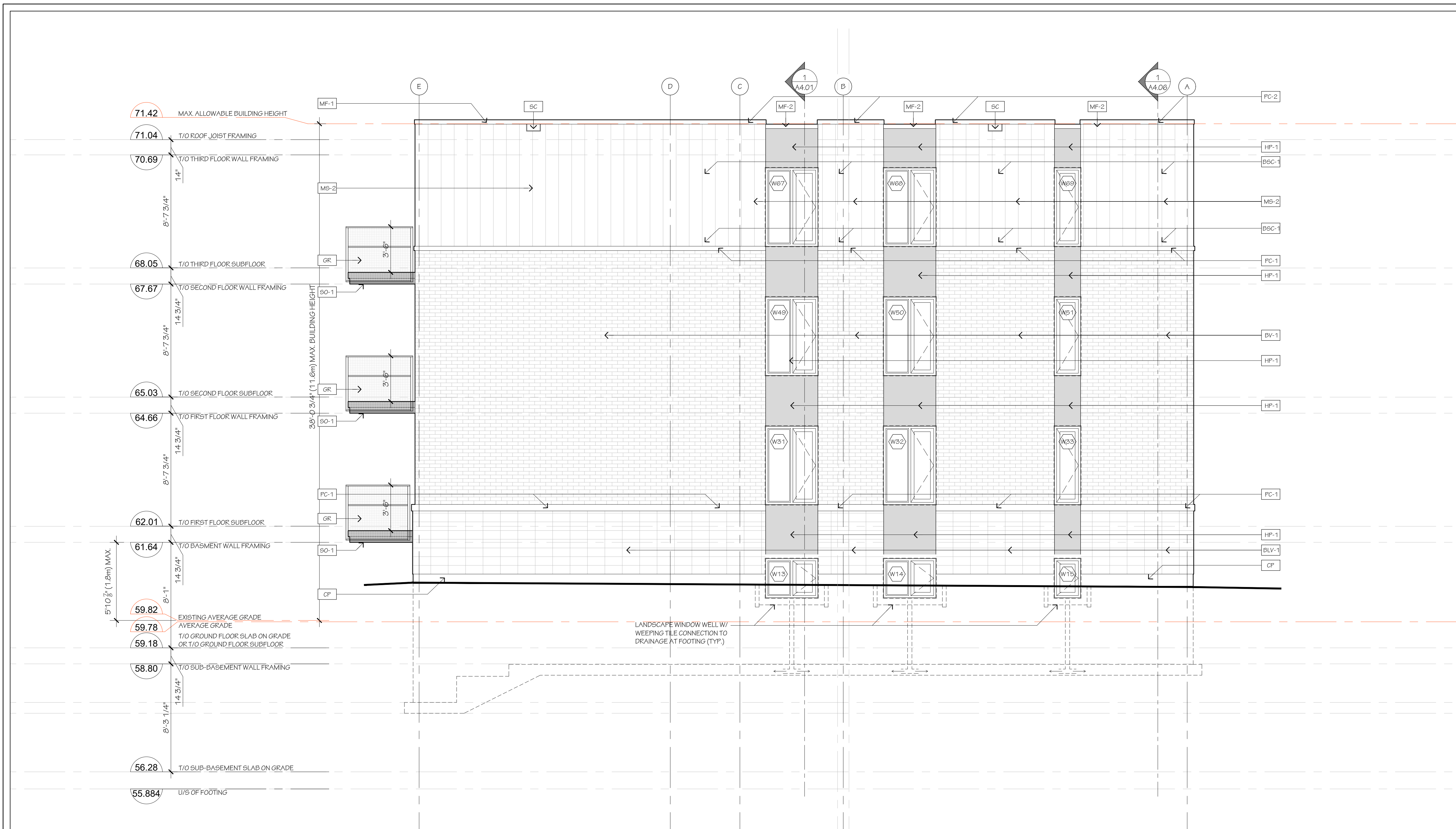
project title
LARCH APARTMENTS
15 LARCH ST. OTTAWA, ONTARIO

drawing title
REAR ELEVATION

drawn by SC	date JUNE 2023	scale AS NOTED
project 2024		
drawing no. A3.03		
revision no.		

ONTARIO ASSOCIATION OF ARCHITECTS
 CAROL J. HOBIN
 LICENCE 3049

D07-12-22-0027



LEGEND

- MS-1 PREFINISHED VERTICAL METAL SIDING TYPE 1 - IDEAL ROOFING HERITAGE SERIES - REGENT GRAY
- MS-2 PREFINISHED VERTICAL METAL SIDING TYPE 2 - IDEAL ROOFING HERITAGE SERIES - BLACK MICA
- MF-1 PREFINISHED METAL FLASHING TYPE 1 - TO MATCH REGENT GRAY
- MF-2 PREFINISHED METAL FLASHING TYPE 2 - TO MATCH BLACK MICA
- HP-1 HARDIE PANEL MAGNOLIA COLLECTION - COLOUR: MIDNIGHT SOOT
- BV-1 BRICK VENEER TYPE 1 - MERIDIAN BRICK - WAKEFIELD BORDEAU
- BSC-1 BRICK SOLIDER COURSE TYPE 1 - MERIDIAN BRICK - WAKEFIELD BORDEAU
- BLV-1 BLOCK VENEER TYPE 1 BRAMPTON BRICK - FINESSE MINERAL GRAY, SAUVÉ
- PC-1 PRECAST CONCRETE SILL BRAMPTON BRICK - FINESSE MINERAL GRAY, SAUVÉ
- PC-2 PRECAST CONCRETE CAP BRAMPTON BRICK - FINESSE MINERAL GRAY, SAUVÉ
- CP CEMENT PARING
- W1 WINDOW TYPE
- D1 EXTERIOR DOOR TYPE
- SO-1 DENOTES OPERABLE WINDOW
- SC OVERFLOW SCUPPER SEE ROOF PLAN
- CJ MASONRY CONTROL JOINT
- LF LIGHT FIXTURE - REFER TO ELEC
- GR CUSTOM POWDER COATED STEEL GUARD FRAME & PERFORATED STEEL SCREEN
- SO-1 PRE-FINISHED METAL SOFFIT c/w VENT STRIPS. COLOUR TO MATCH FASCIA.
- SO-2 CLEAR CEDAR SOFFIT c/w VENT STRIPS. CUTEK STAIN FINISH. COLOUR TBD.

GENERAL NOTES:

- REFER TO CIVIL DRAWINGS FOR GRADING ELEVATIONS
- REFER TO SPEC SECTION 09 00 02 EXTERIOR FINISHES COLOR/LEGEND FOR FULL MATERIALS DESCRIPTION

no.	date	revision
11	2024-01-17	RE-ISSUED FOR SITE PLAN APPROVAL
10	2024-01-05	ISSUED FOR SITE PLAN APPROVAL
9	2023-12-22	ISSUED FOR TENDER
8	2023-12-12	ISSUED ZONING DEFICIENCY RESPONSE
7	2023-12-08	ISSUED FOR TENDER COORDINATION
6	2023-11-09	ISSUED FOR BUILDING PERMIT
5	2023-09-14	ISSUED TO LIGHTING CONSULTANT
4	2023-09-11	ISSUED FOR CONSULTANT COORDINATION
3	2023-07-13	RE-LABELLING FOR exp
2	2023-06-29	RE-ISSUED FOR ENERGY MODELING
1	2023-06-23	ISSUED FOR ENERGY MODELING

ROCAHOMES

HOBIN ARCHITECTURE

Hobin Architecture Incorporated
 63 Pamela Street
 Ottawa, Ontario
 Canada K1S3K7
 T: 613-238-7200
 F: 613-238-2005
 E: mail@hobinarc.com
 hobinarc.com

project title
LARCH APARTMENTS
15 LARCH ST. OTTAWA, ONTARIO

drawing title
LEFT-SIDE ELEVATION

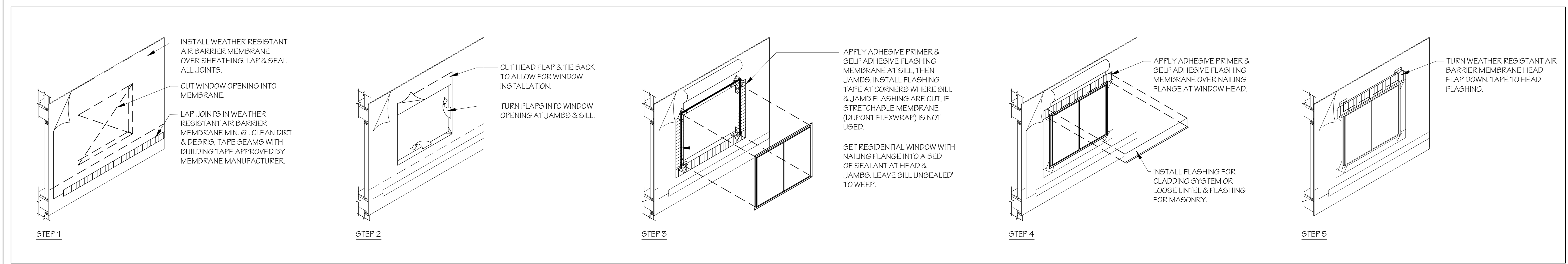
drawn	date	scale
SC	JUNE 2023	AS NOTED

project 2024
 drawing no. **A3.04**
 revision no.

ONTARIO ASSOCIATION OF ARCHITECTS
 LARRY J. HOBIN
 LICENCE 3049

D07-12-22-0027

1 WEST ELEVATION
 SCALE: 1/4"=1'-0"



2 TYPICAL WINDOW PENETRATION FLASHING INSULATION DETAIL
 SCALE: N.T.S.