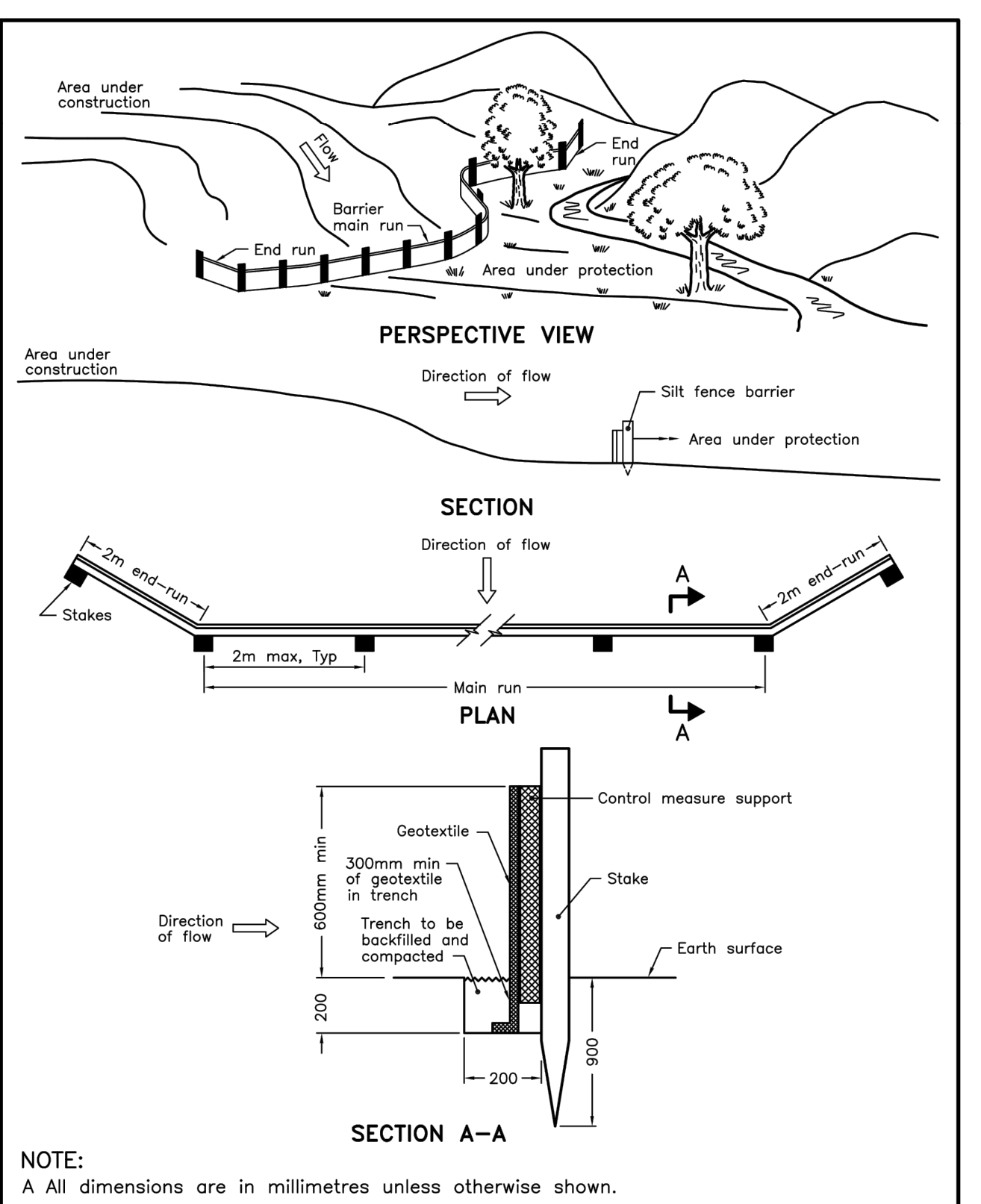
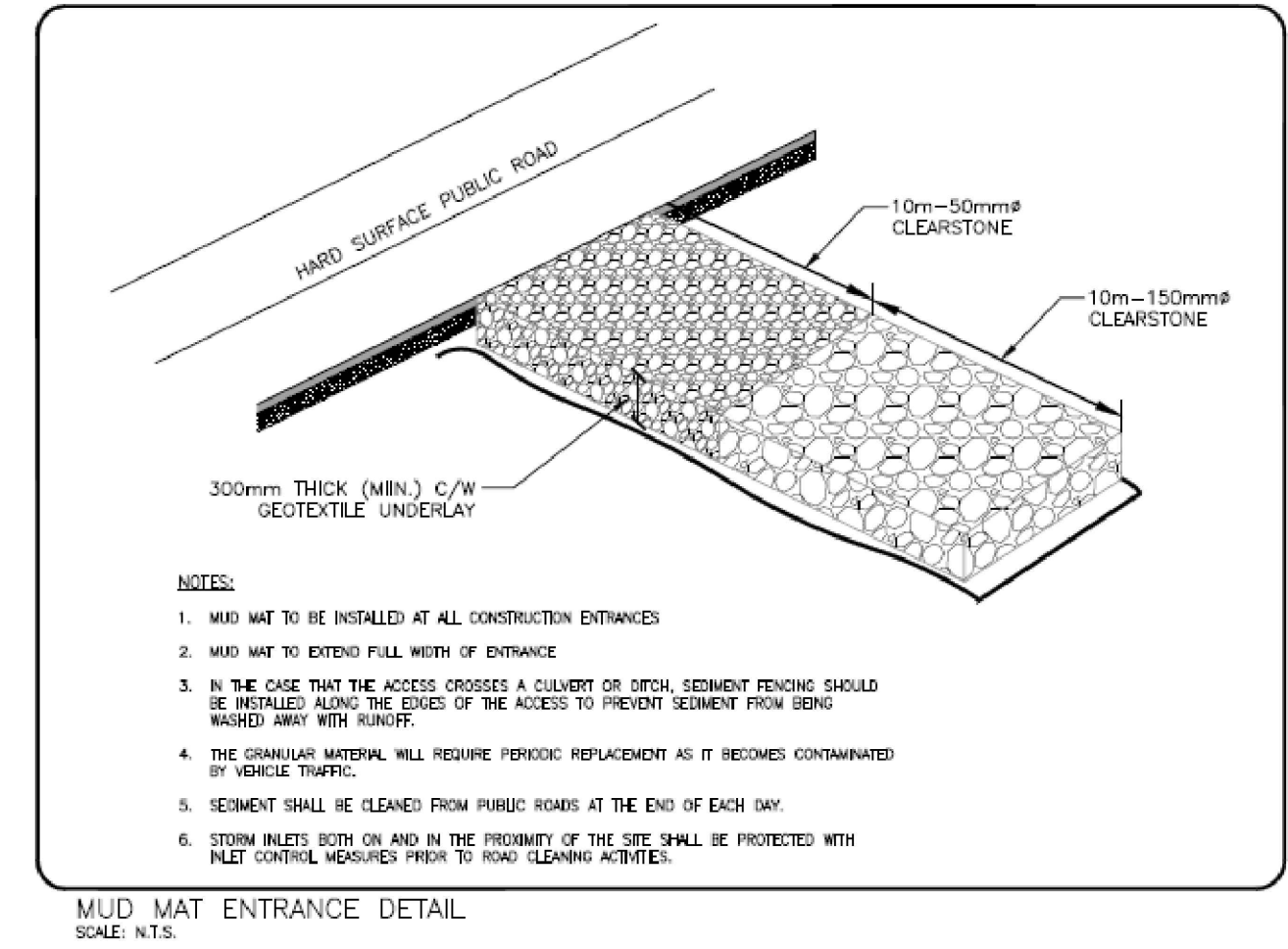
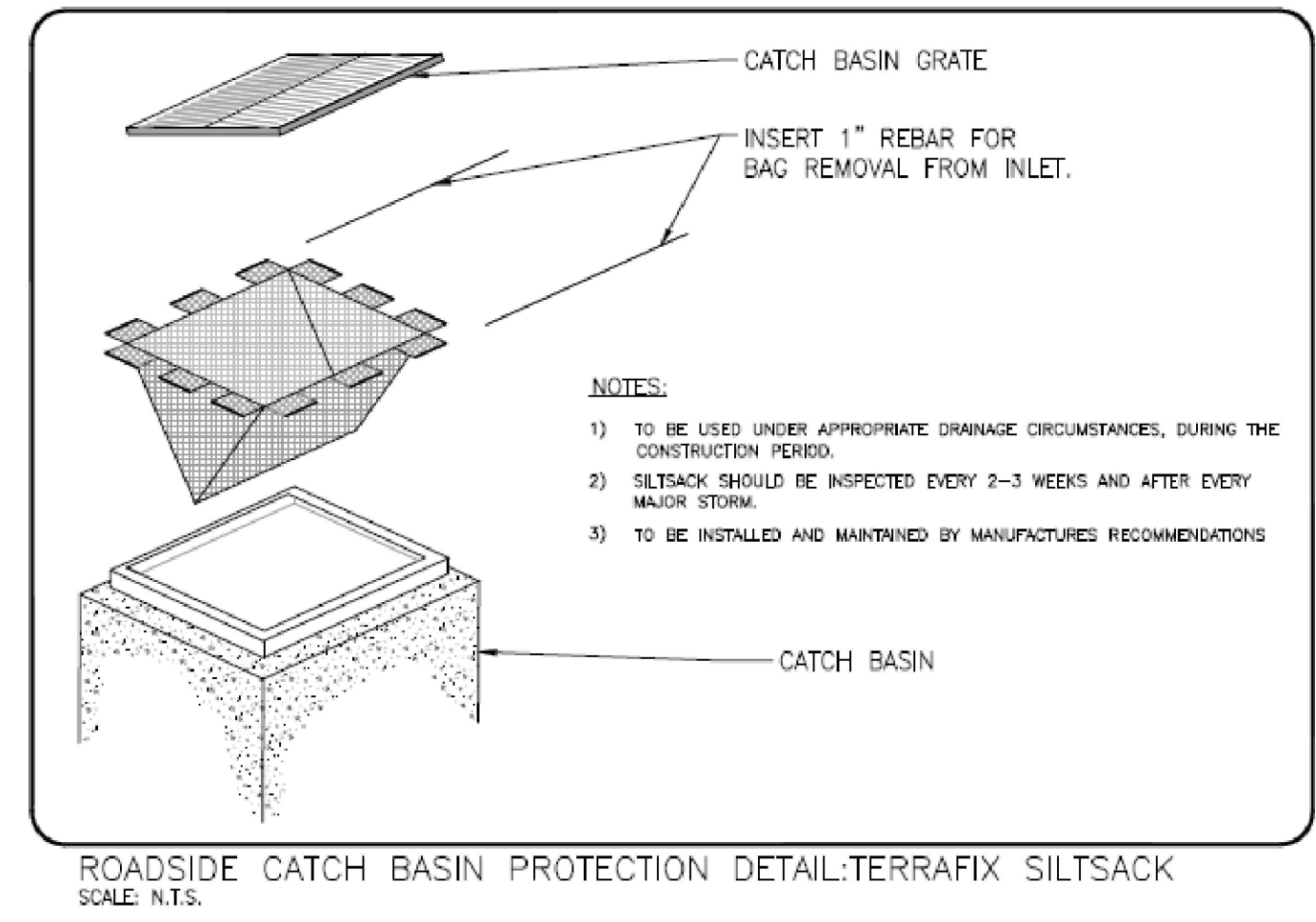
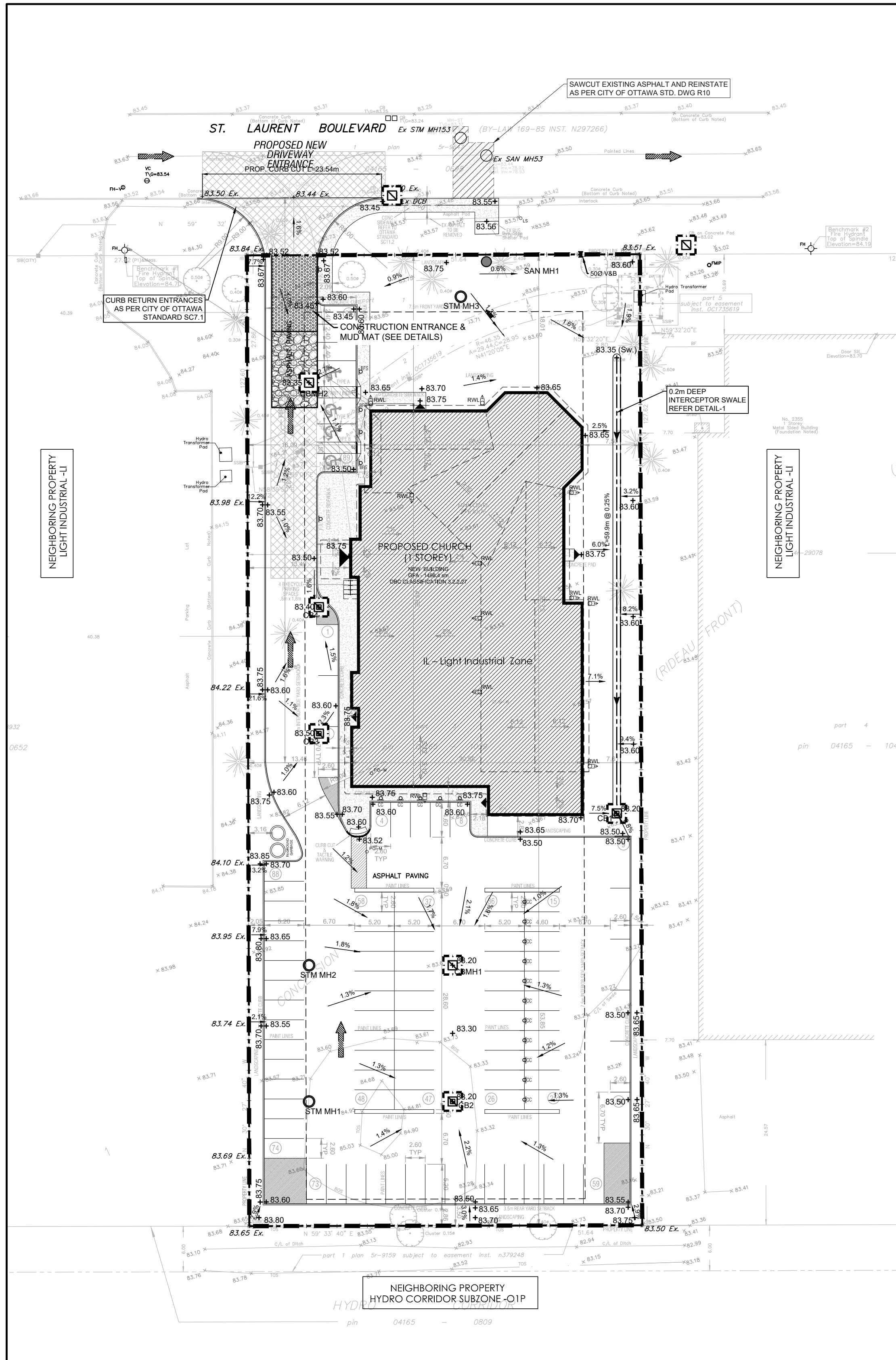
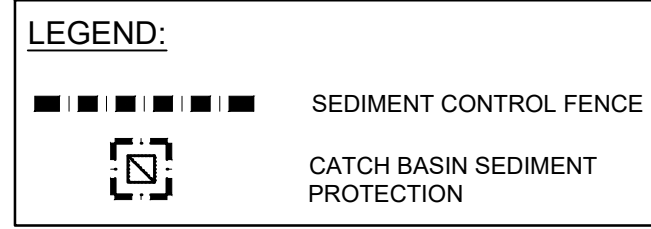


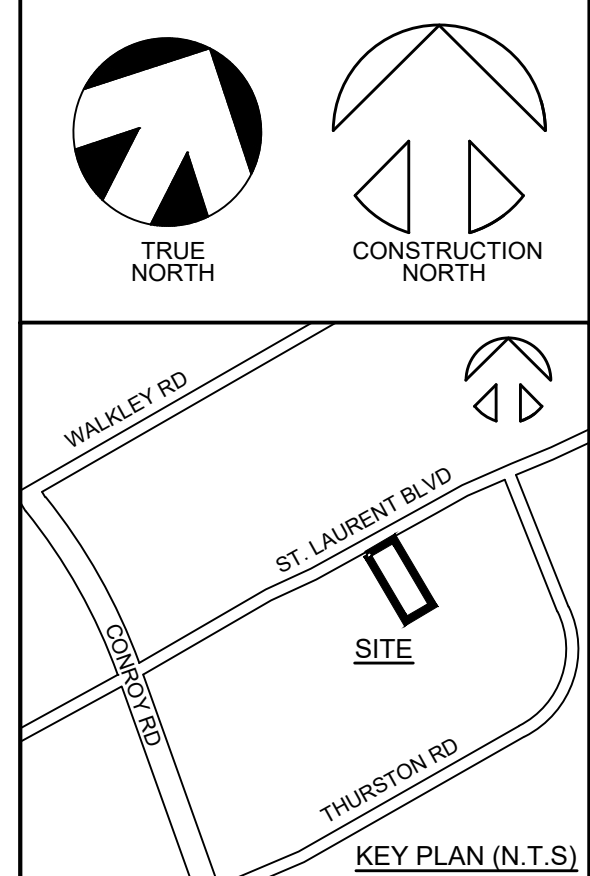
EROSION AND SEDIMENT CONTROL NOTES

1. THE CONTRACTOR SHALL IMPLEMENT BEST MANAGEMENT PRACTICES, TO PROVIDE FOR PROTECTION OF THE AREA DRAINAGE SYSTEM AND THE RECEIVING WATERCOURSE, DURING CONSTRUCTION ACTIVITIES. THIS INCLUDES LIMITING THE AMOUNT OF EXPOSED SOIL, USING FILTER CLOTH UNDER THE GRATES OF CATCHBASINS AND MANHOLES, AND INSTALLING SILT FENCES AND OTHER EFFECTIVE SEDIMENT TRAPS. THE CONTRACTOR ACKNOWLEDGES THAT FAILURE TO IMPLEMENT APPROPRIATE EROSION AND SEDIMENT CONTROL MEASURES MAY BE SUBJECT TO PENALTIES IMPOSED BY ANY APPLICABLE REGULATORY AGENCY.
2. THE SEDIMENT CONTROL MEASURES SHALL ONLY BE REMOVED WHEN, IN THE OPINION OF THE ENGINEER, THE MEASURES ARE NO LONGER REQUIRED. NO CONTROL MEASURES MAY BE PERMANENTLY REMOVED WITHOUT PRIOR AUTHORIZATION FROM THE ENGINEER.
3. REGULAR INSPECTION AND MAINTENANCE OF THE EROSION AND SEDIMENT MEASURES SHALL BE UNDERTAKEN. THE IMPLEMENTATION AND ADJUSTMENT AND/OR CORRECTIVE MAINTENANCE OF THE EROSION AND SEDIMENT MEASURES IS AN INTEGRAL PART OF THE PLAN AND MUST BE PERFORMED.
4. GEOTEXTILE FILTER FABRIC SHALL BE PLACED BETWEEN THE STRUCTURE FRAME AND COVER FOR ALL MANHOLES, CATCHBASINS, AND CATCHBASIN MANHOLES IN THE VICINITY OF WORK.
5. THE CONTRACTOR SHALL MAINTAIN ADJACENT ROADS IN A CLEAN CONDITION AT ALL TIMES.
6. PROVIDE MUD MATS AT SITE CONSTRUCTION ENTRANCE(S) AND EGRESS(S).



TOPOGRAPHICAL PLAN OF SURVEY
PART OF LOT 1
CONCESSION 5 (RIDEAU FRONT)
Geographic Township of Nepean
CITY OF OTTAWA
Surveyed by Annis, O'Sullivan, Volebek Ltd.
Plan Amended September 7, 2017 to illustrate additional services.

OWNERS	APPLICANT
OWNERS NAME The CornerStone House of Refuge Apostolic Church (CHORAC) ADDRESS 1196 Wellington St West, Ottawa, ON, K1Y 2Z5 (613) PHONE # 725-1432	REINDERS + LAW LTD. 64 ONTARIO STREET NORTH, MILTON ON L9T 2T1 P (905)457-1618 F (905)457-8852



no.	revisions	date	init.
2	ISSUED FOR APPROVAL	04/11/2023	YA
1	ISSUED FOR APPROVAL	12/13/2022	YA
0	ISSUED FOR APPROVAL	02/14/2022	YA

GENERAL NOTE:
THESE DRAWINGS ARE COPYRIGHT AND THE PROPERTY OF REINDERS + LAW LTD. THE DRAWINGS MAY NOT BE USED FOR CONSTRUCTION WITHOUT THE PERMISSION OF REINDERS + LAW LTD. AND UNLESS SEALED AND SIGNED BY THE ARCHITECT/ENGINEER REPRODUCTION OF THESE DRAWINGS WITHOUT THE CONSENT OF REINDERS + LAW LTD. IS STRICTLY PROHIBITED.
DO NOT SCALE THESE DRAWINGS. ANY ERROR OR DISCREPANCY IS TO BE REPORTED IMMEDIATELY TO: REINDERS + LAW LTD.

cod file 20037_SP3
date plotted 4/11/2023 plot scale 1:1



drawn	CC
designed	YA
reviewed	YA
date	4/11/2023
scale	AS SHOWN

project
CHORAC OTTAWA
2375 ST. LAURENT BLVD
OTTAWA, ON

drawing
EROSION AND SEDIMENT CONTROL PLAN, NOTES & DETAILS

PLAN#18738
007-12-22-0061

REINDERS + LAW
ARCHITECTURE. ENGINEERING
REINDERS + LAW LTD.
ARCHITECTURE. ENGINEERING
64 ONTARIO STREET NORTH
MILTON, ON L9T 2T1
T. 905.457.1618 F. 905.457.8852
EMAIL@REINDERS.CA WWW.REINDERS.CA

drawing no.	20037_SP5	rev. no.	2
-------------	-----------	----------	---

APPROVED
By Lily Xu at 3:27 pm, May 04, 2023

Lily Xu

LILY XU, MCIP, RPP
MANAGER, DEVELOPMENT REVIEW SOUTH
PLANNING, INFRASTRUCTURE & ECONOMIC
DEVELOPMENT DEPARTMENT, CITY OF OTTAWA