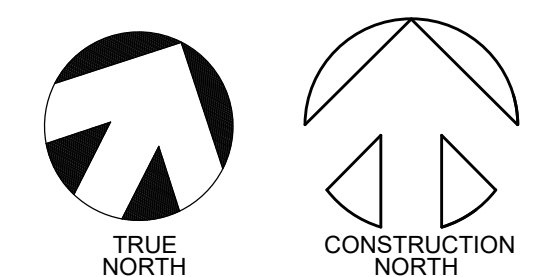
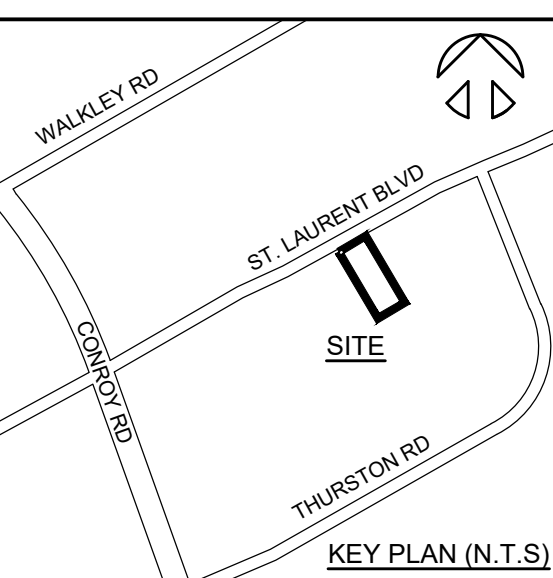


TOPOGRAPHICAL PLAN OF SURVEY  
 PART OF LOT 1  
 CONCESSION 5 (RIDEAU FRONT)  
 Geographic Township of Nepean  
 CITY OF OTTAWA  
 Surveyed by Annis, O'Sullivan, Vollebek Ltd.  
 Plan Amended September 7, 2017 to illustrate additional services.



OWNERS	APPLICANT
OWNERS NAME: The Carleton Place House of Refuge Apostolic Church (CHORAC) ADDRESS: 1196 Wellington St West, Ottawa, ON, K1Y 2Z5 (613) PHONE #: 725-1432	REINDERS + LAW LTD. 64 ONTARIO STREET NORTH, MILTON ON L9T 2T1 P (905)457-1618 F (905)457-8852



**LEGEND:**

- CATCHMENT AREA BOUNDARY
- CATCHMENT AREA No.
- CATCHMENT AREA IN HECTARES.
- WEIGHTED RUN-OFF COEFFICIENT

no.	revisions	date	init.
0	ISSUED FOR APPROVAL	10/12/2022	YA

**GENERAL NOTE:**  
 THESE DRAWINGS ARE COPYRIGHT AND THE PROPERTY OF REINDERS + LAW LTD. THE DRAWINGS MAY NOT BE USED FOR CONSTRUCTION WITHOUT THE PERMISSION OF REINDERS + LAW LTD. AND UNLESS SEALED AND SIGNED BY THE ARCHITECT/ENGINEER REPRODUCTION OF THESE DRAWINGS WITHOUT THE CONSENT OF REINDERS + LAW LTD. IS STRICTLY PROHIBITED.  
 DO NOT SCALE THESE DRAWINGS. ANY ERROR OR DISCREPANCY IS TO BE REPORTED IMMEDIATELY TO: REINDERS + LAW LTD.

cad file 20037\_DR  
 date plotted 12/7/2022 plot scale 1:1

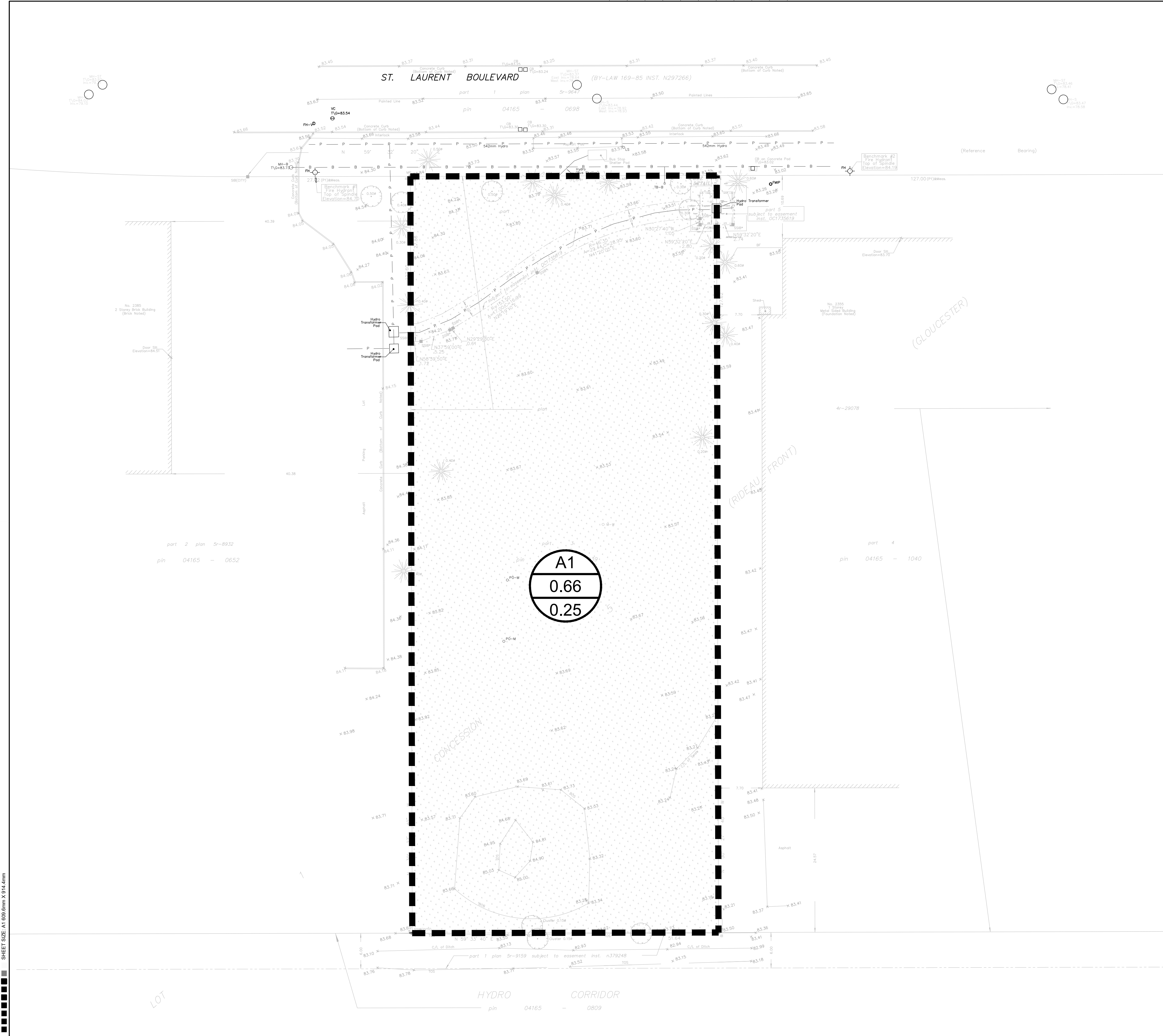
drawn	CC
designed	YA
reviewed	YA
date	12/7/2022
scale	1:300

project  
 CHORAC OTTAWA  
 2375 ST. LAURENT BLVD  
 OTTAWA, ON

drawing  
 PRE DEVELOPMENT  
 DRAINAGE PLAN

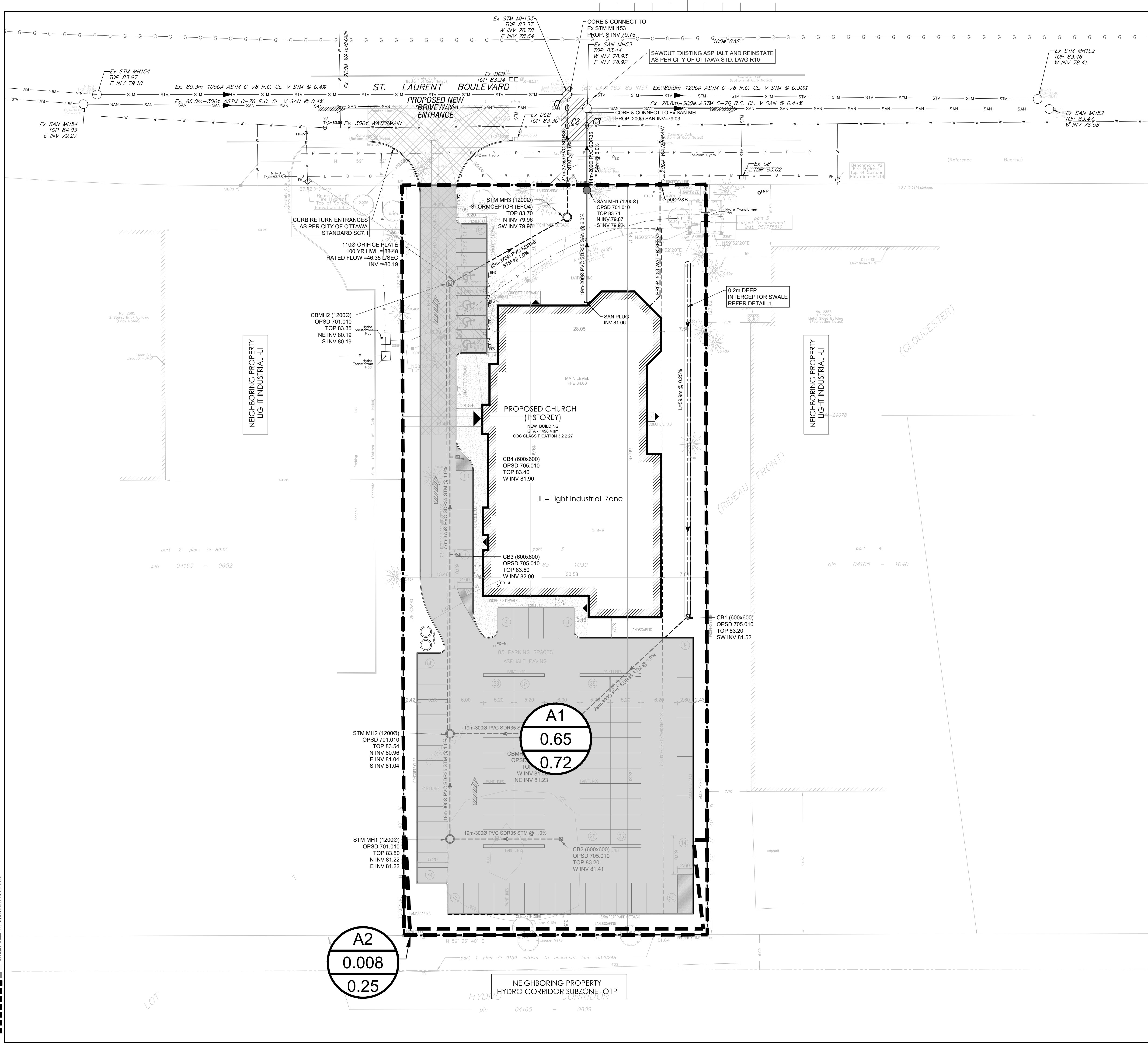
**REINDERS + LAW**  
 ARCHITECTURE. ENGINEERING  
 REINDERS + LAW LTD.  
 ARCHITECTURE. ENGINEERING  
 64 ONTARIO STREET NORTH  
 MILTON ON L9T 2T1  
 T. 905.457.1618 F. 905.457.8852  
 EMAIL@REINDERS.CA WWW.REINDERS.CA

drawing no.	20037_DR1	rev. no.	0
-------------	-----------	----------	---



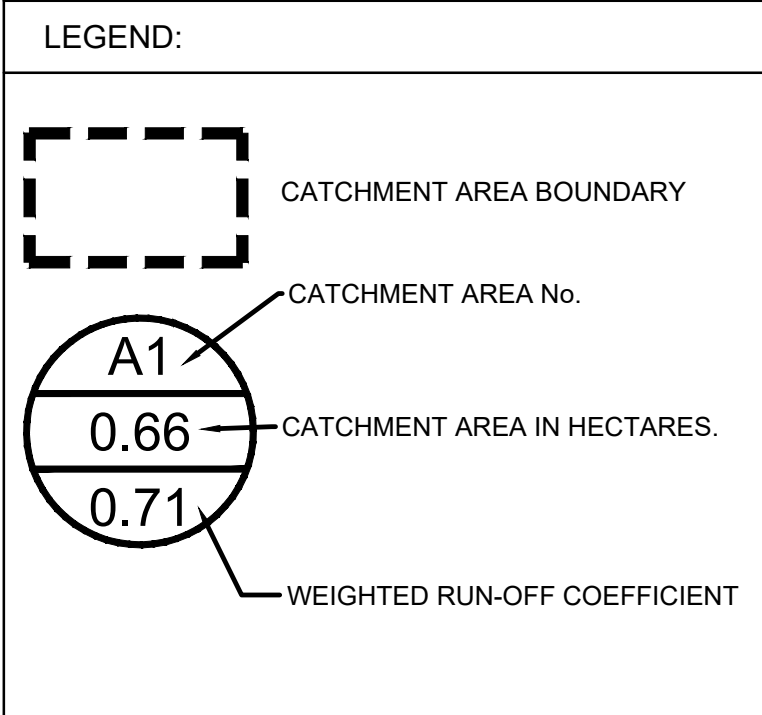
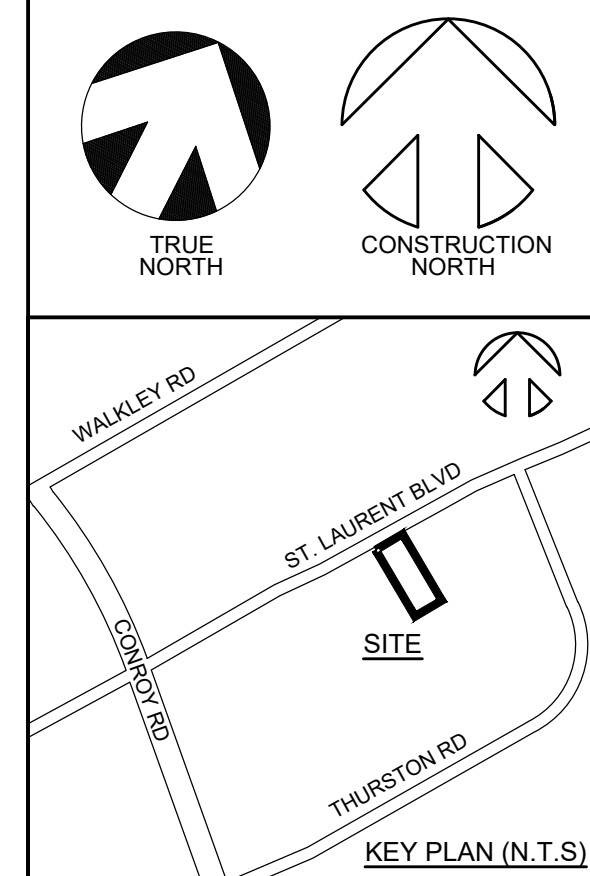
SHEET SIZE: A1 600.0mm X 914.4mm





TOPOGRAPHICAL PLAN OF SURVEY  
 PART OF LOT 1  
 CONCESSION 5 (RIDEAU FRONT)  
 Geographic Township of Nepean  
 CITY OF OTTAWA  
 Surveyed by Annis, O'Sullivan, Vollebek Ltd.  
 Plan Amended September 7, 2017 to illustrate additional services.

OWNERS	APPLICANT
OWNERS NAME: The CornerStone House of Refuge Apostolic Church (CHORAC) ADDRESS: 1196 Wellington St West, Ottawa, ON, K1Y 2Z5 (613) PHONE #: 725-1432	REINDERS + LAW LTD. 64 ONTARIO STREET NORTH, MILTON ON L9T 2T1 P (905)457-1618 F (905)457-8852



no.	revisions	date	INT.
1	ISSUED FOR APPROVAL	12/07/2022	YA
0	ISSUED FOR APPROVAL	02/06/2023	YA

GENERAL NOTE:  
 THESE DRAWINGS ARE COPYRIGHT AND THE PROPERTY OF REINDERS + LAW LTD. THE DRAWINGS MAY NOT BE USED FOR CONSTRUCTION WITHOUT THE PERMISSION OF REINDERS + LAW LTD. AND UNLESS SEALED AND SIGNED BY THE ARCHITECT/ENGINEER REPRODUCTION OF THESE DRAWINGS WITHOUT THE CONSENT OF REINDERS + LAW LTD. IS STRICTLY PROHIBITED.  
 DO NOT SCALE THESE DRAWINGS. ANY ERROR OR DISCREPANCY IS TO BE REPORTED IMMEDIATELY TO: REINDERS + LAW LTD.

cad file 20037\_DR  
 date plotted 2/6/2023 plot scale 1:1

drawn	CC
designed	YA
reviewed	YA
date	2/6/2023
scale	1:300

project  
 CHORAC OTTAWA  
 2375 ST. LAURENT BLVD  
 OTTAWA, ON

drawing  
 POST DEVELOPMENT  
 DRAINAGE PLAN

**REINDERS + LAW**  
 ARCHITECTURE, ENGINEERING  
 REINDERS + LAW LTD.  
 ARCHITECTURE, ENGINEERING  
 64 ONTARIO STREET NORTH  
 MILTON ON L9T 2T1  
 T. 905.457.1618 F. 905.457.8852  
 EMAIL: REINDERS.CA WWW.REINDERS.CA

drawing no.	rev. no.
20037_DR2	1

SHEET SIZE: A1 600.0mm X 914.4mm