

- LEGEND**
- EXISTING TREE TO REMAIN, SYMBOL SIZE REFLECTS CRZ
  - EXISTING TREE TO REMOVE, SYMBOL SIZE REFLECTS CRZ
  - TREE PROTECTION FENCE
- TREE PROTECTION**
- Implement the following protection measures for retained trees, both on site and on adjacent sites, prior to any work activity, including tree removal. Maintain tree protection fence in place and in good condition for the duration of site works:
1. The Landscape Architect or Certified Arborist is to determine the location of the tree protection fencing and detail it on any associated plans for the site (e.g. tree conservation report, tree disclosure report, etc.).
  2. Under the guidance of a Landscape Architect or Certified Arborist, erect a fence at the critical root zone (CRZ) of trees. Diameter at breast height (DBH) is the trunk diameter measured at 1.3m height on the tree trunk. The CRZ is calculated as DBH x 10. Refer to the Tree Protection Fence detail.
  3. Refer to the Tree Protection Plan for fence location. City Forestry Staff are to approve both the plan and the installed fence prior to work commencement.
  4. Do not place any material or equipment within 2m of the CRZ of any tree, including outhouses.
  5. Do not attach any signs, notices, or posters to any tree.
  6. Do not disturb, raise, or lower the existing grade within the CRZ without approval.
  7. Only tunnel or bore when digging within the CRZ of a tree. Hand work only where required within the CRZ, absolutely no machinery permitted.
  8. Do not damage the root system, trunk, or branches, or any tree.
  9. Do not extend hard surface or significantly change landscaping.
  10. Ensure that exhaust fumes from all equipment are directed away from any tree canopy.
  11. When trees marked for removal overlap with the CRZ of trees marked for preservation: cut roots at the edge of the CRZ and grind down stumps after tree removals, do not pull out stumps. Ensure there is no root pulling or disturbance of the ground within the CRZ.
  12. Prior to work taking place, notify and consult the Landscape Architect and City Forestry Staff if roots must be cut. Roots 20mm or larger should be cut at right angles with clean, sharp horticultural tools without tearing, crushing, or pulling. Refer to City of Ottawa Specification S.P. F-8011 Tree Protection, Excavation of Root Zone.
  13. If roots must be uncovered overnight, contractor is to place wet burlap over the uncovered roots of the tree.
  14. If damaged or objectionable branches are observed, consult the Landscape Architect, before any work is conducted. Do not prune leaders. Do not prune more than 1/4 of crown.
  15. Set up a water and fertilizing program, if trees are being affected by site works, to the satisfaction of the Landscape Architect.
  16. The Landscape Architect is to prescribe mitigation measures if the protected fenced area must be reduced to facilitate construction. Measures may include the placement of plywood, wood chips, or steel plating over the roots for protection. City Forestry Staff are to approve said measures prior to fence movement.
  17. City of Ottawa By-law: Protects municipal trees and municipal natural areas in the City of Ottawa and trees on private property in the urban area of the City of Ottawa (2020-340).

- GENERAL**
1. Read and interpret this drawing/ drawing set in conjunction with all the contract details and specifications, including related civil, utility, structural, architectural, mechanical, electrical, environmental, geotechnical, and survey information.
  2. The Contractor is to determine the exact location, size, material, and elevation of all existing utilities prior to commencing construction. Protect and assume responsibility for all existing utilities regardless of being shown on the drawings.
  3. It is essential to use the plans and details in conjunction with the specifications and notes.
  4. Do not scale drawings. Work to dimensions only.
  5. Protect all existing and retained vegetation for the duration of construction according to the contract details and specifications.
  6. Reinstatement all areas and items damaged or disturbed, beyond the Limit of Work, because of construction activities, including but not limited to construction staging areas, haul roads, stockpile areas, etc. to the satisfaction of the Consultant. Unless otherwise noted, Contractor is to reinstate all areas to pre-construction condition or better to the satisfaction of the Contract Administrator.

No.	Botanical Name	Common Name	DBH (cm)	CRZ (m)	Condition	Remarks	Recomm.
1	Thuja occidentalis (Hedge)	Hedge of Eastern White Cedar	Avg 14	-	G	On property line.	Remove
2	Prunus ssp	Cherry species	16.0	1.60	G	On adjacent property.	PROTECT
3	Fraxinus ssp	Ash species	14.0	1.40	VP	Dead or nearly dead. On adjacent property/property line.	Remove
4	Fraxinus ssp	Ash species	10.0	1.00	P	On adjacent property/property line.	Remove
5	Acer negundo	Manitoba Maple	10.0	1.00	G	On adjacent property/property line.	Remove
6	Ulmus ssp	Elm species	13.0	1.30	G	On adjacent property/property line.	Remove
7	Robinia pseudoacacia	Black Locust	12.0	1.20	G	Considered invasive species. On adjacent property/property line.	Remove
8	Robinia pseudoacacia	Black Locust	14.0	1.40	P	Considered invasive species. On adjacent property/property line. Growing into/around chain link fence.	Remove
9	Acer platanoides	Norway Maple	22.0	2.20	G	On adjacent property.	PROTECT
10	Acer platanoides	Norway Maple	14.0	1.40	G	On adjacent property.	PROTECT
11	Thuja occidentalis	Eastern White Cedar	14.0	1.40	G	On adjacent property.	PROTECT
12	Ulmus ssp	Elm species	38.0	3.80	P	On adjacent property.	PROTECT
13	Acer platanoides	Norway Maple	48.0	4.80	G	On adjacent property.	PROTECT

**Legend**

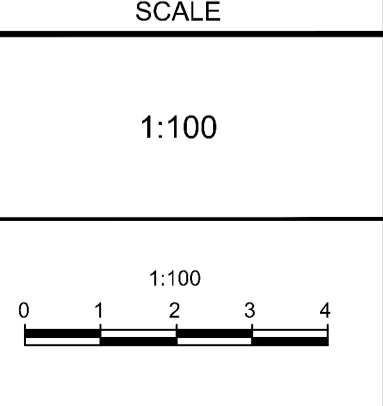
F	Fair	Remove	Remove due to tree health, invasive status or conflict with construction.
P	Poor	PROTECT	Protect as per detail D1 and related notes.
VP	Very Poor		

**NOTE:**  
THE POSITION OF ALL POLE LINES, CONDUITS, WATERMANS, SEWERS AND OTHER UNDERGROUND AND OVERGROUND UTILITIES AND STRUCTURES IS NOT NECESSARILY SHOWN ON THE CONTRACT DRAWINGS, AND WHERE SHOWN, THE ACCURACY OF THE POSITION OF SUCH UTILITIES AND STRUCTURES IS NOT GUARANTEED. BEFORE STARTING WORK, DETERMINE THE EXACT LOCATION OF ALL SUCH UTILITIES AND STRUCTURES AND ASSUME ALL LIABILITY FOR DAMAGE TO THEM.

Owner:  
Acul ENTERPRISES INC.

**NOT FOR CONSTRUCTION**

No.	REVISION	DATE	BY
4.	REVISED PER CITY COMMENTS	JAN 18/24	RGJ
3.	REVISED PER CITY COMMENTS	OCT 30/23	RGJ
2.	ISSUED FOR CLIENT REVIEW	OCT 11/23	RGJ
1.	ISSUED FOR SPA	JUNE 9/23	RGJ



DESIGN	JK
CHECKED	RGJ
DRAWN	JK
CHECKED	RGJ
APPROVED	RGJ

**FOR REVIEW ONLY**

**NOVATECH**  
Engineers, Planners & Landscape Architects  
Suite 200, 240 Michael Cowpland Drive  
Ottawa, Ontario, Canada K2M 1P6  
Telephone: (613) 254-9643  
Facsimile: (613) 254-5867  
Website: www.novatech-eng.com

LOCATION  
CITY OF OTTAWA  
1240 CARLING AVENUE

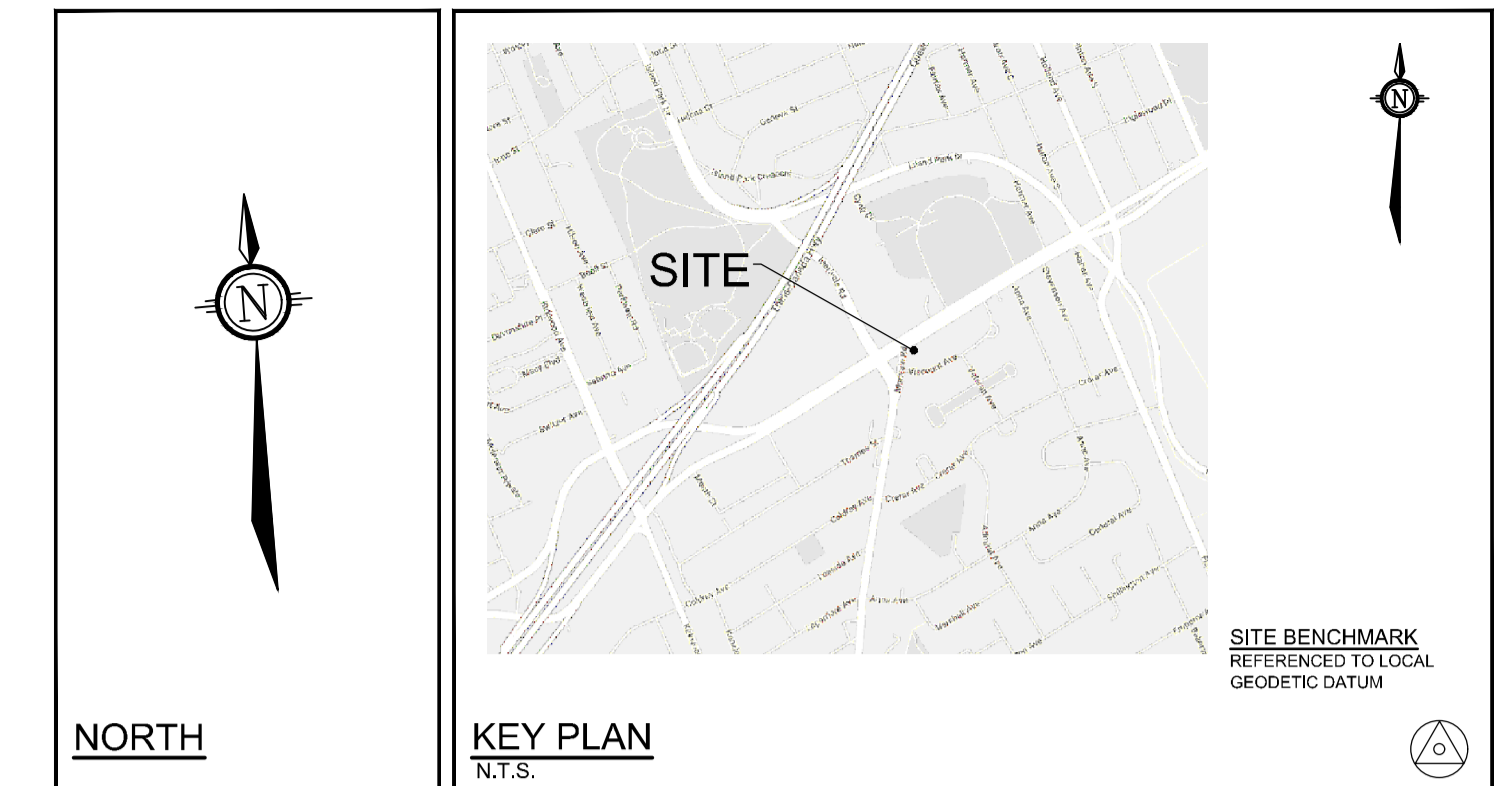
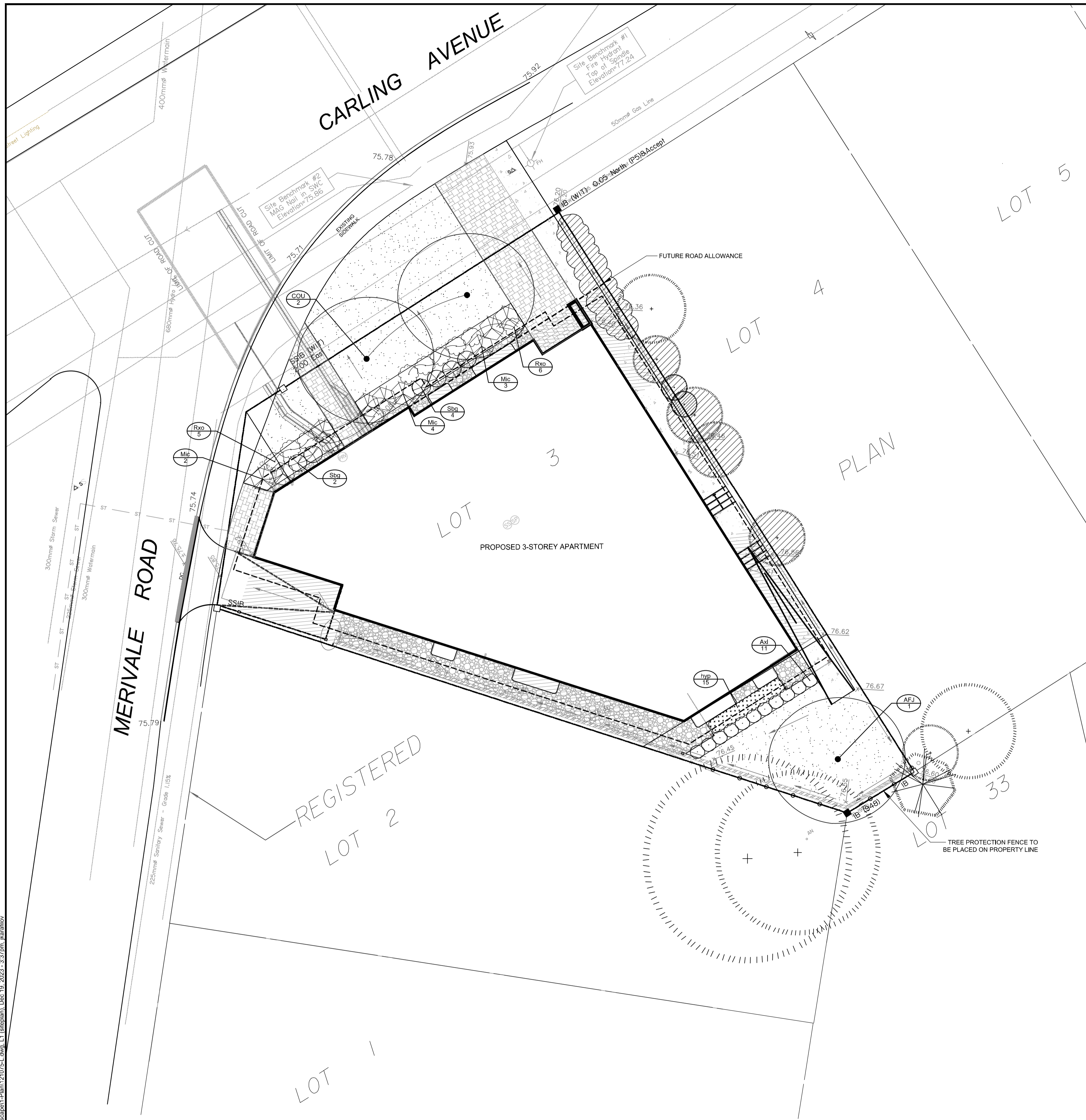
DRAWING NAME  
**TREE CONSERVATION REPORT**

PROJECT NO.  
121075

REV # 4

DRAWING NO.  
121075-TCR

I:\projects\2023\121075\CAD\Landscape\1-Plan\121075-L.dwg, TCR, Dec 19, 2023 - 3:37pm, jauraffo



**LEGEND**

	PROPERTY LIMIT
	PROPOSED CONCRETE
	PROPOSED PAVERS
	RIVER STONE
	SOD
	ORNAMENTAL GRASSES
	PROPOSED DECIDUOUS TREE
	PROPOSED SHRUBS
	SPECIES (SEE PLANT LIST) QUANTITY
	LIMIT OF EXCAVATION
	BALCONY ABOVE

- GENERAL**
- Read and interpret this drawing/ drawing set in conjunction with all the contract details and specifications, including related civil, utility, structural, architectural, mechanical, electrical, environmental, geotechnical, and survey information.
  - The Contractor is to determine the exact location, size, material, and elevation of all existing utilities prior to commencing construction. Protect and assume responsibility for all existing utilities regardless of being shown on the drawings.
  - It is essential to use the plans and details in conjunction with the specifications and notes.
  - Do not scale drawings. Work to dimensions only.
  - Protect all existing and retained vegetation for the duration of construction according to the contract details and specifications.
  - Reinstate all areas and items damaged or disturbed, beyond the Limit of Work, because of construction activities, including but not limited to construction staging areas, haul roads, stockpile areas, etc. to the satisfaction of the Consultant. Unless otherwise noted, Contractor is to reinstate all areas to pre-construction condition or better to the satisfaction of the Contract Administrator.

- PLANTING**
- Plant material to be No. 1 Grade and is to comply with Canadian Standards for Nursery Stock (latest edition) published by the Canadian Nursery Landscape Association. Use structurally sound plant material with strong fibrous root system free of disease, defects, and injuries. Use trees with straight trunks, well and characteristically branched for species. Obtain approval from consultant of plant material at source prior to digging. All trees and shrubs to be container grown, potted, W/B or B/B, as indicated on Plant List. Bare root plants are only acceptable for certain species and as approved by the Landscape Architect.
  - Plant material substitutions are not permitted without the written approval from the Consultant, with 48 hours notice, prior to shipping plant material.
  - Plant locations are schematic / approximate only. Contractor is to stake out locations on site for approval by the Landscape Architect prior to installation. The illustrated number of plants shown in the Planting Plan supersedes the estimated number in the Plant List. Contractor to report any discrepancies to the Landscape Architect prior to installation. Contractor will assume full responsibility if the Landscape Architect is not notified.
  - Ensure trees are thoroughly watered following planting. Monitor material and ensure adequate moisture until acceptance.
  - In heavy clay or poorly drained soils, set root ball with root collar 75-100mm higher than finished grade.
  - Approved topsoil depths are as follows:
    - Plant Beds - 450mm continuous depth. Applies to shrubs, perennials, vines, and groundcovers.
    - Sod/ Seed Areas - 100mm depth.
  - Sod to be No. 1 Kentucky Bluegrass Sod grown from minimum mixture of 3 Kentucky Bluegrass cultivars. Quality and source are to comply with Canadian Standards for Nursery Stock, Section 17, (latest edition) published by the Canadian Nursery Landscape Nursery Landscape Association.
  - Where applicable, for any plant areas with a mix of species/ cultivars notes, Contractor is to cluster like plants in groups of 3-5 and evenly distribute these in the noted area.

- CITY DETAILS**
- Related details from City of Ottawa Standard Tender Documents Volume No. 2 Standard Detail Drawings.
- SC4. Typical Concrete Sidewalk in Boulevard  
SC5. Sidewalk Construction Joints
- NOVATECH DETAILS**
- Found on Sheet L2.
- D1. Standard Deciduous Tree Planting  
D2. Shrub and Perennial Planting  
D3. Tree Protection Fence

**PLANT LIST**

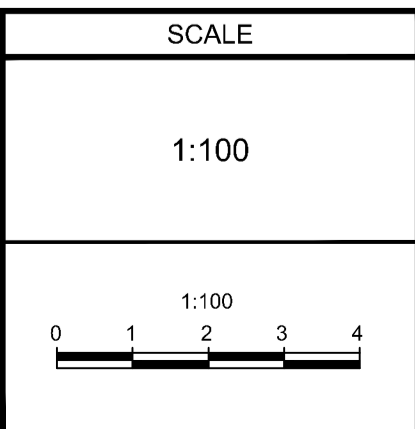
121075 - Plant List						
KEY	QTY	BOTANICAL NAME	COMMON NAME	SIZE	COND	SPACING
<b>Deciduous Trees</b>						
AFJ	1	<i>Acer x freemanii 'Jeffersred'</i>	Autumn Blaze Maple	50mm Cal	WB	As Shown
COU	2	<i>Celtis occidentalis 'Ultra'</i>	Ultra Hackberry	50mm Cal	WB	As Shown
<b>Coniferous Shrubs</b>						
Mc	9	<i>Microbiota decussata 'Prides'</i>	Celtic Pride Siberian Cypress	50cm Spr	PT	As Shown
<b>Deciduous Shrubs</b>						
Axl	11	<i>Aronia x Low Scape Mound (UCONNAM165)</i>	Low Scape Mound Chokeberry	40cm Ht	PT	As Shown
Rxo	11	<i>Rosa x 'Italian Ice'</i>	Oso Easy Italian Ice Rose	50cm Ht.	PT	As Shown
Sbg	6	<i>Spiraea betulifolia 'Glow Girl' (Tor Gold)</i>	Glow Girl Birchleaf Spirea	60cm Ht	PT	As Shown
<b>Ornamental Grasses</b>						
hyp	15	<i>Hystrix patula</i>	Bottlebrush Grass	1g	PT	45cm O.C

**NOTE:**  
THE POSITION OF ALL POLE LINES, CONDUITS, WATERMANS, SEWERS AND OTHER UNDERGROUND AND OVERGROUND UTILITIES AND STRUCTURES IS NOT NECESSARILY SHOWN ON THE CONTRACT DRAWINGS, AND WHERE SHOWN, THE ACCURACY OF THE POSITION OF SUCH UTILITIES AND STRUCTURES IS NOT GUARANTEED. BEFORE STARTING WORK, DETERMINE THE EXACT LOCATION OF ALL SUCH UTILITIES AND STRUCTURES AND ASSUME ALL LIABILITY FOR DAMAGE TO THEM.

Owner:  
Acul ENTERPRISES INC.

**NOT FOR CONSTRUCTION**

No.	REVISION	DATE	BY
3.	REVISED PER CITY COMMENTS	JAN 18/24	RGJ
2.	REVISED PER CITY COMMENTS	OCT 30/23	RGJ
1.	ISSUED FOR SPA	JUNE 9/23	RGJ



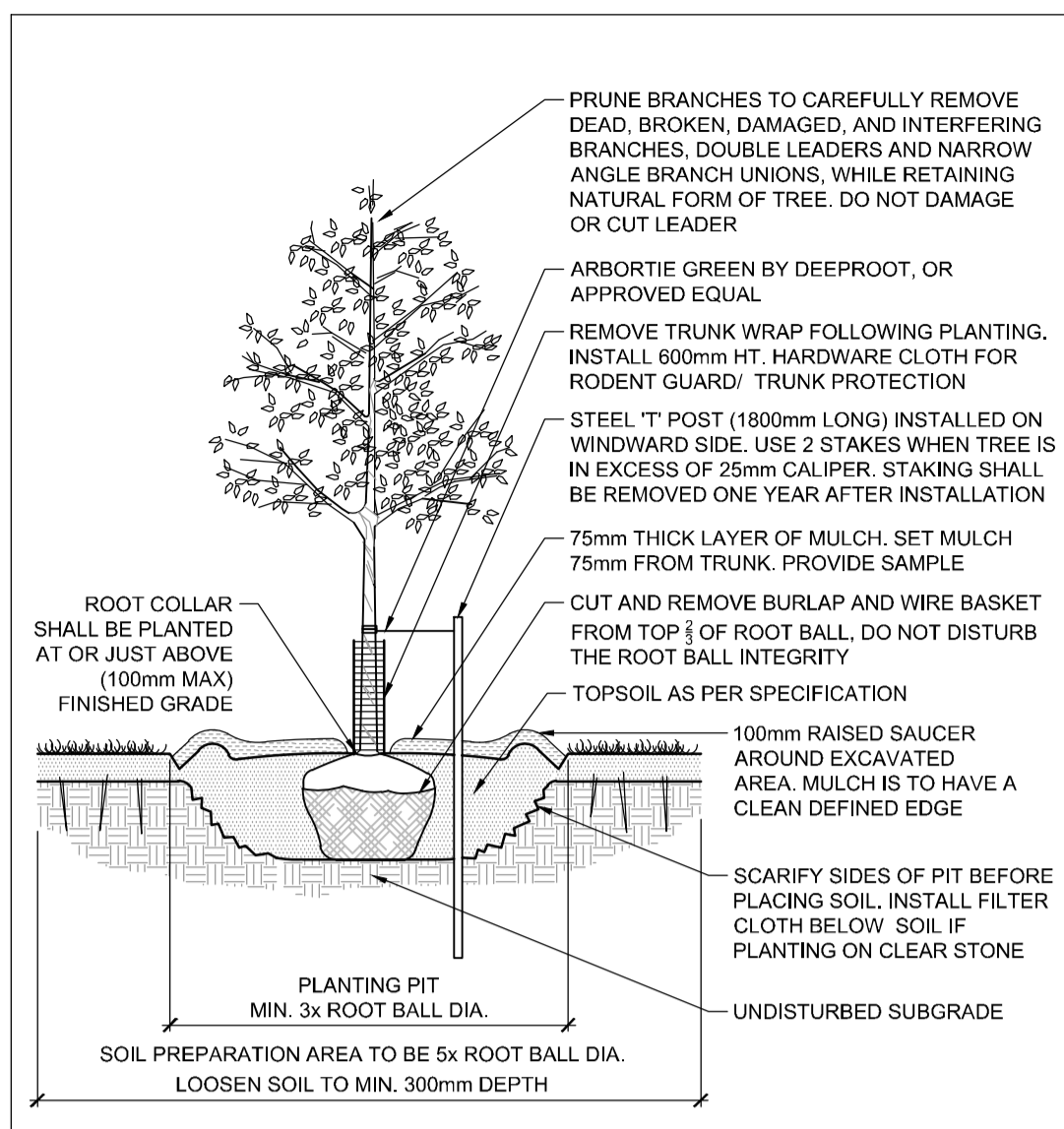
DESIGN	MEL
CHECKED	RGJ
DRAWN	MEL
CHECKED	RGJ
APPROVED	RGJ

**FOR REVIEW ONLY**

**NOVATECH**  
Engineers, Planners & Landscape Architects  
Suite 200, 240 Michael Cowpland Drive  
Ottawa, Ontario, Canada K2M 1P6  
Telephone: (613) 254-9643  
Facsimile: (613) 254-5867  
Website: www.novatech-eng.com

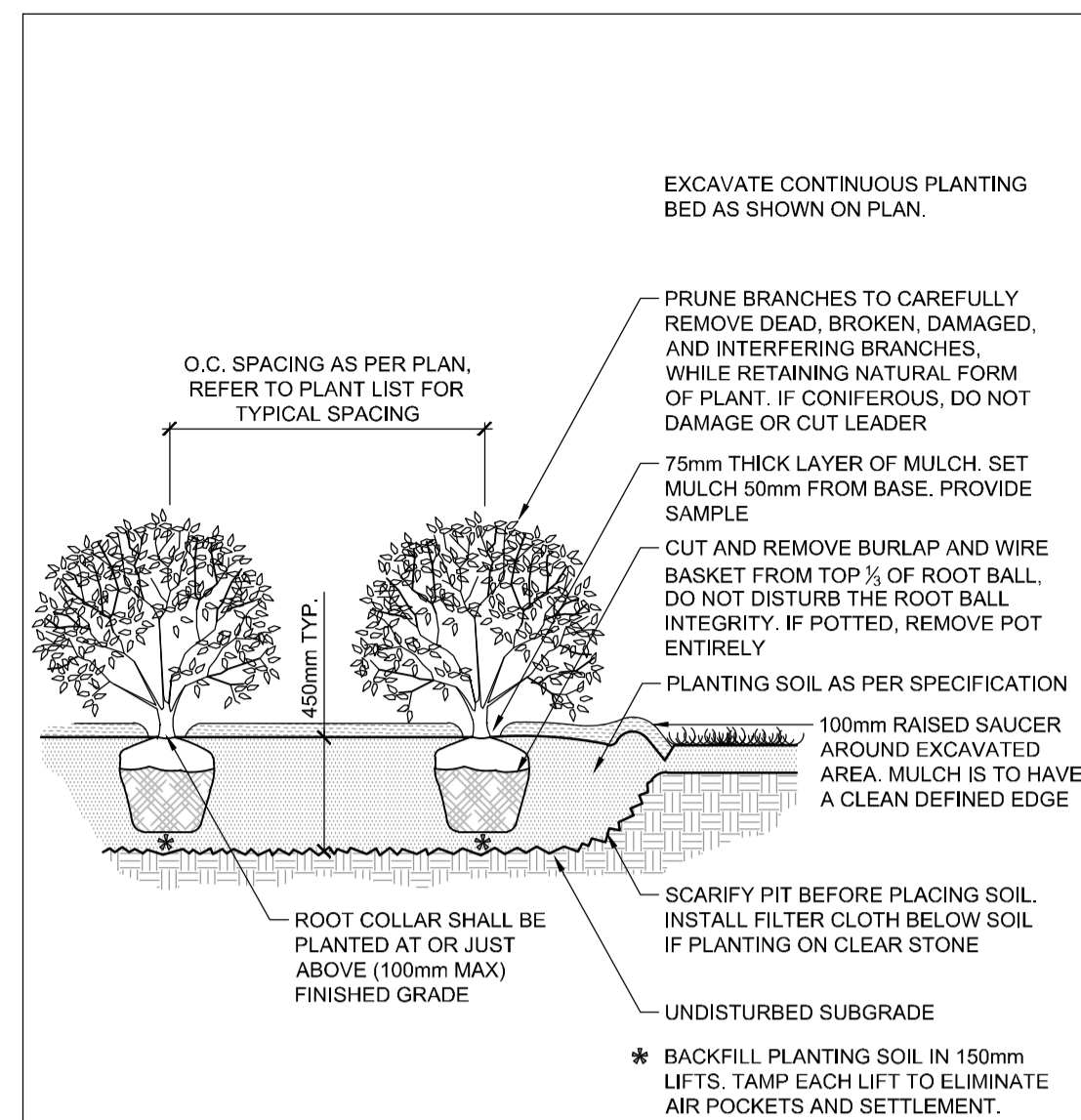
LOCATION CITY OF OTTAWA 1240 CARLING AVENUE	PROJECT No. 121075-00
DRAWING NAME LANDSCAPE PLAN	REV # REV # 3
	DRAWING No. 121075-L

Novatech/2018/Novatech/2024/121075/CAD/Landscape/1-Plan/121075-L.dwg, L1 (alegria), Dec. 19, 2023, 3:37pm, karalioz



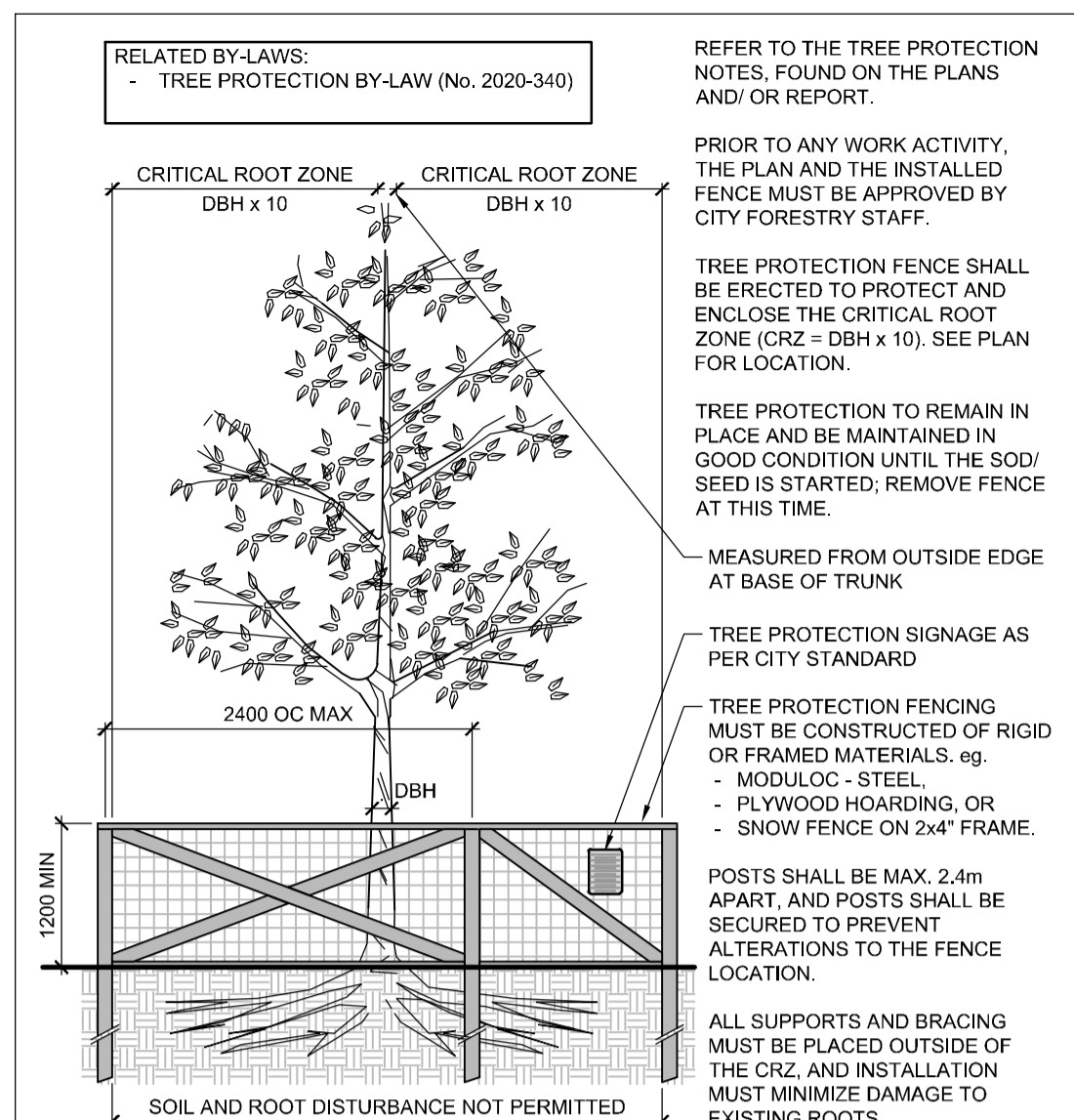
STANDARD DECIDUOUS TREE PLANTING

D1



SHRUB AND PERENNIAL PLANTING

D2



TREE PROTECTION FENCE

D3

I:\projects\2018\m002\2021\121075\CAD\Landscape\1-Plan\121075-L1.dwg, L2, Dec 19, 2023, 3:37pm, kkanaflyov

**NOTE:**  
THE POSITION OF ALL POLE LINES, CONDUITS, WATERMANS, SEWERS AND OTHER UNDERGROUND AND OVERGROUND UTILITIES AND STRUCTURES IS NOT NECESSARILY SHOWN ON THE CONTRACT DRAWINGS, AND WHERE SHOWN, THE ACCURACY OF THE POSITION OF SUCH UTILITIES AND STRUCTURES IS NOT GUARANTEED, BEFORE STARTING WORK, DETERMINE THE EXACT LOCATION OF ALL SUCH UTILITIES AND STRUCTURES AND ASSUME ALL LIABILITY FOR DAMAGE TO THEM.

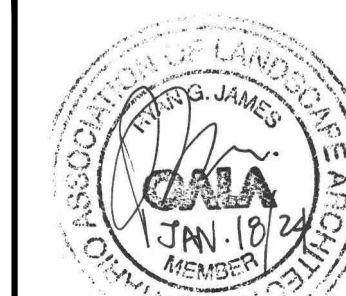
Owner:  
AcuB ENTERPRISES INC.

**NOT FOR CONSTRUCTION**

No.	REVISION	DATE	BY
3.	REVISED PER CITY COMMENTS	JAN 18/24	RGJ
2.	REVISED PER CITY COMMENTS	OCT 30/23	RGJ
1.	ISSUED FOR SPA	JUNE 9/23	RGJ

SCALE	DESIGN
	MEL
	CHECKED RGJ
	DRAWN MEL
	CHECKED RGJ
	APPROVED RGJ

**FOR REVIEW ONLY**



**NOVATECH**  
Engineers, Planners & Landscape Architects  
Suite 200, 240 Michael Cowpland Drive  
Ottawa, Ontario, Canada K2M 1P6  
Telephone (613) 254-9643  
Facsimile (613) 254-5867  
Website www.novatech-eng.com

LOCATION  
CITY OF OTTAWA  
1240 CARLING AVENUE

DRAWING NAME  
DETAILS

PROJECT No.	121075-00
REV	REV # 3
DRAWING No.	121075-L2

PL-0017-010-01-00000000