



**LEGEND**

- MS-1 PREFINISHED VERTICAL METAL SIDING TYPE 1 - IDEAL ROOFING HERITAGE SERIES - REGENT GRAY
- MS-2 PREFINISHED VERTICAL METAL SIDING TYPE 2 - IDEAL ROOFING HERITAGE SERIES - BLACK MICA
- MF-1 PREFINISHED METAL FLASHING TYPE 1 - TO MATCH REGENT GRAY
- MF-2 PREFINISHED METAL FLASHING TYPE 2 - TO MATCH BLACK MICA
- HP-1 HARDIE PANEL MAGNOLIA COLLECTION - COLOUR: MIDNIGHT SOOT
- BV-1 BRICK VENEER TYPE 1 - MERIDIAN BRICK - WAKEFIELD BORDEAU
- BSC-1 BRICK SOLIDER COURSE TYPE 1 - MERIDIAN BRICK - WAKEFIELD BORDEAU
- BLV-1 BLOCK VENEER TYPE 1 BRAMPTON BRICK - FINESSE MINERAL GRAY, SAUVIE
- PC-1 PRECAST CONCRETE SILL BRAMPTON BRICK - FINESSE MINERAL GRAY, SAUVIE
- PC-2 PRECAST CONCRETE CAP BRAMPTON BRICK - FINESSE MINERAL GRAY, SAUVIE
- CP CEMENT PARING
- W1 WINDOW TYPE
- D1 EXTERIOR DOOR TYPE
- SC DENOTES OPERABLE WINDOW
- SC OVER FLOW SCUPPER SEE ROOF PLAN
- CJ MASONRY CONTROL JOINT
- LF LIGHT FIXTURE - REFER TO ELEC
- GR CUSTOM POWDER COATED STEEL GUARD FRAME & PERFORATED STEEL SCREEN
- SO-1 PRE-FINISHED METAL SOFFIT c/w VENT STRIPS, COLOUR TO MATCH FASCIA.
- SO-2 CLEAR CEDAR SOFFIT c/w VENT STRIPS, COLOUR TO MATCH FINISH, COLOUR TBD.

**GENERAL NOTES:**  
 REFER TO CIVIL DRAWINGS FOR GRADING ELEVATIONS  
 REFER TO SPEC SECTION 09 00 02 EXTERIOR FINISHES COLOR LEGEND FOR FULL MATERIALS DESCRIPTION

no.	date	revision
10	2024-01-05	ISSUED FOR SITE PLAN APPROVAL
9	2023-12-22	ISSUED FOR TENDER
8	2023-12-12	ISSUED ZONING DEFICIENCY RESPONSE
7	2023-12-08	ISSUED FOR TENDER COORDINATION
6	2023-11-09	ISSUED FOR BUILDING PERMIT
5	2023-09-14	ISSUED TO LIGHTING CONSULTANT
4	2023-09-11	ISSUED FOR CONSULTANT COORDINATION
3	2023-07-13	RE-LABELLING FOR exp
2	2023-06-28	RE-ISSUED FOR ENERGY MODELING
1	2023-06-23	ISSUED FOR ENERGY MODELING

It is the responsibility of the appropriate contractor to check and verify all dimensions on site and report all errors and/or omissions to the architect.

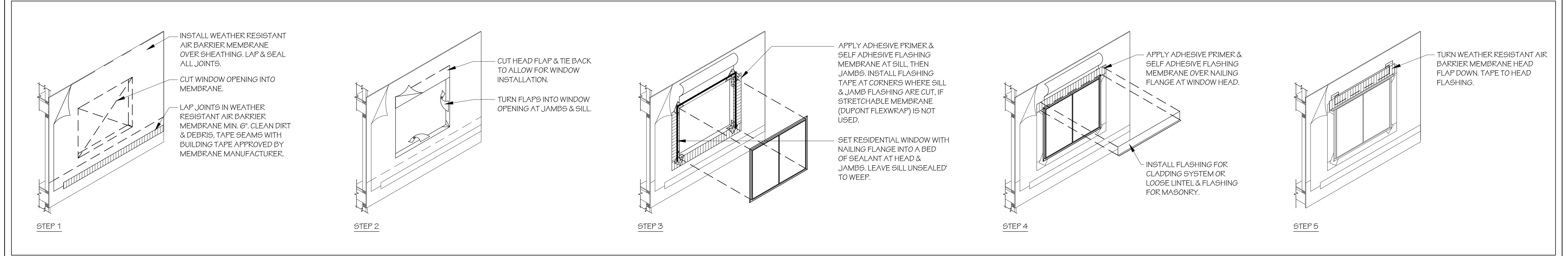
All contractors must comply with all pertinent codes and by-laws.

Do not scale drawings.

This drawing may not be used for construction until signed.

Copyright reserved.

1 SOUTH ELEVATION  
 SCALE: 1/4"=1'-0"



2 TYPICAL WINDOW PENETRATION FLASHING INSULATION DETAIL  
 SCALE: N.T.S.

**Hobin Architecture Incorporated**  
 63 Pamela Street  
 Ottawa, Ontario  
 Canada K1S 3K7  
 T: 613-238-7200  
 F: 613-238-2005  
 E: info@hobinarc.com  
 hobinarc.com

project title  
**LARCH APARTMENTS**  
15 LARCH ST, OTTAWA, ONTARIO

drawing title  
**FRONT ELEVATION**

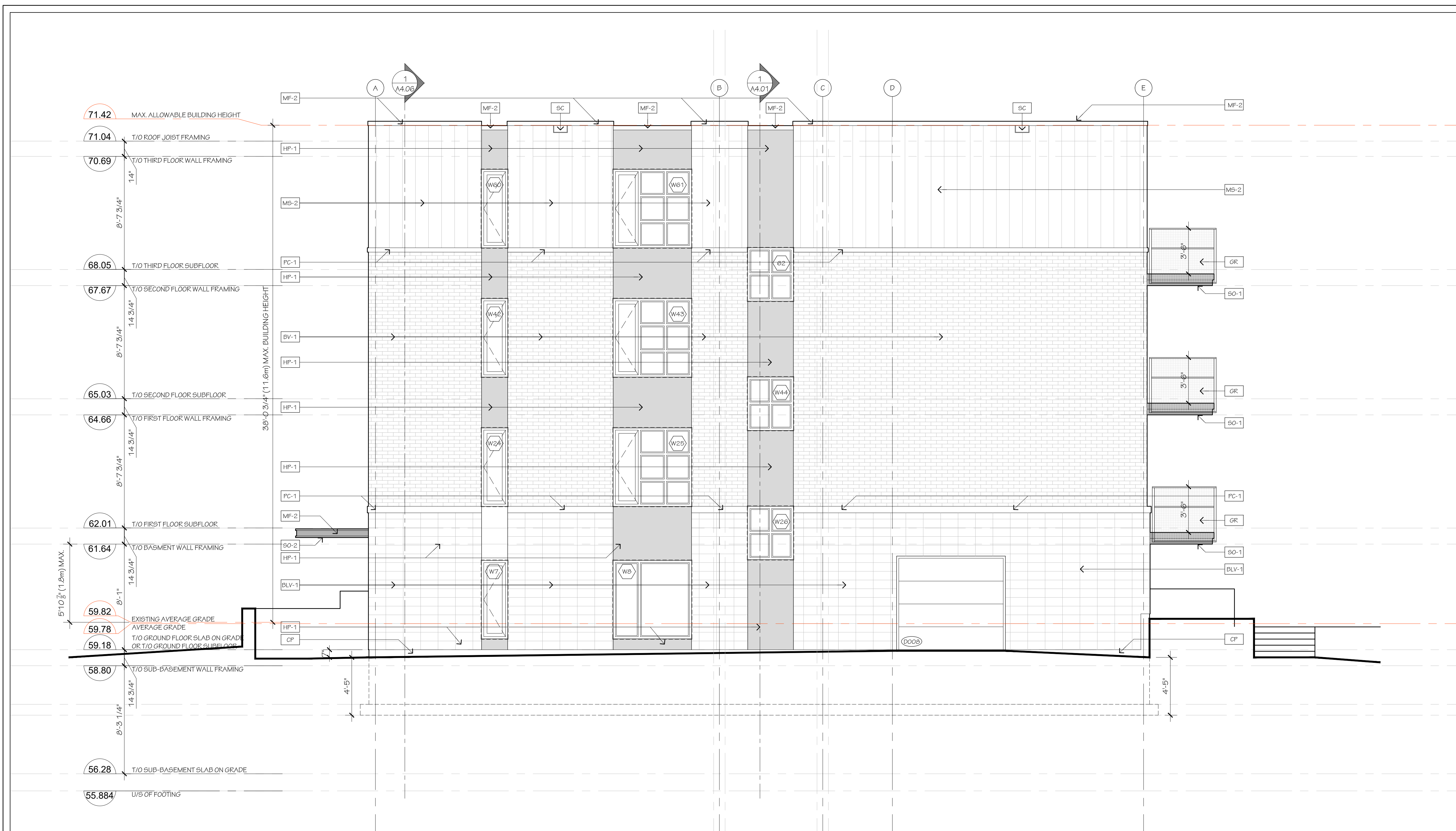
drawn	date	scale
SC	JUNE 2023	AS NOTED

project  
 2024

drawing no.  
**A3.01**

revision no.

D07-12-22-0027



- LEGEND**
- MS-1 PREFINISHED VERTICAL METAL SIDING TYPE 1 - IDEAL ROOFING HERITAGE SERIES - REGENT GRAY
  - MS-2 PREFINISHED VERTICAL METAL SIDING TYPE 2 - IDEAL ROOFING HERITAGE SERIES - BLACK MICA
  - MF-1 PREFINISHED METAL FLASHING TYPE 1 - TO MATCH REGENT GRAY
  - MF-2 PREFINISHED METAL FLASHING TYPE 2 - TO MATCH BLACK MICA
  - HP-1 HARDIE PANEL MAGNOLIA COLLECTION - COLOUR: MIDNIGHT SOOT
  - BV-1 BRICK VENEER TYPE 1 - MERIDIAN BRICK - WAKEFIELD BORDEAU
  - BSC-1 BRICK SOLIDER COURSE TYPE 1 - MERIDIAN BRICK - WAKEFIELD BORDEAU
  - BLV-1 BLOCK VENEER TYPE 1 BRAMPTON BRICK - FINESSE MINERAL GRAY, SAUVIE
  - PC-1 PRECAST CONCRETE SILL BRAMPTON BRICK - FINESSE MINERAL GRAY, SAUVIE
  - PC-2 PRECAST CONCRETE CAP BRAMPTON BRICK - FINESSE MINERAL GRAY, SAUVIE
  - CP CEMENT PARING
  - W1 WINDOW TYPE
  - D1 EXTERIOR DOOR TYPE
  - SC OVERFLOW SCUPPER SEE ROOF PLAN
  - CJ MASONRY CONTROL JOINT
  - LF LIGHT FIXTURE - REFER TO ELEC
  - GR CUSTOM POWDER COATED STEEL GUARD FRAME & PERFORATED STEEL SCREEN
  - SO-1 PRE-FINISHED METAL SOFFIT c/w VENT STRIPS, COLOUR TO MATCH FASCIA.
  - SO-2 CLEAR CEDAR SOFFIT c/w VENT STRIPS, CUTEK STAIN FINISH, COLOUR TBD.

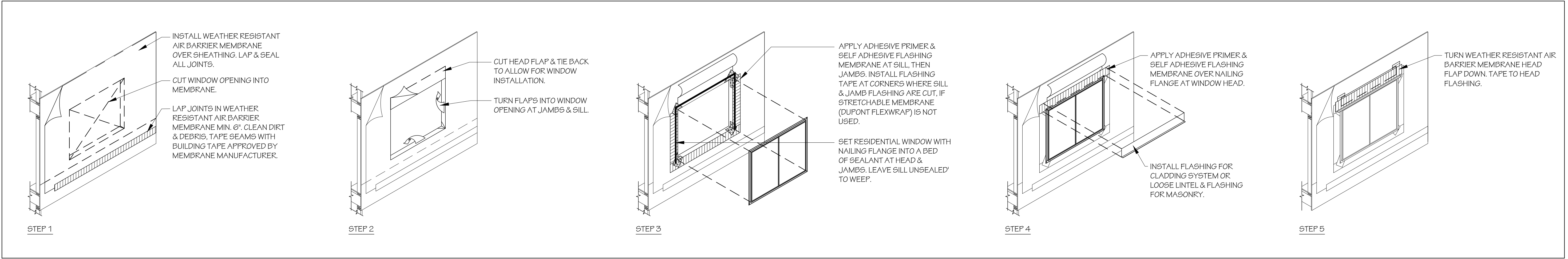
**GENERAL NOTES:**  
 REFER TO CIVIL DRAWINGS FOR GRADING ELEVATIONS  
 REFER TO SPEC SECTION 09 00 02 EXTERIOR FINISHES COLOR LEGEND FOR FULL MATERIALS DESCRIPTION

no.	date	revision
10	2024-01-05	ISSUED FOR SITE PLAN APPROVAL
9	2023-12-22	ISSUED FOR TENDER
8	2023-12-12	ISSUED ZONING DEFICIENCY RESPONSE
7	2023-12-08	ISSUED FOR TENDER COORDINATION
6	2023-11-09	ISSUED FOR BUILDING PERMIT
5	2023-09-14	ISSUED TO LIGHTING CONSULTANT
4	2023-09-11	ISSUED FOR CONSULTANT COORDINATION
3	2023-07-13	RE-LABELLING FOR exp
2	2023-06-29	RE-ISSUED FOR ENERGY MODELING
1	2023-06-23	ISSUED FOR ENERGY MODELING

It is the responsibility of the appropriate contractor to check and verify all dimensions on site and report all errors and/or omissions to the architect.  
 All contractors must comply with all pertinent codes and by-laws.  
 Do not scale drawings.  
 This drawing may not be used for construction until signed.  
 Copyright reserved.



1 EAST ELEVATION  
 SCALE: 1/4"=1'-0"



2 TYPICAL WINDOW PENETRATION FLASHING INSULATION DETAIL  
 SCALE: N.T.S.

**Hobin Architecture Incorporated**  
 63 Pamela Street  
 Ottawa, Ontario  
 Canada K1S 3K7  
 T: 613-238-7200  
 F: 613-238-2005  
 E: mail@hobinarc.com  
 hobinarc.com  
**HOBIN ARCHITECTURE**

project title  
**LARCH APARTMENTS**  
 15 LARCH ST, OTTAWA, ONTARIO

drawing title  
**RIGHT-SIDE ELEVATION**

drawn	date	scale
SC	JUNE 2023	AS NOTED
		project
		2024
		drawing no.
		<b>A3.02</b>
		revision no.



D07-12-22-0027



**LEGEND**

- MS-1 PREFINISHED VERTICAL METAL SIDING TYPE 1 - IDEAL ROOFING HERITAGE SERIES - REGENT GRAY
- MS-2 PREFINISHED VERTICAL METAL SIDING TYPE 2 - IDEAL ROOFING HERITAGE SERIES - BLACK MICA
- MF-1 PREFINISHED METAL FLASHING TYPE 1 - TO MATCH REGENT GRAY
- MF-2 PREFINISHED METAL FLASHING TYPE 2 - TO MATCH BLACK MICA
- HP-1 HARDIE PANEL MAGNOLIA COLLECTION - COLOUR: MIDNIGHT SOOT
- BV-1 BRICK VENEER TYPE 1 - MERIDIAN BRICK - WAKEFIELD BORDEAU
- BSC-1 BRICK SOLIDER COURSE TYPE 1 - MERIDIAN BRICK - WAKEFIELD BORDEAU
- BLV-1 BLOCK VENEER TYPE 1 BRAMPTON BRICK - FINESSE MINERAL GRAY, SAUVÉ
- PC-1 PRECAST CONCRETE SILL BRAMPTON BRICK - FINESSE MINERAL GRAY, SAUVÉ
- PC-2 PRECAST CONCRETE CAP BRAMPTON BRICK - FINESSE MINERAL GRAY, SAUVÉ
- CP CEMENT PARING
- W1 WINDOW TYPE
- D1 EXTERIOR DOOR TYPE
- Denotes OPERABLE WINDOW
- SC OVER FLOW SCUPPER SEE ROOF PLAN
- CJ MASONRY CONTROL JOINT
- LF LIGHT FIXTURE - REFER TO ELEC
- GR CUSTOM POWDER COATED STEEL GUARD FRAME & PERFORATED STEEL SCREEN
- SO-1 PRE-FINISHED METAL SOFFIT c/w VENT STRIPS. COLOUR TO MATCH FASCIA.
- SO-2 CLEAR CEDAR SOFFIT c/w VENT STRIPS. CUTEK STAIN FINISH. COLOUR TBD.

**GENERAL NOTES:**

REFER TO CIVIL DRAWINGS FOR GRADING ELEVATIONS

REFER TO SPEC SECTION 09 00 02 EXTERIOR FINISHES COLOR LEGEND FOR FULL MATERIALS DESCRIPTION

no.	date	revision
10	2024-01-05	ISSUED FOR SITE PLAN APPROVAL
9	2023-12-22	ISSUED FOR TENDER
8	2023-12-12	ISSUED ZONING DEFICIENCY RESPONSE
7	2023-12-08	ISSUED FOR TENDER COORDINATION
6	2023-11-09	ISSUED FOR BUILDING PERMIT
5	2023-09-14	ISSUED TO LIGHTING CONSULTANT
4	2023-09-11	ISSUED FOR CONSULTANT COORDINATION
3	2023-07-13	RE-LABELLING FOR exp
2	2023-06-28	RE-ISSUED FOR ENERGY MODELING
1	2023-06-23	ISSUED FOR ENERGY MODELING

It is the responsibility of the appropriate contractor to check and verify all dimensions on site and report all errors and/or omissions to the architect.

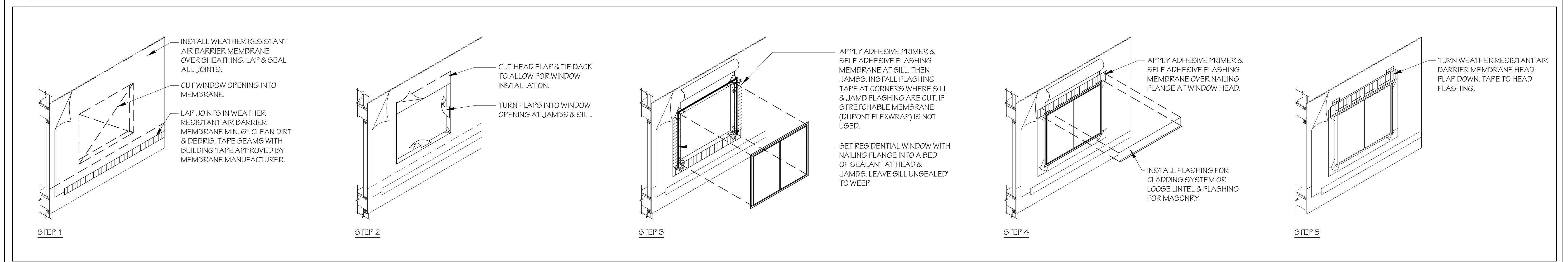
All contractors must comply with all pertinent codes and by-laws.

Do not scale drawings.

This drawing may not be used for construction until signed.

Copyright reserved.

1 NORTH ELEVATION  
SCALE: 1/4"=1'-0"



2 TYPICAL WINDOW PENETRATION FLASHING INSULATION DETAIL  
SCALE: N.T.S.

**Hobin Architecture Incorporated**  
63 Pamela Street  
Ottawa, Ontario  
Canada K1S 3K7  
T: 613 238-7200  
F: 613 235-2005  
E: mail@hobin.com  
hobin.com  
HOBIN ARCHITECTURE

project title  
**LARCH APARTMENTS**  
15 LARCH ST. OTTAWA, ONTARIO

drawing title  
**REAR ELEVATION**

drawn	date	scale
SC	JUNE 2023	AS NOTED

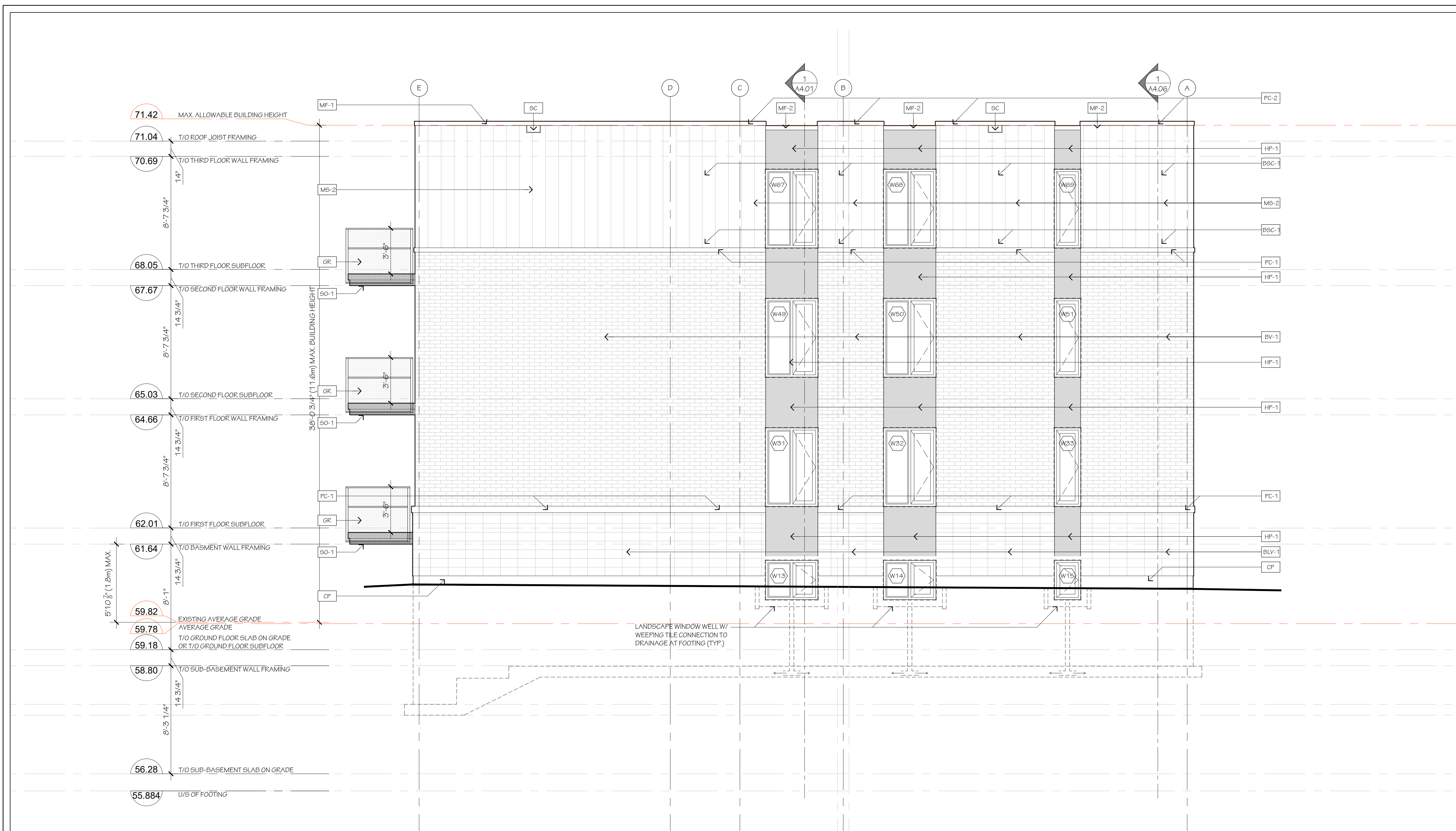
project  
2024

drawing no.  
**A3.03**

revision no.

ONARIO ASSOCIATION OF ARCHITECTS  
MARRY J. HOBIN  
LICENCE 3049

D07-12-22-0027



**LEGEND**

- MS-1 PREFINISHED VERTICAL METAL SIDING TYPE 1 - IDEAL ROOFING HERITAGE SERIES - REGENT GRAY
- MS-2 PREFINISHED VERTICAL METAL SIDING TYPE 2 - IDEAL ROOFING HERITAGE SERIES - BLACK MICA
- MF-1 PREFINISHED METAL FLASHING TYPE 1 - TO MATCH REGENT GRAY
- MF-2 PREFINISHED METAL FLASHING TYPE 2 - TO MATCH BLACK MICA
- HP-1 HARDIE PANEL MAGNOLIA COLLECTION - COLOUR: MIDNIGHT SOOT
- BV-1 BRICK VENEER TYPE 1 - MERIDIAN BRICK - WAKEFIELD BORDEAU
- BSC-1 BRICK SOLIDER COURSE TYPE 1 - MERIDIAN BRICK - WAKEFIELD BORDEAU
- BLV-1 BLOCK VENEER TYPE 1 BRAMPTON BRICK - FINESSE MINERAL GRAY, SAUVÉ
- PC-1 PRECAST CONCRETE SILL BRAMPTON BRICK - FINESSE MINERAL GRAY, SAUVÉ
- PC-2 PRECAST CONCRETE CAP BRAMPTON BRICK - FINESSE MINERAL GRAY, SAUVÉ
- CP CEMENT PARING
- W1 WINDOW TYPE
- D1 EXTERIOR DOOR TYPE
- Denotes OPERABLE WINDOW
- SC OVER FLOW SCUPPER SEE ROOF PLAN
- CJ MASONRY CONTROL JOINT
- LF LIGHT FIXTURE - REFER TO ELEC
- GR CUSTOM POWDER COATED STEEL GUARD FRAME & PERFORATED STEEL SCREEN
- SO-1 PRE-FINISHED METAL SOFFIT c/w VENT STRIPS, COLOUR TO MATCH FASCIA.
- SO-2 CLEAR CEDAR SOFFIT c/w VENT STRIPS, CUTEK STAIN FINISH, COLOUR TBD.

**GENERAL NOTES:**

- REFER TO CIVIL DRAWINGS FOR GRADING ELEVATIONS
- REFER TO SPEC SECTION 09 00 02 EXTERIOR FINISHES COLOR/LEGEND FOR FULL MATERIALS DESCRIPTION

no.	date	revision
10	2024-01-05	ISSUED FOR SITE PLAN APPROVAL
9	2023-12-22	ISSUED FOR TENDER
8	2023-12-12	ISSUED ZONING DEFICIENCY RESPONSE
7	2023-12-08	ISSUED FOR TENDER COORDINATION
6	2023-11-09	ISSUED FOR BUILDING PERMIT
5	2023-09-14	ISSUED TO LIGHTING CONSULTANT
4	2023-09-11	ISSUED FOR CONSULTANT COORDINATION
3	2023-07-13	RE-LABELLING FOR exp
2	2023-06-29	RE-ISSUED FOR ENERGY MODELING
1	2023-06-23	ISSUED FOR ENERGY MODELING

**ROCAHOMES**

**HOBIN ARCHITECTURE**

Hobin Architecture Incorporated  
 63 Pamela Street  
 Ottawa, Ontario  
 Canada K1S3K7  
 T: 613-238-7200  
 F: 613-238-2005  
 E: mail@hobinarc.com  
 hobinarc.com

project title  
**LARCH APARTMENTS**  
15 LARCH ST, OTTAWA, ONTARIO

drawing title  
**LEFT-SIDE ELEVATION**

drawn	date	scale
SC	JUNE 2023	AS NOTED

project  
 2024

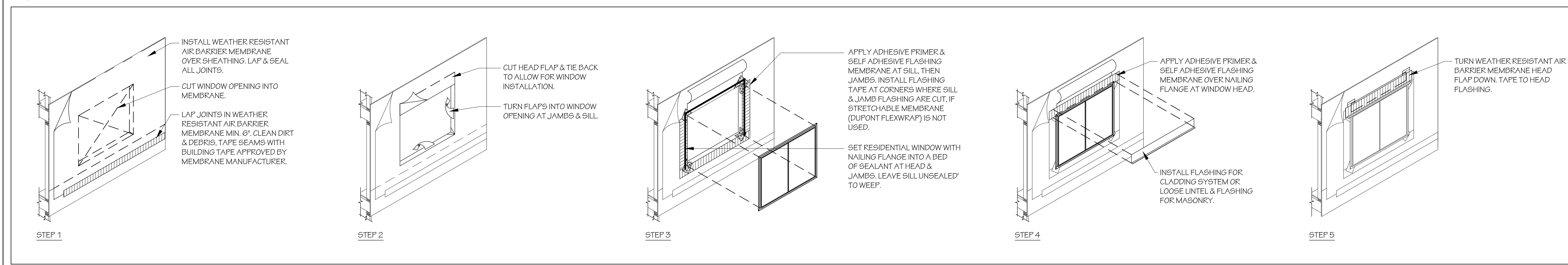
drawing no.  
**A3.04**

revision no.

**ONTARIO ASSOCIATION OF ARCHITECTS**  
 LARRY J. HOBIN  
 LICENCE 3049

**D07-12-22-0027**

1 WEST ELEVATION  
 SCALE: 1/4"=1'-0"



2 TYPICAL WINDOW PENETRATION FLASHING INSULATION DETAIL  
 SCALE: N.T.S.