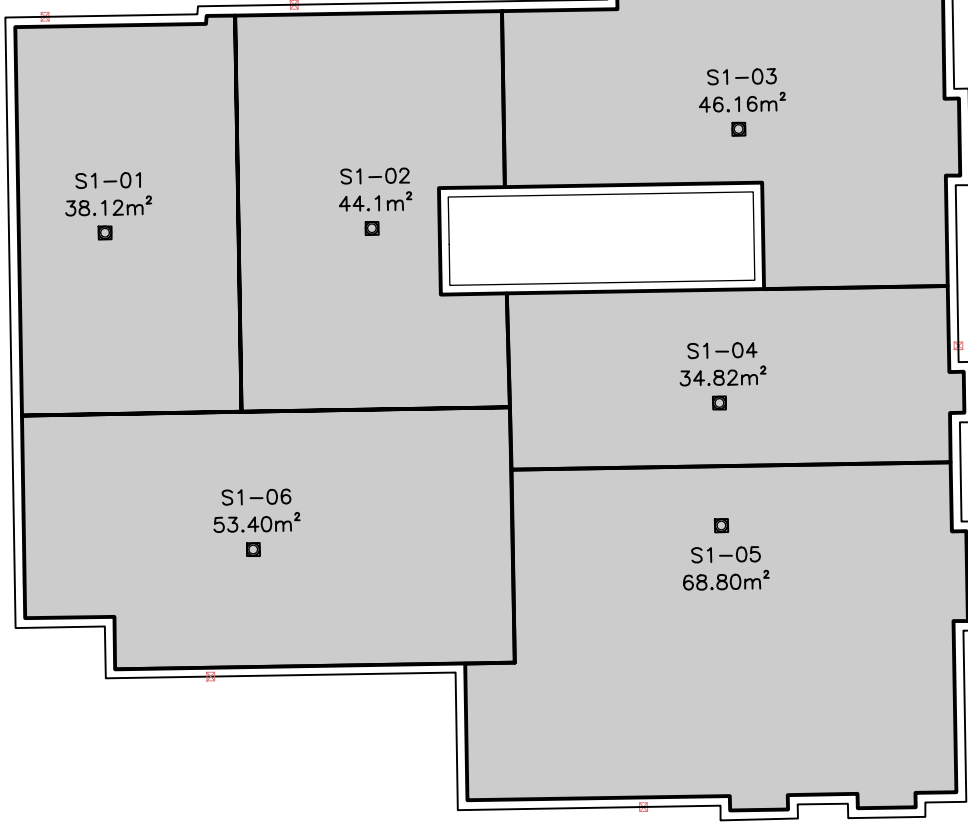
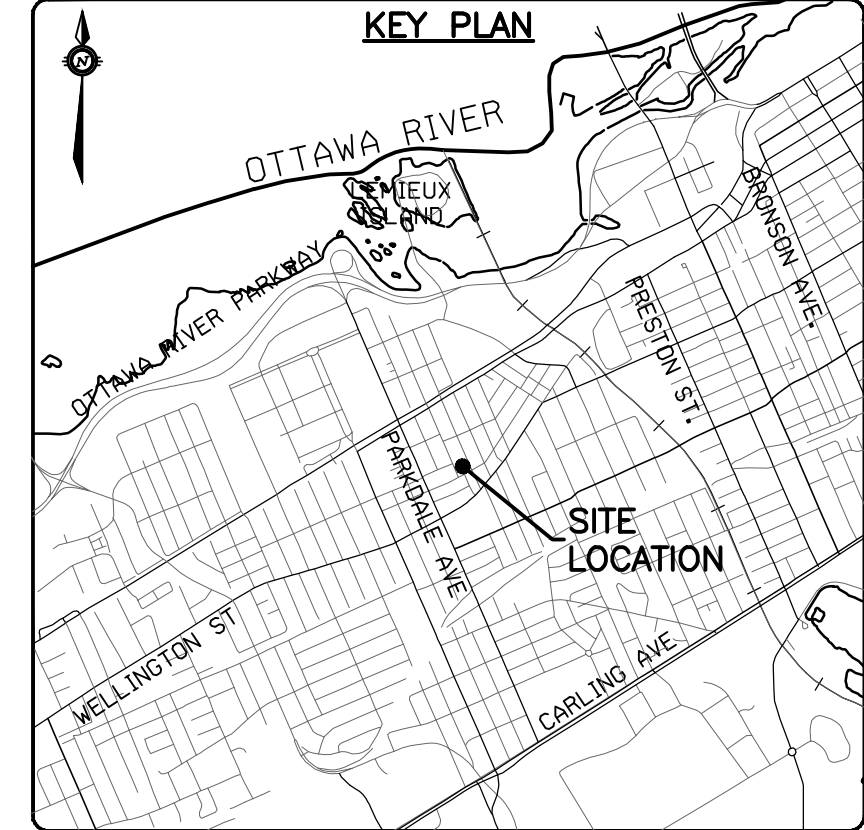


NOTES:
 1. SANITARY FIXTURES IN BASEMENT WILL REQUIRE PUMPING TO SANITARY LATERAL.

10.4m-150mm \varnothing STM LATERAL @1.00% CAPPED AT 1m FROM BUILDING BUILDING INV.=62.45
 8.0m-150mm \varnothing SAN LATERAL @2.0% CAPPED AT 1m FROM BUILDING BUILDING INV.=62.40
 50mm \varnothing WATER SERVICE CAPPED AT 1m FROM BUILDING BUILDING AS PER CITY DETAIL W33. T/W=61.56

CARRUTHERS AVE. SECTION A-A
 1:50

SECTION B-B
 1:30



ROOF PONDING

AREA #	100 YEAR PONDING DEPTH (mm)	WEIR TYPE	NO. OF WEIRS PER DRAIN	WEIR POSITION
S1-01	134	WATTS ACCUTROL	1	2 - CLOSED
S1-02	133	WATTS ACCUTROL	1	2 - CLOSED
S1-03	137	WATTS ACCUTROL	1	2 - CLOSED
S1-04	131	WATTS ACCUTROL	1	2 - CLOSED
S1-05	141	WATTS ACCUTROL	1	2 - CLOSED
S1-06	137	WATTS ACCUTROL	1	2 - CLOSED

STRUCTURE TABLE

STRUCTURE NUMBER	TYPE	LID ELEV (m)	INVERT IN (m) and DIA (mm)	INVERT OUT (m) and DIA (mm)	SIZE	REFERENCE	FRAME	COVER	Comment
CBE01	STORM	63.76	62.710 (N) (250)	62.830 (S) (250)	2500	City of Ottawa S31	Ottawa S31	Ottawa S31	
CBE02	STORM	63.83	62.840 (S) (250)	62.630 (E) (200)	600 x 600	OPSD 705.010	OPSD 400.020	Ottawa S19.1	Tempest LMF 50
CBE03	STORM	63.82	62.890 (N) (250)	62.430 (E) (150)	2500	City of Ottawa S31	Ottawa S31	Ottawa S31	
STMMH01	STORM	69.30	62.440 (W) (150) 62.550 (NW) (200)		12000	OPSD 701.010	Ottawa S25	Ottawa S24.1	

PROPOSED SEWER TABLE

STRUCTURE	U/S	D/S	TYPE	INVERT ELEV (m)		NOMINAL DIA. (mm)	LENGT H (m)	Type	Class	Comment
				U/S	D/S					
CBE01		CBE02	STM	62.830	62.710	250	6.60	HDPE	BOSS 2000	PERFORATED S29
CBE03		CBE02	STM	62.890	62.840	250	6.70	HDPE	BOSS 2000	PERFORATED S29
CBE02		WYE CONN.	STM	62.630	62.410	100	2.60	PVC	DR35	SOLID
BLDG. CAP		EX.MAIN CONN.	STM	62.450	62.350	150	10.40	PVC	DR35	SOLID
BLDG. CAP		EX.MAIN CONN.	SAN	62.400	62.120	150	2.60	PVC	DR35	SOLID

NOTES:
 1. THE CONTRACTOR SHALL VERIFY THE LOCATION AND ELEVATION OF EXISTING SERVICES PRIOR TO ANY CONSTRUCTION. THE CONTRACTOR SHALL CONFIRM LOCATIONS AND ELEVATIONS OF EXISTING SERVICES PRIOR TO COMMENCING CONSTRUCTION. ALL DIMENSIONS SHALL BE CHECKED AND VERIFIED IN THE FIELD BY THE CONTRACTOR PRIOR TO THE START OF CONSTRUCTION. ANY DISCREPANCIES, INTERPRETATIONS, CHANGES AND ADDITIONS TO THESE DRAWINGS MUST BE BROUGHT TO THE ATTENTION OF THE ENGINEER, WHEN NOTED AND BEFORE PROCEEDING WITH CONSTRUCTION WORKS. DO NOT CONTINUE CONSTRUCTION IN AREAS WHERE DISCREPANCIES APPEAR UNTIL SUCH DISCREPANCIES HAVE BEEN RESOLVED.
 2. ALL STORM AND SANITARY SERVICE LATERALS TO BE CAPPED WITH WATER TIGHT CAPS AND GROUTED AT THE PROPERTY LINE TO THE SATISFACTION OF THE CITY'S SEWER OPERATIONS.

CAUTION
 THE POSITION OF ALL POLE LINES, CONDUITS, WATERMANS, SEWERS AND OTHER UNDERGROUND AND OVERGROUND UTILITIES AND STRUCTURES IS NOT NECESSARILY SHOWN ON THE CONTRACT DRAWINGS, AND WHERE SHOWN, THE ACCURACY OF THE POSITION OF SUCH UTILITIES AND STRUCTURES IS NOT GUARANTEED. BEFORE STARTING WORK, DETERMINE THE EXACT LOCATION OF ALL SUCH UTILITIES AND STRUCTURES AND ASSUME ALL LIABILITY FOR DAMAGE TO THEM.

BENCHMARKING NOTES FOR SITE
 REFER TO LEGAL SURVEY PLAN PREPARED BY FARLEY, SMITH & DENIS SURVEYING INC. DATED APRIL 22, 2022.
 2. ELEVATIONS SHOWN ARE GEODETIC AND ARE REFERRED TO GEODETIC DATUM CGVD-1928 11978.
 3. ELEVATIONS DERIVED FROM MONUMENT NO. 0191969092 HAVING A PUBLISHED ELEVATION OF 84.092 METRES. LOCATION: ±340 METRES NORTH OF COLONNADE ROAD, ±15.3 METRES EAST OF THE EASTERLY FOG LINE ON PRINCE OF WALES DRIVE.
 4. IT IS THE RESPONSIBILITY OF THE USER OF THIS INFORMATION TO VERIFY THAT THE BENCHMARK HAS NOT BEEN ALTERED OR DISTURBED AND THAT ITS RELATIVE ELEVATION AND DESCRIPTION AGREES WITH THE INFORMATION SHOWN ON THIS DRAWING.

6	REVISED AS PER CITY COMMENTS	08/01/24	AC	BMT
5	ISSUED FOR SPC RESPONSE	15/12/23	AC	BMT
4	REVISED AS PER NEW SITE PLAN	17/11/23	AKJ	BMT
3	REVISED AS PER CITY COMMENTS	29/06/23	SAB	BMT
2	REVISED AS PER CITY COMMENTS	21/03/23	SAB	BMT
1	ISSUED FOR SITE PLAN APPROVAL	09/11/22	SAB	BMT
REV	REVISION DESCRIPTION	DATE	BY	APPD

DESIGNED BY: [Signature]

SCALE: 1:150

DESIGNED BY: [Signature]

REVIEWED BY: [Signature]

DEVELOPER
MCCORMICK PARK DEVELOPMENTS
 1600 LAPERRIERE AVENUE, SUITE 205
 OTTAWA, ON. K1M 2H9
 613.421.1515

exp.

exp Services Inc.
 1-416-668-1899 | 1-613-225-7330
 3005 Commercial Drive, Unit 100
 Ottawa, ON K2B 8K6
 Canada
 www.exp.com

• BUILDINGS • EARTH & ENVIRONMENT • ENERGY •
 • INDUSTRIAL • INFRASTRUCTURE • SUSTAINABILITY •

PROJECT
CARRUTHERS AVENUE DEVELOPMENT
 266-268 CARRUTHERS
 OTTAWA, ONTARIO.

SITE SERVICING PLAN

PROJECT No. OTT-22014656-AC
 SURVEY F/W/FSD
 DATE JUNE 2022
 DRAWING No. C100

96875