

- ISSUED
- | No. | Date | Description |
|-----|-------------|---|
| 0 | 2023 MAR 22 | ISSUED FOR SITE PLAN APPROVAL |
| 1 | 2023 MAY 12 | ISSUED FOR 100% SCHEMATIC DESIGN |
| 2 | 2023 MAY 18 | ISSUED FOR REZONING AND SITE PLAN CONTROL - RESUBMISSION #1 |
| 3 | 2023 JUL 13 | ISSUED FOR SITE PLAN CONTROL - RESUBMISSION #2 |

LEGEND

- FLOW CONTROLLED ROOF DRAIN
- UNCONTROLLED FLOW ROOF DRAIN
- AMENITY/UNOCCUPIABLE ROOF - NO FLOW CONTROL
- 5 YR=22mm DEPTH
- 100 YR=60mm DEPTH

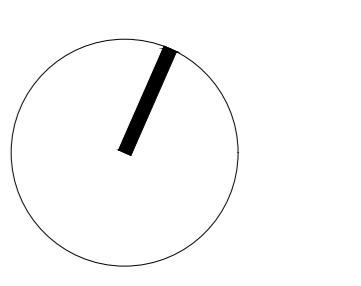
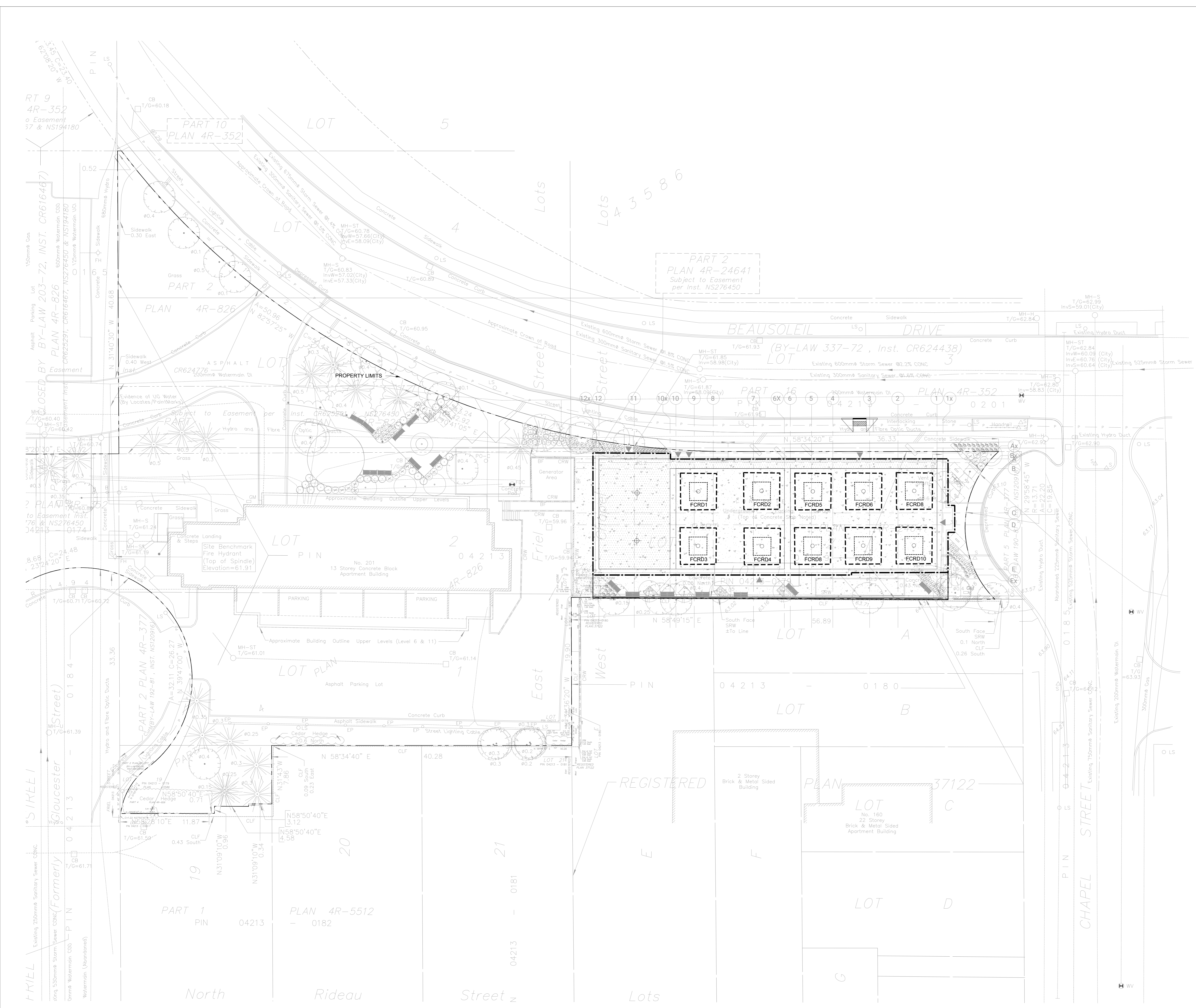
PRODUCT HEAD vs. FLOW

PONDING DEPTH (m)	FLOW (L/s)				
	OPEN	3/4	1/2	1/4	CLOSED
0.025	0.315	0.315	0.315	0.315	0.315
0.05	0.631	0.631	0.631	0.631	0.315
0.075	0.946	0.867	0.789	0.710	0.315
0.1	1.262	1.104	0.946	0.789	0.315
0.125	1.577	1.341	1.104	0.867	0.315
0.15	1.893	1.577	1.262	0.946	0.315

- NOTES:
- PRODUCT - ADJUSTABLE ACCUTROL WEIR SETTING - 3/4 FLOW RATE APPROX. 0.8L/s IN 100-YR EVENT
 - FOR SCUPPER / EMERGENCY OVERFLOW LOCATIONS / ELEVATION REFER TO ARCHITECTURAL

Andrew McCreight
ANDREW MCCREIGHT
MANAGER (A), DEVELOPMENT REVIEW CENTRAL
PLANNING, REAL ESTATE & ECONOMIC DEVELOPMENT
DEPARTMENT, CITY OF OTTAWA

APPROVED
By Andrew McCreight at 4:14 pm, Dec 21, 2023



CONTRACTOR MUST CHECK & VERIFY ALL DIMENSIONS ON THE JOB. SHOWN SCALE DRAWING.
ALL DRAWINGS, SPECIFICATIONS AND RELATED DOCUMENTS ARE THE COPYRIGHT PROPERTY OF THE ARCHITECT AND MUST BE RETURNED UPON REQUEST. REPRODUCTION OF DRAWINGS, SPECIFICATIONS AND RELATED DOCUMENTS IN PART OR IN WHOLE IS FORBIDDEN WITHOUT THE WRITTEN PERMISSION OF THE ARCHITECT.
THIS DRAWING IS NOT TO BE USED FOR CONSTRUCTION UNLESS SIGNED BY THE ARCHITECT.

OCH FRIEL STREET / CHAPEL
200001 FRIEL STREET
221021

ROOF DRAIN LAYOUT & PONDING
Scale: 1:200
Project No: 220282000
Date: 13/07/23
C701
#18930

