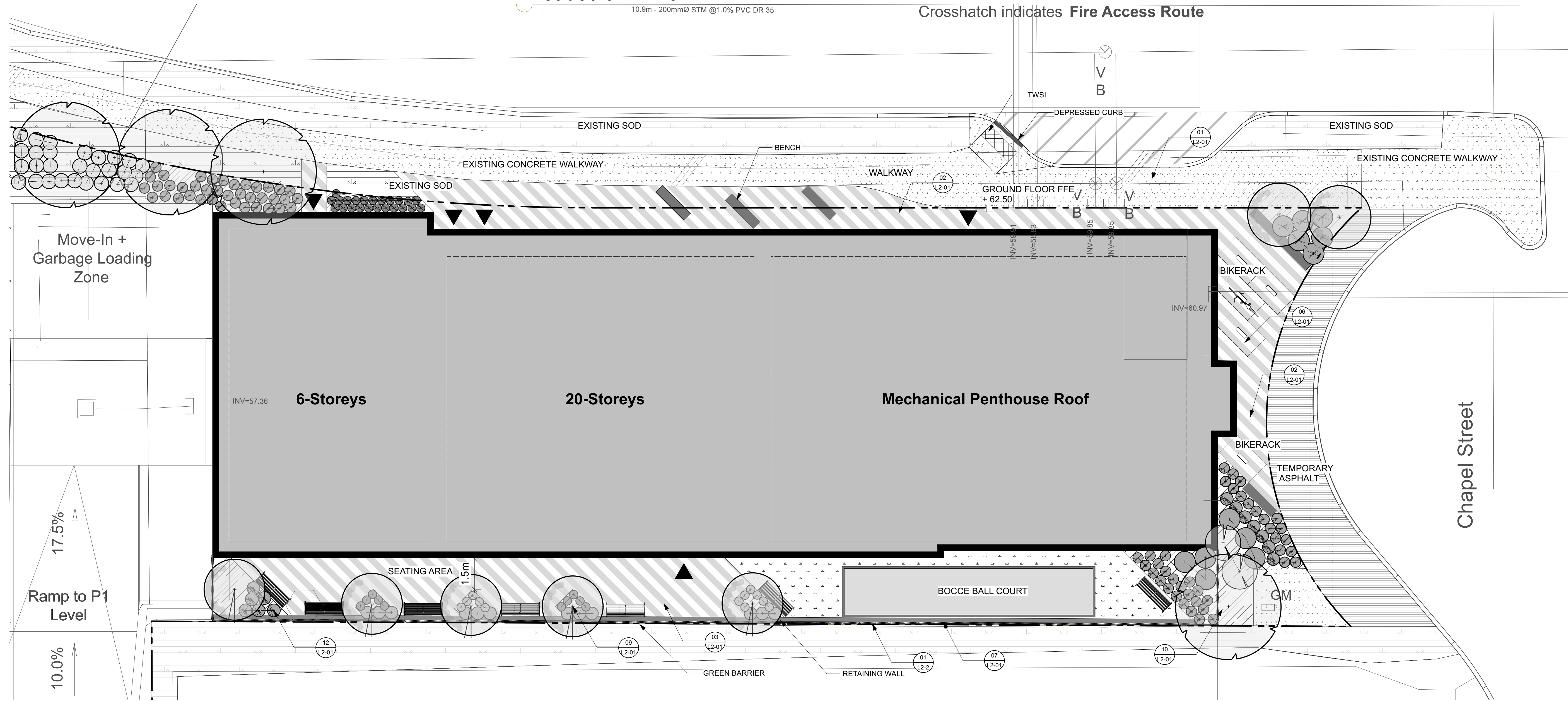


# Beausoleil Drive

10.9m - 200mm Ø STM @ 1.0% PVC DR 35

Crosshatch indicates Fire Access Route



Move-In +  
Garbage Loading  
Zone

17.5%  
Ramp to P1  
Level  
10.0%

**1** LANDSCAPE PLAN  
L1-01 Scale: 1:100

- LEGEND**
- Property Line
  - Screen Willow Fence
  - Artificial Turf
  - Existing green area
  - Mulch
  - Unit Pavers
  - Light Duty Concrete Walkway
  - Temporary Asphalt
  - Site Furniture
  - Bike Rack
  - Proposed Shrubs/grasses/perennials
  - Proposed trees

*Andrew McCreight*  
**ANDREW MCCREIGHT**  
MANAGER (A), DEVELOPMENT REVIEW CENTRAL  
PLANNING, REAL ESTATE & ECONOMIC DEVELOPMENT  
DEPARTMENT, CITY OF OTTAWA

**APPROVED**  
By Andrew McCreight at 4:15 pm, Dec 21, 2023



KEY PLAN, NTS

**LANDSCAPE NOTES**

1. All general site information and conditions compiled from architect's and engineer's plans and surveys.
2. Do not scale this drawing.
3. Report any discrepancies prior to commencing work. No responsibility is born by the Landscape Architect for unknown subsurface conditions.
4. Reinststate all areas and items damaged as a result of construction activities to the satisfaction of the Landscape Architect.
5. Drawing may not be used for construction until signed by Landscape Architect as issued for construction.
6. The accuracy of the position of utilities is not guaranteed.
7. Individual utility co. must be contacted for confirmation of utility existence and location prior to digging.
8. This drawing is an instrument of service and requires the permission of the Landscape Architect for use. Copyright is reserved by the Landscape Architect, David M. Lashley.
9. Plant material shall be No. 1 Grade and shall comply with the Metric Guide Specifications for Nursery stock (latest edition), published by Canadian Nursery Trades Association.
10. Plant substitutions shall not be permitted unless approved by the Landscape Architect.
11. Obtain approval of planting prior to digging.
12. Topsoil shall be garden siri mixture sandy loam with min. 5% organic matter and peat moss added at ratio of 1:10, topsoil to be approved by Landscape Architect.



NO.	DATE	DESCRIPTION
F	2023-12-11	ISSUED FOR SITE PLAN CONTROL RESUBMISSION
E	2023-08-25	ISSUED FOR 100% DESIGN DEVELOPMENT
D	2023-07-12	ISSUED FOR SITE PLAN CONTROL RS #2
C	2023-05-18	ISSUED FOR REZONING & SITE PLAN CONTROL RS #1
B	2023-05-12	ISSUED FOR 100% SCHEMATIC DESIGN
A	2023-03-22	ISSUED FOR REZONING AND SITE PLAN CONTROL

**SEAL:** **NORTH:**



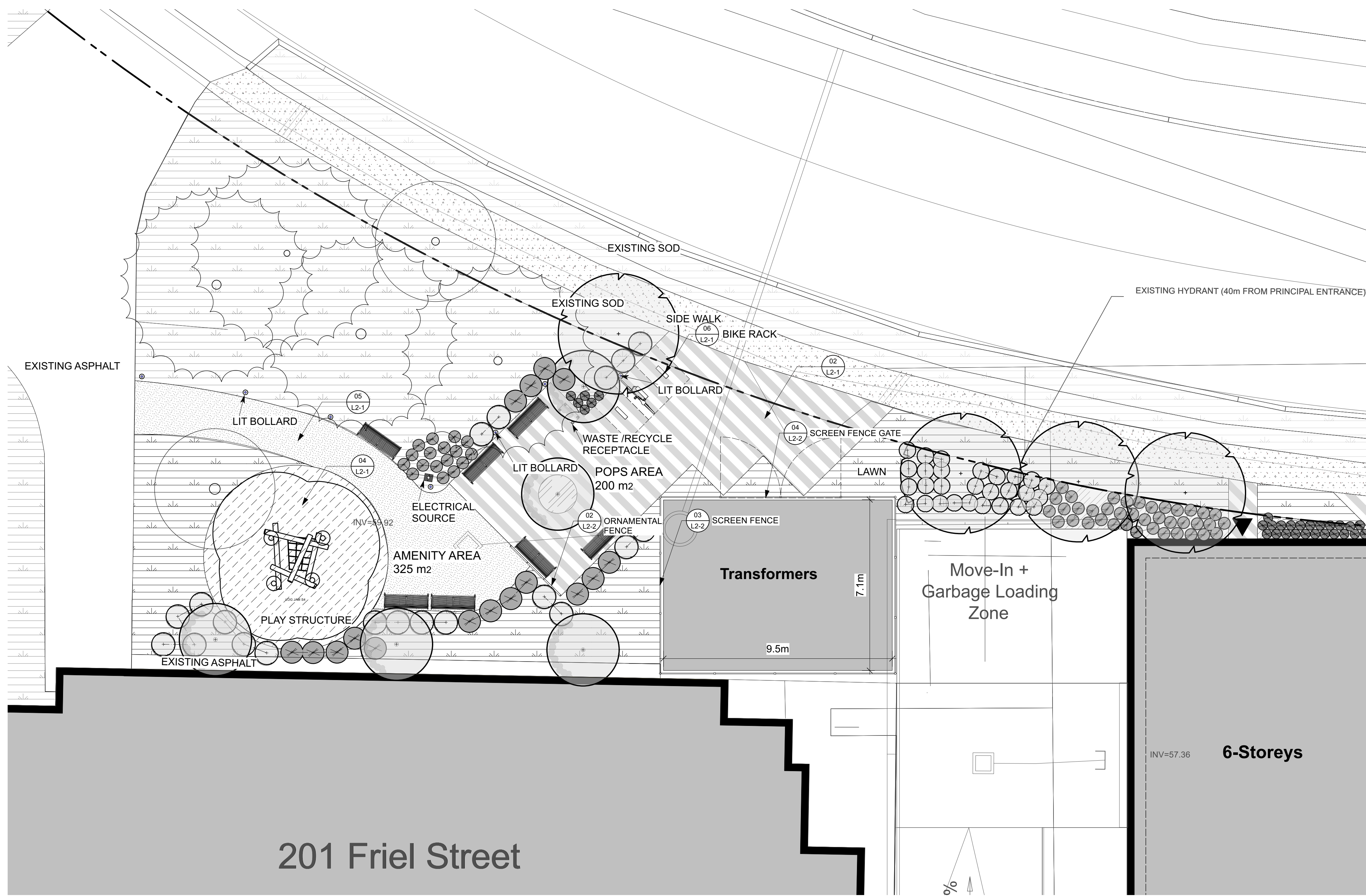
**CONSULTANT:**  
**diamond schmitt**

**PROJECT:**  
**OCH 200/201 FREIL STREET**  
200/201 FREIL STREET, OTTAWA,  
ONTARIO

**DRAWING TITLE:**  
**LANDSCAPE PLAN**

<b>DATE:</b>	2023-03-14	<b>DRAWING NO.:</b>	
<b>SCALE:</b>	AS NOTED	<b>LA PROJECT NO.:</b>	22844-1
<b>DRAWN BY:</b>	MH		

**L1-01**



**LEGEND**

- Property Line
- Ornamental Steel Fence
- Transformer Screen Fence
- Engineered Wood Fiber
- Existing Green Area
- Mulch
- Light Duty Asphalt
- Unit Pavers
- Light Duty Concrete Walkway
- Site Furniture
- Bike Rack
- Waste/Recycle Receptacle
- Lit Bollard
- Electrical Source
- Proposed Shrubs/grasses/perennials
- Proposed trees
- Existing trees

1 LANDSCAPE PLAN-POPS  
L1-02 Scale: 1:100



KEY PLAN, NTS

**LANDSCAPE NOTES**

1. All general site information and conditions compiled from architect's and engineer's plans and surveys.
2. Do not scale this drawing.
3. Report any discrepancies prior to commencing work. No responsibility is born by the Landscape Architect for unknown subsurface conditions.
4. Reinstale all areas and items damaged as a result of construction activities to the satisfaction of the Landscape Architect.
5. Drawing may not be used for construction until signed by Landscape Architect as issued for construction.
6. The accuracy of the position of utilities is not guaranteed.
7. Individual utility co. must be contacted for confirmation of utility existence and location prior to digging.
8. This drawing is an instrument of service and requires the permission of the Landscape Architect for use. Copyright is reserved by the Landscape Architect, David M. Lashley.
9. Plant material shall be No. 1 Grade and shall comply with the Metric Guide Specifications for Nursery stock (latest edition), published by Canadian Nursery Trades Association.
10. Plant substitutions shall not be permitted unless approved by the Landscape Architect.
11. Obtain approval of planting prior to digging.
12. Topsoil shall be garden silt mixture sandy loam with min. 5% organic matter and peat moss added at ratio of 1:10, topsoil to be approved by Landscape Architect.

**CLIENT:**



F	2023-12-11	ISSUED FOR SITE PLAN CONTROL RESUBMISSION
E	2023-08-25	ISSUED FOR 100% DESIGN DEVELOPMENT
D	2023-07-12	ISSUED FOR SITE PLAN CONTROL RS #2
C	2023-05-18	ISSUED FOR REZONING & SITE PLAN CONTROL RS #1
B	2023-05-12	ISSUED FOR 100% SCHEMATIC DESIGN
A	2023-03-22	ISSUED FOR REZONING AND SITE PLAN CONTROL

NO.	DATE	DESCRIPTION
SEAL:		NORTH:



**CONSULTANT:**



**PROJECT:**

**OCH 200/201 FREIL STREET**  
200/201 FREIL STREET, OTTAWA,  
ONTARIO

**DRAWING TITLE:**

LANDSCAPE PLAN-POPS

DATE:	2023-03-14	DRAWING NO.:	
SCALE:	AS NOTED		
DRAWN BY:	MH		
LA PROJECT NO.:	22844-1		

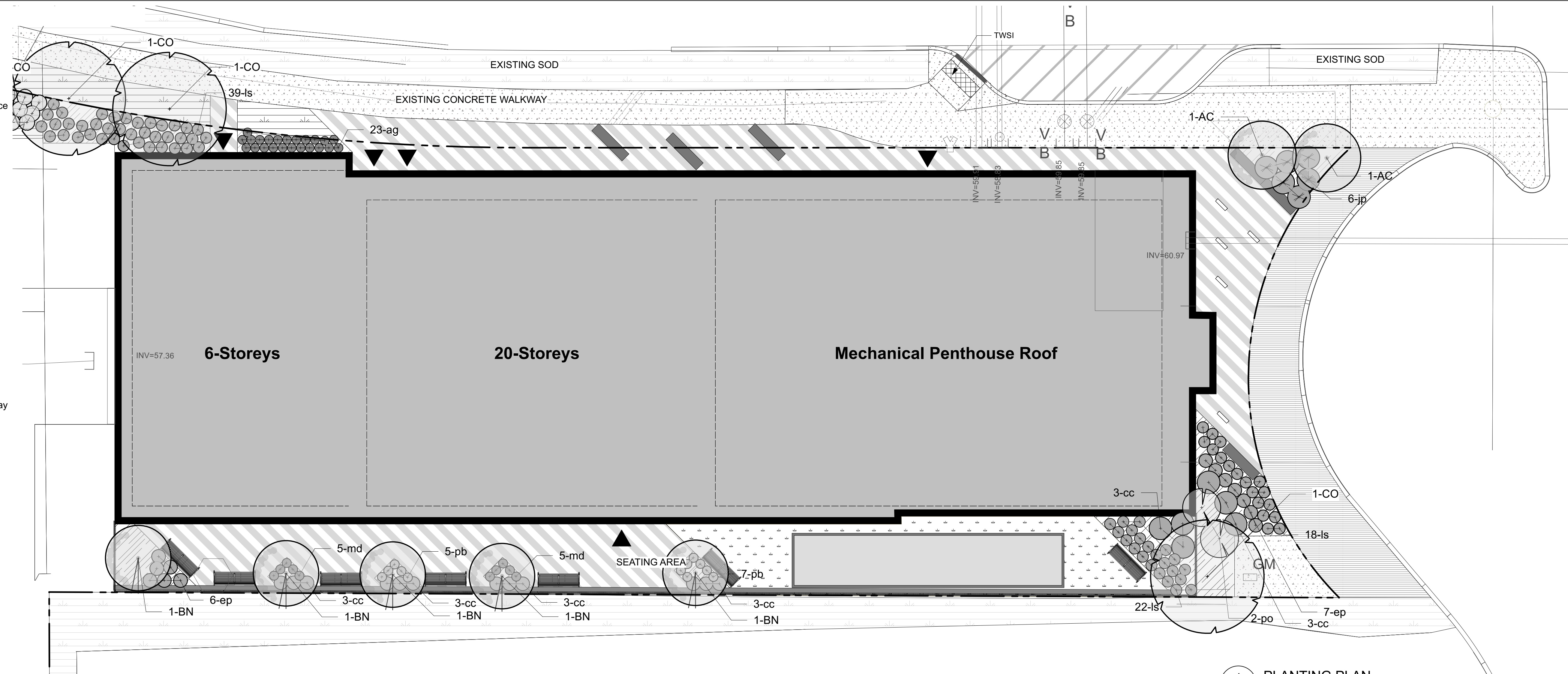
**L1-02**

**ANDREW MCCREIGHT**  
MANAGER (A), DEVELOPMENT REVIEW CENTRAL  
PLANNING, REAL ESTATE & ECONOMIC DEVELOPMENT  
DEPARTMENT, CITY OF OTTAWA

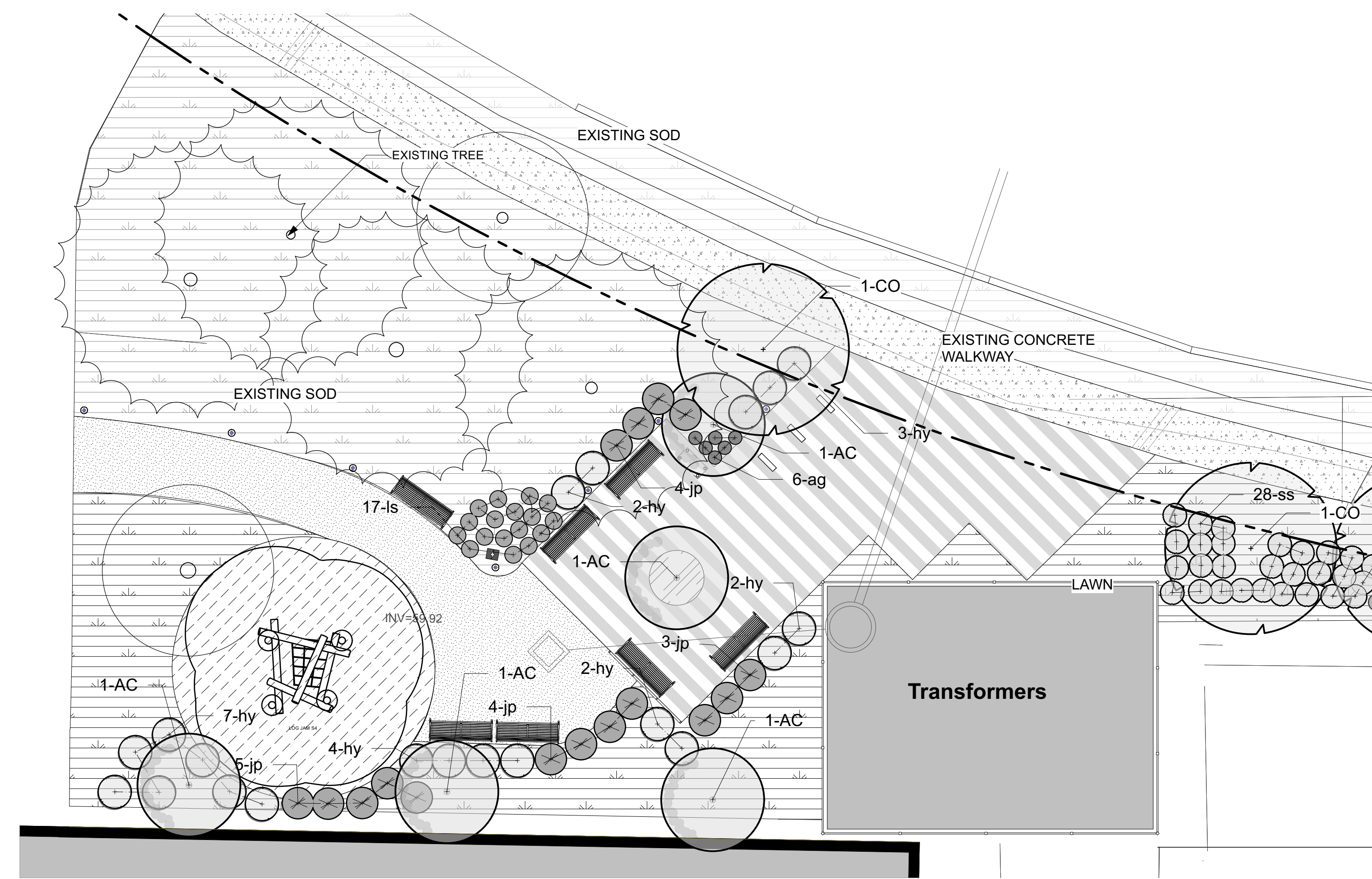
**APPROVED**  
By Andrew McCreight at 4:15 pm, Dec 21, 2023

**LEGEND**

- Property Line
- Screen Willow Fence
- Ornamental Steel Fence
- Transformer Screen Fence
- Engineered Wood Fiber
- Existing Green Area
- Mulch
- Light Duty Asphalt
- Unit Pavers
- Light Duty Concrete Walkway
- Temporary Asphalt
- Site Furniture
- Bike Rack
- Waste/Recycle Receptacle
- Lit Bollard
- Electrical Source
- Proposed Shrubs/grasses/perennials
- Proposed trees
- Existing trees



**1 PLANTING PLAN**  
Scale: 1:100



**2 PLANTING PLAN**  
Scale: 1:100



KEY PLAN, NTS

**LANDSCAPE NOTES**

1. All general site information and conditions compiled from architect's and engineer's plans and surveys.
2. Do not scale this drawing.
3. Report any discrepancies prior to commencing work. No responsibility is born by the Landscape Architect for unknown subsurface conditions.
4. Reinstall all areas and items damaged as a result of construction activities to the satisfaction of the Landscape Architect.
5. Drawing may not be used for construction until signed by Landscape Architect as issued for construction.
6. The accuracy of the position of utilities is not guaranteed.
7. Individual utility co. must be contacted for confirmation of utility existence and location prior to digging.
8. This drawing is an instrument of service and requires the permission of the Landscape Architect for use. Copyright is reserved by the Landscape Architect, David M. Lashley.
9. Plant material shall be No. 1 Grade and shall comply with the Metric Guide Specifications for Nursery stock (latest edition), published by Canadian Nursery Trades Association.
10. Plant substitutions shall not be permitted unless approved by the Landscape Architect.
11. Obtain approval of planting prior to digging.
12. Topsoil shall be garden silt mixture sandy loam with min. 5% organic matter and peat moss added at ratio of 1:10, topsoil to be approved by Landscape Architect.

**CLIENT:**



F	2023-12-11	ISSUED FOR SITE PLAN CONTROL RESUBMISSION
E	2023-08-25	ISSUED FOR 100% DESIGN DEVELOPMENT
D	2023-07-12	ISSUED FOR SITE PLAN CONTROL RS #2
C	2023-05-18	ISSUED FOR REZONING & SITE PLAN CONTROL RS #1
B	2023-05-12	ISSUED FOR 100% SCHEMATIC DESIGN
A	2023-03-22	ISSUED FOR REZONING AND SITE PLAN CONTROL

<b>NO.</b>	<b>DATE</b>	<b>DESCRIPTION</b>
<b>SEAL:</b>		<b>NORTH:</b>

*Andrew McCreight*  
**ANDREW MCCREIGHT**  
MANAGER (A), DEVELOPMENT REVIEW CENTRAL  
PLANNING, REAL ESTATE & ECONOMIC DEVELOPMENT  
DEPARTMENT, CITY OF OTTAWA

**APPROVED**  
By Andrew McCreight at 4:15 pm, Dec 21, 2023

**Plant List - Types**

	Qty	Common Name	Botanical Name	Scheduled Size	Comments
<b>Trees</b>					
BN	5	RIVER BIRCH	BETULA NIGRA	Clump 50 CM WB	Pot
AC	7	SERVICEBERRY	AMELANCHIER CANADENSIS	Clump 175 CM WB	Pot
CO	5	COMMON HACKBERRY	CELTIS OCCIDENTALIS	50 mm Caliper	
<b>Shrubs</b>					
jp	22	JOE PYLE WEEED BONESET	EUPATORIUM MACULATUM "GATEWAY"	1 gal	Pot
hy	20	ANNABELLE HYDRANGEA	HYDRANGEA ARBORESCENS	3 gal	Pot
po	2	COMMON NINEBARK	PHYSOCARPUS OPULEFOLIUS	3 gal	Pot
<b>Perennials and Grasses</b>					
md	10	BEE BALM	MONARDA DIDYMA	1 gal	Pot
cc	18	CANADA BLUE JOINT	CALAMAGROSTIS CANADENSIS	1 gal	Pot
ls	96	DENSE BLAZING STAR	LIATRIS SPICATA	1 gal	Pot
ss	28	LITTLE BLUESTEM	SCHIZACHYRIUM SCOPARUM "BLUE PARADIS"	1 gal	Pot
oa	23	ORNAMENTAL ONION	ALLIUM GIGANTEUM	1 gal	Pot
ep	13	PURPLE CONEFLOWER	ECHINACEA PURPUREA	1 gal	Pot
pb	12	WOODLAND PHLOX	PHLOX BLUE MOON	1 gal	Pot



**CONSULTANT:**



**PROJECT:**

**OCH 200/201 FREIL STREET**  
200/201 FREIL STREET, OTTAWA,  
ONTARIO

**DRAWING TITLE:**

**PLANTING PLAN**

<b>DATE:</b>	2023-03-14	<b>DRAWING NO.:</b>	
<b>SCALE:</b>	AS NOTED	<b>L1-03</b>	
<b>DRAWN BY:</b>	MH		
<b>LA PROJECT NO.:</b>	22844-1		

D07-12-23-0034