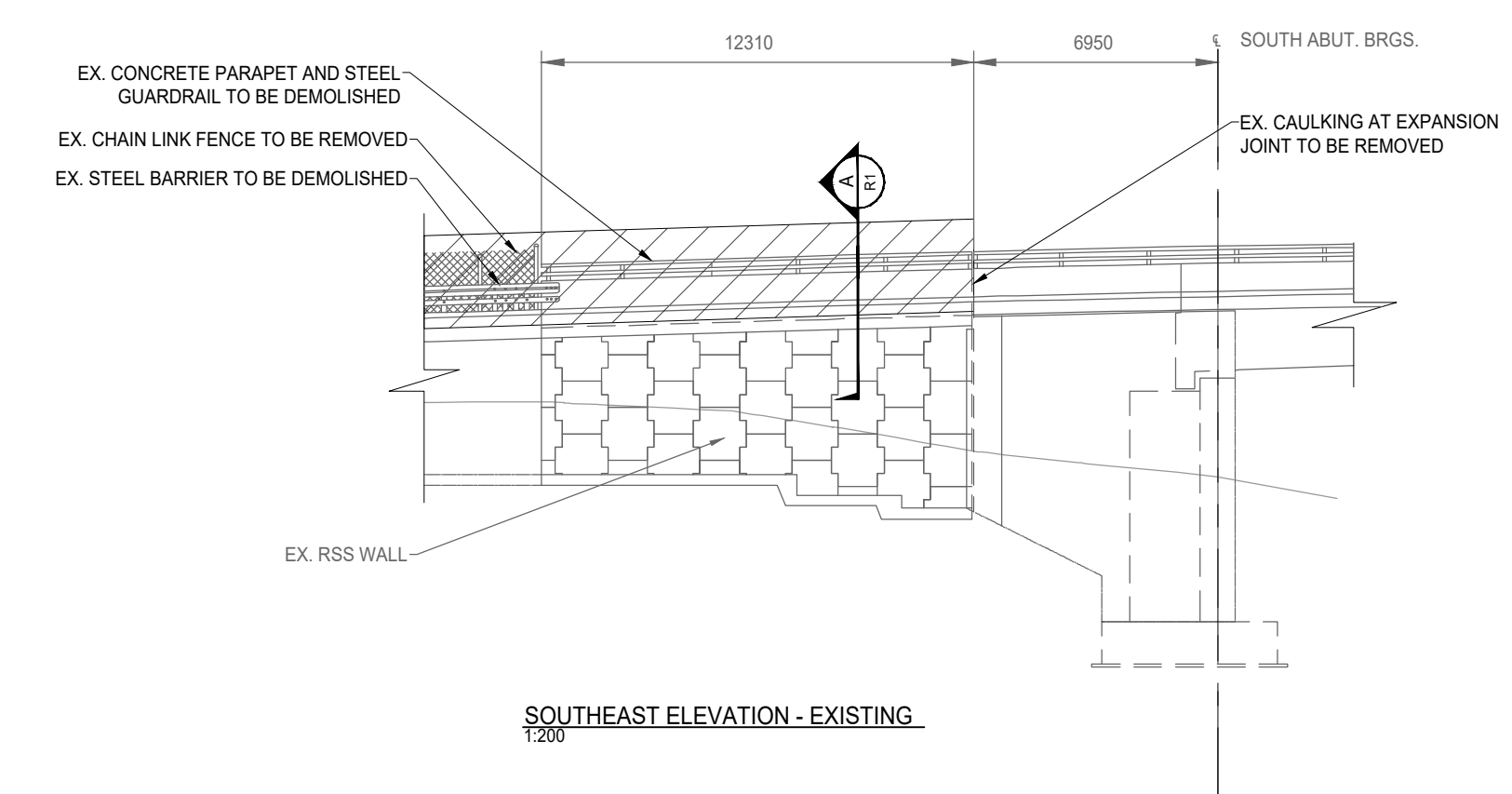


PLAN - EXISTING  
1200

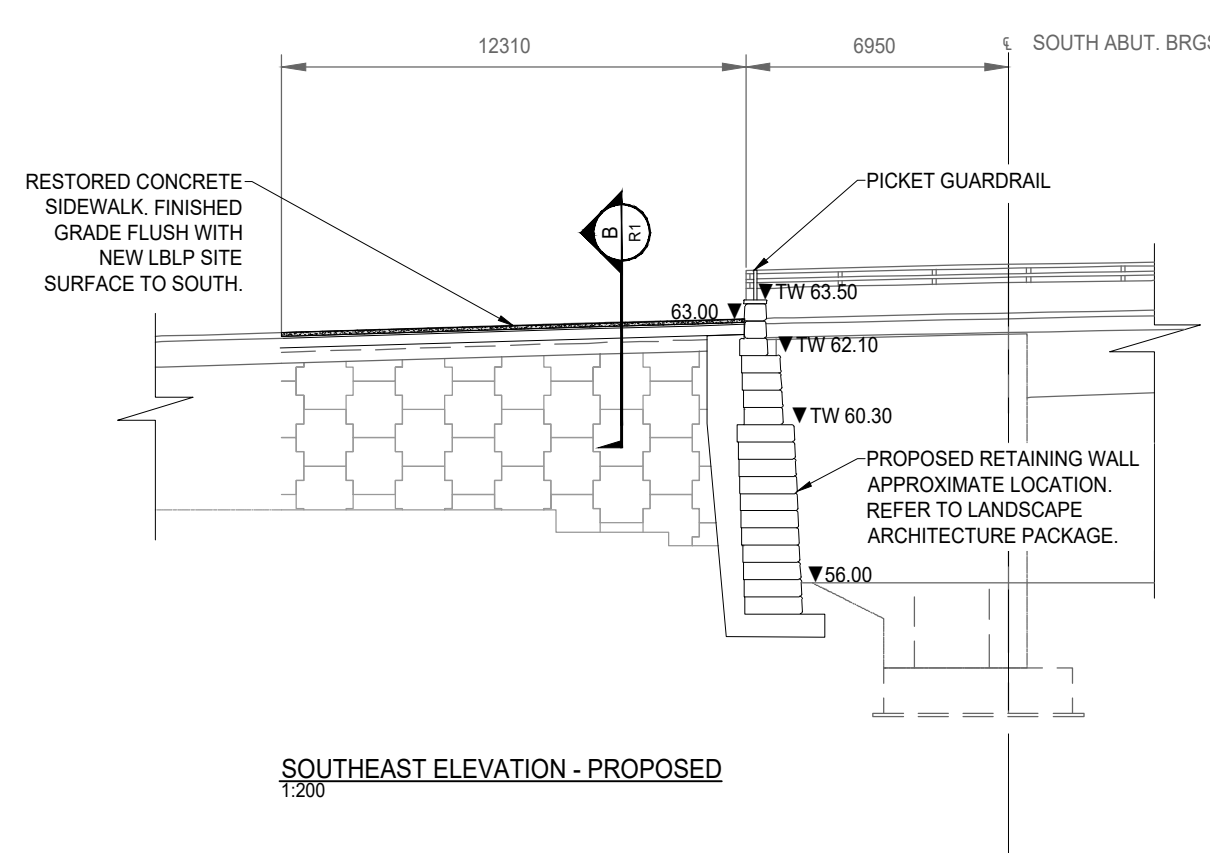
*Andrew McCreight*

**ANDREW MCCREIGHT**  
MANAGER (A), DEVELOPMENT REVIEW CENTRAL  
PLANNING, REAL ESTATE & ECONOMIC DEVELOPMENT  
DEPARTMENT, CITY OF OTTAWA

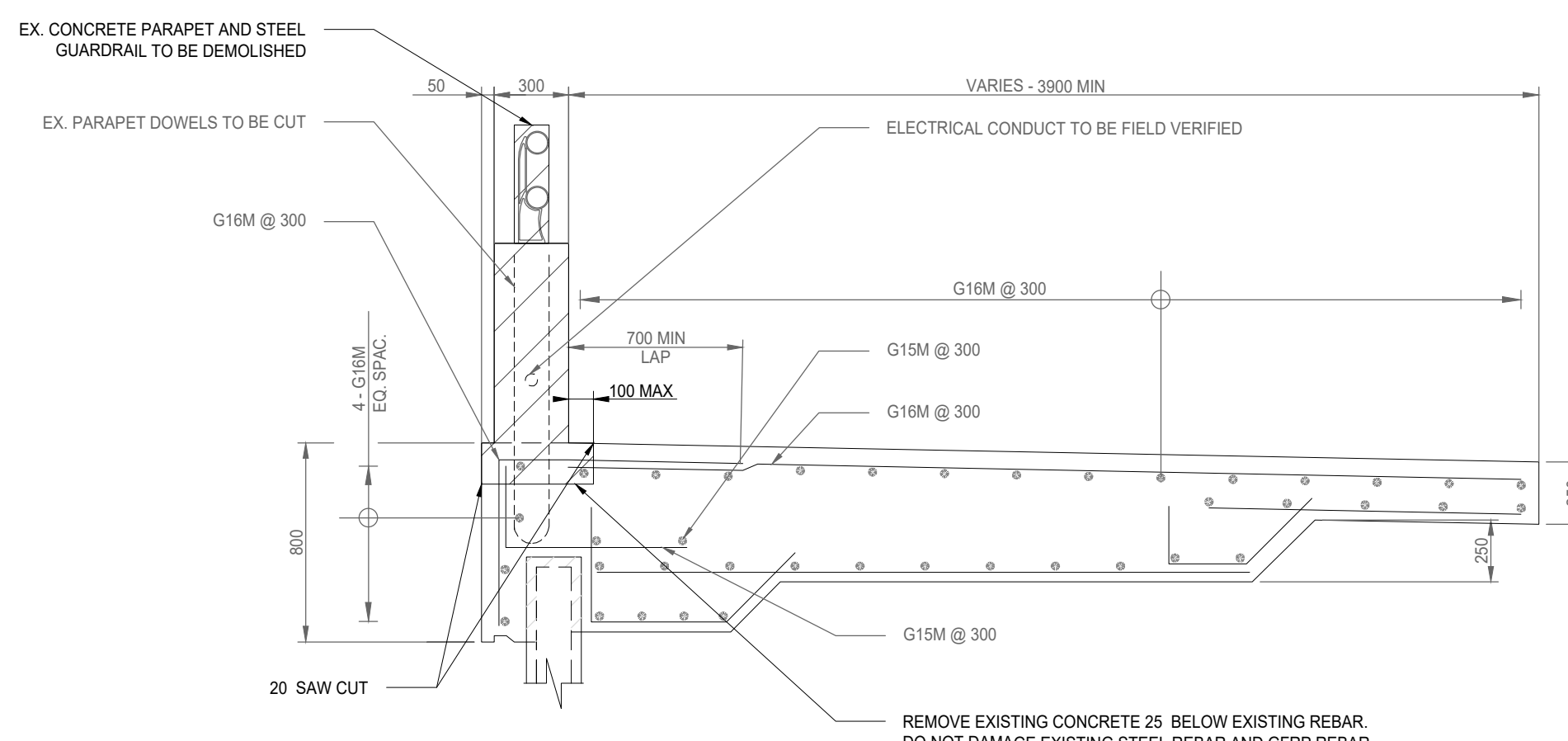
**APPROVED**  
By Andrew McCreight at 2:03 pm, Dec 14, 2023



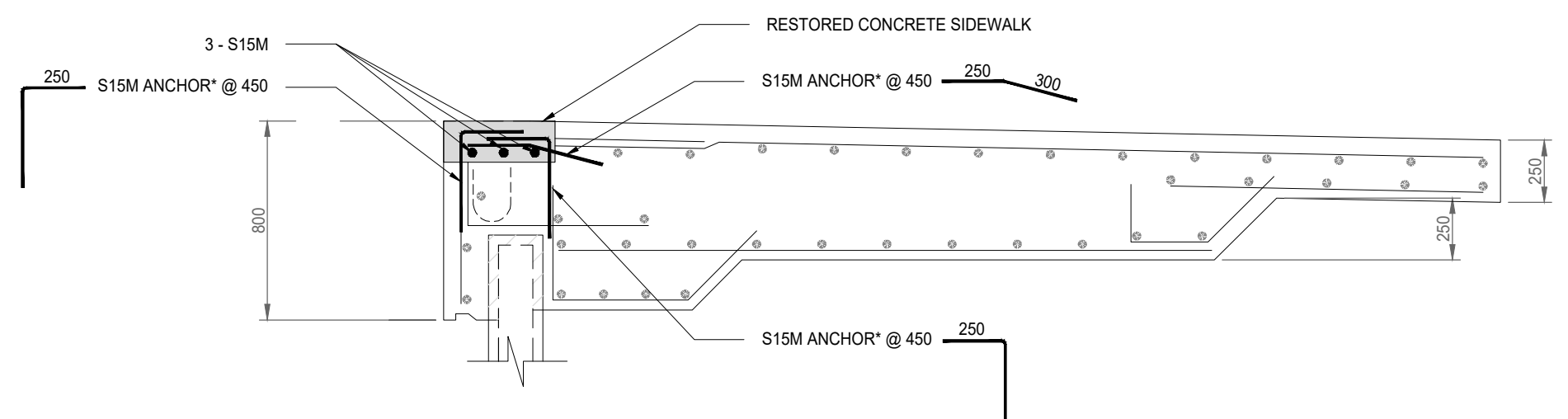
SOUTHEAST ELEVATION - EXISTING  
1200



SOUTHEAST ELEVATION - PROPOSED  
1200



SECTION - EXISTING  
1200



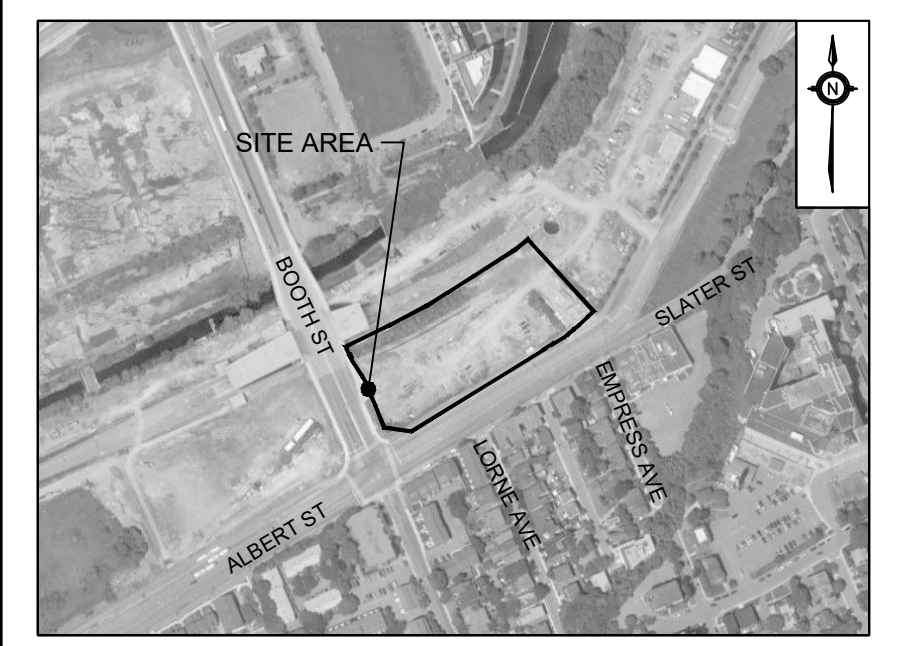
SECTION - PROPOSED  
1200

**LEGEND:**

	DEMOLITION
	NEW CONCRETE

**GENERAL NOTES:**

- DESIGN CODE**  
CSA-S6-19
- UNITS**  
DIMENSIONS ARE IN mm.
- SPECIFICATIONS**  
ONTARIO PROVINCIAL STANDARD SPECIFICATION:  
904 - CONCRETE STRUCTURE  
905 - STEEL REINFORCEMENT FOR CONCRETE  
919 - FORMWORK AND FLASEWORK  
929 - ABRASIVE BLAST CLEANING - CONCRETE CONSTRUCTION  
930 - STRUCTURAL REHABILITATION - CONCRETE PATCHES AND OVERLAYS  
1002 - AGGREGATES - CONCRETE  
1301 - CEMENTING MATERIALS  
1302 - WATER  
1303 - ADMIXTURES FOR CONCRETE  
1440 - STEEL REINFORCEMENT FOR CONCRETE  
  
CITY OF OTTAWA SPECIAL PROVISION:  
F-9040 CONCRETE STRUCTURES  
F-9043 CEMENTING MATERIALS  
F-9045 CONCRETE - MATERIALS AND PRODUCTION
- CLASS OF CONCRETE**  
CLASS OF CONCRETE SHALL BE IN ACCORDANCE WITH CSA A23.1.  
COMPONENT 28 DAYS COMPRESSIVE STRENGTH EXPOSURE CLASS  
SIDEWALK 35 MPa C-1  
  
THE RAPID CHLORINE PERMEABILITY OF CONCRETE SHALL NOT EXCEED 1000 COULOMBS AT 90 DAYS.
- CLEAR COVER TO REINFORCEMENT BAR**  
SIDEWALK 70mm ±20
- REINFORCEMENT BAR**  
EXISTING BAR MARKS WITH THE PREFIX 'G' DENOTE GFRP BAR.  
  
NEW BAR MARKS WITH THE PREFIX 'S' DENOTE STAINLESS STEEL BAR TYPE 316LN OR DUPLEX 2205 (420MPa).
- CONSTRUCTION NOTES**  
ALL MATERIALS SHALL BE IN ACCORDANCE WITH MTO DESIGNATED SOURCES FOR MATERIALS.
- REFERENCE DRAWINGS**  
AS-BUILD DRAWINGS REM-27-1-BSBR-DRD.



**KEY PLAN**  
N.T.S.  
ADDRESS:  
665 ALBERT STREET  
OTTAWA, ONTARIO

**LEGEND**  
SEE ABBREVIATIONS BELOW

**BENCHMARK:** ELEVATIONS ARE GEODETIC, IN METRES, AND DERIVED FROM THE CAN-NET VRS NETWORK MONUMENT: OTTAWA  
ELEVATION=95.230

**BEARING:** BEARINGS ARE GRID. DERIVED FROM THE CAN-NET VRS NETWORK OBSERVATIONS ON NCC HORZ CONTROL MONUMENTS 19773035 & 19680191, CENTRAL MERIDIAN, 76°30' W LONGITUDE MTM ZONE 9

**SITE PLAN:** KPMG, PERKINS & WILL

**SURVEY:** STANTEC GEOMATICS LTD., 220324

5			
4			
3			
2	ISSUED FOR REVIEW	230210	E.C.B.
1	ISSUED FOR REVIEW	221205	E.C.B.
NO.	ISSUE	DATE	BY

**DRAWING NOTES NOT FOR CONSTRUCTION**

- THIS DRAWING IS THE EXCLUSIVE PROPERTY OF THE MUNICIPAL INFRASTRUCTURE GROUP LTD (TMIG). THE REPRODUCTION OF ANY PART WITHOUT PRIOR WRITTEN CONSENT FROM TMIG IS STRICTLY PROHIBITED.
- THIS DRAWING IS TO BE READ AND UNDERSTOOD IN CONJUNCTION WITH ALL OTHER DRAWINGS AND DOCUMENTS APPLICABLE TO THIS PROJECT.
- THIS DRAWING IS NOT TO BE ISSUED FOR CONSTRUCTION UNTIL ALL REQUIRED PERMITS HAVE BEEN ISSUED.
- THE CONTRACTOR SHALL VERIFY ALL DIMENSIONS, ELEVATIONS, INVERTS AND DATA ON SITE AND REPORT ANY DISCREPANCIES OR OMISSIONS TO TMIG 48 HOURS PRIOR TO ANY CONSTRUCTION.

**ABBREVIATIONS**

GENERAL: PROP = PROPOSED EX = EXISTING	SERVICING: STM = STORM SAN = SANITARY WAT = WATER	HOPE = HIGH DENSITY POLYETHYLENE CONC = CONCRETE MH = MAINTENANCE HOLE CB = CATCH BASIN DCB = DOUBLE CATCH BASIN AD = AREA DRAIN TD = TRENCH DRAIN
ELEVATIONS: TC = TOP OF CURB BC = BOTTOM OF CURB	PVC = POLYVINYL CHLORIDE	



**SOUTHEAST CONCRETE PARAPET REMOVAL**

**LEBRETON LIBRARY PARCEL**  
**DREAM**

SCALE: NTS	PROJECT #
DATE: APRIL 2022	<b>10399</b>
DRAWN BY: A.N.	DRAWING #
DESIGNED BY: E.C.B.	<b>R1</b>
CHECKED BY: B.W.	