

**CONSULTANTS**

**civil**  
TMIG  
8800 Dufferin St., Suite 200, Vaughan, ON L4K 0C5

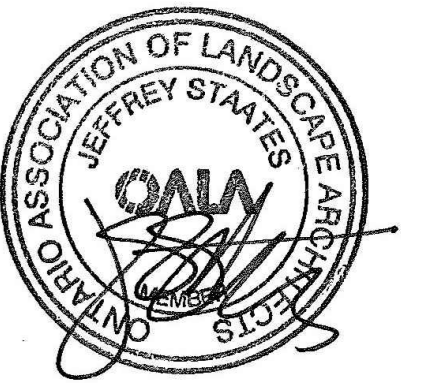
**STRUCTURAL**  
RJC Engineers  
1545 Carlin Ave., Suite 304, Ottawa, ON K1Z 8P9

**Smith+Andersen**  
1600 Carling Ave., Suite 530, Ottawa, ON K1Z 1G3

**LANDSCAPE**  
PFS Studio  
1777 W 3rd Ave., Vancouver, BC V6J 1KJ

**CONSULTANT**  
Two Row Architect  
1804 6th Line, Oshawa, ON N6A 1M0

**CONTRACTOR**  
Eli&Dan  
2680 Queensview Dr., Ottawa, ON K2B 6J9



PROJECT

**LEBRETON LIBRARY PARCEL**  
665 Albert St  
Ottawa, ON  
Canada



**DREAM**  
30 Adelaide St. E., Suite 301,  
Toronto, ON M5C 3H1  
KEYPLAN

ISSUED FOR SITE PLAN CONTROL - NOT FOR CONSTRUCTION 2023-03-24

ISSUE CHART

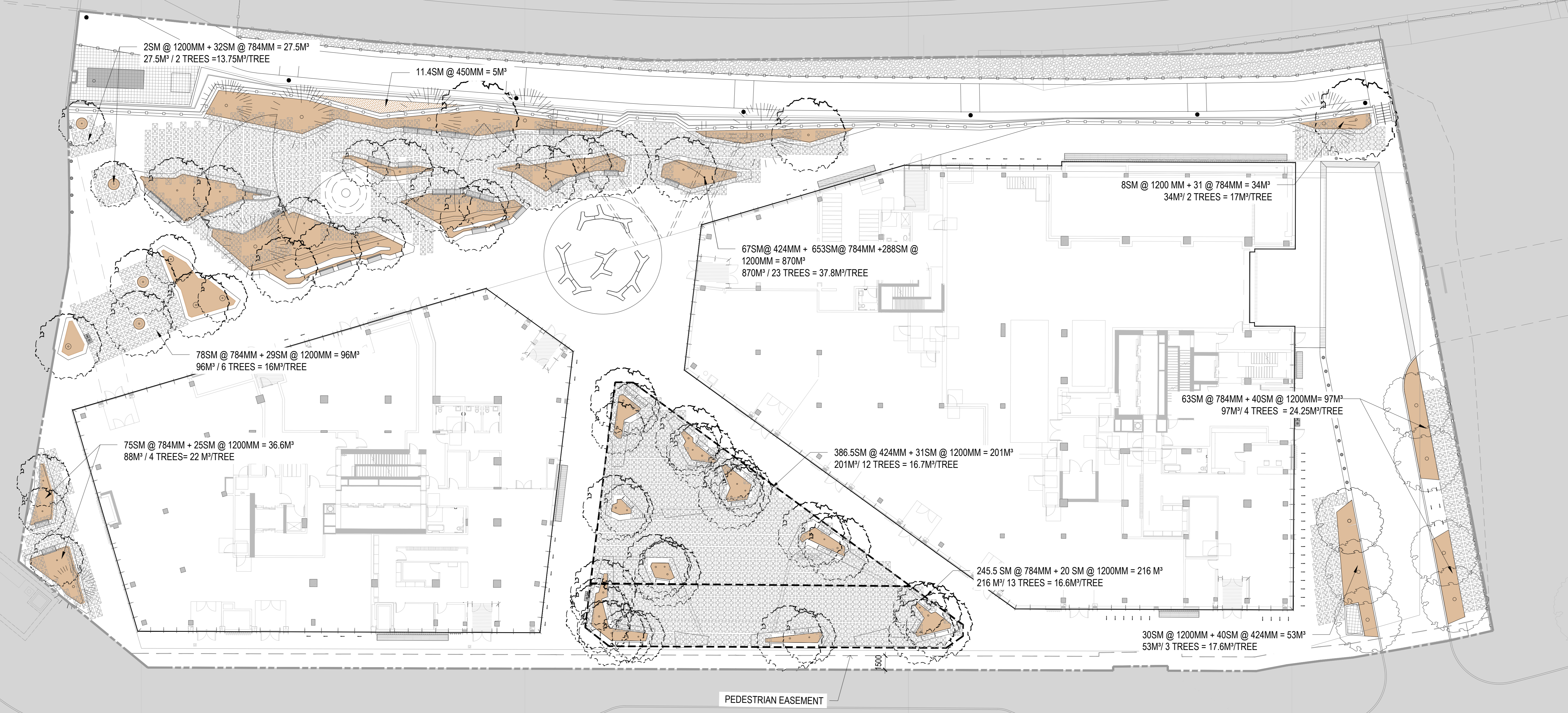
NO.	REVISION	DATE
1	ISSUED FOR SITE PLAN CONTROL	2023-03-24
2	REVISION FOR DATA ACQUISITION	2023-03-24
3	REVISION FOR DATA ACQUISITION	2023-03-24
4	REVISION FOR DATA ACQUISITION	2023-03-24

Job Number: \_\_\_\_\_ TITLE: \_\_\_\_\_

**SOIL PLAN**  
**GROUND LEVEL**

SHEET NUMBER

**L07-10**



- LEGEND**
- 1200 MM SOIL DEPTH (TREE PLANTING)
  - 450 MM SOIL DEPTH (SHRUB, PERENNIALS AND GRASS PLANTING)
  - TREE PLANTING SUBSTRATE

NOTE: TREE PLANTING SUBSTRATE WILL BE COMPRISED OF A MIXTURE OF SOIL CELLS, GROWING MEDIUM, AND STRUCTURAL SOILS SUFFICIENT TO PROVIDE REQUIRED SOIL VOLUMES FOR HEALTHY TREE ROOT NETWORKS.

*A. McCreight*

ANDREW MCCREIGHT  
MANAGER (A), DEVELOPMENT REVIEW CENTRAL  
PLANNING, REAL ESTATE & ECONOMIC DEVELOPMENT  
DEPARTMENT, CITY OF OTTAWA

**APPROVED**  
By Andrew McCreight at 2:08 pm, Dec 14, 2023

