

CONSULTANTS

- CIVIL**
TMIG
8800 Dufferin St., Suite 200, Vaughan, ON L4K 0C5
- STRUCTURAL**
RJC Engineers
1545 Carlin Ave., Suite 304, Ottawa, ON K1Z 9P9
- MEP**
Smith+Anderson
1600 Carling Ave., Suite 530, Ottawa, ON K1Z 1G3
- LANDSCAPING**
PFS Studio
1777 W 3rd Ave., Vancouver, BC V5U 1KJ
- CONSULTANT**
Two Row Architect
1804 6th Line, Oshawa, ON N4A 1M0
- CONTRACTOR**
EliSDon
2680 Queensview Dr., Ottawa, ON K2B 6J9

STAMP

Andrew McCreight
ANDREW MCCREIGHT
MANAGER (A), DEVELOPMENT REVIEW CENTRAL
PLANNING, REAL ESTATE & ECONOMIC DEVELOPMENT
DEPARTMENT, CITY OF OTTAWA

APPROVED
By Andrew McCreight at 2:04 pm, Dec 14, 2023

ELEVATIONS LEGEND

- MP-01 PREFINISHED ALUMINUM PLATE (PT-101)
- MP-02 PREFINISHED ALUMINUM PLATE (PT-102)
- MP-03 PREFINISHED ALUMINUM PLATE (PT-103)
- MP-04 PREFINISHED ALUMINUM PLATE (PT-104)
- MP-05 PREFINISHED ALUMINUM PLATE (PT-105)
- PT-106 PREFINISHED ALUMINUM
- PT-107 PREFINISHED ALUMINUM
- STN-01 CUT GRANITE
- IGU-01A/IGU-02A/IGU-03A VISION GLAZING (NOTE 1)
- IGU-01B/TPG-01/TPG-02 SPANDREL GLAZING (NOTE 1)
- WS-01/WS-02 WIND & NOISE BARRIER, VISION GLASS (NOTE 1)
- PS-01 PRIVACY SCREEN, PATTERNED GLASS (NOTE 1)
- LV-01 WINDOW WALL LOUVER (PT-108)
- LV-02 PREFINISHED ALUMINUM PERFORATED LOUVER (PT-108)
- LV-03 PREFINISHED ALUMINUM LOUVER WITHIN SOFFIT (PT-108)
- FIN-01 VERTICAL SOLAR SHADE, GLAZED/OPAQUE BEHIND AS NOTED (PT-106)
- SF-01 WESTERN HEMLOCK EXTERIOR WOOD SOFFIT
- SF-02 PREFINISHED ALUMINUM PLATE SOFFIT (TO MATCH AG-01)
- SF-03 PREFINISHED ALUMINUM PLATE SOFFIT (PT-108)
- WWS-01 WINDOW WALL PODIUM (PT-106 & 108)
- WWS-02 WINDOW WALL TOWER REVEAL (PT-108)
- WWS-03 WINDOW WALL TOWER (PT-108)
- CWS-01 CURTAIN WALL SYSTEM (PT-106)
- CH-01 DECORATIVE ALUMINUM EXTRUSION CHANNEL (PT-108)
- BIPV-01 BUILDING INTEGRATED PHOTOVOLTAIC PANELS
- AG-01 PREFINISHED ALUMINUM PLATE, CUSTOM PERFORATED
- AG-02 PICKET GUARD

NOTE
1. REFER TO A70 SERIES FOR BIRD COLLISION DETERRENCE DRAWINGS FOR BIRD COLLISION DETERRENCE STRATEGIES AND ASSOCIATED EXTENTS

PROJECT

LEBRETON LIBRARY PARCEL
665 Albert St
Ottawa, ON
Canada



DREAM
30 Adelaide St. E., Suite 301,
Toronto, ON M5C 3H1
KEYPLAN



ISSUE CHART

NO.	ISSUE	DATE
4	ISSUED FOR 6/6/21 DD	2023-09-19
10	ISSUED FOR ELEVATOR & EXCAVATION TENDER	2023-01-27
12	ISSUED FOR FOUNDATION PERMIT	2023-02-17
14	ISSUED FOR PROGRESS REVIEW	2023-03-03
15	ISSUED FOR SITE PLAN CONTROL	2023-03-24

ISSUED FOR SITE PLAN CONTROL 2023-03-24

Job Number 44200
TITLE

OVERALL NORTH ELEVATION

SHEET NUMBER

A20-01

© 2022 KPMB and Perkins & Will

DOT-12-22-0069



1 NORTH ELEVATION
1 : 200

A:\2023\12\15\11\Lebreton Library\Arch\Drawn - Lebreton - 022 - Program.rvt

3/24/2023 3:35:51 PM

#18916

CONSULTANTS

CIVIL
TMIG
8800 Dufferin St., Suite 200, Vaughan, ON L4K 0C5

STRUCTURAL
RJC Engineers
1545 Carlin Ave., Suite 304, Ottawa, ON K1Z 9P9

MEP
Smith+Anderson
1600 Carling Ave., Suite 530, Ottawa, ON K1Z 1G3

LANDSCAPING
PFS Studio
1777 W 3rd Ave., Vancouver, BC V6J 1K1

CONSULTANT
Two Row Architect
1804 6th Line, Oshawa, ON N4A 1M0

CONTRACTOR
EllisDon
2680 Queensview Dr., Ottawa, ON K2B 6J9

STAMP

PROJECT

**LEBRETON LIBRARY
PARCEL**
665 Albert St
Ottawa, ON
Canada



DREAM
30 Adelaide St. E., Suite 301,
Toronto, ON M5C 3H1
KEYPLAN



ISSUE CHART

NO.	ISSUE	DATE
4	ISSUED FOR 16% DD	2023-08-19
70	ISSUED FOR ELEVATOR & EXCAVATION TENDER	2023-01-27
12	ISSUED FOR FOUNDATION PERMIT	2023-02-17
14	ISSUED FOR PROGRESS REVIEW	2023-03-03
15	ISSUED FOR SITE PLAN CONTROL	2023-03-24

ISSUED FOR SITE PLAN CONTROL 2023-03-24

ELEVATIONS LEGEND

- MP-01 PREFINISHED ALUMINUM PLATE (PT-101)
- MP-02 PREFINISHED ALUMINUM PLATE (PT-102)
- MP-03 PREFINISHED ALUMINUM PLATE (PT-103)
- MP-04 PREFINISHED ALUMINUM PLATE (PT-104)
- MP-05 PREFINISHED ALUMINUM PLATE (PT-105)
- PT-106 PREFINISHED ALUMINUM
- PT-107 PREFINISHED ALUMINUM

- STN-01 CUT GRANITE

- IGU-01A/IGU-02A/IGU-03A VISION GLAZING (NOTE 1)
- IGU-01B/TPG-01/TPG-02 SPANDREL GLAZING (NOTE 1)

- WS-01/WS-02 WIND & NOISE BARRIER, VISION GLASS (NOTE 1)
- PS-01 PRIVACY SCREEN, PATTERNED GLASS (NOTE 1)

- LV-01 WINDOW WALL LOUVER (PT-108)
- LV-02 PREFINISHED ALUMINUM PERFORATED LOUVER (PT-108)
- LV-03 PREFINISHED ALUMINUM LOUVER WITHIN SOFFIT (PT-108)

- FIN-01 VERTICAL SOLAR SHADE, GLAZED/OPAQUE BEHIND AS NOTED (PT-106)

- SF-01 WESTERN HEMLOCK EXTERIOR WOOD SOFFIT
- SF-02 PREFINISHED ALUMINUM PLATE SOFFIT (TO MATCH AG-01)
- SF-03 PREFINISHED ALUMINUM PLATE SOFFIT (PT-108)

- WWS-01 WINDOW WALL PODIUM (PT-106 & 108)
- WWS-02 WINDOW WALL TOWER REVEAL (PT-108)
- WWS-03 WINDOW WALL TOWER (PT-108)

- CWS-01 CURTAIN WALL SYSTEM (PT-106)

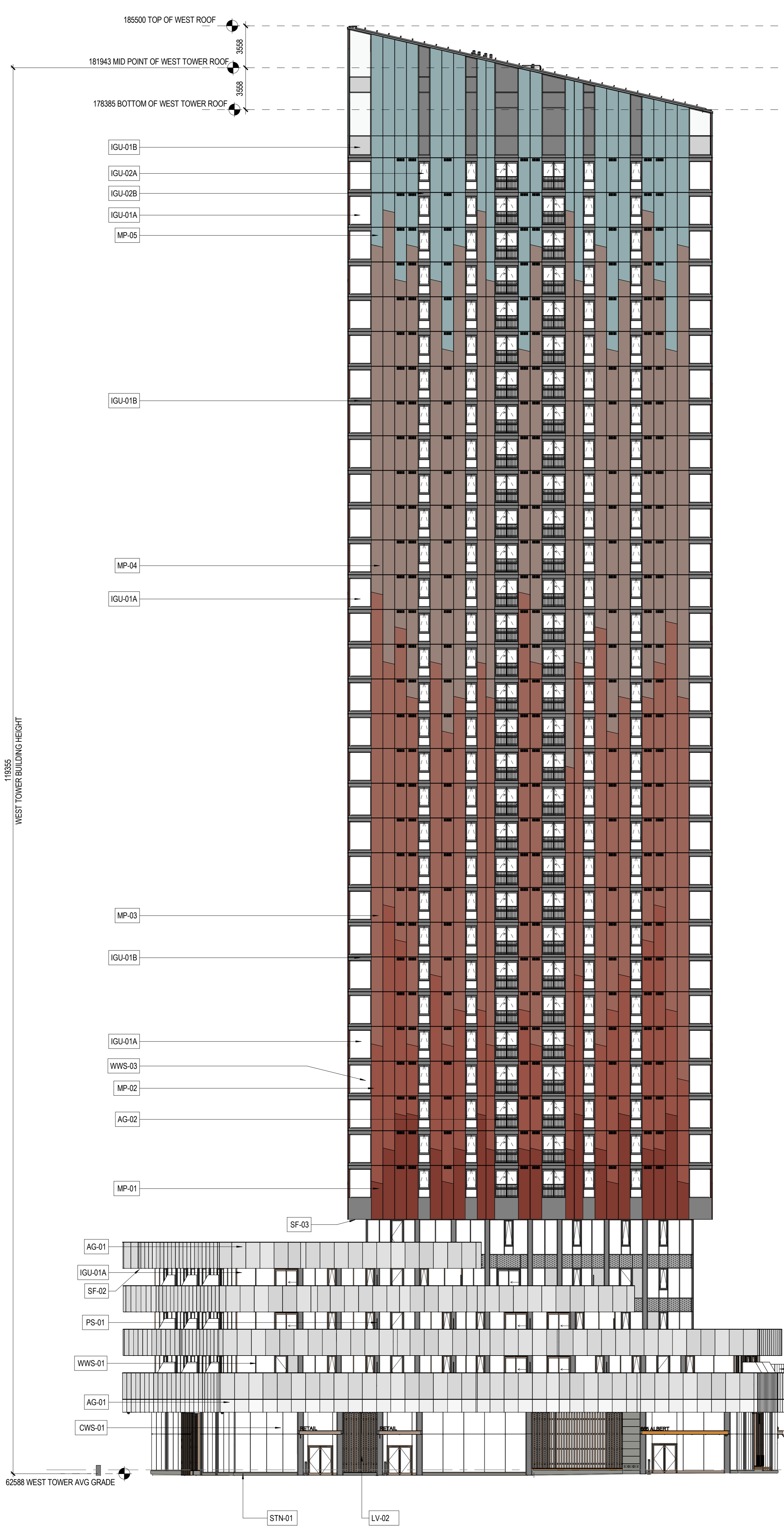
- CH-01 DECORATIVE ALUMINUM EXTRUSION CHANNEL (PT-108)

- BIPV-01 BUILDING INTEGRATED PHOTOVOLTAIC PANELS

- AG-01 PREFINISHED ALUMINUM PLATE, CUSTOM PERFORATED
- AG-02 PICKET GUARD

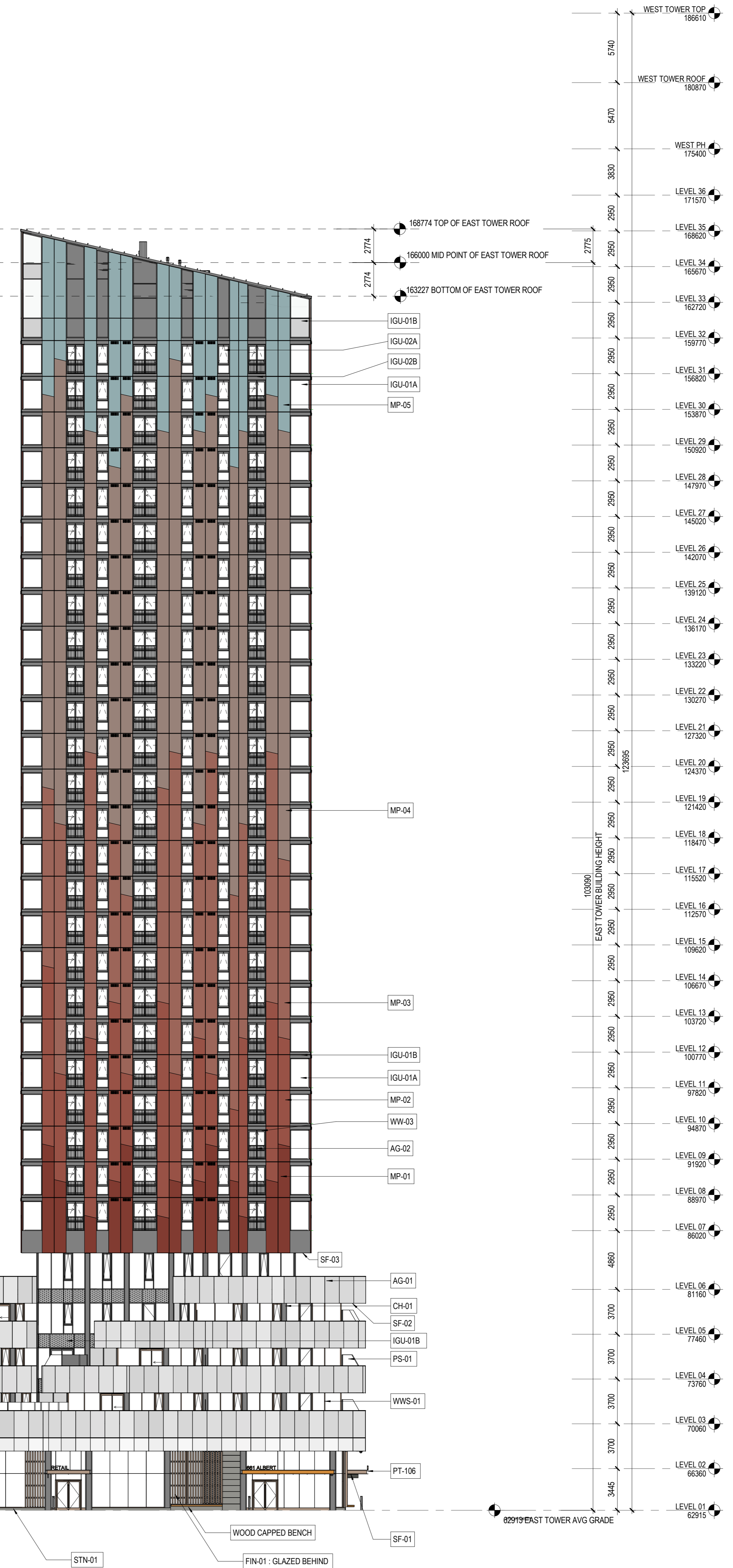
NOTE
1. REFER TO A70 SERIES FOR BIRD COLLISION DETERRENCE DRAWINGS FOR BIRD COLLISION DETERRENCE STRATEGIES AND ASSOCIATED EXTENTS

U T S R Q P N M L K J G F E D C B A PA PB PC



Andrew McCreight
ANDREW MCCREIGHT
MANAGER (A), DEVELOPMENT REVIEW CENTRAL
PLANNING, REAL ESTATE & ECONOMIC DEVELOPMENT
DEPARTMENT, CITY OF OTTAWA

APPROVED
By Andrew McCreight at 2:04 pm, Dec 14, 2023



1 SOUTH ELEVATION
1 : 200

**OVERALL SOUTH
ELEVATION**

SHEET NUMBER

A20-02

© 2022 KPMB and Perkins & Will

CONSULTANTS

- CIVIL**
TMIG
8800 Dufferin St., Suite 200, Vaughan, ON L4K 0G5
- STRUCTURAL**
RJC Engineers
1545 Carlin Ave., Suite 304, Ottawa, ON K1Z 9P9
- MEP**
Smith+Anderson
1600 Carling Ave., Suite 530, Ottawa, ON K1Z 1G3
- LANDSCAPING**
PFS Studio
1777 W 3rd Ave., Vancouver, BC V6J 1K1
- CONSULTANT**
Two Row Architect
1804 6th Line, Oshawa, ON N4A 1M0
- CONTRACTOR**
EllisDon
2680 Queensview Dr., Ottawa, ON K2B 6J9

STAMP

Andrew McCreight
ANDREW MCCREIGHT
MANAGER (A), DEVELOPMENT REVIEW CENTRAL
PLANNING, REAL ESTATE & ECONOMIC DEVELOPMENT
DEPARTMENT, CITY OF OTTAWA

APPROVED
By Andrew McCreight at 2:04 pm, Dec 14, 2023

ELEVATIONS LEGEND

- MP-01 PREFINISHED ALUMINUM PLATE (PT-101)
- MP-02 PREFINISHED ALUMINUM PLATE (PT-102)
- MP-03 PREFINISHED ALUMINUM PLATE (PT-103)
- MP-04 PREFINISHED ALUMINUM PLATE (PT-104)
- MP-05 PREFINISHED ALUMINUM PLATE (PT-105)
- PT-106 PREFINISHED ALUMINUM
- PT-107 PREFINISHED ALUMINUM
- STN-01 CUT GRANITE
- IGU-01A/IGU-02A/IGU-03A VISION GLAZING (NOTE 1)
- IGU-01B/TPG-01/TPG-02 SPANDREL GLAZING (NOTE 1)
- WS-01/WS-02 WIND & NOISE BARRIER, VISION GLASS (NOTE 1)
- PS-01 PRIVACY SCREEN, PATTERNED GLASS (NOTE 1)
- LV-01 WINDOW WALL LOUVER (PT-108)
- LV-02 PREFINISHED ALUMINUM PERFORATED LOUVER (PT-108)
- LV-03 PREFINISHED ALUMINUM LOUVER WITHIN SOFFIT (PT-108)
- FIN-01 VERTICAL SOLAR SHADE, GLAZED/OPAQUE BEHIND AS NOTED (PT-106)
- SF-01 WESTERN HEMLOCK EXTERIOR WOOD SOFFIT
- SF-02 PREFINISHED ALUMINUM PLATE SOFFIT (TO MATCH AG-01)
- SF-03 PREFINISHED ALUMINUM PLATE SOFFIT (PT-108)
- WWS-01 WINDOW WALL PODIUM (PT-106 & 108)
- WWS-02 WINDOW WALL TOWER REVEAL (PT-108)
- WWS-03 WINDOW WALL TOWER (PT-108)
- CWS-01 CURTAIN WALL SYSTEM (PT-106)
- CH-01 DECORATIVE ALUMINUM EXTRUSION CHANNEL (PT-108)
- BIPV-01 BUILDING INTEGRATED PHOTOVOLTAIC PANELS
- AG-01 PREFINISHED ALUMINUM PLATE, CUSTOM PERFORATED
- AG-02 PICKET GUARD

NOTE
1. REFER TO A70 SERIES FOR BIRD COLLISION DETERRENCE DRAWINGS FOR BIRD COLLISION DETERRENCE STRATEGIES AND ASSOCIATED EXTENTS

PROJECT

LEBRETON LIBRARY PARCEL
665 Albert St
Ottawa, ON
Canada



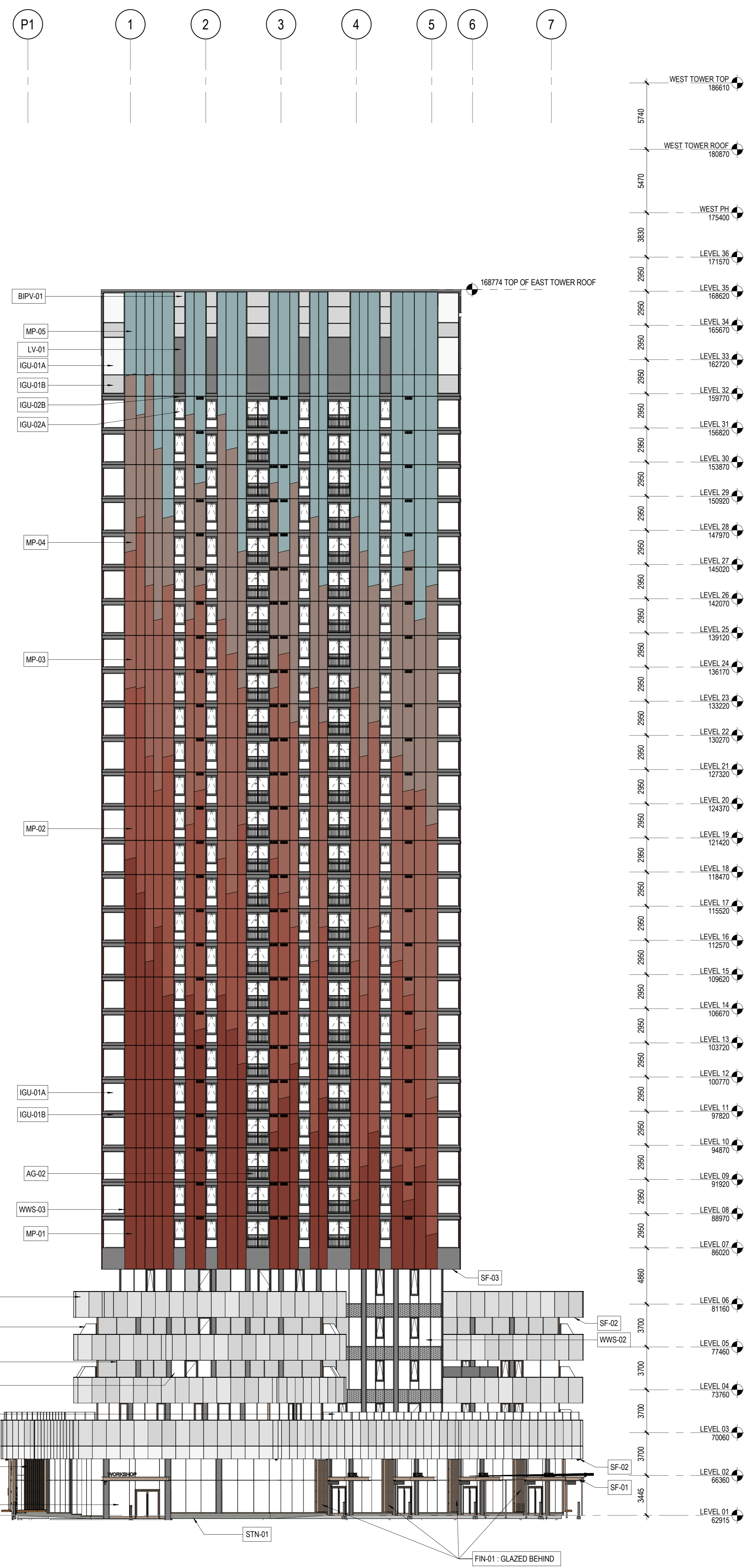
DREAM
30 Adelaide St. E., Suite 301,
Toronto, ON M5C 3H1
KEYPLAN



ISSUE CHART

NO.	ISSUE	DATE
4	ISSUED FOR 66% DD	2023-08-19
7	ISSUED FOR ELEVATOR & EXCAVATION TENDER	2023-01-27
12	ISSUED FOR FOUNDATION PERMIT	2023-02-17
14	ISSUED FOR PROGRESS REVIEW	2023-03-03
15	ISSUED FOR SITE PLAN CONTROL	2023-03-24

ISSUED FOR SITE PLAN CONTROL 2023-03-24



1 EAST TOWER, WEST ELEVATION
1:200



2 EAST TOWER, EAST ELEVATION
1:200

CONSULTANTS

- CIVIL**
TMIG
8800 Dufferin St., Suite 200, Vaughan, ON L4K 0G5
- STRUCTURAL**
RJC Engineers
1545 Carlin Ave., Suite 304, Ottawa, ON K1Z 9P9
- MEP**
Smith+Anderson
1600 Carling Ave., Suite 530, Ottawa, ON K1Z 1G3
- LANDSCAPING**
PFS Studio
1777 W 3rd Ave., Vancouver, BC V5U 1KJ
- CONSULTANT**
Two Row Architect
1804 6th Line, Oshawa, ON N4A 1M0
- CONTRACTOR**
EllisDon
2680 Queensview Dr., Ottawa, ON K2B 6J9

STAMP

PROJECT

**LEBRETON LIBRARY
PARCEL**
665 Albert St
Ottawa, ON
Canada



DREAM
30 Adelaide St. E., Suite 301,
Toronto, ON M5C 3H1
KEYPLAN



ISSUE CHART

NO.	ISSUE	DATE
4	ISSUED FOR 16% DD	2023-08-19
10	ISSUED FOR ELEVATOR & EXCAVATION TENDER	2023-01-27
12	ISSUED FOR FOUNDATION PERMIT	2023-02-17
14	ISSUED FOR PROGRESS REVIEW	2023-03-03
15	ISSUED FOR SITE PLAN CONTROL	2023-03-24

ISSUED FOR SITE PLAN CONTROL 2023-03-24

ELEVATIONS LEGEND

- MP-01 PREFINISHED ALUMINUM PLATE (PT-101)
- MP-02 PREFINISHED ALUMINUM PLATE (PT-102)
- MP-03 PREFINISHED ALUMINUM PLATE (PT-103)
- MP-04 PREFINISHED ALUMINUM PLATE (PT-104)
- MP-05 PREFINISHED ALUMINUM PLATE (PT-105)
- PT-106 PREFINISHED ALUMINUM
- PT-107 PREFINISHED ALUMINUM
- STN-01 CUT GRANITE
- IGU-01A/IGU-02A/IGU-03A VISION GLAZING (NOTE 1)
- IGU-01B/TPG-01/TPG-02 SPANDREL GLAZING (NOTE 1)
- WS-01/WS-02 WIND & NOISE BARRIER, VISION GLASS (NOTE 1)
- PS-01 PRIVACY SCREEN, PATTERNED GLASS (NOTE 1)
- LV-01 WINDOW WALL LOUVER (PT-108)
- LV-02 PREFINISHED ALUMINUM PERFORATED LOUVER (PT-108)
- LV-03 PREFINISHED ALUMINUM LOUVER WITHIN SOFFIT (PT-108)
- FIN-01 VERTICAL SOLAR SHADE, GLAZED/OPAQUE BEHIND AS NOTED (PT-106)
- SF-01 WESTERN HEMLOCK EXTERIOR WOOD SOFFIT
- SF-02 PREFINISHED ALUMINUM PLATE SOFFIT (TO MATCH AG-01)
- SF-03 PREFINISHED ALUMINUM PLATE SOFFIT (PT-108)
- WWS-01 WINDOW WALL PODIUM (PT-106 & 108)
- WWS-02 WINDOW WALL TOWER REVEAL (PT-108)
- WWS-03 WINDOW WALL TOWER (PT-108)
- CWS-01 CURTAIN WALL SYSTEM (PT-106)
- CH-01 DECORATIVE ALUMINUM EXTRUSION CHANNEL (PT-108)
- BIPV-01 BUILDING INTEGRATED PHOTOVOLTAIC PANELS
- AG-01 PREFINISHED ALUMINUM PLATE, CUSTOM PERFORATED
- AG-02 PICKET GUARD

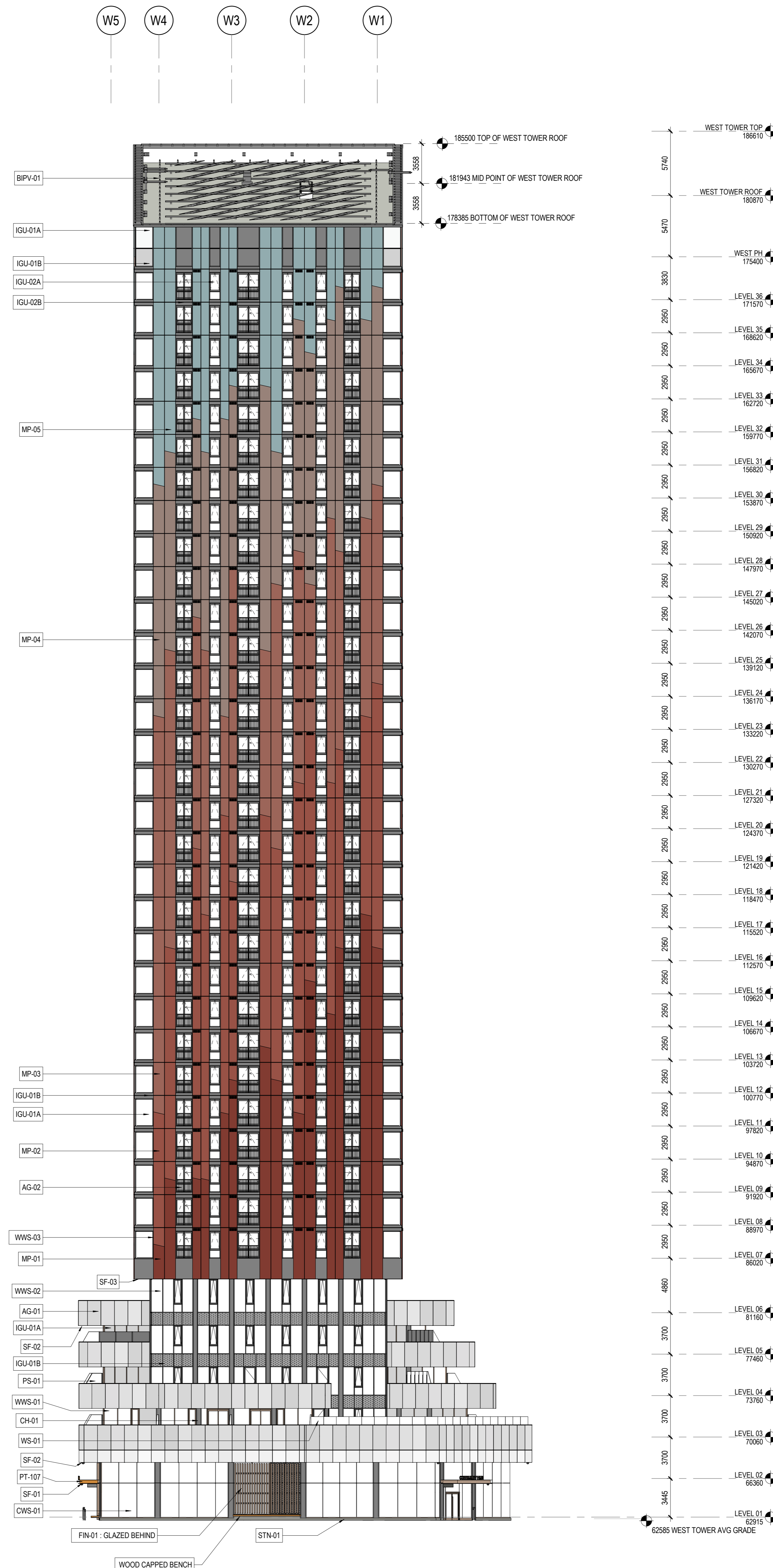
NOTE
1. REFER TO A70 SERIES FOR BIRD COLLISION DETERRENCE DRAWINGS FOR BIRD COLLISION DETERRENCE STRATEGIES AND ASSOCIATED EXTENTS

Andrew McCreight
ANDREW MCCREIGHT
MANAGER (A), DEVELOPMENT REVIEW CENTRAL
PLANNING, REAL ESTATE & ECONOMIC DEVELOPMENT
DEPARTMENT, CITY OF OTTAWA

APPROVED
By Andrew McCreight at 2:04 pm, Dec 14, 2023



1 WEST TOWER, WEST ELEVATION
1 : 200



2 WEST TOWER, EAST ELEVATION
1 : 200