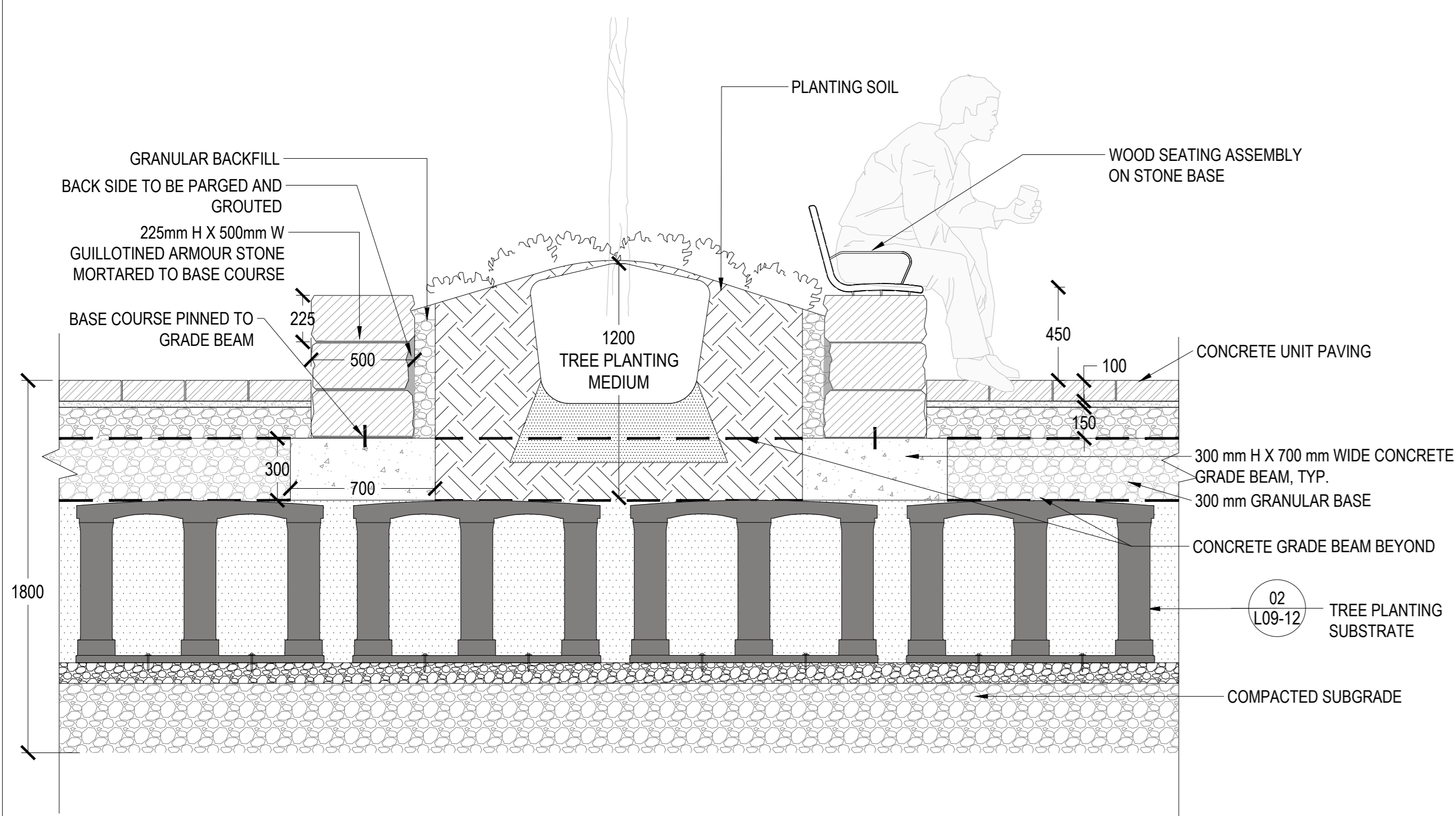
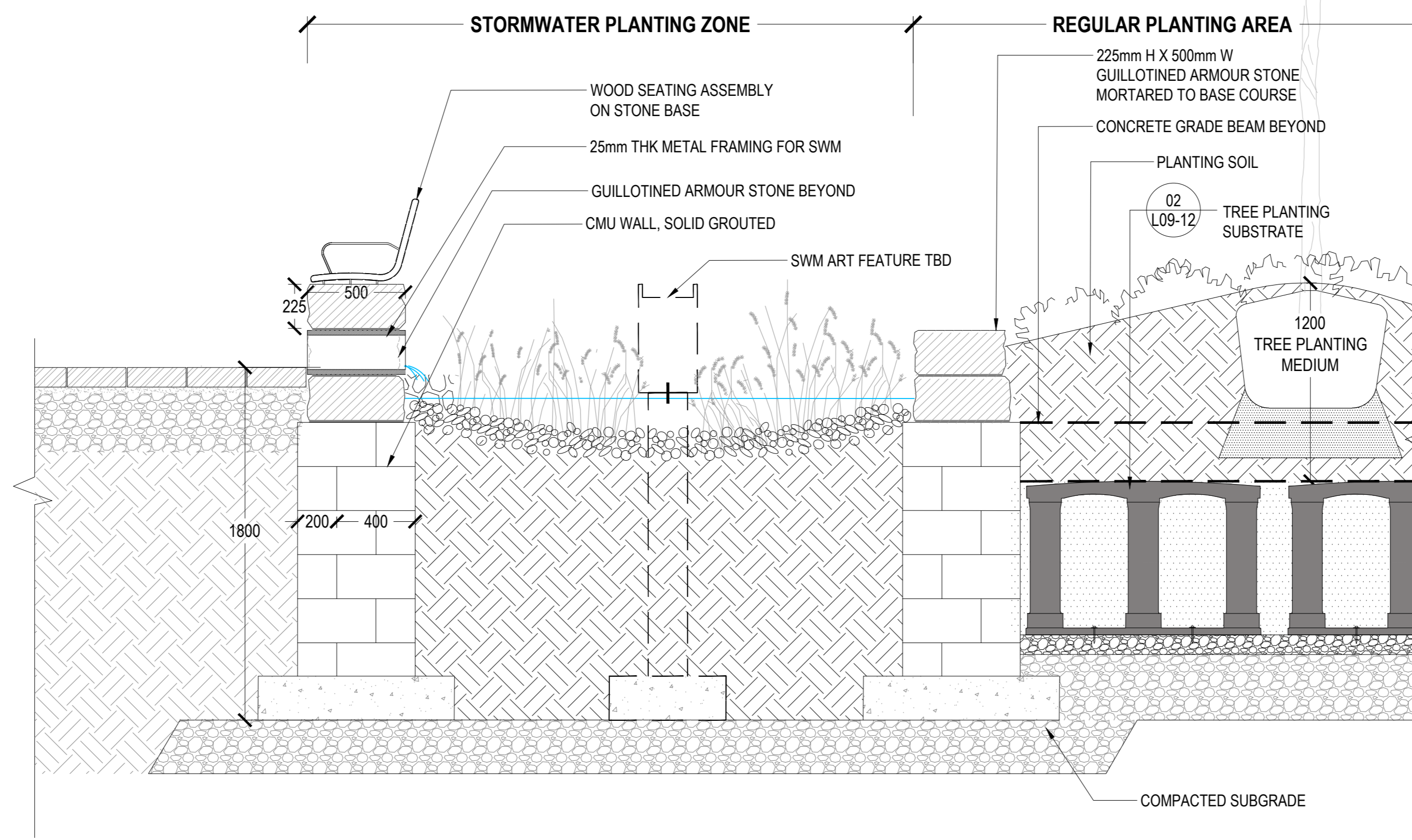


NOTE: TREE PLANTING SUBSTRATE WILL BE COMPRISED OF A MIXTURE OF SOIL CELLS, GROWING MEDIUM, AND STRUCTURAL SOILS SUFFICIENT TO PROVIDE REQUIRED SOIL VOLUMES FOR HEALTHY TREE ROOT NETWORKS.



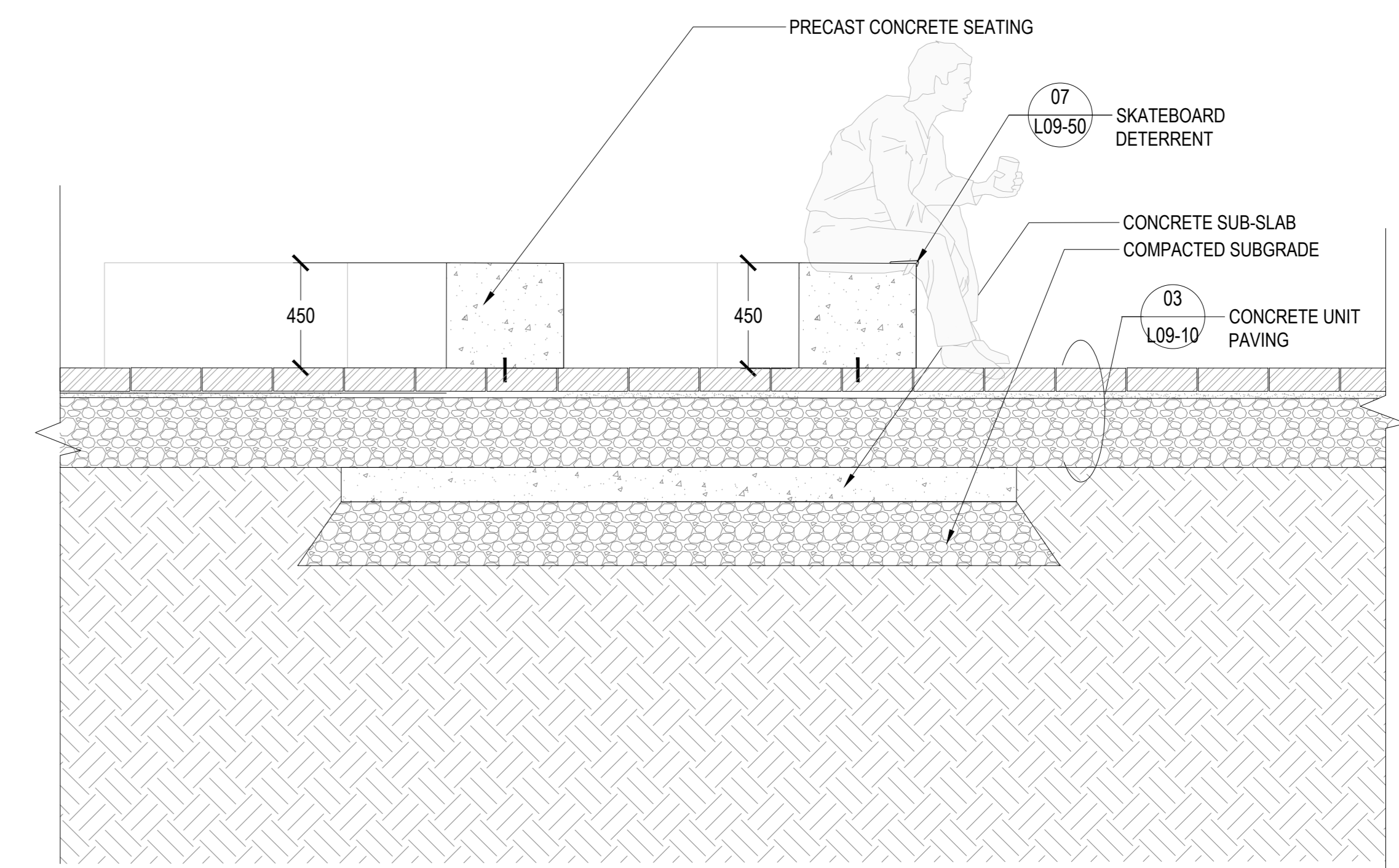
01 WOODTOP SEATING AT WEDGE PARK

SCALE: 1:20



02 STORMWATER PLANTER AT WEDGE PARK

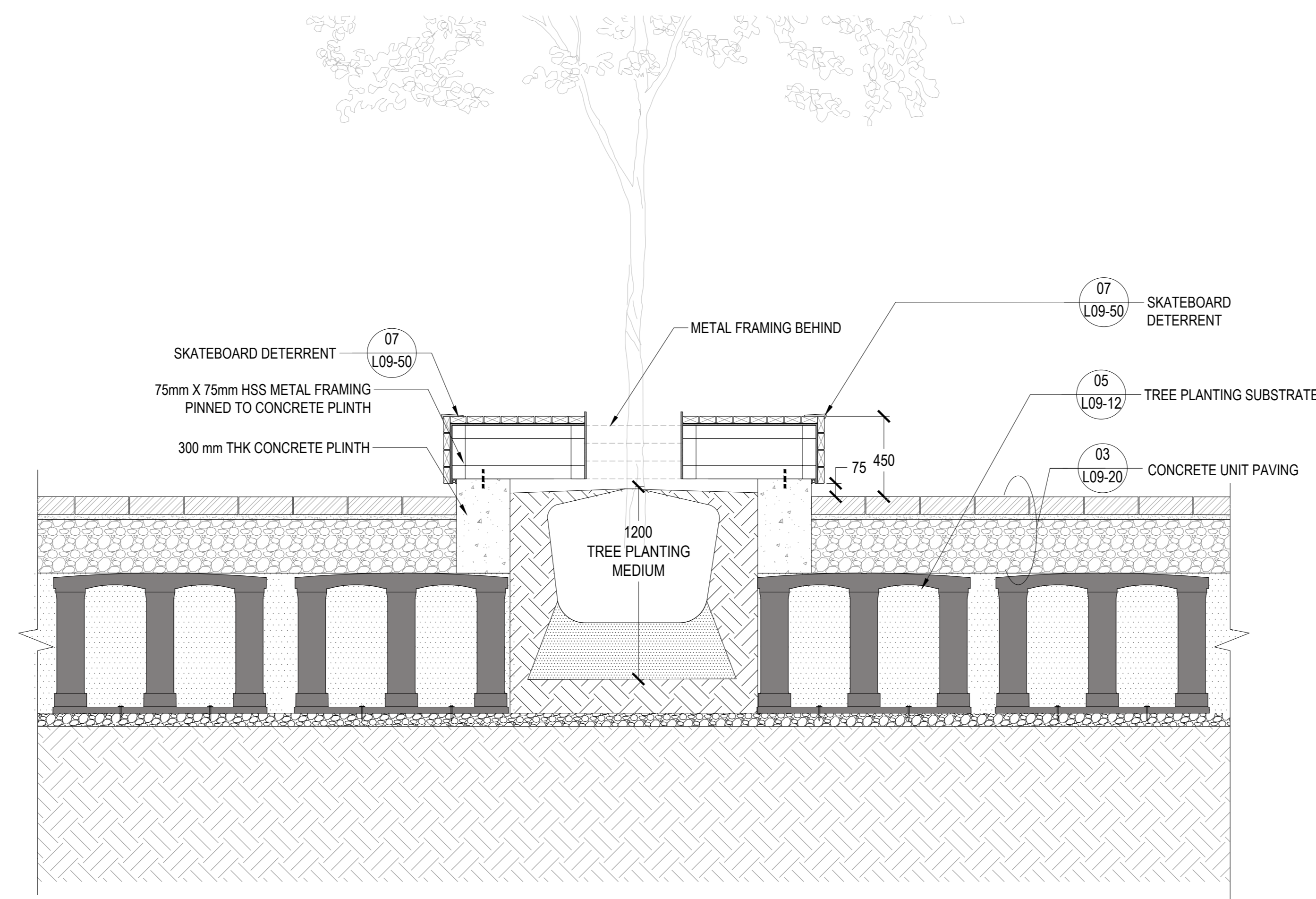
SCALE: 1:20



03 CONCRETE SEATING AT GATHERING CIRCLE

SCALE: 1:20

DELETED

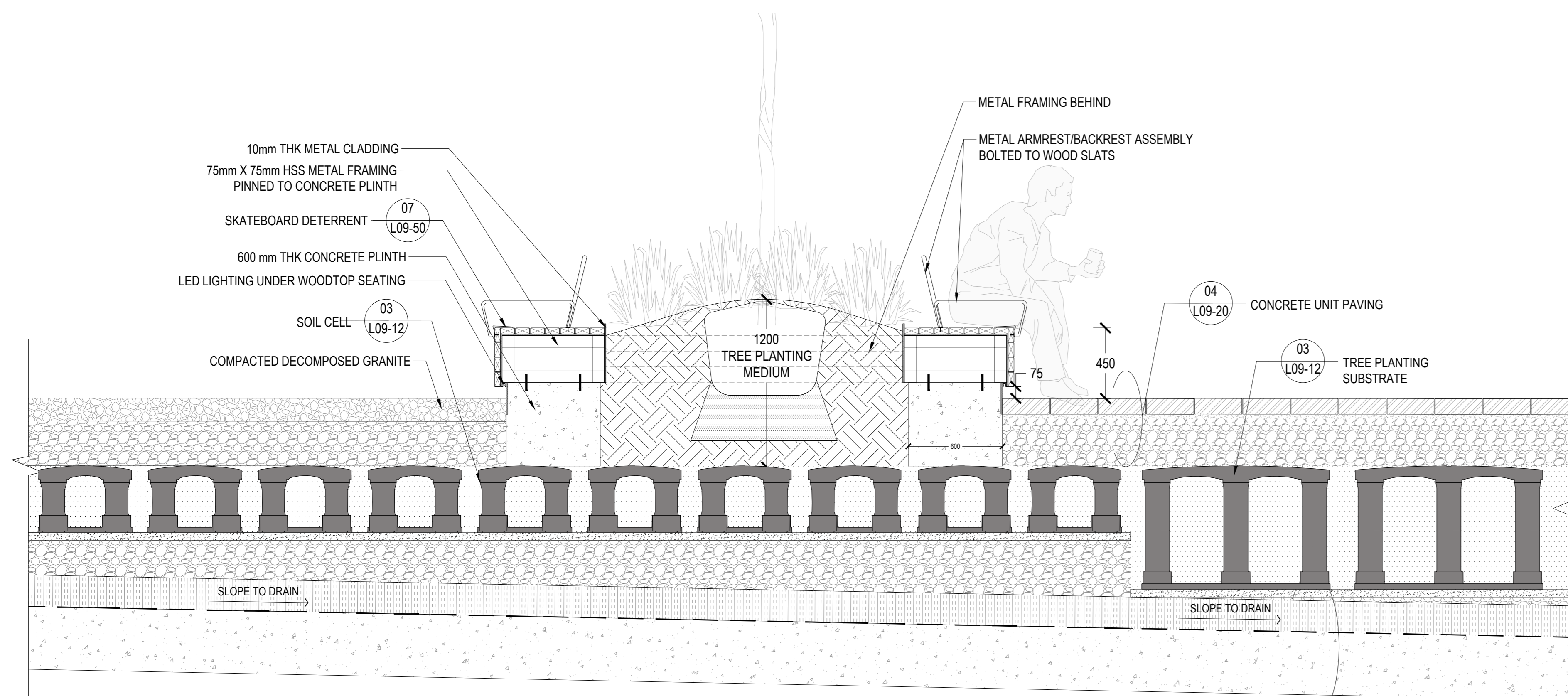


05 WOODTOP SEATING PLATFORM AT PIMISI PLAZA

SCALE: 1:20

04 SEATING WALL AT SIDEWALK

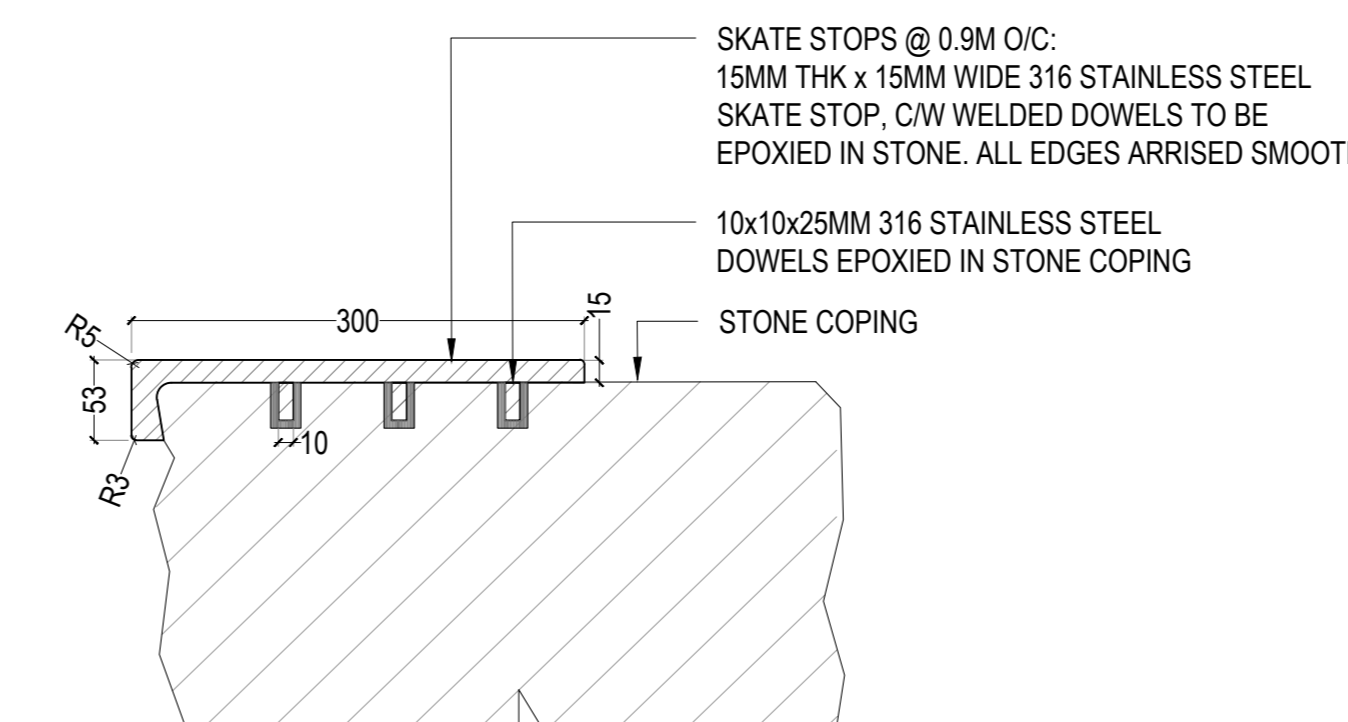
SCALE: 1:20



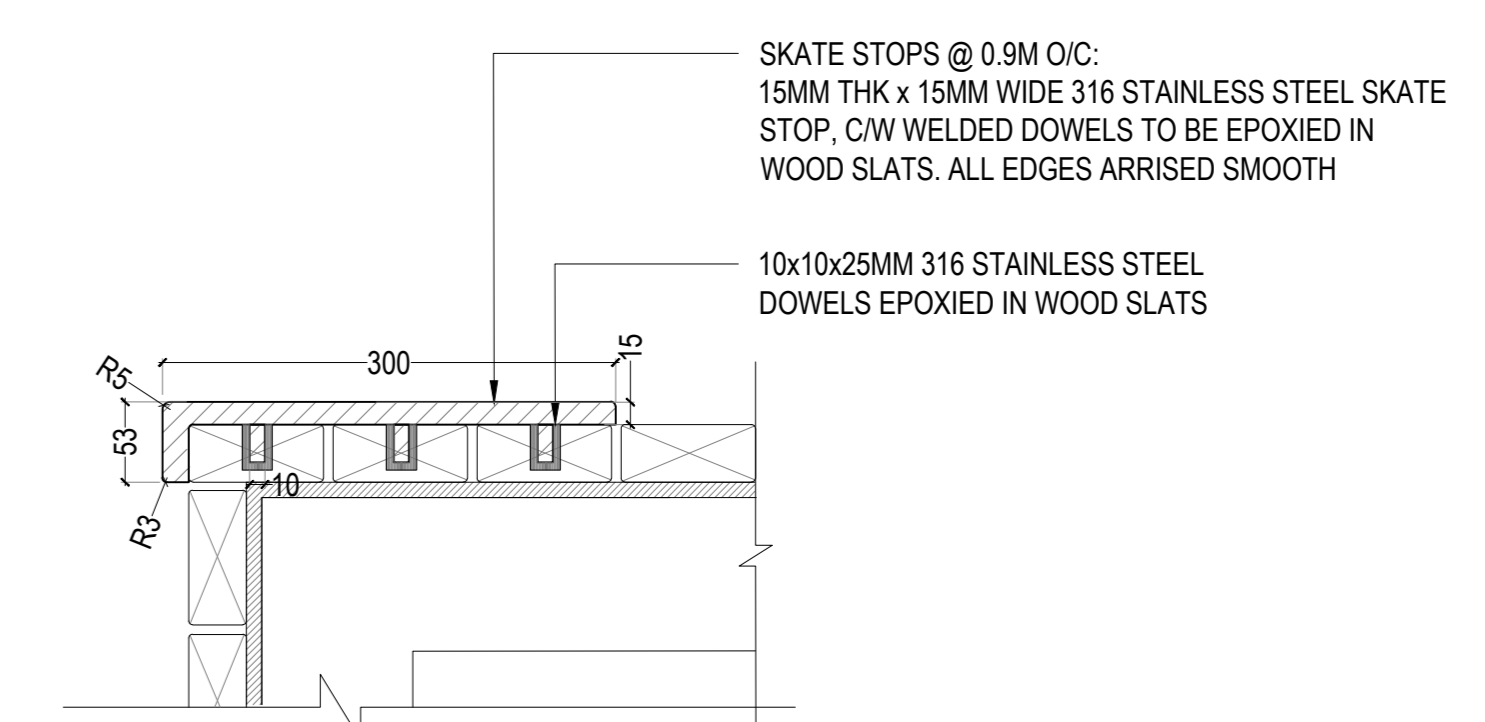
06 SEATING WALL AT 'BOSQUE' PARKETTE

SCALE: 1:20

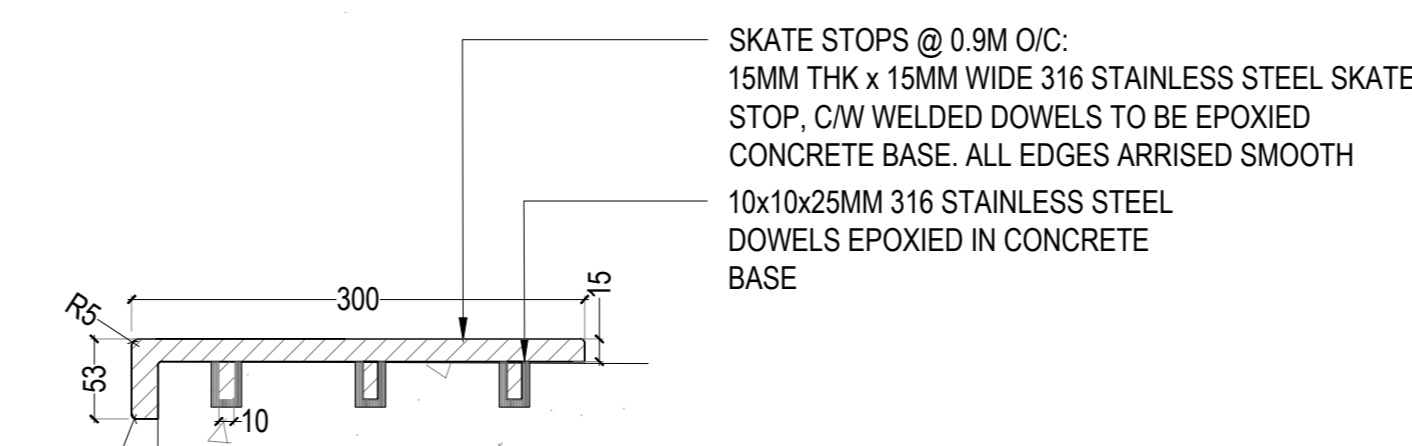
ASSEMBLY ABOVE STRUCTURAL SLAB REFER TO ARCHITECTURAL AND STRUCTURAL



ON STONE WALL CLADDING



ON WOODTOP SEATING



ON CONCRETE SEATING

07 SKATE DETERRENT DETAIL

SCALE: 1:5

ANDREW MCCREIGHT
MANAGER (A), DEVELOPMENT REVIEW CENTRAL
PLANNING, REAL ESTATE & ECONOMIC DEVELOPMENT
DEPARTMENT, CITY OF OTTAWA

APPROVED
By Andrew McCreight at 2:08 pm, Dec 14, 2023

