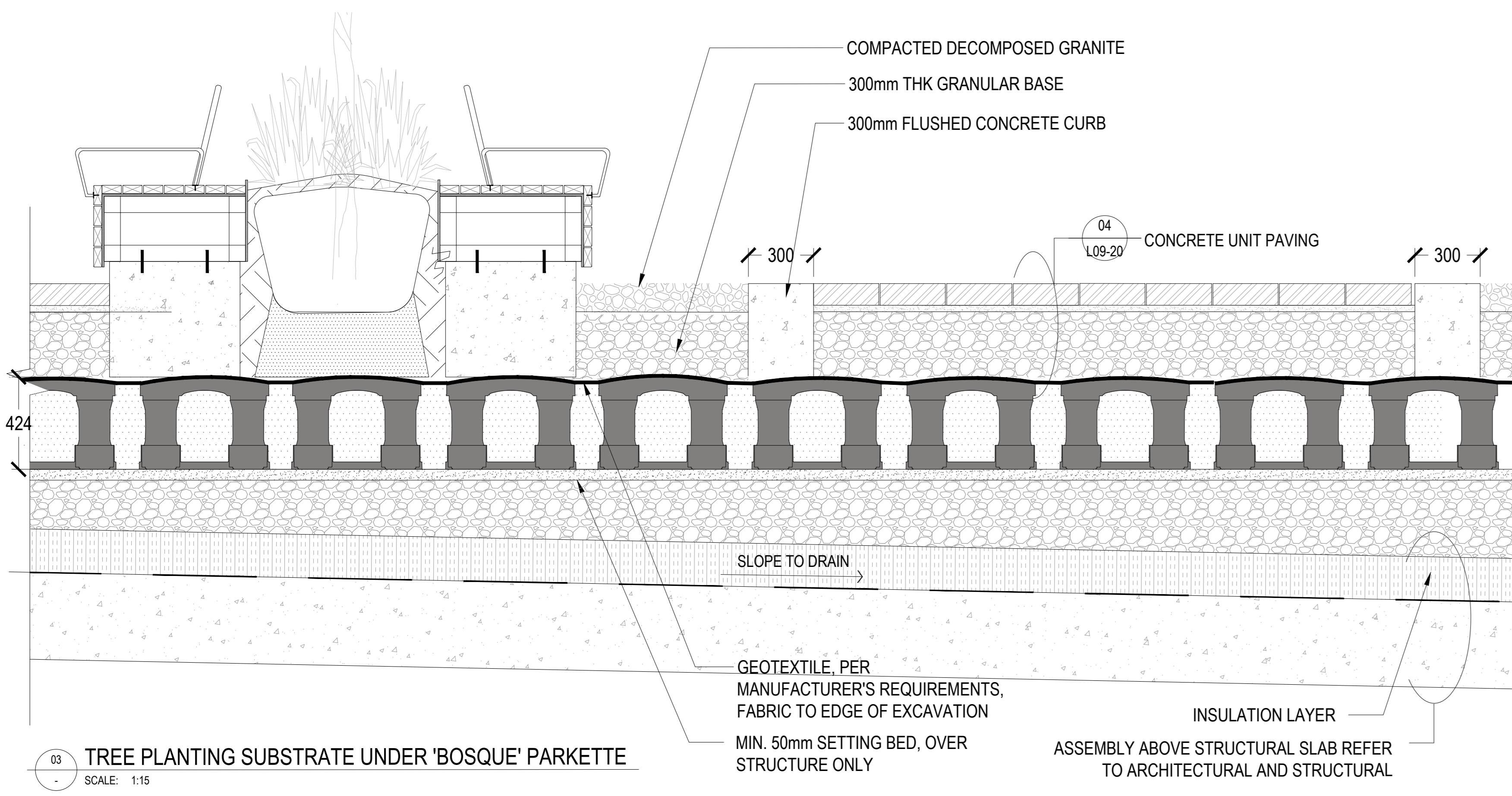
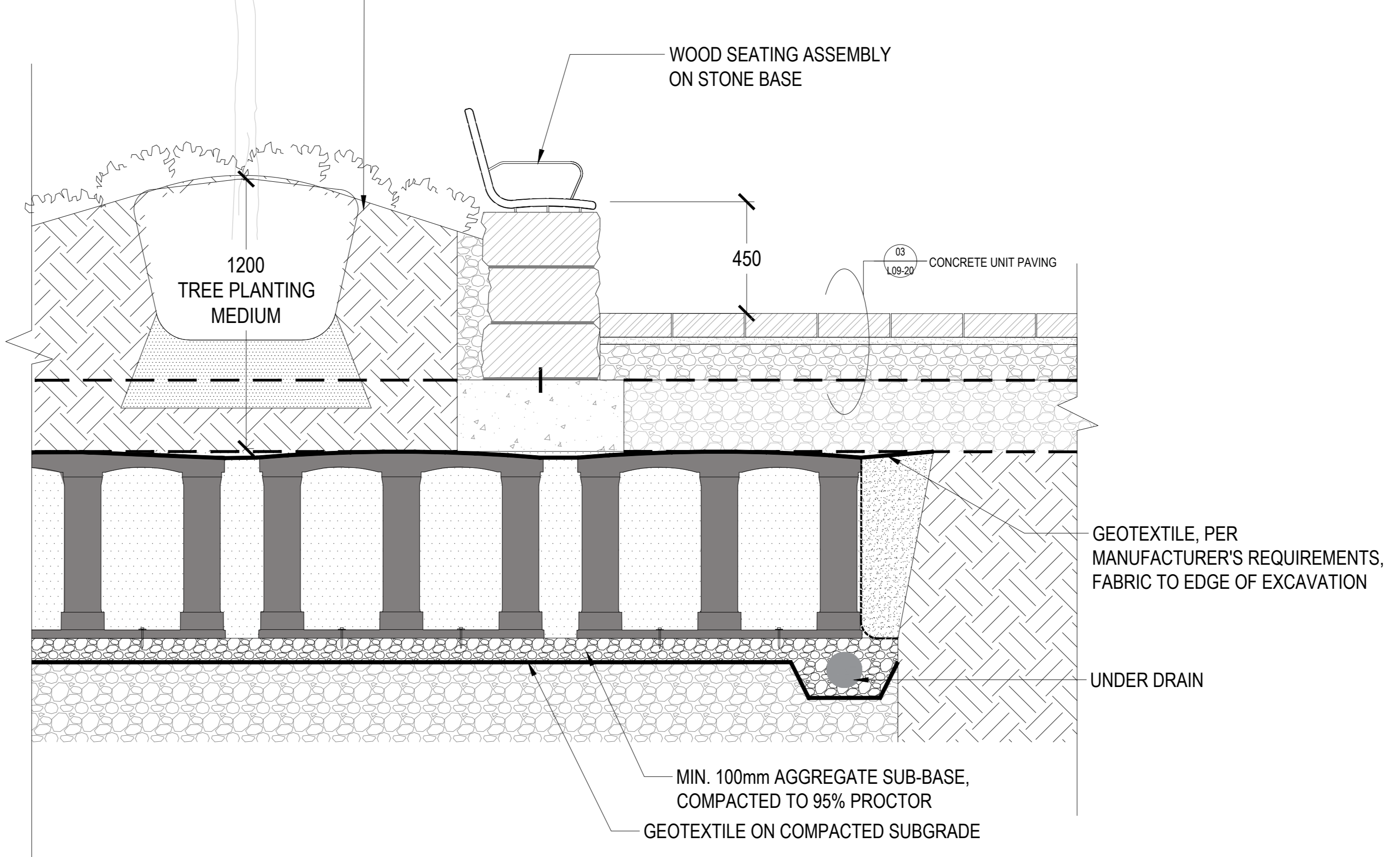


NOTE: TREE PLANTING SUBSTRATE WILL BE COMPRISED OF A MIXTURE OF SOIL CELLS, GROWING MEDIUM, AND STRUCTURAL SOILS SUFFICIENT TO PROVIDE REQUIRED SOIL VOLUMES FOR HEALTHY TREE ROOT NETWORKS.

DELETED

01 TREE PLANTING SUBSTRATE AT STREET TREE PLANTING
SCALE: 1:15

02 TREE PLANTING SUBSTRATE UNDER WEDGE PLANTERS
SCALE: 1:15



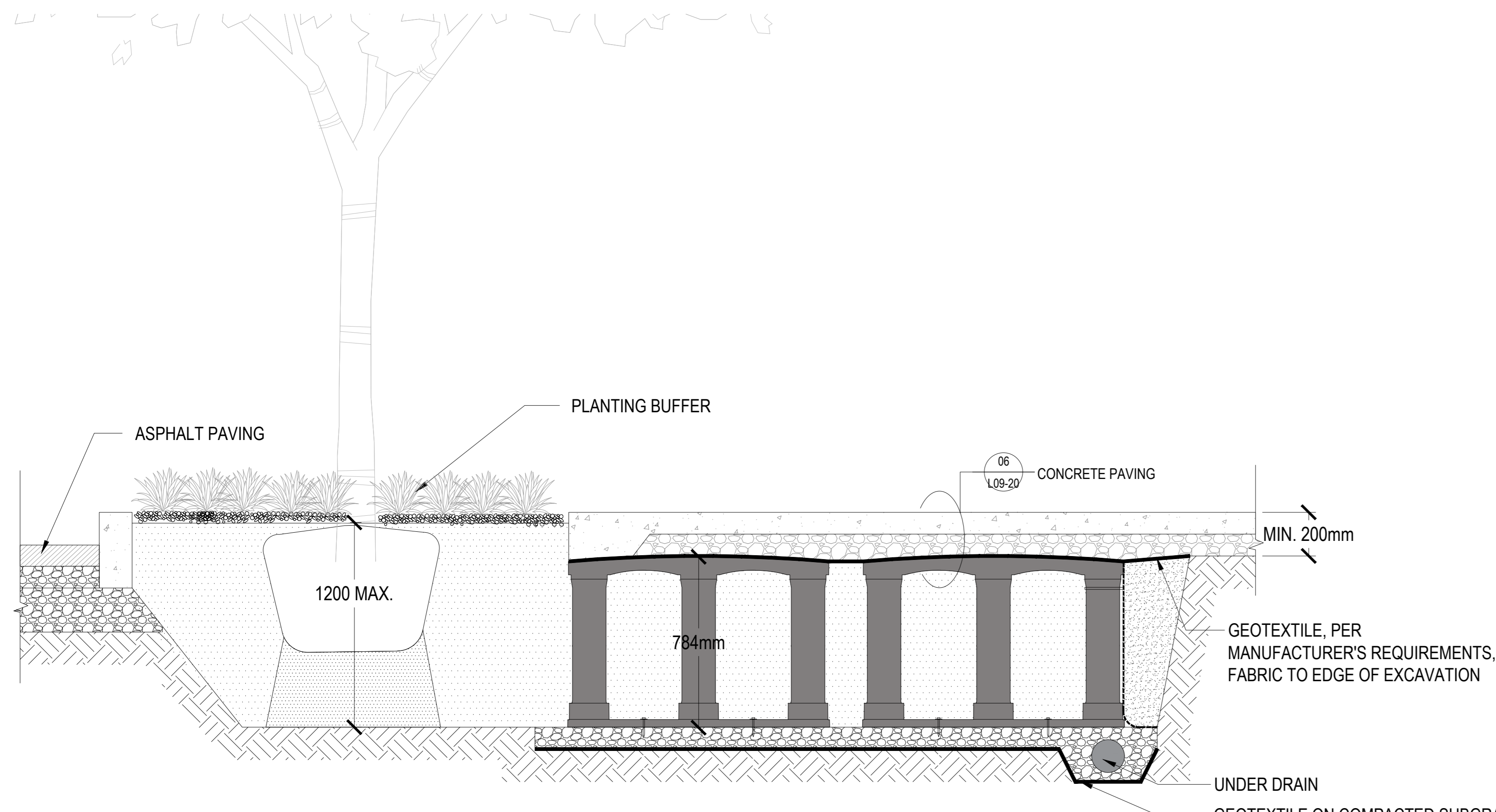
03 TREE PLANTING SUBSTRATE UNDER 'BOSQUE' PARKETTE
SCALE: 1:15

06 CITY GUIDELINE FOR ROOT BARRIER
SCALE: 1:30

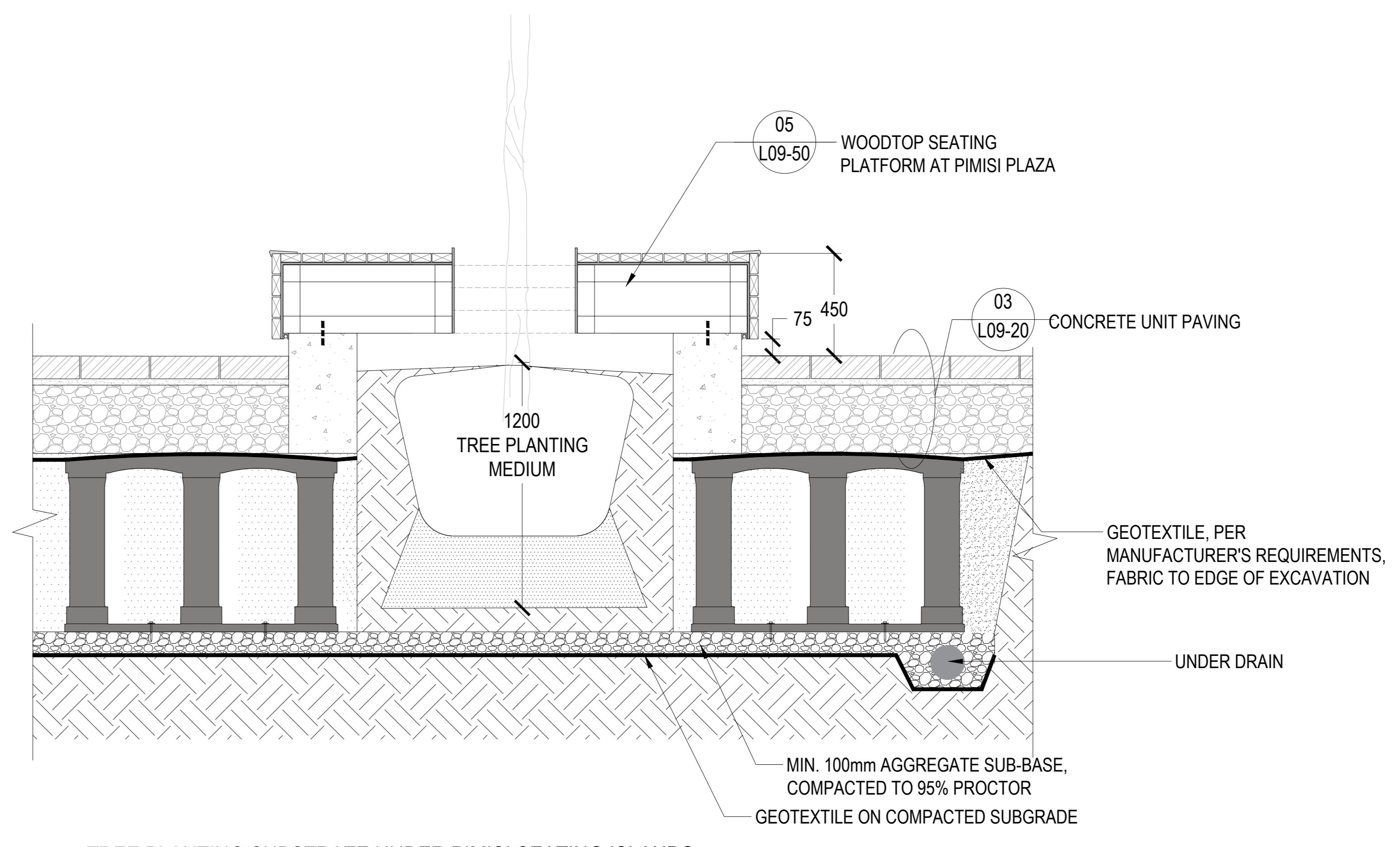
Andrew McCreight
ANDREW MCCREIGHT
MANAGER (A), DEVELOPMENT REVIEW CENTRAL
PLANNING, REAL ESTATE & ECONOMIC DEVELOPMENT
DEPARTMENT, CITY OF OTTAWA

APPROVED
By Andrew McCreight at 2:08 pm, Dec 14, 2023

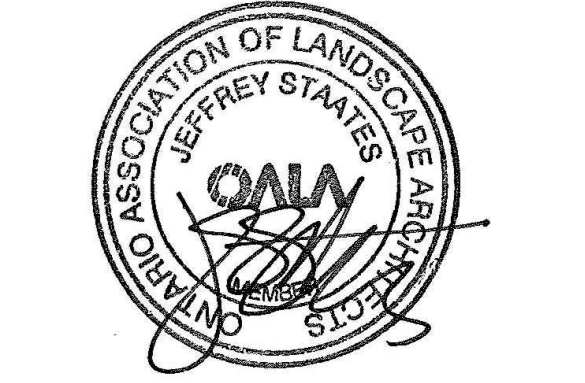
DELETED



04 TREE PLANTING SUBSTRATE UNDER CONCRETE MUP
SCALE: 1:15



05 TREE PLANTING SUBSTRATE UNDER PIMISI SEATING ISLANDS
SCALE: 1:15



PROJECT

LEBRETON LIBRARY PARCEL
665 Albert St
Ottawa, ON
Canada

dream

DREAM
30 Adelaide St. E., Suite 301,
Toronto, ON M5C 3H1
KEYPLAN

ISSUED FOR SITE PLAN CONTROL - NOT FOR CONSTRUCTION 2023-03-24

ISSUE CHART

NO.	REVISION	DATE
1	ISSUED FOR SITE PLAN CONTROL	2023-03-24
2	REVISION FOR BAA REVIEW	2023-04-01
3	REVISION FOR CPA REVIEW	2023-11-28
4	REVISION FOR CPA REVIEW	2023-12-14

Job Number

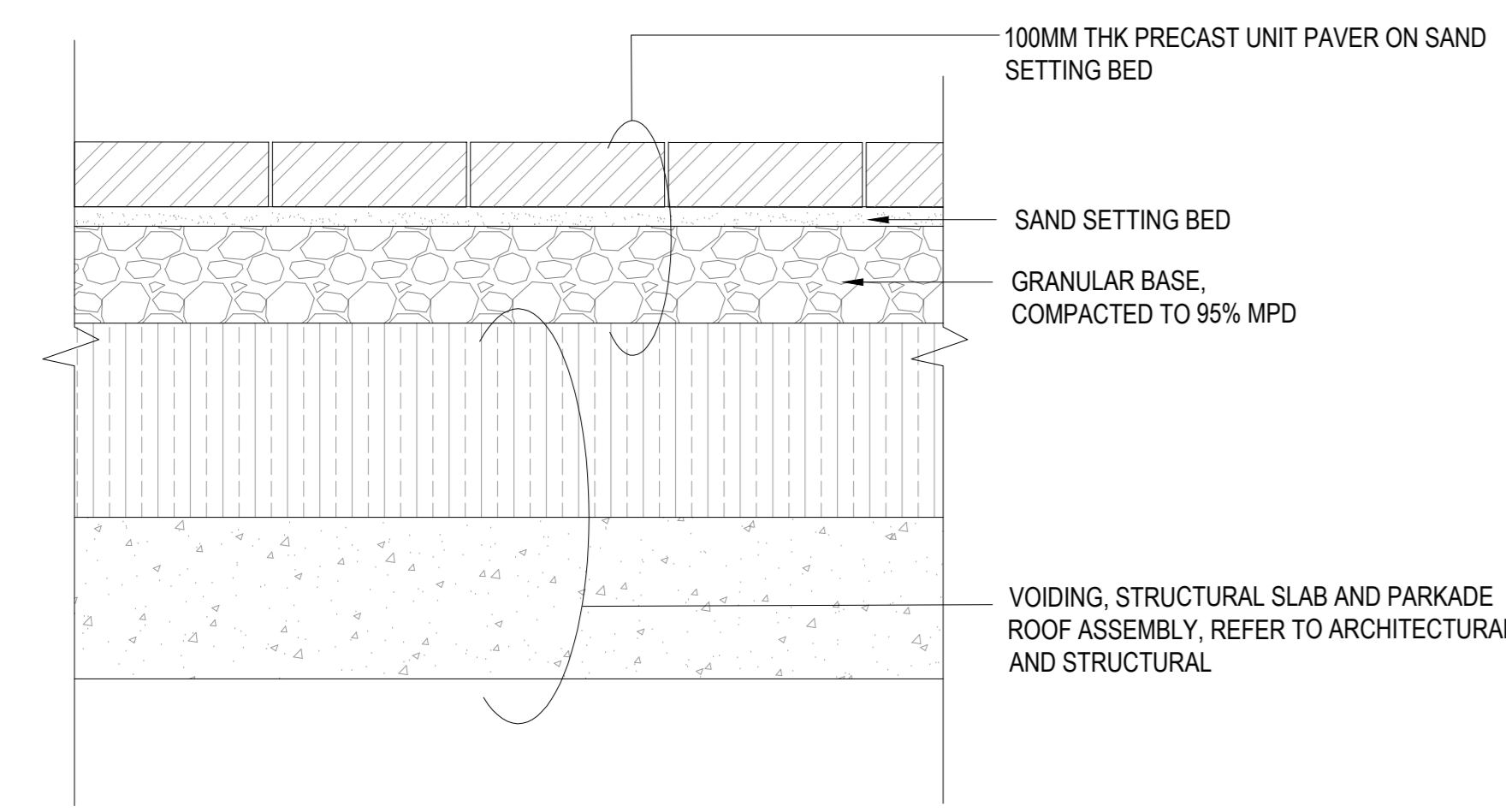
TITLE
LANDSCAPE DETAILS
TREE PLANTING
SUBSTRATE

SHEET NUMBER

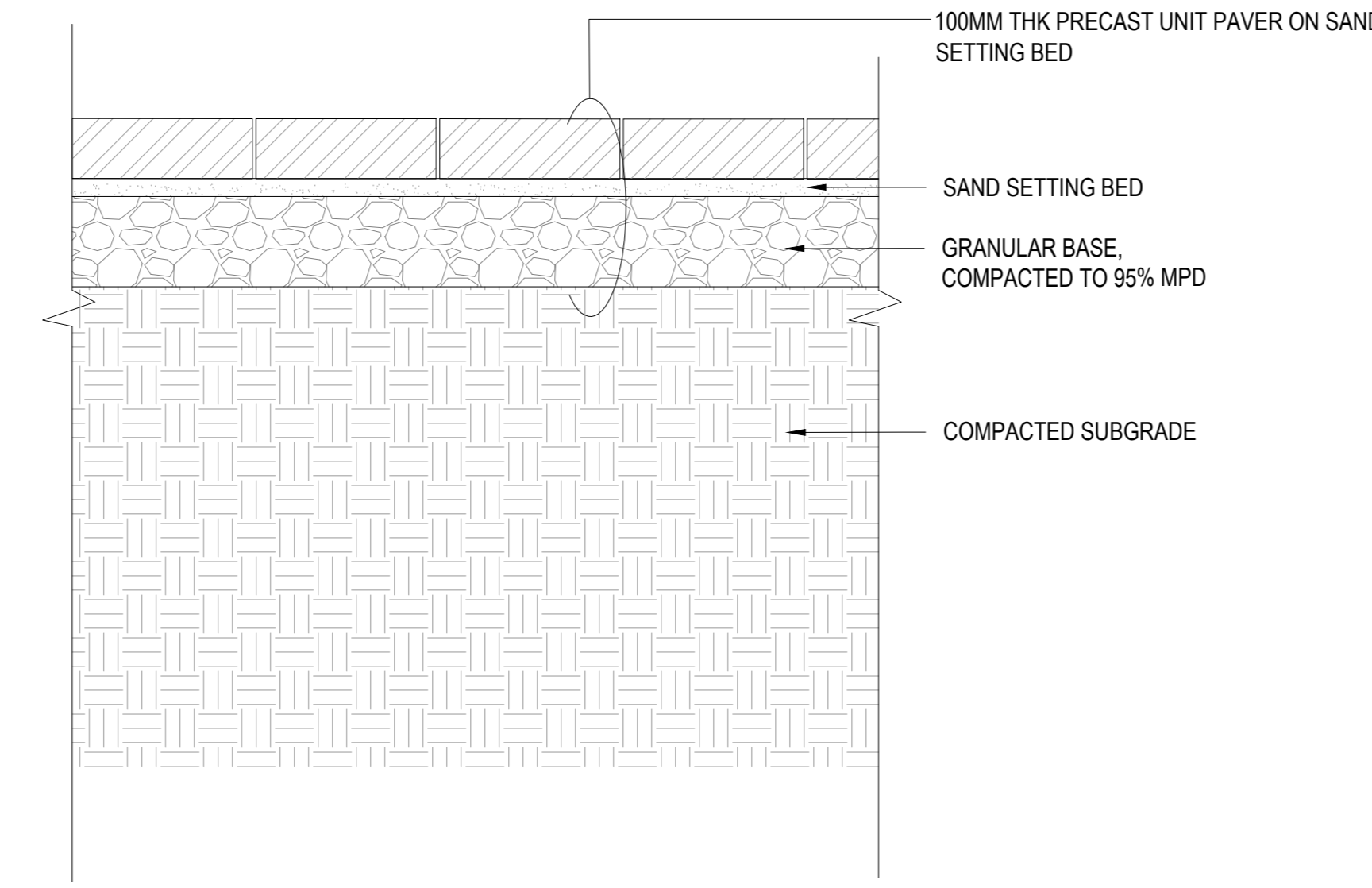
L09-12

CONSULTANTS

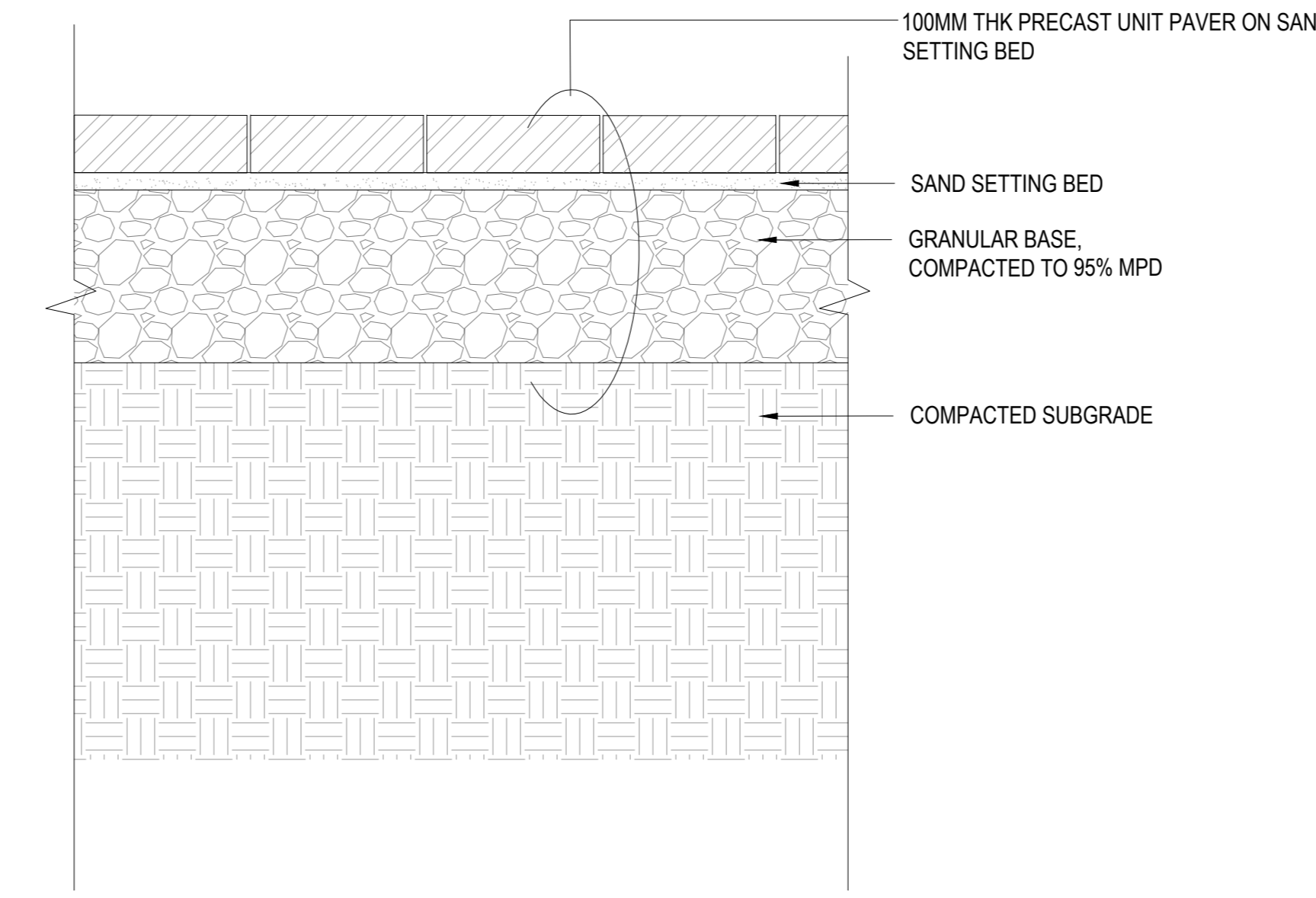
civil:
TMIG
8800 Dufferin St., Suite 200, Vaughan, ON L4R 0C5
structural:
RJC Engineers
1545 Carlin Ave., Suite 304, Ottawa, ON K1Z 8P9
sep
Smith+Andersen
1600 Carling Ave., Suite 530, Ottawa, ON K1Z 1G3
landscape:
PFS Studio
1777 W 3rd Ave., Vancouver, BC V6J 1KJ
consultant:
Two Row Architect
1804 6th Line, Oshawa, ON N6A 1M0
contractor:
Eli&Dan
2800 Queensview Dr., Ottawa, ON K2B 6J9



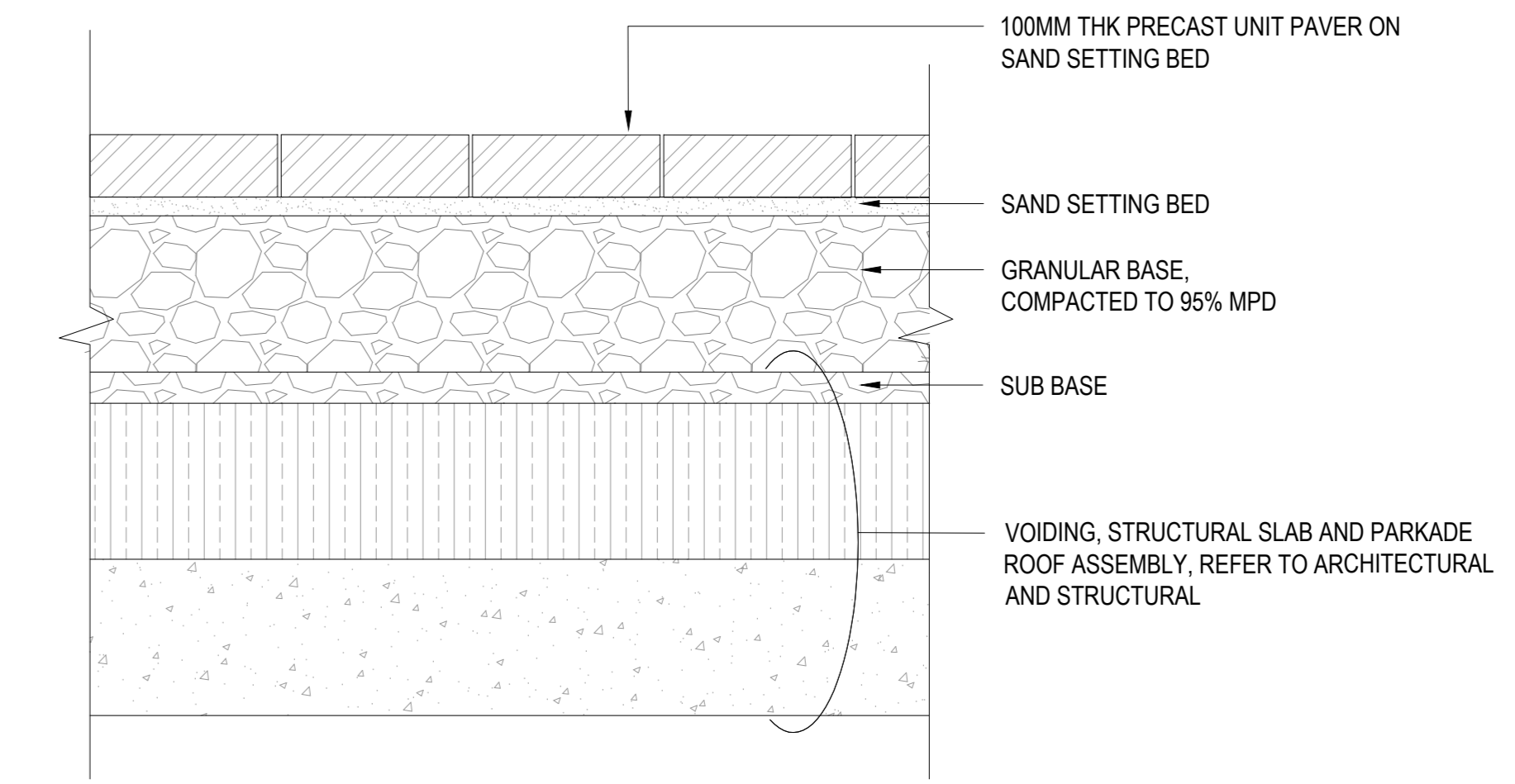
01 PEDESTRIAN PRECAST UNIT PAVING ON SLAB
SCALE: 1:10



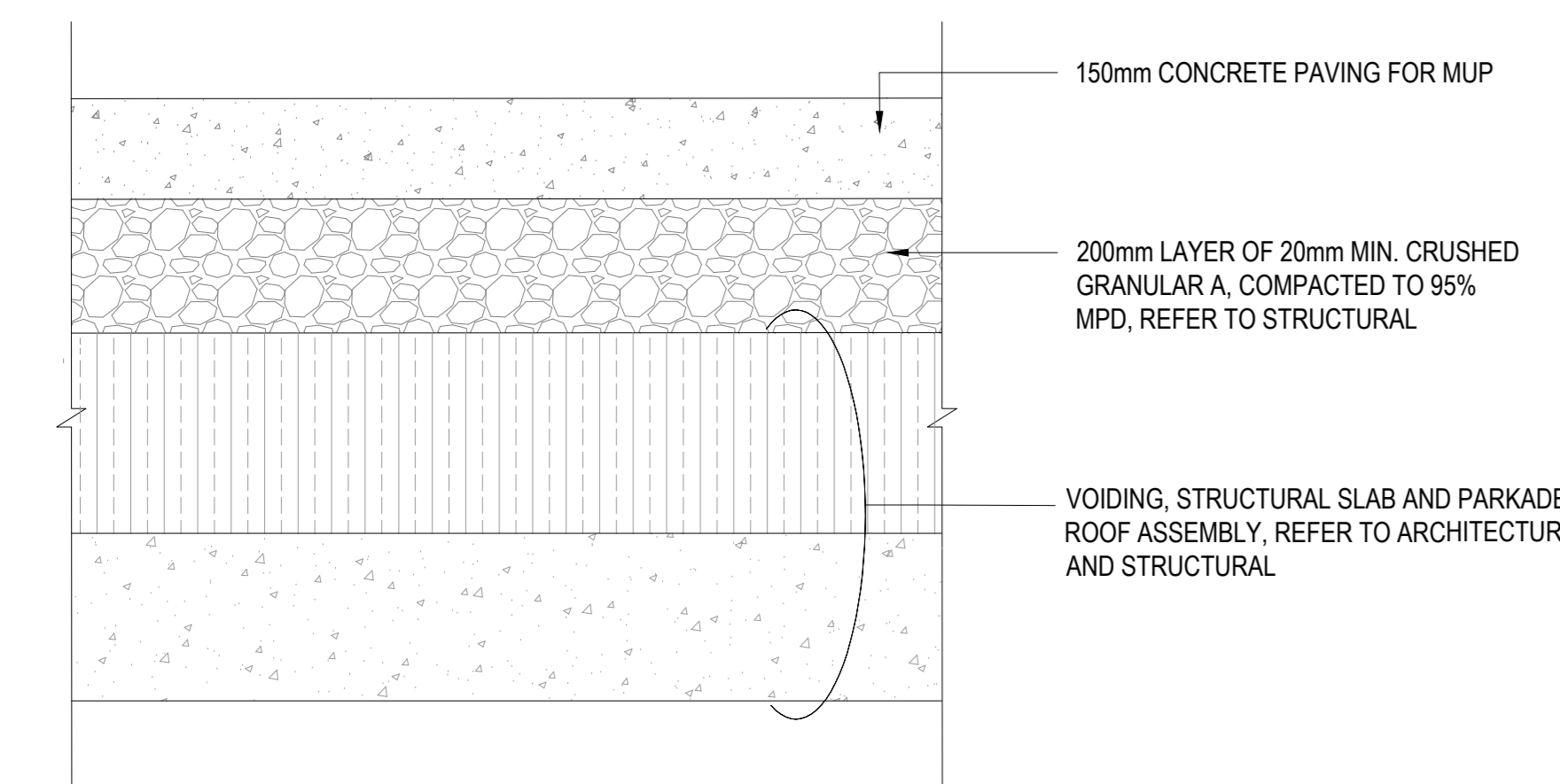
02 PEDESTRIAN PRECAST UNIT PAVING ON GRADE
SCALE: 1:10



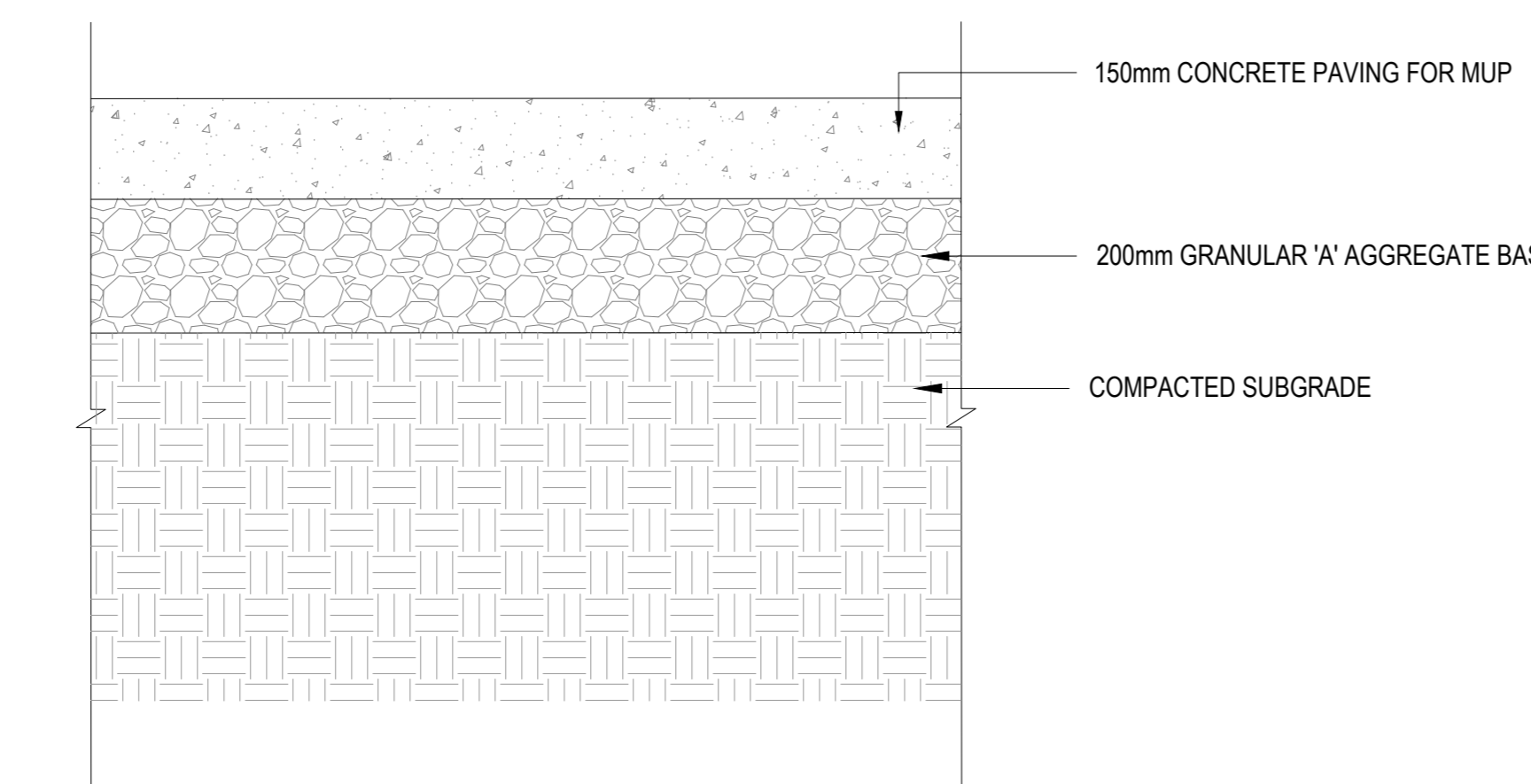
03 VEHICULAR PRECAST UNIT PAVING ON GRADE
SCALE: 1:10



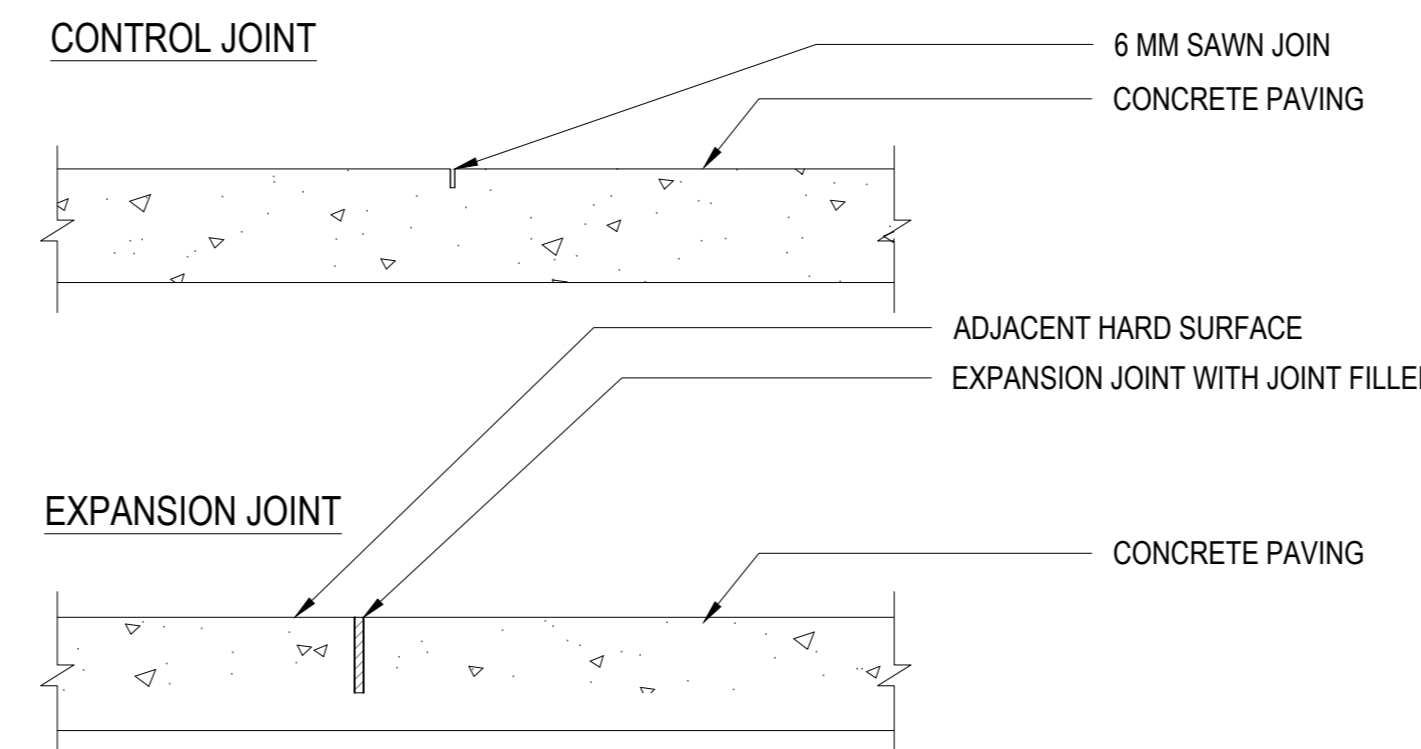
04 VEHICULAR CONCRETE UNIT PAVER ON SLAB
SCALE: 1:10



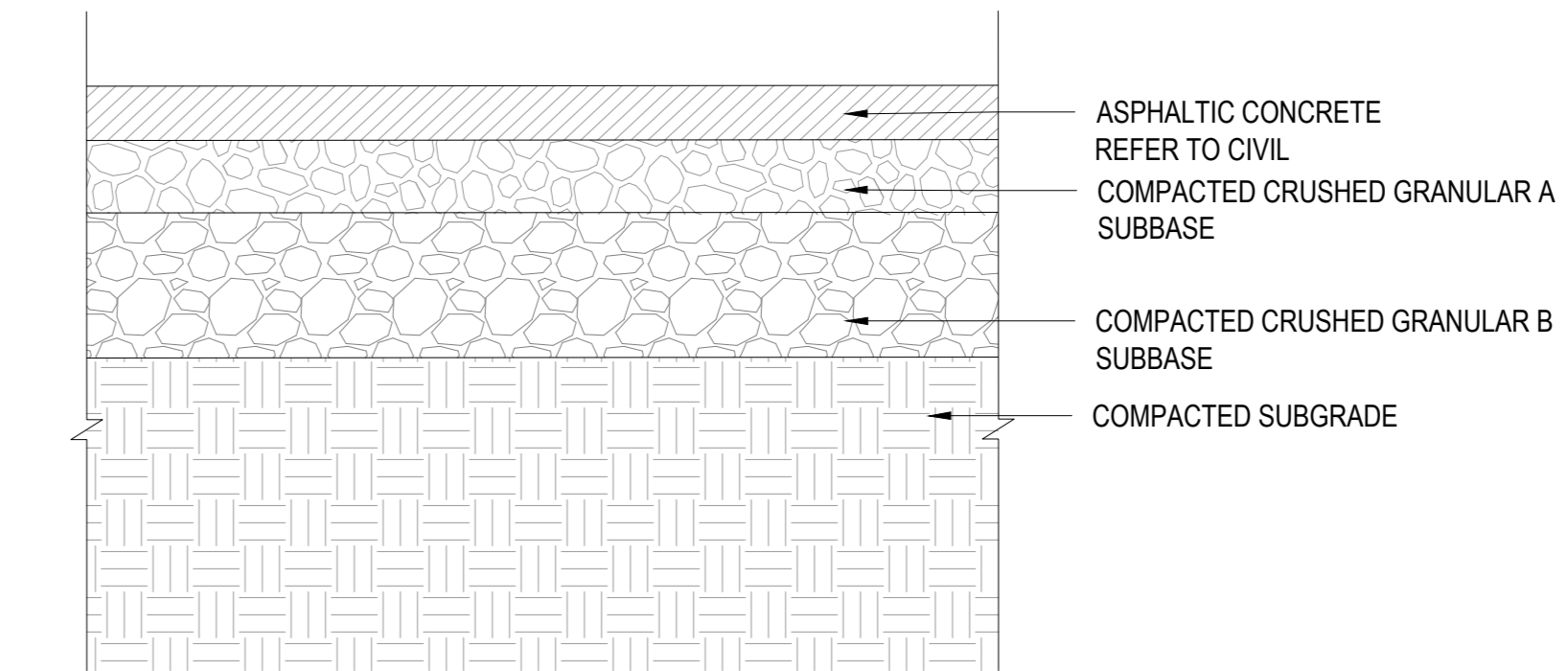
05 CONCRETE PAVING ON SLAB
SCALE: 1:10



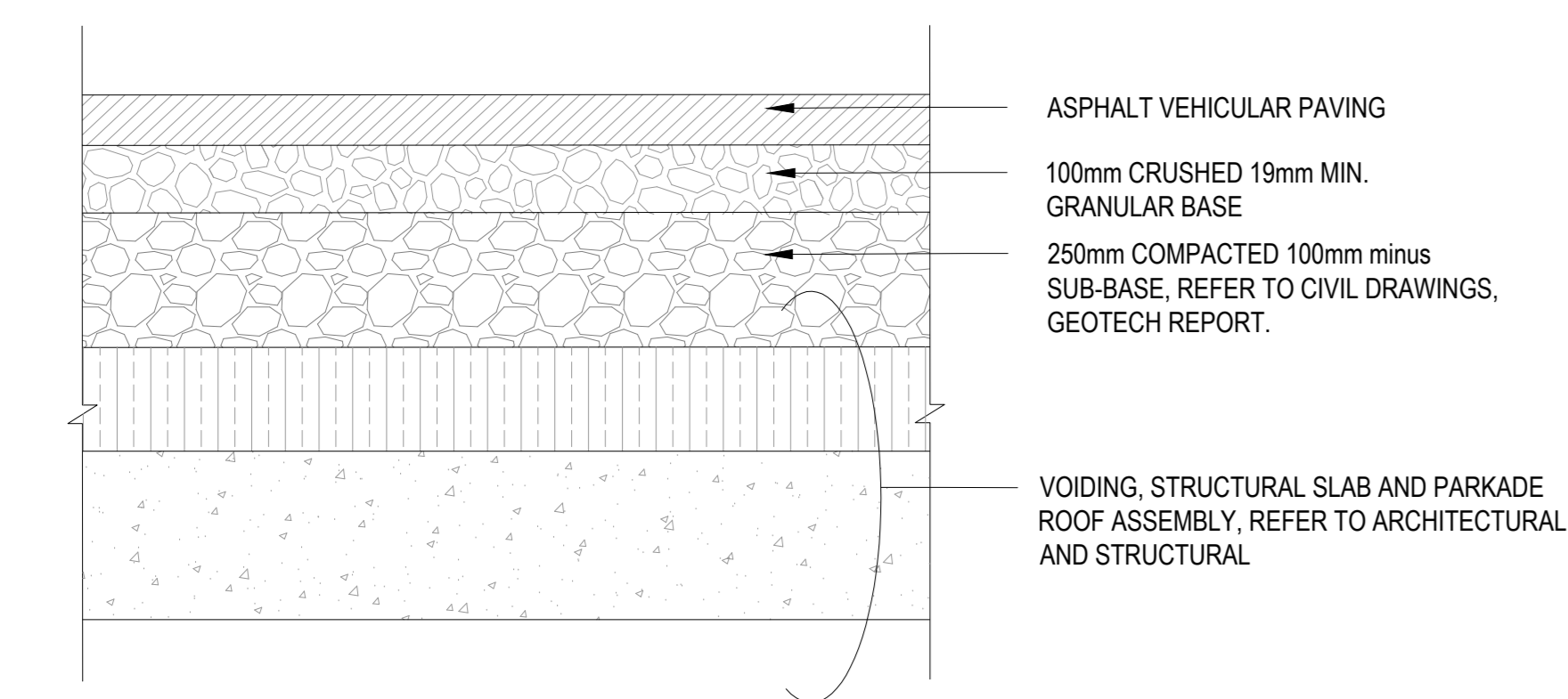
06 CONCRETE PAVING ON GRADE
SCALE: 1:10



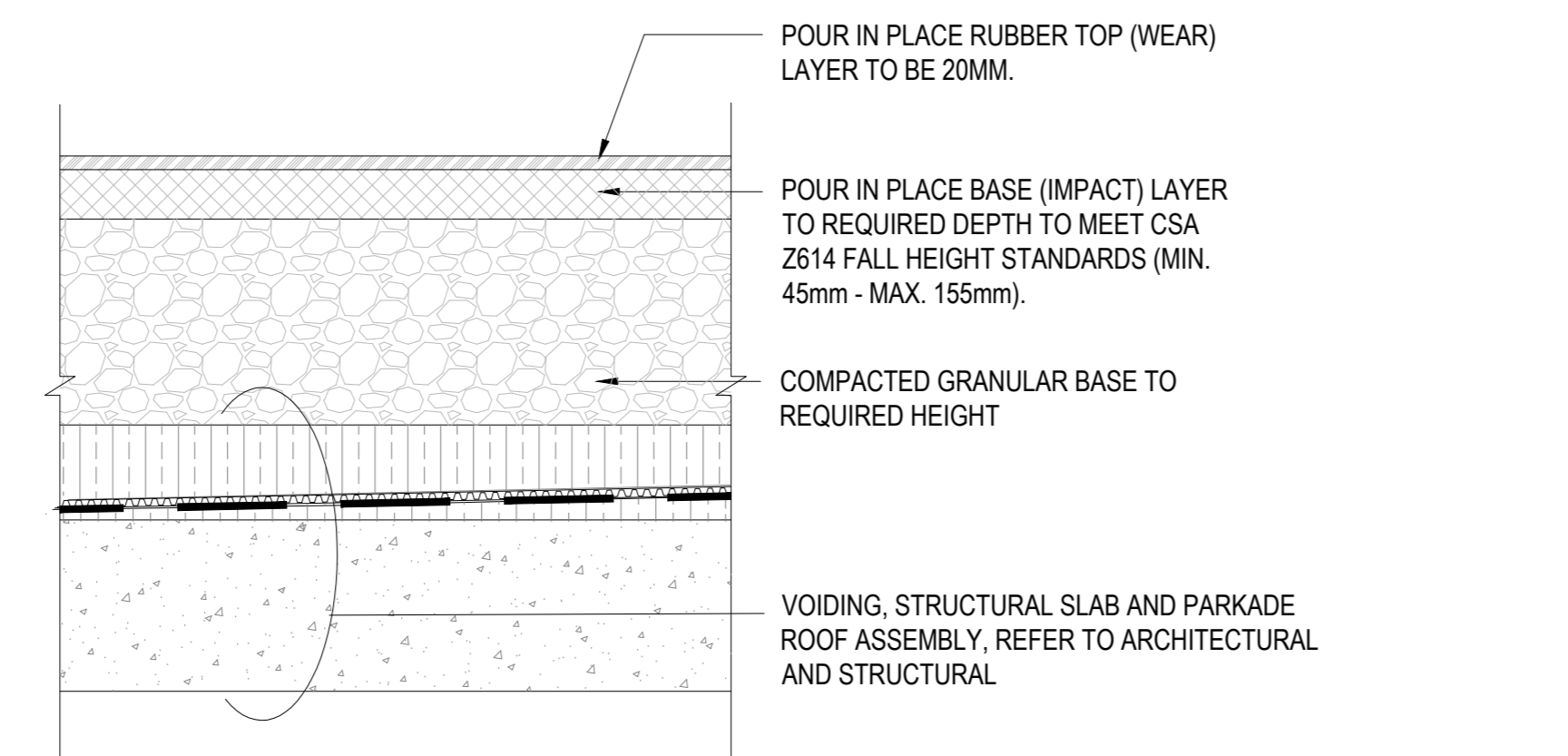
07 CONCRETE PAVING JOINTS
SCALE: 1:10



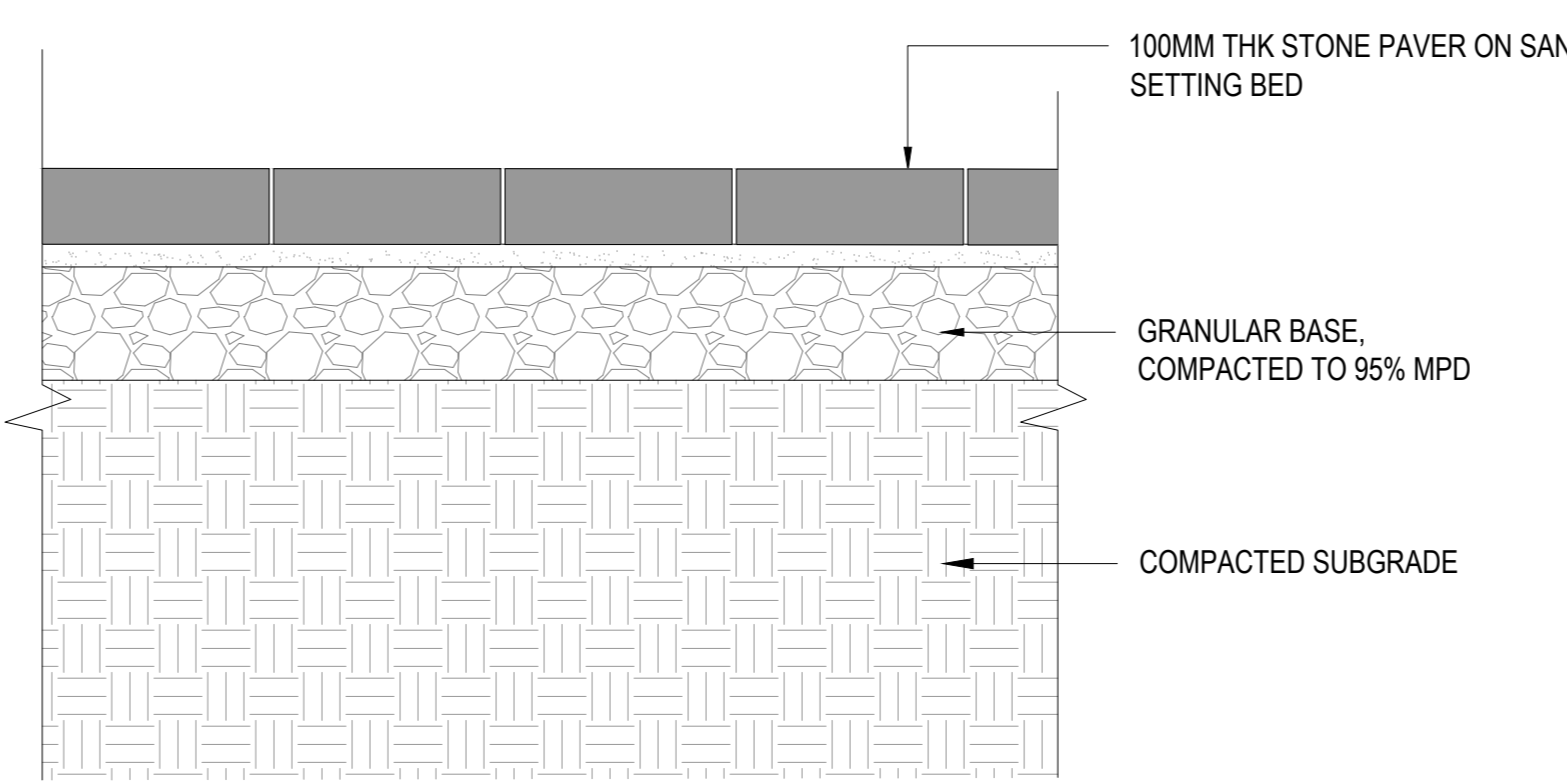
08 ASPHALT BIKE LANE
SCALE: 1:10



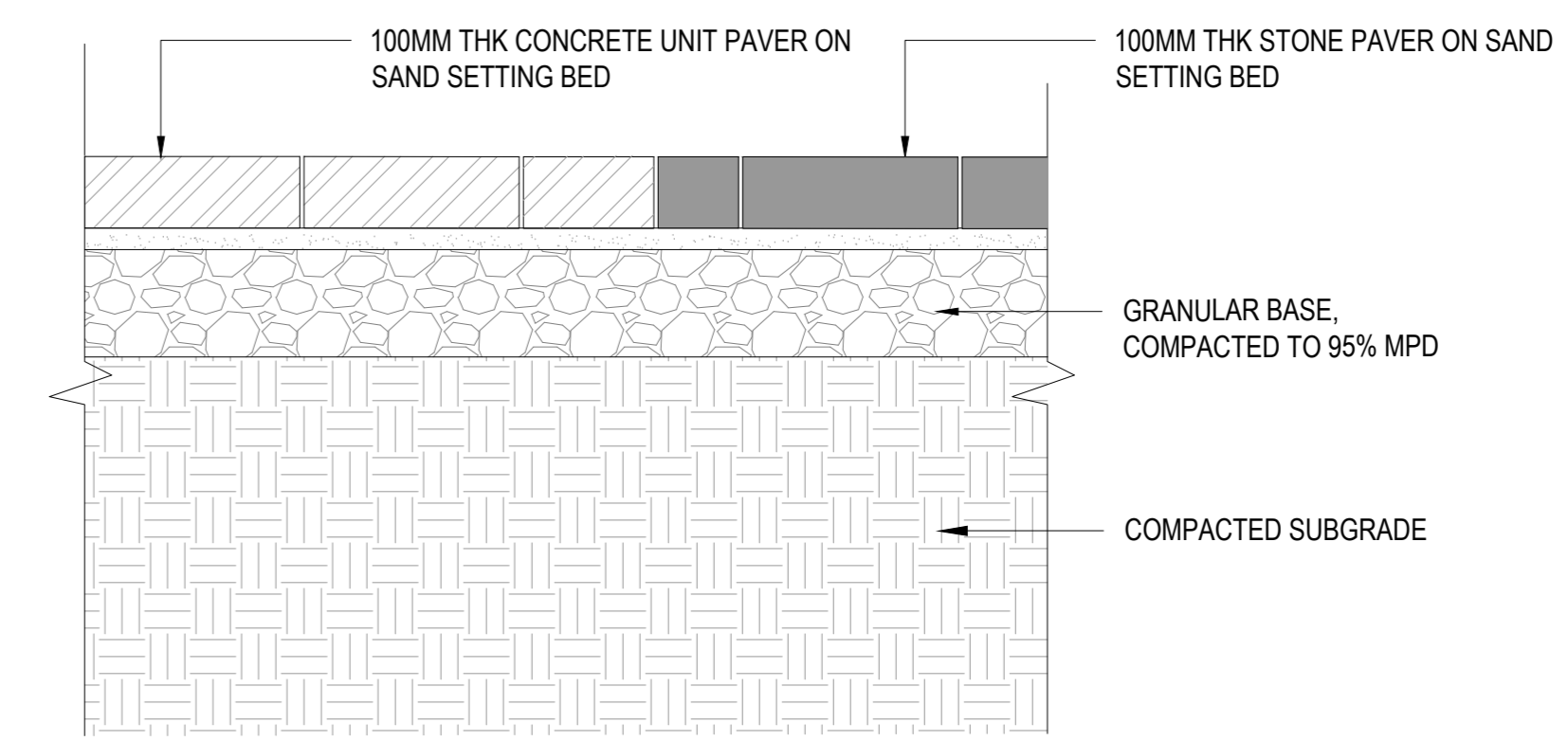
09 ASPHALT VEHICULAR PAVING ON SLAB
SCALE: 1:10



10 RESILIENT PLAY SURFACE AT 'BOSQUE'
SCALE: 1:10



11 STONE PAVER AT GATHERING CIRCLE
SCALE: 1:10



12 STONE AND CONCRETE UNIT PAVER JOINT
SCALE: 1:10



ISSUED FOR SITE PLAN CONTROL - NOT FOR CONSTRUCTION 2023-03-24

PROJECT

**LEBRETON LIBRARY
PARCEL**
665 Albert St
Ottawa, ON
Canada



DREAM
30 Adelaide St. E., Suite 301,
Toronto, ON M5C 3H1
KEYPLAN

ISSUE CHART

NO	REVISION	DATE
1	ISSUED FOR SITE PLAN CONTROL	2023-03-24
2	REVISION FOR BIDDING	2023-04-01
3	REVISION FOR FINAL SUBMISSION	2023-04-20
4	REVISION FOR FINAL APPROVAL	2023-04-20
DATE	ISSUE	DATE

Job Number

TITLE

**LANDSCAPE DETAILS
PAVING**

SHEET NUMBER

L09-20

Andrew McCreight
ANDREW MCCREIGHT
MANAGER (A), DEVELOPMENT REVIEW CENTRAL
PLANNING, REAL ESTATE & ECONOMIC DEVELOPMENT
DEPARTMENT, CITY OF OTTAWA

APPROVED
By Andrew McCreight at 2:08 pm, Dec 14, 2023

