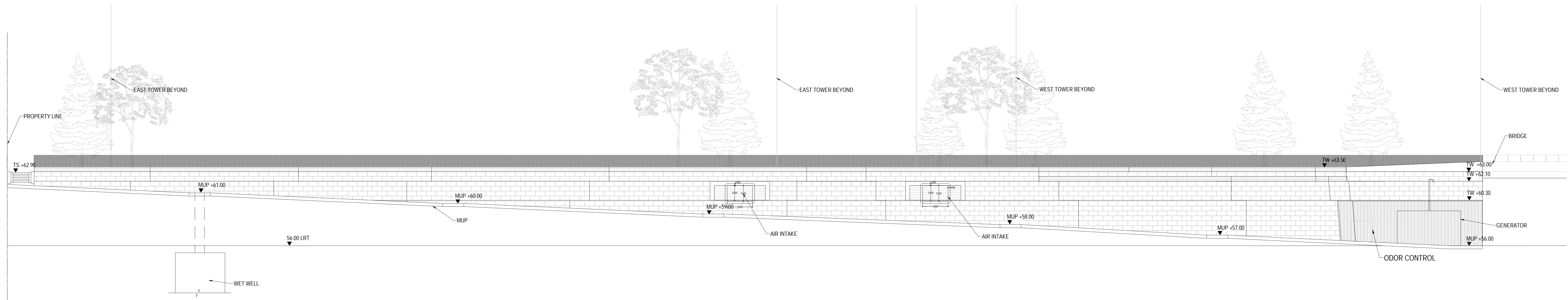
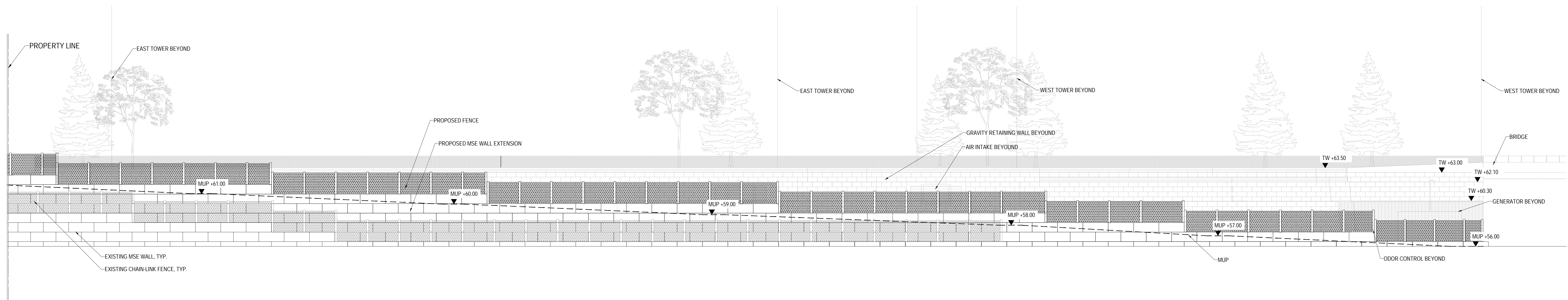


CONSULTANTS

- civil:  
TMIG  
8800 Dufferin St., Suite 200, Vaughan, ON L4R 0C5
- structural:  
RJC Engineers  
1545 Carlin Ave., Suite 304, Ottawa, ON K1Z 8P9
- MEP:  
Smith+Andersen  
1600 Carling Ave., Suite 530, Ottawa, ON K1Z 1G3
- landscape:  
PFS Studio  
1777 W 3rd Ave., Vancouver, BC V6J 1K1
- consultant:  
Two Row Architect  
1804 6th Line, Oshawa, ON N6A 1M0
- contractor:  
Eli-Dan  
2480 Queensview Dr., Ottawa, ON K2B 8J9



01 NORTH RETAINING WALL ELEVATION  
SCALE: 1:150



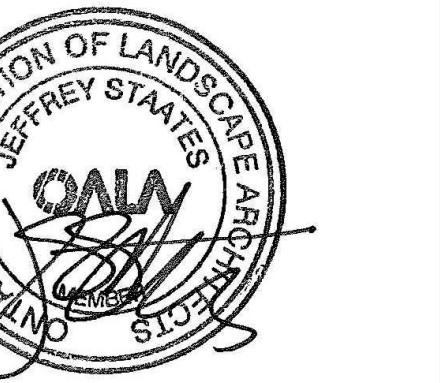
02 MSE RETAINING WALL ELEVATION  
SCALE: 1:150

*Andrew McCreight*

**ANDREW MCCREIGHT**  
MANAGER (A), DEVELOPMENT REVIEW CENTRAL  
PLANNING, REAL ESTATE & ECONOMIC DEVELOPMENT  
DEPARTMENT, CITY OF OTTAWA

**APPROVED**  
By Andrew McCreight at 2:08 pm, Dec 14, 2023

ISSUED FOR SITE PLAN CONTROL - NOT FOR CONSTRUCTION 2023-03-24



PROJECT

LEBRETON LIBRARY  
PARCEL  
665 Albert St  
Ottawa, ON  
Canada



DREAM  
30 Adelaide St. E., Suite 301,  
Toronto, ON M5C 3H1  
KEYPLAN

ISSUE CHART

NO.	DESCRIPTION	DATE
1	ISSUED FOR SITE PLAN CONTROL	2023-03-24
2	REVISION FOR PUBLIC COMMENT	2023-04-15
3	REVISION FOR PUBLIC COMMENT	2023-05-10
4	REVISION FOR PUBLIC COMMENT	2023-06-01
5	ISSUED FOR CONSTRUCTION	2023-06-15

Job Number

TITLE

ELEVATION  
NORTH RETAINING  
WALL

SHEET NUMBER

**L08-14**