

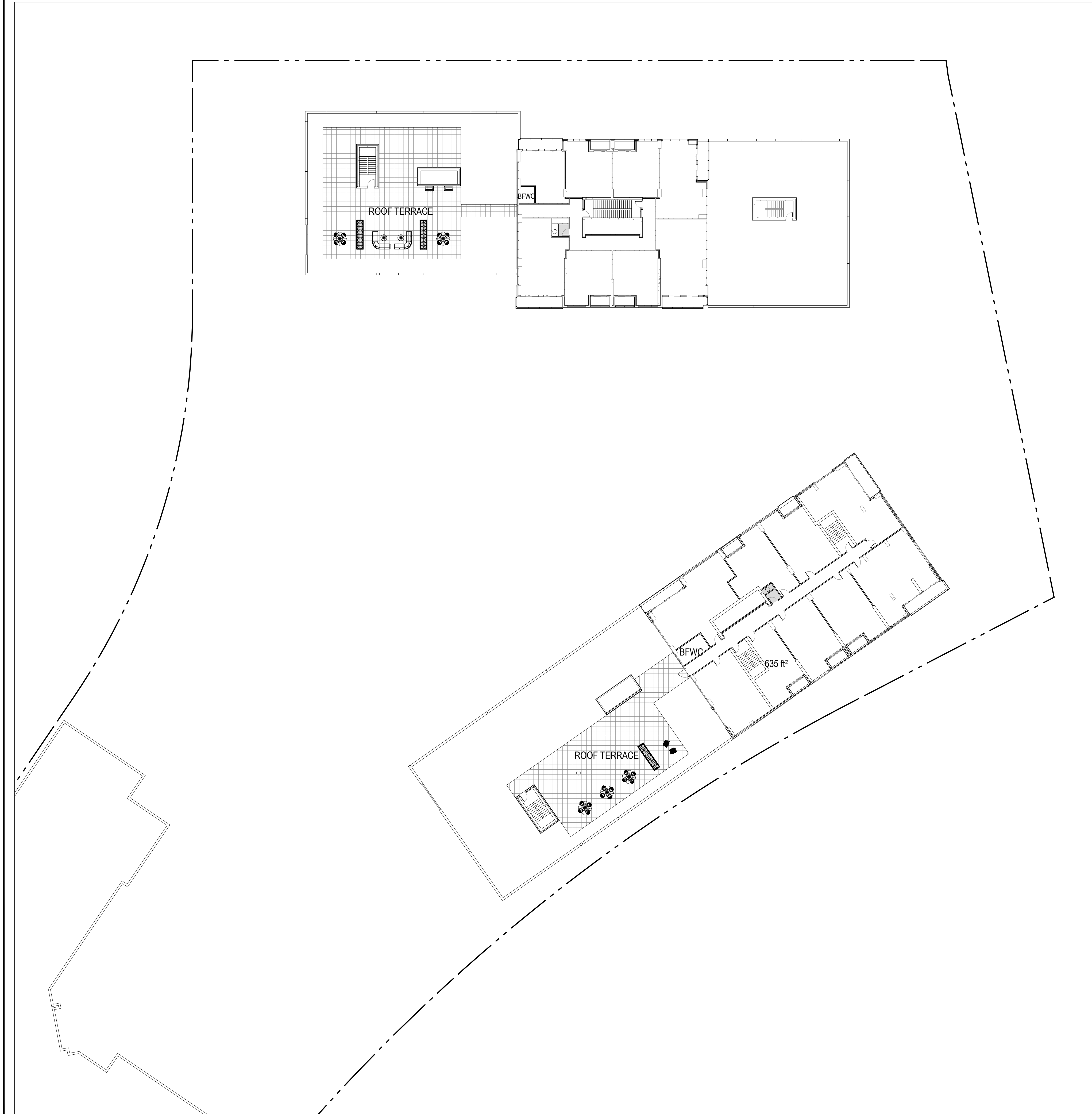
GENERAL NOTES:

1. It is the responsibility of the appropriate contractor or official to report any errors, omissions or discrepancies on this plan with actual site conditions to the Landscape Architect before proceeding with construction.
2. The contractor is to notify all utility companies and authorities prior to any excavation and ascertain locations of underground services.
3. The contractor is to reinstatement all areas and items damaged as a result of construction activity.
4. The contractor is to comply with all pertinent codes and by-laws.
5. The contractor is to maintain a positive surface run-off throughout the entire construction period.
6. The Landscape Architect is not responsible for subsurface conditions.
7. The contractor is to identify all existing trees to remain on site with the Landscape Architect prior to construction.
8. The contractor is to stake the proposed location of all plant material in conjunction with the Landscape Architect prior to excavation.
 - 9. Minimum distances for selected deciduous trees are as follows:
 - Building Foundations 7.5m
 - Sidewalks 1.5m
 - Public Streets 2.5m
 - Underground Infrastructure 2.0m
 - 10. All trees within 1m of underground utility trenches are to be excavated by hand.
 - 11. Remove all protective wrapping from tree trunks after installation.
 - 12. Staking of trees shall only be performed if necessary.
 - 13. Ensure that mulch is pulled back a min. distance of 75mm from base of tree trunk.

2	DECIDUOUS TREE PLANTING
L.1	N.T.S.

3	SHRUB AND PERENNIAL PLANTING
L.1	N.T.S.

D07-12-21-0017



1 ROOF TERRACE PLAN - 8TH FLOOR
L.2 SCALE 1:300



APPROVED
By Allison Hamlin at 9:28 am, Dec 12, 2023

Allison Hamlin

ALLISON HAMLIN
MANAGER (A), DEVELOPMENT REVIEW WEST
PLANNING, REAL ESTATE & ECONOMIC DEVELOPMENT
DEPARTMENT, CITY OF OTTAWA

CLIENT:

CLARIDGE HOMES

CONSULTANTS

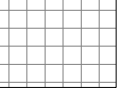
ARCHITECTS:

NEUF architect(e)s SENCRL
630, boul. René-Lévesque O. 32e étages, Montréal QC H3B 1S6
T 514 847 1117 NEUFarchitectes.com

CIVIL ENGINEERS:

NOVATECH
Suite 200, 240 Michael Cowpland Drive
Ottawa, Ontario, Canada K2M 1P6

LEGEND

 PROPOSED PRECAST CONCRETE PAVERS

No.	Issue	Date	DR	CK
1	ISSUED FOR SITE PLAN APPROVAL	05/03/2023	LC	JL

JAMES B. LENNOX & ASSOCIATES INC.
LANDSCAPE ARCHITECTS
3332 CARLING AVE. OTTAWA, ONTARIO K2H 5A8
Tel. (613) 722-5168 Fax. (1866) 343-3942

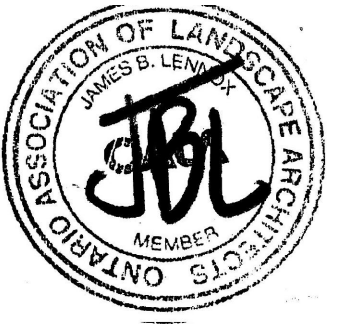
PROJECT

KANATA RENTAL
1200 Maritime Way, Ottawa

DRAWING

ROOF TERRACE PLAN - 8TH FLOOR

STAMP



SCALE

AS SHOWN

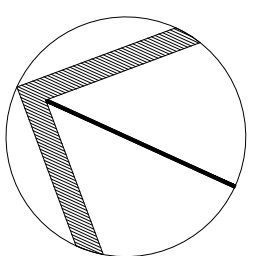
START DATE

DECEMBER, 2020

PROJECT NO.

20-CLG-2066

PROJECT NORTH



DRAWING NO.

L.2

PLOT SIZE ARCH-D