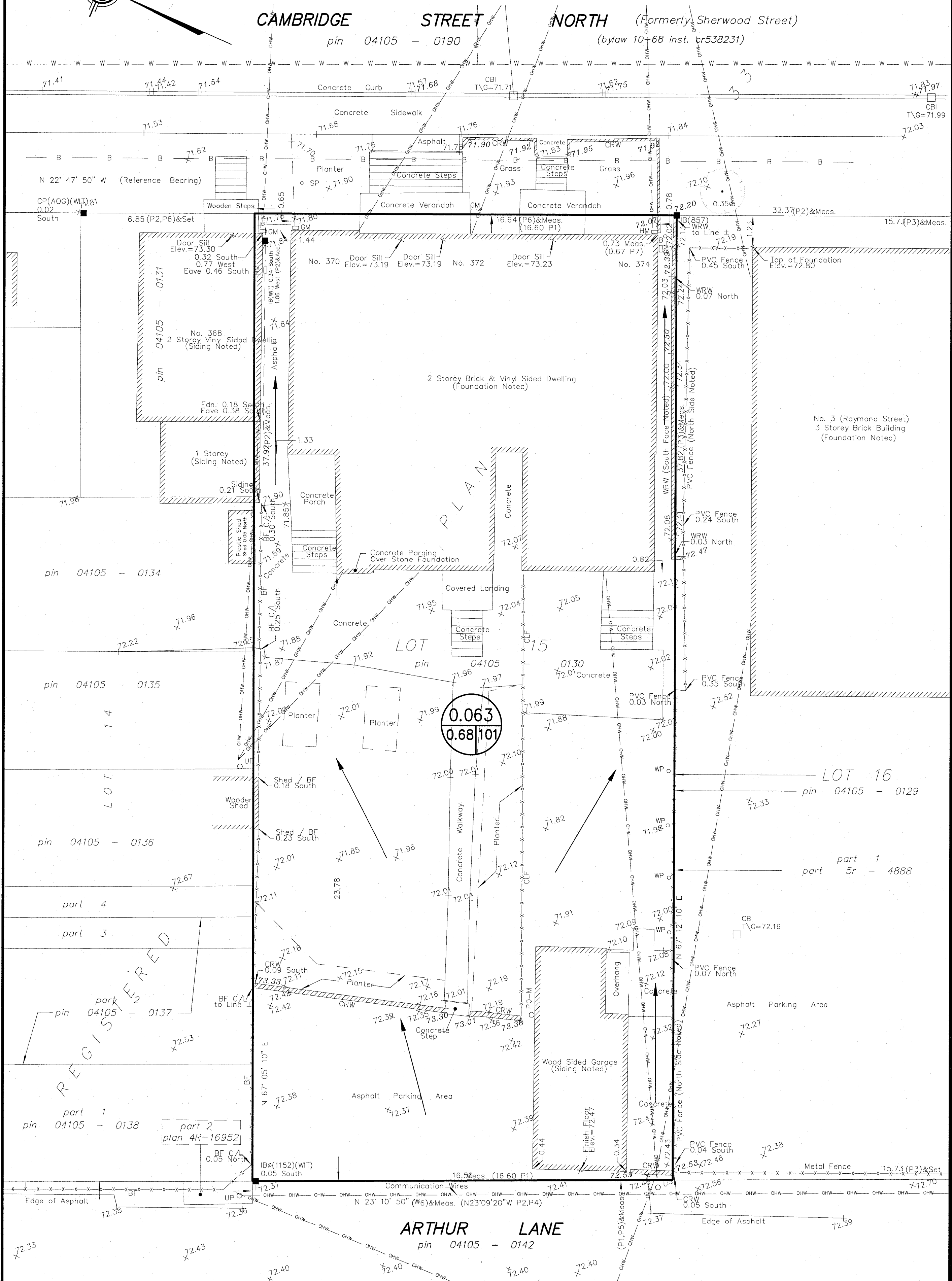
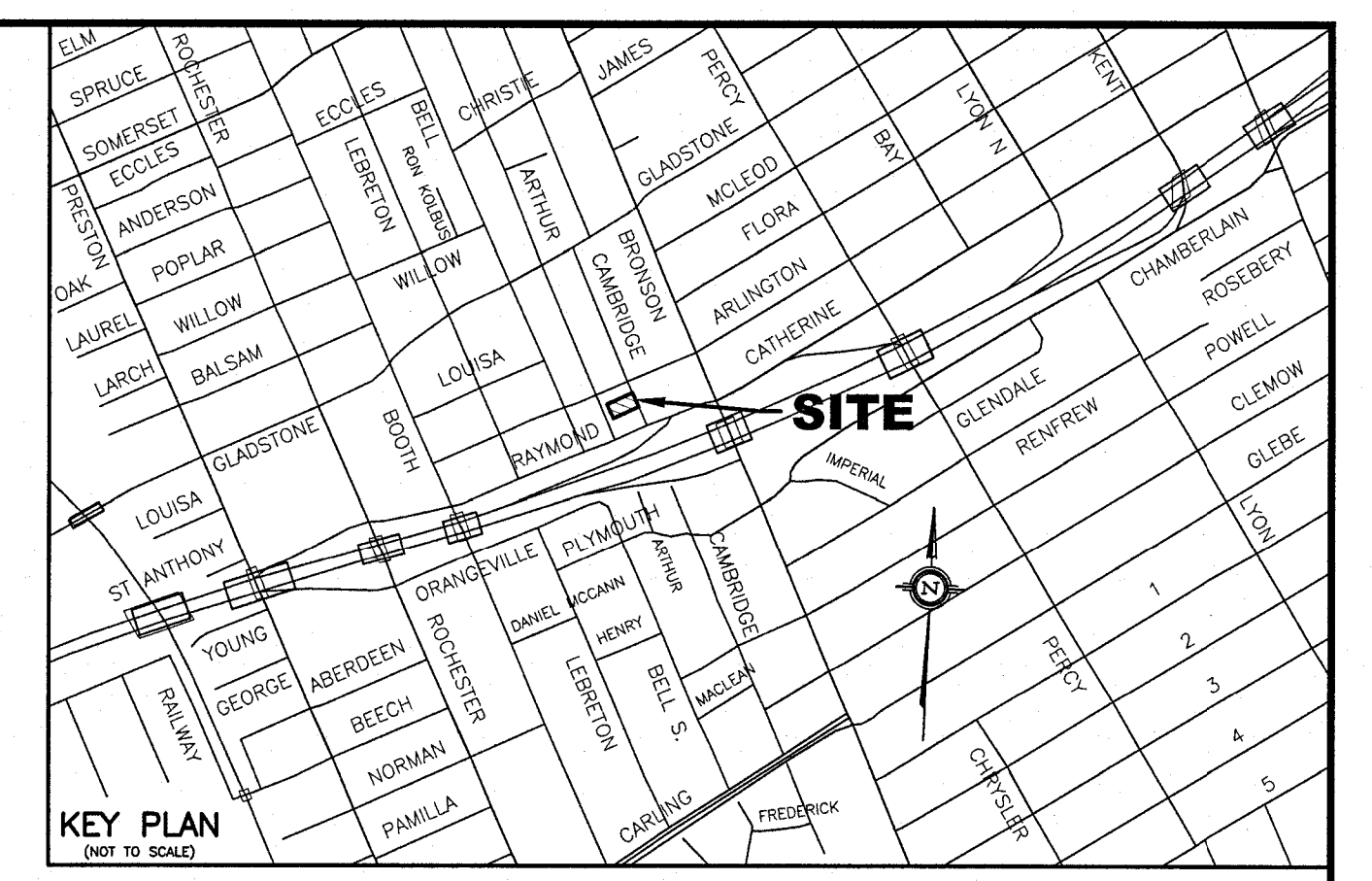
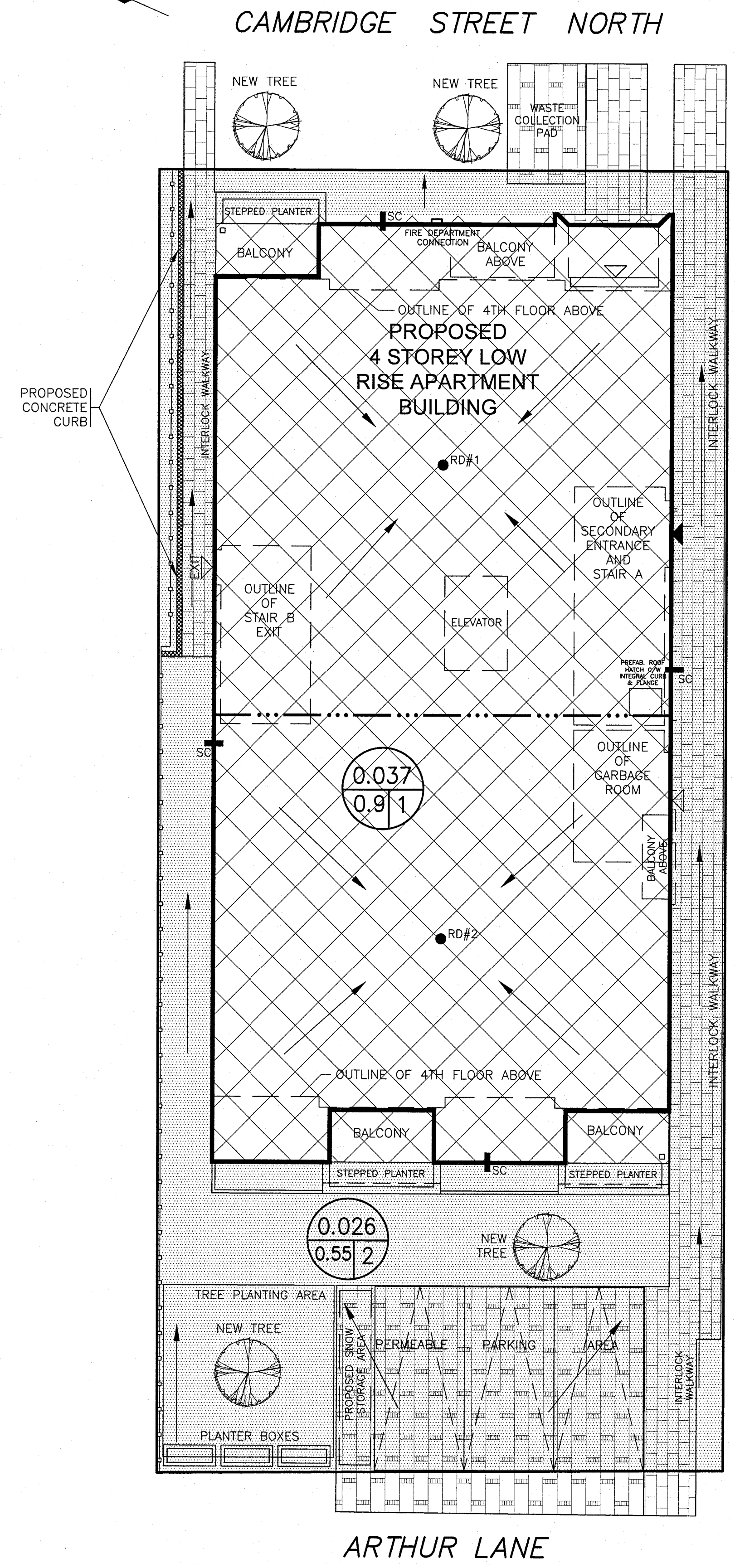


**PRE - DEVELOPMENT STORM DRAINAGE AREA**



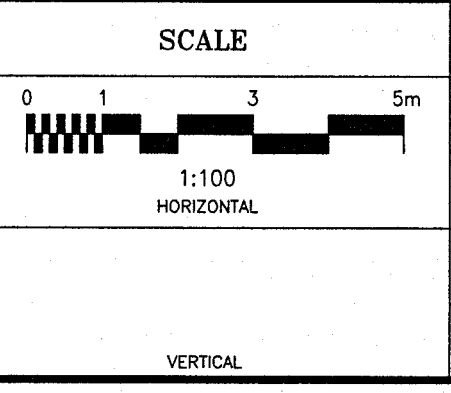
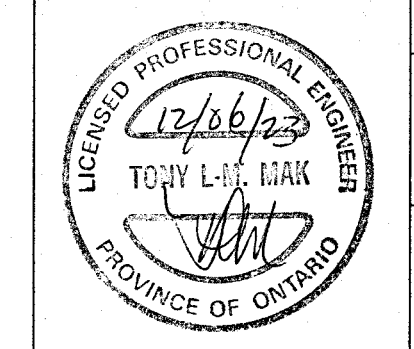
**POST DEVELOPMENT STORM DRAINAGE AREA**



- LEGEND**
- RD#1 PROPOSED ROOF DRAIN NUMBER AND LOCATION
  - SC PROPOSED ROOF SCUPPER LOCATION
  - ▬ PROPOSED CONCRETE BARRIER CURB LOCATION
  - PROPOSED HIGH RIDGE LINE
  - 0.002 / 0.9 / 2 DRAINAGE AREA IN HECTARES
  - 0.9 / 2 DRAINAGE NODE NUMBER
  - COEFFICIENT OF RUNOFF
  - ▨ UN-CONTROLLED DRAINAGE AREA
  - ▩ CONTROLLED DRAINAGE AREA

- NOTES**
- NODE #1 REPRESENTS BUILDING ROOF AREA (SWM CONTROLLED AREA)
  - NODE #2 REPRESENTS UNCONTROLLED DRAINAGE AREA
  - NODE #101 REPRESENTS PRE-DEVELOPMENT DATA.

NO.	REVISION	DATE	BY
3	REVISIONS AS PER HOUSE DESIGNER'S LATEST REVISED SITE PLAN PROVIDED ON NOVEMBER 28, 2022 AND PER CITY'S REVIEW COMMENTS OF NOVEMBER 27, 2022	12/01/23	T.L.M.
2	REVISIONS TO REFLECT CITY OF OTTAWA HOUSE OF COMMONS AND PLAN NUMBER AS PER CITY'S REQUEST OF JUNE 23, 2023 AND PER HOUSE DESIGNER'S REVISED SITE PLAN OF AUGUST 28, 2023	09/28/23	T.L.M.
1	REVISIONS AS PER HOUSE DESIGNER'S LATEST REVISED SITE PLAN OF AUGUST 6, 2022	08/08/22	T.L.M.



DESIGN	T.L.M.
CHECKED	T.L.M.
DRAWN BY	P.M.
CHECKED	T.L.M.
APPROVED	T.L.M.

PROJECT  
370 CAMBRIDGE STREET NORTH  
LOT 15  
WEST CAMBRIDGE STREET NORTH  
SOUTH OF STONE BOUNDARY  
REGISTERED PLAN 33  
CITY OF OTTAWA

DRAWING TITLE  
**STORM DRAINAGE AREA PLAN**

T.L. MAK ENGINEERING CONSULTANTS LTD. CONSULTING ENGINEERS	
PROJECT No.	DATE
821-155	APRIL 2022
DRAWING No.	D-1