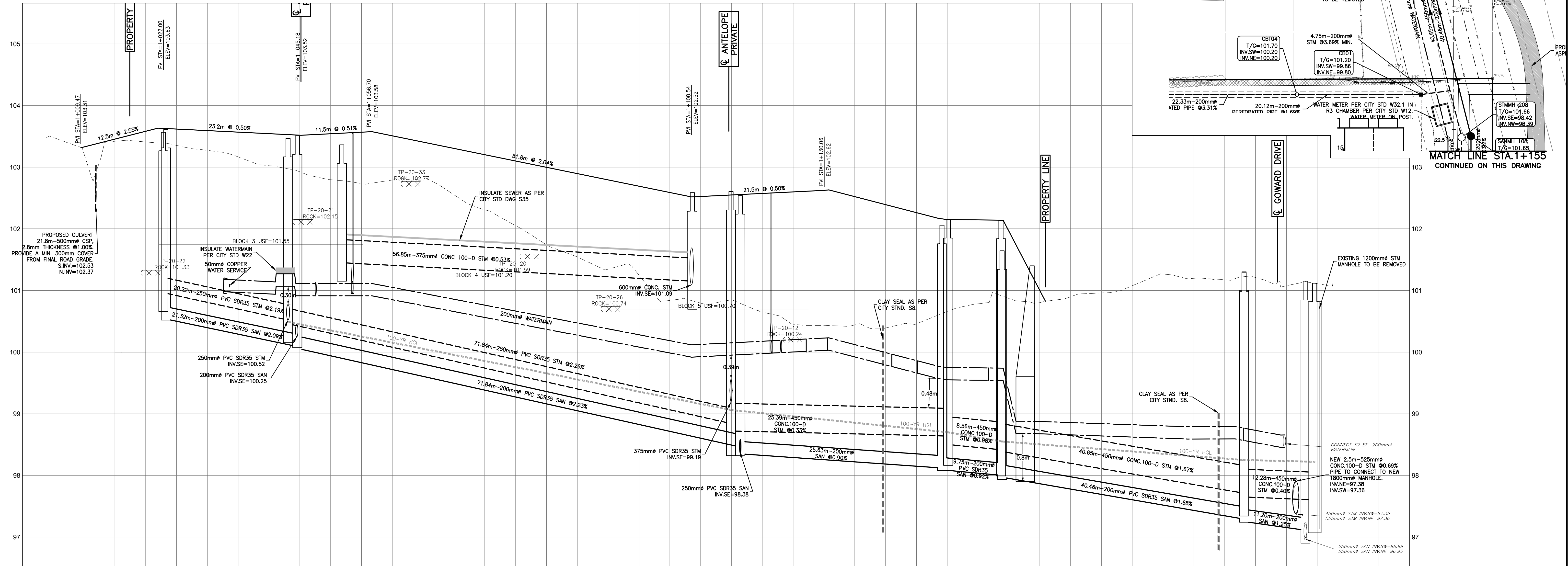
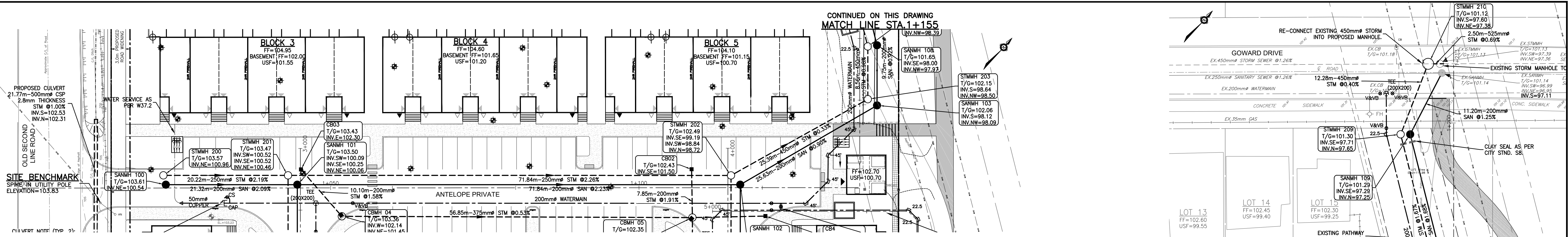


CONTINUED ON THIS DRAWING
MATCH LINE STA 1+155



CHAINAGE	ELEVATIONS PROPOSED EXISTING	TOP OF WATERMAIN ELEVATION	STORM SEWER INVERTS	100-YR STORM SEWER INVERTS	SANITARY SEWER INVERTS	ELEVATION PROPOSED EXISTING	TOP OF WATERMAIN ELEVATION	STORM SEWER INVERTS	SANITARY SEWER INVERTS	CHAINAGE
1+000	103.33	103.33	21.77m-500mm ^Ø STM @ 1.00%			103.33				1+000
1+020	103.45	103.45				103.45				1+020
1+032.7	103.58	103.58	20.22m-250mm ^Ø PVC SDR35 STM @ 2.19%			103.58				1+032.7
1+040	103.62	103.62				103.62				1+040
1+047.2	103.59	103.59				103.59				1+047.2
1+047.6	103.57	103.57				103.57				1+047.6
1+053.8	103.54	103.54				103.54				1+053.8
1+060.0	103.52	103.52				103.52				1+060.0
1+075.0	103.51	103.51				103.51				1+075.0
1+080	103.41	103.41	71.84m-250mm ^Ø PVC SDR35 STM @ 2.26%			103.41				1+080
1+081.6	103.30	103.30				103.30				1+081.6
1+090.0	103.20	103.20				103.20				1+090.0
1+100	103.10	103.10	56.85m-375mm ^Ø PVC SDR35 STM @ 0.53%			103.10				1+100
1+105.0	103.00	103.00				103.00				1+105.0
1+118.1	102.90	102.90				102.90				1+118.1
1+120	102.79	102.79				102.79				1+120
1+124.4	102.69	102.69				102.69				1+124.4
1+125.7	102.59	102.59	25.39m-450mm ^Ø CONC.100-D STM @ 0.33%			102.59				1+125.7
1+129.2	102.49	102.49				102.49				1+129.2
1+140	102.39	102.39				102.39				1+140
1+143.6	102.29	102.29				102.29				1+143.6
1+152	102.19	102.19	9.75m-200mm ^Ø PVC SDR35 SAN @ 0.92%			102.19				1+152
1+160	102.09	102.09				102.09				1+160
1+162.9	101.99	101.99				101.99				1+162.9
1+180	101.89	101.89	40.46m-200mm ^Ø PVC SDR35 SAN @ 1.68%			101.89				1+180
1+200	101.79	101.79				101.79				1+200
1+225	101.69	101.69	11.20m-200mm ^Ø PVC SDR35 SAN @ 1.25%			101.69				1+225

CAUTION
THE POSITION OF ALL POLE LINES, CONDUITS, WATERMANS, SEWERS AND OTHER UNDERGROUND AND OVERGROUND UTILITIES AND STRUCTURES IS NOT NECESSARILY SHOWN ON THE CONTRACT DRAWINGS, AND WHERE SHOWN, THE ACCURACY OF THE POSITION OF SUCH UTILITIES AND STRUCTURES IS NOT GUARANTEED. BEFORE STARTING WORK, DETERMINE THE EXACT LOCATION OF ALL SUCH UTILITIES AND STRUCTURES AND ASSUME ALL LIABILITY FOR DAMAGE TO THEM.

SCALE	DESIGNED BY	REVIEWED BY	DEVELOPER	BASE PLAN	PROJECT	PROJECT No.
0 3m 6m 12m HORIZONTAL 1:300	2 REVISED PER CITY COMMENTS 17/11/23 AAS BMT	1 ISSUED FOR APPROVAL 14/06/23 SAB BMT	THEBERGE HOMES 1600 LAPERRIERE AVENUE, SUITE 205 OTTAWA, ON. K1Z 8P5 613.421.1515	SAB	SECOND LINE ROAD 1158 OLD SECOND LINE ROAD KANATA, ONTARIO.	OTT-00245003-A1
	REV	REVISION DESCRIPTION		DESIGN	PROFILE ANTELOPE PRIVATE STA. 1+000 TO STA. 1+225	SURVEY FSD
				CHECKED		DATE JUNE 2023
				DRAWN		DRAWING No. C05
				PROJECT MANAGER		
				APPROVED		

DESIGNED BY: B. M. THOMAS
REVIEWED BY: B. M. THOMAS
DEVELOPER: THEBERGE HOMES
BASE PLAN: SAB
PROJECT: SECOND LINE ROAD
PROJECT No.: OTT-00245003-A1
SURVEY: FSD
DATE: JUNE 2023
DRAWING No.: C05

THEBERGE HOMES
1600 LAPERRIERE AVENUE, SUITE 205
OTTAWA, ON. K1Z 8P5
613.421.1515

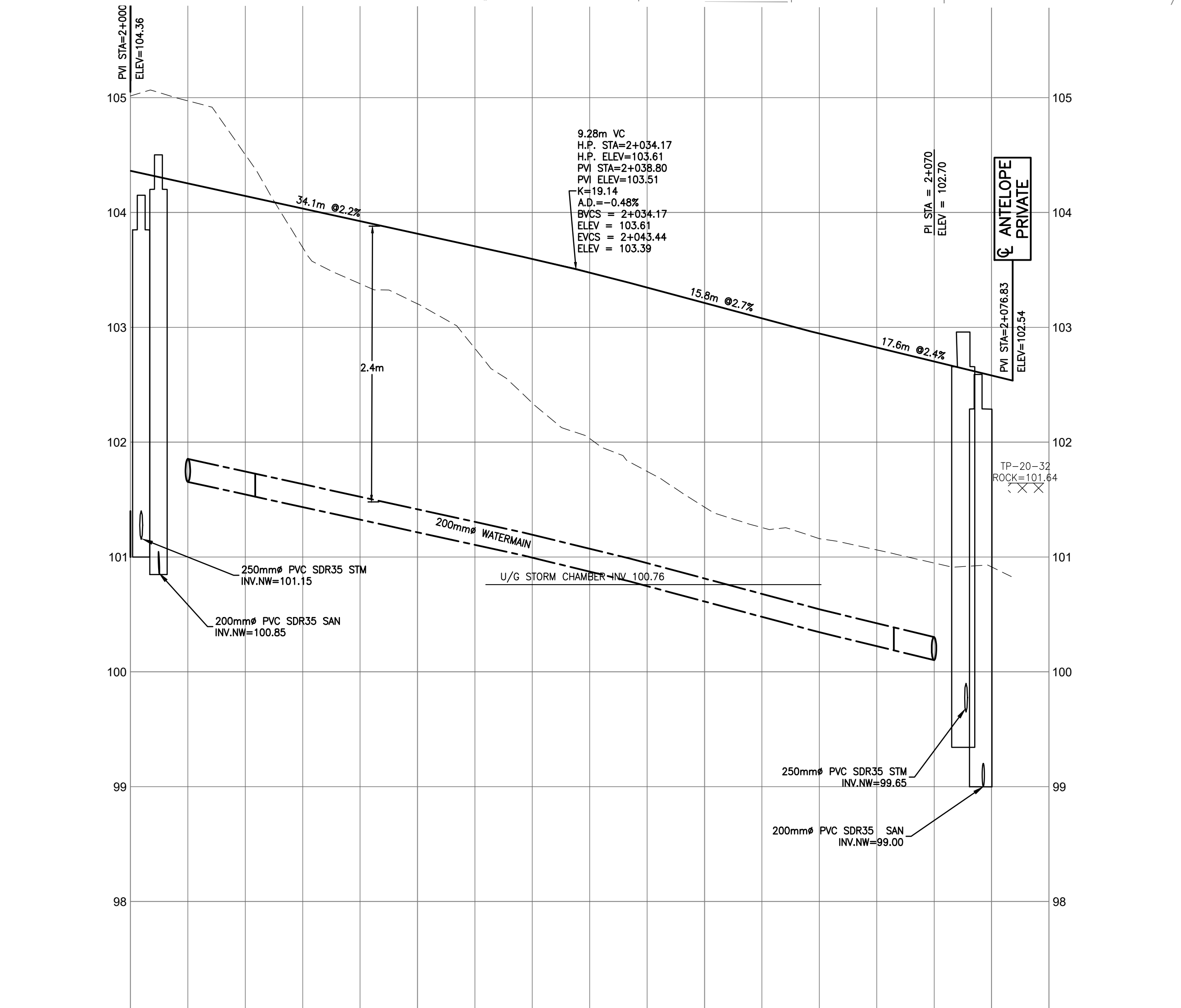
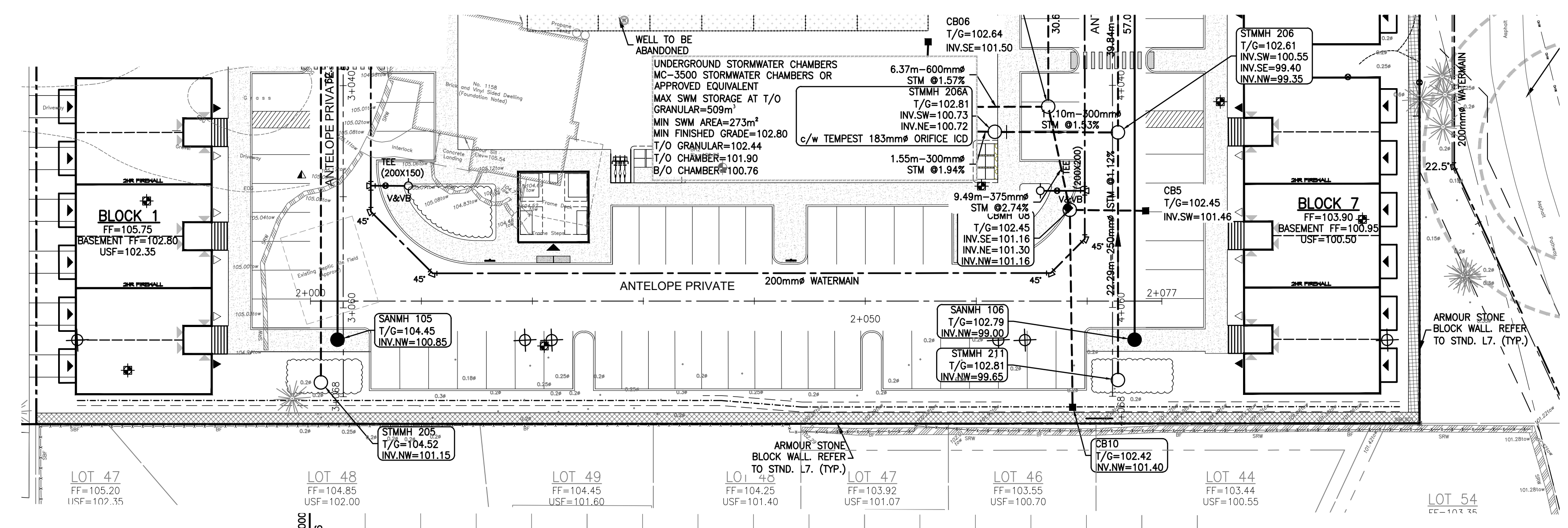
exp. SERVICES INC.
1-813-688-1899 | 1-613-225-7330
2000 Wellington Drive, Unit 100
Ottawa, ON K2B 8R6
Canada
www.exp.com

BASE PLAN: SAB
DESIGN: AS
CHECKED: [Signature]
DRAFTER: SAB
PROJECT MANAGER: BMT
APPROVED: [Signature]

PROJECT: SECOND LINE ROAD
1158 OLD SECOND LINE ROAD
KANATA, ONTARIO.

PROFILE ANTELOPE PRIVATE
STA. 1+000 TO STA. 1+225

OLD SECOND LINE ROAD



STATION	PROPOSED ELEVATION	EXISTING ELEVATION
2+000	104.25	104.25
2+005.0	104.14	104.14
2+010.9	104.03	104.03
2+021.8	103.93	103.93
2+025	103.82	103.82
2+031.5	103.71	103.71
2+037.9	103.60	103.60
2+047.6	103.48	103.48
2+050	103.35	103.35
2+055.8	103.21	103.21
2+060.0	103.08	103.08
2+066.5	102.95	102.95
2+070.0	102.82	102.82
2+075	102.70	102.70
2+080	102.58	102.58

REV	REVISION DESCRIPTION	DATE	BY	APPD
2	REVISED PER CITY COMMENTS	17/11/23	AAS	BMT
1	ISSUED FOR APPROVAL	14/06/23	SAB	BMT

CAUTION
 THE POSITION OF ALL POLE LINES, CONDUITS, WATERMANS, SEWERS AND OTHER UNDERGROUND AND OVERGROUND UTILITIES AND STRUCTURES IS NOT NECESSARILY SHOWN ON THE CONTRACT DRAWINGS, AND WHERE SHOWN, THE ACCURACY OF THE POSITION OF SUCH UTILITIES AND STRUCTURES IS NOT GUARANTEED. BEFORE STARTING WORK, DETERMINE THE EXACT LOCATION OF ALL SUCH UTILITIES AND STRUCTURES AND ASSUME ALL LIABILITY FOR DAMAGE TO THEM.

SCALE
 HORIZONTAL 1:300
 VERTICAL 1:300

DESIGNED BY
 B. M. THOMAS

REVIEWED BY
 B. M. THOMAS

PROFESSIONAL ENGINEER
 B. M. THOMAS
 2023-11-17
 PROVINCE OF ONTARIO

DEVELOPER
THEBERGE HOMES
 1600 LAPERRIERE AVENUE, SUITE 205
 OTTAWA, ON. K1Z 8P5
 613.421.1515

exp. Services Inc.
 1-813-688-1899 | 1-613-225-7330
 3000 Steeles Ave. East, Unit 100
 Downsview, ON M3B 3K6
 Canada
 www.exp.com

BASEPLAN SAB
 DESIGN AS
 CHECKED
 CAD SAB
 PROJECT MANAGER BMT
 APPROVED

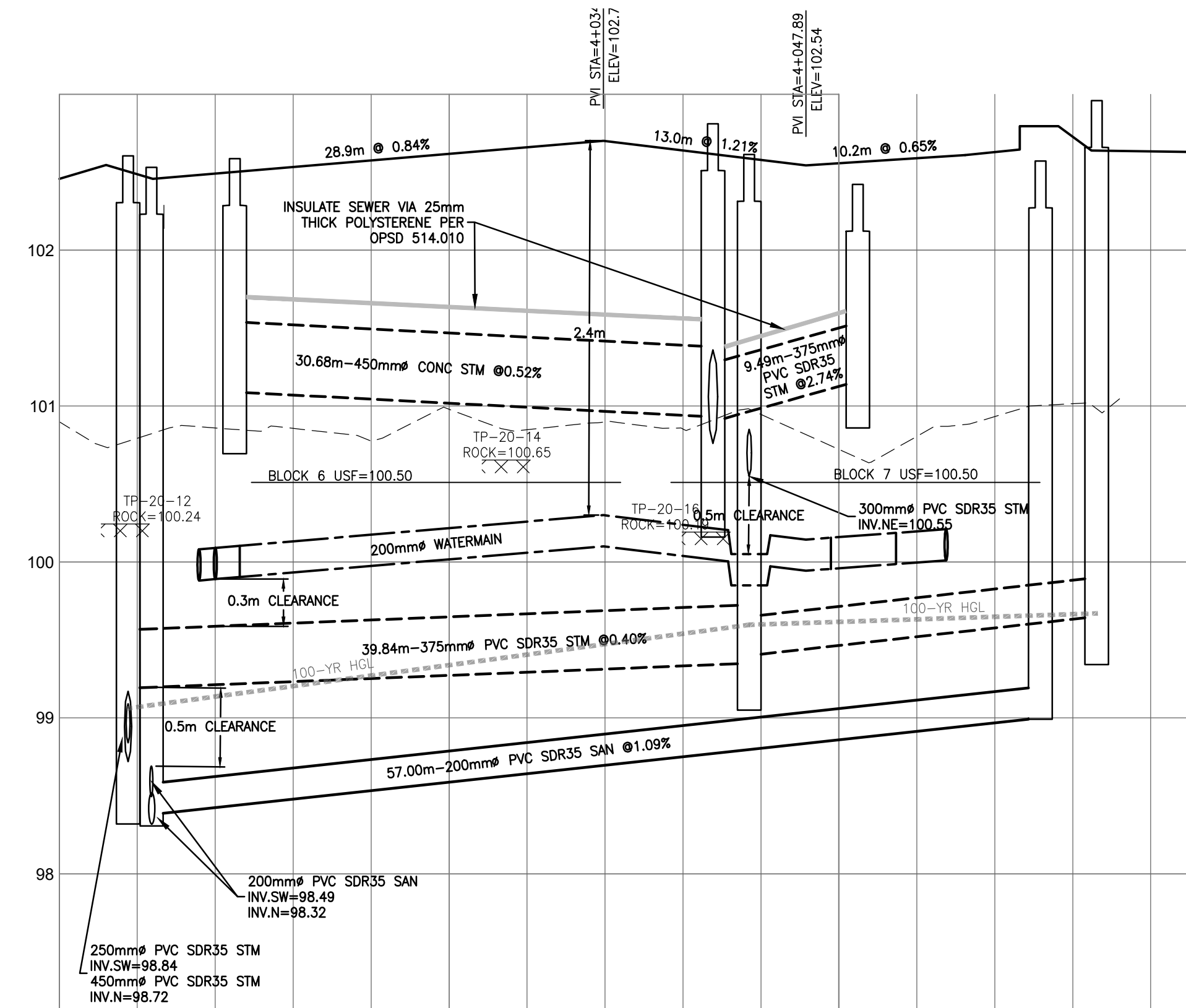
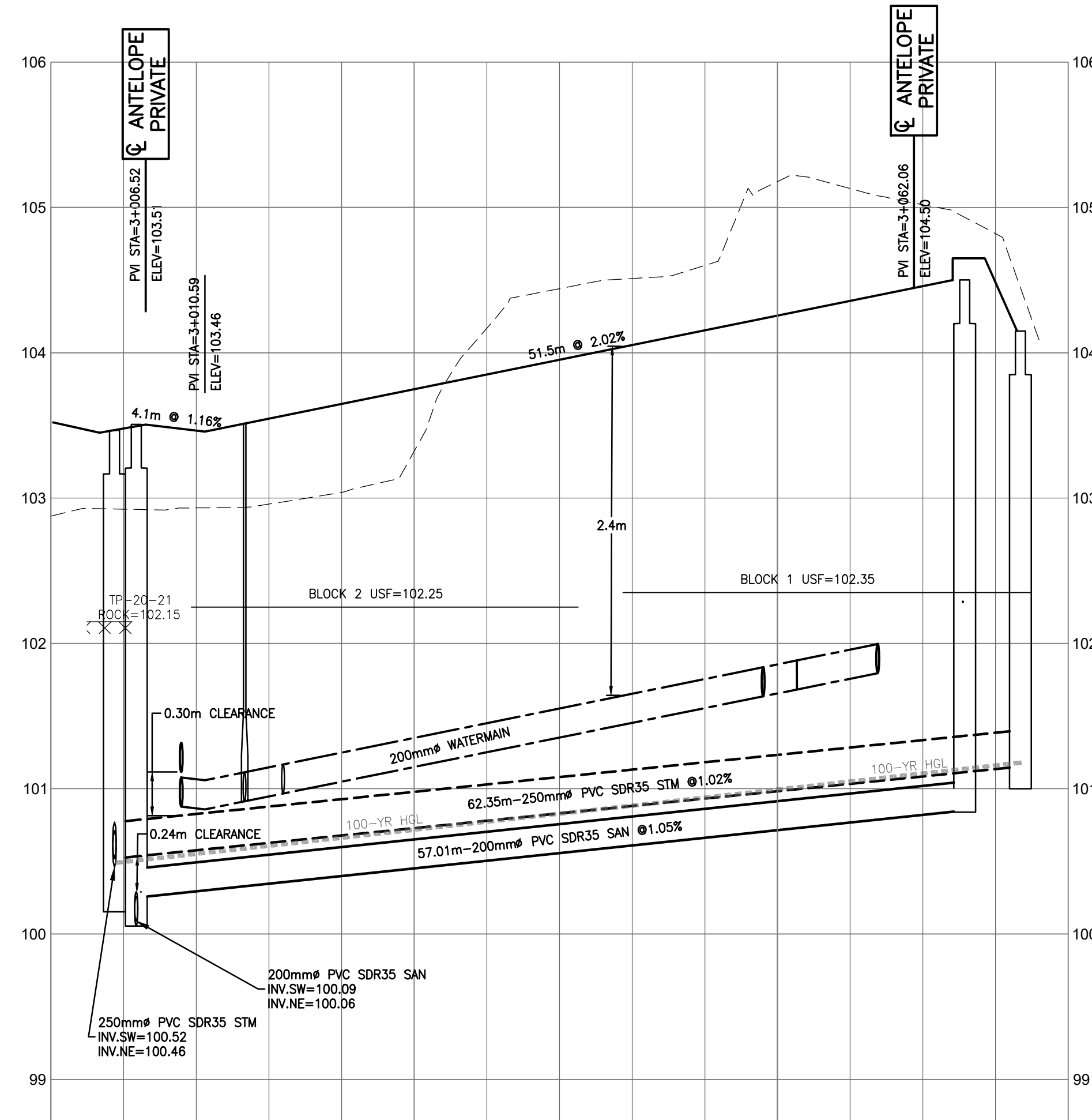
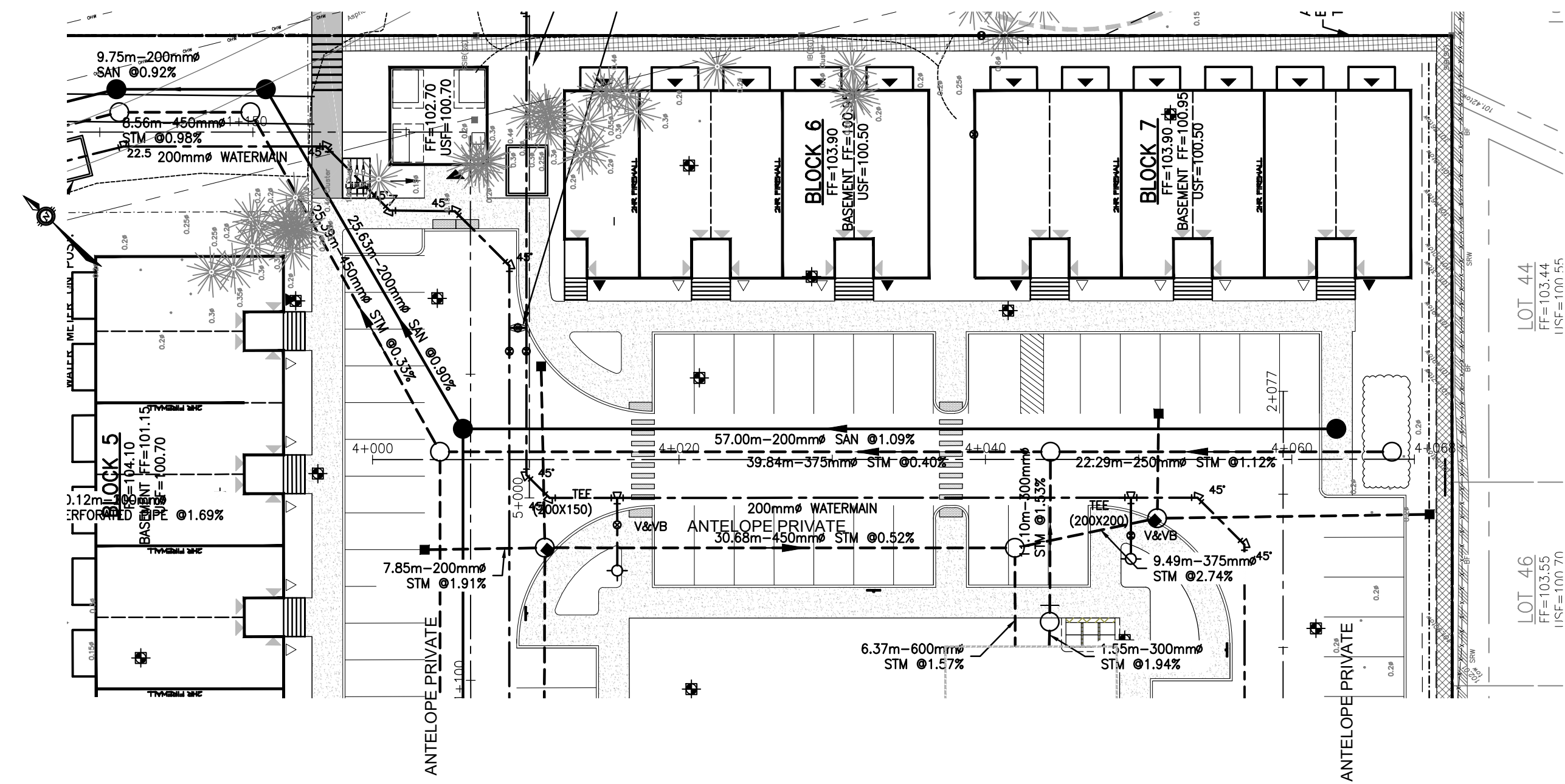
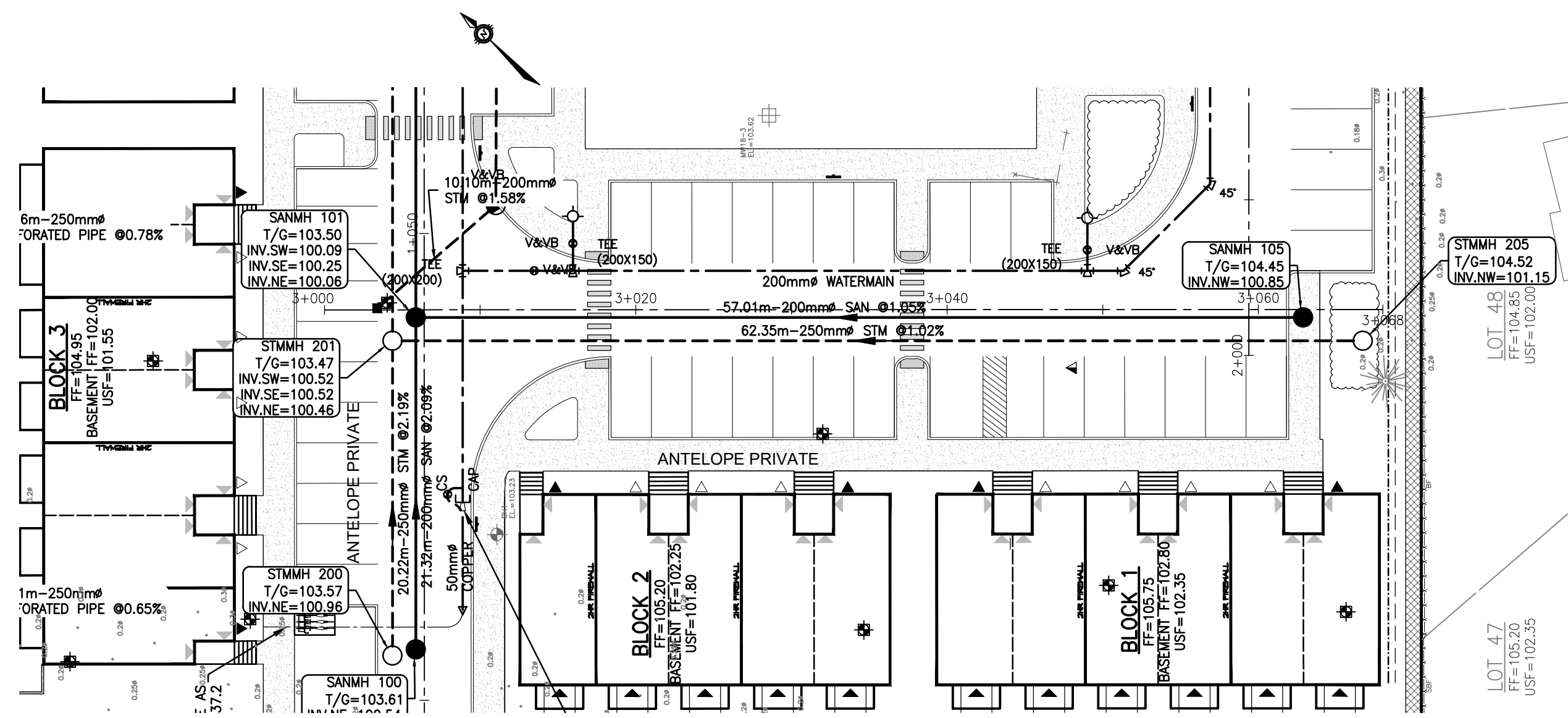
PROJECT
SECOND LINE ROAD
 1158 OLD SECOND LINE ROAD
 KANATA, ONTARIO.

PROJECT No. OTT-00245003-A1
 SURVEY FSD
 DATE JUNE 2023

TITLE
PROFILE ANTELOPE PRIVATE
 STA. 2+000 TO STA. 2+080

DRAWING No. C06

• BUILDINGS • EARTH & ENVIRONMENT • ENERGY • INDUSTRIAL • INFRASTRUCTURE • SUSTAINABILITY •



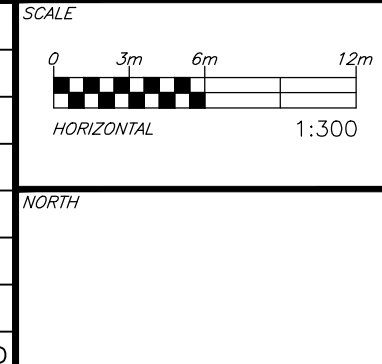
CHAINAGE	102.89	103.49	103.46	103.55	103.65	103.75	103.85	103.95	104.05	104.15	104.26	104.36	104.46	104.87
CHAINAGE	3+000	3+011.4	3+016.0	3+025	3+030.0	3+039.7	3+047.3	3+050.8	3+056.3	3+070				
TOP OF WATERMAIN ELEVATION		101.11	101.17	101.17	101.45	101.65	101.80	101.87	102.00	102.00				
STORM SEWER INVERTS														
SANITARY SEWER INVERTS														

CHAINAGE	102.46	102.49	102.49	102.53	102.57	102.62	102.66	102.70	102.64	102.58	102.56	102.59	102.62	102.67
CHAINAGE	4+000	4+010.0	4+011.6	4+015.9	4+025	4+030.0	4+039.7	4+049.5	4+056.9	4+075				
TOP OF WATERMAIN ELEVATION		100.08	100.10	100.14	100.26	100.26	100.25	100.15	100.19	100.19	100.21	100.21	100.21	100.21
STORM SEWER INVERTS														
SANITARY SEWER INVERTS														

CAUTION
THE POSITION OF ALL POLE LINES, CONDUITS, WATERMANS, SEWERS AND OTHER UNDERGROUND AND OVERGROUND UTILITIES AND STRUCTURES IS NOT NECESSARILY SHOWN ON THE CONTRACT DRAWINGS, AND WHERE SHOWN, THE ACCURACY OF THE POSITION OF SUCH UTILITIES AND STRUCTURES IS NOT GUARANTEED. BEFORE STARTING WORK, DETERMINE THE EXACT LOCATION OF ALL SUCH UTILITIES AND STRUCTURES AND ASSUME ALL LIABILITY FOR DAMAGE TO THEM.

File: 20230614.dwg
 User: BMT
 Date: 2023-06-14 11:02:23 AM
 Plot Date: 2023-06-14 11:02:23 AM
 Plot Scale: 1:300
 Plot Style: BMT.ctb
 Plot Device: HPGL2
 Plot Path: \\server\plotters\hp\hp2000\hp2000.dwg

REV	REVISION DESCRIPTION	DATE	BY	APPD
2	REVISED PER CITY COMMENTS	17/11/23	AAS	BMT
1	ISSUED FOR APPROVAL	14/06/23	SAB	BMT

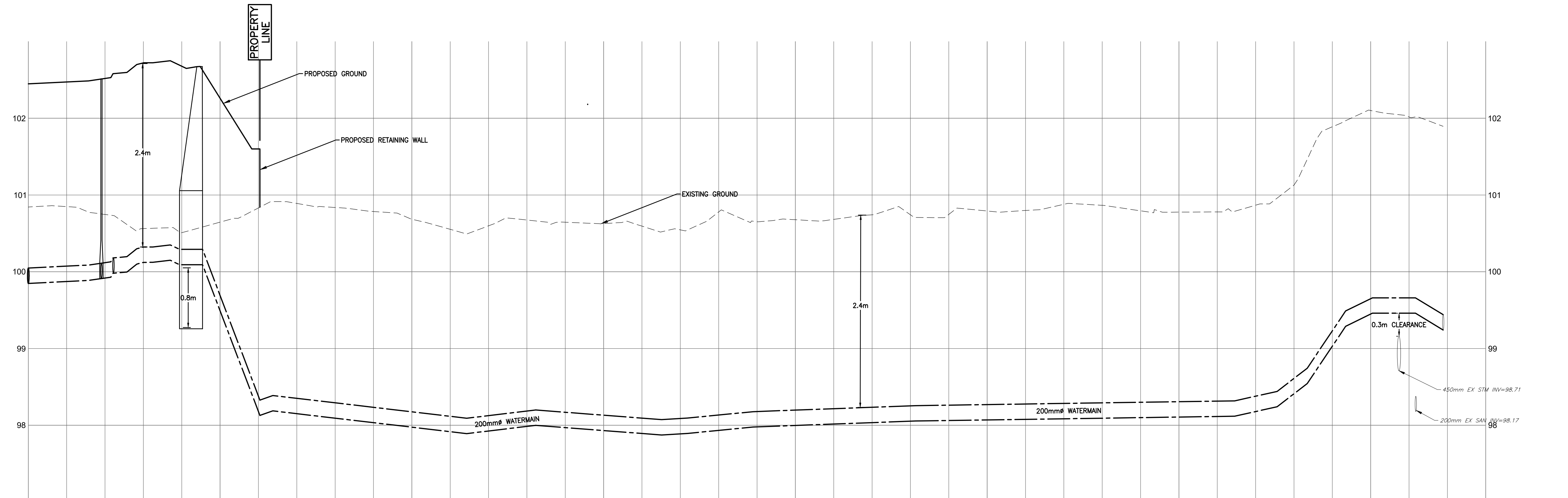
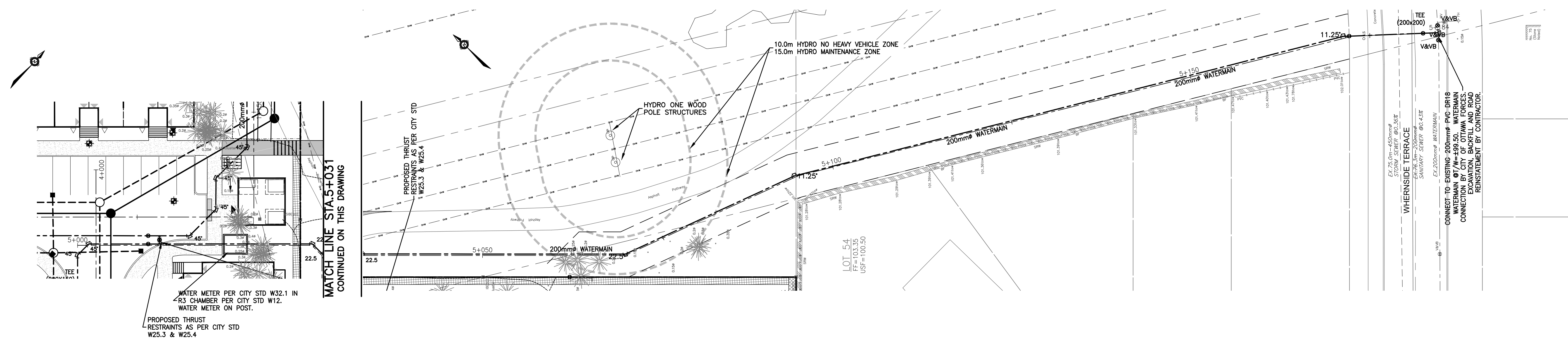


DESIGNED BY: B. M. THOMAS
 REVIEWED BY: B. M. THOMAS
 DEVELOPER: THEBERGE HOMES
 1600 LAPERRIERE AVENUE, SUITE 205
 OTTAWA, ON. K1Z 8P5
 613.421.1515

PROJECT: SECOND LINE ROAD
 1158 OLD SECOND LINE ROAD
 KANATA, ONTARIO.

TITLE: PROFILE ANTELOPE PRIVATE
 STA. 3+000 TO STA. 3+070
 STA. 4+000 TO STA. 4+075

PROJECT No.	OTT-00245003-A1
SURVEY	FSD
DATE	JUNE 2023
DRAWING No.	C07



CHAINAGE	TOP OF WATERMAIN ELEVATION	PROPOSED GROUND	EXISTING GROUND	TOP OF WATERMAIN ELEVATION	CHAINAGE
5+000	98.18	102.00	100.00	98.18	5+000
5+001	98.18	102.00	100.00	98.18	5+001
5+002	98.18	102.00	100.00	98.18	5+002
5+003	98.18	102.00	100.00	98.18	5+003
5+004	98.18	102.00	100.00	98.18	5+004
5+005	98.18	102.00	100.00	98.18	5+005
5+006	98.18	102.00	100.00	98.18	5+006
5+007	98.18	102.00	100.00	98.18	5+007
5+008	98.18	102.00	100.00	98.18	5+008
5+009	98.18	102.00	100.00	98.18	5+009
5+010	98.18	102.00	100.00	98.18	5+010
5+011	98.18	102.00	100.00	98.18	5+011
5+012	98.18	102.00	100.00	98.18	5+012
5+013	98.18	102.00	100.00	98.18	5+013
5+014	98.18	102.00	100.00	98.18	5+014
5+015	98.18	102.00	100.00	98.18	5+015
5+016	98.18	102.00	100.00	98.18	5+016
5+017	98.18	102.00	100.00	98.18	5+017
5+018	98.18	102.00	100.00	98.18	5+018
5+019	98.18	102.00	100.00	98.18	5+019
5+020	98.18	102.00	100.00	98.18	5+020
5+021	98.18	102.00	100.00	98.18	5+021
5+022	98.18	102.00	100.00	98.18	5+022
5+023	98.18	102.00	100.00	98.18	5+023
5+024	98.18	102.00	100.00	98.18	5+024
5+025	98.18	102.00	100.00	98.18	5+025
5+026	98.18	102.00	100.00	98.18	5+026
5+027	98.18	102.00	100.00	98.18	5+027
5+028	98.18	102.00	100.00	98.18	5+028
5+029	98.18	102.00	100.00	98.18	5+029
5+030	98.18	102.00	100.00	98.18	5+030
5+031	98.18	102.00	100.00	98.18	5+031
5+032	98.18	102.00	100.00	98.18	5+032
5+033	98.18	102.00	100.00	98.18	5+033
5+034	98.18	102.00	100.00	98.18	5+034
5+035	98.18	102.00	100.00	98.18	5+035
5+036	98.18	102.00	100.00	98.18	5+036
5+037	98.18	102.00	100.00	98.18	5+037
5+038	98.18	102.00	100.00	98.18	5+038
5+039	98.18	102.00	100.00	98.18	5+039
5+040	98.18	102.00	100.00	98.18	5+040
5+041	98.18	102.00	100.00	98.18	5+041
5+042	98.18	102.00	100.00	98.18	5+042
5+043	98.18	102.00	100.00	98.18	5+043
5+044	98.18	102.00	100.00	98.18	5+044
5+045	98.18	102.00	100.00	98.18	5+045
5+046	98.18	102.00	100.00	98.18	5+046
5+047	98.18	102.00	100.00	98.18	5+047
5+048	98.18	102.00	100.00	98.18	5+048
5+049	98.18	102.00	100.00	98.18	5+049
5+050	98.18	102.00	100.00	98.18	5+050

CAUTION
 THE POSITION OF ALL POLE LINES, CONDUITS, WATERMANS, SEWERS AND OTHER UNDERGROUND AND OVERGROUND UTILITIES AND STRUCTURES IS NOT NECESSARILY SHOWN ON THE CONTRACT DRAWINGS, AND WHERE SHOWN, THE ACCURACY OF THE POSITION OF SUCH UTILITIES AND STRUCTURES IS NOT GUARANTEED. BEFORE STARTING WORK, DETERMINE THE EXACT LOCATION OF ALL SUCH UTILITIES AND STRUCTURES AND ASSUME ALL LIABILITY FOR DAMAGE TO THEM.

REV	REVISION DESCRIPTION	DATE	BY	APPD
2	REVISED PER CITY COMMENTS	17/11/23	AAS	BMT
1	ISSUED FOR APPROVAL	14/06/23	SAB	BMT

SCALE
 0 3m 6m 12m
 HORIZONTAL 1:300

DESIGNED BY
 B. M. THOMAS
 2023-11-17
 PROVINCE OF ONTARIO

DEVELOPER
THEBERGE HOMES
 1600 LAPERRIERE AVENUE, SUITE 205
 OTTAWA, ON. K1Z 8P5
 613.421.1515

exp. Services Inc.
 1-813-688-1899 | 1-613-225-7330
 255 Queen Street East, Unit 100
 Ottawa, ON K2B 8H6
 Canada
 www.exp.com
 • BUILDINGS • EARTH & ENVIRONMENT • ENERGY •
 • INDUSTRIAL • INFRASTRUCTURE • SUSTAINABILITY •

BASE PLAN	PROJECT
SAB	SECOND LINE ROAD
AS	1158 OLD SECOND LINE ROAD
	KANATA, ONTARIO.
SAB	PROFILE ANTELOPE PRIVATE
BMT	STA. 5+000 TO STA. 5+190

DATE	DRAWING No.
JUNE 2023	OTT-00245003-A1
	FSO
	C07-B

PROJECT No. OTT-00245003-A1
 SURVEY FSD
 DATE JUNE 2023
 DRAWING No. C07-B