

GENERAL

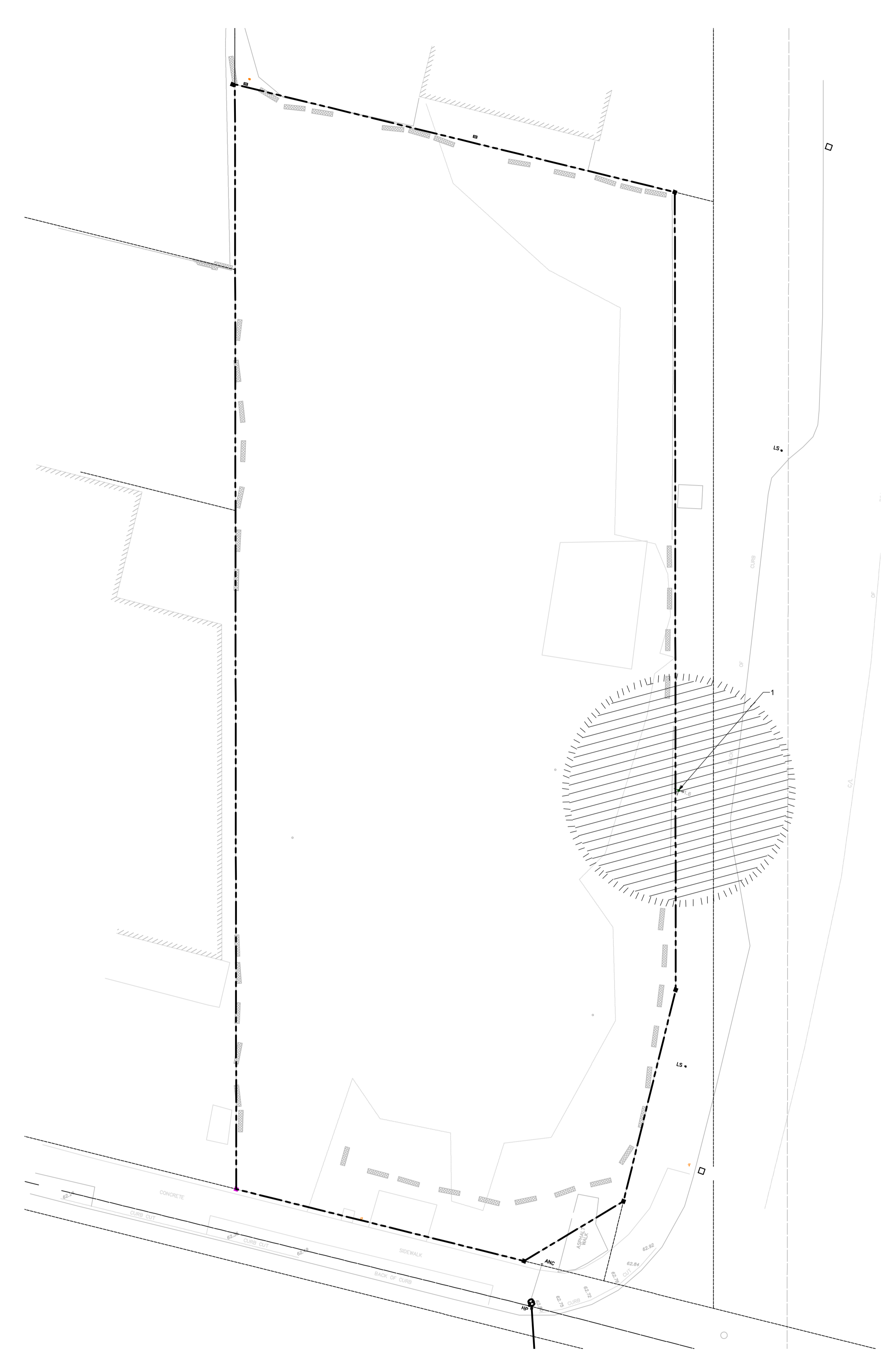
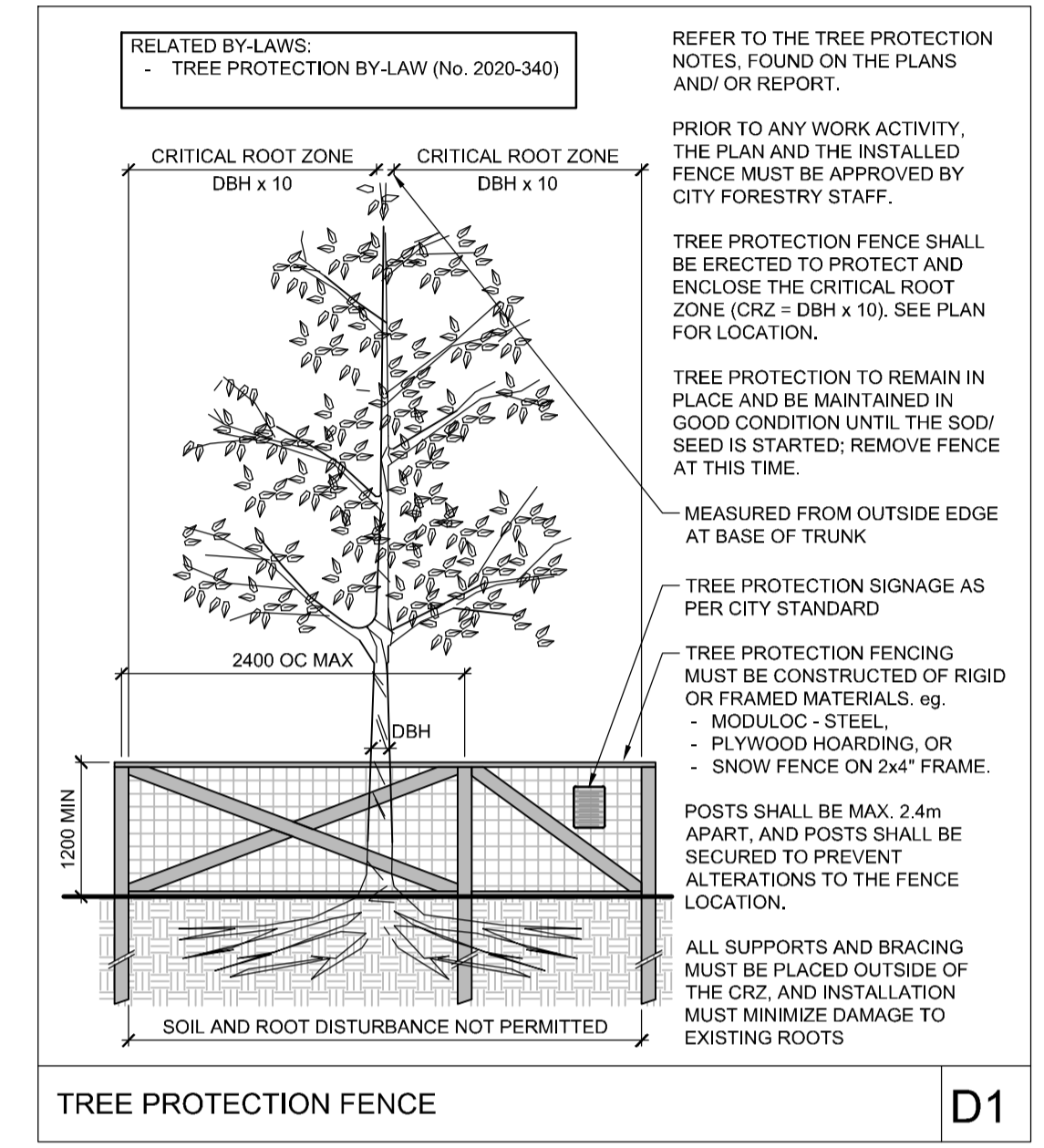
1. Read and interpret this drawing/ drawing set in conjunction with all the contract details and specifications, including related civil, utility, structural, architectural, mechanical, electrical, environmental, geotechnical, and survey information.
2. The Contractor is to determine the exact location, size, material, and elevation of all existing utilities prior to commencing construction. Protect and assume responsibility for all existing utilities regardless of being shown on the drawings.
3. It is essential to use the plans and details in conjunction with the specifications and notes.
4. Do not scale drawings. Work to dimensions only.
5. Protect all existing and retained vegetation for the duration of construction according to the contract details and specifications.
6. Reinstatement all areas and items damaged or disturbed, beyond the Limit of Work, because of construction activities, including but not limited to construction staging areas, haul roads, stockpile areas, etc. to the satisfaction of the Consultant. Unless otherwise noted, Contractor is to reinstate all areas to pre-construction condition or better to the satisfaction of the Contract Administrator.

TREE PROTECTION

1. The Landscape Architect or Certified Arborist is to determine the location of the tree protection fencing and detail it on any associated plans for the site (e.g. tree conservation report, tree disclosure report, etc.).
2. Under the guidance of a Landscape Architect or Certified Arborist, erect a fence at the critical root zone (CRZ) of trees. Diameter at breast height (DBH) is the trunk diameter measured at 1.3m height on the tree trunk. The CRZ is calculated as DBH x 10. Refer to the Tree Protection Fence detail.
3. Refer to the Tree Protection Plan for fence location. City Forestry Staff are to approve both the plan and the installed fence prior to work commencement.
4. Do not place any material or equipment within 2m of the CRZ of any tree, including outhouses.
5. Do not attach any signs, notices, or posters to any tree.
6. Do not disturb, raise, or lower the existing grade within the CRZ without approval.
7. Only tunnel or bore when digging within the CRZ of a tree. Hand work only where required within the CRZ; absolutely no machinery permitted.
8. Do not damage the root system, trunk, or branches, or any tree.
9. Do not extend hard surface or significantly change landscaping.
10. Ensure that exhaust fumes from all equipment are directed away from any tree canopy.
11. When trees marked for removal overlap with the CRZ of trees marked for preservation: cut roots at the edge of the CRZ and grind down stumps after tree removals, do not pull out stumps. Ensure there is not root pulling or disturbance of the ground within the CRZ.
12. Prior to work taking place, notify and consult the Landscape Architect and City Forestry Staff if roots must be cut. Roots 20mm or larger should be cut at right angles with clean, sharp horticultural tools without tearing, crushing, or pulling. Refer to City of Ottawa Specification S.P. F-8011 Tree Protection, Excavation of Root Zone.
13. If damaged or objectionable branches are observed, consult the Landscape Architect, before any work is conducted. Do not prune leaders. Do not prune more than 1/4 of crown.
14. Set up a water and fertilizing program, if trees are being affected by site works, to the satisfaction of the Landscape Architect.
15. The Landscape Architect is to prescribe mitigation measures if the protected fenced area must be reduced to facilitate construction. Measures may include the placement of plywood, wood chips, or steel plating over the roots for protection. City Forestry Staff are to approve said measures prior to fence movement.
16. City of Ottawa By-law: Protects municipal trees and municipal natural areas in the City of Ottawa and trees on private property in the urban area of the City of Ottawa (2020-340).

EXISTING TREE INVENTORY:

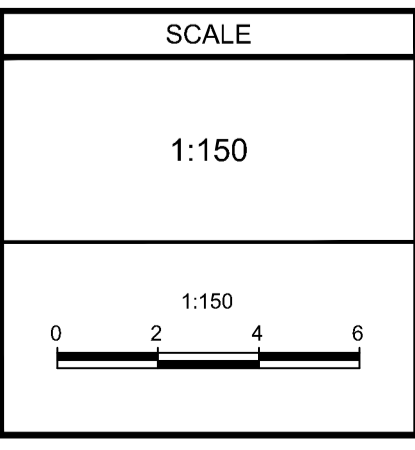
No.	Botanical Name	Common Name	DBH (cm)	CRZ (m)	Condition	Owner	Remarks	Recomm.
1	Acer negundo	Manitoba Maple	65.0	6.50	G	City	2 stems divergent from 1m above grade, both approx. 60-65cm DBH. Multiple branch wounds healing well. Good form	Conflict



NOTE:
THE POSITION OF ALL POLE LINES, CONDUITS, WATERMANS, SEWERS AND OTHER UNDERGROUND AND OVERGROUND UTILITIES AND STRUCTURES IS NOT NECESSARILY SHOWN ON THE CONTRACT DRAWINGS, AND WHERE SHOWN, THE ACCURACY OF THE POSITION OF SUCH UTILITIES AND STRUCTURES IS NOT GUARANTEED. BEFORE STARTING WORK, DETERMINE THE EXACT LOCATION OF ALL SUCH UTILITIES AND STRUCTURES AND ASSUME ALL LIABILITY FOR DAMAGE TO THEM.

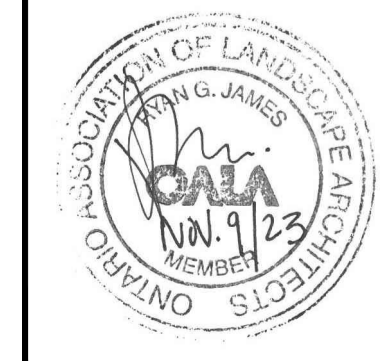
NOT FOR CONSTRUCTION

No.	REVISION	DATE	BY
4.	ISSUED FOR SITE PLAN RESUBMISSION	NOV 9/23	RGJ
3.	ISSUED FOR SITE PLAN RESUBMISSION	JUNE 9/23	RGJ
2.	ISSUED FOR SITE PLAN RESUBMISSION	DEC 16/22	RGJ
1.	ISSUED FOR SITE PLAN APPLICATION	JUNE 20/22	RGJ



DESIGN	MJT
CHECKED	RGJ
DRAWN	MJT
CHECKED	RGJ
APPROVED	RGJ

FOR REVIEW ONLY



NOVATECH
Engineers, Planners & Landscape Architects
Suite 200, 240 Michael Cowpland Drive
Ottawa, Ontario, Canada K2M 1P6
Telephone (613) 254-9643
Facsimile (613) 254-5867
Website www.novatech-eng.com

LOCATION	CITY OF OTTAWA 393 McArthur Avenue
DRAWING NAME	TREE CONSERVATION PLAN
PROJECT No.	121085
REV	REV # 4
DRAWING No.	121085-TCR

M:\2021\121085\CAD\Landscaping\1-Plan\121085_TCR.dwg, L1 (landscape), Dec 16, 2022, 1:36pm, karalilov