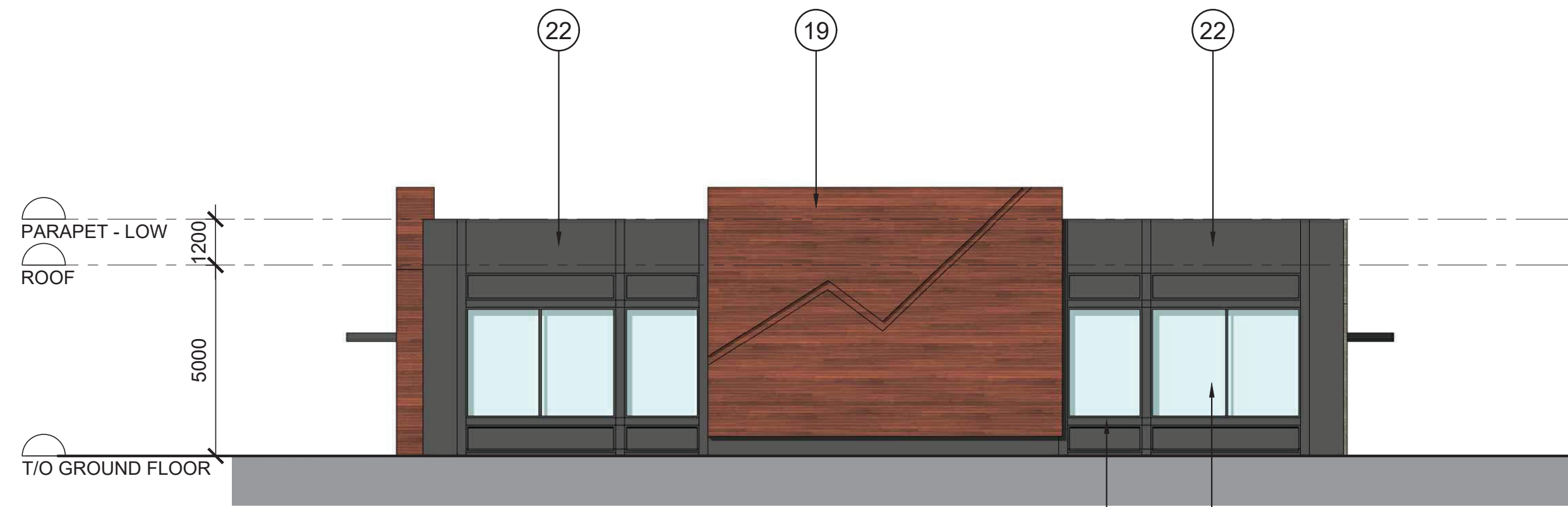




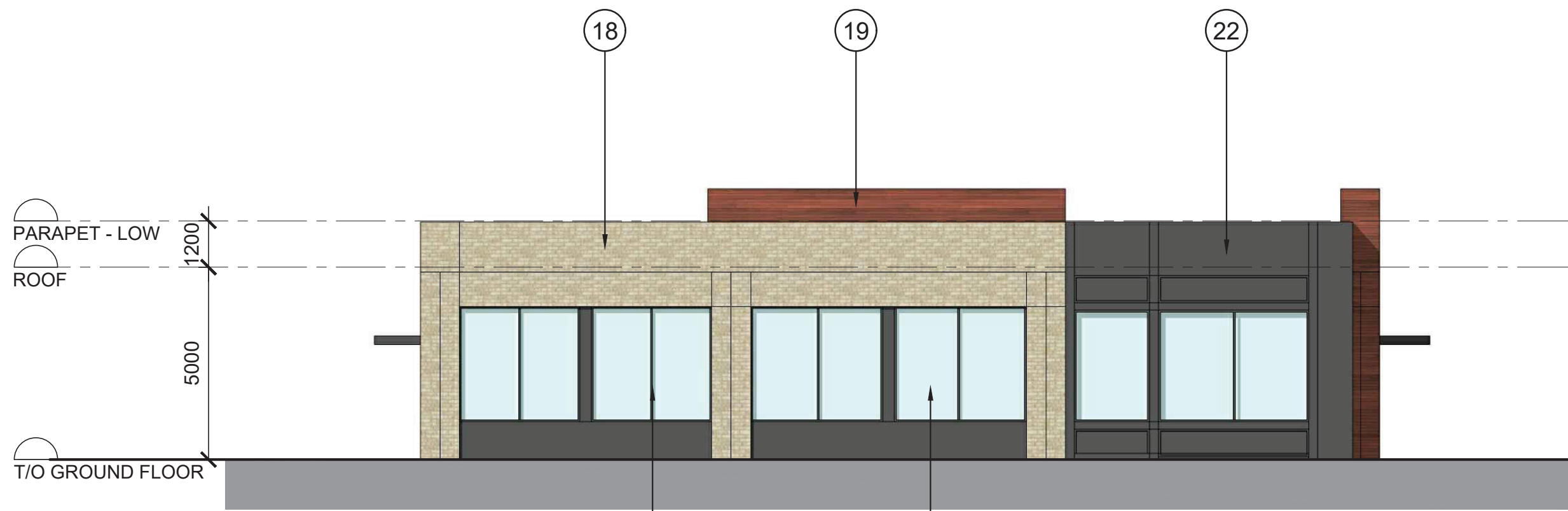
1 NORTH ELEVATION  
SCALE =1:125



2 SOUTH ELEVATION  
SCALE =1:125

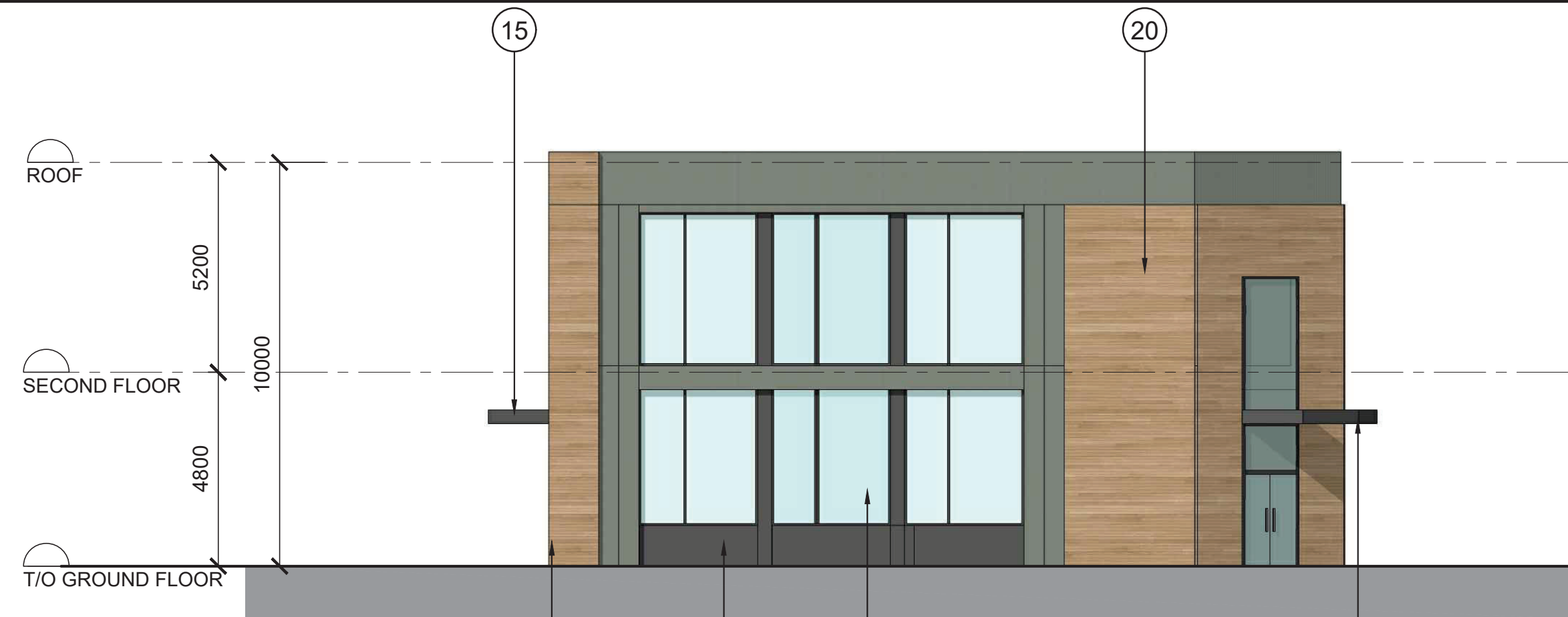


3 EAST ELEVATION  
SCALE =1:125

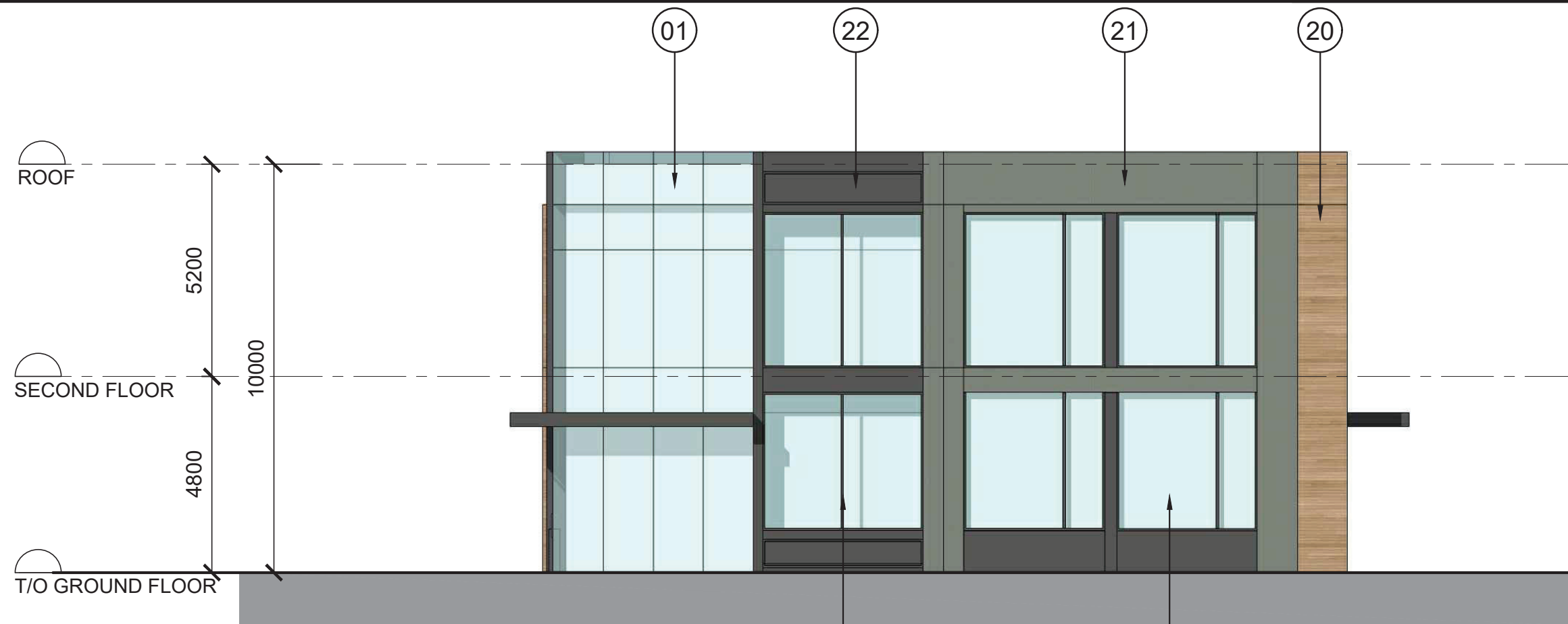


4 WEST ELEVATION  
SCALE =1:125

## BUILDING "B"



5 NORTH ELEVATION  
SCALE =1:125



6 SOUTH ELEVATION  
SCALE =1:125



7 EAST ELEVATION  
SCALE =1:125



8 WEST ELEVATION  
SCALE =1:125

## BUILDING "C"

### EXTERIOR FINISH SCHEDULE

- WINDOWS & DOORS - CLEAR VISION GLASS
- FRAMES - CLEAR ANODIZED ALUMINUM
- FRAMES - PREFINISHED ALUMINUM: COLOUR IRON ORE
- ALUMINUM COMPOSITE PANELS, CLEAR ANODIZED ALUMINUM
- ALUMINUM COMPOSITE PANELS, TOR RED
- ALUMINUM COMPOSITE PANELS, SANDSTONE
- EIFS: COLOUR GRANITSTONE
- BRICK: MELVILLE SLIK BRICK BY PERMICON, COLOUR OCKLAND BLACK
- ARCHITECTURAL BLOCK: BY RICHVALE YORK BLOCK, COLOUR DARK CHARCOAL
- BRICK SILL: DIAMOND BLACK
- PREFINISHED ALUMINUM PLATE PANELS: COLOUR SANDSTONE
- PREFINISHED METAL SIDING, BY VICWEST: COLOUR STONE GREY
- PREFINISHED METAL SIDING, BY VICWEST: COLOUR CHARCOAL
- PREFINISHED METAL CAP FLASHING: COLOUR STONE GREY
- PREFINISHED METAL CAP FLASHING: COLOUR CHARCOAL
- PREFINISHED INSULATED METAL OVERHEAD DOORS: COLOUR WHITE
- EXPOSED CONCRETE FOUNDATION WALL PARGED FINISH
- BRICK: LIGHT BROWN
- PREFINISHED METAL SIDING BY LONGBOARD: COLOUR DARK WALNUT
- PREFINISHED METAL SIDING BY LONGBOARD: COLOUR LIGHT FIR
- PREFINISHED METAL PANELS BY ALUCOBOND: COLOUR STEEL CITY SILVER MICA
- PREFINISHED METAL PANELS BY ALUCOBOND: COLOUR GRAPHITE MICA
- PREFINISHED INSULATED METAL OVERHEAD DOORS: COLOUR CHARCOAL

APPROVED  
By Lily Xu at 11:31 am, Nov 10, 2023

LILY XU, MCIP, RPP  
MANAGER, DEVELOPMENT REVIEW SOUTH  
PLANNING, INFRASTRUCTURE & ECONOMIC  
DEVELOPMENT DEPARTMENT, CITY OF OTTAWA

IT IS THE RESPONSIBILITY OF THE APPROPRIATE CONTRACTOR TO CHECK AND VERIFY ALL DIMENSIONS ON SITE AND TO REPORT ALL ERRORS AND/OR OMISSIONS TO THE ARCHITECT.  
ALL CONTRACTORS MUST COMPLY WITH ALL PERTINENT CODES AND BY-LAWS.  
THIS DRAWING MAY NOT BE USED FOR CONSTRUCTION UNTIL SIGNED BY THE ARCHITECT.  
DO NOT SCALE DRAWINGS.  
COPYRIGHT RESERVED.

### NOTATION SYMBOLS:

- INDICATES DRAWING NOTES, LISTED ON EACH SHEET.
- INDICATES ASSEMBLY TYPE; REFER TO TYPICAL ASSEMBLIES SCHEDULE.
- INDICATES WINDOW TYPE; REFER TO WINDOW ELEVATIONS AND DETAILS ON A900 SERIES.
- INDICATES DOOR TYPE; REFER TO DOOR SCHEDULE AND DETAILS ON A500 SERIES.
- DETAIL NUMBER
- TITLE
- DETAIL REFERENCE PAGE
- DETAIL CROSS REFERENCE PAGE

REVISED FOR 2nd ROUND OF COMMENTS	May 20, 21
ISSUED FOR SPC ROUND #1 COMMENTS	Apr. 20, 21
No. DESCRIPTION	DATE

#### REVISIONS:



NORTH ARROW:

CLIENT:

**metro**

25 Vickers Rd Bldg A - 2 Floor, Etobicoke Ont M9B 1C1  
Tel: 416-234-8118 Fax: 416-234-8927

ARCHITECT:

**rla/architecture**  
roderick lahey architect inc.  
56 beech street, ottawa, ontario K1S 3J6  
t. 613.724.9932 f. 613.724.1209 rlaarchitecture.ca

PROJECT TITLE:

**METRO - BARRHAVEN  
GREENBANK ROAD @  
CAMBRIAN ROAD**  
OTTAWA ONTARIO

SHEET TITLE:

**BUILDING "B - C"  
ELEVATIONS**

DRAWN:

TZ

SCALE:

1:125

PROJECT No.

1949

CHECKED:

R.V.

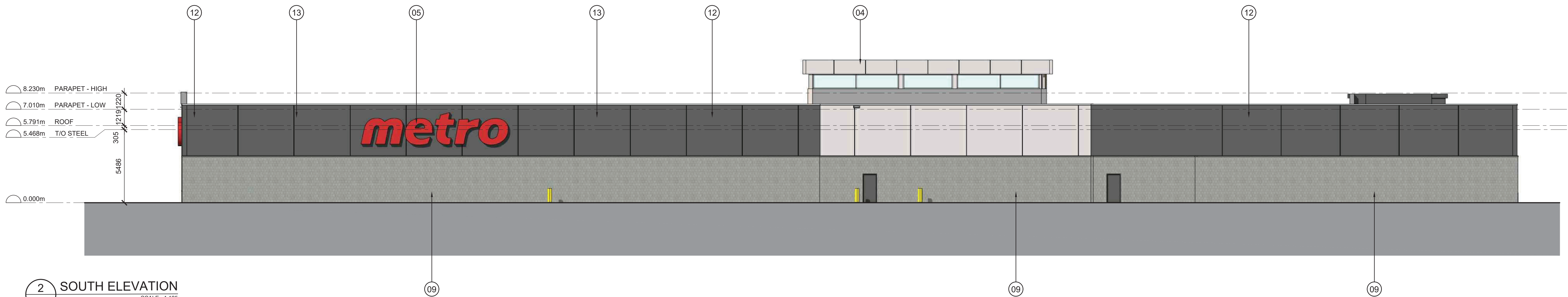
SHEET No.

**A-01**

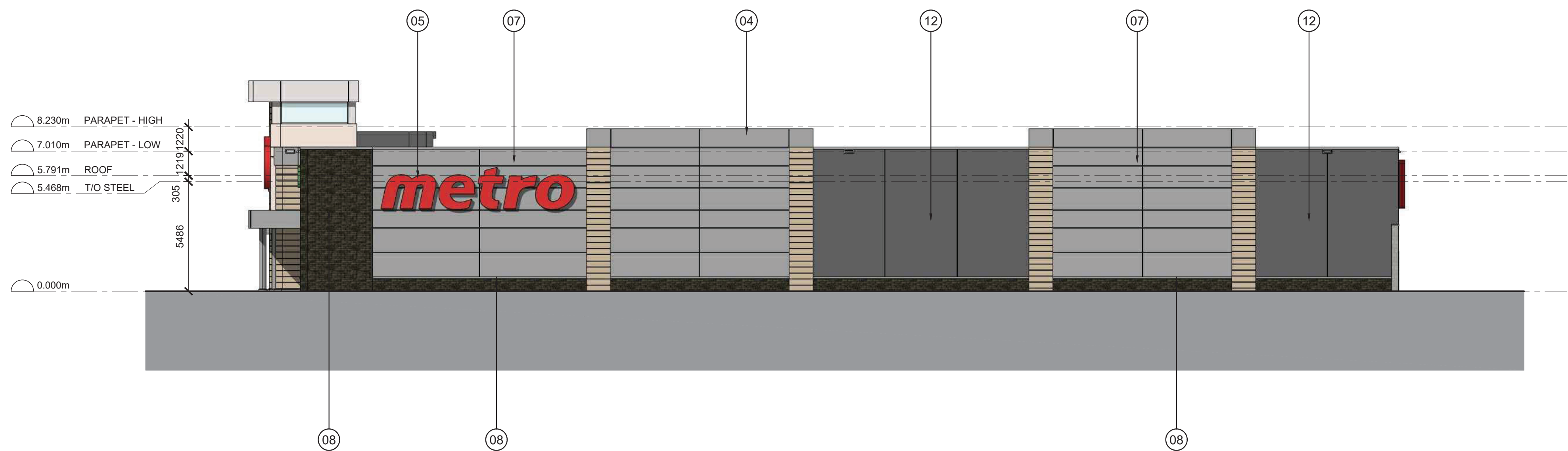




1 NORTH ELEVATION  
SCALE = 1:150



2 SOUTH ELEVATION  
SCALE = 1:125



2 WEST ELEVATION  
SCALE = 1:150



4 EAST ELEVATION  
SCALE = 1:125

APPROVED  
By Lily Xu at 11:32 am, Nov 10, 2023

*[Signature]*

LILY XU, MCIP, RPP  
MANAGER, DEVELOPMENT REVIEW SOUTH  
PLANNING, INFRASTRUCTURE & ECONOMIC  
DEVELOPMENT DEPARTMENT, CITY OF OTTAWA

IT IS THE RESPONSIBILITY OF THE APPROPRIATE CONTRACTOR TO CHECK AND VERIFY ALL DIMENSIONS ON SITE AND TO REPORT ALL ERRORS AND/OR OMISSIONS TO THE ARCHITECT.  
ALL CONTRACTORS MUST COMPLY WITH ALL PERTINENT CODES AND BY-LAWS.  
THIS DRAWING MAY NOT BE USED FOR CONSTRUCTION UNTIL SIGNED BY THE ARCHITECT.  
DO NOT SCALE DRAWINGS.  
COPYRIGHT RESERVED.

NOTATION SYMBOLS:

- 00 INDICATES DRAWING NOTES, LISTED ON EACH SHEET.  
00 INDICATES ASSEMBLY TYPE; REFER TO TYPICAL ASSEMBLIES SCHEDULE.  
00 INDICATES WINDOW TYPE; REFER TO WINDOW ELEVATIONS AND DETAILS ON A000 SERIES.  
000 INDICATES DOOR TYPE; REFER TO DOOR SCHEDULE AND DETAILS ON A000 SERIES.  
—DETAIL NUMBER  
00 TITLE  
—DETAIL REFERENCE PAGE  
—DETAIL CROSS REFERENCE PAGE

EXTERIOR FINISH SCHEDULE

- 1 WINDOWS & DOORS - CLEAR VISION GLASS  
2 FRAMES - CLEAR ANODIZED ALUMINUM  
3 FRAMES - PREFINISHED ALUMINUM: COLOUR IRON ORE  
4 ALUMINUM COMPOSITE PANELS, CLEAR ANODIZED ALUMINUM  
5 ALUMINUM COMPOSITE PANELS, TOR RED  
6 ALUMINUM COMPOSITE PANELS, SANDSTONE  
7 EIFS: COLOUR GRANITSTONE  
8 BRICK: MELVILLE SLIK BRICK BY PERMICON, COLOUR OCKLAND BLACK  
9 ARCHITECTURAL BLOCK: BY RICHVALE YORK BLOCK, COLOUR DARK CHARCOAL  
10 BRICK SILL: DIAMOND BLACK  
11 PREFINISHED ALUMINUM PLATE PANELS: COLOUR SANDSTONE  
12 PREFINISHED METAL SIDING, BY VICWEST: COLOUR STONE GREY  
13 PREFINISHED METAL SIDING, BY VICWEST: COLOUR CHARCOAL  
14 PREFINISHED METAL CAP FLASHING: COLOUR STONE GREY  
15 PREFINISHED METAL CAP FLASHING: COLOUR CHARCOAL  
16 PREFINISHED INSULATED METAL OVERHEAD DOORS: COLOUR WHITE  
17 EXPOSED CONCRETE FOUNDATION WALL: PARGED FINISH  
18 BRICK: LIGHT BROWN  
19 PREFINISHED METAL SIDING BY LONGBOARD: COLOUR DARK WALNUT  
20 PREFINISHED METAL SIDING BY LONGBOARD: COLOUR LIGHT FIR  
21 PREFINISHED METAL PANELS BY ALUCOBOND: COLOUR STEEL CITY SILVER MICA  
22 PREFINISHED METAL PANELS BY ALUCOBOND: COLOUR GRAPHITE MICA  
23 PREFINISHED INSULATED METAL OVERHEAD DOORS: COLOUR CHARCOAL

REVISOR	REVISION	DATE
2	REVISED FOR 2nd ROUND OF COMMENTS	May 20, 21
1	ISSUED FOR SPC ROUND #1 COMMENTS	Apr. 20, 21

ARCHITECT SEAL:	NORTH ARROW:
SEAL DATE: STAMP DATE	

CLIENT:

**metro**

25 Vickers Rd Bldg A - 2 Floor, Etobicoke Ont M9B 1C1  
Tel: 416-234-8118 Fax 416-234-8927

ARCHITECT:

**rla/architecture**  
roderick lahey architect inc.

56 beech street, ottawa, ontario K1S 3J6  
t. 613.724.9932 f. 613.724.1209 rlaarchitecture.ca

PROJECT TITLE:

**METRO - BARRHAVEN**  
**GREENBANK ROAD @**  
**CAMBRIAN ROAD**  
OTTAWA ONTARIO

SHEET TITLE:

**BUILDING "A - B"**  
**ELEVATIONS**

DRAWN: TZ	CHECKED: R.V.
SCALE: 1:150	SHEET No.:
PROJECT No. 1949	<b>A-02</b>