

*G. Wildman*

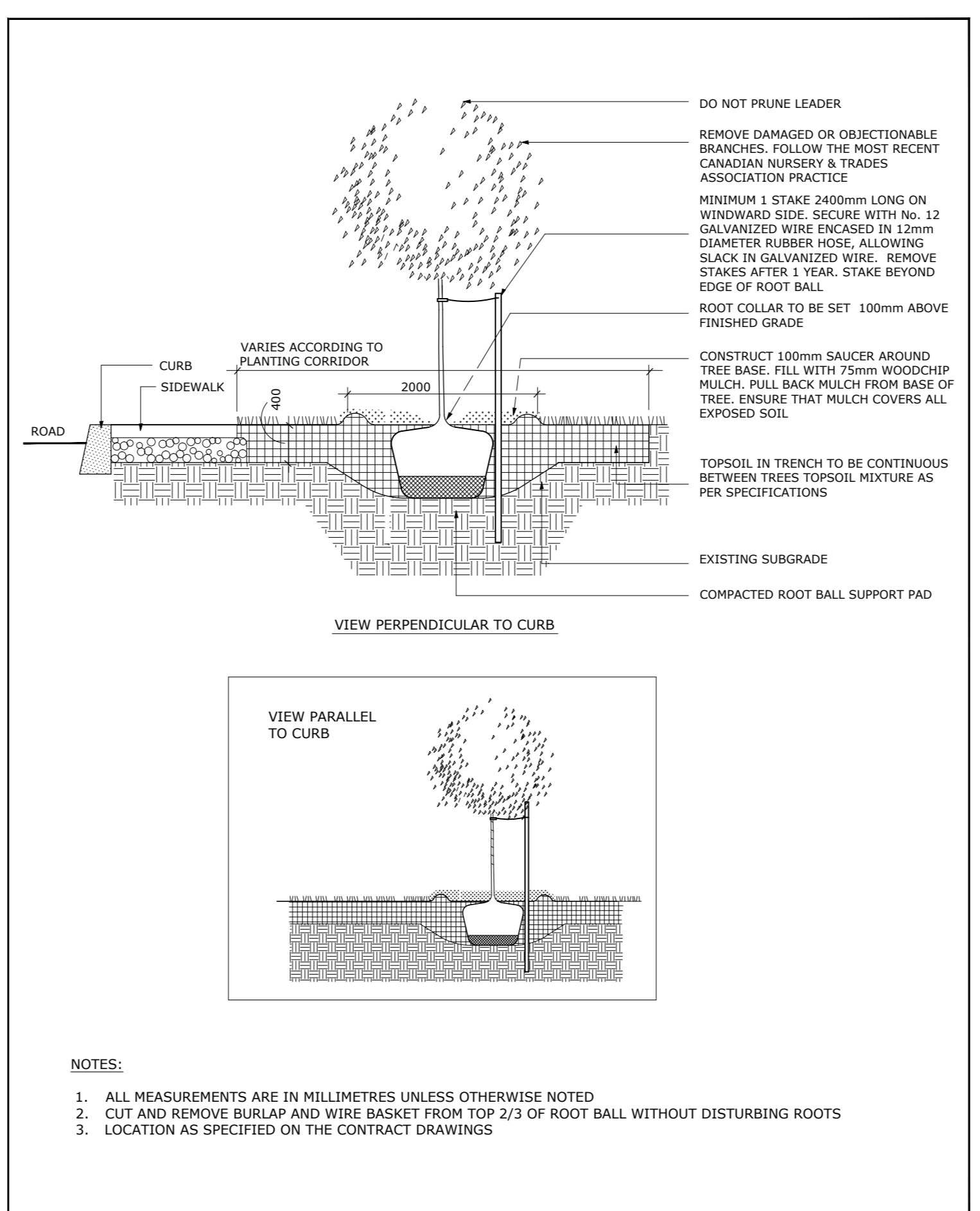
**GERALDINE WILDMAN**  
**ACTING MANAGER, DEVELOPMENT REVIEW, EAST**  
**PLANNING, REAL ESTATE & ECONOMIC DEVELOPMENT**  
**DEPARTMENT, CITY OF OTTAWA**

**APPROVED**  
 By Geraldine Wildman at 7:03 pm, Nov 07, 2023

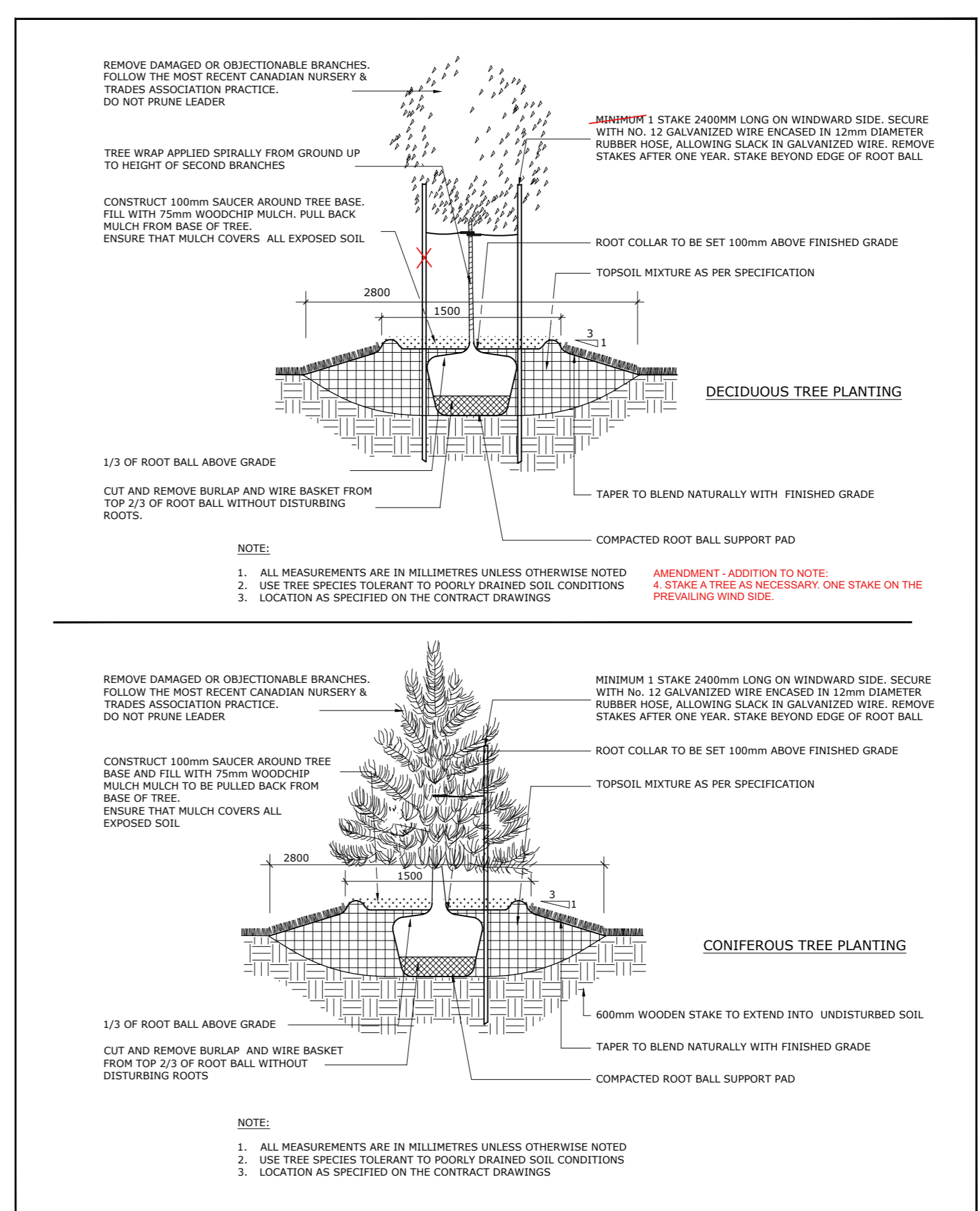
**NOTES:**

**TREES ARE TO BE INSTALLED AS PER CITY STANDARD DETAILS; SOIL VOLUME AS PER BELOW NOTES AND MATRIX ON SHEET L-01.**

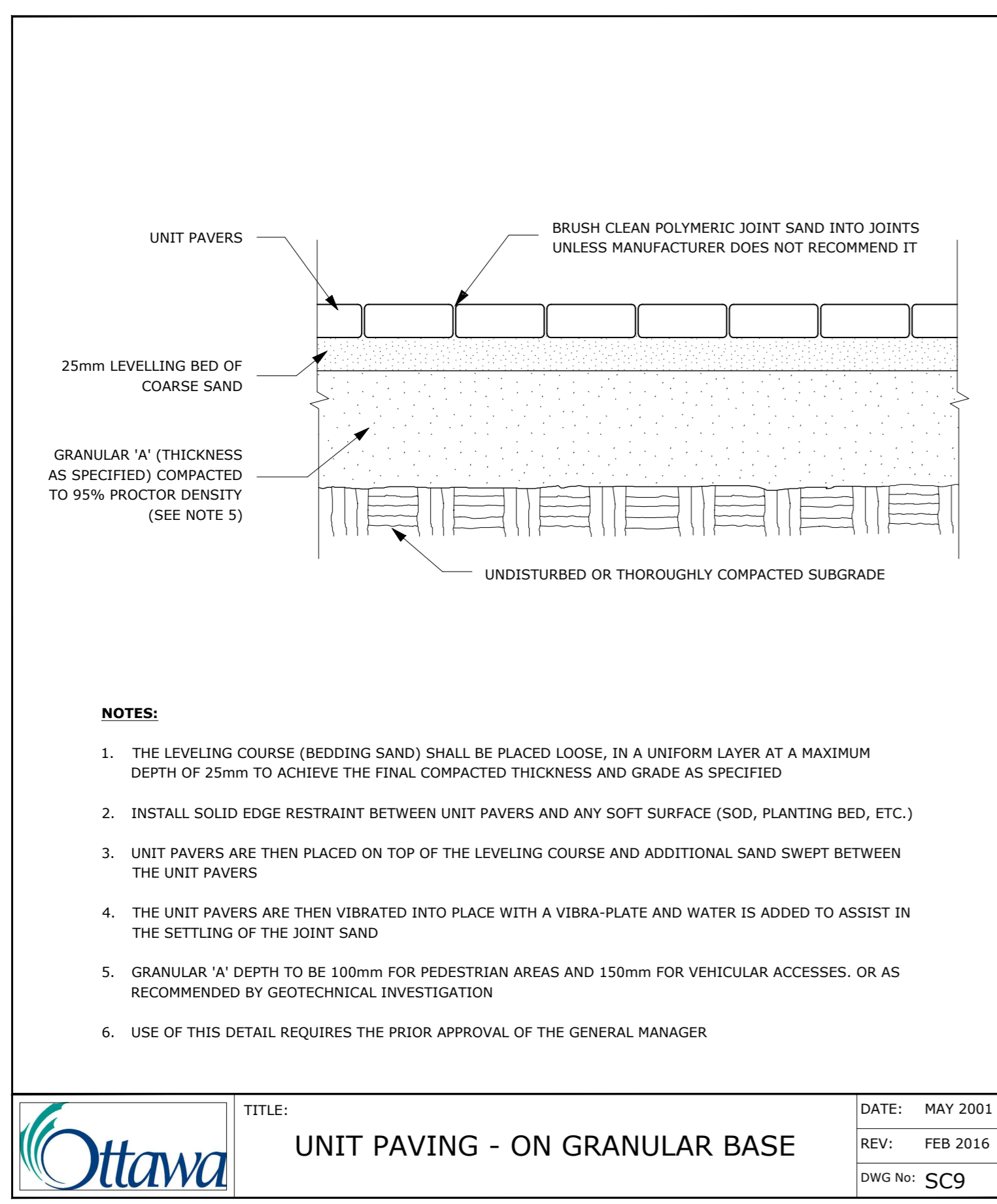
- STANDARD TREE SOIL VOLUMES QUANTITIES INCLUDE THE TOP 900-1000mm OF SOIL/EXISTING SUBSOIL LAYER TO CALCULATE TOTAL SOIL VOLUMES REQUIRED BY THE CITY OF OTTAWA FOR SUSTAINABLE TREE GROWTH. WHERE LARGER SOFT AREAS ARE AVAILABLE, THE TOP 400-500mm LAYER IS USED TO CALCULATE SOIL VOLUMES.
- WHERE EXISTING MATERIAL BELOW THE SPECIFIED TOPSOIL IS NOT CONDUCTIVE TO TREE GROWTH, AN ADDITIONAL LAYER OF PLANTING MEDIUM IS TO BE INSTALLED BELOW SPECIFIED TOPSOIL DEPTH TO OBTAIN THE SOIL VOLUME DEPTH REQUIRED.
- REFER TO SOIL VOLUME MATRIX AND PLANS FOR AREA WHERE TREE SOIL VOLUMES ARE REQUIRED.



**Ottawa** TITLE: PLANTING TRENCH WELL DRAINED SOILS DATE: MAY 2001  
 REV: JAN 2017  
 DWG No: L1

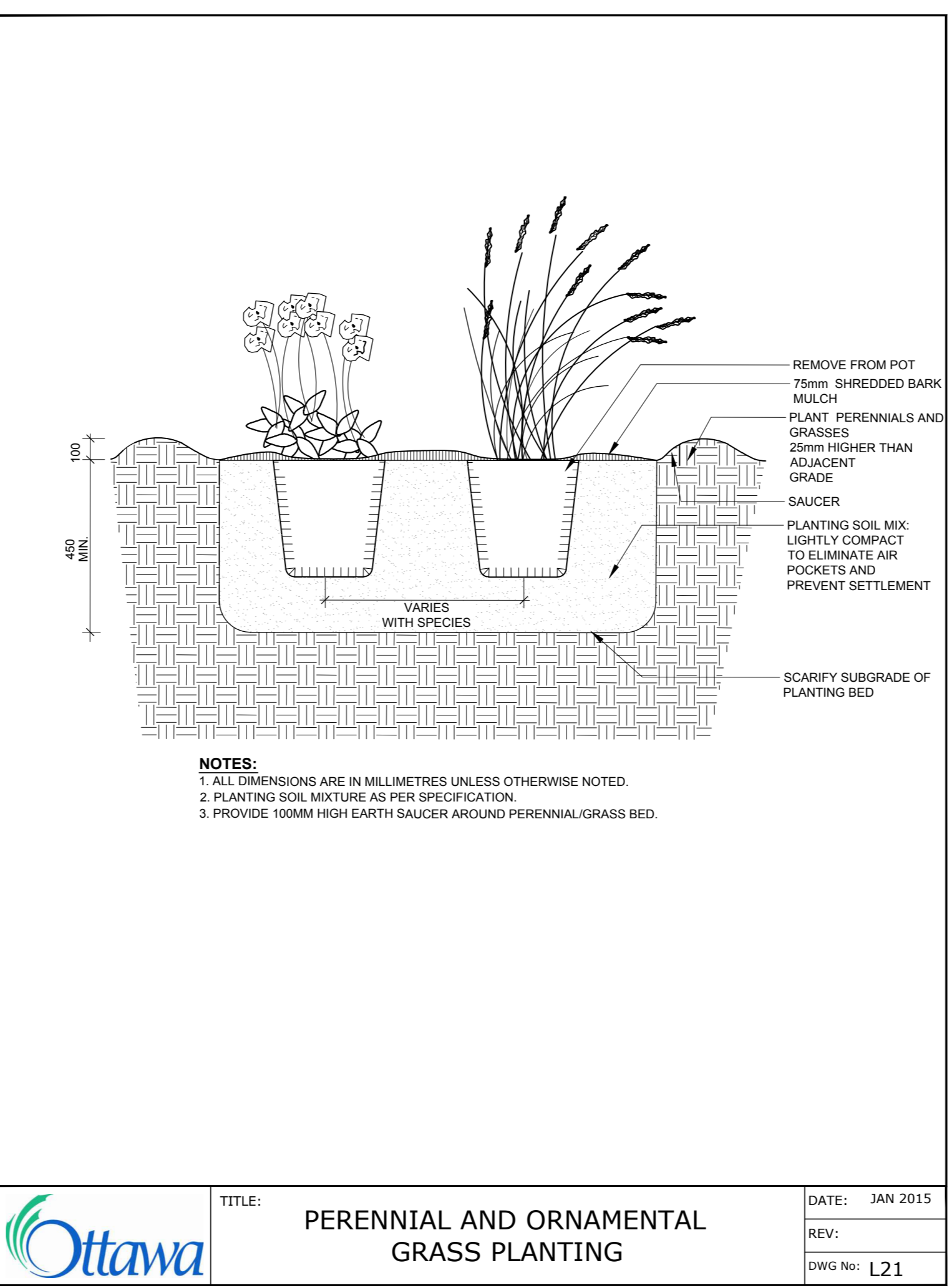


**Ottawa** TITLE: PLANTING PIT POORLY DRAINED SOILS DATE: MAY 2001  
 REV: FEB 2017  
 DWG No: L6

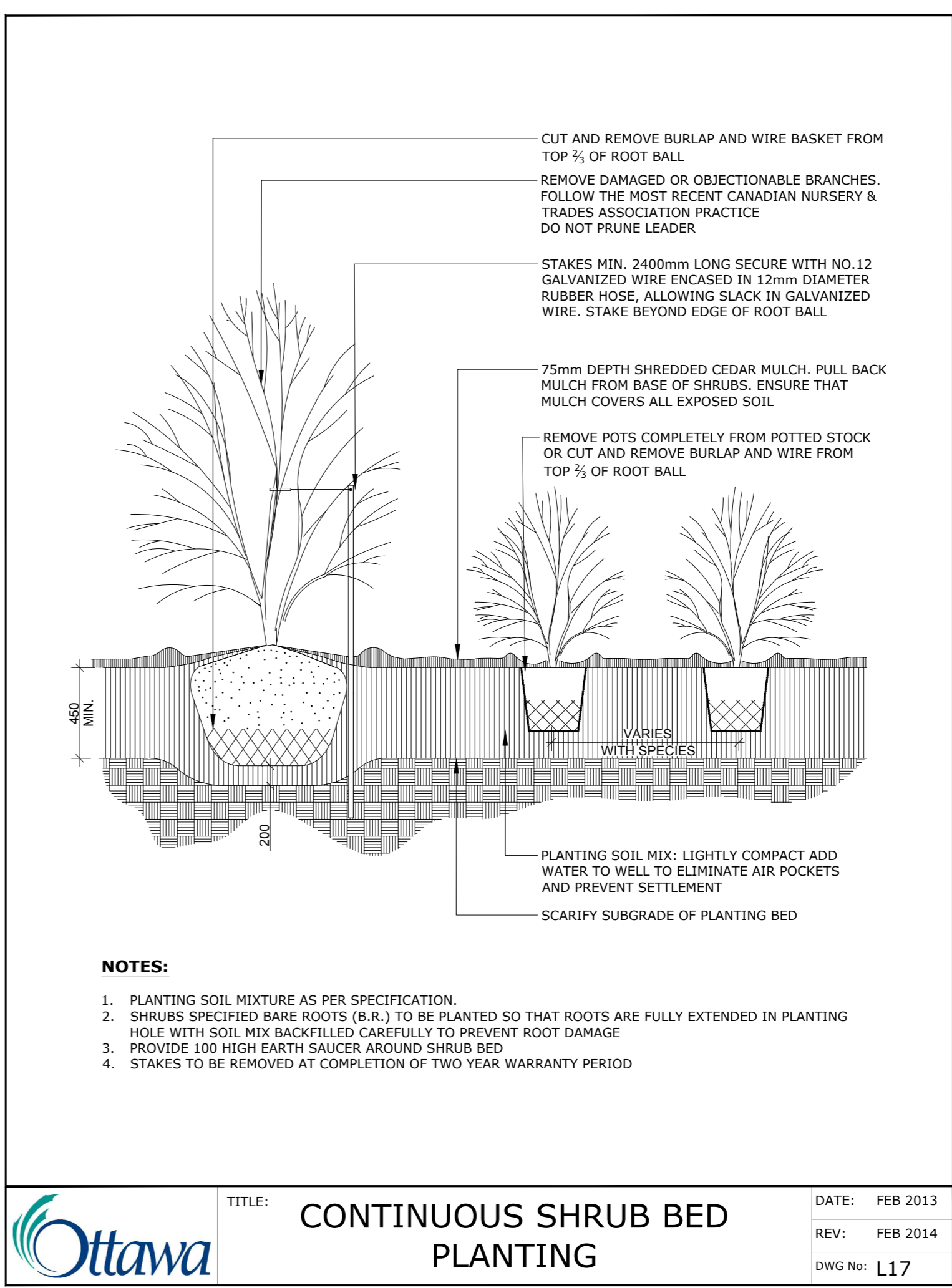


**Ottawa** TITLE: UNIT PAVING - ON GRANULAR BASE DATE: MAY 2001  
 REV: FEB 2016  
 DWG No: SC9

ADDITIONAL NOTES FOR NUMBER 5: PRECAST PAVERS IN PEDESTRIAN AREAS WHERE NORMAL SNOW REMOVALS ARE DONE IS TO RECEIVE A MINIMUM 200mm GRANULAR 'A'. FURTHER ADJUSTMENTS TO BE SPECIFIED IN RELATION TO SITE CONDITIONS AND GEOTECHNICAL RECOMMENDATIONS.



**Ottawa** TITLE: PERENNIAL AND ORNAMENTAL GRASS PLANTING DATE: JAN 2015  
 REV:  
 DWG No: L21



**Ottawa** TITLE: CONTINUOUS SHRUB BED PLANTING DATE: FEB 2013  
 REV: FEB 2014  
 DWG No: L17

6		
5		
4		
3	Issued for Site Plan Application	2023/08/31
2	Issued for Site Plan Application	2023/06/30
1	Issued for Site Plan Application	2022/12/21

NUMBER / MILESTONE / FAT SALLANT / DATE: (Y/M/D) (A/M/J)

ARCHITECT: CONSULTANT

NORTH CONSULTANT

PROJECT / LOCATION

**4-Storey Mixed Use Building**  
 8743169 Canada Ltd  
 2663 Innes Road  
 Ottawa, Ontario

SHEET NAME:

**DETAILS**

DATE:	DESIGNED BY / CONDU PAR	CHECKED BY / VERIFIE PAR
M.R.	A.A. / T.F.	M.R.
PROJECT NO.	DRAWN BY / DESINE PAR	SCALE/ECHELLE
22-1704	T.F.	
	SHEET NO.	
	<b>L-03.</b>	