



**PRECEDENT IMAGE:
STOCK TANK PLANTER**

GALVANIZED STOCK TANKS ARE A DURABLE AND SIMPLE OPTION FOR PLANTER BEDS. THEY REQUIRE NO INSTALLATION AND COME IN VARIOUS SIZES. THEY CAN ALSO OFTEN BE COST-EFFECTIVE WHEN COMPARED TO LESS-DURABLE ALTERNATIVES THAT REQUIRE ASSEMBLY.

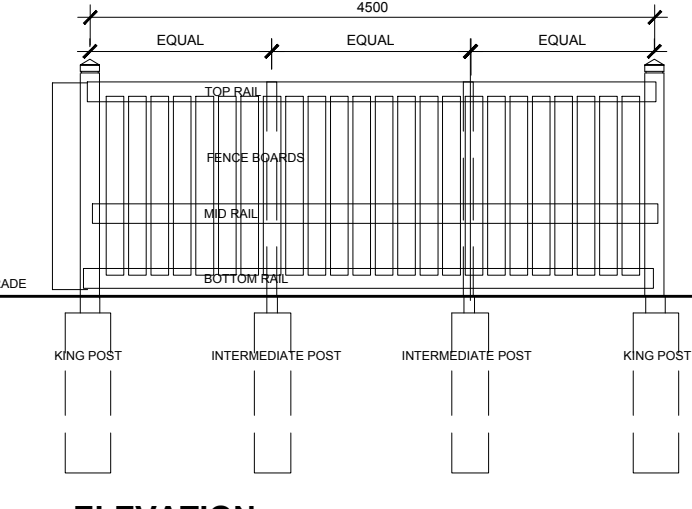
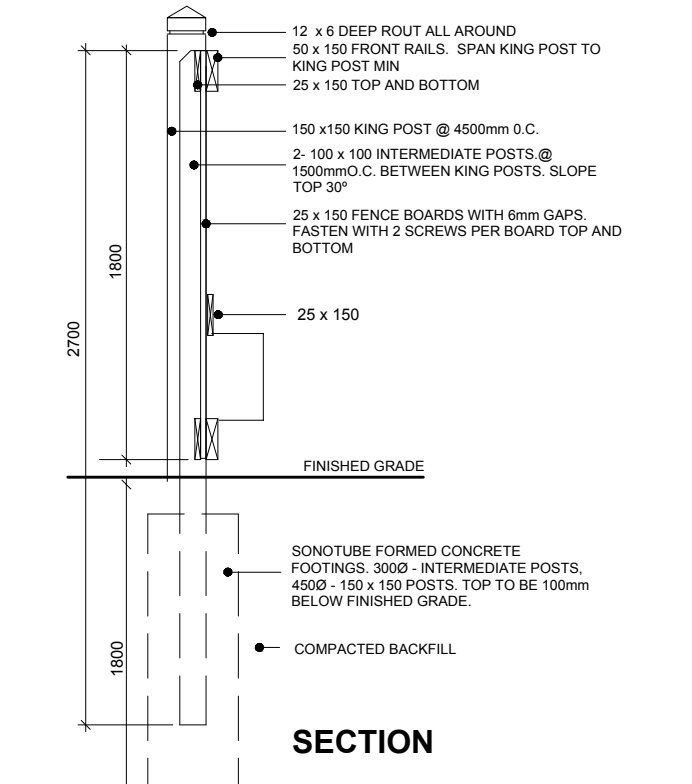
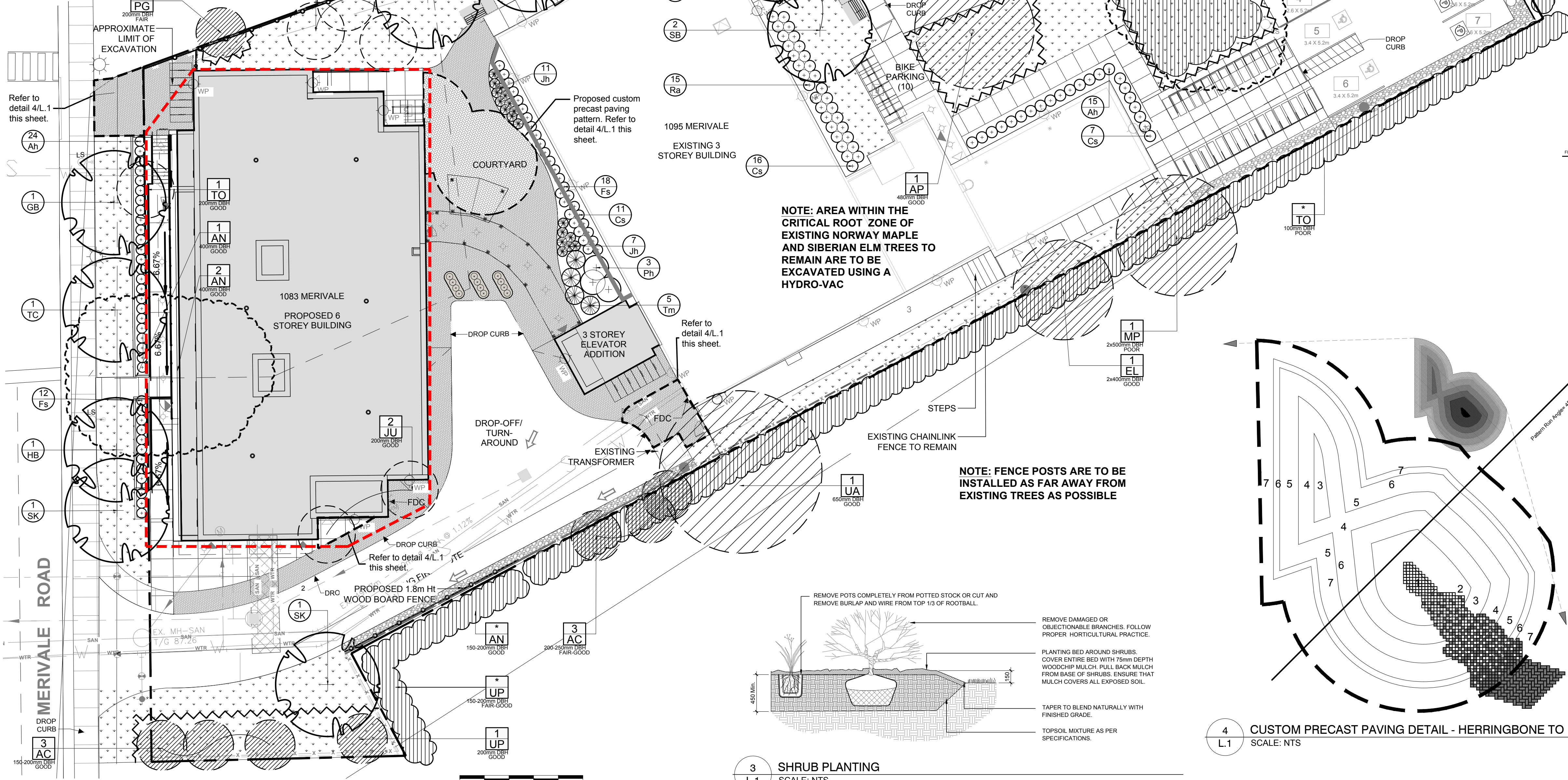
GENERAL NOTES:

- It is the responsibility of the appropriate contractor or official to report any errors, omissions or discrepancies on this plan with actual site conditions to the Landscape Architect before proceeding with construction.
- The contractor is to notify all utility companies and authorities prior to any excavation and ascertain locations of underground services.
- The contractor is to reinstate all areas and items damaged as a result of construction activity.
- The contractor is to comply with all pertinent codes and by-laws.
- The contractor is to maintain a positive surface run-off throughout the entire construction period.
- The Landscape Architect is not responsible for subsurface conditions.
- The contractor is to identify all existing trees to remain on site with the Landscape Architect prior to construction.
- The contractor is to stake the proposed location of all plant material in conjunction with the Landscape Architect prior to excavation.
- Minimum distances for selected deciduous trees are as follows:
 - Building Foundations 7.5m
 - Sidewalks 1.5m
 - Public Streets 2.5m
 - Underground Infrastructure 2.0m
- All trees within 1m of underground utility trenches are to be excavated by hand.
- Remove all protective wrapping from tree trunks after installation.
- Staking of trees shall only be performed if necessary.
- Ensure that mulch is pulled back a min. distance of 75mm from base of tree trunk.

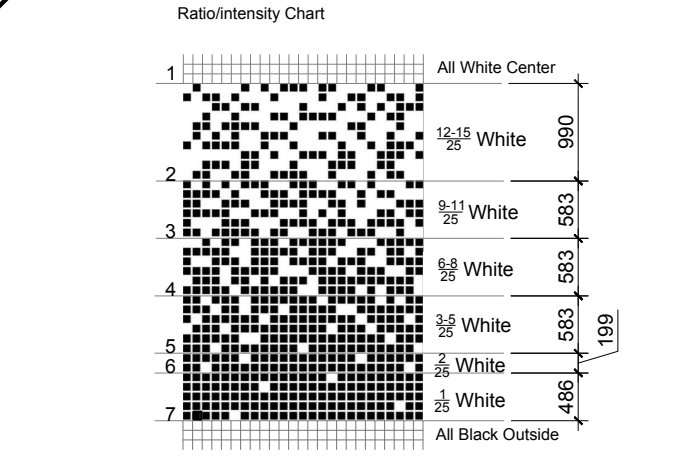
NOTE: AREA WITHIN THE CRITICAL ROOT ZONE OF EXISTING WHITE SPRUCE TREE TO BE EXCAVATED USING A HYDRO-VAC

NOTE: AREA WITHIN THE CRITICAL ROOT ZONE OF EXISTING NORWAY MAPLE AND SIBERIAN ELM TREES TO REMAIN ARE TO BE EXCAVATED USING A HYDRO-VAC

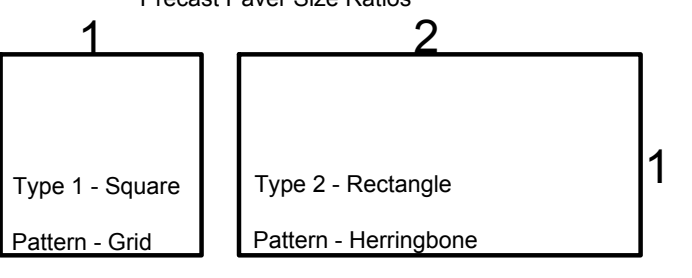
NOTE: FENCE POSTS ARE TO BE INSTALLED AS FAR AWAY FROM EXISTING TREES AS POSSIBLE



5 1.8m Ht WOOD BOARD FENCE
SCALE: NTS



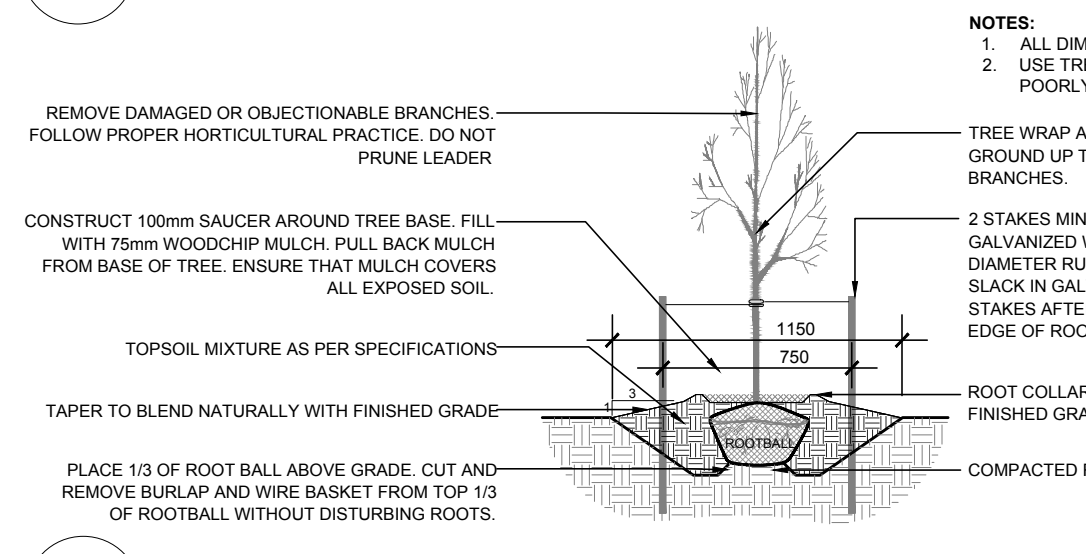
- Notes:
- The faded pattern of this paved area is random. However, it is up to the builder to ensure that the specified ratios of brick type are laid within the correct boundaries to deliver the desired outcome.
 - See manufacturers specification for the exact paver size, color and application.



4 CUSTOM PRECAST PAVING DETAIL - HERRINGBONE TO FADING GRID
SCALE: NTS

3 SHRUB PLANTING
SCALE: NTS

1 TREE CONSERVATION REPORT & LANDSCAPE PLAN
SCALE: 1:200



2 DECIDUOUS TREE PLANTING
SCALE: NTS

TREE INVENTORY AND ASSESSMENT LIST							
KEY	BOTANICAL NAME	COMMON NAME	SIZE	CRITICAL ROOT ZONE	OWNERSHIP	CONDITION	ACTION
3-AC	<i>Acer negundo</i>	Manitoba Maple	200-250mm DBH	2000-2500mm	1083 Merivale Ave	FAIR-GOOD	TO REMAIN
*-AN	<i>Acer negundo</i>	Manitoba Maple	150-500mm DBH	1500-5000mm	Numerous	FAIR-GOOD	SEE PLAN
1-AP	<i>Acer platanoides</i>	Norway Maple	480mm DBH	4800mm	1083 Merivale Ave	GOOD	TO REMAIN
1-EL	<i>Ulmus americana</i>	American Elm	2x400mm DBH	4000mm	1335 Dorchester	GOOD	SEE PLAN
2-JU	<i>Juniperus spp.</i>	Juniper	200mm DBH	2000mm	1083 Merivale Ave	GOOD	TO BE REMOVED
*-MA	<i>Malus spp.</i>	Crabapple	150-200mm DBH	1500-2000mm	1083 Merivale Ave	FAIR-GOOD	SEE PLAN
1-MP	<i>Acer negundo</i>	Manitoba Maple	500mm DBH	5000mm	1335 Dorchester	FAIR-GOOD	SEE PLAN
1-PG	<i>Picea glauca</i>	White Spruce	200mm DBH	2000mm	1077 Merivale Ave	FAIR	TO REMAIN
*-SE	<i>Ulmus pumila</i>	Siberian Elm	100-150mm DBH	1000-1500mm	1314 Emperor	GOOD	TO REMAIN
*-TO	<i>Thuja occidentalis</i>	White Cedar	100-200mm DBH	1000-2000mm	Numerous	POOR-GOOD	TO REMAIN
*-UA	<i>Ulmus americana</i>	American Elm	100-650mm DBH	1000-6500mm	1343 Dorchester	GOOD	SEE PLAN
*-UP	<i>Ulmus pumila</i>	Siberian Elm	300-350mm DBH	3000-3500mm	1083 Merivale Ave	FAIR-GOOD	SEE PLAN

PROPOSED PLANT LIST							
KEY	QTY	BOTANICAL NAME	COMMON NAME	SIZE	CONDITION	REMARKS	
DECIDUOUS TREES							
FM	2	<i>Acer x freemanii</i>	Freeman's Maple	60mm cal.	B&B		
HB	1	<i>Celtis occidentalis</i>	Hackberry	60mm cal.	B&B		
GB	1	<i>Ginkgo biloba 'Princeton Sentry'</i>	Princeton Sentry Ginkgo	60mm cal.	B&B	Male tree	
SB	2	<i>Amelanchier canadensis</i>	Serviceberry	60mm cal.	B&B	Single leader	
SK	2	<i>Gleditsia triacanthos var. inermis 'Draves'</i>	Street Keeper Honeylocust	60mm cal.	B&B		
TC	2	<i>Tilia cordata</i>	Littleleaf Linden	60mm cal.	B&B		
SHRUBS							
Ah	39	<i>Hydrangea arborescens 'Annabelle'</i>	Annabelle Hydrangea	3 gal pot	Potted	Space 800mm o.c.	
Cs	34	<i>Cornus sericea 'Farrow' Arctic Fire</i>	Red Twig Dogwood	600mm ht	Potted	Space 800mm o.c.	
Fs	29	<i>Sorbaria sorbifolia 'Sem'</i>	Siam False Spirea	600mm ht	Potted	Space 800mm o.c.	
Jh	18	<i>Juniperus horizontalis 'Bar Harbor'</i>	Bar Harbor Juniper	600mm spr	Potted	Space 800mm o.c.	
Rh	3	<i>Hydrangea paniculata 'Peegee'</i>	Peegee Hydrangea	1200mm ht	Potted	Space 2000mm o.c.	
Ra	30	<i>Ribes alpinum</i>	Alpine Currant	600mm ht	Potted	Space 800mm o.c.	
Tm	5	<i>Taxus media 'Hicksii'</i>	Hick's Yew	1000mm ht	Potted	Space 1500mm o.c.	

CLIENT
Shepherds of Good
Hope
OTTAWA
ONTARIO, CANADA

CONSULTANTS
ARCHITECTS
CSV ARCHITECTS
sustainable design - conception écologique
613.564.8118
www.csv.ca
190 O'Connor Street, Suite 100
Ottawa, Ontario, K2P 2R3

SURVEYORS
ANNIS, O'SULLIVAN, VOLLEBECK LTD.
14 Concourse Gate, Suite 500
Nepean, Ont. K2E 7S6
Phone: (613) 727-0650 / Fax: (613) 727-1079
Email: Nepean@annisov.com

- LEGEND**
- EXISTING TREE TO REMAIN
 - GROUP OF EXISTING TREES TO REMAIN
 - EXISTING TREE TO BE REMOVED
 - GROUP OF EXISTING TREES TO BE REMOVED
 - PROPOSED DECIDUOUS TREE
 - PROPOSED SHRUBS
 - PROPOSED SODDED GRASS AREA
 - PROPOSED PRECAST TYPE 1 CONCRETE PAVERS
 - PROPOSED PRECAST TYPE 2 CONCRETE PAVERS
 - PROPOSED RIVERSTONE MULCH
 - PROPOSED STONEDUST
 - PROPOSED STOCK TANK PLANTER
 - PROPOSED TREE PROTECTION FENCING
 - PROPOSED 1.8m Ht WOOD BOARD FENCE
 - PROPOSED BENCH
 - APPROXIMATE LIMIT OF EXCAVATION

No.	Issue	Date	By	DR	CK
7	REISSUED FOR SITE PLAN CONTROL	10/26/2023	ML	JL	
6	ISSUED FOR SITE PLAN CONTROL	06/02/2023	ML	JL	
5	ISSUED FOR DISCUSSION AND REVIEW	03/16/2023	CM	JL	
4	ISSUED FOR DISCUSSION AND REVIEW	03/15/2023	ML	JL	
3	ISSUED FOR DISCUSSION AND REVIEW	01/04/2023	ML	JL	
2	ISSUED FOR DISCUSSION AND REVIEW	12/09/2022	ML	JL	
1	ISSUED FOR DISCUSSION AND REVIEW	11/30/2022	ML	JL	

JAMES B. LENNOX & ASSOCIATES INC.
LANDSCAPE ARCHITECTS
3332 CARLING AVE. OTTAWA, ONTARIO K2H 5A8
Tel. (613) 722-5168 Fax. (1866) 343-3942

PROJECT
SGH 1083 MERIVALE
1083 MERIVALE ROAD, OTTAWA ON K1Z 6A9

DRAWING
TREE CONSERVATION REPORT & LANDSCAPE PLAN

STAMP

SCALE
AS SHOWN

START DATE
NOVEMBER 2022

PROJECT NO.

DRAWING NO.
L.1

PLOT SIZE ARCH-D

D07-12-23-0078