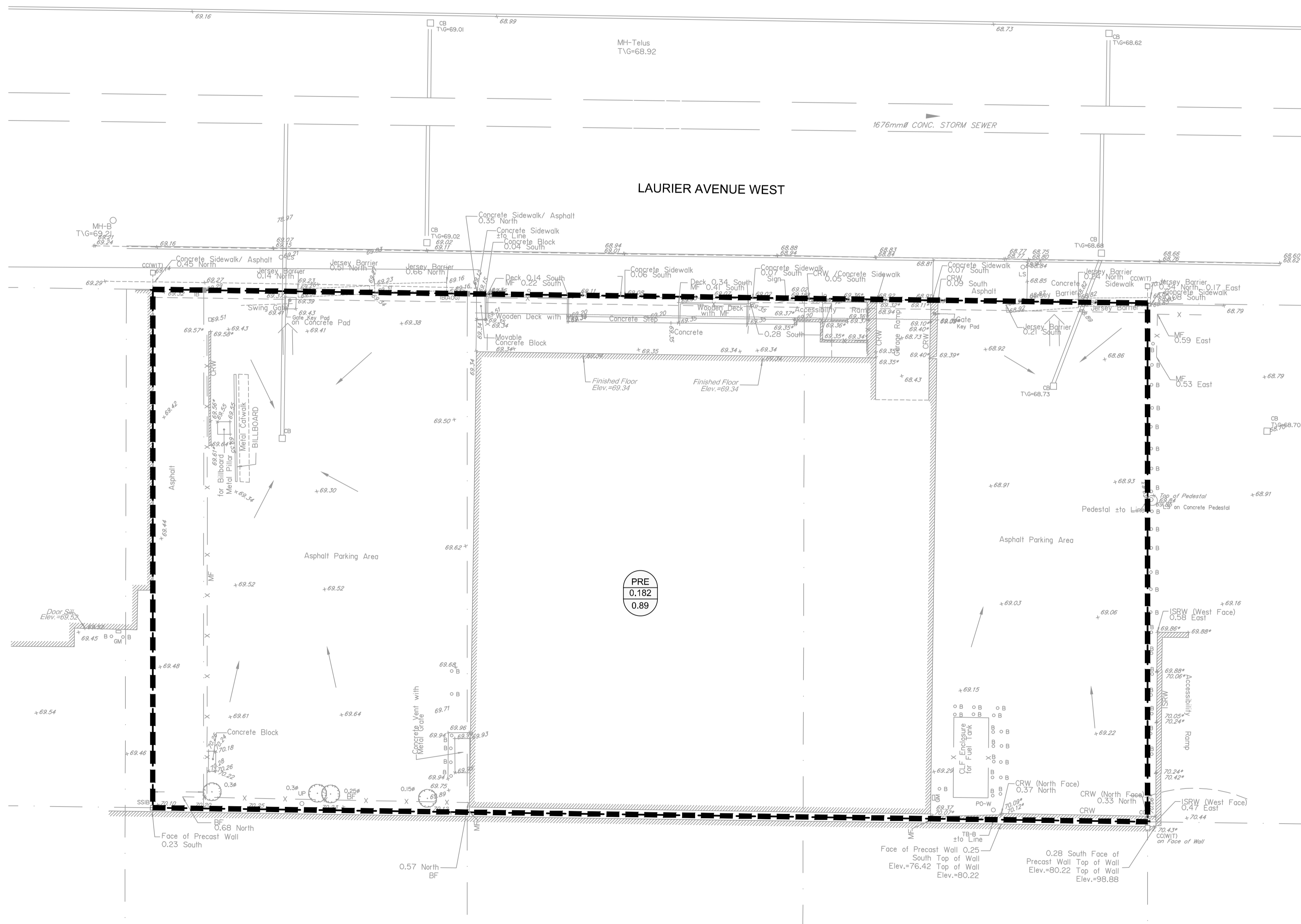


**GENERAL NOTES:**

- COORDINATE AND SCHEDULE ALL WORK WITH OTHER TRADES AND CONTRACTORS.
- DETERMINE THE EXACT LOCATION, SIZE, MATERIAL AND ELEVATION OF ALL EXISTING UTILITIES PRIOR TO COMMENCING CONSTRUCTION. PROTECT AND ASSUME RESPONSIBILITY FOR ALL EXISTING UTILITIES WHETHER OR NOT SHOWN ON THIS DRAWING.
- ALL ELEVATIONS ARE GEODETIC.
- REFER TO GEOTECHNICAL INVESTIGATION REPORT (PG65195-1, REVISION 2, DATED SEPTEMBER 7, 2023), PREPARED BY PATERSON GROUP INC., FOR SUBSURFACE CONDITIONS, CONSTRUCTION RECOMMENDATIONS, AND GEOTECHNICAL INSPECTION REQUIREMENTS. THE GEOTECHNICAL CONSULTANT IS TO REVIEW ON-SITE CONDITIONS AFTER EXCAVATION PRIOR TO PLACEMENT OF THE GRANULAR MATERIAL.
- REFER TO THE DEVELOPMENT SERVICING STUDY AND STORMWATER MANAGEMENT REPORT (R-2022-124) PREPARED BY NOVATECH.

**LEGEND**

- DRAINAGE AREA LIMITS
- PRE-DEVELOPMENT AREA ID
- PRE-DEVELOPMENT DRAINAGE AREA (ha)
- 1.5 YEAR WEIGHTED RUNOFF COEFFICIENT
- EXISTING CONCRETE CURB
- EXISTING VALVE & VALVE BOX
- EXISTING SERVICE POST
- EXISTING HYDRANT
- EXISTING CATCHBASIN
- EXISTING CATCHBASIN MH
- EXISTING UTILITY POLE
- CW GUY WIRES
- EXISTING DRAINAGE DIRECTION ARROWS
- EXISTING OVERLAND FLOW



**NOTE:**  
THE POSITION OF ALL POLE LINES, CONDUITS, WATERMANS, SEWERS AND OTHER UNDERGROUND AND OVERGROUND UTILITIES AND STRUCTURES IS NOT NECESSARILY SHOWN ON THE CONTRACT DRAWINGS, AND WHERE SHOWN, THE ACCURACY OF THE POSITION OF SUCH UTILITIES AND STRUCTURES IS NOT GUARANTEED. BEFORE STARTING WORK, DETERMINE THE EXACT LOCATION OF ALL SUCH UTILITIES AND STRUCTURES AND ASSUME ALL LIABILITY FOR DAMAGE TO THEM.

**OWNER INFORMATION**  
JADCO Group  
345 Boulevard Samson  
Laval, QC H7X 2Z7  
  
CONTACT: ANDRÉ DOUDAK  
Tel: (613) 791-1970  
EMAIL: adoudak@jadcogroup.com

No.	REVISION	DATE	BY
3.	RE-ISSUED FOR CITY APPROVAL	OCT 20/23	FST
2.	REVISED AS PER CITY COMMENTS	JUN 5/23	FST
1.	ISSUED FOR SPC APPLICATION	AUG 30/22	FST

**SCALE**  
1:150

**DESIGN**  
CV  
CHECKED  
FST  
DRAWN  
CV  
CHECKED  
FST  
APPROVED  
FST

**FOR REVIEW ONLY**

**NOVATECH**  
Engineers, Planners & Landscape Architects  
Suite 200, 240 Michael Cowpland Drive  
Ottawa, Ontario, Canada K2M 1P6  
Telephone (613) 254-9643  
Facsimile (613) 254-5867  
Website www.novatech-eng.com

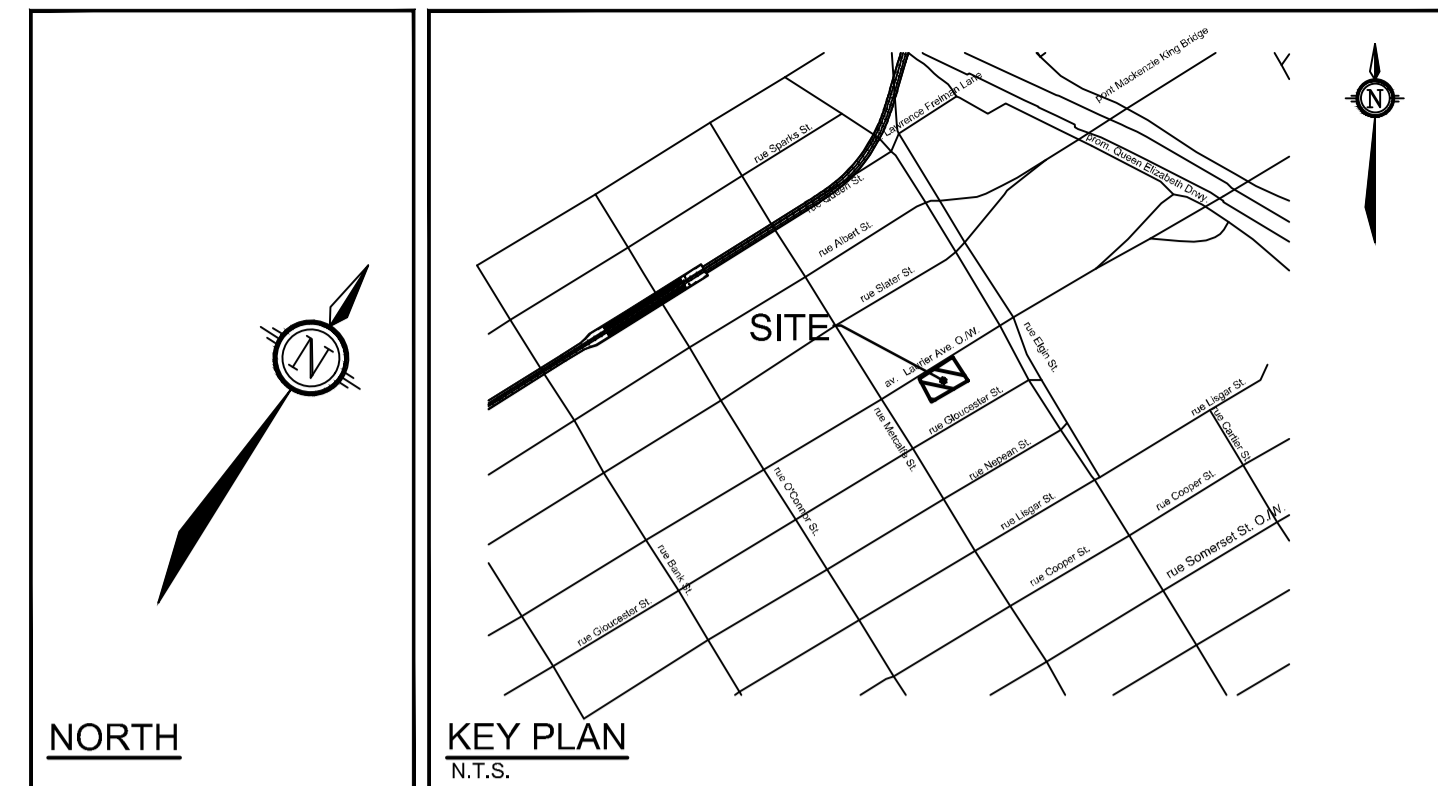
**LOCATION**  
CITY OF OTTAWA  
150 LAURIER AVENUE WEST

**DRAWING NAME**  
PRE-DEVELOPMENT  
STORM DRAINAGE PLAN

**PROJECT No.** 122133  
**REV** REV # 3  
**DRAWING No.** 122133-SWM1  
**PLAN #** 18833

M:\2023\122133\CAD\Civil\122133-SWM.dwg, SWM1, Oct 19, 2023, 8:30am, chesler

D07-12-22-0128



**GENERAL NOTES:**

- COORDINATE AND SCHEDULE ALL WORK WITH OTHER TRADES AND CONTRACTORS.
- DETERMINE THE EXACT LOCATION, SIZE, MATERIAL AND ELEVATION OF ALL EXISTING UTILITIES PRIOR TO COMMENCING CONSTRUCTION. PROTECT AND ASSUME RESPONSIBILITY FOR ALL EXISTING UTILITIES WHETHER OR NOT SHOWN ON THIS DRAWING.
- ALL ELEVATIONS ARE GEODETIC.
- REFER TO GEOTECHNICAL INVESTIGATION REPORT (PG65195-1, REVISION 2, DATED SEPTEMBER 7, 2023), PREPARED BY PATERSON GROUP INC., FOR SUBSURFACE CONDITIONS, CONSTRUCTION RECOMMENDATIONS, AND GEOTECHNICAL INSPECTION REQUIREMENTS. THE GEOTECHNICAL CONSULTANT IS TO REVIEW ON-SITE CONDITIONS AFTER EXCAVATION PRIOR TO PLACEMENT OF THE GRANULAR MATERIAL.
- REFER TO THE DEVELOPMENT SERVICING STUDY AND STORMWATER MANAGEMENT REPORT (R-2022-124) PREPARED BY NOVATECH.

**LEGEND**

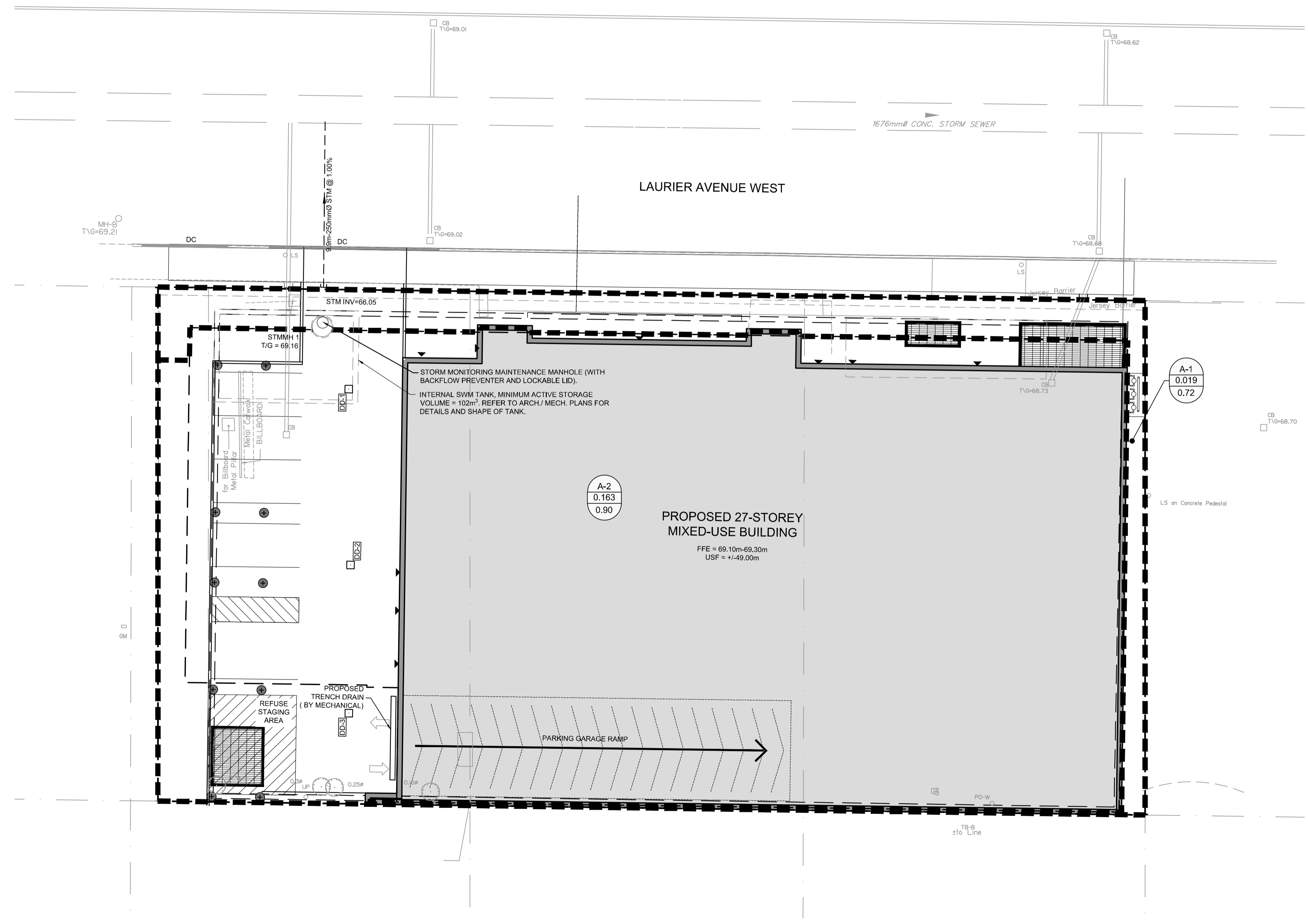
- PROPOSED BARRIER CURB
- PROPOSED DEPRESSED CURB
- DRAINAGE AREA LIMITS
- POST-DEVELOPMENT AREA ID
- POST-DEVELOPMENT DRAINAGE AREA (ha)
- 1.5 YEAR WEIGHTED RUNOFF COEFFICIENT
- EXISTING CONCRETE CURB
- EXISTING VALVE & VALVE BOX
- EXISTING SERVICE POST
- EXISTING HYDRANT
- EXISTING CATCHBASIN
- EXISTING CATCHBASIN MH
- EXISTING UTILITY POLE
- CW GUY WIRES

INTERNAL SWM STORAGE SYSTEM					
DESIGN EVENT	STORAGE SYSTEM CONTROLLED FLOW	STORAGE VOLUMES		PROVIDED	
		REQUIRED	REQUIRED		
1:2 YR	PUMPED FLOW RATE = 3.78 L/s	23.1 m <sup>3</sup>			
1:5 YR		34.8 m <sup>3</sup>		>102 m <sup>3</sup>	
1:100 YR		80.2 m <sup>3</sup>			
1:100+20%		101.6 m <sup>3</sup>			

**NOTES:**

- ALL DRAINAGE FROM AREA R-1 (PROPOSED AMENITY AREA DECK DRAINS AND ALL ROOF DRAINS) TO BE DIRECTED TO THE INTERNAL STORMWATER STORAGE SYSTEM. REFER TO ARCHITECTURAL AND MECHANICAL PLANS FOR DETAILS.
- REFER TO ARCHITECTURAL AND STRUCTURAL PLANS FOR EXACT SIZE AND DETAILS OF INTERNAL STORMWATER STORAGE SYSTEM.
- REFER TO ARCHITECTURAL AND MECHANICAL PLANS FOR LOCATION AND CONNECTIONS AND DETAILS OF THE INTERNAL STORMWATER STORAGE SYSTEM AND EMERGENCY OVERFLOW PIPING.

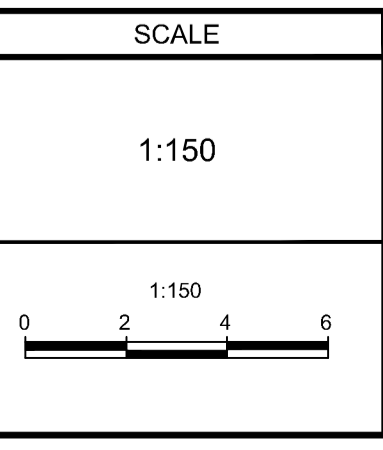
Design Event	Pre-Development Conditions		Post-Development Conditions			
	Uncontrolled Flow (L/s)	Allowable Release Rate (L/s)	A-1 Flow (L/s)	A-2 Flow (L/s)	Total Flow (L/s)	Reduction in Flow (L/s or %)
2-Yr	34.5	19.4	2.9	3.8	6.7	27.8 or 81%
5-Yr	46.8		4.0	3.8	7.8	39.0 or 83%
100-Yr	89.2		9.3	3.8	13.1	76.1 or 85%



**NOTE:**  
THE POSITION OF ALL POLE LINES, CONDUITS, WATERMANS, SEWERS AND OTHER UNDERGROUND AND OVERGROUND UTILITIES AND STRUCTURES IS NOT NECESSARILY SHOWN ON THE CONTRACT DRAWINGS, AND WHERE SHOWN, THE ACCURACY OF THE POSITION OF SUCH UTILITIES AND STRUCTURES IS NOT GUARANTEED. BEFORE STARTING WORK, DETERMINE THE EXACT LOCATION OF ALL SUCH UTILITIES AND STRUCTURES AND ASSUME ALL LIABILITY FOR DAMAGE TO THEM.

**OWNER INFORMATION**  
JADCO Group  
345 Boulevard Samson  
Laval, QC H7X 2Z7  
  
CONTACT: ANDRÉ DOUDAK  
Tel: (613) 791-1970  
EMAIL: adoudak@jadcogroup.com

No.	REVISION	DATE	BY
3.	RE-ISSUED FOR CITY APPROVAL	OCT 20/23	FST
2.	REVISED AS PER CITY COMMENTS	JUN 5/23	FST
1.	ISSUED FOR SPC APPLICATION	AUG 30/22	FST



DESIGN	CV
CHECKED	FST
DRAWN	CV
CHECKED	FST
APPROVED	FST

**FOR REVIEW ONLY**

**NOVATECH**  
Engineers, Planners & Landscape Architects  
Suite 200, 240 Michael Cowpland Drive  
Ottawa, Ontario, Canada K2M 1P6  
  
Telephone: (613) 254-9643  
Facsimile: (613) 254-5867  
Website: www.novatech-eng.com

LOCATION  
CITY OF OTTAWA  
150 LAURIER AVENUE WEST

DRAWING NAME  
**POST-DEVELOPMENT STORMWATER MANAGEMENT PLAN**

PROJECT No. 122133  
REV # 3  
DRAWING No. 122133-SWM2  
PLAN #18833

M:\2023\122133\CAD\CAD\122133-SWM.dwg, SWM2, Oct 20, 2023, 2:45pm, chesley

D07-12-22-0128