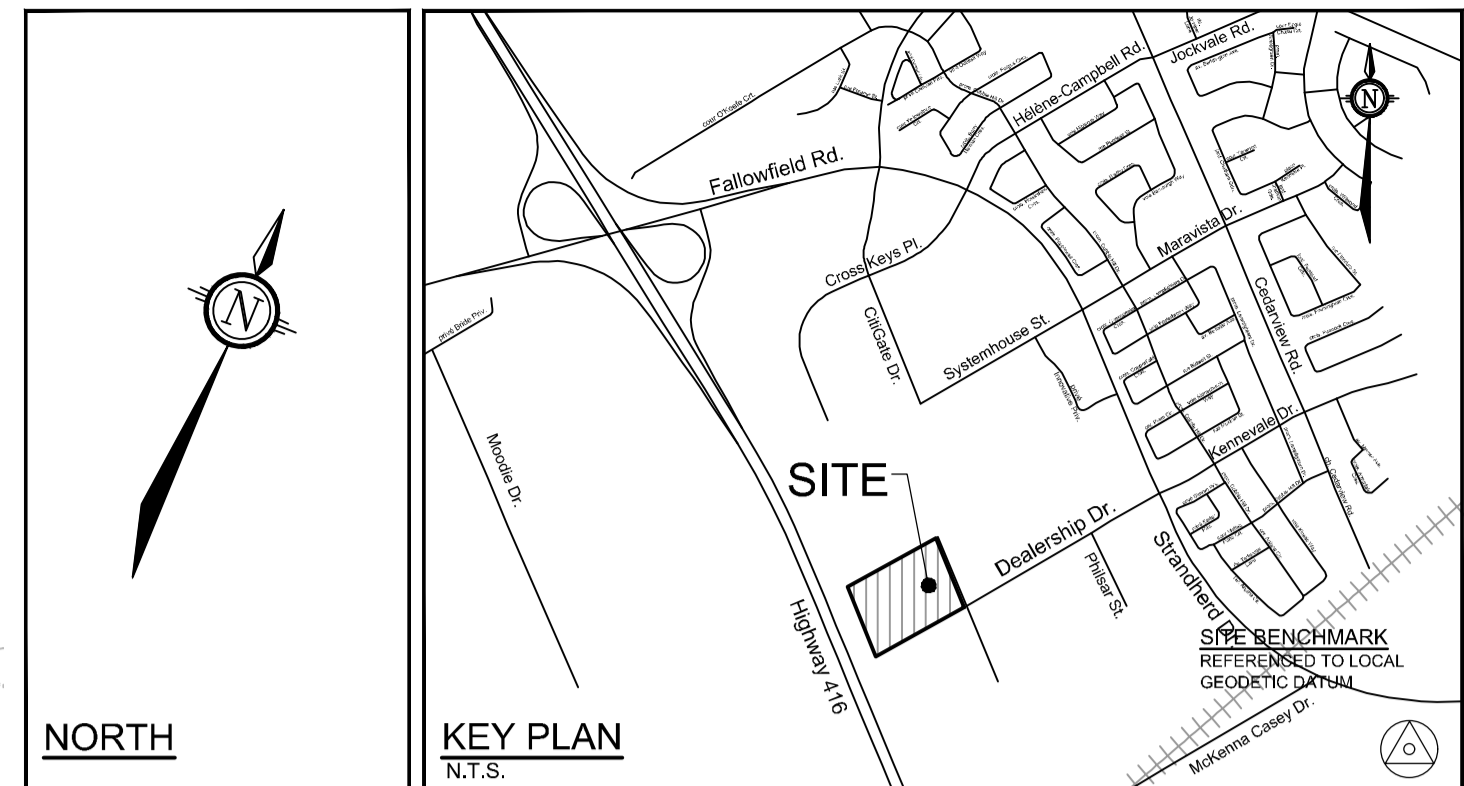


**CITY DETAILS**  
 Related details from City of Ottawa Standard Tender Documents  
 Volume No. 2 Standard Detail Drawings.  
 F7. Tree Preservation Protection Fence



**LEGEND**

- PROPERTY LIMIT
- PROPOSED CONCRETE
- PROPOSED DECIDUOUS TREE
- PROPOSED SHRUBS
- PROPOSED SHRUB REFORESTATION
- SPECIES (SEE PLANT LIST)
- QUANTITY
- RETAINING WALL - REFER TO CIVIL DRAWINGS
- EXISTING TREES TO BE PRESERVED
- EXISTING TREES TO BE REMOVED
- TREE PROTECTION FENCE
- TCR - GROUP A
- TCR - GROUP B
- TCR - GROUP C
- TCR - GROUP D

**GENERAL**

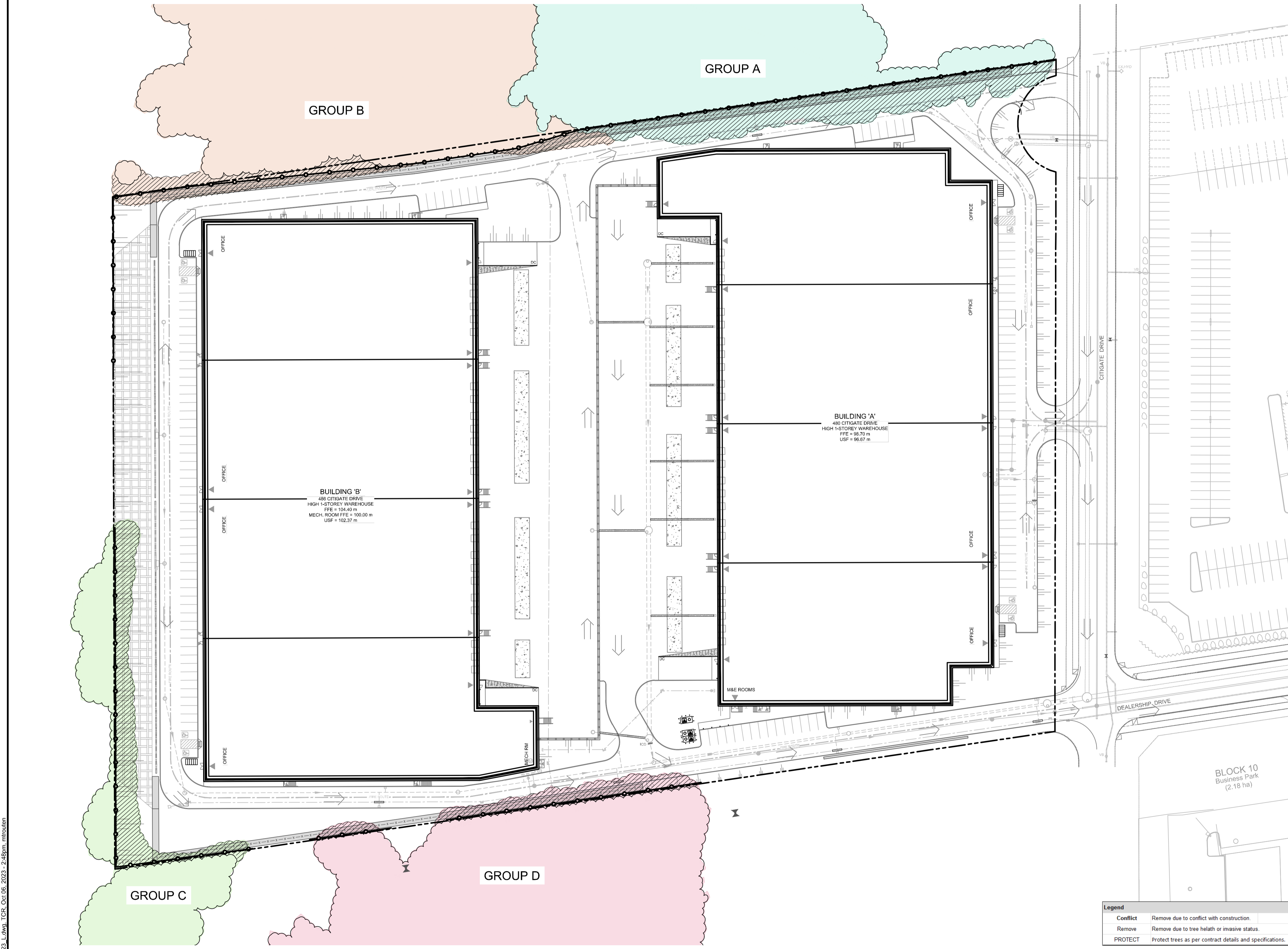
1. Read and interpret this drawing/ drawing set in conjunction with all the contract details and specifications, including related civil, utility, structural, architectural, mechanical, electrical, environmental, geotechnical, and survey information.
2. The Contractor is to determine the exact location, size, material, and elevation of all existing utilities prior to commencing construction. Protect and assume responsibility for all existing utilities regardless of being shown on the drawings.
3. It is essential to use the plans and details in conjunction with the specifications and notes.
4. Do not scale drawings. Work to dimensions only.
5. Protect all existing and retained vegetation for the duration of construction according to the contract details and specifications.
6. Reinstate all areas and items damaged or disturbed, beyond the Limit of Work, because of construction activities, including but not limited to construction staging areas, haul roads, stockpile areas, etc. to the satisfaction of the Consultant. Unless otherwise noted, Contractor is to reinstate all areas to pre-construction condition or better to the satisfaction of the Contract Administrator.

**EXISTING TREE INVENTORY - GROUPS**

Key	Botanical Name	Common Name	% Compos	DBH Min-Max	DBH Avg	Owner	Recomm.
<b>Group A</b>							
A	<i>Thuja occidentalis</i>	White Cedar	75%	5-20cm	15cm	Shared	Conflict / PROTECT
A	<i>Acer saccharum</i>	Sugar Maple	5%	5-10cm	8cm	Shared	Conflict / PROTECT
A	<i>Picea glauca</i>	White Spruce	5%	5-10cm	5cm	Shared	Conflict / PROTECT
A	<i>Populus tremuloides</i>	Trembling Aspen	5%	5-10cm	7cm	Shared	Conflict / PROTECT
A	<i>Tilia americana</i>	Basswood	5%	15-20cm	17cm	Shared	Conflict / PROTECT
A	<i>Ulmus americana</i>	White Elm	5%	15-20cm	17cm	Shared	Conflict / PROTECT
a	<i>Prunus serotina</i>	Black Cherry	/	2-5cm	4cm	Shared	Conflict / PROTECT
a	<i>Rhamnus sp.</i>	Buckthorn	/	2-5cm	3cm	Shared	Conflict / PROTECT
<b>Group B</b>							
B	<i>Acer negundo</i>	Manitoba Maple	50%	5-10cm	7cm	Shared	Conflict / PROTECT
B	<i>Ulmus americana</i>	White Elm	40%	15-20cm	18cm	Shared	Conflict / PROTECT
b	<i>Rhus typhina</i>	Staghorn Sumac	10%	3-6cm	4cm	Shared	Conflict / PROTECT
<b>Group C</b>							
C	<i>Pinus sylvestris</i>	Scots Pine	50%	15-25cm	22cm	Shared	Conflict / PROTECT
C	<i>Picea glauca</i>	White Spruce	20%	10-15cm	13cm	Shared	Conflict / PROTECT
C	<i>Ulmus americana</i>	White Elm	30%	10-20cm	14cm	Shared	Conflict / PROTECT
<b>Group D</b>							
D	<i>Acer negundo</i>	Manitoba Maple	40%	5-15cm	9cm	Shared	Conflict / PROTECT
D	<i>Ulmus americana</i>	White Elm	30%	5-15cm	13cm	Shared	Conflict / PROTECT
D	<i>Populus tremuloides</i>	Trembling Aspen	20%	5-20cm	16cm	Shared	Conflict / PROTECT
D	<i>Picea glauca</i>	White Spruce	10%	5-15cm	12cm	Shared	Conflict / PROTECT

**Legend**

Conflict	Remove due to conflict with construction.
Remove	Remove due to tree health or invasive status.
PROTECT	Protect trees as per contract details and specifications.



**NOTE:**  
 THE POSITION OF ALL POLE LINES, CONDUITS, WATERMANS, SEWERS AND OTHER UNDERGROUND AND OVERGROUND UTILITIES AND STRUCTURES IS NOT NECESSARILY SHOWN ON THE CONTRACT DRAWINGS, AND WHERE SHOWN, THE ACCURACY OF THE POSITION OF SUCH UTILITIES AND STRUCTURES IS NOT GUARANTEED, BEFORE STARTING WORK, DETERMINE THE EXACT LOCATION OF ALL SUCH UTILITIES AND STRUCTURES AND ASSUME ALL LIABILITY FOR DAMAGE TO THEM.

**NOT FOR CONSTRUCTION**

No.	REVISION	DATE	BY
1.	REVISED PER CITY COMMENTS	OCT 6/23	RGJ

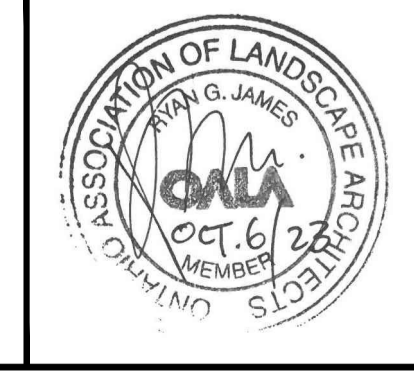
**SCALE**

1:750

0 10 20 30

**FOR REVIEW ONLY**

DESIGN	MJT
CHECKED	RGJ
DRAWN	MJT
CHECKED	RGJ
APPROVED	MJT



**NOVATECH**  
 Engineers, Planners & Landscape Architects  
 Suite 200, 240 Michael Cowpland Drive  
 Ottawa, Ontario, Canada K2M 1P6  
 Telephone (613) 254-9643  
 Facsimile (613) 254-5867  
 Website www.novatech-eng.com

**LOCATION**  
 CITY OF OTTAWA  
 575 DEALERSHIP DRIVE

**DRAWING NAME**  
 TREE CONSERVATION PLAN

PROJECT NO.	119123-00
REV	REV # 1
DRAWING NO.	119123-TCR

M:\2019\119123\CAD\Landscaping\Plan\119123\_L.dwg, TCR, Oct 06, 2023, 2:48pm, mtrouen