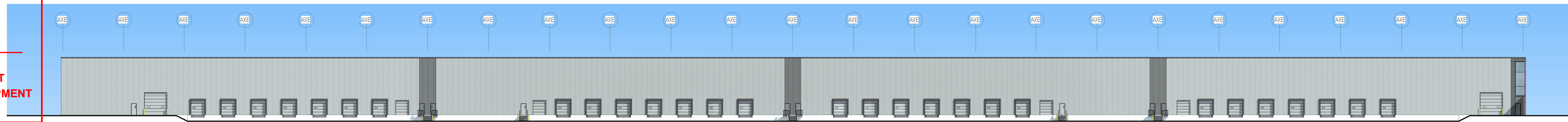
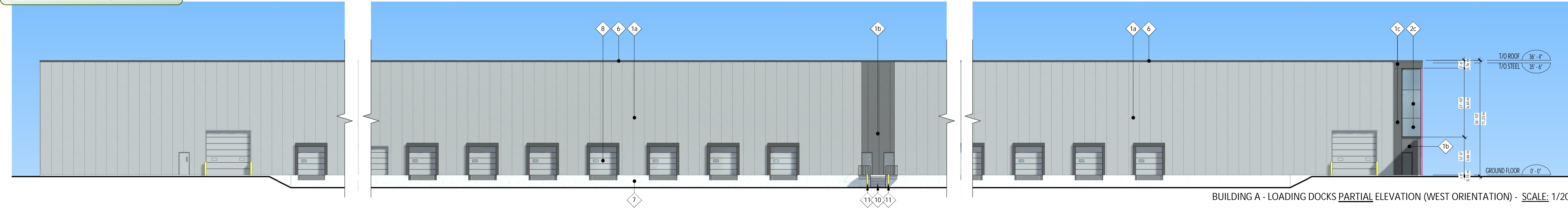


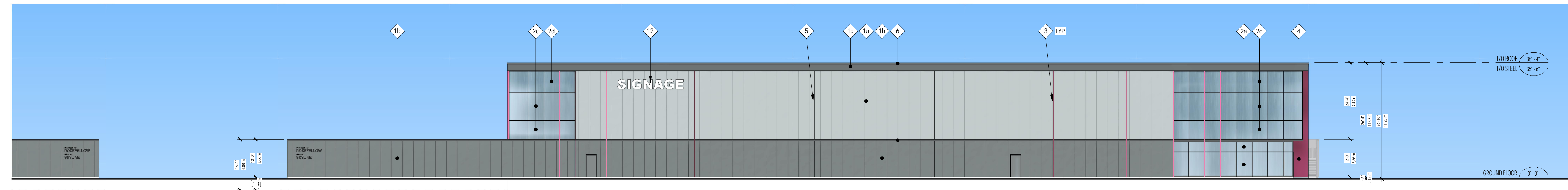
APPROVED
By Allison Hamlin at 2:59 pm, Oct 13, 2023



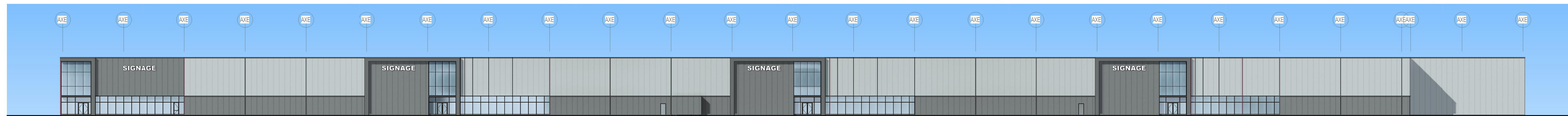
BUILDING A - LOADING DOCKS ELEVATION (WEST ORIENTATION) - SCALE: 1/500



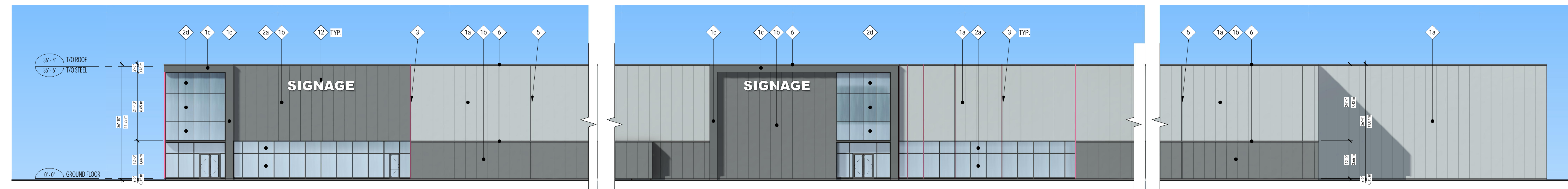
BUILDING A - LOADING DOCKS PARTIAL ELEVATION (WEST ORIENTATION) - SCALE: 1/200



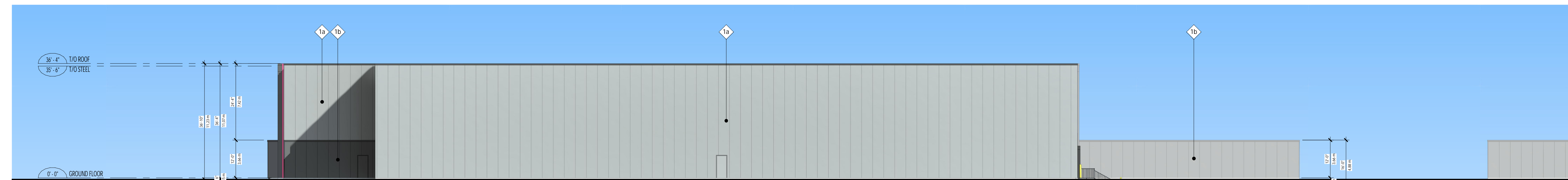
BUILDING A - CAMPEAU DRIVE ELEVATION (SOUTH ORIENTATION) - SCALE: 1/200



BUILDING A - HUNTMAR DRIVE ELEVATION (EAST ORIENTATION) - SCALE: 1/500



BUILDING A - HUNTMAR DRIVE PARTIAL ELEVATION (EAST ORIENTATION) - SCALE: 1/200



BUILDING A - REAR ELEVATION (NORTH ORIENTATION) - SCALE: 1/200

ELEVATIONS LEGEND (EXTERIOR FINISHES):

- 1a) VERTICAL INSULATED METAL PANEL (IMP V), 42" WIDE, 3" THICK, MICRO-RIB FINISH, COLOR: DOVE GRAY (REF. KINGSPAN)
- 1b) VERTICAL INSULATED METAL PANEL (IMP V), 42" WIDE, 3" THICK, MICRO-RIB FINISH, COLOR: ZINC GRAY (REF. KINGSPAN)
- 1c) INSULATED METAL PANEL, 30" WIDE, 3" THICK, SMOOTH FINISH, COLOR: ZINC GRAY (REF. KINGSPAN)

ALL GLASS SURFACES, WILL HAVE BIRD FRIENDLY, HIGH CONTRAST PATTERN PRINTED ON GLASS SURFACE #1 (CERAMIC FRIT). THE PATTERN WILL BE CONSISTING OF 4MM DIAMETER CIRCLES, WHICH ARE 50MM APART FROM EACH OTHER

- 2a) CLEAR THERMO GLASS, INT: CLEAR ANODISED ALUMINUM CURTAIN WALL, EXT: VERTICAL AND HORIZONTAL STANDARD CAP (3/4" DEPTH), COLOR: CHARCOAL
- 2b) SPANDREL THERMO GLASS, INT: CLEAR ANODISED ALUMINUM CURTAIN WALL, EXT: VERTICAL AND HORIZONTAL STANDARD CAP (3/4" DEPTH), COLOR: CHARCOAL
- 2c) CLEAR THERMO GLASS, INT: CLEAR ANODISED ALUMINUM CURTAIN WALL, EXT: BLACK SILICON SEALS IN ALL DIRECTIONS, REFLECTION GREATER THAN 2s
- 2d) SPANDREL THERMO GLASS, INT: CLEAR ANODISED ALUMINUM CURTAIN WALL, EXT: BLACK SILICON SEALS IN ALL DIRECTIONS, REFLECTION GREATER THAN 2s

- 3) ALUMINIUM VERTICAL MOLDING - MULLION CAP 2 1/2" WIDE AND 6" DEEP, COLOR: PINK (PANTONE #1915 C)
- 4) 1/8" THICK ALUMINIUM PANEL, CONCEALED BRACKETS, COLOR: PINK (PANTONE #1915 C)
- 5) VERTICAL MOLDING, +2.5" WIDE, APPLIED ON IMP V, COLOR: CHARCOAL (TO MATCH ZINC GRAY IMP PANEL)
- 6) 6" PREFINISHED METAL FLASHING, COLOR: CHARCOAL (TO MATCH ZINC GRAY IMP PANEL)
- 7) EXPOSED FOUNDATION WALL
- 8) PREFINISHED GARAGE DOOR, COLOR: GREY (TO MATCH 1a)
- 9) DOOR, COLOR TO MATCH ADJOINING WALL, TYPICAL
- 10) GALVANISED STAIR AND HANDRAIL
- 11) GALVANIZED BOLLARDS 8"Ø FILLED WITH CONCRETE
- 12) SIGN APPLIED ON THE INSULATED METAL PANEL WALL. PROVIDE ELECTRICAL CONNECTION AND STRUCTURAL SUPPORTS BEHIND THE WALL

No	Date	Issued For	Revision	By
1	2022-12-16	ISSUED FOR SPA		

ROSEFELLOW KANATA
405 HUNTMAR DR.
CITY OF OTTAWA ONTARIO



Copyright GKC Architects - Not to be used for any other project without the architects' written consent. All dimensions and conditions must be verified on site. Do not scale drawings. Any discrepancies or omissions in the drawing shall be reported to the architect immediately in writing. All work to conform to most recent applicable norms, bylaws and codes for all given trades.

ARCHITECTURE
BUILDING A
COLORED ELEVATIONS

DRAWN BY: OC CHECKED BY: EB
SCALE: As indicated
FOUO: 22081 P400 R1

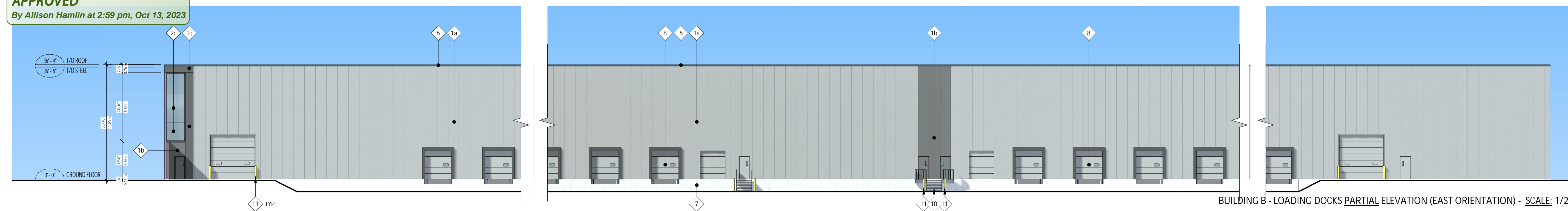
Attamlin

ALLISON HAMLIN
MANAGER (A), DEVELOPMENT REVIEW WEST
PLANNING, REAL ESTATE & ECONOMIC DEVELOPMENT
DEPARTMENT, CITY OF OTTAWA

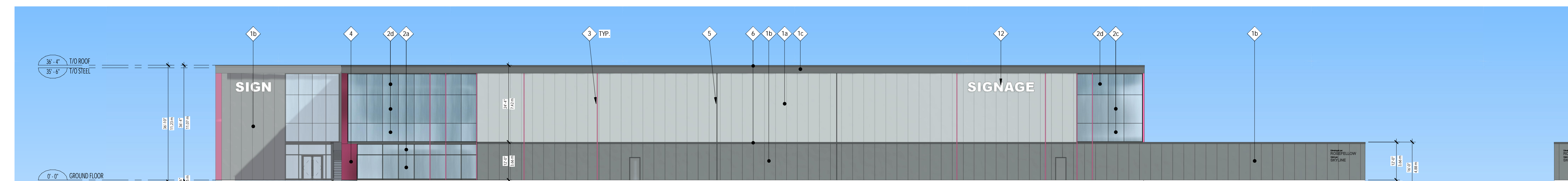
APPROVED
By Allison Hamlin at 2:59 pm, Oct 13, 2023



BUILDING B - LOADING DOCKS ELEVATION (EAST ORIENTATION) - SCALE: 1/500



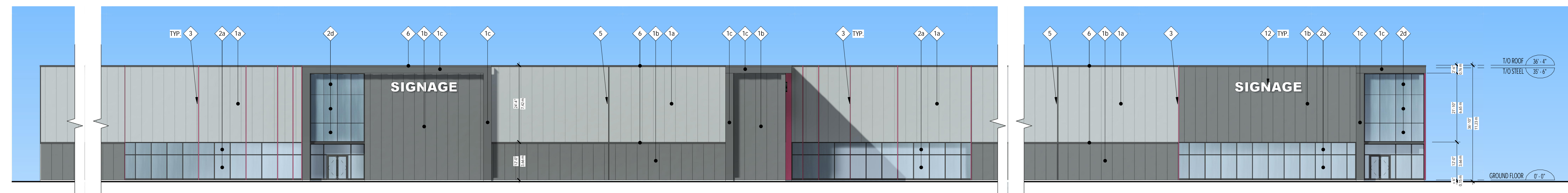
BUILDING B - LOADING DOCKS PARTIAL ELEVATION (EAST ORIENTATION) - SCALE: 1/200



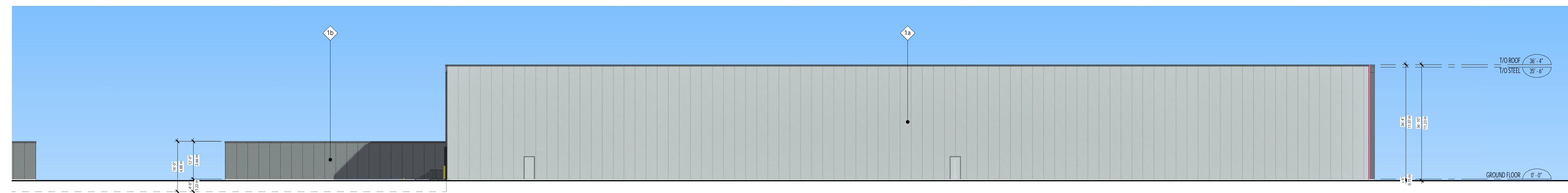
BUILDING B - CAMPEAU DRIVE ELEVATION (SOUTH ORIENTATION) - SCALE: 1/200



BUILDING B - JOURNEYMAN STREET ELEVATION (WEST ORIENTATION) - SCALE: 1/500



BUILDING B - JOURNEYMAN STREET PARTIAL ELEVATION (WEST ORIENTATION) - SCALE: 1/200



BUILDING B - REAR ELEVATION (NORTH ORIENTATION) - SCALE: 1/200

ELEVATIONS LEGEND (EXTERIOR FINISHES):

- 1a VERTICAL INSULATED METAL PANEL (IMP V.), 42" WIDE, 3" THICK, MICRO-RIB FINISH, COLOR: DOVE GRAY (REF. KINGSPAN)
- 1b VERTICAL INSULATED METAL PANEL (IMP V.), 42" WIDE, 3" THICK, MICRO-RIB FINISH, COLOR: ZINC GRAY (REF. KINGSPAN)
- 1c INSULATED METAL PANEL, 30" WIDE, 3" THICK, SMOOTH FINISH, COLOR: ZINC GRAY (REF. KINGSPAN)

ALL GLASS SURFACES, WILL HAVE BIRD FRIENDLY, HIGH CONTRAST PATTERN PRINTED ON GLASS SURFACE #1 (CERAMIC FRIT). THE PATTERN WILL BE CONSISTING OF 4MM DIAMETER CIRCLES, WHICH ARE 50MM APART FROM EACH OTHER

- 2a CLEAR THERMO GLASS, INT: CLEAR ANODISED ALUMINIUM CURTAIN WALL, EXT: VERTICAL AND HORIZONTAL STANDARD CAP (3/4" DEPTH), COLOR CHARCOAL
- 2b SPANDREL THERMO GLASS, INT: CLEAR ANODISED ALUMINIUM CURTAIN WALL, EXT: VERTICAL AND HORIZONTAL STANDARD CAP (3/4" DEPTH), COLOR CHARCOAL
- 2c CLEAR THERMO GLASS, INT: CLEAR ANODISED ALUMINIUM CURTAIN WALL, EXT: BLACK SILICON SEALS IN ALL DIRECTIONS, REFLECTION GREATER THAN 2a
- 2d SPANDREL THERMO GLASS, INT: CLEAR ANODISED ALUMINIUM CURTAIN WALL, EXT: BLACK SILICON SEALS IN ALL DIRECTIONS, REFLECTION GREATER THAN 2b
- 3 ALUMINIUM VERTICAL MOLDING - MULLION CAP 2 1/2" WIDE AND 6" DEEP, COLOR PINK (PANTONE #1915 C)
- 4 1/8" THICK ALUMINIUM PANEL, CONCEALED BRACKETS, COLOR PINK (PANTONE #1915 C)
- 5 VERTICAL MOLDING, +2.5" WIDE, APPLIED ON IMP V., COLOR CHARCOAL (TO MATCH ZINC GRAY IMP PANEL)
- 6 6" PREFINISHED METAL FLASHING, COLOR CHARCOAL (TO MATCH ZINC GRAY IMP PANEL)
- 7 EXPOSED FOUNDATION WALL
- 8 PREFINISHED GARAGE DOOR, COLOR GREY (TO MATCH 1a)
- 9 DOOR, COLOR TO MATCH ADJOINING WALL, TYPICAL
- 10 GALVANISED STAIR AND HANDRAIL
- 11 GALVANIZED BOLLARDS 8"Ø FILLED WITH CONCRETE
- 12 SIGN APPLIED ON THE INSULATED METAL PANEL WALL, PROVIDE ELECTRICAL CONNECTION AND STRUCTURAL SUPPORTS BEHIND THE WALL

No	Date	Revision	By
1	2022-12-16	ISSUED FOR SPA	

ROSEFELLOW KANATA
405 HUNTMAR DR.
CITY OF OTTAWA ONTARIO



Copyright GKC Architects - Not to be used for any other project without the architect's written consent. All dimensions and conditions must be verified on site. Do not scale drawings. Any discrepancies or omissions in the drawing shall be reported to the architect immediately in writing. All work to conform to most recent applicable norms, bylaws and codes for all given trades.

ARCHITECTURE
BUILDING B
COLORED ELEVATIONS

DRAWN BY: OC CHECKED BY: EB
SCALE: As indicated
FOUO: 22081 P401 R1